

ACF503					
INPUT VOLTAGE	FREQUENCY	CURRENT	NOISE	AIR FLOW	OPERATING VOLTAGE RANGE
120 VAC	50Hz	0.70A	51 dBA	370 CFM	102-138 VAC
	60Hz	0.85A	51 dBA	440 CFM	102-138 VAC

NOTES:

1. INSTALLATION SHALL COMPLY WITH ALL APPLICABLE NATIONAL AND LOCAL CODES.
2. SEE PRODUCT DOCUMENTATION FOR FURTHER INFORMATION.
3. UNLESS OTHERWISE SPECIFIED, ALL DIMENSIONS ARE IN MILLIMETERS [INCHES].
4. WEIGHT OF UNIT (TOTAL) IS 10.23 kg [22.5 LBS].
5. IEC320-C13 TO NEMA 5-15P POWER CORD OF 3 METER [10 FEET] LENGTH IS SUPPLIED WITH THE UNIT.
6. ROOF GROMMETS (0M-6444A - QTY.: 5) ARE SUPPLIED WITH THE SKU.

THIS DRAWING AND SPECIFICATIONS HEREIN ARE THE PROPERTY OF SCHNEIDER ELECTRIC AND SHALL NOT BE COPIED, REPRODUCED OR USED IN WHOLE OR IN PART, AS THE BASIS FOR THE MANUFACTURE OR SALE OF ITEMS WITHOUT WRITTEN PERMISSION FROM SCHNEIDER ELECTRIC. THIS DRAWING IS BASED UPON LATEST AVAILABLE INFORMATION AND IS SUBJECT TO CHANGE WITHOUT NOTICE.

Schneider Electric

TITLE:
RACK FAN TRAY
120V, 50/60Hz, FOR NETSHELTER SX
ASSEMBLY - MAIN MECHANICAL

PROJECT: STD SUBMITTAL DRAWINGS SHEET 1 OF 3

DWG NO: **ACF503**

DRAWN BY: JAYAPRAKASH 07-MAY-08

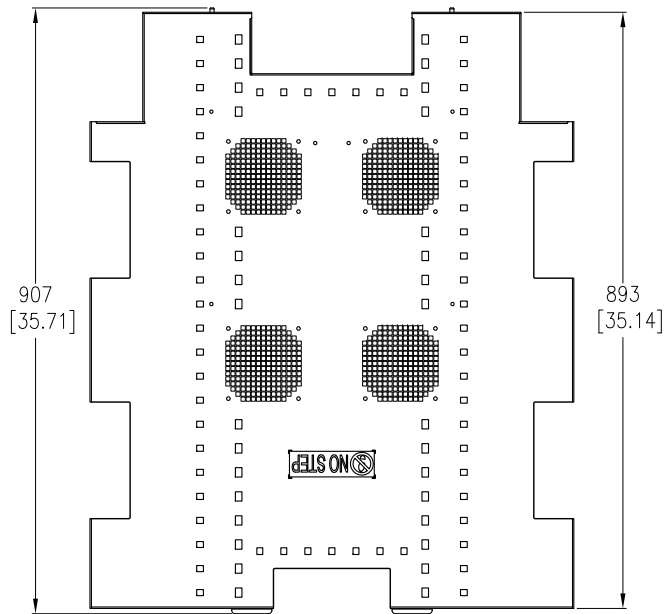
ENGINEER: M UHRHAN/B OLIVER 08-MAY-08

APPROVED BY: C DUMINSKY/C ZALDIR/HIVIA 08-MAY-08

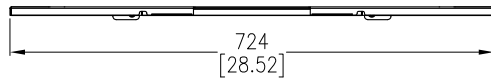
REV 0

THIRD
ANGLE
PROJ

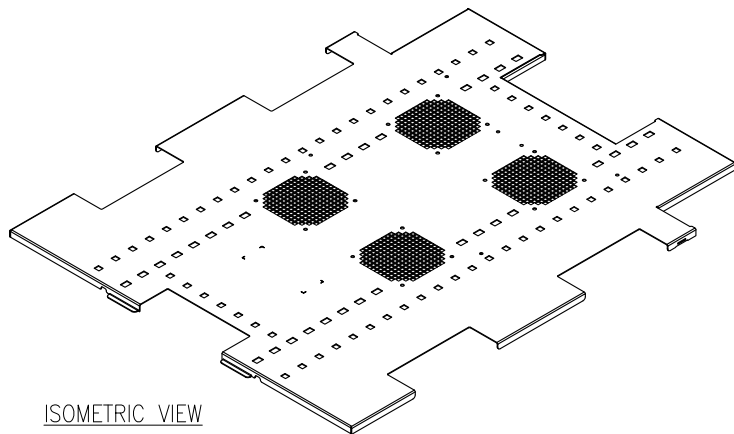
ROOF FAN TRAY



TOP VIEW



FRONT VIEW



ISOMETRIC VIEW

NOTES:

1. INSTALLATION SHALL COMPLY WITH ALL APPLICABLE NATIONAL AND LOCAL CODES.
2. SEE PRODUCT DOCUMENTATION FOR FURTHER INFORMATION.
3. UNLESS OTHERWISE SPECIFIED, ALL DIMENSIONS ARE IN MILLIMETERS [INCHES].

THIS DRAWING AND SPECIFICATIONS HEREIN ARE THE PROPERTY OF SCHNEIDER ELECTRIC AND SHALL NOT BE COPIED, REPRODUCED OR USED IN WHOLE OR IN PART, AS THE BASIS FOR THE MANUFACTURE OR SALE OF ITEMS WITHOUT WRITTEN PERMISSION FROM SCHNEIDER ELECTRIC. THIS DRAWING IS BASED UPON LATEST AVAILABLE INFORMATION AND IS SUBJECT TO CHANGE WITHOUT NOTICE.



TITLE:

RACK FAN TRAY
120V, 50/60Hz, FOR NETSHELTER SX
ROOF FAN TRAY & FAN COVER ASSEMBLY

PROJECT: STD SUBMITTAL DRAWINGS SHEET 2 OF 3

DWG NO:

ACF503

REV 0

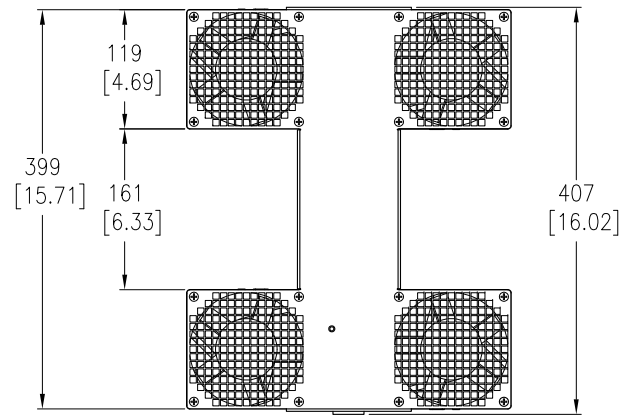
DRAWN BY: JAYAPRAKASH 07-MAY-08

ENGINEER: M UHRHAN/B OLIVER 08-MAY-08

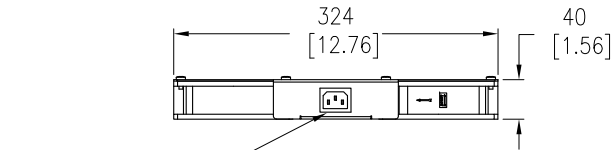
APPROVED BY: C CUMINS/EYC ZALDIR/HIM 08-MAY-08

THIRD ANGLE PROJ

FAN COVER ASSEMBLY

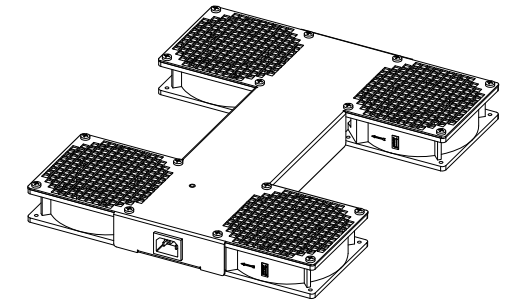


TOP VIEW



IEC320-C14
INPUT SOCKET

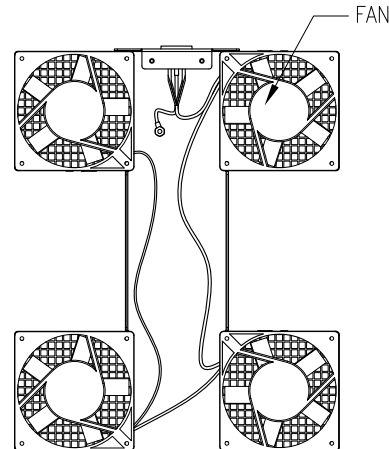
FRONT VIEW



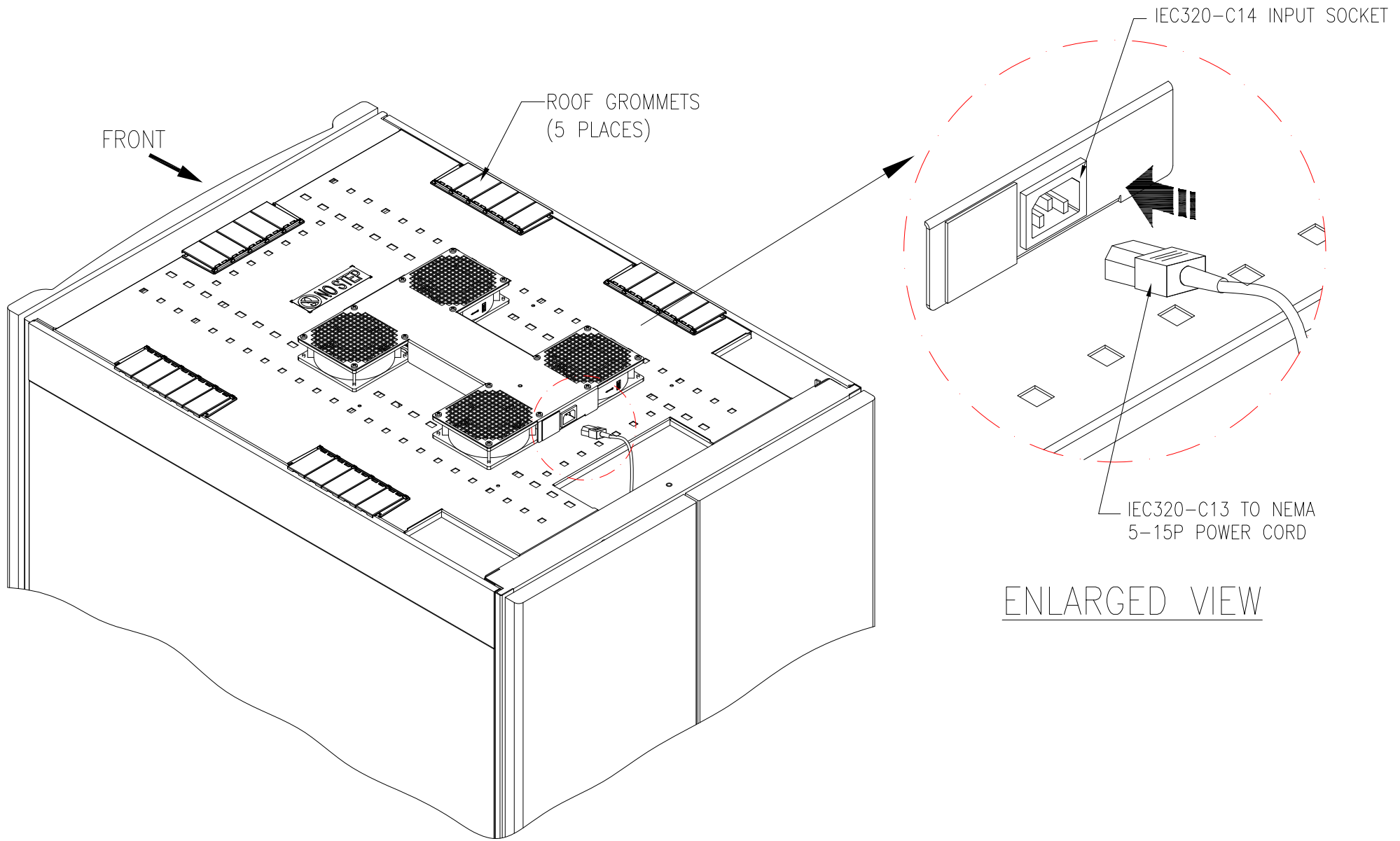
TRIMETRIC VIEW



SIDE VIEW



BOTTOM VIEW



NOTES:

1. INSTALLATION SHALL COMPLY WITH ALL APPLICABLE NATIONAL AND LOCAL CODES.
2. SEE PRODUCT DOCUMENTATION FOR FURTHER INFORMATION.

THIS DRAWING AND SPECIFICATIONS HEREIN ARE THE PROPERTY OF SCHNEIDER ELECTRIC AND SHALL NOT BE COPIED, REPRODUCED OR USED IN WHOLE OR IN PART, AS THE BASIS FOR THE MANUFACTURE OR SALE OF ITEMS WITHOUT WRITTEN PERMISSION FROM SCHNEIDER ELECTRIC. THIS DRAWING IS BASED UPON LATEST AVAILABLE INFORMATION AND IS SUBJECT TO CHANGE WITHOUT NOTICE.



TITLE:

RACK FAN TRAY
120V, 50/60Hz, FOR NETSHELTER SX
TYPICAL APPLICATION

PROJECT: STD SUBMITTAL DRAWINGS SHEET 3 OF 3

DWG NO:

ACF503

DRAWN BY: JAYAPRAKASH 07-MAY-08

ENGINEER: M UHRHAN/B OLIVER 08-MAY-08

APPROVED BY: C CUMINSKEY/C ZALDARHIVIA 08-MAY-08

REV 0

THIRD
ANGLE
PROJ