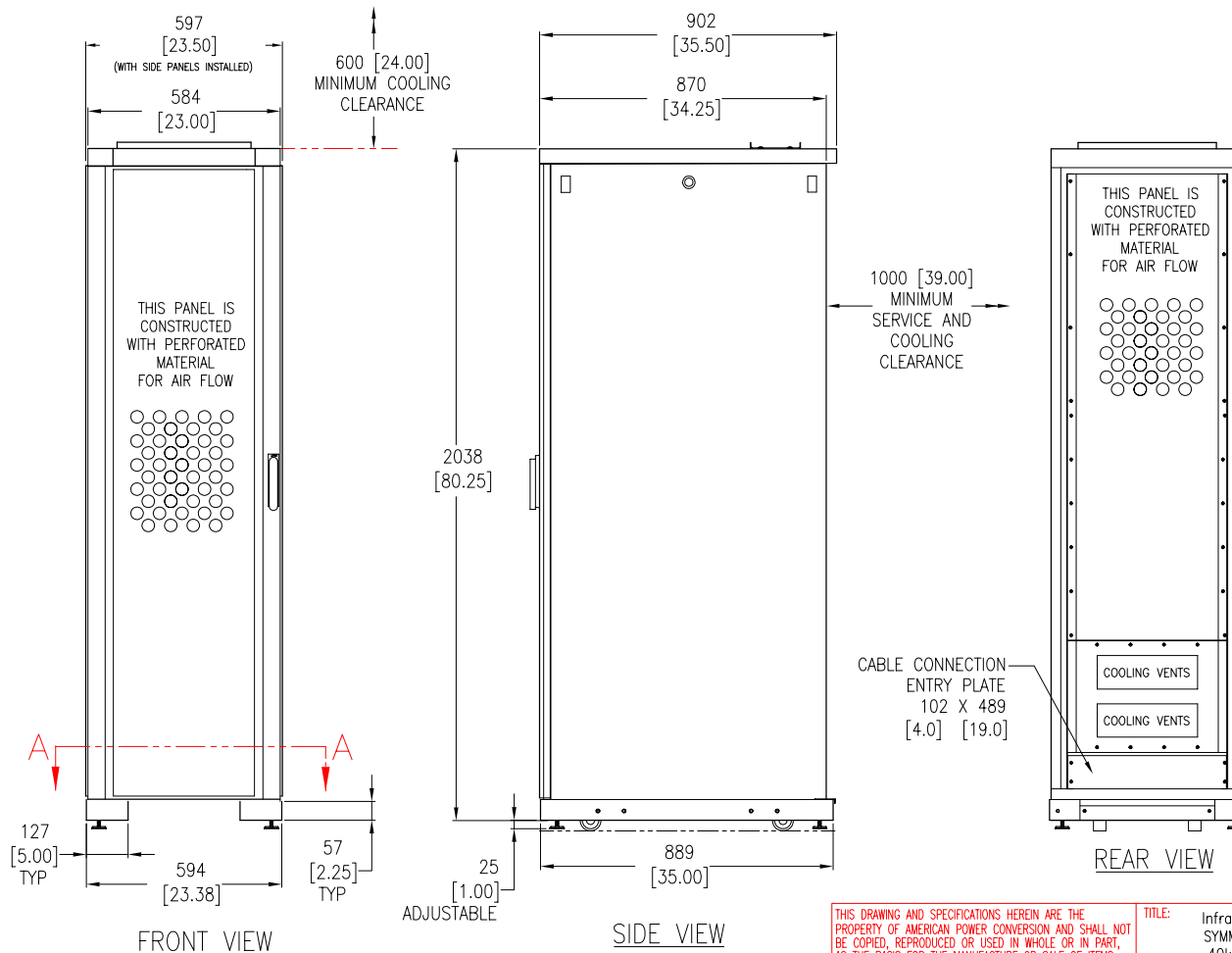


NOTES:

1. ALL DIMENSIONS ARE IN MILLIMETERS [INCHES].
2. CABLE ENTRY IS BOTTOM, SIDE OR REAR OF UNIT.
3. NET WEIGHT OF UNIT IS 986 KG [2166 LBS].
4. MAXIMUM 4 XR CABINETS CAN BE ATTACHED TO A SINGLE SYMMETRA 3-PHASE UNIT.
5. INSTALLATION MUST COMPLY WITH ALL APPLICABLE NATIONAL AND LOCAL CODES.



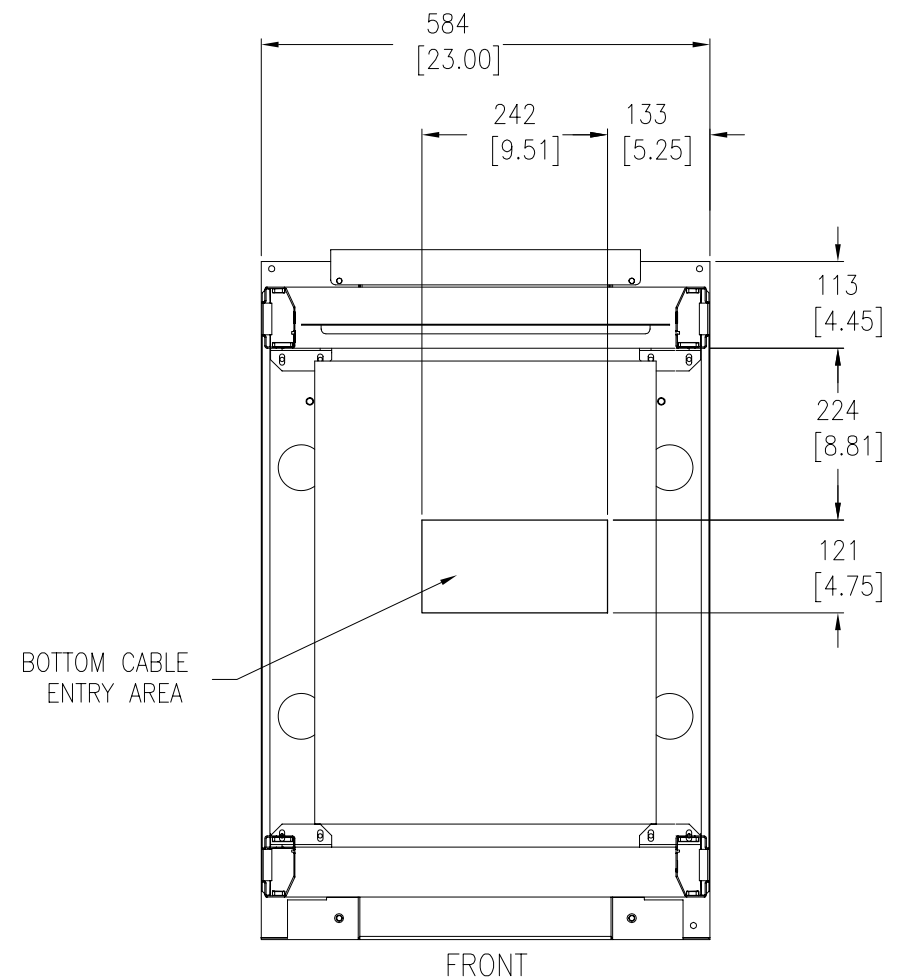
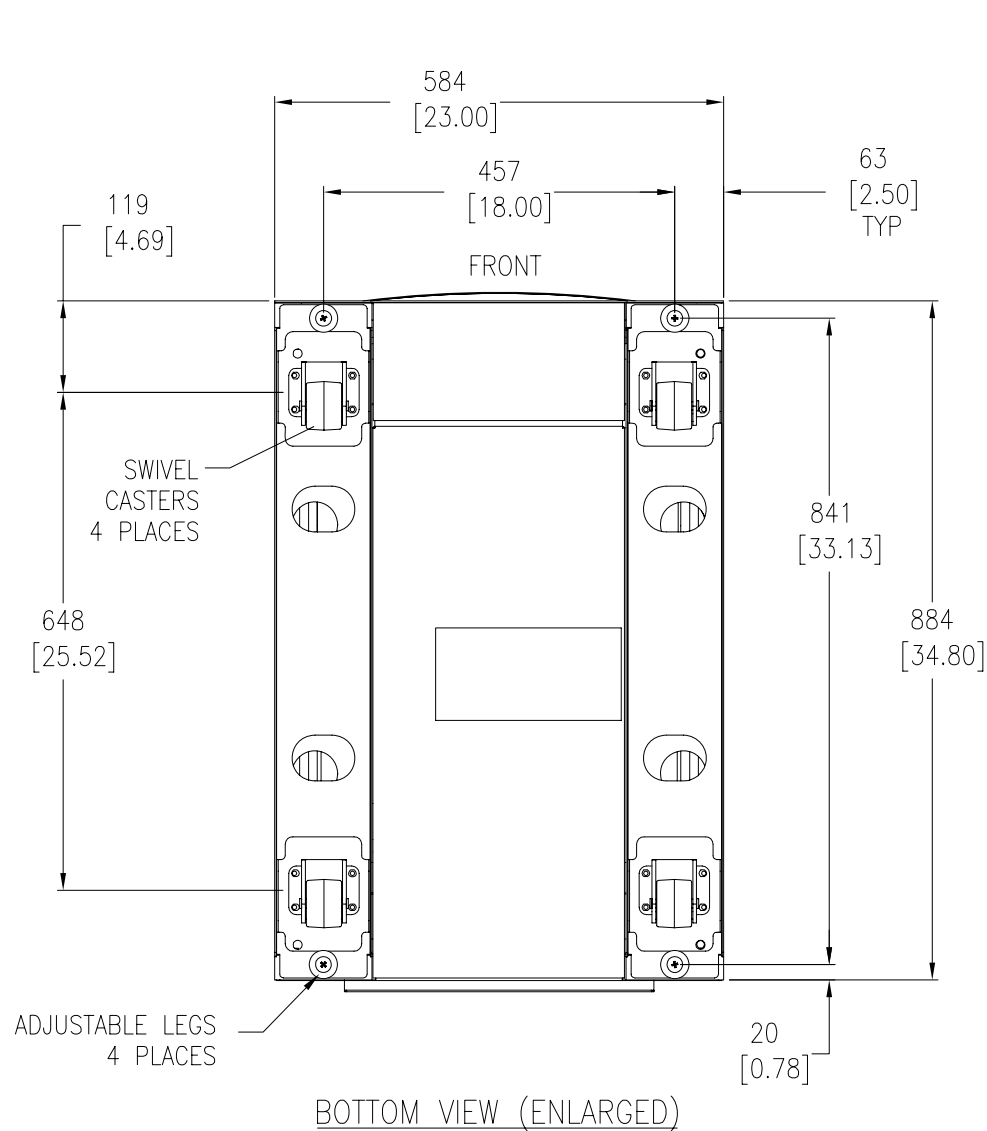
THIS DRAWING AND SPECIFICATIONS HEREIN ARE THE PROPERTY OF AMERICAN POWER CONVERSION AND SHALL NOT BE COPIED, REPRODUCED OR USED IN WHOLE OR IN PART, AS THE BASIS FOR THE MANUFACTURE OR SALE OF ITEMS, WITHOUT WRITTEN PERMISSION FROM APC. THIS DRAWING IS BASED UPON LATEST AVAILABLE INFORMATION AND IS SUBJECT TO CHANGE WITHOUT NOTICE.

TITLE: InfraStruXure 40kW
SYMMETRA PX40 XR
40kW, 400V, 3PH
MAIN MECHANICAL

PROJECT: SUBMITTAL DRAWING SHEET 1 OF 4

DWG NO: SYPX-40K40XRH10-MM1	REV. 3
DRAWN BY: JAYAPRAKASH	02/05/07
CHECKED BY: A BOULERBAH	02/05/07
ENGINEER: E SILVA	02/05/07

APC[®]
AMERICAN POWER CONVERSION
132 FAIRGROUNDS RD
WEST KINGSTON, RI 02892



SECTION A-A (ENLARGED)
(VIEW FROM INSIDE CABINET, LOOKING DOWN)

NOTES:

1. ALL DIMENSIONS ARE IN MILLIMETERS [INCHES].
2. SOME STRUCTURAL DETAILS HAVE BEEN OMITTED FOR CLARITY.
3. INSTALLATION MUST COMPLY WITH ALL APPLICABLE NATIONAL AND LOCAL CODES.

THIS DRAWING AND SPECIFICATIONS HEREIN ARE THE PROPERTY OF AMERICAN POWER CONVERSION AND SHALL NOT BE COPIED, REPRODUCED OR USED IN WHOLE OR IN PART, AS THE BASIS FOR THE MANUFACTURE OR SALE OF ITEMS, WITHOUT WRITTEN PERMISSION FROM APC. THIS DRAWING IS BASED UPON LATEST AVAILABLE INFORMATION AND IS SUBJECT TO CHANGE WITHOUT NOTICE.

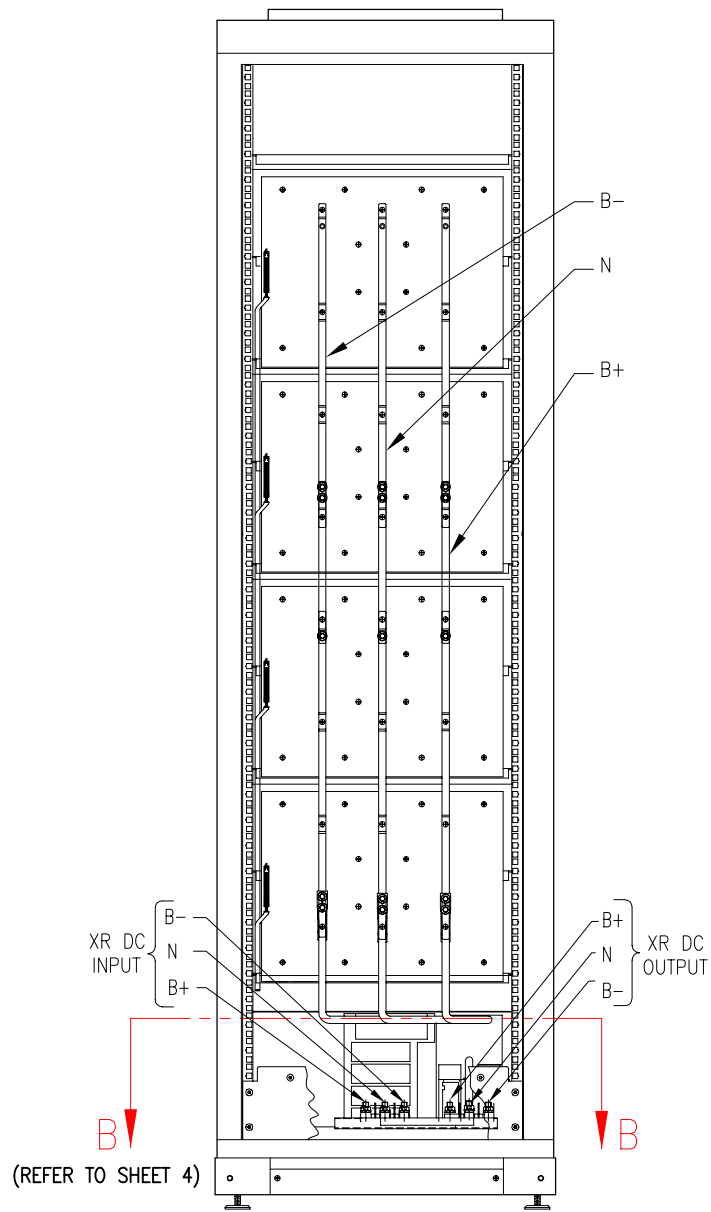
TITLE: InfraStruXure 40kW
SYMMETRA PX40 XR
40kW, 400V, 3PH
BOTTOM VIEW

PROJECT: SUBMITTAL DRAWING SHEET 2 OF 4

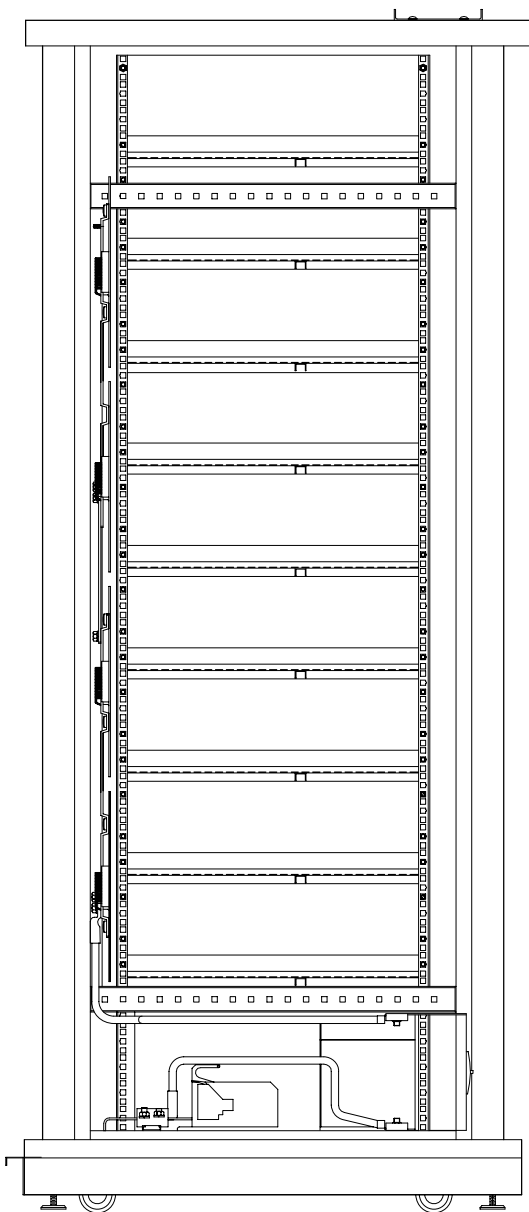
DWG NO: SYPX-40K40XRH10-MM2 REV. 3

DRAWN BY: JAYAPRAKASH	02/05/07
CHECKED BY: A BOULERBAH	02/05/07
ENGINEER: E SILVA	02/05/07

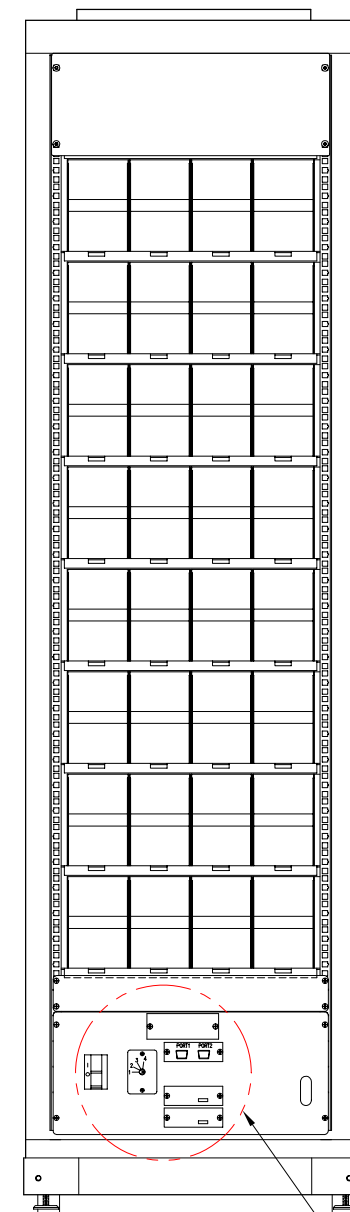
APC[®]
AMERICAN POWER CONVERSION
132 FAIRGROUNDS RD
WEST KINGSTON, RI 02892



REAR VIEW
(DOOR REMOVED)



SIDE VIEW
(PANEL REMOVED)



FRONT VIEW
(DOOR REMOVED)

SEE VIEW C
(REFER TO SHEET 4)

NOTES:

1. ALL DIMENSIONS ARE IN MILLIMETERS [INCHES].
2. CABINET IS SHOWN WITHOUT DOORS AND PANELS. SOME STRUCTURAL DETAILS AND MOUNTING BRACKETS HAVE BEEN OMITTED FOR CLARITY.
3. WIRING CONFIGURATION SHOWN IS FOR REFERENCE ONLY.
4. INSTALLATION MUST COMPLY WITH ALL APPLICABLE NATIONAL AND LOCAL CODES.

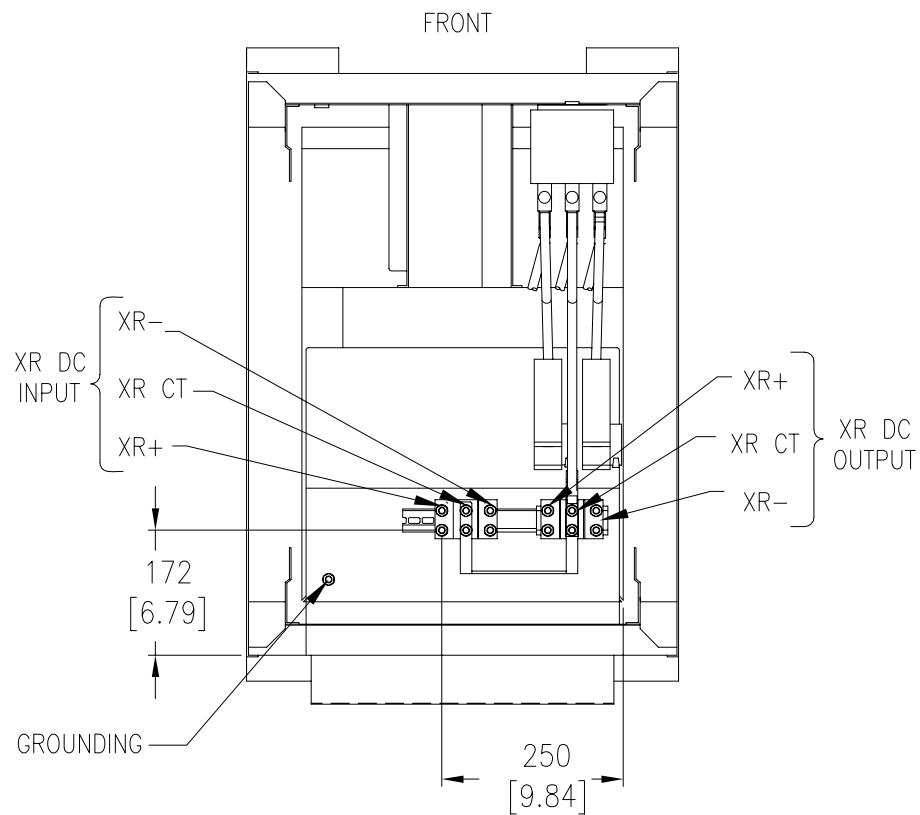
THIS DRAWING AND SPECIFICATIONS HEREIN ARE THE PROPERTY OF AMERICAN POWER CONVERSION AND SHALL NOT BE COPIED, REPRODUCED OR USED IN WHOLE OR IN PART, AS THE BASIS FOR THE MANUFACTURE OR SALE OF ITEMS, WITHOUT WRITTEN PERMISSION FROM APC. THIS DRAWING IS BASED UPON LATEST AVAILABLE INFORMATION AND IS SUBJECT TO CHANGE WITHOUT NOTICE.

TITLE: InfraStruXure 40kW
SYMMETRA PX40 XR
40kW, 400V, 3PH
INTERNAL VIEWS

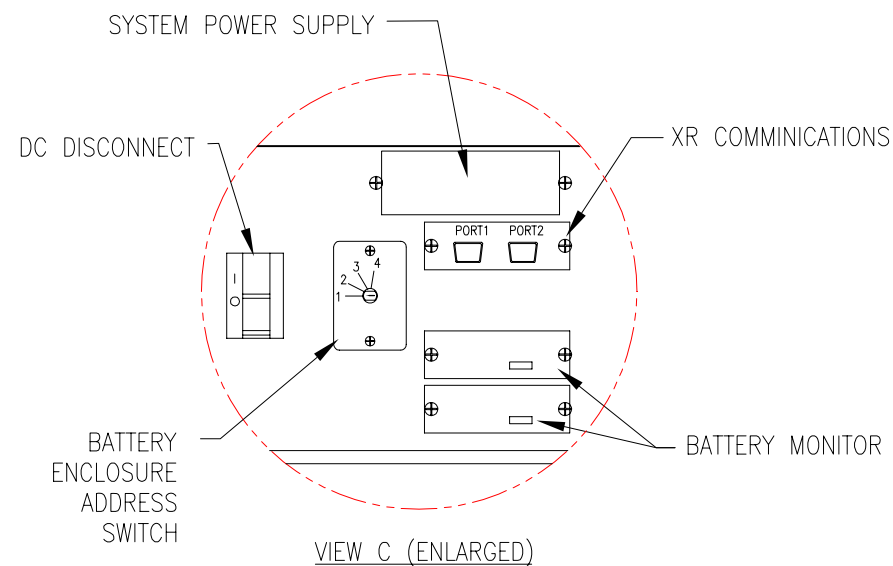
PROJECT: SUBMITTAL DRAWING SHEET 3 OF 4

DWG NO:	SYPX-40K40XRH10-MM3	REV.	3
DRAWN BY:	JAYAPRAKASH		02/05/07
CHECKED BY:	A BOULERBAH		02/05/07
ENGINEER:	E SILVA		02/05/07

APC
AMERICAN POWER CONVERSION
132 FAIRGROUNDS RD
WEST KINGSTON, RI 02892



SECTION B-B (ENLARGED)
VIEW FROM INSIDE CABINET, LOOKING DOWN



NOTES:

1. PLEASE REFER TO PRODUCT MANUAL.
2. ALL DIMENSIONS ARE IN MILLIMETERS [INCHES].
3. INSTALLATION MUST COMPLY WITH ALL APPLICABLE NATIONAL AND LOCAL CODES.

THIS DRAWING AND SPECIFICATIONS HEREIN ARE THE PROPERTY OF AMERICAN POWER CONVERSION AND SHALL NOT BE COPIED, REPRODUCED OR USED IN WHOLE OR IN PART, AS THE BASIS FOR THE MANUFACTURE OR SALE OF ITEMS, WITHOUT WRITTEN PERMISSION FROM APC. THIS DRAWING IS BASED UPON LATEST AVAILABLE INFORMATION AND IS SUBJECT TO CHANGE WITHOUT NOTICE.

TITLE: InfraStruXure 40kW
SYMMETRA PX40 XR
40kW, 400V, 3PH
SECTION VIEW

PROJECT: SUBMITTAL DRAWING SHEET 4 OF 4

DWG NO: SYPX-40K40XRH10-MM4 REV. 3

DRAWN BY: JAYAPRAKASH	02/05/07
CHECKED BY: A BOULERBAH	02/05/07
ENGINEER: E SILVA	02/05/07

APC
AMERICAN POWER CONVERSION
132 FAIRGROUNDS RD
WEST KINGSTON, RI 02892