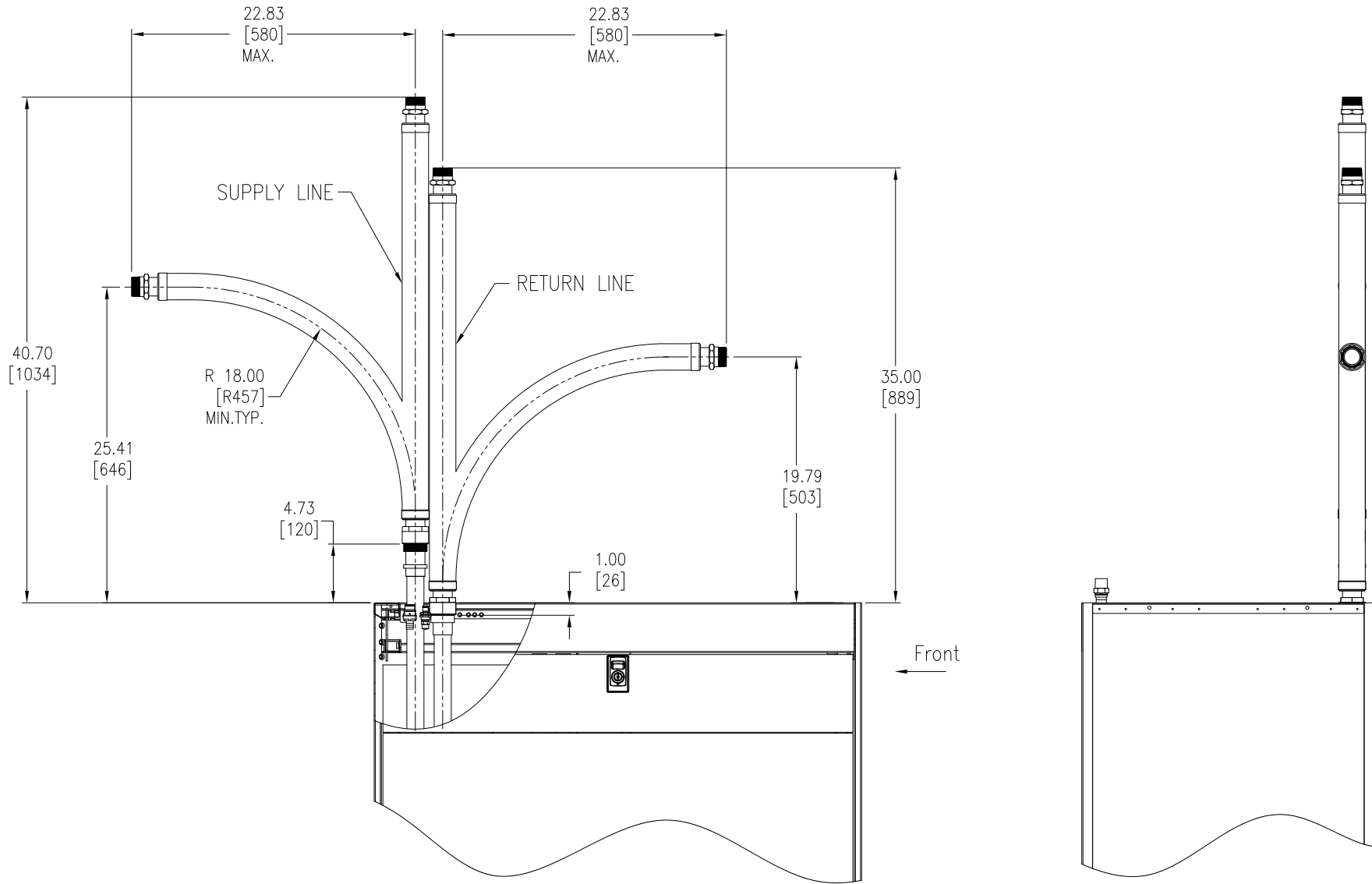


36" [914mm] FLEX HOSE INTERFACE DIMENSIONS – TOP PIPING CONFIGURATION



NOTES:

1. INSTALLATION SHALL COMPLY WITH ALL APPLICABLE NATIONAL, STATE AND LOCAL CODES.
2. SEE PRODUCT DOCUMENTATION FOR FURTHER INFORMATION
3. UNLESS OTHERWISE SPECIFIED, ALL DIMENSIONS ARE IN INCHES[MILLIMETERS].
4. HOSES CAN BE SWIVELED 360° ABOUT THE COUPLING DIAMETER, BEFORE TIGHTENING.
5. ELBOWS CAN ALTERNATELY BE USED, RATHER THAN BENDING HOSE. SEE "DETAIL A"

SIDE VIEW

FRONT VIEW

THIS DRAWING AND SPECIFICATIONS HEREIN ARE THE PROPERTY OF SCHNEIDER ELECTRIC AND SHALL NOT BE COPIED, REPRODUCED OR USED IN WHOLE OR IN PART, AS THE BASIS FOR THE MANUFACTURE OR SALE OF ITEMS WITHOUT WRITTEN PERMISSION FROM SCHNEIDER ELECTRIC. THIS DRAWING IS BASED UPON LATEST AVAILABLE INFORMATION AND IS SUBJECT TO CHANGE WITHOUT NOTICE.

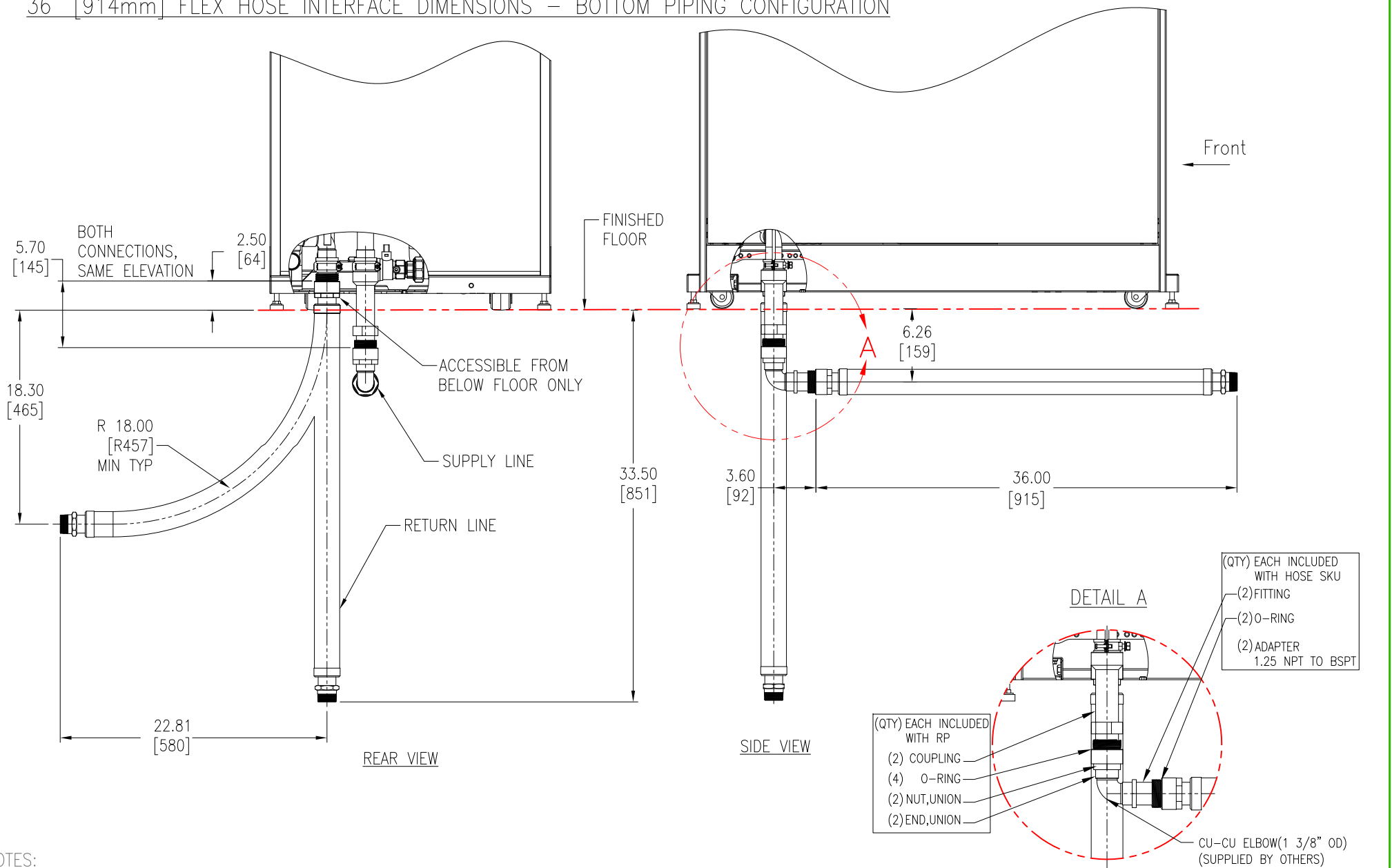


TITLE: InfraStruXure
INROW RP
PRECISION AIR CONDITIONING – CHILLED WATER
36IN[914mm] STAINLESS FLEX PIPE KIT
TOP PIPING – HOSE ASSEMBLY
PROJECT: STD SUBMITTAL DRAWINGS SHEET 1 OF 3

DWG NO: ACAC10016-MM1
DRAWN BY: V BUSH 27-SEP-10
ENGINEER: D LINGREY/G IVEY 27-SEP-10
APPROVED BY: C CUMMSKEY/C ZALDWAR 27-SEP-10

REV. 1
THIRD ANGLE PROJ

36" [914mm] FLEX HOSE INTERFACE DIMENSIONS – BOTTOM PIPING CONFIGURATION



- NOTES:**
1. INSTALLATION SHALL COMPLY WITH ALL APPLICABLE NATIONAL, STATE AND LOCAL CODES.
 2. SEE PRODUCT DOCUMENTATION FOR FURTHER INFORMATION
 3. UNLESS OTHERWISE SPECIFIED, ALL DIMENSIONS ARE IN INCHES[MILLIMETERS].
 4. HOSES CAN BE SWIVELED 360° ABOUT THE COUPLING DIAMETER, BEFORE TIGHTENING.
 5. ELBOWS CAN ALTERNATELY BE USED, RATHER THAN BENDING HOSE. SEE "DETAIL A"

THIS DRAWING AND SPECIFICATIONS HEREIN ARE THE PROPERTY OF SCHNEIDER ELECTRIC AND SHALL NOT BE COPIED, REPRODUCED OR USED IN WHOLE OR IN PART, AS THE BASIS FOR THE MANUFACTURE OR SALE OF ITEMS WITHOUT WRITTEN PERMISSION FROM SCHNEIDER ELECTRIC. THIS DRAWING IS BASED UPON LATEST AVAILABLE INFORMATION AND IS SUBJECT TO CHANGE WITHOUT NOTICE.

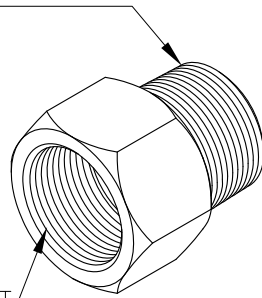


TITLE: InfraStruXure
INROW RP
PRECISION AIR CONDITIONING – CHILLED WATER
36(914mm) STAINLESS FLEX PIPE KIT
BOTTOM PIPING – HOSE ASSEMBLY
PROJECT: STD SUBMITTAL DRAWINGS SHEET 2 OF 3

DWG NO: ACAC10016-MM2
DRAWN BY: V BUSH 27-SEP-10
ENGINEER: D LINGREY/G IVEY 27-SEP-10
APPROVED BY: C CUMMSKEY/C ZALDVAR 27-SEP-10

REV. 1
THIRD ANGLE PROJ

1.25-11.00 BSPT, EXT

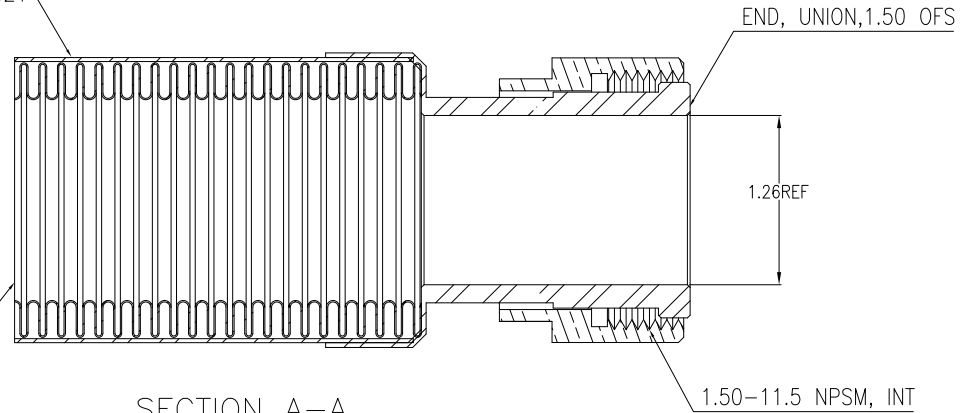


1.25-11.50 NPT, INT

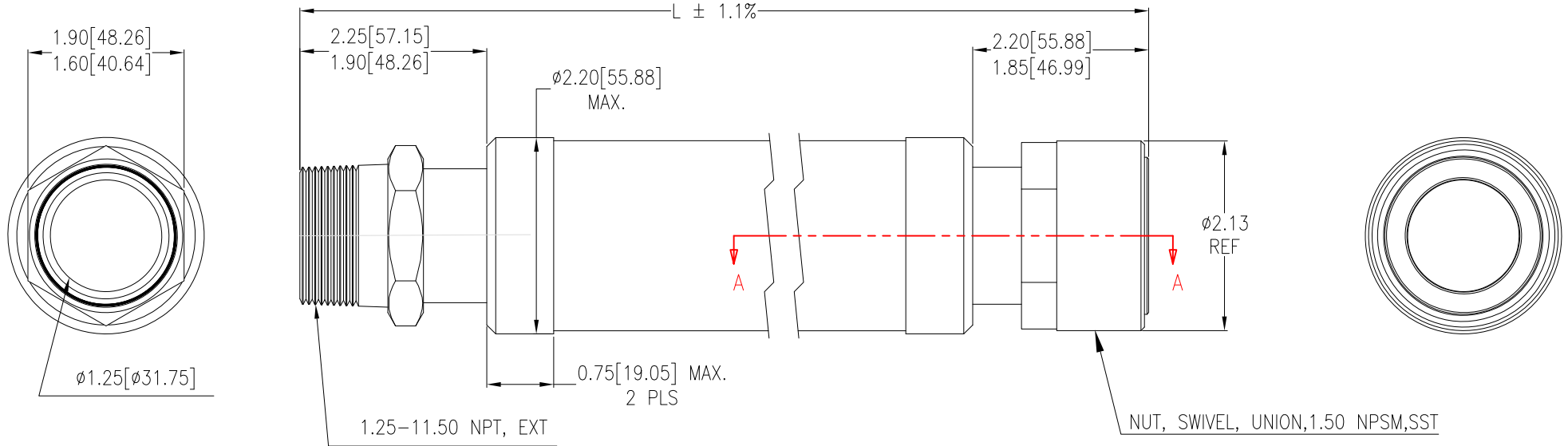
ADAPTER, ISOMETRIC VIEW

SST WIRE BRAID
AISI: 304, 316 OR 321

1.5 [38.1] ID NOM,
CORRUGATED SST TUBE,
AISI: 304, 304L, 316,
316L OR 321



SECTION A-A



NOTES:

- INSTALLATION SHALL COMPLY WITH ALL APPLICABLE NATIONAL, STATE AND LOCAL CODES.
- SEE PRODUCT DOCUMENTATION FOR FURTHER INFORMATION
- UNLESS OTHERWISE SPECIFIED, ALL DIMENSIONS ARE IN INCHES[MILLIMETERS].
- MAXIMUM OPERATING PRESSURE: 300 PSIG [2068 KPA].
- MINIMUM OPERATING CENTERLINE BENDING RADIUS 18" (457 MM).
- FITTINGS & ITEMS NOT OTHERWISE DEFINED ON THIS DRAWING SHALL BE 304, 304L, 316 OR 316L STAINLESS STEEL.
- FOR SKU DETAILS REFER TO TABLE. EACH SKU INCLUDES PAIR OF HOSES & FITTINGS (SHEET 2 OF 3).
- DO NOT LOAD IN AN AXIAL OR TORSIONAL MANNER.
- USE HANGERS TO SUPPORT WEIGHT OF HOSE AS REQUIRED.
- FLEX HOSES ARE OPTIONAL AND HAVE TO BE ORDERED BY CUSTOMER.

SKU NO	LENGTH [IN(mm)]	DISCRIPTION	WEIGHT [LBS (kg)]	Cv	dP@40gpm IN PSI (dP@9.0cu.m/h IN kPa)
ACAC10016	36(914)	3FT(0.914m) STAINLESS FLEX PIPE KIT 1.25"MPT TP 1.5" NPSM, OFS, FEMALE	3.8(1.73)	57	0.5(3.4)

THIS DRAWING AND SPECIFICATIONS HEREIN ARE THE PROPERTY OF SCHNEIDER ELECTRIC AND SHALL NOT BE COPIED, REPRODUCED OR USED IN WHOLE OR IN PART, AS THE BASIS FOR THE MANUFACTURE OR SALE OF ITEMS WITHOUT WRITTEN PERMISSION FROM SCHNEIDER ELECTRIC. THIS DRAWING IS BASED UPON LATEST AVAILABLE INFORMATION AND IS SUBJECT TO CHANGE WITHOUT NOTICE.



TITLE: InfraStruXure INROW RP PRECISION AIR CONDITIONING - CHILLED WATER 36IN[914mm] STAINLESS FLEX PIPE KIT HOSE ASSEMBLY
PROJECT: STD SUBMITTAL DRAWINGS SHEET 3 OF 3

DWG NO: ACAC10016-MM3
DRAWN BY: V BUSH 27-SEP-10
ENGINEER: D LINGREY/G IVEY 27-SEP-10
APPROVED BY: C CUMMSKEY/C ZALDVAR 27-SEP-10
REV. 1
THIRD ANGLE PROJ