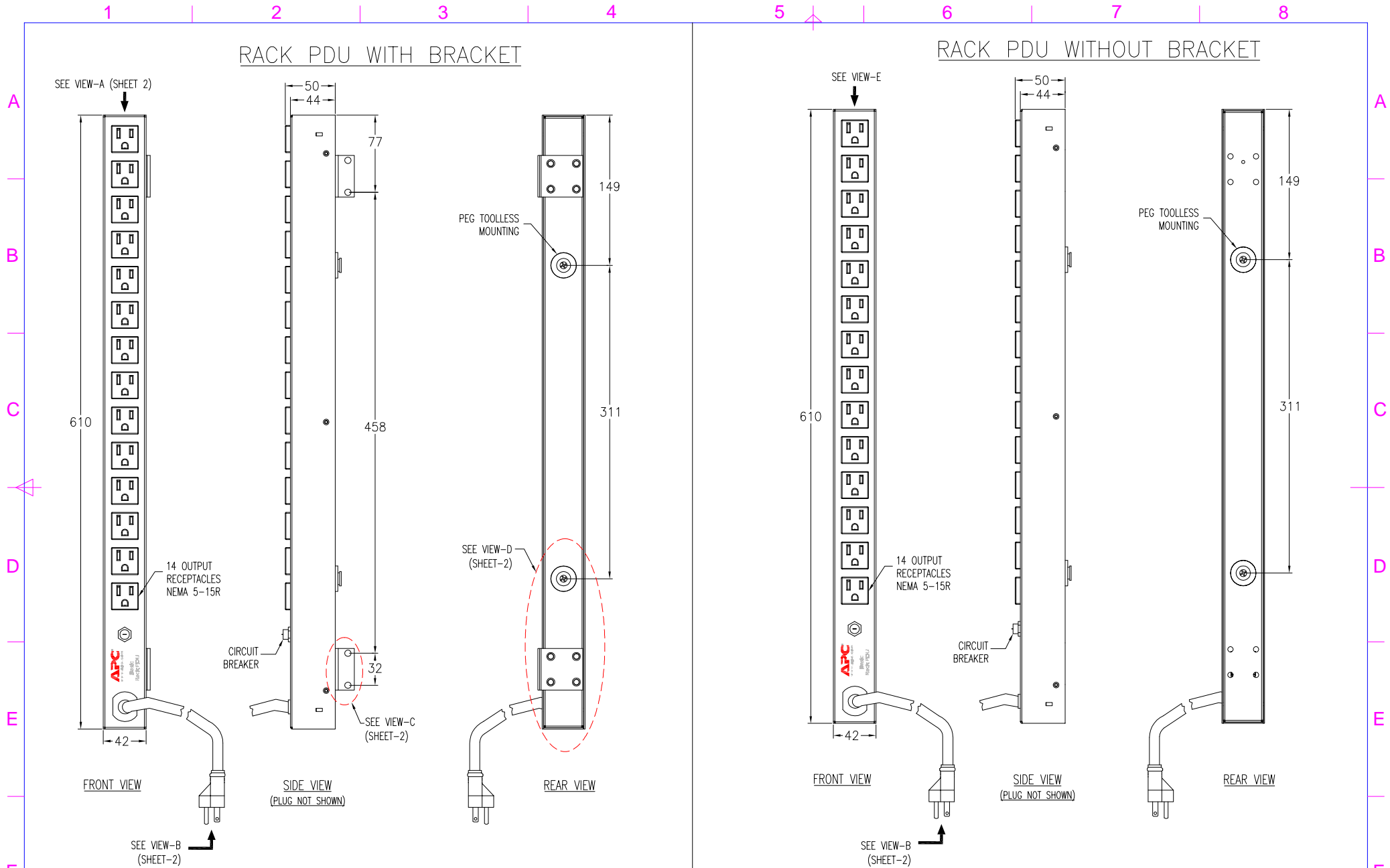


### RACK PDU WITH BRACKET

### RACK PDU WITHOUT BRACKET



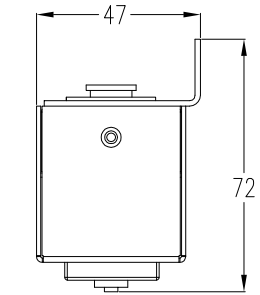
- NOTES:
1. ALL DIMENSIONS ARE IN MILLIMETERS.
  2. NET WEIGHT IS 2.18 kgs.
  3. LENGTH OF THE CORD IS 3658 mm.
  3. INSTALLATION MUST COMPLY WITH ALL APPLICABLE NATIONAL AND LOCAL CODES.

THIS DRAWING AND SPECIFICATIONS HEREIN ARE THE PROPERTY OF AMERICAN POWER CONVERSION AND SHALL NOT BE COPIED, REPRODUCED OR USED IN WHOLE OR IN PART, AS THE BASIS FOR THE MANUFACTURE OR SALE OF ITEMS WITHOUT WRITTEN PERMISSION FROM APC.  
THIS DRAWING IS BASED UPON LATEST AVAILABLE INFORMATION AND IS SUBJECT TO CHANGE WITHOUT NOTICE.

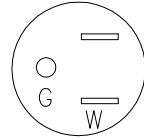


PROJECT		SUBMITTAL DRAWING		TITLE	
DRAWN		JAYAPRAKASH		RACK PDU, BASIC	
CHECKED		T.HORSTMANN		ZERO U, 15A, 100/120V, INPUT: NEMA 5-15P	
ENGINEER		J.SUN		OUTPUT: (14)NEMA 5-15R	
SCALE		14/03/06		MECHANICAL DETAILS	
3M-ANGLE PROJECTION		16/03/06		DWG NO	
16/03/06		AP9567		Sheet No.	
		1 / 2		REV.	
				-	

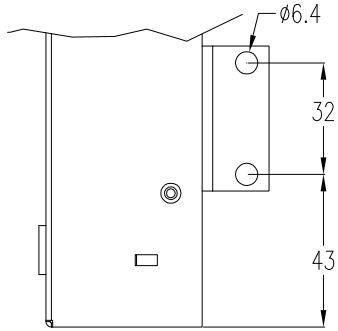
DETAILS (ENLARGED VIEWS)



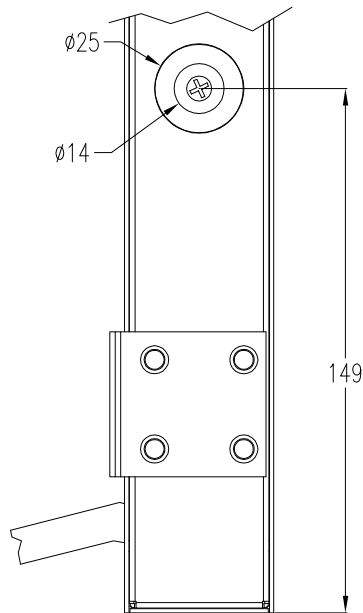
DETAIL-A (ENLARGED)



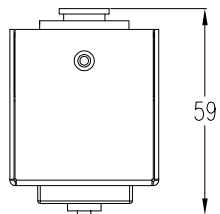
DETAIL-B  
(NEMA 5-15P ENLARGED)



DETAIL-C  
(MOUNTING BRACKET ENLARGED)

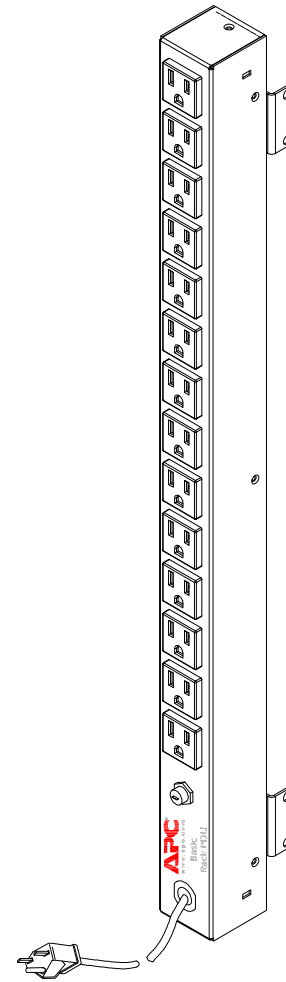


DETAIL-D  
(NEMA 5-15P ENLARGED)

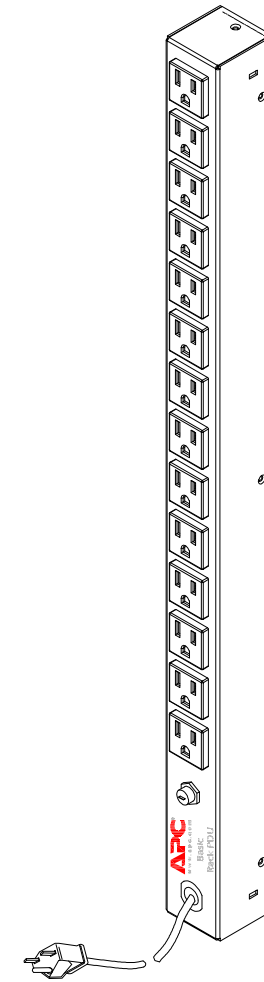


DETAIL-E (ENLARGED)

ISOMETRIC VIEW



RACK PDU WITH BRACKET



RACK PDU WITHOUT BRACKET

- NOTES:
1. ALL DIMENSIONS ARE IN MILLIMETERS.
  2. INSTALLATION MUST COMPLY WITH ALL APPLICABLE NATIONAL AND LOCAL CODES.

THIS DRAWING AND SPECIFICATIONS HEREIN ARE THE PROPERTY OF AMERICAN POWER CONVERSION AND SHALL NOT BE COPIED, REPRODUCED OR USED IN WHOLE OR IN PART, AS THE BASIS FOR THE MANUFACTURE OR SALE OF ITEMS WITHOUT WRITTEN PERMISSION FROM APC.  
THIS DRAWING IS BASED UPON LATEST AVAILABLE INFORMATION AND IS SUBJECT TO CHANGE WITHOUT NOTICE.



PROJECT		SUBMITTAL DRAWING		TITLE	
				RACK PDU, BASIC	
				ZERO U, 15A, 100/120V, INPUT: NEMA 5-15P	
				OUTPUT: (14)NEMA 5-15P	
				DETAILS AND ISOMETRIC VIEW	
DRAWN	JAYAPRAKASH	14/03/06	SCALE	DWG NO	AP9567
CHECKED	T.HORSTMANN	16/03/06	3rd-ANGLE PROJECTION	Sheet No.	2 / 2
ENGINEER	J.SUN	16/03/06		REV.	-