

APC USB Wi-Fi Device Quick Start Guide

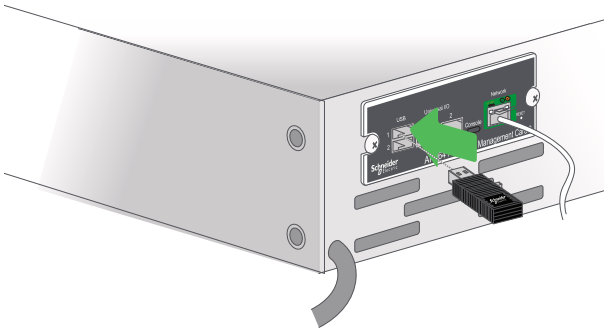
AP9834

1



NOTE: A supported Network Management Card 3 (AP9641/AP9643) with valid TCP/IP settings running firmware version 1.4 or higher is required to use and configure the APC USB Wi-Fi Device.

2



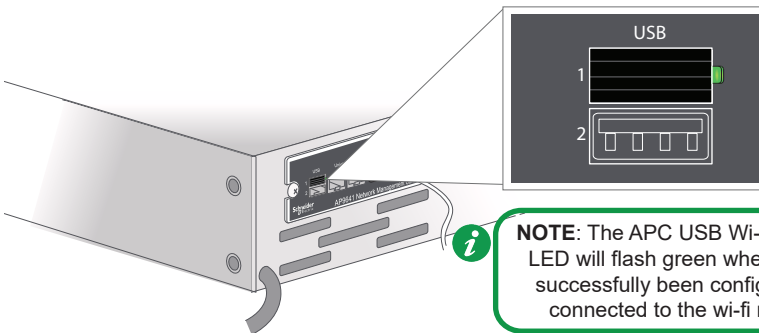
Insert the APC USB Wi-Fi Device into an available USB port.

3



Enable and configure wi-fi via the NMC Web UI (**Configuration > Network > Wi-Fi** navigation path), or Command Line Interface (`wifi` command). For more information, consult the NMC 3 User Guide and CLI Guide on the APC website - apc.com/upsnmc

4



NOTE: The APC USB Wi-Fi Device's LED will flash green when wi-fi has successfully been configured and connected to the wi-fi network.

5



For more information and troubleshooting, refer to the NMC 3 User Guide on the APC website - apc.com/us/en/download/document/SPD_CCON-AYCEFJ_EN