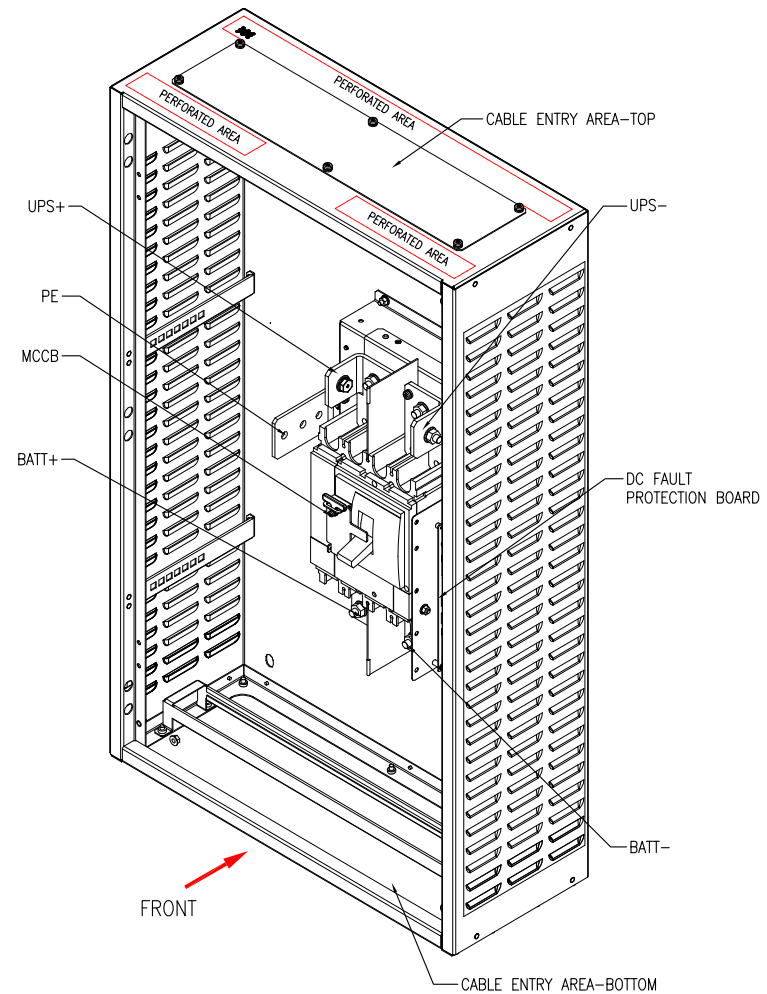


EXTERNAL ISOMETRIC VIEW



INTERNAL ISOMETRIC VIEW
(FRONT DOOR NOT SHOWN)

SPECIFICATIONS:

Circuit breaker	NSX1200NDC rated current 1000A
Maximum configuration 1000A	1 hour of runtime
Number of strings per GVXBBB630AH	1
Nominal battery voltage	480 V DC
Maximum short circuit level	50 kA

1000A Battery breaker trip setting (Ir) according to string number and UPS Rating Im:2500		
Number of Strings	1000kW (Expandable to 1250kW), 1250kW	1000kW (Expandable to 1500kW), 1250kW (Expandable to 1500kW), 1500kW
3 and below	NA	NA
4	0.9	1
5	0.7	0.9
6	NA	0.7
7 and above	NA	NA

NOTES:

1. INSTALLATION SHALL COMPLY WITH ALL APPLICABLE NATIONAL, STATE AND LOCAL ELECTRICAL REGULATIONS.
2. REFER TO PRODUCT DOCUMENTATION FOR ADDITIONAL DETAILS PRIOR TO INSTALLATION AND SITE PREPARATION WORK.

THIS DRAWING AND SPECIFICATIONS HEREIN ARE THE PROPERTY OF SCHNEIDER ELECTRIC AND SHALL NOT BE COPIED, REPRODUCED OR USED IN WHOLE OR IN PART, AS THE BASIS FOR THE MANUFACTURE OR SALE OF ITEMS WITHOUT WRITTEN PERMISSION FROM SCHNEIDER ELECTRIC. THIS DRAWING IS BASED UPON LATEST AVAILABLE INFORMATION AND IS SUBJECT TO CHANGE WITHOUT NOTICE.

Schneider Electric

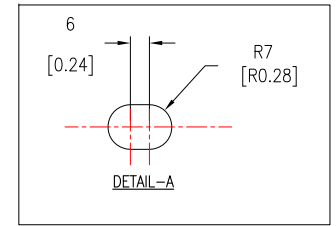
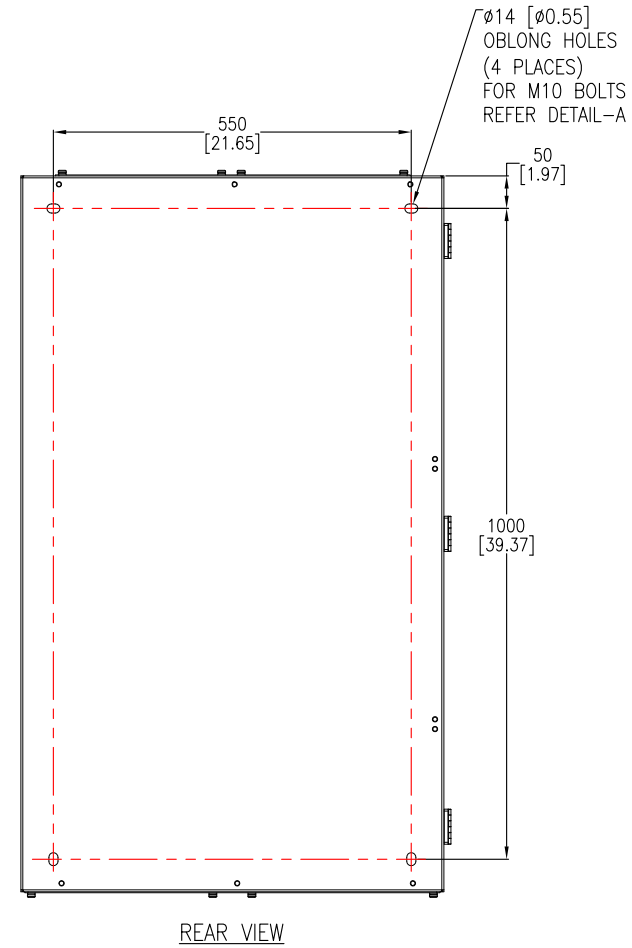
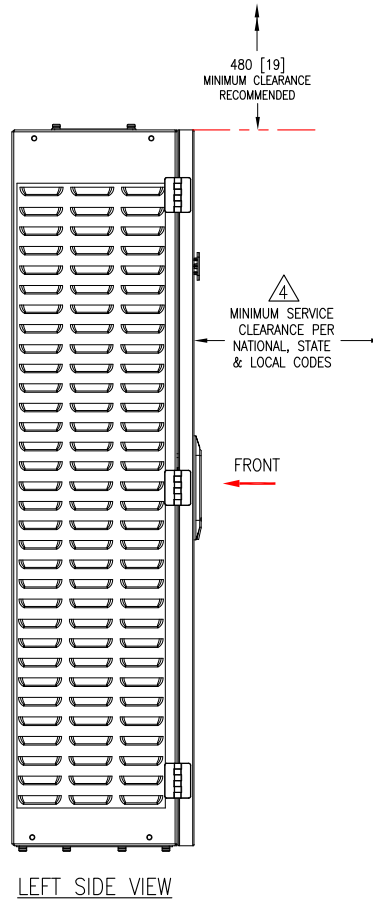
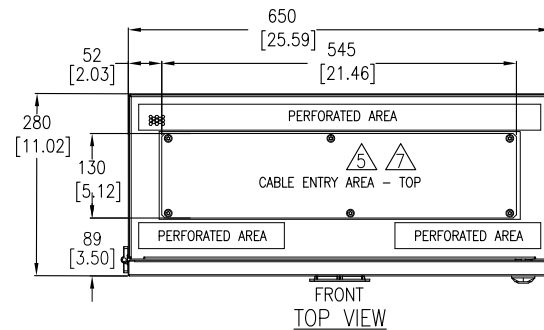
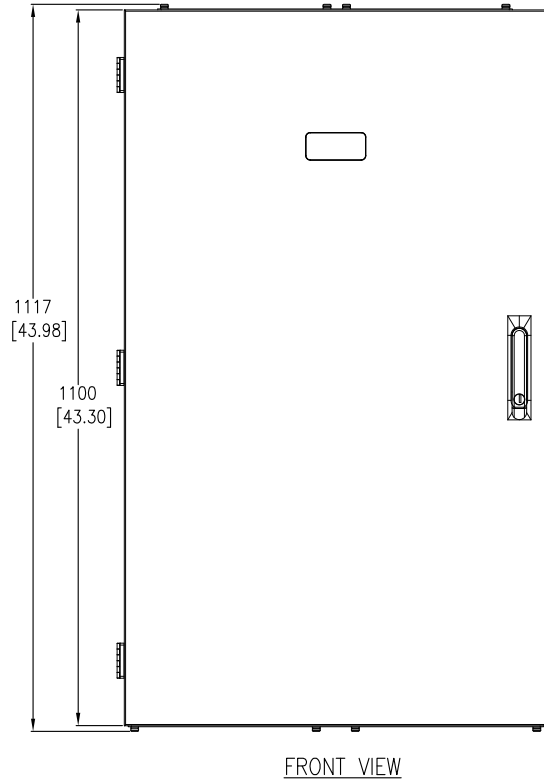
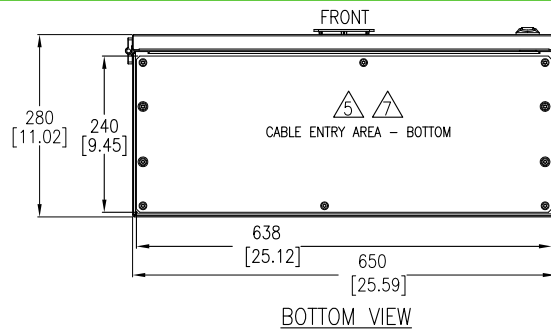
TITLE: GALAXY VX BATTERY BREAKER BOX 1000AH ISOMETRIC VIEW

PROJECT: SUBMITTAL DRAWINGS SHEET 1 OF 4

DWG NO: GVXBBB1000AH

DRAWN: BALAMURUGAN	09-MAR-17
ENGINEER: W HU	08-JUN-17
APPROVED: D M	08-JUN-17

REV. 0
FIRST ANGLE PROJECTION



NOTES:

1. INSTALLATION SHALL COMPLY WITH ALL APPLICABLE NATIONAL, STATE AND LOCAL ELECTRICAL REGULATIONS.
2. REFER TO PRODUCT DOCUMENTATION FOR ADDITIONAL DETAILS PRIOR TO INSTALLATION AND SITE PREPARATION WORK.
3. ALL DIMENSIONS ARE IN MILLIMETERS [INCHES].
- △ 4. FRONT ACCESS REQUIRED FOR SERVICE.
- △ 5. CABLE ENTRY: DRILL/PUNCH HOLES (RECOMMENDED HOLE SIZE FOR POWER: Ø50mm, FOR PE/SIGNAL: CABLE: Ø32mm). USE APPROPRIATE CABLE PROTECTION AROUND HOLE BEFORE CABLING IS INSTALLED.
6. ALL DIMENSIONS EXCLUDES SCREW PROJECTIONS OUTSIDE THE ENCLOSURE.
- △ 7. CONNECT UPS CABLE FROM TOP OR BOTTOM, CONNECT BATTERY CABLE ONLY FROM BOTTOM.
8. THE WEIGHT OF THE UNIT IS 65 kg [143 lb].
9. COLOR: RAL 9003 WHITE.
10. PROTECTION CLASS: IP20.

THIS DRAWING AND SPECIFICATIONS HEREIN ARE THE PROPERTY OF SCHNEIDER ELECTRIC AND SHALL NOT BE COPIED, REPRODUCED OR USED IN WHOLE OR IN PART, AS THE BASIS FOR THE MANUFACTURE OR SALE OF ITEMS WITHOUT WRITTEN PERMISSION FROM SCHNEIDER ELECTRIC. THIS DRAWING IS BASED UPON LATEST AVAILABLE INFORMATION AND IS SUBJECT TO CHANGE WITHOUT NOTICE.

Schneider Electric

TITLE: GALAXY VX
BATTERY BREAKER BOX 1000AH
GENERAL ARRANGEMENT

DWG NO: GVXBBB1000AH

REV. 0

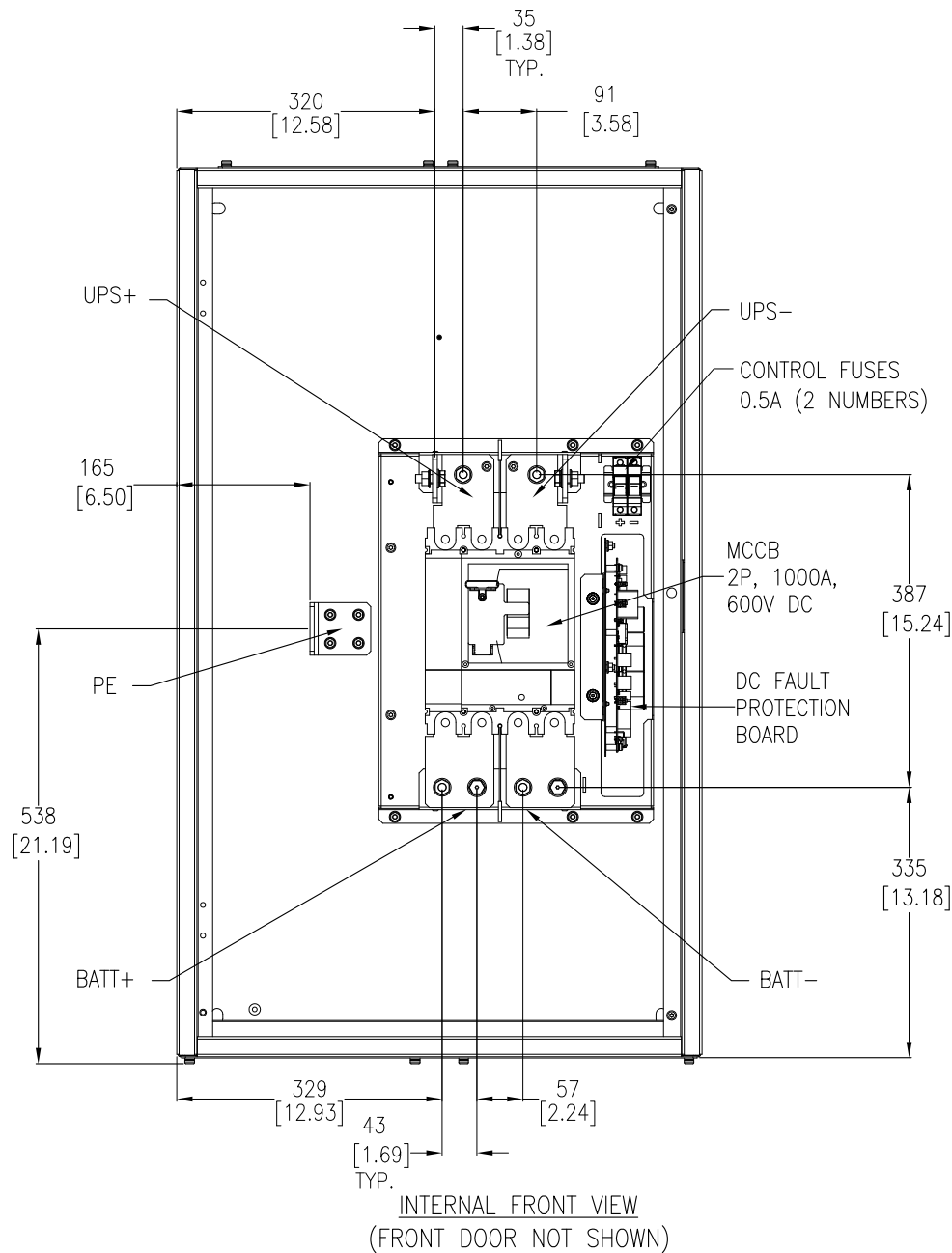
DRAWN: BALAMURUGAN 09-MAR-17

ENGINEER: W HU 08-JUN-17

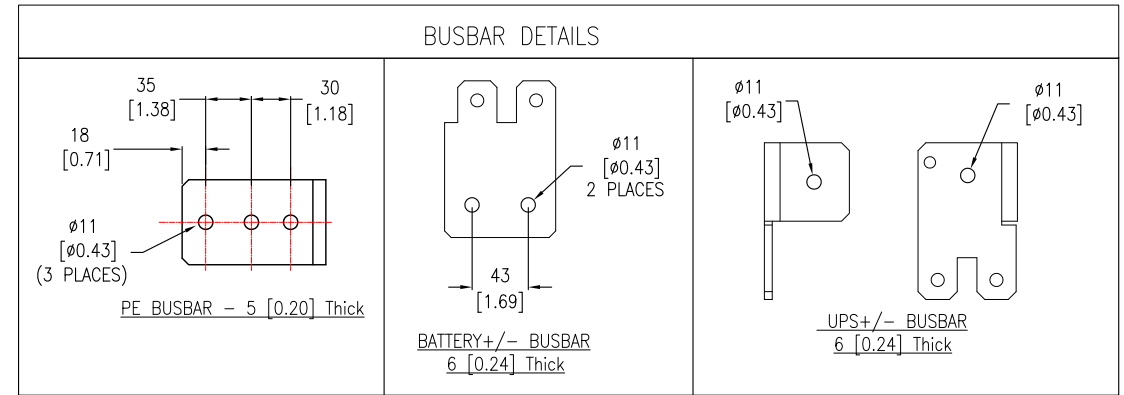
APPROVED: D M 08-JUN-17

PROJECT: SUBMITTAL DRAWINGS SHEET 2 OF 4

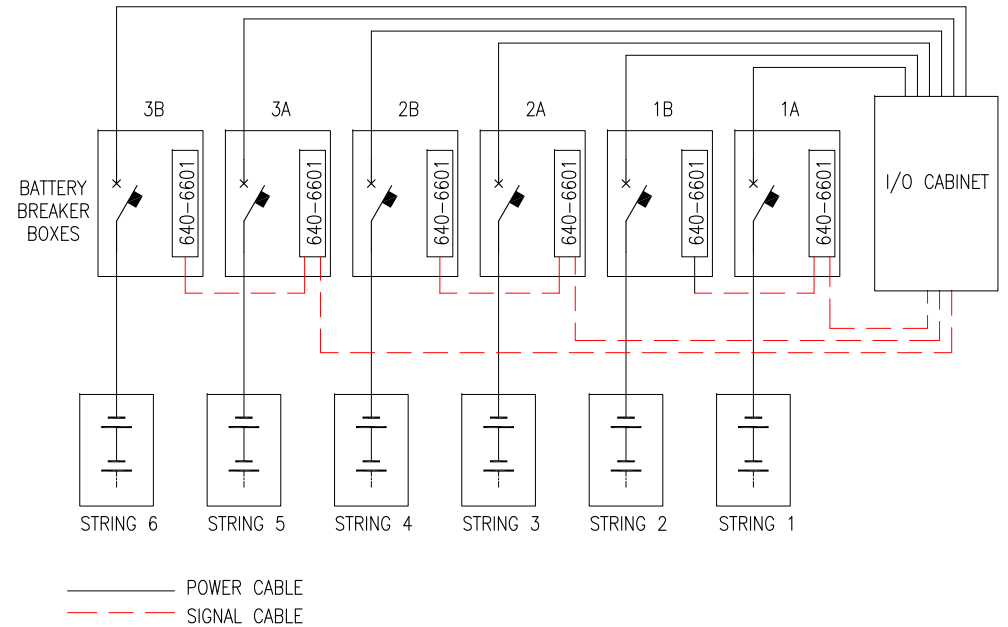
FIRST ANGLE PROJECTION



- NOTES:**
1. INSTALLATION SHALL COMPLY WITH ALL APPLICABLE NATIONAL, STATE AND LOCAL ELECTRICAL REGULATIONS.
 2. REFER TO PRODUCT DOCUMENTATION FOR ADDITIONAL DETAILS PRIOR TO INSTALLATION AND SITE PREPARATION WORK.
 3. ALL DIMENSIONS ARE IN MILLIMETERS [INCHES].
 4. SOME STRUCTURAL DETAILS HAVE BEEN OMITTED FOR THE PURPOSE OF CLARITY.



BATTERY CIRCUIT ONE LINE (TYPICAL)



THIS DRAWING AND SPECIFICATIONS HEREIN ARE THE PROPERTY OF SCHNEIDER ELECTRIC AND SHALL NOT BE COPIED, REPRODUCED OR USED IN WHOLE OR IN PART, AS THE BASIS FOR THE MANUFACTURE OR SALE OF ITEMS WITHOUT WRITTEN PERMISSION FROM SCHNEIDER ELECTRIC. THIS DRAWING IS BASED UPON LATEST AVAILABLE INFORMATION AND IS SUBJECT TO CHANGE WITHOUT NOTICE.

Schneider Electric

TITLE: GALAXY VX
BATTERY BREAKER BOX 1000AH
INTERNAL VIEW, BUSBARS & ONE LINE

PROJECT: SUBMITTAL DRAWINGS SHEET 3 OF 4

DWG NO: GVXBBB1000AH

DRAWN: BALAMURUGAN 09-MAR-17

ENGINEER: W HU 08-JUN-17

APPROVED: D M 08-JUN-17

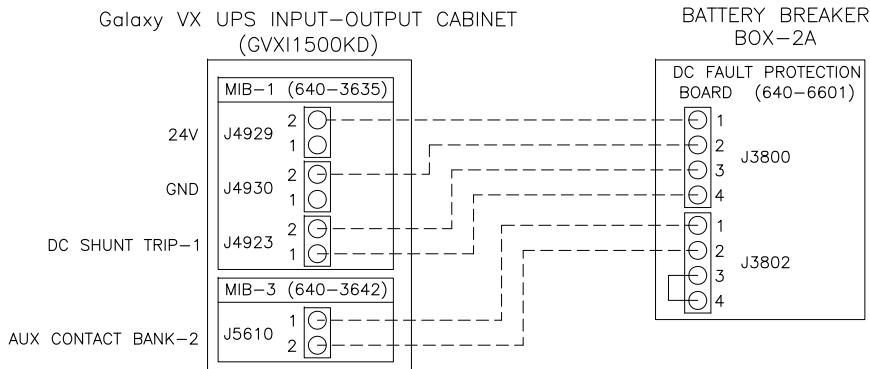
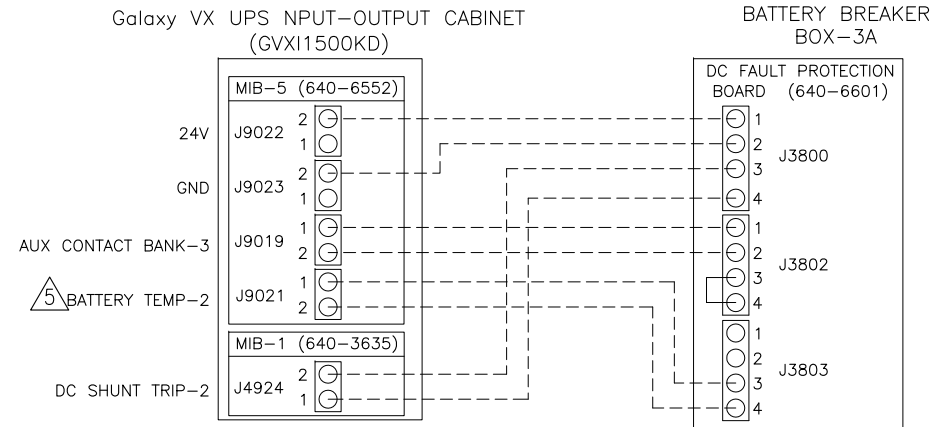
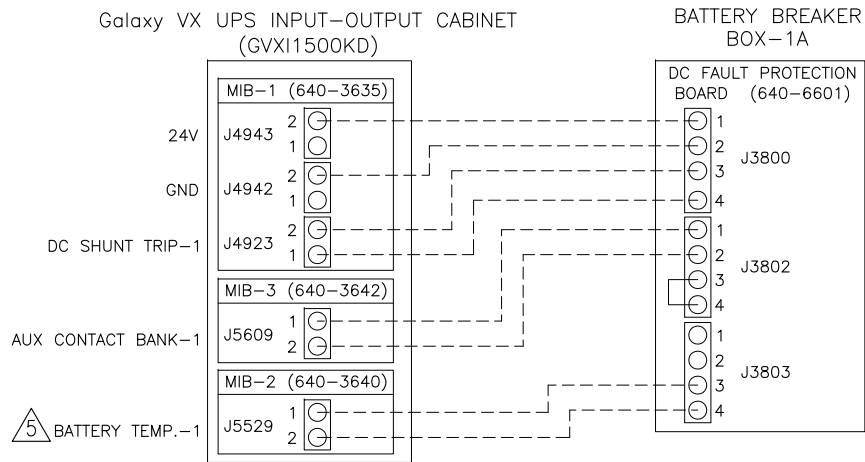
REV. 0

FIRST

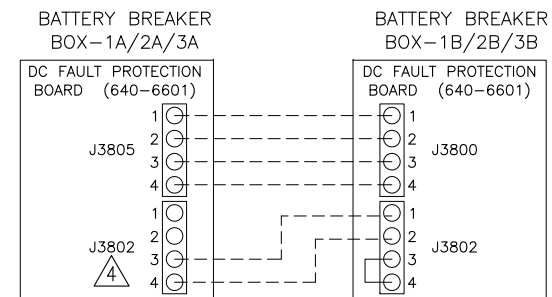
ANGLE

PROJECTION

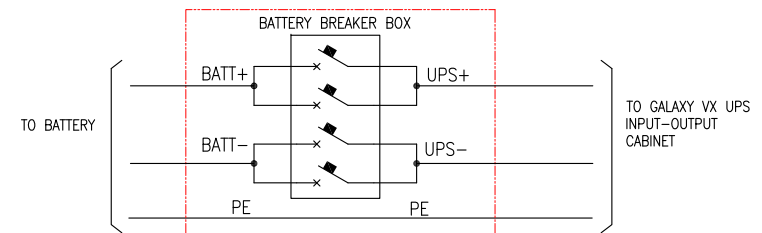
SIGNAL INTERFACE BETWEEN UPS INPUT-OUTPUT CABINET AND BATTERY BREAKER BOXs.



SIGNAL INTERFACE BETWEEN BATTERY BREAKER CABINETS 1A TO 1B, 2A TO 2B, AND 3A TO 3B



POWER CIRCUIT (TYPICAL)



1. INSTALLATION MUST COMPLY WITH ALL APPLICABLE NATIONAL, STATE AND LOCAL ELECTRICAL REGULATIONS.
2. REFER TO PRODUCT DOCUMENTATION FOR ADDITIONAL DETAILS PRIOR TO INSTALLATION AND SITE PREPARATION WORK.
3. FOR LATEST REVISION OF BOARD PART NUMBERS CONTACT SCHNEIDER ELECTRIC.
- △ 4. REMOVED THE EXISTING JUMPER BETWEEN TERMINALS 3 AND 4.
5. THE TEMPERATURE SENSORS CAN BE INSTALLED IN ANY OF THE BATTERY BREAKER BOX.
6. TEMPERATURE SENSOR CABLE LENGTH: 2.8m AND 2.4m OUT OF CABINET.
7. CABLE SIZES ARE BASED ON INSTALLATION METHOD "F" IN TABLE B.52.12 AND B.52.13 OF IEC 60364-5-52 WITH THE FOLLOWING ASSERTIONS:
 - 90°C CONDUCTORS.
 - AN AMBIENT TEMPERATURE OF 30°C.
 - USE OF COPPER OR ALUMINUM CONDUCTORS.
 - IF THE AMBIENT TEMPERATURE IS GREATER THAN 30°C, LARGER CONDUCTORS ARE TO BE SELECTED IN ACCORDANCE WITH THE CORRECTION FACTORS OF THE IEC.
8. PLACE THE BATTERY BREAKER BOX AS CLOSE TO THE BATTERY BANK AS POSSIBLE TO LIMIT THE LENGTH OF UNPROTECTED BATTERY CABLES.

THIS DRAWING AND SPECIFICATIONS HEREIN ARE THE PROPERTY OF SCHNEIDER ELECTRIC AND SHALL NOT BE COPIED, REPRODUCED OR USED IN WHOLE OR IN PART, AS THE BASIS FOR THE MANUFACTURE OR SALE OF ITEMS WITHOUT WRITTEN PERMISSION FROM SCHNEIDER ELECTRIC. THIS DRAWING IS BASED UPON LATEST AVAILABLE INFORMATION AND IS SUBJECT TO CHANGE WITHOUT NOTICE.

Schneider Electric

TITLE: GALAXY VX
BATTERY BREAKER BOX 1000AH
INTERFACE DETAILS

PROJECT: SUBMITTAL DRAWINGS SHEET 4 OF 4

DWG NO: GVXBBB1000AH

ENGINEER: W HU

APPROVED: D M

09-MAR-17

08-JUN-17

08-JUN-17

REV. 0

FIRST ANGLE PROJECTION