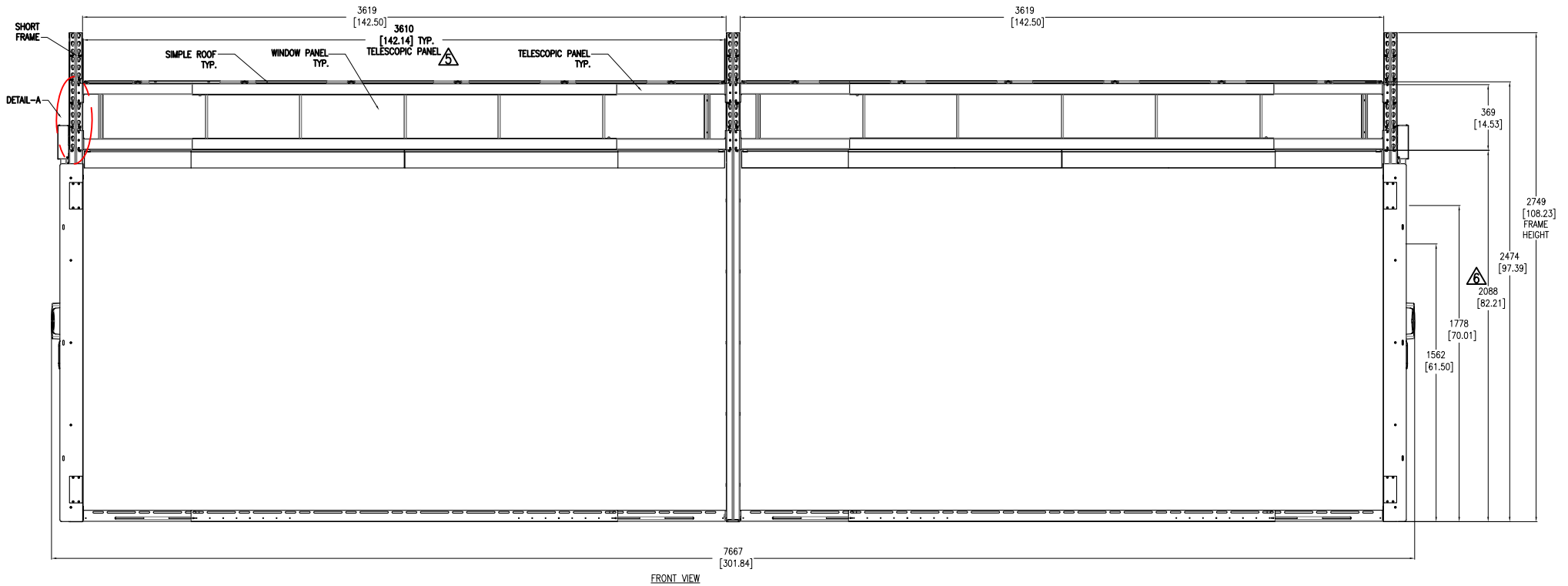
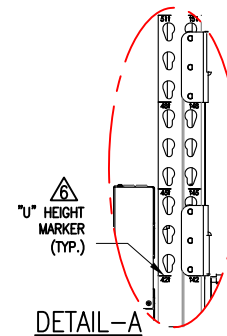


**SHORT FRAME-DOUBLE POD-SIMPLE ROOF WITHOUT RACKS AND DISTRIBUTION PANEL**



**NOTES:**

1. INSTALLATION SHALL COMPLY WITH ALL APPLICABLE NATIONAL, STATE AND LOCAL ELECTRICAL REGULATIONS.
2. REFER TO PRODUCT DOCUMENTATION FOR ADDITIONAL DETAILS PRIOR TO INSTALLATION AND SITE PREPARATION WORK.
3. ALL DIMENSIONS ARE IN MILLIMETERS [INCHES].
4. WEIGHT - REFER TO THE RESPECTIVE SUBMITTALS.
- △ 5. THIS DIMENSION MAY VARY AS PER RACK WIDTH AND NUMBER OF RACK.  
TELESCOPING BEAM CAN ACCOMMODATE ANY COMBINATION OF RACKS FROM 8-12 FEET.
- △ 6. SHORT FRAME CAN ACCOMMODATE UP TO 48U, REFER TO TABLE FOR DETAILS.
7. THIS DRAWING IS FOR TYPICAL CONFIGURATION.



RACK HEIGHT	
U	mm [inch]
42U	1991 [78.39]
45U	2124 [83.64]
48U	2258 [88.90]

THIS DRAWING AND SPECIFICATIONS HEREIN ARE THE PROPERTY OF SCHNEIDER ELECTRIC AND SHALL NOT BE COPIED, REPRODUCED OR USED IN WHOLE OR IN PART, AS THE BASIS FOR THE MANUFACTURE OR SALE OF ITEMS WITHOUT WRITTEN PERMISSION FROM SCHNEIDER ELECTRIC. THIS DRAWING IS BASED UPON LATEST AVAILABLE INFORMATION AND IS SUBJECT TO CHANGE WITHOUT NOTICE.

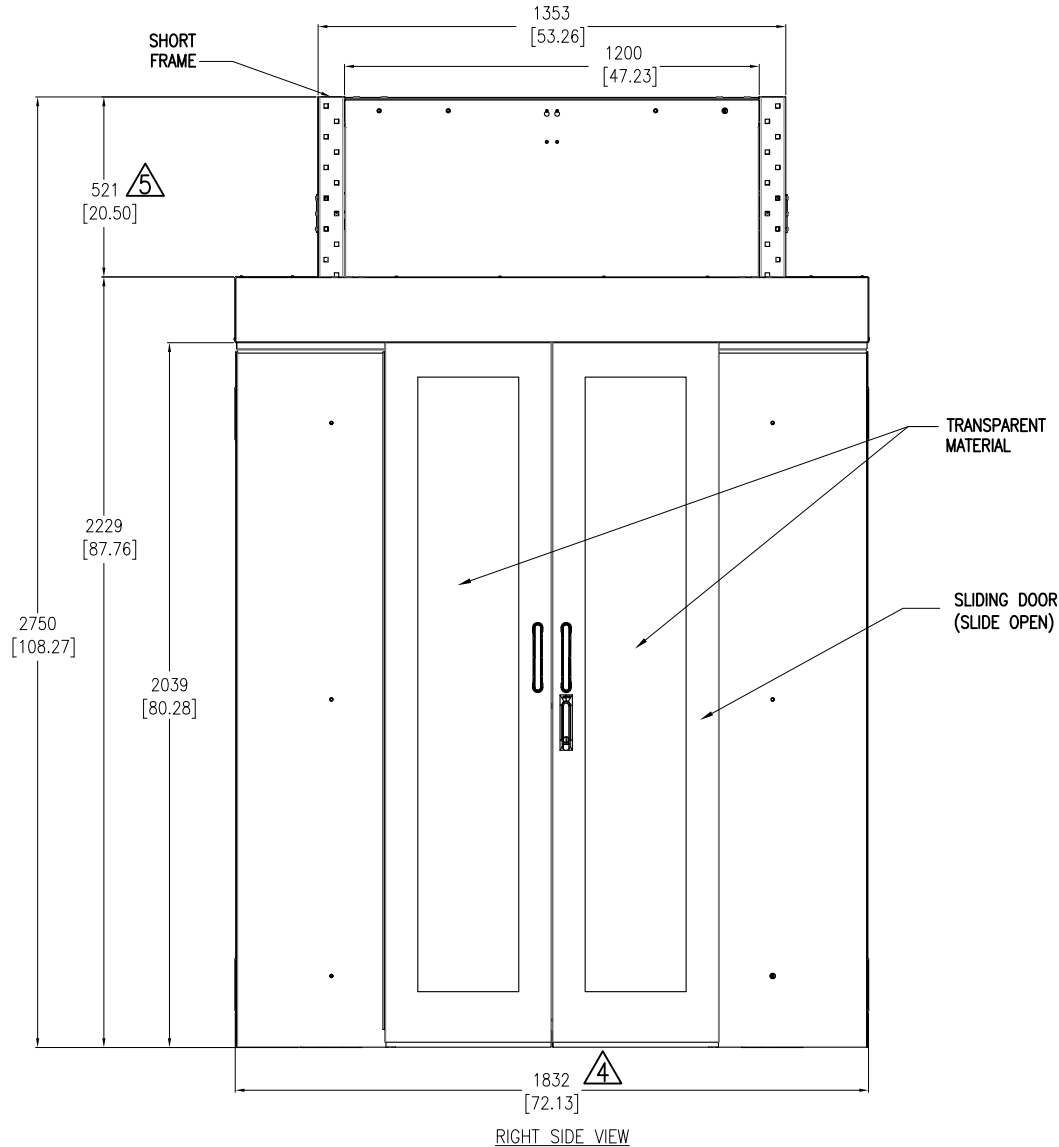


TITLE: HYPERPOD  
SHORT FRAME, DOUBLE POD, SIMPLE ROOF  
WITHOUT RACK AND DISTRIBUTION PANEL  
FRONT VIEW

PROJECT: SUBMITTAL DRAWINGS SHEET 1 OF 3

DWG NO:	SFDPSRWORD	REV.	0
DRAWN BY:	BALA	26-MAY-17	FIRST
ENGINEER:	A COTTER	26-MAY-17	ANGLE
APPROVED BY:	SYMONS	26-MAY-17	PROJ

**SHORT FRAME-DOUBLE POD-SIMPLE ROOF WITHOUT RACKS AND DISTRIBUTION PANEL**



**NOTES:**

1. INSTALLATION SHALL COMPLY WITH ALL APPLICABLE NATIONAL, STATE AND LOCAL ELECTRICAL REGULATIONS.
2. REFER TO PRODUCT DOCUMENTATION FOR ADDITIONAL DETAILS PRIOR TO INSTALLATION AND SITE PREPARATION WORK.
3. ALL DIMENSIONS ARE IN MILLIMETERS [INCHES].
- △ 4. OVER ALL CONTAINMENT POD WIDTH DIMENSION MAY VARY AS PER THE COMPONENT SELECTED, BASED ON THE DEPTH OF THE RACK. REFER TO TABLE FOR DETAILS.
- △ 5. RACK AND ROOF HEIGHT VARY AS PER THE COMPONENT SELECTED.
6. THIS DRAWING IS FOR TYPICAL CONFIGURATION.



RACK DEPTH
mm [inch]
825 [32.480]
1070 [42.125]
1200 [47.244]

THIS DRAWING AND SPECIFICATIONS HEREIN ARE THE PROPERTY OF SCHNEIDER ELECTRIC AND SHALL NOT BE COPIED, REPRODUCED OR USED IN WHOLE OR IN PART, AS THE BASIS FOR THE MANUFACTURE OR SALE OF ITEMS WITHOUT WRITTEN PERMISSION FROM SCHNEIDER ELECTRIC. THIS DRAWING IS BASED UPON LATEST AVAILABLE INFORMATION AND IS SUBJECT TO CHANGE WITHOUT NOTICE.



TITLE: HYPERPOD  
SHORT FRAME, DOUBLE POD, SIMPLE ROOF  
WITHOUT RACK AND DISTRIBUTION PANEL  
RIGHT SIDE VIEW

PROJECT: SUBMITTAL DRAWINGS SHEET 2 OF 3

DWG NO: SFDPSRWORD

DRAWN BY: BALA 26-MAY-17

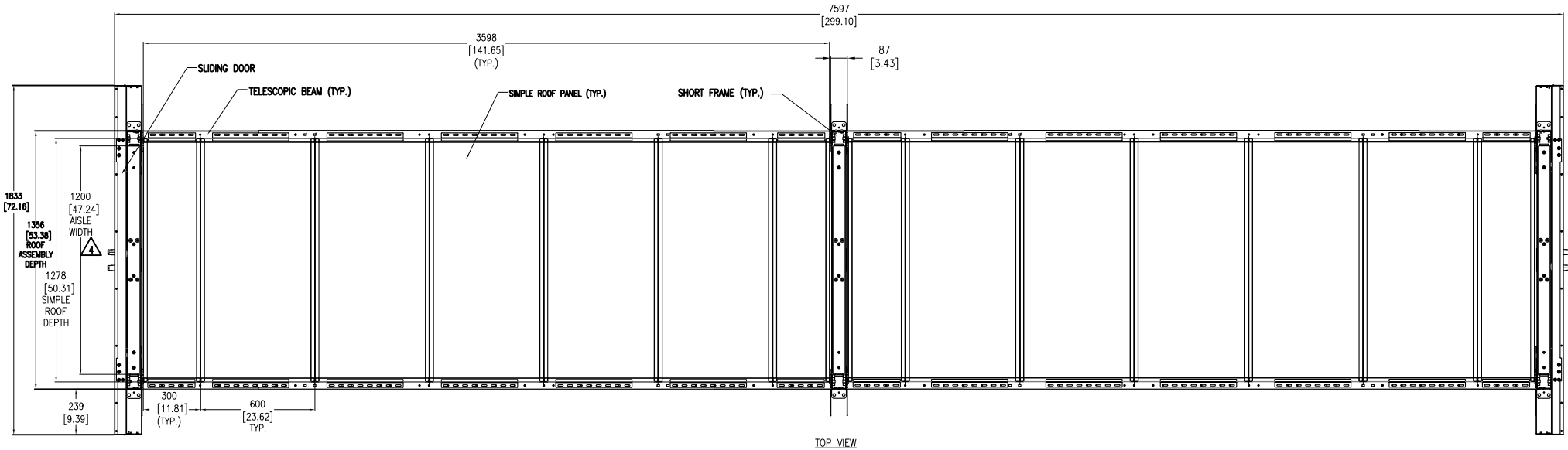
ENGINEER: A COTTER 26-MAY-17

APPROVED BY: SYMONS 26-MAY-17

REV. 0

FIRST ANGLE PROJ

# SHORT FRAME-DOUBLE POD-SIMPLE ROOF WITHOUT RACKS AND DISTRIBUTION PANEL



AISLE WIDTH	
Feet	mm [inch]
3	914.4 [36.0]
4	1219.2 [48.0]
5	1524.0 [60.0]
6	1828.8 [72.0]

**NOTES:**

1. INSTALLATION SHALL COMPLY WITH ALL APPLICABLE NATIONAL, STATE AND LOCAL ELECTRICAL REGULATIONS.
2. REFER TO PRODUCT DOCUMENTATION FOR ADDITIONAL DETAILS PRIOR TO INSTALLATION AND SITE PREPARATION WORK.
3. ALL DIMENSIONS ARE IN MILLIMETERS [INCHES].
- △4. ACROSS AISLE DIMENSION MAY VARY AS PER THE REQUIREMENT. TABLE SHOWS STANDARD CONFIGURATION.
5. THIS DRAWING IS FOR TYPICAL CONFIGURATION.

THIS DRAWING AND SPECIFICATIONS HEREIN ARE THE PROPERTY OF SCHNEIDER ELECTRIC AND SHALL NOT BE COPIED, REPRODUCED OR USED IN WHOLE OR IN PART, AS THE BASIS FOR THE MANUFACTURE OR SALE OF ITEMS WITHOUT WRITTEN PERMISSION FROM SCHNEIDER ELECTRIC. THIS DRAWING IS BASED UPON LATEST AVAILABLE INFORMATION AND IS SUBJECT TO CHANGE WITHOUT NOTICE.



TITLE: HYPERPOD SHORT FRAME, DOUBLE POD, SIMPLE ROOF WITHOUT RACK AND DISTRIBUTION PANEL TOP VIEW		DWG NO: SFDPSRWORD	REV. 0
PROJECT: SUBMITTAL DRAWINGS	SHEET 3 OF 3	DRAWN BY: BALA	26-MAY-17
		ENGINEER: A COTTER	26-MAY-17
		APPROVED BY: SYMONS	26-MAY-17
			FIRST ANGLE PROJ