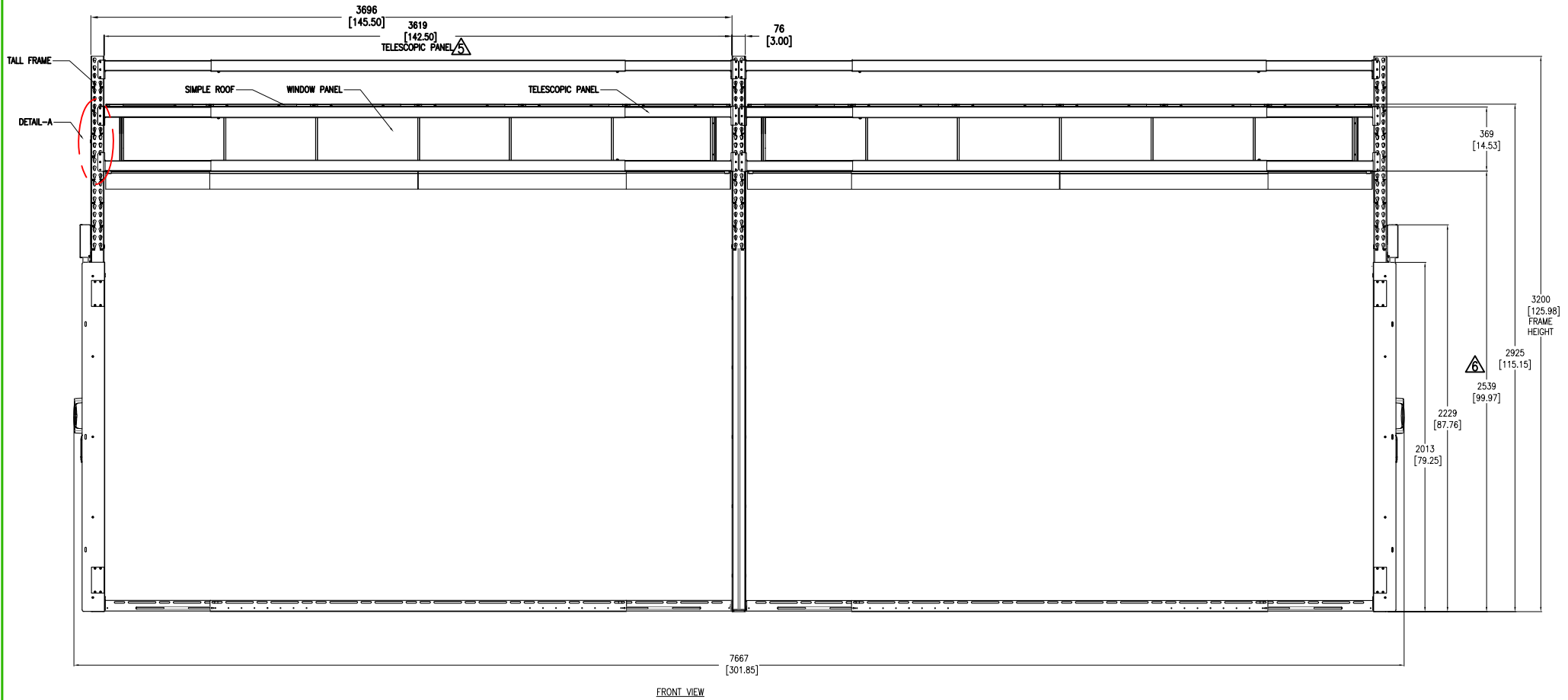
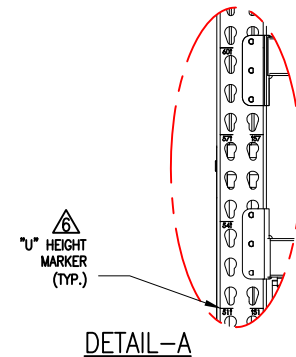


TALL FRAME-DOUBLE POD-SIMPLE ROOF WITHOUT RACKS AND DISTRIBUTION PANELS



NOTES:

1. INSTALLATION SHALL COMPLY WITH ALL APPLICABLE NATIONAL, STATE AND LOCAL ELECTRICAL REGULATIONS.
2. REFER TO PRODUCT DOCUMENTATION FOR ADDITIONAL DETAILS PRIOR TO INSTALLATION AND SITE PREPARATION WORK.
3. ALL DIMENSIONS ARE IN MILLIMETERS [INCHES].
4. WEIGHT - REFER TO THE RESPECTIVE SUBMITTALS.
- △ 5. THIS DIMENSION MAY VARY AS PER RACK WIDTH AND NUMBER OF RACK. SHOWN TYPICAL ARRANGEMENT FOR TWELVE 600mm WIDE RACKS. TELESCOPING BEAM CAN ACCOMMODATE ANY COMBINATION OF RACKS FROM 8-12 FEET.
- △ 6. TALL FRAME CAN ACCOMMODATE UP TO 52U, SHOWN TYPICAL ARRANGEMENT FOR 42U/48U RACKS. REFER TO TABLE FOR DETAILS.
7. THIS DRAWING IS FOR TYPICAL CONFIGURATION.



| RACK HEIGHT | |
|-------------|--------------|
| U | mm [inch] |
| 42U | 1991 [78.39] |
| 45U | 2124 [83.64] |
| 48U | 2258 [88.90] |

THIS DRAWING AND SPECIFICATIONS HEREIN ARE THE PROPERTY OF SCHNEIDER ELECTRIC AND SHALL NOT BE COPIED, REPRODUCED OR USED IN WHOLE OR IN PART, AS THE BASIS FOR THE MANUFACTURE OR SALE OF ITEMS WITHOUT WRITTEN PERMISSION FROM SCHNEIDER ELECTRIC. THIS DRAWING IS BASED UPON LATEST AVAILABLE INFORMATION AND IS SUBJECT TO CHANGE WITHOUT NOTICE.



TITLE: HYPERPOD
TALL FRAME, DOUBLE POD, SIMPLE ROOF
WITHOUT RACKS AND DISTRIBUTION PANEL
FRONT VIEW

PROJECT: SUBMITTAL DRAWINGS SHEET 1 OF 3

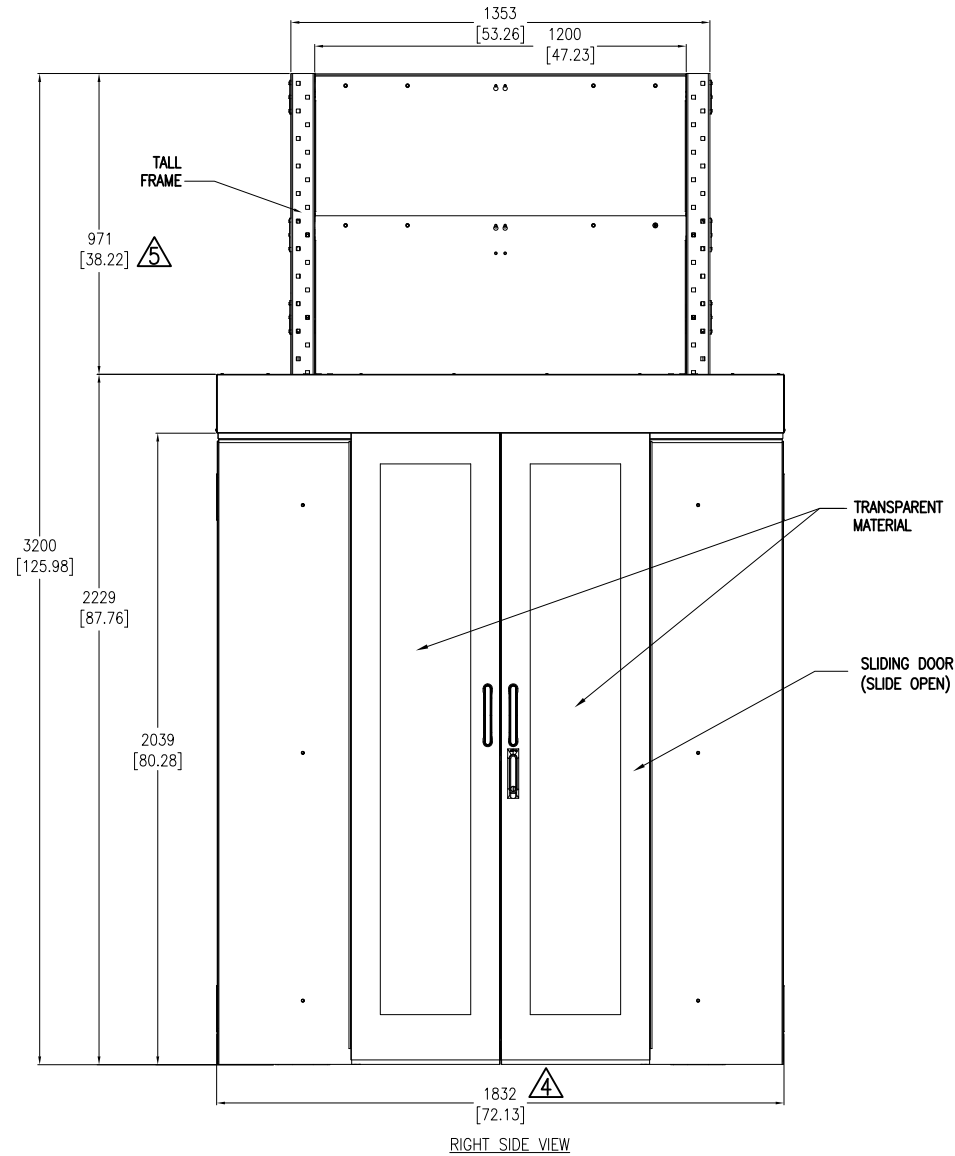
DWG NO: TFDPSFWORD REV. 1

DRAWN BY: BALA 30-JUN-17 FIRST ANGLE PROJ

ENGINEER: A COTTER 30-JUN-17

APPROVED BY: SYMONS 30-JUN-17

TALL FRAME-DOUBLE POD-SIMPLE ROOF WITHOUT RACKS AND DISTRIBUTION PANELS



RIGHT SIDE VIEW

NOTES:

1. INSTALLATION SHALL COMPLY WITH ALL APPLICABLE NATIONAL, STATE AND LOCAL ELECTRICAL REGULATIONS.
2. REFER TO PRODUCT DOCUMENTATION FOR ADDITIONAL DETAILS PRIOR TO INSTALLATION AND SITE PREPARATION WORK.
3. ALL DIMENSIONS ARE IN MILLIMETERS [INCHES].
- △ 4. OVER ALL CONTAINMENT POD WIDTH DIMENSION MAY VARY AS PER THE COMPONENT SELECTED, BASED ON THE DEPTH OF THE RACK. REFER TO TABLE FOR DETAILS.
- △ 5. RACK AND ROOF HEIGHT VARY AS PER THE COMPONENT SELECTED.
6. THIS DRAWING IS FOR TYPICAL CONFIGURATION.



| RACK DEPTH | |
|------------|----------|
| mm | [inch] |
| 825 | [32.480] |
| 1070 | [42.125] |
| 1200 | [47.244] |

THIS DRAWING AND SPECIFICATIONS HEREIN ARE THE PROPERTY OF SCHNEIDER ELECTRIC AND SHALL NOT BE COPIED, REPRODUCED OR USED IN WHOLE OR IN PART, AS THE BASIS FOR THE MANUFACTURE OR SALE OF ITEMS WITHOUT WRITTEN PERMISSION FROM SCHNEIDER ELECTRIC. THIS DRAWING IS BASED UPON LATEST AVAILABLE INFORMATION AND IS SUBJECT TO CHANGE WITHOUT NOTICE.



TITLE: HYPERPOD
TALL FRAME, DOUBLE POD, SIMPLE ROOF
WITHOUT RACKS AND DISTRIBUTION PANEL
RIGHT SIDE VIEW

PROJECT: SUBMITTAL DRAWINGS SHEET 2 OF 3

DWG NO: TFDPSFWORD

DRAWN BY: BALA 30-JUN-17

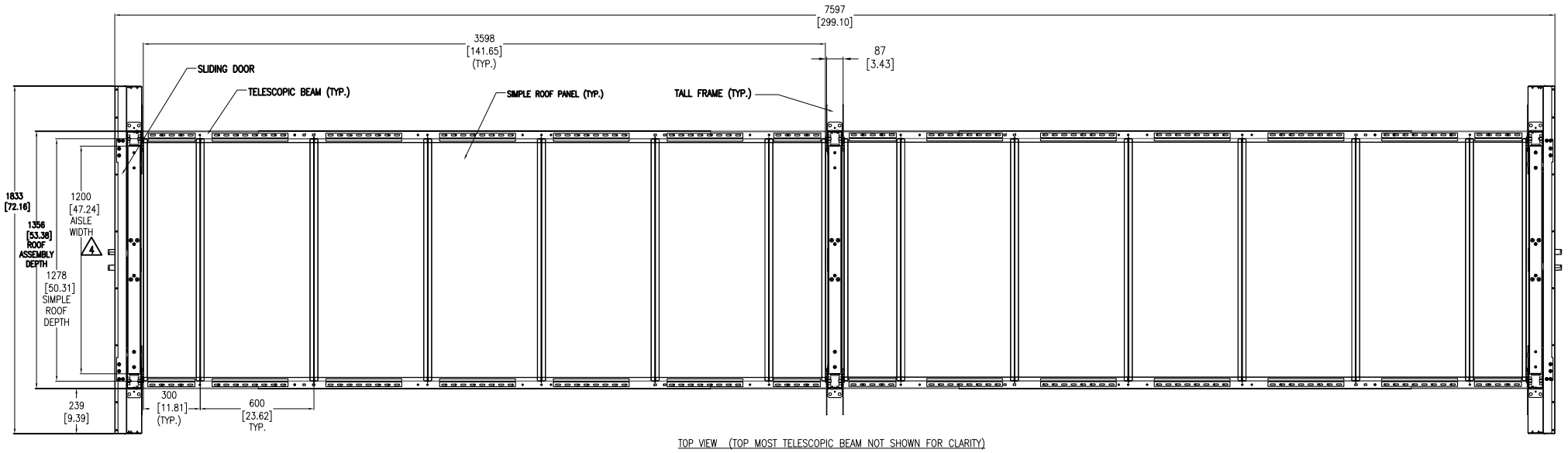
ENGINEER: A COTTER 30-JUN-17

APPROVED BY: SYMONS 30-JUN-17

REV. 1

FIRST ANGLE PROJ

TALL FRAME-DOUBLE POD-SIMPLE ROOF WITHOUT RACKS AND DISTRIBUTION PANELS



NOTES:

1. INSTALLATION SHALL COMPLY WITH ALL APPLICABLE NATIONAL, STATE AND LOCAL ELECTRICAL REGULATIONS.
2. REFER TO PRODUCT DOCUMENTATION FOR ADDITIONAL DETAILS PRIOR TO INSTALLATION AND SITE PREPARATION WORK.
3. ALL DIMENSIONS ARE IN MILLIMETERS [INCHES].
- △4. ACROSS AISLE DIMENSION MAY VARY AS PER THE REQUIREMENT. TABLE SHOWS STANDARD CONFIGURATION.
5. THIS DRAWING IS FOR TYPICAL CONFIGURATION.



| AISLE WIDTH | |
|-------------|---------------|
| Feet | mm [inch] |
| 3 | 914.4 [36.0] |
| 4 | 1219.2 [48.0] |
| 5 | 1524.0 [60.0] |
| 6 | 1828.8 [72.0] |

THIS DRAWING AND SPECIFICATIONS HEREIN ARE THE PROPERTY OF SCHNEIDER ELECTRIC AND SHALL NOT BE COPIED, REPRODUCED OR USED IN WHOLE OR IN PART, AS THE BASIS FOR THE MANUFACTURE OR SALE OF ITEMS WITHOUT WRITTEN PERMISSION FROM SCHNEIDER ELECTRIC. THIS DRAWING IS BASED UPON LATEST AVAILABLE INFORMATION AND IS SUBJECT TO CHANGE WITHOUT NOTICE.



TITLE: HYPERPOD
TALL FRAME, DOUBLE POD, SIMPLE ROOF
WITHOUT RACKS AND DISTRIBUTION PANEL
TOP VIEW

PROJECT: SUBMITTAL DRAWINGS SHEET 3 OF 3

DWG NO: TFDPSFWORD REV. 1

DRAWN BY: BALA 30-JUN-17 FIRST

ENGINEER: A COTTER 30-JUN-17 ANGLE

APPROVED BY: SYMONS 30-JUN-17 PROJ