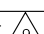
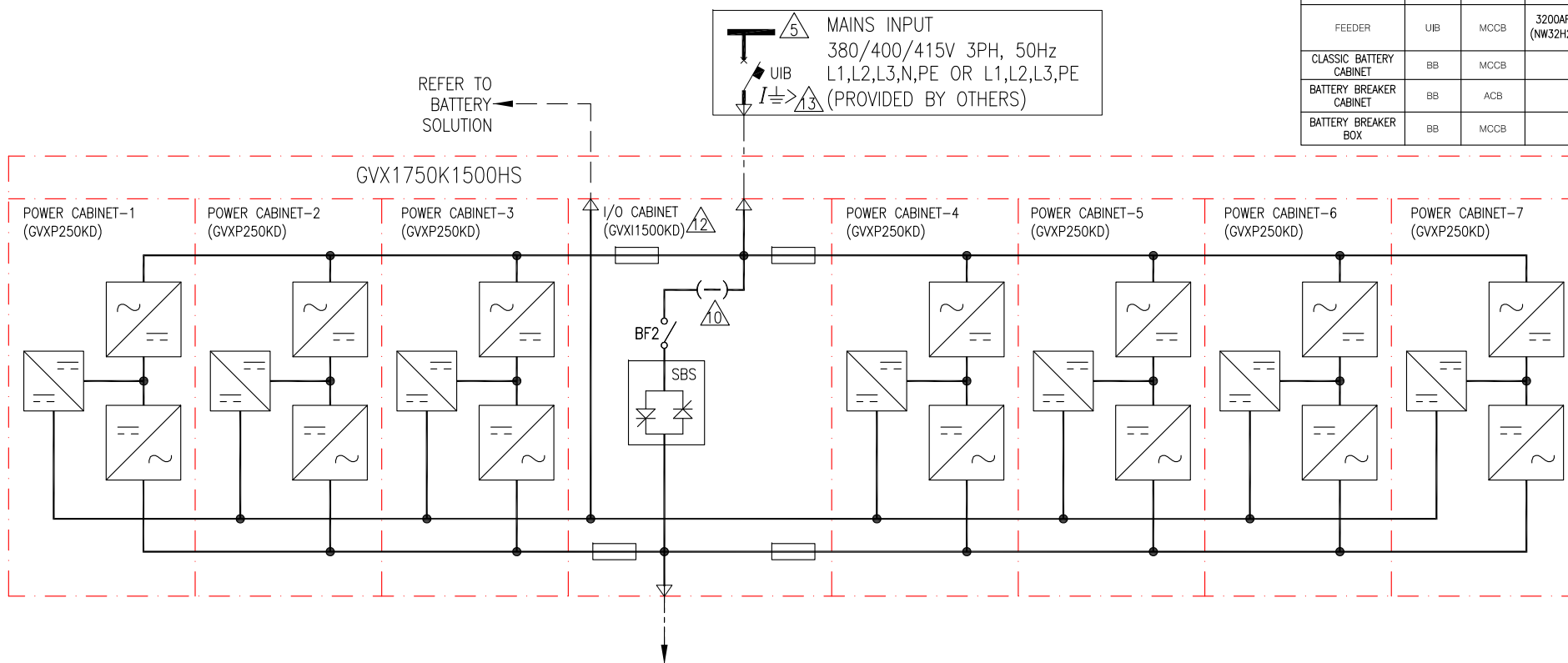


DEVICE RATINGS (RECOMMENDED/PRESENT) (DEVICE MAKE-SCHNEIDER ELECTRIC)					
LOCATION	DEVICE ID	DEVICE	RATING		
			@380V	@400V	@415V
FEEDER	UIB	MCCB	3200AF (NW32H2)	3200AF (NW32H2)	3200AF (NW32H2)
CLASSIC BATTERY CABINET	BB	MCCB	600AF		
BATTERY BREAKER CABINET	BB	ACB	4000AF		
BATTERY BREAKER BOX	BB	MCCB	600AF/1000AF 		



OUTPUT-1500kW,
380/400/415V, 3PH, 50Hz, L1,L2,L3,N,PE OR L1,L2,L3,PE

LEGEND:
 --- AC CABLE (PROVIDED BY OTHERS)
 --- 500VDC CABLE (PROVIDED BY OTHERS)

NOTES:

1. INSTALLATION SHALL COMPLY WITH ALL APPLICABLE NATIONAL, STATE AND LOCAL CODES.
2. REFER TO PRODUCT INSTALLATION DOCUMENTATION FOR SITE PREPARATIONS.
3. DRAWING DEPICTS POWER SYSTEM CONNECTIONS AND IS NOT REPRESENTATIVE OF PHYSICAL LAYOUT. REFER TO MECHANICAL DRAWINGS FOR EQUIPMENT LAYOUT.
4. FINAL SELECTIONS ARE RESPONSIBILITY OF ENGINEER OF RECORDS BASED ON INSTALLED CONDITIONS AND SCC/SELECTIVE CO-ORDINATION/ARC-FLASH ANALYSIS.
- △5. INPUT AC SOURCE TO BE 3 WIRE+PE OR 4 WIRE+PE. TN, TT AND IT POWER DISTRIBUTION SYSTEM WITH NO EARTHED LINE CONDUCTORS ARE SUPPORTED.
6. BACK FEED PROTECTION "BF2" BUILT INTO UPS MODULE.
- △7. CONFIGURATION APPLICABLE FOR 7 OR 8 NUMBER OF BATTERY STRINGS.
- △8. USE OF BBC IS MANDATORY IF NUMBER OF BATTERY STRINGS ARE 3 OR LESS.
- △9. CONFIGURATION APPLICABLE IF NUMBER OF BATTERY STRINGS ARE BETWEEN 4 AND 8.
BATTERY BREAKER RATING (PER STRING) IS 1000A IF NUMBER OF BATTERY STRINGS ARE FROM 4 TO 6.
BATTERY BREAKER RATING (PER STRING) IS 600A IF NUMBER OF BATTERY STRINGS ARE 7 OR 8.
- △10. SINGLE FEED KIT (OH-9161) IS PART OF UPS SKU AND MUST BE INSTALLED FOR THIS CONFIGURATION.
- △11. SKUs ARE ETO (ENGINEER TO ORDER) ITEMS.
- △12. MAXIMUM INPUT SHORT-CIRCUIT WITHSTAND: $I_{cw}=100ka$ RMS SYMMETRICAL.
- △13. A READILY ACCESSIBLE BREAKER IS REQUIRED FOR UPSTREAM CURRENT PROTECTION.
MAXIMUM FAULT CURRENT DISCONNECTION TIME: 46 SECONDS@200% I_n .

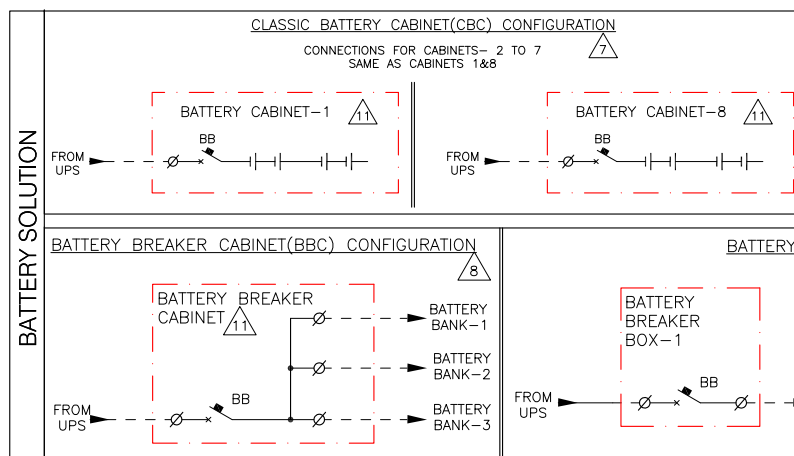
THIS DRAWING AND SPECIFICATIONS HEREIN ARE THE PROPERTY OF SCHNEIDER ELECTRIC AND SHALL NOT BE COPIED, REPRODUCED OR USED IN WHOLE OR IN PART, AS THE BASIS FOR THE MANUFACTURE OR SALE OF ITEMS WITHOUT WRITTEN PERMISSION FROM SCHNEIDER ELECTRIC. THIS DRAWING IS BASED UPON LATEST AVAILABLE INFORMATION AND IS SUBJECT TO CHANGE WITHOUT NOTICE.

Schneider Electric

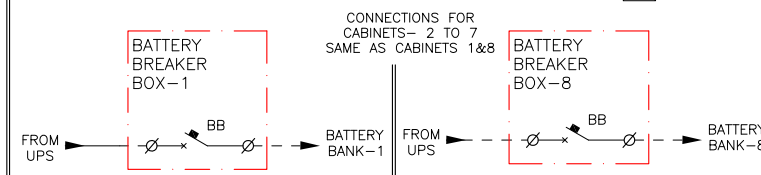
TITLE: GALAXY VX
 Input: 380/400/415V AC 3PH 50Hz SINGLE FEED
 Output: 380/400/415V AC 3PH 50Hz 1500kW
 1500kW UPS 1 MOD INTERNAL REDUNDANCY w BATT
 SYSTEM ONE LINE DIAGRAM

PROJECT: DRAWINGS **SHEET** 1 OF 1

CURRENT DATA IN AMPS UPS1500KW (SKU# GVX1750K1500HS)			
	@380V	@400V	@415V
NOMINAL INPUT (NO CHARGING)	2401	2279	2194
MAXIMUM INPUT CURRENT**	2657	2552	2457
NOMINAL OUTPUT CURRENT	2279	2165	2087
FULL LOAD BATTERY CURRENT (@ VMIN)	4092		
** NOMINAL INPUT VOLTAGE AND FULL CHARGE.			



BATTERY BREAKER BOX(BBB) CONFIGURATION



DWG NO: GVS1750K1500HBC1M1-SD	REV. 6
DRAWN BY: BALA	30-MAY-18
ENGINEER: S ANDERSEN	30-MAY-18
APPROVED BY: H N / D M / G S	30-MAY-18
PROJECTION	N. A