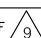
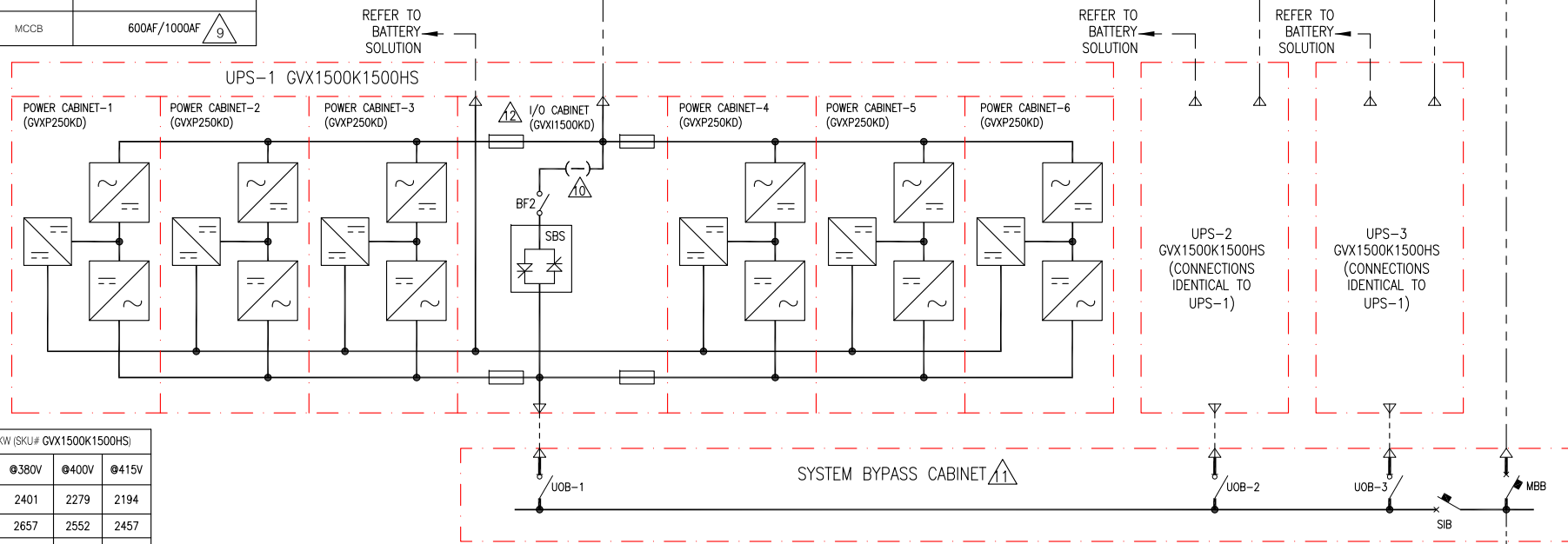


DEVICE RATINGS (RECOMMENDED/PRESENT) (DEVICE MAKE-SCHNEIDER ELECTRIC)					
LOCATION	DEVICE ID	DEVICE	RATING		
			@380V	@400V	@415V
FEEDER	MIB	ACB	6300AF (NW63H1)	6300AF (NW63H1)	6300AF (NW63H1)
INPUT PANEL	UIB-1/2/3	MCCB	3200AF (NW32H2)	3200AF (NW32H2)	3200AF (NW32H2)
SYSTEM BYPASS PANEL	UOB-1/2/3	SWITCH DISCONNECT	2500AF (INS2500)	2500AF (INS2500)	2500AF (INS2500)
	SIB	ACB	6300AF (NW63H1)	5000AF (NW50H1)	5000AF (NW50H1)
	MBB				
CLASSIC BATTERY CABINET	BB	MCCB	600AF		
BATTERY BREAKER CABINET	BB	ACB	4000AF		
BATTERY BREAKER BOX	BB	MCCB	600AF/1000AF 		



CURRENT DATA IN AMPS UPS1500KW (SKU# GVX1500K1500HS)			
	380V	400V	415V
NOMINAL INPUT (NO CHARGING)	2401	2279	2194
MAXIMUM INPUT CURRENT**	2657	2552	2457
NOMINAL OUTPUT CURRENT	2279	2165	2087
FULL LOAD BATTERY CURRENT (@ VMIN)	4092		
** NOMINAL INPUT VOLTAGE AND FULL CHARGE.			

#### LEGEND:

- AC CABLE (PROVIDED BY OTHERS)
- 500VDC CABLE (PROVIDED BY OTHERS)

#### NOTES:

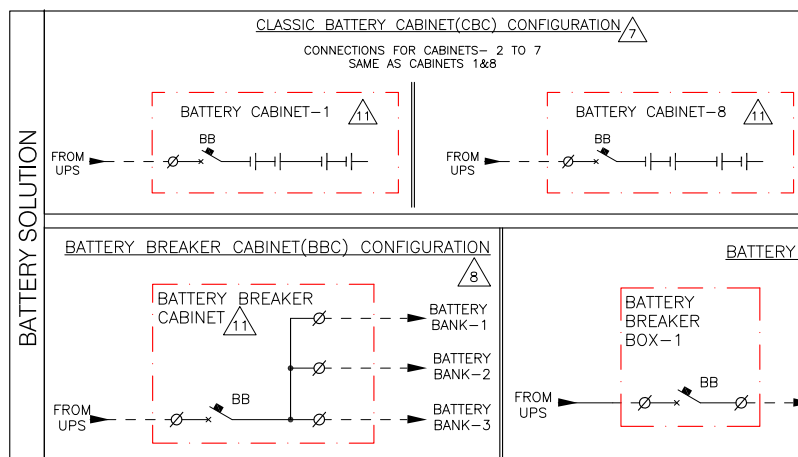
1. INSTALLATION SHALL COMPLY WITH ALL APPLICABLE NATIONAL, STATE AND LOCAL CODES.
2. REFER TO PRODUCT INSTALLATION DOCUMENTATION FOR SITE PREPARATIONS.
3. DRAWING DEPICTS POWER SYSTEM CONNECTIONS AND IS NOT REPRESENTATIVE OF PHYSICAL LAYOUT. REFER TO MECHANICAL DRAWINGS FOR EQUIPMENT LAYOUT.
4. FINAL SELECTIONS ARE RESPONSIBILITY OF ENGINEER OF RECORDS BASED ON INSTALLED CONDITIONS AND SCC/SELECTIVE CO-ORDINATION/ARC-FLASH ANALYSIS.
- Δ5. INPUT AC SOURCE TO BE 3 WIRE+PE OR 4 WIRE+PE. TN, TT AND IT POWER DISTRIBUTION SYSTEM WITH NO EARTHED LINE CONDUCTORS ARE SUPPORTED.
6. BACK FEED PROTECTION "BF2" BUILT INTO UPS MODULE.
- Δ7. CONFIGURATION APPLICABLE FOR 7 OR 8 NUMBER OF BATTERY STRINGS.
- Δ8. USE OF BBC IS MANDATORY IF NUMBER OF BATTERY STRINGS ARE 3 OR LESS.
- Δ9. CONFIGURATION APPLICABLE IF NUMBER OF BATTERY STRINGS ARE BETWEEN 4 AND 8. BATTERY BREAKER RATING (PER STRING) IS 1000A IF NUMBER OF BATTERY STRINGS ARE FROM 4 TO 6. BATTERY BREAKER RATING (PER STRING) IS 600A IF NUMBER OF BATTERY STRINGS ARE 7 OR 8.
- Δ10. SINGLE FEED KIT (OH-9161) IS PART OF UPS SKU AND MUST BE INSTALLED FOR THIS CONFIGURATION.
- Δ11. SKUs ARE ETO (ENGINEER TO ORDER) ITEMS.
- Δ12. MAXIMUM INPUT SHORT-CIRCUIT WITHSTAND:  $I_{cw}=100ka$  RMS SYMMETRICAL.
- Δ13. A READILY ACCESSIBLE BREAKER IS REQUIRED FOR UPSTREAM CURRENT PROTECTION. MAXIMUM FAULT CURRENT DISCONNECTION TIME: 46 SECONDS@200%  $I_n$ .

THIS DRAWING AND SPECIFICATIONS HEREIN ARE THE PROPERTY OF SCHNEIDER ELECTRIC AND SHALL NOT BE COPIED, REPRODUCED OR USED IN WHOLE OR IN PART, AS THE BASIS FOR THE MANUFACTURE OR SALE OF ITEMS WITHOUT WRITTEN PERMISSION FROM SCHNEIDER ELECTRIC. THIS DRAWING IS BASED UPON LATEST AVAILABLE INFORMATION AND IS SUBJECT TO CHANGE WITHOUT NOTICE.

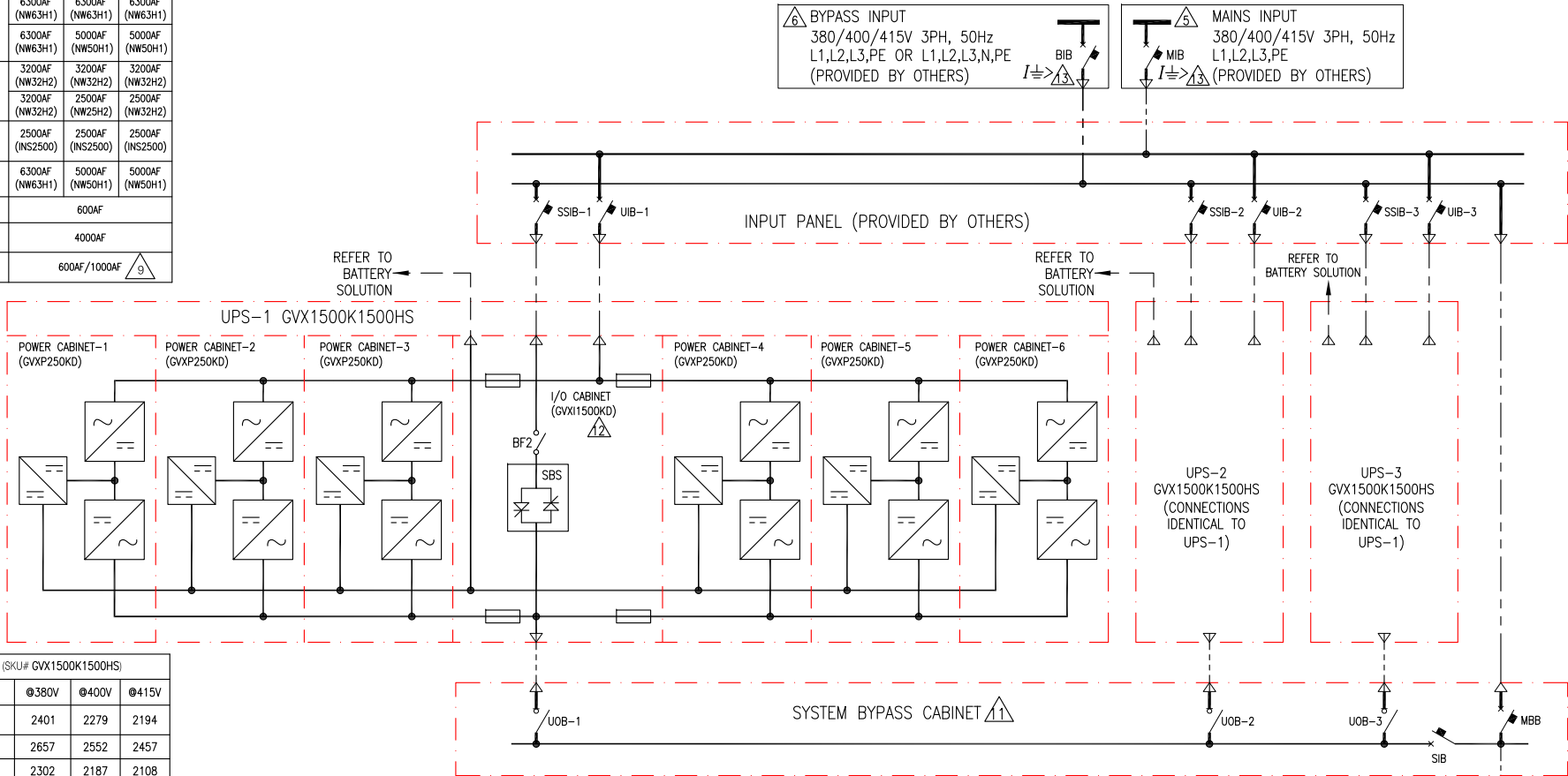
**Schneider Electric**

**TITLE:** GALAXY VX  
Input: 380/400/415V AC 3PH 50Hz SINGLE FEED  
Output: 380/400/415V AC 3PH 50Hz 3000kW  
1500kW 3 MOD N+1 UPS w BATT & SBC  
SYSTEM ONE LINE DIAGRAM  
**PROJECT:** DRAWINGS **SHEET** 1 OF 2

**DWG NO:** GVX1500K1500HBSBCR3-SD **REV.** 6  
**DRAWN BY:** BALA 30-MAY-18 **ANGLE**  
**ENGINEER:** S ANDERSEN 30-MAY-18 **PROJECTION**  
**APPROVED BY:** H N / D M / G S 30-MAY-18 **N . A**



DEVICE RATINGS (RECOMMENDED/PRESENT) (DEVICE MAKE-SCHNEIDER ELECTRIC)					
LOCATION	DEVICE ID	DEVICE	RATING		
			@380V	@400V	@415V
FEEDER	MB	ACB	6300AF (NW63H1)	6300AF (NW63H1)	6300AF (NW63H1)
	BIB		6300AF (NW63H1)	5000AF (NW50H1)	5000AF (NW50H1)
INPUT PANEL	UIB-1/2/3	MCCB	3200AF (NS2H2)	3200AF (NS2H2)	3200AF (NS2H2)
	SSIB-1/2/3		3200AF (NS2H2)	2500AF (NW25H2)	2500AF (NS2H2)
SYSTEM BYPASS PANEL	UOB-1/2/3	SWITCH DISCONNECT	2500AF (NS2500)	2500AF (NS2500)	2500AF (NS2500)
	SIB	ACB	6300AF (NW63H1)	5000AF (NW50H1)	5000AF (NW50H1)
	MBB				
CLASSIC BATTERY CABINET	BB	MCCB	600AF		
BATTERY BREAKER CABINET	BB	ACB	4000AF		
BATTERY BREAKER BOX	BB	MCCB	600AF/1000AF		
					<div>9</div>



CURRENT DATA IN AMPS UPS1500KW (SKU# GVX1500K1500HS)			
	@380V	@400V	@415V
NOMINAL INPUT (NO CHARGING)	2401	2279	2194
MAXIMUM INPUT CURRENT**	2657	2552	2457
NOMINAL BYPASS INPUT CURRENT	2302	2187	2108
NOMINAL OUTPUT CURRENT	2279	2165	2087
FULL LOAD BATTERY CURRENT (@ VMIN)	4092		
** NOMINAL INPUT VOLTAGE AND FULL CHARGE.			

LEGEND:	
—	AC CABLE (PROVIDED BY OTHERS)
- - -	500VDC CABLE (PROVIDED BY OTHERS)

- NOTES:**
1. INSTALLATION SHALL COMPLY WITH ALL APPLICABLE NATIONAL, STATE AND LOCAL CODES.
  2. REFER TO PRODUCT INSTALLATION DOCUMENTATION FOR SITE PREPARATIONS.
  3. DRAWING DEPICTS POWER SYSTEM CONNECTIONS AND IS NOT REPRESENTATIVE OF PHYSICAL LAYOUT. REFER TO MECHANICAL DRAWINGS FOR EQUIPMENT LAYOUT.
  4. FINAL SELECTIONS ARE RESPONSIBILITY OF ENGINEER OF RECORDS BASED ON INSTALLED CONDITIONS AND SCC/SELECTIVE CO-ORDINATION/ARC-FLASH ANALYSIS.
- △5. INPUT AC SOURCE TO BE 3 WIRE+PE. TN, TT AND IT POWER DISTRIBUTION SYSTEM WITH NO EARTHED LINE CONDUCTORS ARE SUPPORTED.
- △6. BYPASS INPUT TO BE 3 WIRE+PE OR 4 WIRE+PE. TN, TT AND IT POWER DISTRIBUTION SYSTEM WITH NO EARTHED LINE CONDUCTORS ARE SUPPORTED.
- △7. CONFIGURATION APPLICABLE FOR 7 OR 8 NUMBER OF BATTERY STRINGS..
- △8. USE OF BBC IS MANDATORY IF NUMBER OF BATTERY STRINGS ARE 3 OR LESS.
- △9. CONFIGURATION APPLICABLE IF NUMBER OF BATTERY STRINGS ARE BETWEEN 4 AND 8. BATTERY BREAKER RATING (PER STRING) IS 1000A IF NUMBER OF BATTERY STRINGS ARE FROM 4 TO 6. BATTERY BREAKER RATING (PER STRING) IS 600A IF NUMBER OF BATTERY STRINGS ARE 7 OR 8.
10. BACK FEED PROTECTION "BF2" BUILT INTO UPS MODULE.
- △11. SKUs ARE ETO (ENGINEER TO ORDER) ITEMS.
- △12. MAXIMUM INPUT SHORT-CIRCUIT WITHSTAND: Icw=100kA RMS SYMMETRICAL.
- △13. A READILY ACCESSIBLE BREAKER IS REQUIRED FOR UPSTREAM CURRENT PROTECTION.
- MAXIMUM FAULT CURRENT DISCONNECTION TIME: 46 SECONDS@200% In.

THIS DRAWING AND SPECIFICATIONS HEREIN ARE THE PROPERTY OF SCHNEIDER ELECTRIC AND SHALL NOT BE COPIED, REPRODUCED OR USED IN WHOLE OR IN PART, AS THE BASIS FOR THE MANUFACTURE OR SALE OF ITEMS WITHOUT WRITTEN PERMISSION FROM SCHNEIDER ELECTRIC. THIS DRAWING IS BASED UPON LATEST AVAILABLE INFORMATION AND IS SUBJECT TO CHANGE WITHOUT NOTICE.



**TITLE:** GALAXY VX  
Input: 380/400/415V AC 3PH 50Hz DUAL FEED  
Output: 380/400/415V AC 3PH 50Hz 3000kW  
1500kW 3 MOD N+1 UPS w BATT & SBC  
SYSTEM ONE LINE DIAGRAM

**PROJECT:** DRAWINGS **SHEET** 2 OF 2

<b>DWG NO:</b> GVX1500K1500HBSBCR3-SD	<b>REV.</b> 6
<b>DRAWN BY:</b> BALA	30-MAY-18
<b>ENGINEER:</b> S ANDERSEN	30-MAY-18
<b>APPROVED BY:</b> H N / D M / G S	30-MAY-18
	ANGLE PROJECTION
	N. A