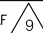



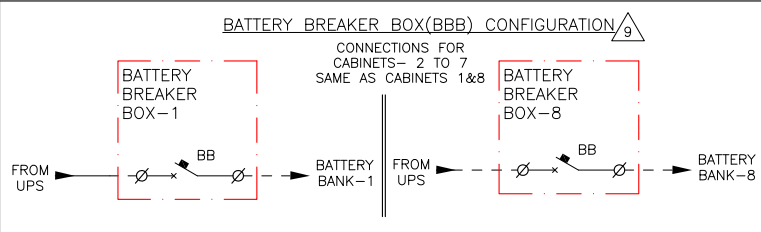
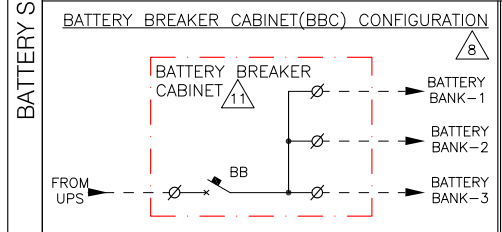
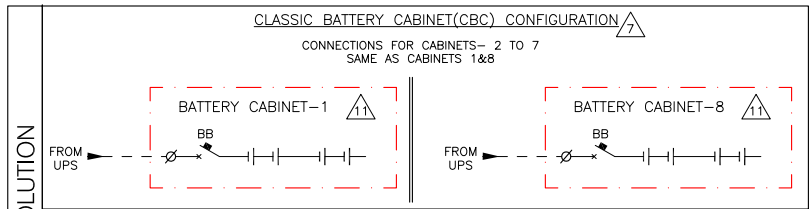
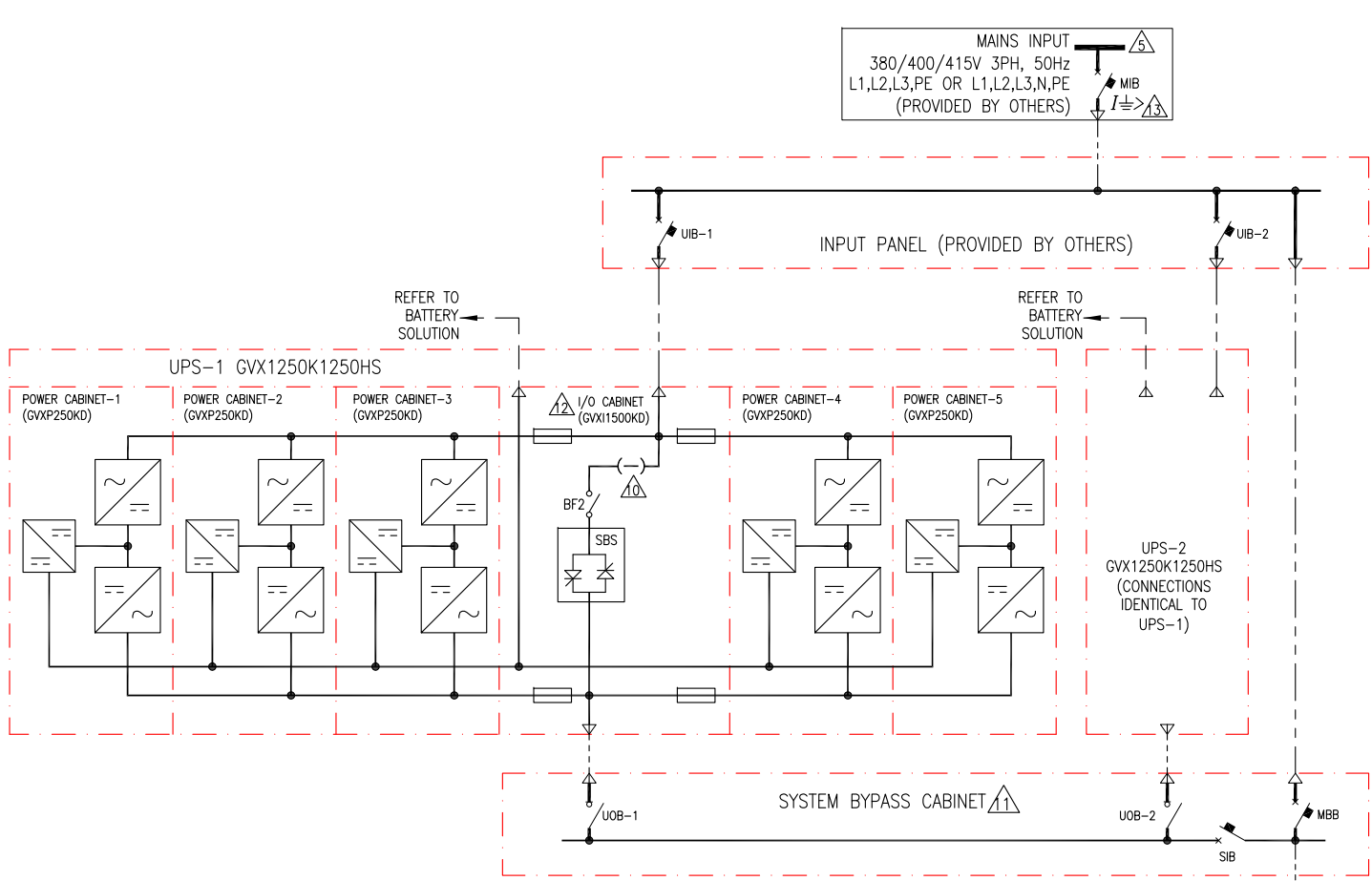
| DEVICE RATINGS (RECOMMENDED/PRESENT) (DEVICE MAKE-SCHNEIDER ELECTRIC) | | | | | |
|---|-----------|----------------------|--|---------------------|---------------------|
| LOCATION | DEVICE ID | DEVICE | RATING | | |
| | | | @380V | @400V | @415V |
| FEEDER | MB | ACB | 5000AF (NW50H1) | 5000AF (NW50H1) | 5000AF (NW50H1) |
| INPUT PANEL | UIB-1/2 | MCCB | 2500AF (NW25H2) | 2500AF (NW25H2) | 2500AF (NW25H2) |
| SYSTEM BYPASS PANEL | UOB-1/2 | SWITCH DISCONNECT | 2000AF (INS2000) | 2000AF (INS2000) | 2000AF (INS2000) |
| | SIB | ACB | 5000AF (NW50H1) | 5000AF (NW50H1) | 4000AF (NW40HF) |
| | MBB | | | | |
| CLASSIC BATTERY CABINET | BB | MCCB | 600AF | | |
| BATTERY BREAKER CABINET | BB | ACB | 4000AF | | |
| BATTERY BREAKER BOX | BB | MCCB | 600AF/1000AF  | | |

| CURRENT DATA IN AMPS UPS1250KW (SKU# GVX1250K1250HS) | | | |
|--|-------|-------|-------|
| | @380V | @400V | @415V |
| NOMINAL INPUT (NO CHARGING) | 2001 | 1899 | 1828 |
| MAXIMUM INPUT CURRENT** | 2214 | 2127 | 2048 |
| NOMINAL OUTPUT CURRENT | 1899 | 1804 | 1739 |
| FULL LOAD BATTERY CURRENT (@ VMIN) | 3410 | | |
| ** NOMINAL INPUT VOLTAGE AND FULL CHARGE. | | | |

| LEGEND: | |
|---|-----------------------------------|
|  | AC CABLE (PROVIDED BY OTHERS) |
|  | 500VDC CABLE (PROVIDED BY OTHERS) |

NOTES:

1. INSTALLATION SHALL COMPLY WITH ALL APPLICABLE NATIONAL, STATE AND LOCAL CODES.
2. REFER TO PRODUCT INSTALLATION DOCUMENTATION FOR SITE PREPARATIONS.
3. DRAWING DEPICTS POWER SYSTEM CONNECTIONS AND IS NOT REPRESENTATIVE OF PHYSICAL LAYOUT. REFER TO MECHANICAL DRAWINGS FOR EQUIPMENT LAYOUT.
4. FINAL SELECTIONS ARE RESPONSIBILITY OF ENGINEER OF RECORDS BASED ON INSTALLED CONDITIONS AND SCC/SELECTIVE CO-ORDINATION/ARC-FLASH ANALYSIS.
- △5. INPUT AC SOURCE TO BE 3 WIRE+PE OR 4 WIRE+PE. TN, TT AND IT POWER DISTRIBUTION SYSTEM WITH NO EARTHED LINE CONDUCTORS ARE SUPPORTED.
6. BACK FEED PROTECTION "BF2" BUILT INTO UPS MODULE.
- △7. CONFIGURATION APPLICABLE FOR 6, 7 OR 8 NUMBER OF BATTERY STRINGS.
- △8. USE OF BBC IS MANDATORY IF NUMBER OF BATTERY STRINGS ARE 3 OR LESS.
- △9. CONFIGURATION APPLICABLE IF NUMBER OF BATTERY STRINGS ARE BETWEEN 4 AND 8. BATTERY BREAKER RATING (PER STRING) IS 1000A IF NUMBER OF BATTERY STRINGS ARE FROM 4 OR 5. BATTERY BREAKER RATING (PER STRING) IS 600A IF NUMBER OF BATTERY STRINGS ARE 6, 7 OR 8.
- △10. SINGLE FEED KIT (0H-9161) IS PART OF UPS SKU AND MUST BE INSTALLED FOR THIS CONFIGURATION.
- △11. SKUs ARE ETO (ENGINEER TO ORDER) ITEMS.
- △12. MAXIMUM INPUT SHORT-CIRCUIT WITHSTAND: Icw=100kA RMS SYMMETRICAL.
- △13. A READILY ACCESSIBLE BREAKER IS REQUIRED FOR UPSTREAM CURRENT PROTECTION. MAXIMUM FAULT CURRENT DISCONNECTION TIME: 46 SECONDS@200% In.

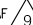


THIS DRAWING AND SPECIFICATIONS HEREIN ARE THE PROPERTY OF SCHNEIDER ELECTRIC AND SHALL NOT BE COPIED, REPRODUCED OR USED IN WHOLE OR IN PART, AS THE BASIS FOR THE MANUFACTURE OR SALE OF ITEMS WITHOUT WRITTEN PERMISSION FROM SCHNEIDER ELECTRIC. THIS DRAWING IS BASED UPON LATEST AVAILABLE INFORMATION AND IS SUBJECT TO CHANGE WITHOUT NOTICE.


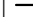


TITLE: GALAXY VX
Input: 380/400/415V AC 3PH 50Hz SINGLE FEED
Output: 380/400/415V AC 3PH 50Hz 2500kW
1250kW UPS 2 MOD CAPACITY w BATT&SBC
SYSTEM ONE LINE DIAGRAM
PROJECT: DRAWINGS SHEET 1 OF 2

DWG NO: GVX1250K1250HBSBCC2-SD
DRAWN BY: BALA 30-MAY-18
ENGINEER: S ANDERSEN 30-MAY-18
APPROVED BY: H N / D M / G S 30-MAY-18
REV. 7
ANGLE
PROJECTION
N.A.

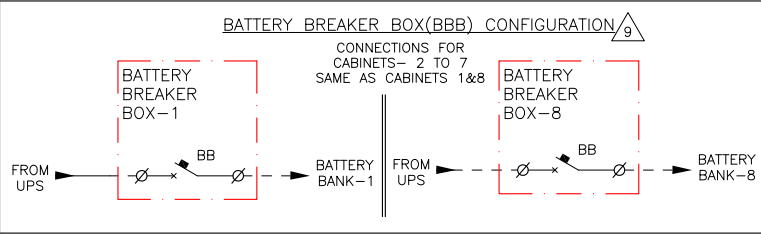
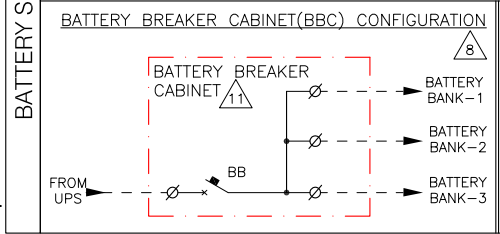
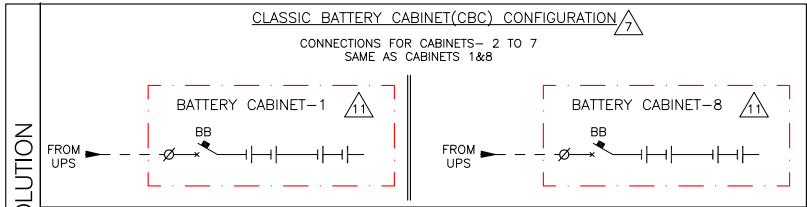
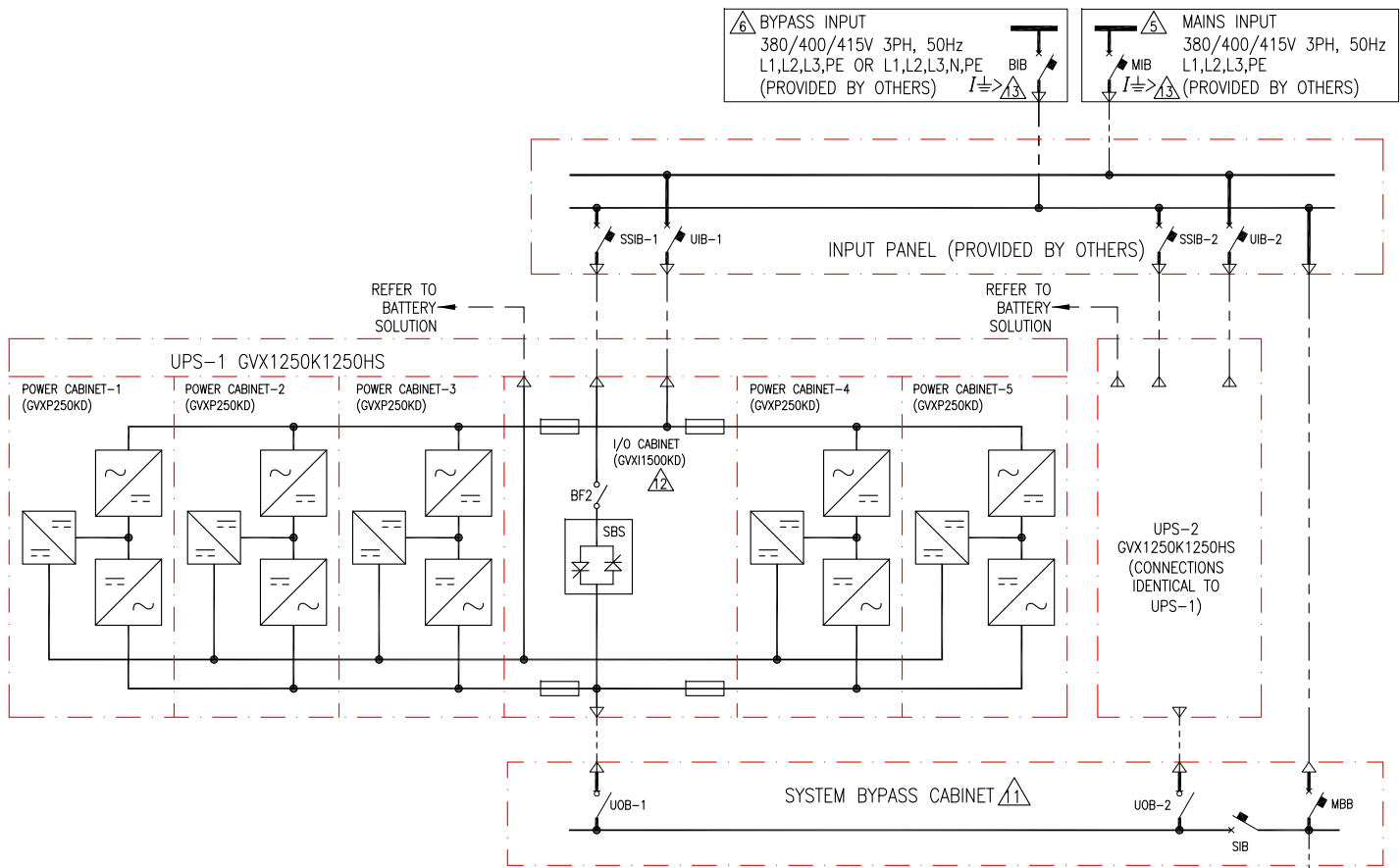
| DEVICE RATINGS (RECOMMENDED/PRESENT) (DEVICE MAKE-SCHNEIDER ELECTRIC) | | | | | |
|---|-----------|-------------------|--|------------------|------------------|
| LOCATION | DEVICE ID | DEVICE | RATING | | |
| | | | @380V | @400V | @415V |
| FEEDER | MIB | ACB | 5000AF (NW50H1) | 5000AF (NW50H1) | 5000AF (NW50H1) |
| | BIB | | 5000AF (NW50H1) | 5000AF (NW50H1) | 4000AF (NW40BH1) |
| INPUT PANEL | UIB-1/2 | MCCB | 2500AF (NW25H2) | 2500AF (NW25H2) | 2500AF (NW25H2) |
| | SSIB-1/2 | | 2500AF (NW25H2) | 2500AF (NW25H2) | 2000AF (NW20H2) |
| SYSTEM BYPASS PANEL | UOB-1/2 | SWITCH DISCONNECT | 2000AF (INS2000) | 2000AF (INS2000) | 2000AF (INS2000) |
| | SIB | ACB | 5000AF (NW50H1) | 5000AF (NW50H1) | 4000AF (NW40HF) |
| | MBB | | | | |
| CLASSIC BATTERY CABINET | BB | MCCB | 600AF | | |
| BATTERY BREAKER CABINET | BB | ACB | 4000AF | | |
| BATTERY BREAKER BOX | BB | MCCB | 600AF/1000AF  | | |

| CURRENT DATA IN AMPS UPS1250KW (SKU# GVX1250K1250HS) | | | |
|--|-------|-------|-------|
| | @380V | @400V | @415V |
| NOMINAL INPUT (NO CHARGING) | 2001 | 1899 | 1828 |
| MAXIMUM INPUT CURRENT** | 2214 | 2127 | 2048 |
| NOMINAL BYPASS INPUT CURRENT | 1918 | 1822 | 1757 |
| NOMINAL OUTPUT CURRENT | 1899 | 1804 | 1739 |
| FULL LOAD BATTERY CURRENT (@ VMIN) | 3410 | | |
| ** NOMINAL INPUT VOLTAGE AND FULL CHARGE. | | | |

| LEGEND: | |
|---|-----------------------------------|
|  | AC CABLE (PROVIDED BY OTHERS) |
|  | 500VDC CABLE (PROVIDED BY OTHERS) |

NOTES:

- INSTALLATION SHALL COMPLY WITH ALL APPLICABLE NATIONAL, STATE AND LOCAL CODES.
- REFER TO PRODUCT INSTALLATION DOCUMENTATION FOR SITE PREPARATIONS.
- DRAWING DEPICTS POWER SYSTEM CONNECTIONS AND IS NOT REPRESENTATIVE OF PHYSICAL LAYOUT. REFER TO MECHANICAL DRAWINGS FOR EQUIPMENT LAYOUT.
- FINAL SELECTIONS ARE RESPONSIBILITY OF ENGINEER OF RECORDS BASED ON INSTALLED CONDITIONS AND SCC/SELECTIVE CO-ORDINATION/ARC-FLASH ANALYSIS.
- INPUT AC SOURCE TO BE 3 WIRE+PE. TN, TT AND IT POWER DISTRIBUTION SYSTEM WITH NO EARTHED LINE CONDUCTORS ARE SUPPORTED.
- BYPASS INPUT TO BE 3 WIRE+PE OR 4 WIRE+PE. TN, TT AND IT POWER DISTRIBUTION SYSTEM WITH NO EARTHED LINE CONDUCTORS ARE SUPPORTED.
- CONFIGURATION APPLICABLE FOR 6, 7 OR 8 NUMBER OF BATTERY STRINGS..
- USE OF BBC IS MANDATORY IF NUMBER OF BATTERY STRINGS ARE 3 OR LESS.
- CONFIGURATION APPLICABLE IF NUMBER OF BATTERY STRINGS ARE BETWEEN 4 AND 8. BATTERY BREAKER RATING (PER STRING) IS 1000A IF NUMBER OF BATTERY STRINGS ARE FROM 4 OR 5. BATTERY BREAKER RATING (PER STRING) IS 600A IF NUMBER OF BATTERY STRINGS ARE 6, 7 OR 8.
- BACK FEED PROTECTION "BF2" BUILT INTO UPS MODULE.
- SKUs ARE ETO (ENGINEER TO ORDER) ITEMS.
- MAXIMUM INPUT SHORT-CIRCUIT WITHSTAND: I_{cw}=100kA RMS SYMMETRICAL.
- A READILY ACCESSIBLE BREAKER IS REQUIRED FOR UPSTREAM CURRENT PROTECTION. MAXIMUM FAULT CURRENT DISCONNECTION TIME: 46 SECONDS@200% In.



THIS DRAWING AND SPECIFICATIONS HEREIN ARE THE PROPERTY OF SCHNEIDER ELECTRIC AND SHALL NOT BE COPIED, REPRODUCED OR USED IN WHOLE OR IN PART, AS THE BASIS FOR THE MANUFACTURE OR SALE OF ITEMS WITHOUT WRITTEN PERMISSION FROM SCHNEIDER ELECTRIC. THIS DRAWING IS BASED UPON LATEST AVAILABLE INFORMATION AND IS SUBJECT TO CHANGE WITHOUT NOTICE.

Schneider Electric

TITLE: GALAXY VX
Input: 380/400/415V AC 3PH 50Hz DUAL FEED
Output: 380/400/415V AC 3PH 50Hz 2500kW
1250kW UPS 2 MOD CAPACITY w BATT&SBC
SYSTEM ONE LINE DIAGRAM
PROJECT: DRAWINGS SHEET 2 OF 2

DWG NO: GVX1250K1250HBSBCC2-SD
DRAWN BY: BALA 30-MAY-18
ENGINEER: S ANDERSEN 30-MAY-18
APPROVED BY: H N / D M / G S 30-MAY-18
REV. 7
ANGLE
PROJECTION
N. A