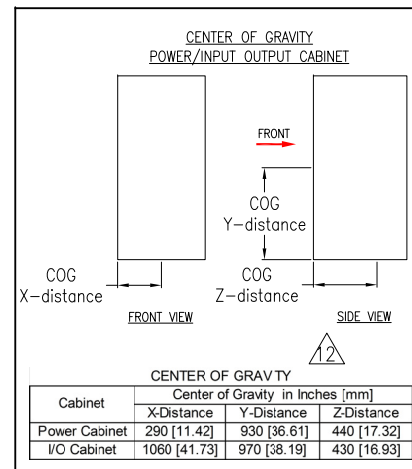


- NOTES:**
1. INSTALLATION SHALL COMPLY WITH ALL APPLICABLE NATIONAL, STATE AND LOCAL ELECTRICAL REGULATIONS.
 2. REFER TO PRODUCT DOCUMENTATION FOR ADDITIONAL DETAILS PRIOR TO INSTALLATION AND SITE PREPARATION WORK.
 3. ALL DIMENSIONS ARE IN MILLIMETERS [INCHES].
 - △ 4. FRONT ACCESS REQUIRED FOR SERVICE. MINIMUM REQUIRED FRONT CLEARANCE IS 1020 [40.20]. REAR OR SIDE ACCESS NOT REQUIRED.
 5. INPUT POWER CABLE ENTRY IS FROM TOP OR BOTTOM OF THE UNIT I/O CABINET ONLY.
 6. FOR WEIGHT OF THE UNIT REFER TO THE TABLE-1.
 7. PROTECTION CLASS: IP20.
 8. OPERATING TEMPERATURE: 0°C TO 40°C [32°F TO 104°F].
 9. DOOR SWING-ROTATES FREELY 180°.
 10. COLOR: RAL 9003 WHITE.
 - △ 11. TO BE FOLLOWED STRICTLY.
 - △ 12. THIS INFORMATION PROVIDES APPROXIMATE CENTER OF GRAVITY CALCULATION.



Heat Dissipation at 100% load and fully charged	UPS RATING		
	1000kW	1250kW	1500kW
BTU/hr @380V	187156	224474	269388
BTU/hr @400V	179579	215042	258050
BTU/hr @415V	179579	215042	258050

UPS Rating in kW	SKU NUMBER	APPLICABLE NUMBER OF CABINETS		WEIGHT OF SKUs (kg[lbs]) (I/O CABINET-UNIT WEIGHT: 876 [1931] , POWER CABINET-UNIT WEIGHT: 540 [1190])
		I/O CABINET	No. of POWER CABINET WITH REF TO I-O CABINET (LEFT+RIGHT)	
1000	GVX1000K1250HS GVX1000K1500HS	1	3+1	3036 [6693]
1250	GVX1250K1250HS GVX1250K1500HS		3+2	3576 [7884]
1500	GVX1500K1500HS		3+3	4116 [9074]
	GVX1750K1500HS		3+4	4656 [10265]

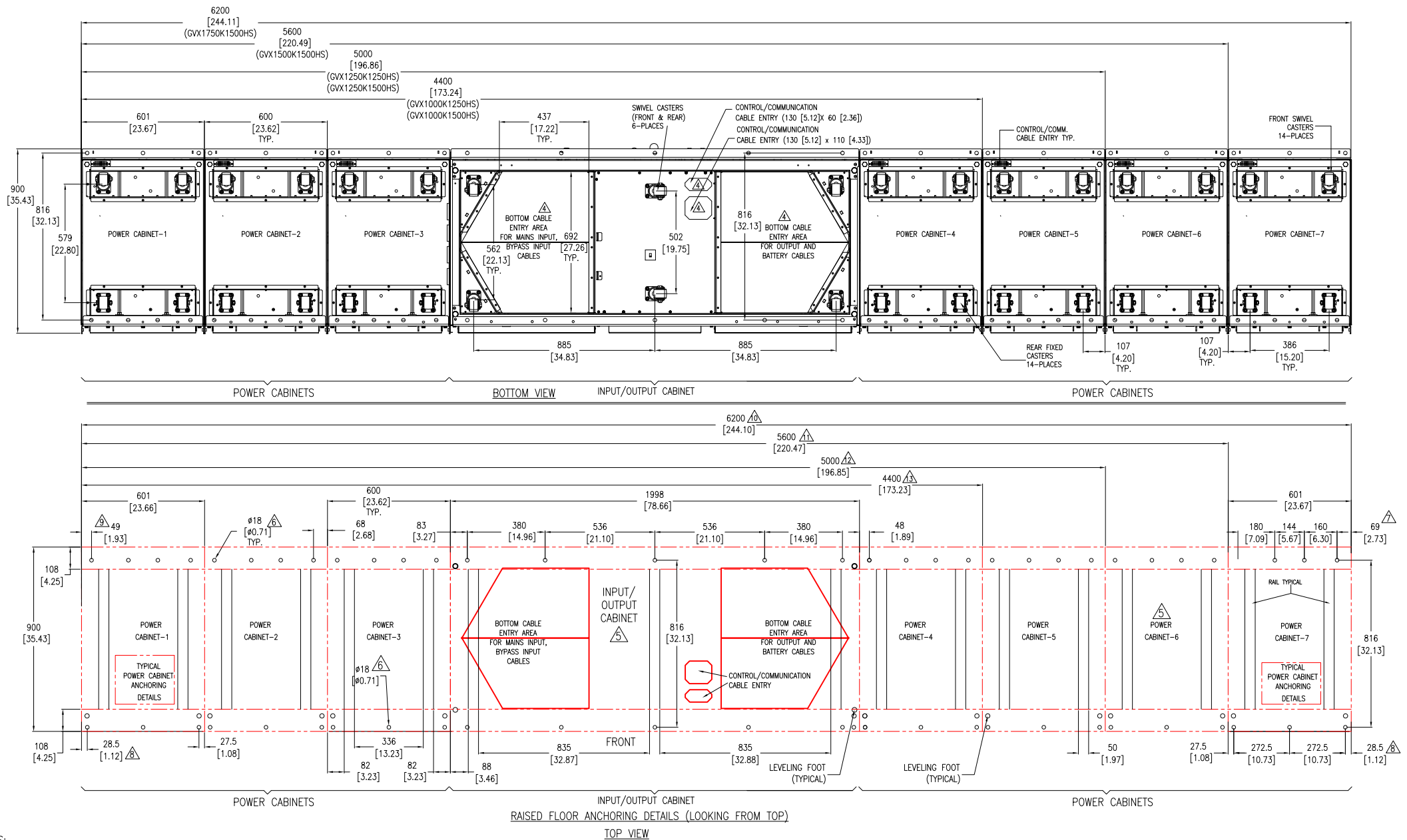
THIS DRAWING AND SPECIFICATIONS HEREIN ARE THE PROPERTY OF SCHNEIDER ELECTRIC AND SHALL NOT BE COPIED, REPRODUCED OR USED IN WHOLE OR IN PART, AS THE BASIS FOR THE MANUFACTURE OR SALE OF ITEMS WITHOUT WRITTEN PERMISSION FROM SCHNEIDER ELECTRIC. THIS DRAWING IS BASED UPON LATEST AVAILABLE INFORMATION AND IS SUBJECT TO CHANGE WITHOUT NOTICE.

Schneider Electric

TITLE: Galaxy VX SINGLE/PARALLEL UPS 1000 / 1250 / 1500kW
Input: 380/400/415V, 3PH, 50Hz, SINGLE/DUAL MAINS
Output: 380/400/415V, 3PH, 50Hz
GENERAL ARRANGEMENT

PROJECT: SUBMITTAL DRAWINGS **SHEET 1 OF 6**

DWG NO: GVX1000K1500HS **REV.** 3
DRAWN: BALA **22-OCT-18**
ENGINEER: L RASMUSSEN **22-OCT-18**
APPROVED: G S/H N/A H **22-OCT-18**
FIRST ANGLE PROJECTION



NOTES:

1. INSTALLATION SHALL COMPLY WITH ALL APPLICABLE NATIONAL, STATE AND LOCAL ELECTRICAL REGULATIONS.
 2. REFER TO PRODUCT DOCUMENTATION FOR ADDITIONAL DETAILS PRIOR TO INSTALLATION AND SITE PREPARATION WORK.
 3. ALL DIMENSIONS ARE IN MILLIMETERS [INCHES].
 - △4. DRILL/PUNCH HOLES IN PLATE AS PER DESCRIPTION GUIDELINES SHOWN. REMOVE PLATE FROM CABINET BEFORE DRILLING/PUNCHING.
 - △5. FOR WEIGHT DATA REFER TO SHEET-1.
 - △6. UPS BEEN SEISMIC TESTED WITH M12 BOLTS.
- | | WITH SIDE COVERS | WITHOUT SIDE COVERS |
|-----|------------------|---------------------|
| △7. | 69[2.72] | 68[2.68] |
| △8. | 28.5[1.12] | 27.5[1.08] |
| △9. | 49[1.93] | 48[1.89] |

NOTES:

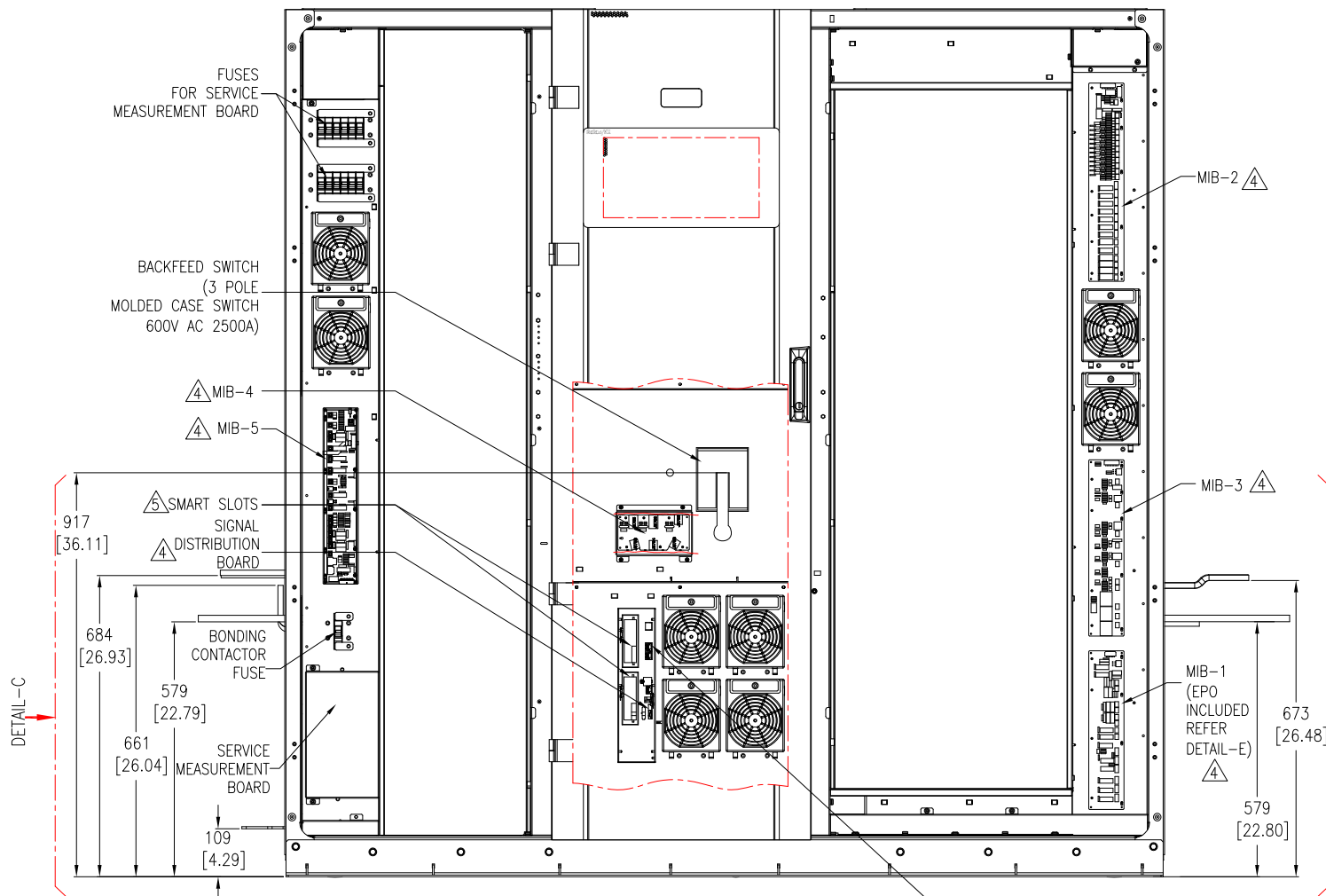
	WITH SIDE COVERS	WITHOUT SIDE COVERS
△10.	6200[244.09]	6198[244.02]
△11.	5600[220.47]	5598[220.39]
△12.	5000[196.85]	4998[196.77]
△13.	4400[173.23]	4398[173.15]

THIS DRAWING AND SPECIFICATIONS HEREIN ARE THE PROPERTY OF SCHNEIDER ELECTRIC AND SHALL NOT BE COPIED, REPRODUCED OR USED IN WHOLE OR IN PART, AS THE BASIS FOR THE MANUFACTURE OR SALE OF ITEMS WITHOUT WRITTEN PERMISSION FROM SCHNEIDER ELECTRIC. THIS DRAWING IS BASED UPON LATEST AVAILABLE INFORMATION AND IS SUBJECT TO CHANGE WITHOUT NOTICE.

Schneider Electric

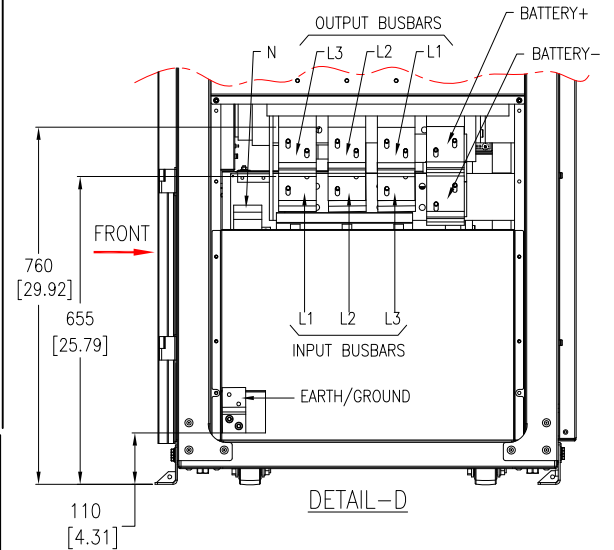
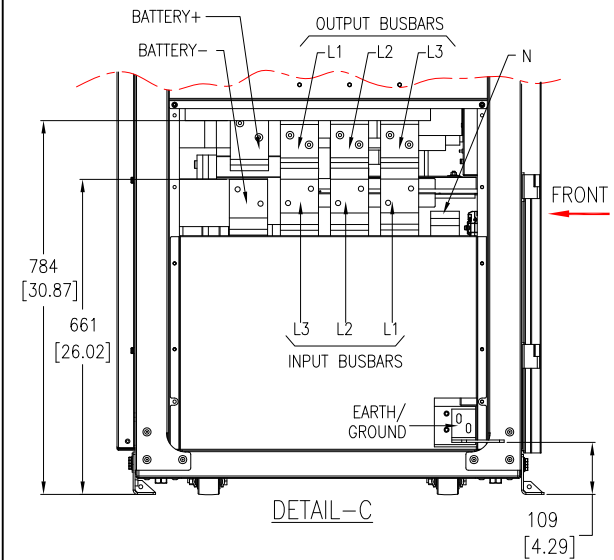
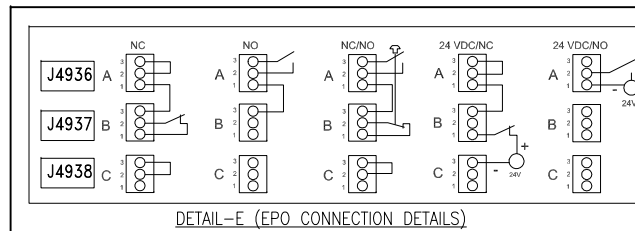
TITLE: Galaxy VX SINGLE/PARALLEL UPS 1000 / 1250 / 1500kW
Input: 380/400/415V, 3PH, 50Hz, SINGLE/DUAL MAINS
Output: 380/400/415V, 3PH, 50Hz
PROJECT: SUBMITTAL DRAWINGS **SHEET 3 OF 6**

DWG NO: GVX1000K1500HS **REV.** 4
DRAWN: BALA **12-APR-18**
ENGINEER: L RASMUSSEN **12-APR-18**
APPROVED: G S / H N/J V **12-APR-18**
FIRST ANGLE PROJECTION



FRONT VIEW (INPUT-OUTPUT CABINET)
(PANEL DOOR/S PARTIALLY/FULLY REMOVED)

MAIN CONTROLLER INTERFACE BOARD (MCIB)



NOTES:

1. INSTALLATION SHALL COMPLY WITH ALL APPLICABLE NATIONAL, STATE AND LOCAL ELECTRICAL REGULATIONS.
2. REFER TO PRODUCT DOCUMENTATION FOR ADDITIONAL DETAILS PRIOR TO INSTALLATION AND SITE PREPARATION WORK.
3. ALL DIMENSIONS ARE IN MILLIMETERS [INCHES].
- △ 4. REFER TO UPS INSTALLATION MANUAL/SYSTEM WIRING DIAGRAM (GVX1000K1500HS-WD) FOR INTERFACE BOARD DETAILS.
- △ 5. TWO SMART SLOTS FOR OPTIONAL NETWORK MANAGEMENT CARDS (SKU# AP9630/AP9631/AP9635CH).
6. SOME STRUCTURAL DETAILS HAVE BEEN OMITTED FOR CLARITY.

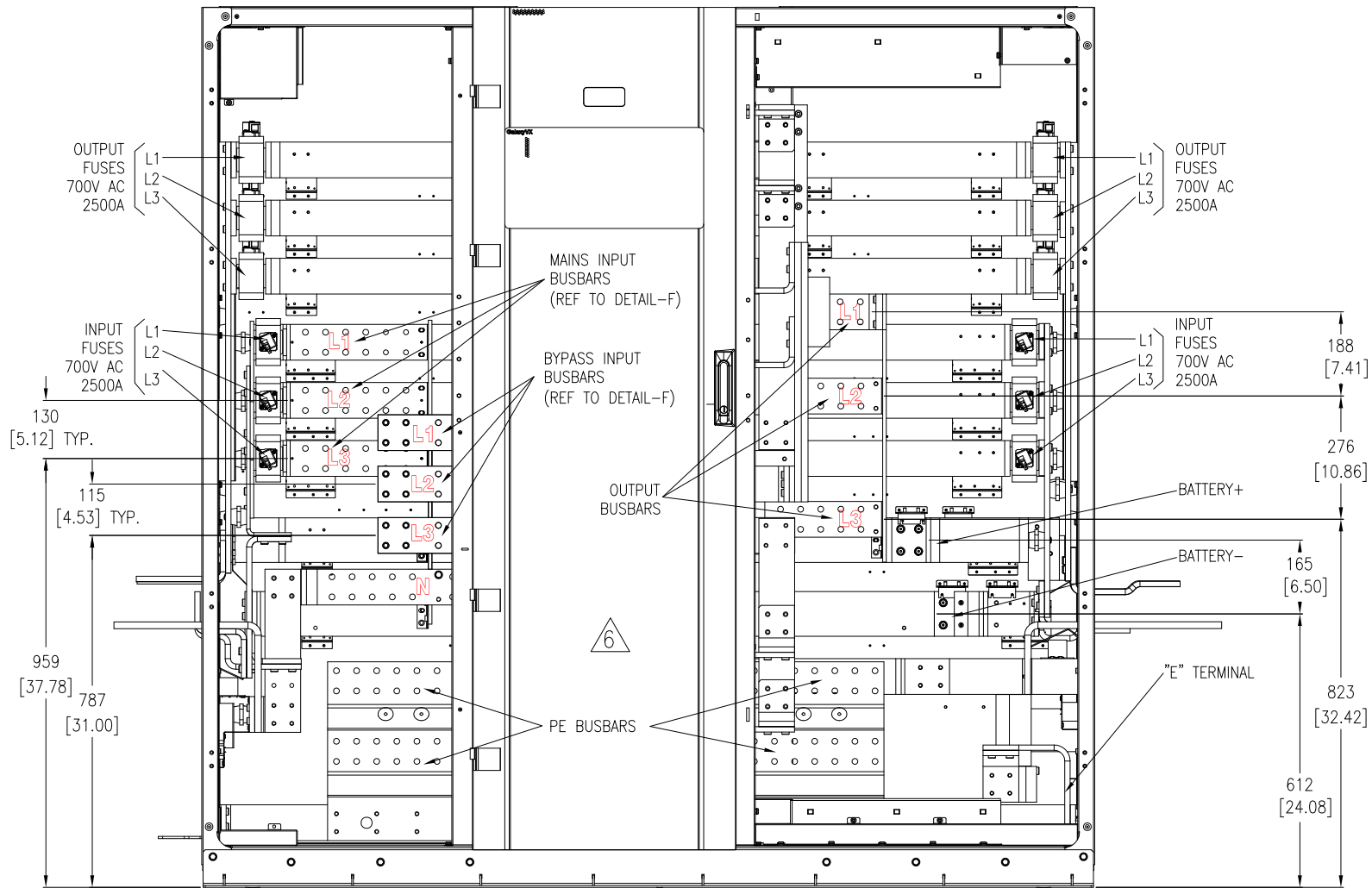
THIS DRAWING AND SPECIFICATIONS HEREIN ARE THE PROPERTY OF SCHNEIDER ELECTRIC AND SHALL NOT BE COPIED, REPRODUCED OR USED IN WHOLE OR IN PART, AS THE BASIS FOR THE MANUFACTURE OR SALE OF ITEMS WITHOUT WRITTEN PERMISSION FROM SCHNEIDER ELECTRIC. THIS DRAWING IS BASED UPON LATEST AVAILABLE INFORMATION AND IS SUBJECT TO CHANGE WITHOUT NOTICE.

Schneider Electric

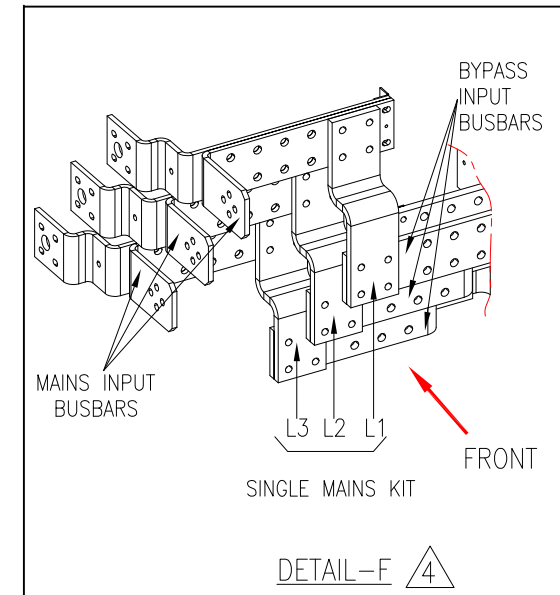
TITLE: Galaxy VX SINGLE/PARALLEL UPS 1000 / 1250 / 1500kW
Input: 380/400/415V, 3PH, 50Hz, SINGLE/DUAL MAINS
Output: 380/400/415V, 3PH, 50Hz
INPUT-OUTPUT CABINET-INTERNAL DETAILS
PROJECT: SUBMITTAL DRAWINGS SHEET 4 OF 6

DWG NO: GVX1000K1500HS
DRAWN: BALA
ENGINEER: L RASMUSSEN
APPROVED: G S / H N

REV. 1
16-DEC-16
16-DEC-16
16-DEC-16
FIRST ANGLE PROJECTION



FRONT VIEW (INPUT-OUTPUT CABINET)
(PANEL DOOR PARTIALLY REMOVED)



- NOTES:
1. INSTALLATION SHALL COMPLY WITH ALL APPLICABLE NATIONAL, STATE AND LOCAL ELECTRICAL REGULATIONS.
 2. REFER TO PRODUCT DOCUMENTATION FOR ADDITIONAL DETAILS PRIOR TO INSTALLATION AND SITE PREPARATION WORK.
 3. ALL DIMENSIONS ARE IN MILLIMETERS [INCHES].
 - △4. SINGLE MAINS KIT (KIT# 0H-9161) IS PART OF UPS, MUST BE INSTALLED FOR SINGLE MAINS CONFIGURATION ONLY.
 5. SOME STRUCTURAL DETAILS HAVE BEEN OMITTED FOR CLARITY.
 - △6. FOR TN-C AND IT SYSTEM CONNECTIONS/INSTALLATION REFER TO INSTALLATION MANUAL.

THIS DRAWING AND SPECIFICATIONS HEREIN ARE THE PROPERTY OF SCHNEIDER ELECTRIC AND SHALL NOT BE COPIED, REPRODUCED OR USED IN WHOLE OR IN PART, AS THE BASIS FOR THE MANUFACTURE OR SALE OF ITEMS WITHOUT WRITTEN PERMISSION FROM SCHNEIDER ELECTRIC. THIS DRAWING IS BASED UPON LATEST AVAILABLE INFORMATION AND IS SUBJECT TO CHANGE WITHOUT NOTICE.

Schneider Electric

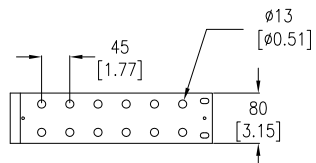
TITLE: Galaxy VX SINGLE/PARALLEL
UPS 1000 / 1250 / 1500kW
Input: 380/400/415V, 3PH, 50Hz, SINGLE/DUAL MAINS
Output: 380/400/415V, 3PH, 50Hz
INPUT-OUTPUT CABINET-BUSBAR DETAILS

DWG NO: GVX1000K1500HS
DRAWN: BALA
ENGINEER: L RASMUSSEN
APPROVED: G S / H N

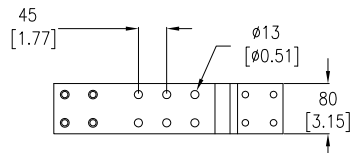
REV. 2
12-ARP-18
12-APR-18
12-APR-18
FIRST ANGLE PROJECTION

UPS EXTERNAL INTERFACE BUSBAR TYPICAL DETAILS

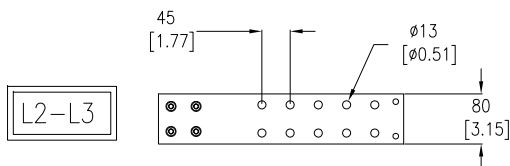
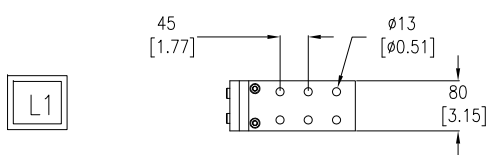
INPUT BUSBARS (8MM THICK-2 IN PARALLEL)



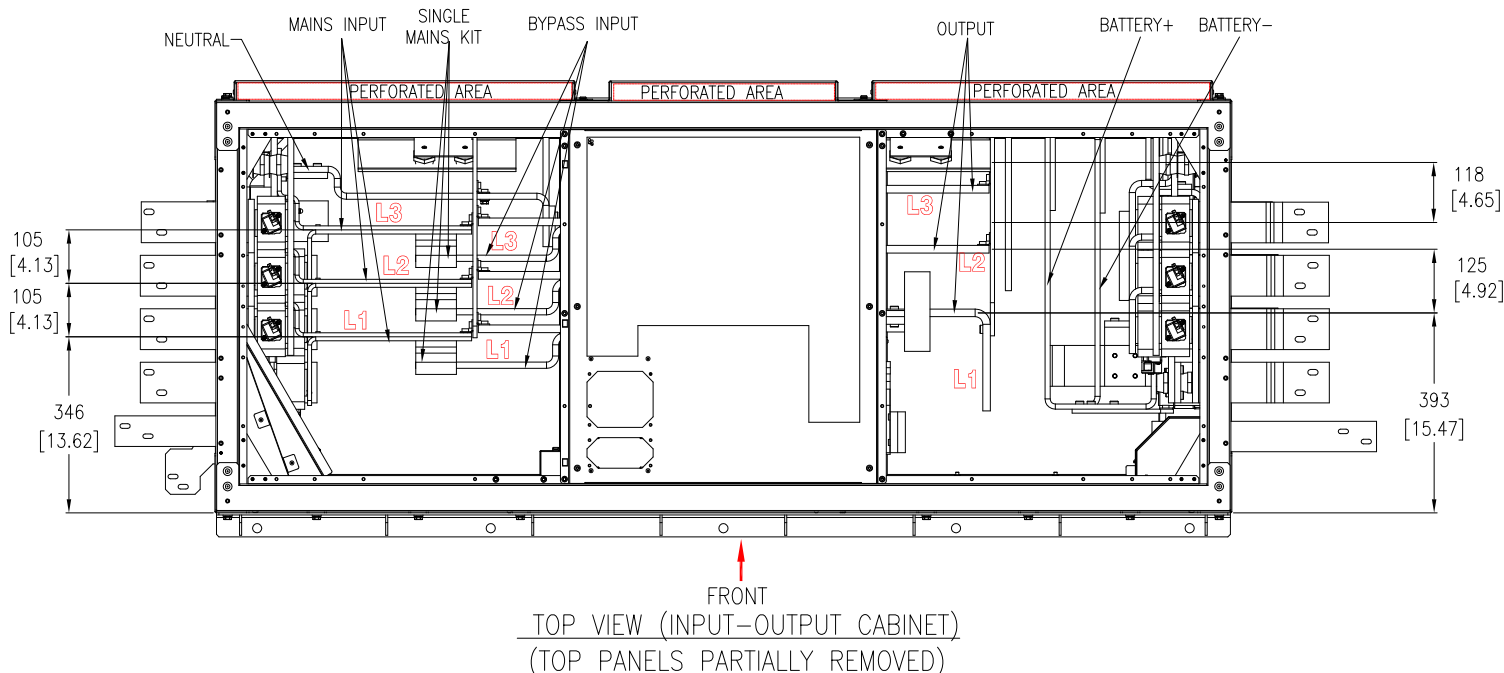
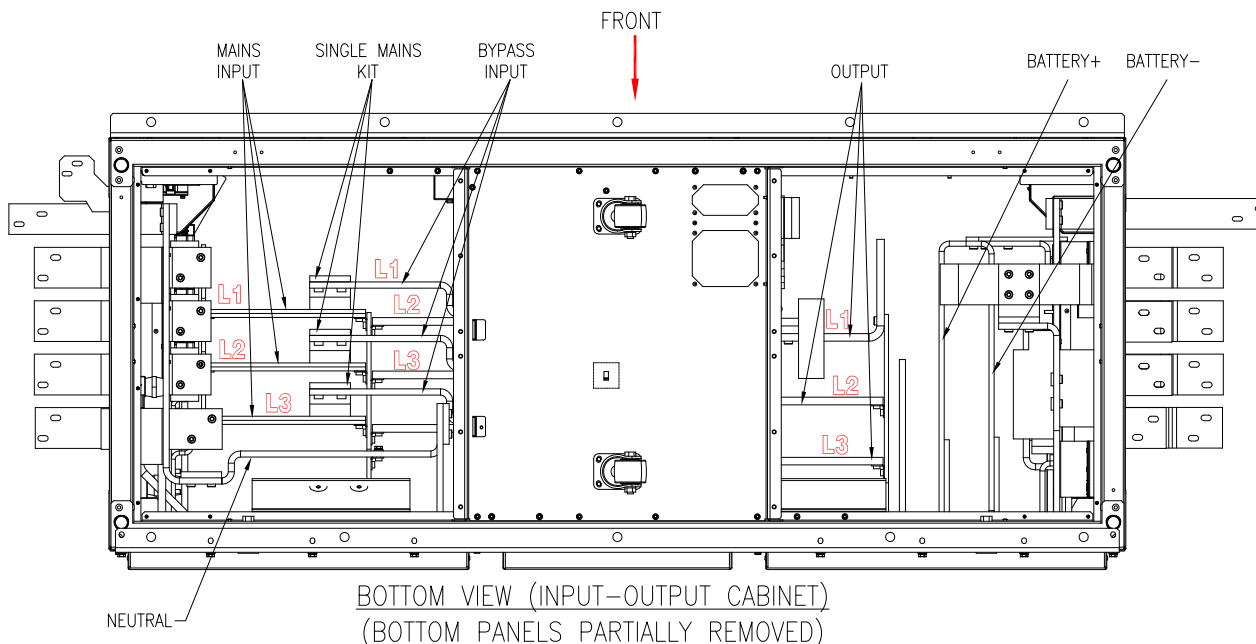
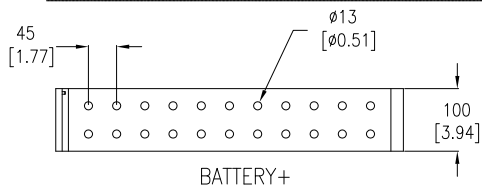
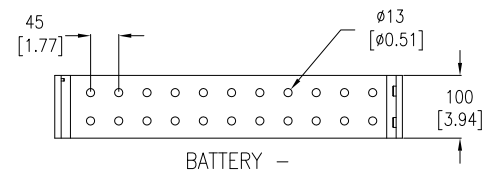
BYPASS BUSBARS (15MM THICK)



OUTPUT BUSBARS (15MM THICK)



BATTERY BUSBARS (10MM THICK)



NOTES:

1. INSTALLATION SHALL COMPLY WITH ALL APPLICABLE NATIONAL, STATE AND LOCAL ELECTRICAL REGULATIONS.
2. REFER TO PRODUCT DOCUMENTATION FOR ADDITIONAL DETAILS PRIOR TO INSTALLATION AND SITE PREPARATION WORK.
3. ALL DIMENSIONS ARE IN MILLIMETERS [INCHES].
4. SOME STRUCTURAL DETAILS HAVE BEEN OMITTED FOR CLARITY.

THIS DRAWING AND SPECIFICATIONS HEREIN ARE THE PROPERTY OF SCHNEIDER ELECTRIC AND SHALL NOT BE COPIED, REPRODUCED OR USED IN WHOLE OR IN PART, AS THE BASIS FOR THE MANUFACTURE OR SALE OF ITEMS WITHOUT WRITTEN PERMISSION FROM SCHNEIDER ELECTRIC. THIS DRAWING IS BASED UPON LATEST AVAILABLE INFORMATION AND IS SUBJECT TO CHANGE WITHOUT NOTICE.

Schneider Electric

TITLE: Galaxy VX SINGLE/PARALLEL
UPS 1000 / 1250 / 1500kW
Input: 380/400/415V, 3PH, 50Hz, SINGLE/DUAL MAINS
Output: 380/400/415V, 3PH, 50Hz
INPUT-OUTPUT CABINET-INTERNAL TOP&BOTTOM

DWG NO: GVX1000K1500HS
DRAWN: BALA
ENGINEER: L RASMUSSEN
APPROVED: G S / H N

REV. 1
16-DEC-16
16-DEC-16
16-DEC-16
FIRST ANGLE PROJECTION