

RATED SHORT CIRCUIT CURRENT		
DEVICE	WITH INPUT FUSES	WITHOUT INPUT FUSES
UPS AC IN	30KA SYMMETRICAL	10KA SYMMETRICAL
UPS AC OUT	30KA SYMMETRICAL	10KA SYMMETRICAL
MBP	30KA SYMMETRICAL	10KA SYMMETRICAL
BATTERY CABINET XR1/XR2	25KA SYMMETRICAL	25KA SYMMETRICAL

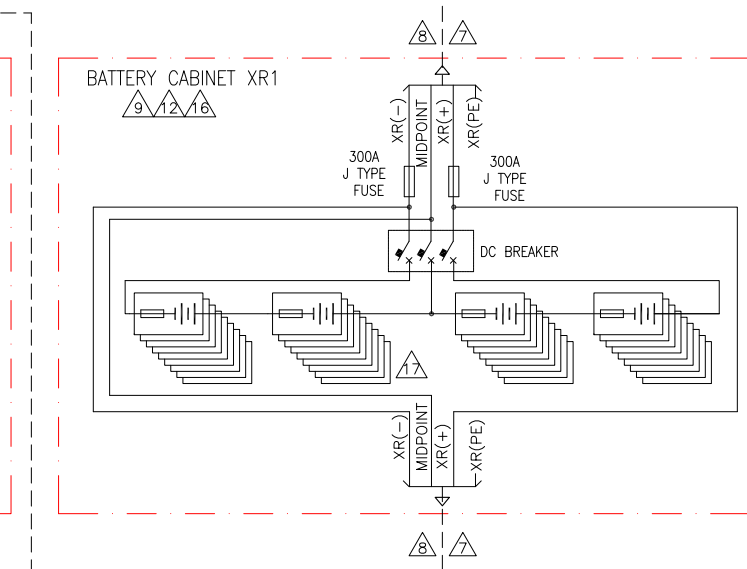
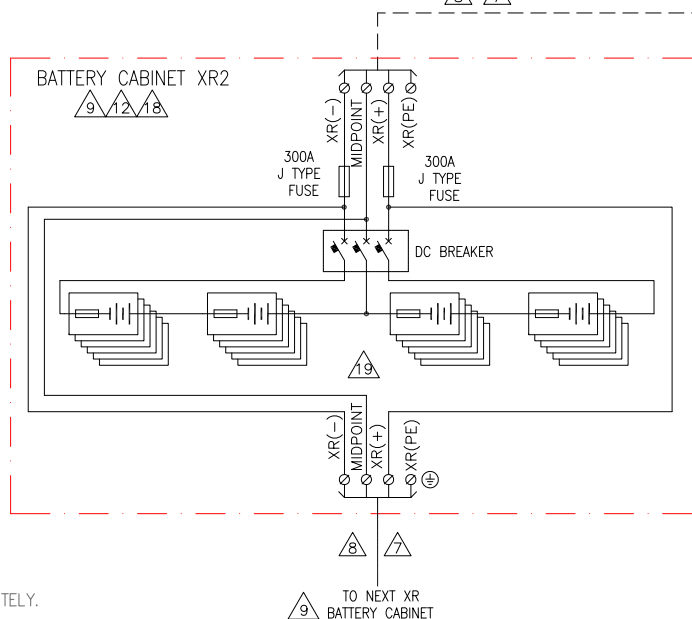
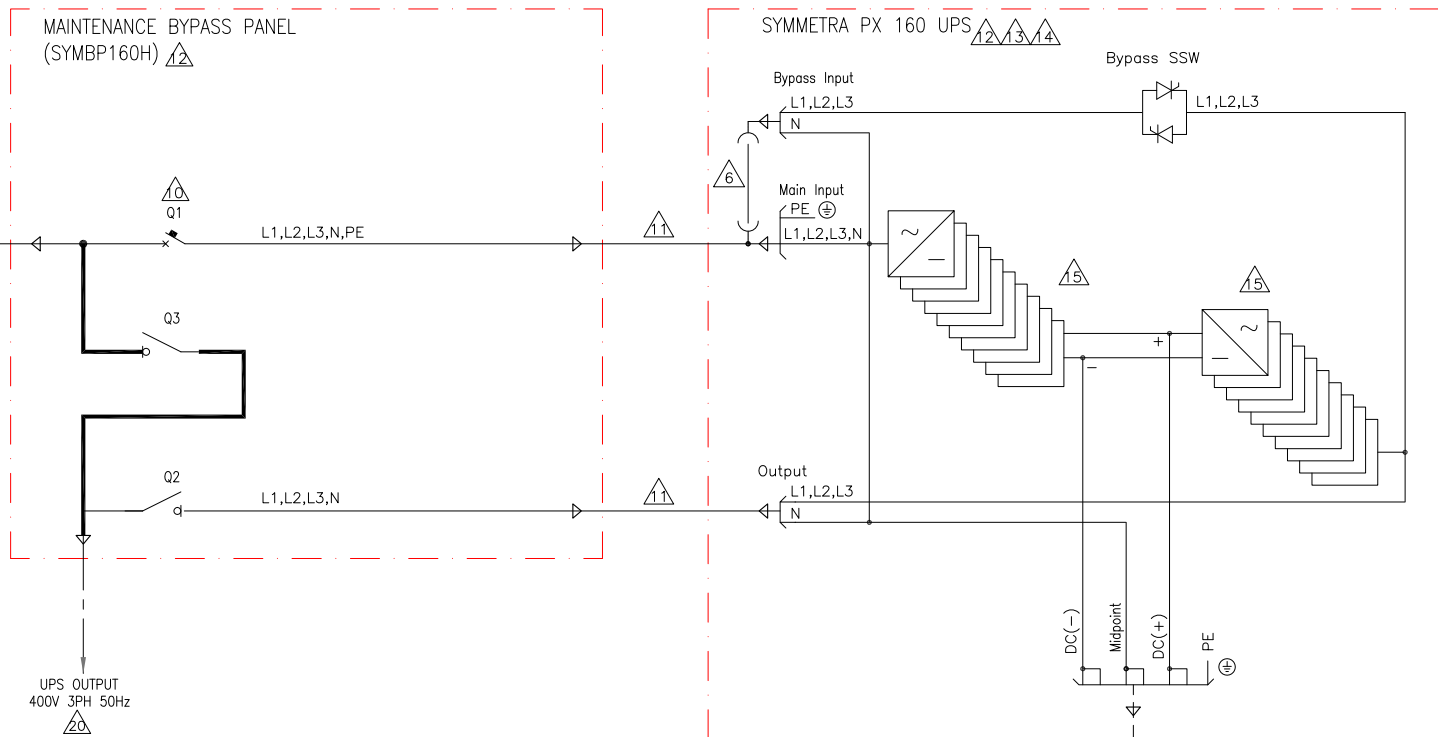
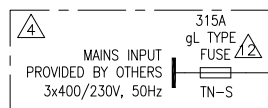
UPS RATING AND APPLICABLE SKU NUMBERS							
UPS RATING (KW)	EXPANDABLE UPS RATING (KW)	APPLICABLE UPS SKU NUMBER	APPLICABLE NUMBER OF UPS POWER MODULES	BATTERY CABINET XR1		BATTERY CABINET XR2	
				APPLICABLE BATTERY SKU NUMBER	APPLICABLE NUMBER OF BATTERY MODULES (TOTAL IN 4 BAYS)	APPLICABLE BATTERY SKU NUMBER	APPLICABLE NUMBER OF BATTERY MODULES (TOTAL IN 4 BAYS)
32	160	SYCF160KH+SYPM10K16H(2)	2	SYCFXR9+SYBTU2-PLP(12)	12	NA	NA
64		SYCF160KH+SYPM10K16H(4)	4	SYCFXR9+SYBTU2-PLP(24)	24	NA	NA
96		SYCF160KH+SYPM10K16H(6)	6	SYCFXR9+SYBTU2-PLP(36)	36	NA	NA
128		SYCF160KH+SYPM10K16H(8)	8	SYCFXR9+SYBTU2-PLP(36)	36	SYCFXR9+SYBTU2-PLP(12)	12
160	96	SYCF160KH+SYPM10K16H(10)	10	SYCFXR9+SYBTU2-PLP(36)	36	SYCFXR9+SYBTU2-PLP(24)	24
32		SYCF160KH+SYPM10K16H(2)	2	SYCFXR9+SYBTU2-PLP(12)	12	NA	NA
64		SYCF160KH+SYPM10K16H(4)	4	SYCFXR9+SYBTU2-PLP(24)	24	NA	NA
96		SYCF160KH+SYPM10K16H(6)	6	SYCFXR9+SYBTU2-PLP(36)	36	NA	NA

LEGEND:

- - - - - AC CABLE - PROVIDED BY OTHERS.
 - - - - - DC CABLE - PROVIDED BY OTHERS.
 ————— AC BUS

NOTES:

1. INSTALLATION MUST COMPLY WITH ALL APPLICABLE LOCAL AND NATIONAL CODES.
2. REFER TO PRODUCT DOCUMENTATION FOR ADDITIONAL DETAILS PRIOR TO INSTALLATION AND SITE PREPARATION WORK.
3. DRAWING DEPICTS POWER SYSTEM CONNECTIONS AND IS NOT REPRESENTATIVE OF PHYSICAL LAYOUT, PLEASE REFER TO MECHANICAL DRAWINGS FOR PHYSICAL LAYOUT.
- △4. 3x400/230V TN-S (PROVIDED BY OTHERS). FOR OTHER EARTHING PRINCIPLES, PLEASE CONTACT Schneider Electric. RECOMMENDED UPSTREAM PROTECTION IS A MINIMUM RATING TO SUPPORT MAXIMUM CURRENT, WITHOUT SELECTIVITY. IF SELECTIVITY IS REQUIRED, PLEASE CONTACT Schneider Electric.
5. ALL AC POWER CABLING IS L1,L2, L3, N, PE.
- △6. TO BE WIRED FOR SINGLE MAINS CONFIGURATIONS ONLY.
- △7. DC CABLING TO BE 600V RATED, 2 WIRE + GROUND, EACH CIRCUIT TO BE RUN IN SEPARATE CONDUITS, POSITIVE, NEGATIVE + GROUND.
- △8. CABLING PROVIDED BY OTHERS IF UPS AND BATTERY CABINETS ARE INSTALLED REMOTELY. FOR LINE-UP SOLUTION CABLING PROVIDED BY Schneider Electric.
- △9. NUMBER OF BATTERIES AND DC NOMINAL CURRENT SHOWN IN THIS DIAGRAM PROVIDES 5 MINUTES RUN TIME. MAXIMUM 4 BATTERY ENCLOSURES MAY BE USED WITH THE SYSTEM.
- △10. THE Q1 BREAKER FUNCTIONS AS A 3P BREAKER. THE NEUTRAL INPUT TO THE 4P Q1/Q3 BREAKER IS ALWAYS CONNECTED TO THE UPS REGARDLESS OF Q1 TRIP STATE.
- △11. AC CABLING PROVIDED BY SCHNEIDER ELECTRIC.



THIS DRAWING AND SPECIFICATIONS HEREIN ARE THE PROPERTY OF SCHNEIDER ELECTRIC AND SHALL NOT BE COPIED, REPRODUCED OR USED IN WHOLE OR IN PART, AS THE BASIS FOR THE MANUFACTURE OR SALE OF ITEMS WITHOUT WRITTEN PERMISSION FROM SCHNEIDER ELECTRIC. THIS DRAWING IS BASED UPON LATEST AVAILABLE INFORMATION AND IS SUBJECT TO CHANGE WITHOUT NOTICE.

Schneider Electric

TITLE: SYMMETRA PX
Input: 400/230V AC 3PH SINGLE MAINS
Output: 400/230V AC&400V AC 3PH 32~160kW
UPS WITH MBP
SYSTEM ONE LINE DIAGRAM

PROJECT: SUBMITTAL DRAWINGS SHEET 1 OF 2

DWG NO: SY32K160HMBP-SD
DRAWN: BALAMURUGAN
ENGINEER: J WOLSKI
APPROVED: J WOLSKI

REV. 1
1-JUL-19
1-JUL-19
1-JUL-19
ANGLE PROJECTION: N/A

INFRASTRUXURE PLANNING GUIDE SYMMETRA PX96 / PX160 (400V)																		
UPS FRAME	UPS RATING KVA / KW			AC INPUT (400V)							BATTERY SYSTEM			AC OUTPUT CURRENT @400V (A)	DC BREAKER – 3POLE FRAME (A)	BREAKER RATINGS–MBP (A)		
	QTY OF POWER MODULE (16KW)	[P] KW NOMINAL	POWER FACTOR	POWER (KW)		UTILITY SOURCE		CURRENT I (A)		*Q1 PROTECTION BREAKER (A)	NOMINAL VOLTAGE (V DC)	FULL LOAD POWER P (KW)	IMAX DC DISCHARGE (A)			Q1– 4POLE FRAME (A)	Q2– 4POLE FRAME (A)	Q3– 4POLE FRAME (A)
				NOMINAL	NOMINAL + CHARGING	FREQUENCY (HZ)	VOLTAGE (V)	NOMINAL	NOMINAL + CHARGING									
96KVA/160KVA / 96KW/160KW	1	16	1	17	19	50	400	24	27	63	2X192	17	55	23	320	400	400	400
	2	32		34	37			49	53	80		34	110	46				
	3	48		51	56			73	80	100		51	165	69				
	4	64		67	74			97	107	160		68	220	92				
	5	80		84	93			122	134	160		85	275	115				
	6	96		101	111			146	160	225		102	330	139				
160KVA / 160KW	7	112		118	130			170	187	225		119	385	162				
	8	128		135	148			194	214	250		135	440	185				
	9	144		152	167			219	241	400		152	495	208				
	10	160		168	185			243	267	400		169	550	231				

NOTES:
 SYMMETRA PX96 CONTAINS 2 FRAMES 1 X POWER FRAME AND 1 X BATTERY FRAME.
 SYMMETRA PX160 CONTAINS 3 FRAMES 1 X POWER FRAME AND 2 BATTERY FRAMES.
 THE SYMMETRA PX96 IS UPGRADABLE TO 160KW BY ADDING POWER MODULES AND BATTERY FRAME.