

**LEGEND:**  
 - - - - - AC CABLE - PROVIDED BY OTHERS

- NOTES:**
1. INSTALLATION SHALL COMPLY WITH ALL APPLICABLE NATIONAL, STATE AND LOCAL CODES.
  2. REFER TO PRODUCT DOCUMENTATION FOR ADDITIONAL DETAILS PRIOR TO INSTALLATION AND SITE PREPARATION WORK.
  3. DRAWING DEPICTS POWER SYSTEM CONNECTIONS AND IS NOT REPRESENTATIVE OF PHYSICAL LAYOUT, PLEASE REFER TO MECHANICAL DRAWINGS FOR PHYSICAL LAYOUT.
  4. MAXIMUM AVAILABLE FAULT CURRENT IS 30KAIC.
  5. AC SOURCE TO BE 208VAC 3PH WYE 4 WIRE+GROUND (CONTACT Schneider Electric, IF OTHER). REFER TO SHEET-3 FOR RECOMMENDED OCPD RATINGS.
  6. AC CABLING TO BE 600V RATED, 4 WIRE+GROUND.
  7. SINGLE MAINS CONFIGURATION IS A DEFAULT. REFER TO SHEET-2 FOR DUAL MAINS.
  8. THIS DRAWING SHOWS MINIMUM NUMBER OF XR BATTERY FRAMES. MAXIMUM (4) XR BATTERY FRAMES CAN BE BAYED TO UPS.
  9. DISTRIBUTION MODULES ARE NOT PART OF PDPM100F-M, CAN BE PURCHASED SEPARATELY FROM Schneider Electric.
  10. SEE INSTALLATION MANUAL FOR RECOMMENDED SETTINGS.
  11. REFER TO SHEET-3 FOR RECOMMENDED OCPD RATINGS.
  12. FOR PROPER INSTALLATION OF EPO, MIB BREAKER MUST BE INTERRUPTED UPON OF THE EPO BUTTON. A SHUNT TRIP COIL MAY THEREFORE BE NECESSARY FOR THIS PURPOSE. FOR MORE DETAILS, SEE EPO SECTION IN THE INSTALLATION MANUAL.

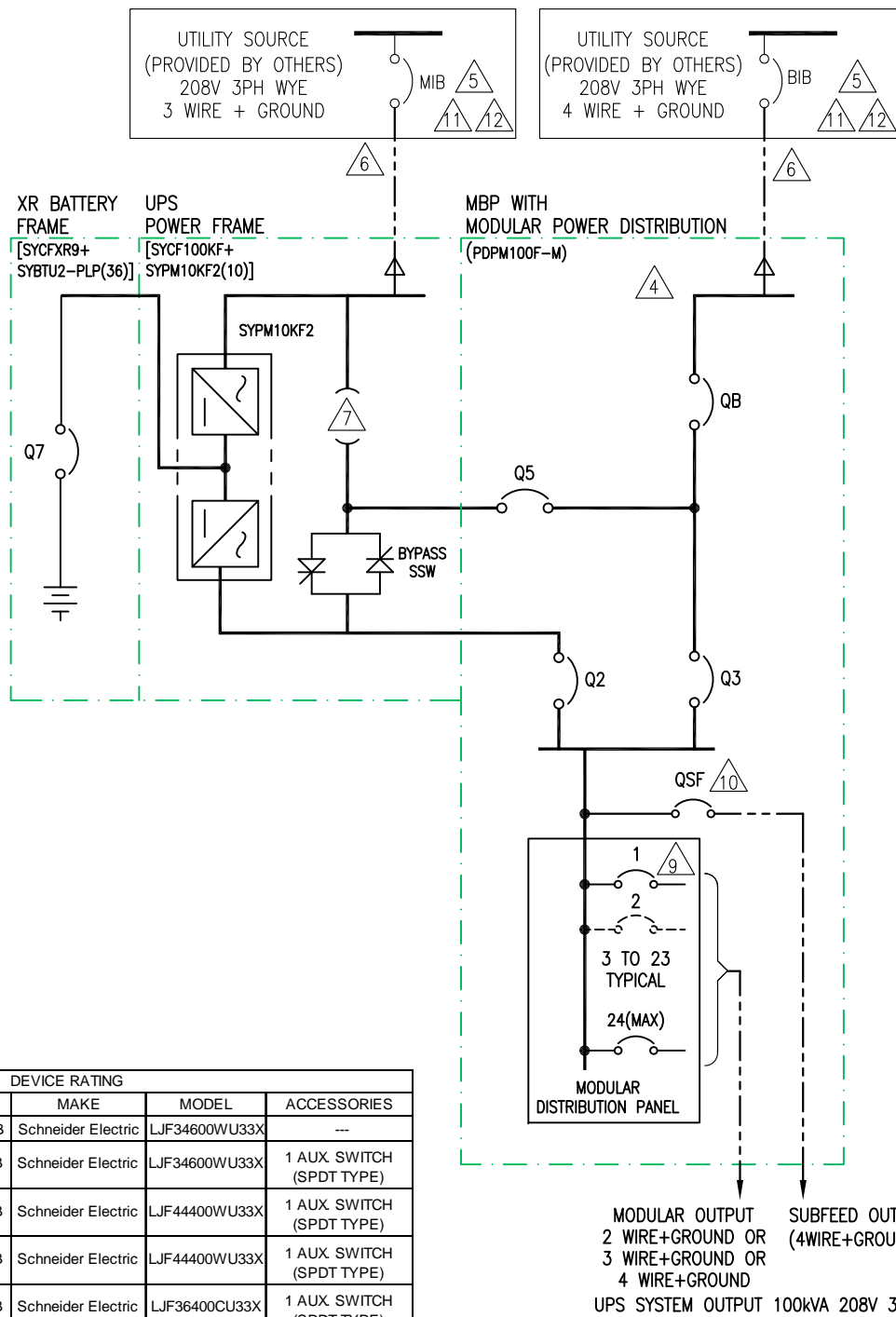
DEVICE RATING					
DEVICE	RATING	TYPE	MAKE	MODEL	ACCESSORIES
QB	600AF, 480/277VAC	3P MCCB	Schneider Electric	LJF34600WU33X	---
Q1	600AF, 480/277VAC	3P MCCB	Schneider Electric	LJF34600WU33X	1 AUX SWITCH (SPDT TYPE)
Q2	400AF, 480/277VAC	4P MCCB	Schneider Electric	LJF44400WU33X	1 AUX SWITCH (SPDT TYPE)
Q3	400AF, 480/277VAC	4P MCCB	Schneider Electric	LJF44400WU33X	1 AUX SWITCH (SPDT TYPE)
QSF	400AF, 600V	3P MCCB	Schneider Electric	LJF36400CU33X	1 AUX SWITCH (SPDT TYPE)
Q7	320A, 500VDC	3P DC BREAKER	ABB	T5N320TWAS4	1-SHUNT TRIP (110-125VAC/DC) 1 - AUX CONTACT (1 FORM C + 1 BA)

THIS DRAWING AND SPECIFICATIONS HEREIN ARE THE PROPERTY OF SCHNEIDER ELECTRIC AND SHALL NOT BE COPIED, REPRODUCED OR USED IN WHOLE OR IN PART, AS THE BASIS FOR THE MANUFACTURE OR SALE OF ITEMS WITHOUT WRITTEN PERMISSION FROM SCHNEIDER ELECTRIC. THIS DRAWING IS BASED UPON LATEST AVAILABLE INFORMATION AND IS SUBJECT TO CHANGE WITHOUT NOTICE.



**TITLE:** SYMMETRA PX 100  
 INPUT: 208V 3PH, SINGLE MAINS  
 OUTPUT: 208V 100KW  
 TOP FEED WITH PDU, WITHOUT XFMR  
 SYSTEM ONE LINE DIAGRAM

**DWG NO:** SY100K100F1T-PD-SD **REV.** 5  
**DRAWN:** JAYAPRAKASH 14-JAN-16 **ANGLE PROJECTION**  
**ENGINEER:** A WARNER/ F SYED 14-JAN-16  
**APPROVED:** B.SHERIDAN 14-JAN-16



**LEGEND:**  
 - - - - - AC CABLE - PROVIDED BY OTHERS

- NOTES:**
- INSTALLATION SHALL COMPLY WITH ALL APPLICABLE NATIONAL, STATE AND LOCAL CODES.
  - REFER TO PRODUCT DOCUMENTATION FOR ADDITIONAL DETAILS PRIOR TO INSTALLATION AND SITE PREPARATION WORK.
  - DRAWING DEPICTS POWER SYSTEM CONNECTIONS AND IS NOT REPRESENTATIVE OF PHYSICAL LAYOUT, PLEASE REFER TO MECHANICAL DRAWINGS FOR PHYSICAL LAYOUT.
  - MAXIMUM AVAILABLE FAULT CURRENT IS 30kAIC.
  - AC SOURCE TO BE 208VAC 3PH WYE 3 OR 4 WIRE+GROUND (CONTACT Schneider Electric, IF OTHER). REFER TO SHEET-3 FOR RECOMMENDED OCPD RATINGS.
  - AC CABLING TO BE 600V RATED, 3 OR 4 WIRE+GROUND.
  - SINGLE MAINS CONFIGURATION IS A DEFAULT.  
FOR DUAL MAINS CONFIGURATION REMOVE THE 3 SHORTING STRAPS/WIRES.
  - THIS DRAWING SHOWS MINIMUM NUMBER OF XR BATTERY FRAMES. MAXIMUM (4) XR BATTERY FRAMES CAN BE BAYED TO UPS.
  - DISTRIBUTION MODULES ARE NOT PART OF PDPM100F-M, CAN BE PURCHASED SEPARATELY FROM Schneider Electric.
  - SEE INSTALLATION MANUAL FOR RECOMMENDED SETTINGS.
  - REFER TO SHEET-3 FOR RECOMMENDED OCPD RATINGS.
  - FOR PROPER INSTALLATION OF EPO, MIB BREAKER MUST BE INTERRUPTED UPON OF THE EPO BUTTON. A SHUNT TRIP COIL MAY THEREFORE BE NECESSARY FOR THIS PURPOSE. FOR MORE DETAILS, SEE EPO SECTION IN THE INSTALLATION MANUAL.

DEVICE RATING					
DEVICE	RATING	TYPE	MAKE	MODEL	ACCESSORIES
QB	600AF, 480/277VAC	3P MCCB	Schneider Electric	LJF34600WU33X	---
Q5	600AF, 480/277VAC	3P MCCB	Schneider Electric	LJF34600WU33X	1 AUX SWITCH (SPDT TYPE)
Q2	400AF, 480/277VAC	4P MCCB	Schneider Electric	LJF44400WU33X	1 AUX SWITCH (SPDT TYPE)
Q3	400AF, 480/277VAC	4P MCCB	Schneider Electric	LJF44400WU33X	1 AUX SWITCH (SPDT TYPE)
QSF	400AF, 600V	3P MCCB	Schneider Electric	LJF36400CU33X	1 AUX SWITCH (SPDT TYPE)
Q7	320A, 500VDC	3P DC BREAKER	ABB	T5N320TWAS4	1-SHUNT TRIP (110-125VAC/DC) 1 - AUX CONTACT (1 FORM C + 1 BA)

THIS DRAWING AND SPECIFICATIONS HEREIN ARE THE PROPERTY OF SCHNEIDER ELECTRIC AND SHALL NOT BE COPIED, REPRODUCED OR USED IN WHOLE OR IN PART, AS THE BASIS FOR THE MANUFACTURE OR SALE OF ITEMS WITHOUT WRITTEN PERMISSION FROM SCHNEIDER ELECTRIC. THIS DRAWING IS BASED UPON LATEST AVAILABLE INFORMATION AND IS SUBJECT TO CHANGE WITHOUT NOTICE.



<b>TITLE:</b> SYMMETRA PX 100 INPUT: 208V 3PH, DUAL MAINS OUTPUT: 208V 100KW TOP FEED WITH PDU, WITHOUT XFMR SYSTEM ONE LINE DIAGRAM	<b>DWG NO:</b> SY100K100F2T-PD-SD	<b>REV:</b> 5	
	<b>DRAWN:</b> JAYAPRAKASH	14-JAN-16	<b>ANGLE PROJECTION:</b> N.A.
<b>PROJECT:</b> SUBMITTAL DRAWINGS	<b>SHEET 2 OF 3</b>	<b>APPROVED:</b> B.SHERIDAN	14-JAN-16

# Symmetra® PX 100K UPS Frame Submittal Data - w/ Modular PDU - w/o Transformer

UPS Rating				Rectifier AC Input MIB Dual or Single Feed <sup>4</sup>								Bypass AC Input BIB Dual Feed <sup>4</sup>						External Battery System <sup>5</sup>					AC Output	
				Voltage		Current		Recommendations <sup>3, 9, 10</sup>				Currents		Recommendations <sup>3, 9</sup>				Nominal VDC	Battery kW	Current @ Nom. VDC	Recommendations <sup>3, 9</sup>		Current	
UPS Frame Rating	Qty of 10kW Power Modules <sup>8</sup>	kVA	kW	Input <sup>1</sup>	Output <sup>2</sup>	Full Load	Max. <sup>6</sup>	100% OCPD	100% Cable	80% OCPD	80% Cable	NOM.	Max. <sup>7</sup>	100% OCPD	100% Cable	80% OCPD	80% Cable				100% OCPD	100% Cable	NOM.	Max. <sup>7</sup>
<b>100kVA/100kW 100K Frame</b>	1	10	10	208	208	33	36	40A	1x 8	45A	1x 8	28	35	30A	1x 8	35A	1x 8	2x 192	11	28				
	2	20	20	208	208	66	72	80A	1x 4	90A	1x 4	56	69	60A	1x 6	70A	1x 4	2x 192	22	56	60A	1x 6	56	70
	3	30	30	208	208	100	108	110A	1x 2	125A	1x 1	83	104	90A	1x 4	110A	1x 2	2x 192	32	84	90A	1x 4	84	105
	4	40	40	208	208	133	144	150A	1x 1/0	175A	1x 2/0	111	139	125A	1x 2	150A	1x 1/0	2x 192	43	113	125A	1x 2	112	140
	5	50	50	208	208	166	180	200A	1x 3/0	225A	1x 4/0	139	174	150A	1x 1/0	175A	1x 2/0	2x 192	54	141	150A	1x 1/0	140	175
	6	60	60	208	208	199	216	225A	1x 4/0	250A	1x 250	167	208	175A	1x 2/0	225A	1x 4/0	2x 192	65	169	175A	1x 2/0	168	210
	7	70	70	208	208	232	252	300A	1x 250	300A	1x 350	195	243	200A	1x 3/0	250A	1x 250	2x 192	76	197	200A	1x 3/0	196	245
	8	80	80	208	208	266	288	300A	1x 350	350A	1x 400	222	278	225A	1x 4/0	300A	1x 300	2x 192	86	225	225A	1x 4/0	224	280
	9	90	90	208	208	299	324	350A	1x 400	400A	1x 500	250	312	300A	1x 250	350A	1x 400	2x 192	97	253	300A	1x 250	252	315
<b>10 <sup>8</sup></b>	<b>100</b>	<b>100</b>	<b>208</b>	<b>208</b>	<b>332</b>	<b>360</b>	<b>400A</b>	<b>1x 500</b>	<b>450A</b>	<b>2x4/0</b>	<b>278</b>	<b>347</b>	<b>300A</b>	<b>1x 300</b>	<b>350A</b>	<b>1x 500</b>	<b>2x 192</b>	<b>108</b>	<b>282</b>	<b>300A</b>	<b>1x 300</b>	<b>278</b>	<b>347</b>	

**APC Symmetra® PX**

Notes. 208Y/120 V (Transformerless) Modular PDU: PDPM100F-M

1. Mains Input source(s) must be 208V Wye solidly grounded. Contact Schneider Electric if other.
2. Output is either 208V Wye 3-wire + Ground or 4-wire + Ground. Bypass source shall be 4-wire +G.
3. Recommended cables are THHN AWG/kcmil minimum requirement in raceway, sized for 30°C environment, 75°C terminations, PFC load, and three (3) current carrying conductors per circuit. All cabling must comply with installation site conditions and any applicable Local or National Codes.
4. Either single feed MIB or dual feed BIB input for the bypass shall be 4-wire+G. Rectifier MIB input for Dual Feed shall be 3-wire +G. See respective one-line drawings for further clarification.
5. Contact Schneider Electric for assistance with all external battery designs. Maximum allowed DC cabling voltage drop is 1 VDC.
6. Electronic Input Current Limit
7. This is the UPS short time rating of 125% Overload for 10 minutes. Actual short time performance may be limited by the overcurrent protective device selected.
8. For maximum scalability or future expansion it is recommended that the UPS frames be installed at their full ratings - see bold highlighted data
9. All OCPD's and cabling are by others.
10. Dual feed only for mains 1 input. See Bypass AC Input for mains 2 input.
11. OCPD = Over Current Protective Device
12. Final selections are responsibility of Engineer of record based on installed conditions and SCC/ Selective co-ordination/ arc-flash analysis.

THIS DRAWING AND SPECIFICATIONS HEREIN ARE THE PROPERTY OF SCHNEIDER ELECTRIC AND SHALL NOT BE COPIED, REPRODUCED OR USED IN WHOLE OR IN PART, AS THE BASIS FOR THE MANUFACTURE OR SALE OF ITEMS WITHOUT WRITTEN PERMISSION FROM SCHNEIDER ELECTRIC. THIS DRAWING IS BASED UPON LATEST AVAILABLE INFORMATION AND IS SUBJECT TO CHANGE WITHOUT NOTICE.



TITLE: SYMMETRA PX 100  
 INPUT: 208V 3PH  
 OUTPUT: 208V 100KW  
 WITH PDU, WITHOUT XFMR  
 SITE PLANNING DATA

PROJECT: SUBMITTAL DRAWINGS SHEET 3 OF 3

DWG NO: SY100K100FT-PD-SPD REV. 1

DRAWN: JAYAPRAKASH	05-JUN-15	ANGLE PROJECTION
ENGINEER: A WARNER/ F SYED	05-JUN-15	N.A.
APPROVED: B.SHERIDAN	05-JUN-15	