

# NOTES:

1. PLEASE REFER TO APC INSTALLATION GUIDE.
- △ 2. UTILITY SOURCE MUST BE 2WIRE+GROUND, PROVIDED BY OTHERS. RECOMMENDED INPUT BRANCH CIRCUIT BREAKER RATINGS FOR SINGLE PHASE INPUT-100A, FOR TWO PHASE INPUT-50A.
3. DASHED LINES BETWEEN UNITS ( - - - ) REPRESENT CABLING PROVIDED BY OTHERS.
4. RECOMMENDED MAXIMUM OUTPUT BREAKER RATING IS 100A. MAXIMUM VA IS LIMITED TO 20KVA.
- △ 5. TABLE-1

INPUT NO OF PHASE	INPUT VOLTAGE (AC)		OUTPUT VOLTAGE AT 100A (20kVA UNITS)			
	SWITCH POSITION	SWITCH CONTACTS (CLOSE POSITION)	TERMINAL BLOCK CONNECTIONS			
SINGLE PHASE	200-240	1-2, 5-6, 13-14	7, 10	7, 9	8, 10	8, 7
	208V	3-4, 7-8, 13-14	200/240V	208V	100/120V	100/120V
TWO PHASE	400V	3-4, 11-12	240V	208V	120V	120V
	480V	1-2, 9-10	220-240V	--	--	--
			240V	208V	120V	120V

- △ 6. THE GROUND ELECTRODE CONDUCTOR IS PROVIDED BY OTHERS.
7. INSTALLATION MUST COMPLY WITH ALL APPLICABLE NATIONAL AND LOCAL CODES.

THIS DRAWING AND SPECIFICATIONS HEREIN ARE THE PROPERTY OF AMERICAN POWER CONVERSION AND SHALL NOT BE COPIED, REPRODUCED OR USED IN WHOLE OR IN PART, AS THE BASIS FOR THE MANUFACTURE OR SALE OF ITEMS WITHOUT WRITTEN PERMISSION FROM APC. THIS DRAWING IS BASED UPON LATEST AVAILABLE INFORMATION AND IS SUBJECT TO CHANGE WITHOUT NOTICE.

**APC**  
www.apc.com

TITLE:  
ISOLATION/STEP-DOWN TRANSFORMER 20kVA  
INPUT: 200-240V AC/400V AC 2PH  
OUTPUT: 200-240V AC/120V AC  
SYSTEM WIRING DIAGRAM

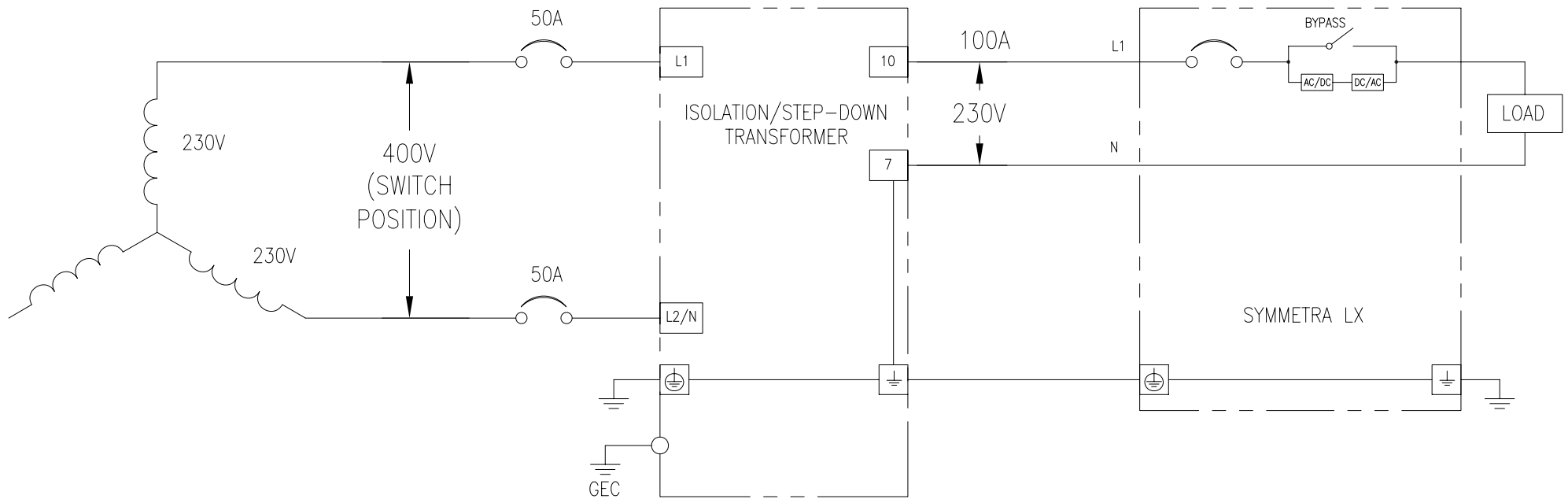
PROJECT: SUBMITTAL DRAWINGS SHEET 1 OF 2

DWG NO: APTF20KW01-WD

DRAWN: BALAMURUGAN	13-SEP-07
ENGINEER: K.WHITE/B.BUNGAYAO	13-SEP-07
APPROVED: M.TAVARES	13-SEP-07

REV. 0  
ANGLE PROJECTION NA

LOAD BALANCING FOR 230V SYMMETRA LX BYPASS  
TWO-PHASE TO SINGLE-PHASE APPLICATION



THIS DRAWING AND SPECIFICATIONS HEREIN ARE THE PROPERTY OF AMERICAN POWER CONVERSION AND SHALL NOT BE COPIED, REPRODUCED OR USED IN WHOLE OR IN PART, AS THE BASIS FOR THE MANUFACTURE OR SALE OF ITEMS WITHOUT WRITTEN PERMISSION FROM APC. THIS DRAWING IS BASED UPON LATEST AVAILABLE INFORMATION AND IS SUBJECT TO CHANGE WITHOUT NOTICE.

**APC**  
www.apc.com

TITLE:  
ISOLATION/STEP-DOWN TRANSFORMER 20kVA  
INPUT: 200-240V AC/400V AC 2PH  
OUTPUT: 200-240V AC/120V AC  
SYSTEM WIRING DIAGRAM

PROJECT: SUBMITTAL DRAWINGS SHEET 2 OF 2

DWG NO: APTF20KW01-WD

DRAWN: BALAMURUGAN	13-SEP-07
ENGINEER: K.WHITE/B.BUNGAYAO	13-SEP-07
APPROVED: M.TAVARES	13-SEP-07

REV. 0  
ANGLE PROJECTION NA