



Symmetra PX Battery Enclosure

10-80 kW
208 V

Receiving, Unpacking, and
Moving to Site



Symmetra® PX 10-80 kW

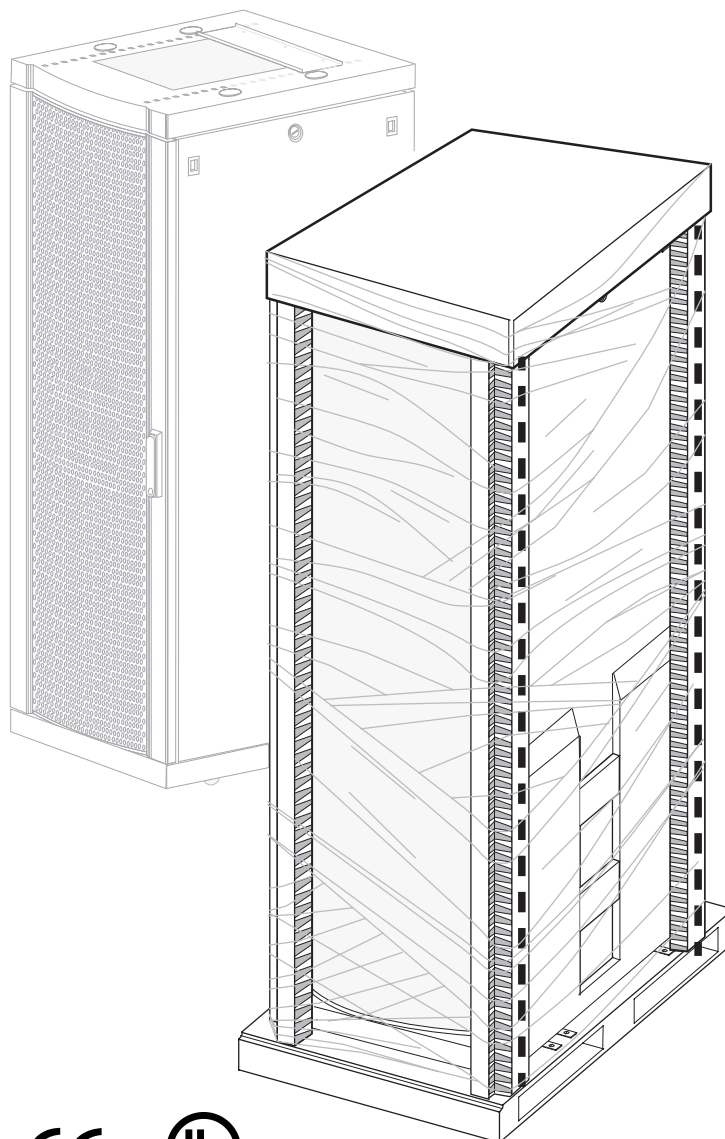
Battery Enclosure

Receiving, Unpacking, and Moving to Site



Note

If any shipping damage has been detected, contact APC
(see Technical Support Numbers)



Contents

- Safety 1**
 - SAVE THESE INSTRUCTIONS 1
 - Symbols used in this guide 1
 - ON, OFF & STAND-BY Switch Positions 2
 - Battery Safety 2
- Battery Enclosure and Module 3**
 - Weights and Dimensions 3
- Receiving, Unpacking & Moving to Site 4**
 - Receiving Enclosure & Modules/Removal of Plastic & Corner Protection 4
 - Moving to Installation Site 4
 - Removing from Pallet 6
- Operating Environment 8**
 - Operating Space 8
 - Technical Support 9

IMPORTANT SAFETY INSTRUCTIONS

SAVE THESE INSTRUCTIONS

This guide contains important instructions for the Symmetra PX that should be followed when handling the UPS, Battery Enclosures, and Batteries.

Symbols used in this guide



Warning!

Risk of Electric Shock.



Caution!

Read this information.



Note

Indicates important information.



Heavy

Indicates a heavy load that should not be lifted without assistance.



Indicates that more information is available on this subject in a different section of this manual.



See also

Indicates that more information is available on the same subject in a different manual.

ON, OFF & STAND-BY Switch Positions



Indicates that a switch or current protection device is in the ON position.



Indicates the OFF position for a switch or a breaker



Indicates that a switch is in the STAND-BY position

Battery Safety

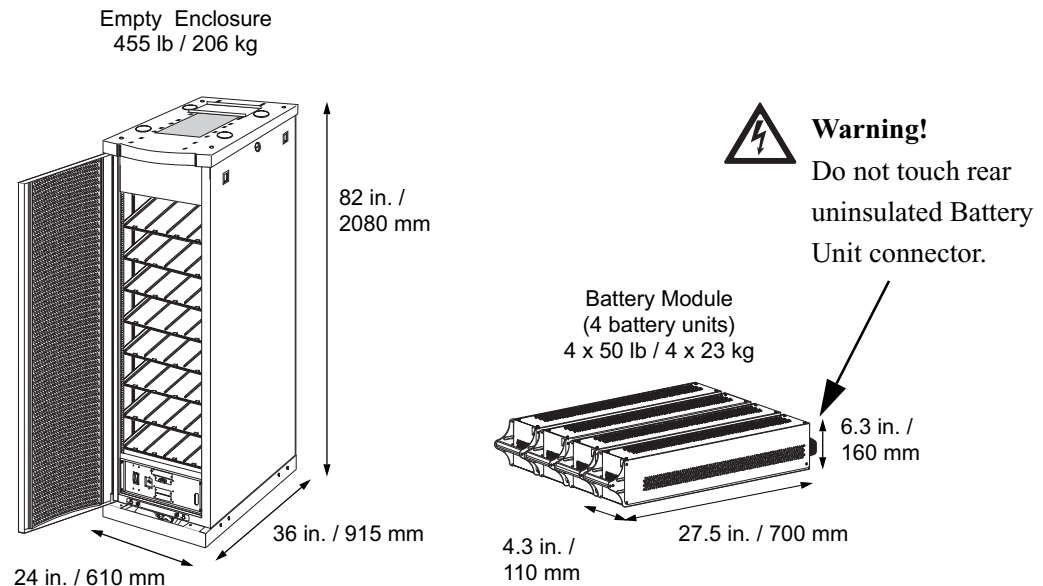


Warning!

- Remove all conductive jewelry such as chains, watches, and rings before handling the Battery Units.
- Battery Units do not contain serviceable parts. Do not open.
- Do not dispose of batteries in a fire, as they may explode. Do not mutilate batteries, as released electrolyte is harmful to the skin and eyes, and may be toxic.

Battery Enclosure and Module

Weights and Dimensions



Receiving, Unpacking & Moving to Site

Receiving Enclosure & Modules/Removal of Plastic & Corner Protection



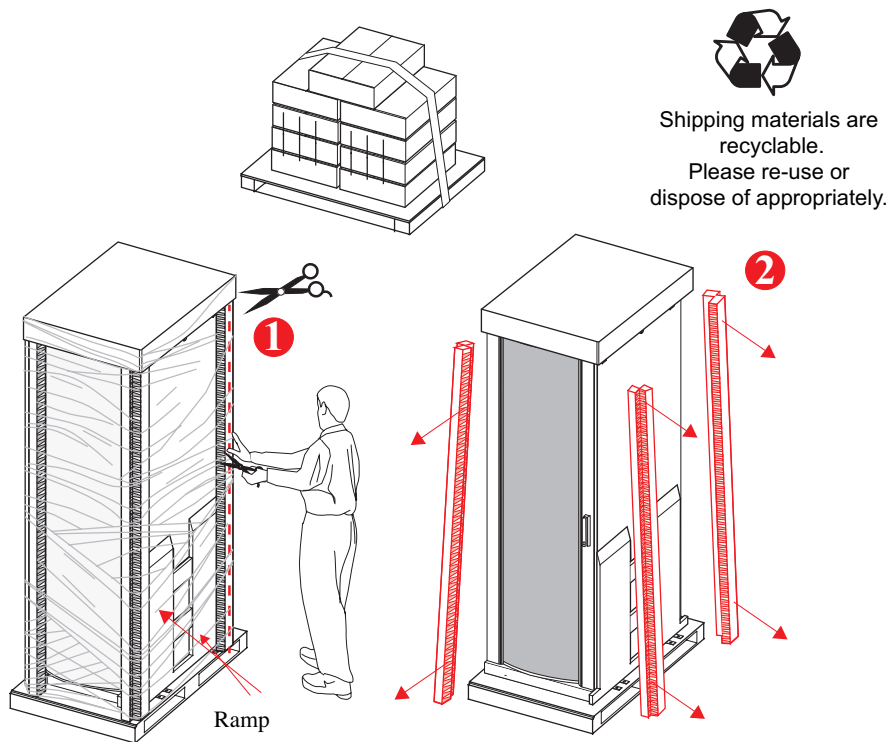
Note

Inspect shipment and verify that labeled boxes match purchase order.



Note

If any damage has been detected, contact Customer Support at 877-537-0607.
See Technical Support for Customer Support Numbers in Europe.

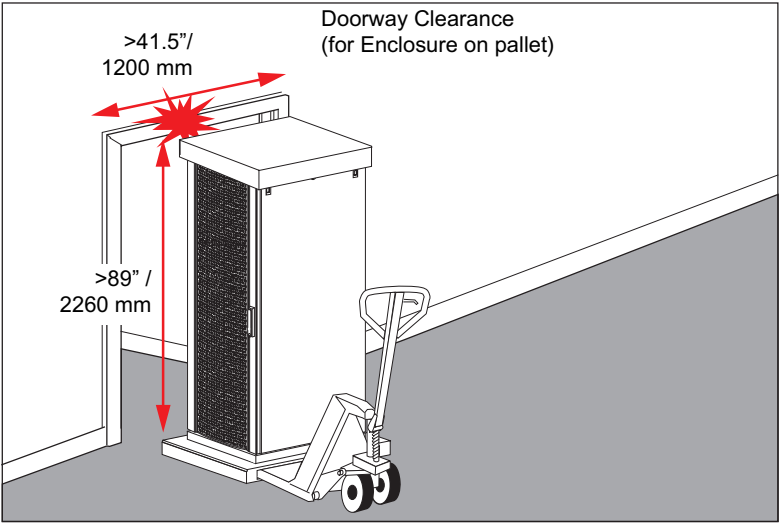


Moving to Installation Site

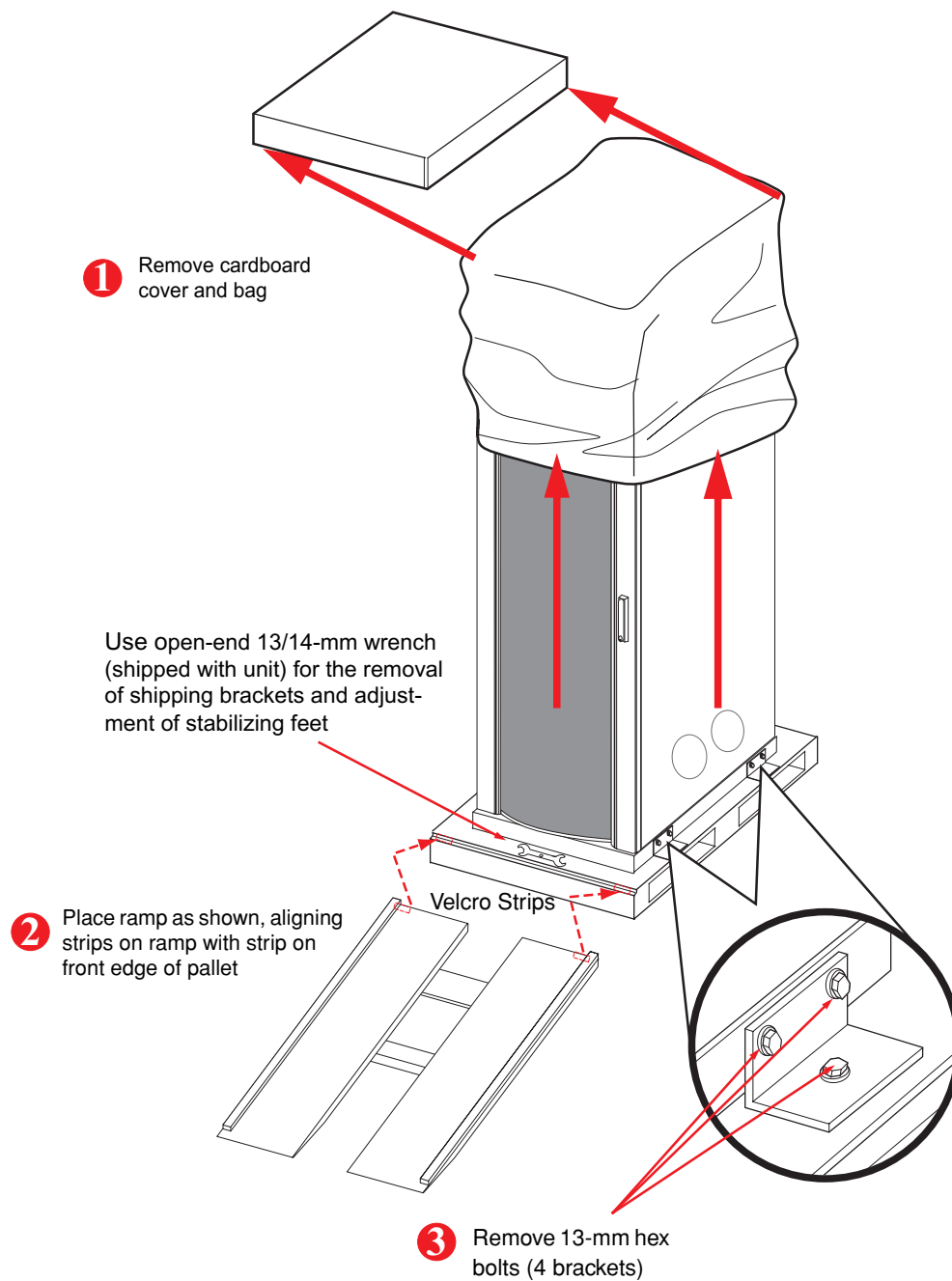


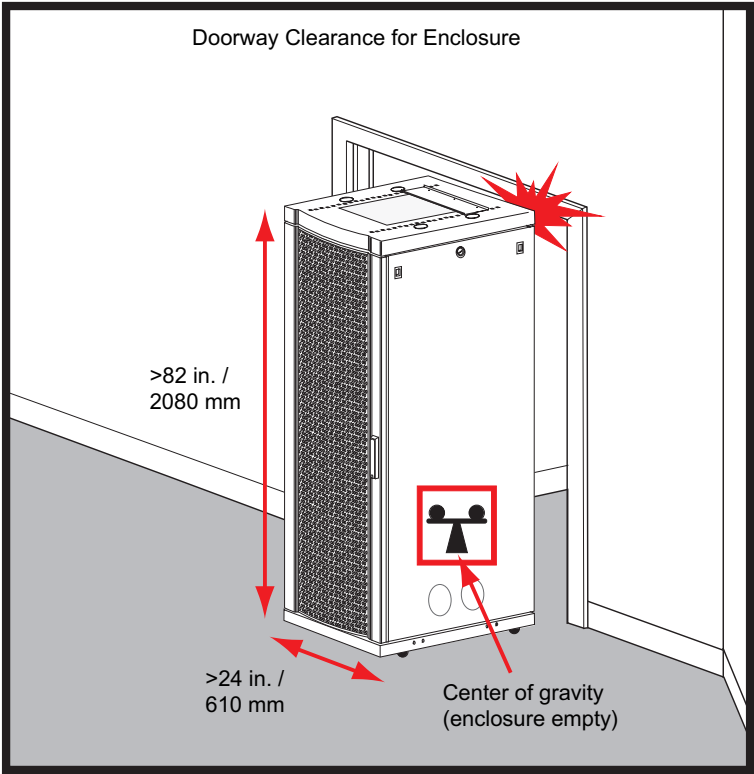
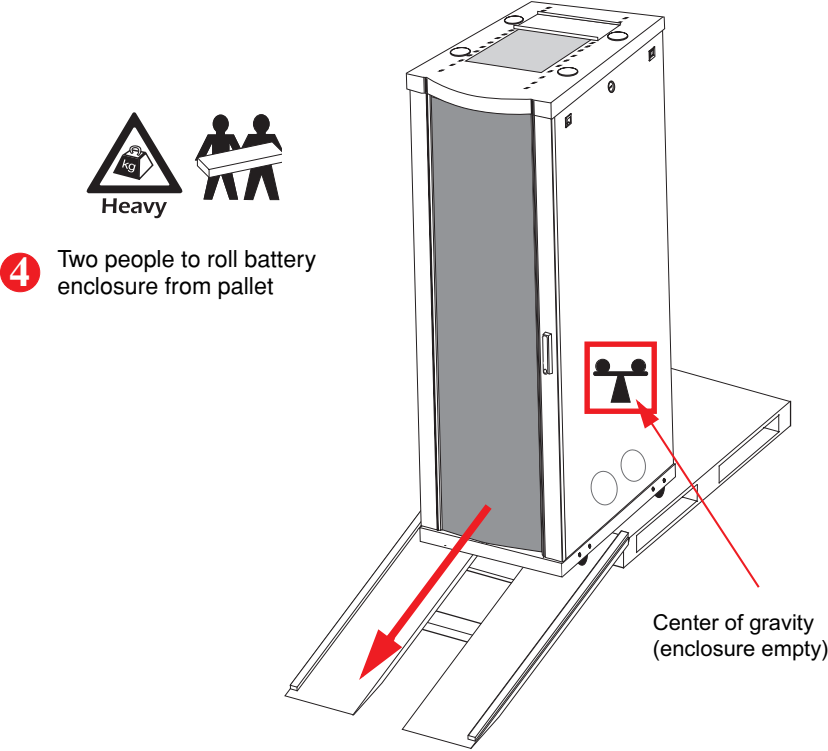
Note

If Enclosure height exceeds doorway height, remove from pallet and wheel through door (See Removing from Pallet).



Removing from Pallet





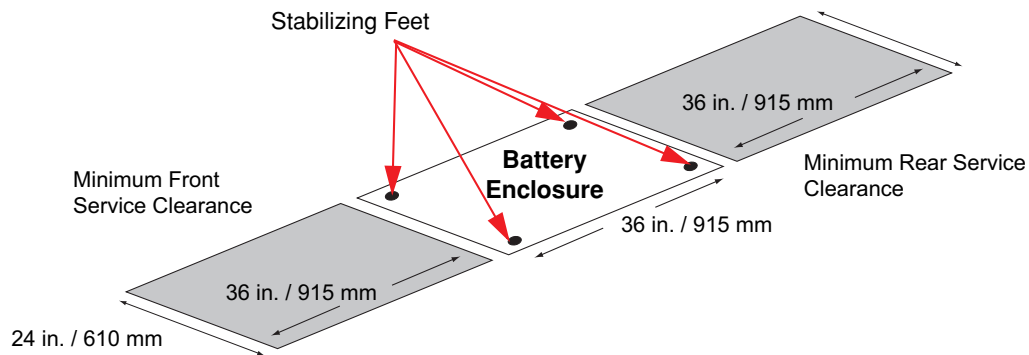
Operating Environment

Operating Space



Warning!

The Battery Enclosure is heavy (2120 lb./962 kg) in maximum configuration. Ensure that the floor and sub-floor can support the total weight of the configuration when concentrated on the stabilizing feet.



Note

Proceed to the Symmetra PX Battery Enclosure Installation Manual. If you have purchased any options, refer to applicable guides.

Install the UPS in an Indoor, Controlled Environment				
Temperature Range: 32°-104°F / 0°-40° C	Keep Ventilated Front-to-Rear Airflow	Relative Humidity: <95% Non-condensing	No Conductive Dust or Corrosive Fumes	Max. Elevation: 0-10,000 ft. / 0-3,000 m
Full Load Loss at Nominal Mains: 23,743 BTU/hr (6,957 Watts)				

Technical Support

Country	Tech Support	Country	Tech Support
Austria	0800 296480	Norway	800 11632
Belgium	0800 15063	Poland	0801 345917
Czech Republic	0800 102063	Portugal	800 853182
Denmark	800 18153	Russia	095 9167166
Finland	9800 13374	South Africa	011 4652583
France	0800 906483	Spain	900 953533
Germany	0800 1801227	Sweden	020 795419
Greece	00800 35312206	Switzerland	080055 6177
Hungary	0640 200262	Turkey	0800 2113305
Ireland	1800 702000	UK	0800 132990
Israel	1800 9452206	USA & North America	877-537-0607
Italy	800 874731	Other Countries	353 91 702055
Luxemburg	0800 2091	Fax	353 91 755275
Netherlands	0800 022 4655	eSupport	http://esupport.apcc.com



APC Worldwide Customer Support

Customer support for this or any other APC product is available at no charge in any of the following ways:

- ☐ Visit the APC Web site to find answers to frequently asked questions (FAQs), to access documents in the APC Knowledge Base, and to submit customer support requests.
 - ☐ – ☐ **www.apc.com** (Corporate Headquarters)
 - ☐ ☐ Connect to localized APC Web sites for specific countries, each of which provides customer support information.
 - ☐ – ☐ **www.apc.com/support/**
 - ☐ ☐ Global support with FAQs, knowledge base, and e-support.
- ☐ Contact an APC Customer Support center by telephone or e-mail.
 - ☐ – ☐ Regional centers:

APC headquarters U.S., Canada	877-537-0607 (toll free)
Latin America	(1) (401) 789-5735 (USA)
Europe, Middle East, Africa	(353) (91) 702020 (Ireland)
Japan	(0) 3 5434-2021

- ☐ – Local, country-specific centers: go to www.apc.com/support/contact for contact information.

Contact the APC representative or other distributor from whom you purchased your APC product for information on how to obtain local customer support.

Entire contents copyright © 2003 American Power Conversion. All rights reserved.
Reproduction in whole or in part without permission is prohibited. APC, the APC logo, Symmetra, and InfraStruXure are trademarks of American Power Conversion Corporation and may be registered in some jurisdictions. All other trademarks, product names, and corporate names are the property of their respective owners and are used for informational purposes only.