

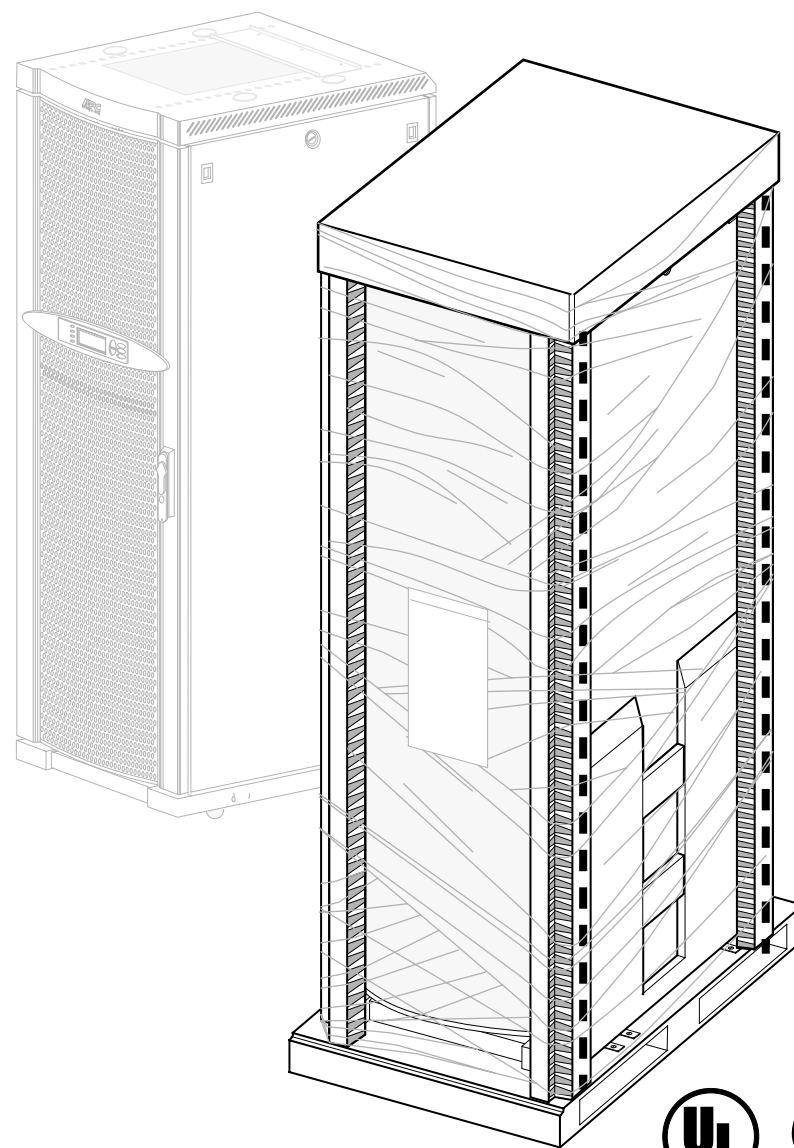


# Symmetra® PX

## Extended Run (XR) Battery Enclosure

### Receiving, Unpacking, and Moving to Installation Site Guide

! If any shipping damage has been detected, contact APC (see applicable nos. in Appendix A).



XR Battery Enclosure



## 1 IMPORTANT SAFETY INSTRUCTIONS

### SAVE THESE INSTRUCTIONS

This guide contains important instructions for the XR Battery Enclosure that should be followed when handling the Enclosure and batteries.



**WARNING!**  
Risk of Electric Shock



**CAUTION!**  
Read this important information

Do not lift heavy loads without assistance.	<40 lb. <18 kg	40-70 lb. 18 - 32 kg	70-120 lb. 32 - 54 kg	>120 lb. >54 kg

Figure 1

- Remove all conductive jewelry such as chains, watches, and rings before handling the Battery Units.
- Battery Units do not contain serviceable parts. Do not open.
- Do not dispose Battery Units in a fire for they may explode. Do not mutilate Battery Units for released electrolyte may be toxic and is harmful to the skin and eyes.

**Empty Enclosure**  
550 lb / 250 kg

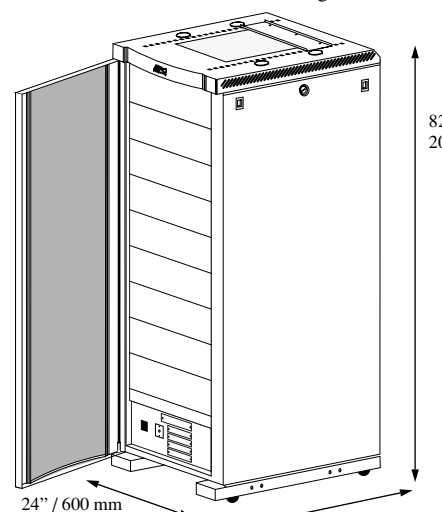


Figure 2

**Battery Module**  
4 x 50 lb / 4 x 23 kg

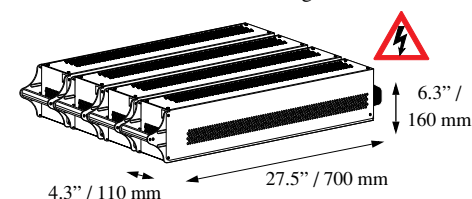


Figure 3



**WARNING!** Do not touch rear uninsulated Battery Unit connector.



## 2 Receiving Enclosure & Modules / Removal of Plastic & Corner Protection

! Inspect shipment and verify that labeled boxes match purchase order.

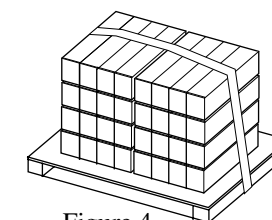


Figure 4



Shipping materials are recyclable.  
Please re-use or dispose of appropriately.

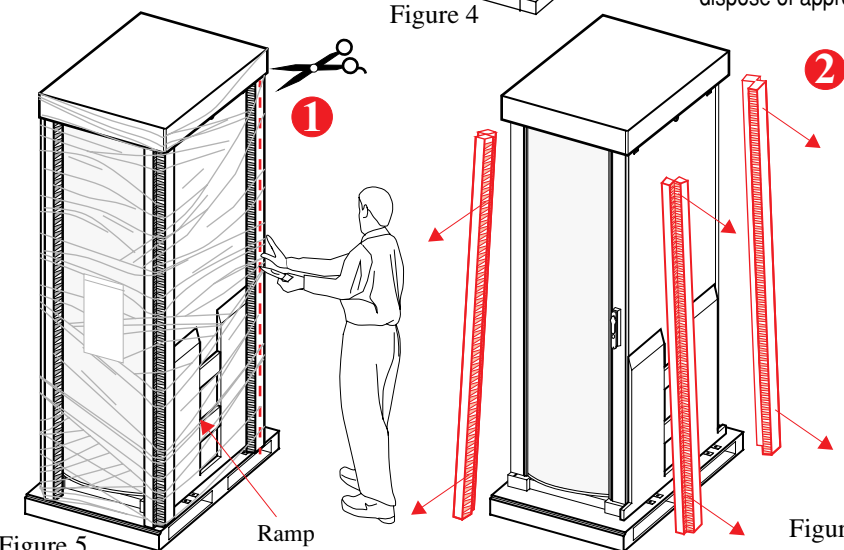


Figure 5

Ramp

Figure 6

## 3 Moving to Installation Site

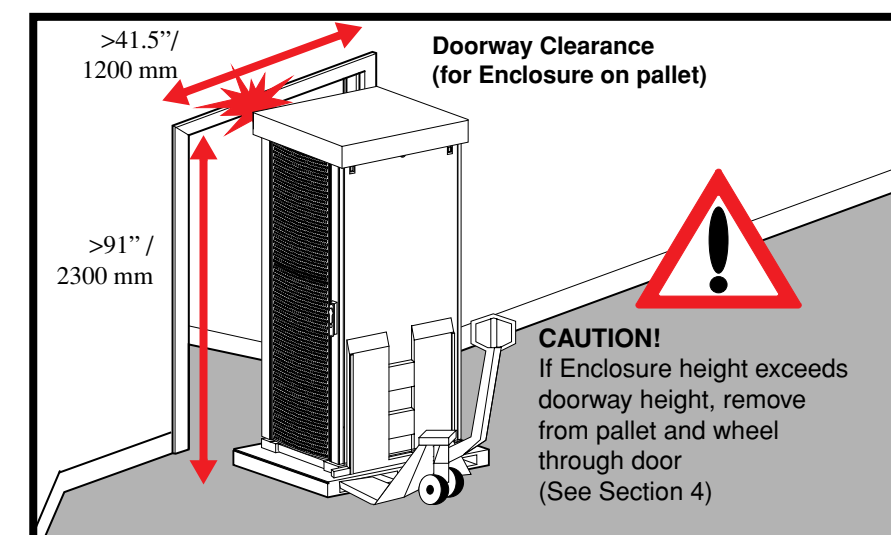


Figure 7



# 4 Removing from Pallet

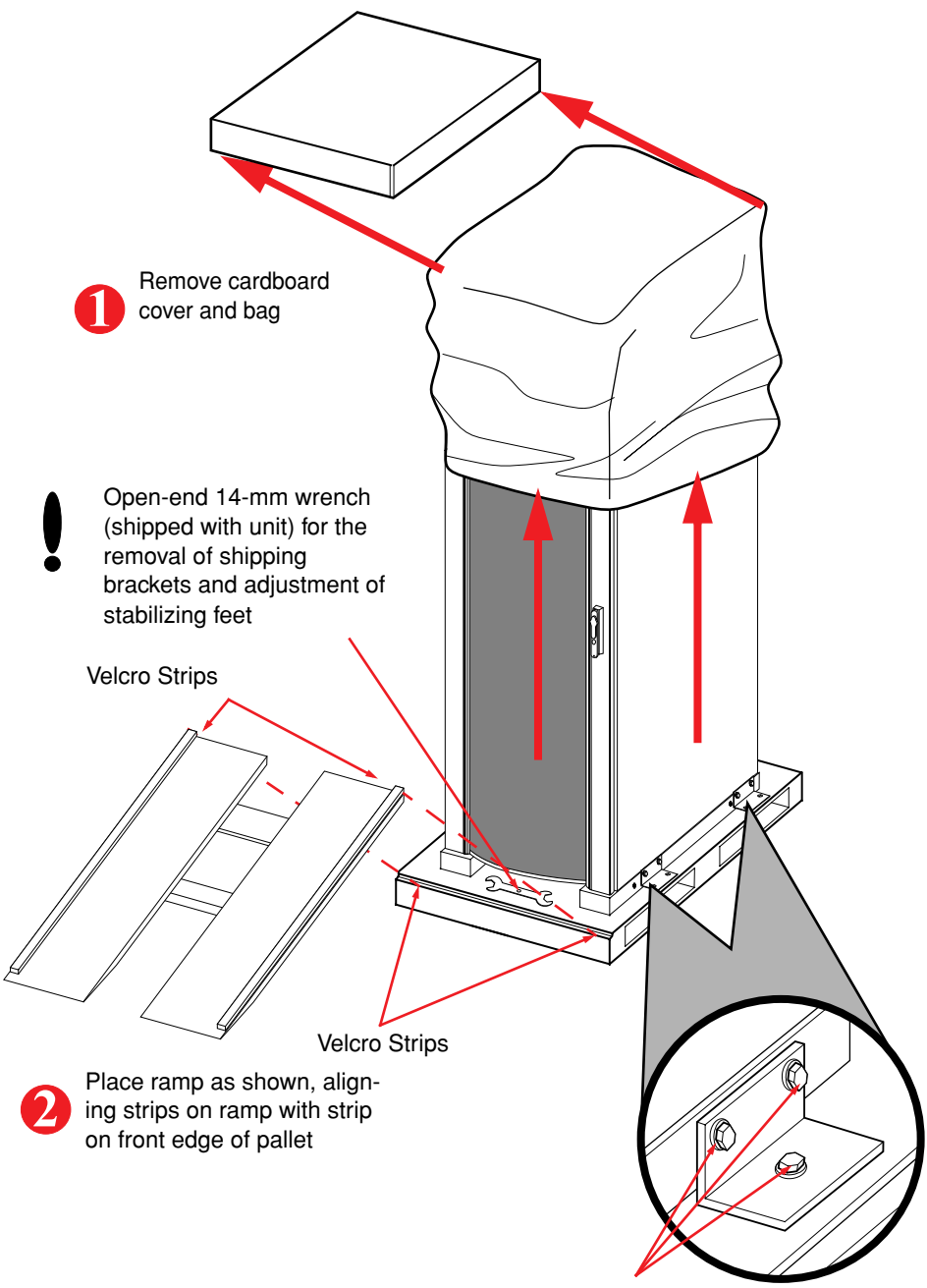


Figure 8

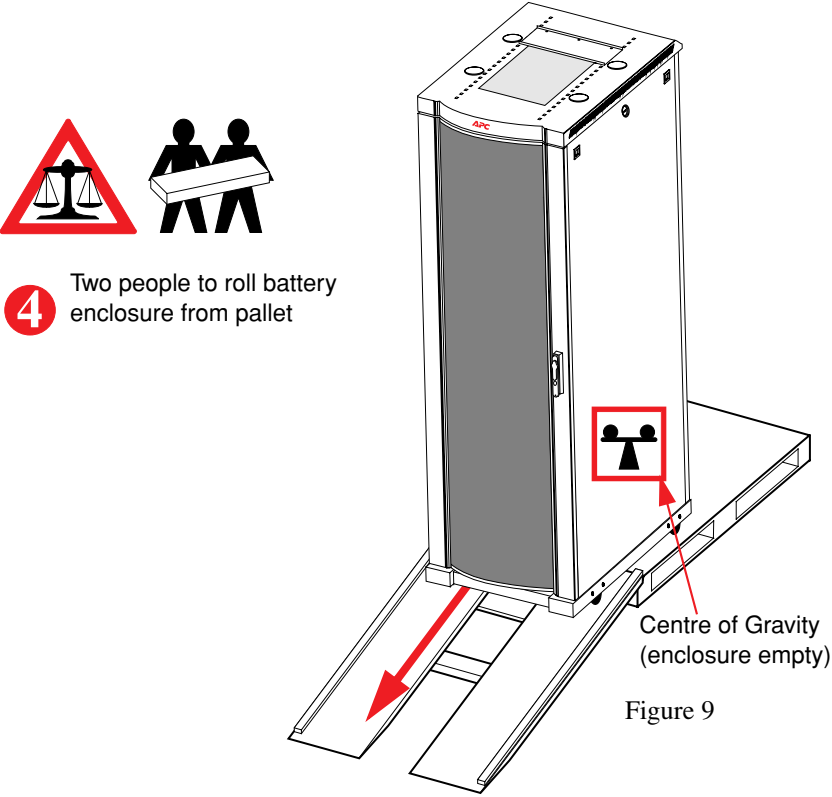


Figure 9

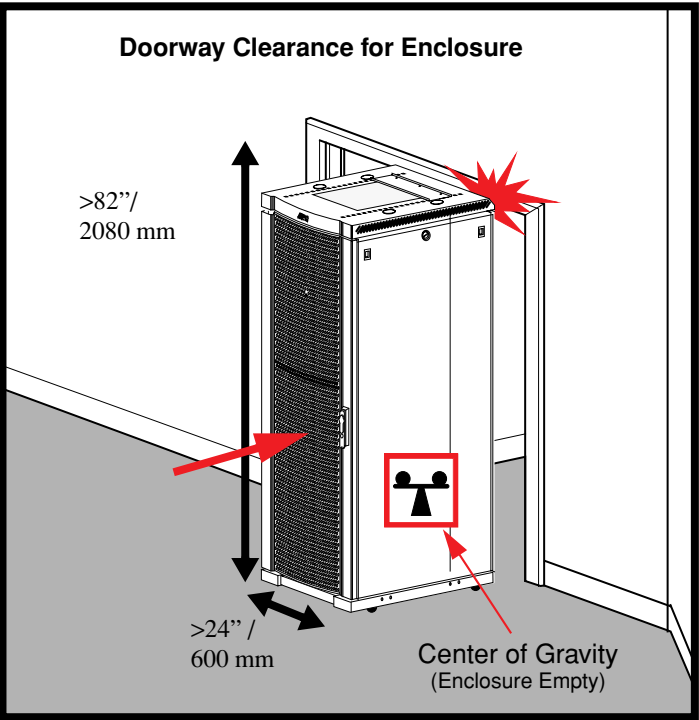


Figure 10



# 5 Operating Space

**CAUTION!** The XR Battery Enclosure is heavy (550 lb./250 kg) in maximum configuration. Ensure that the floor and sub-floor can support the total weight of the configuration when concentrated on the stabilizing feet.

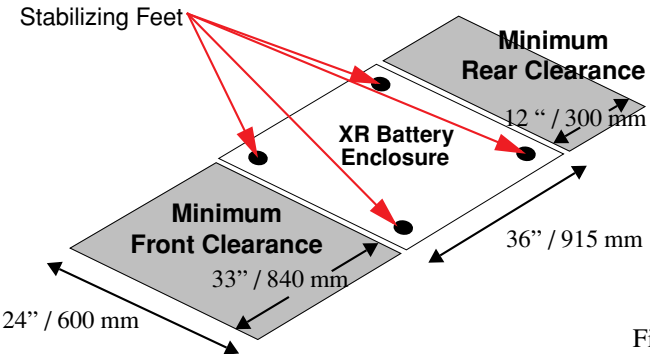


Figure 11

**!** Proceed to the Electrical Installation Guide for the UPS. If you have purchased any options, refer to applicable guides

# 6 Operating Environment

INSTALL THE UPS IN AN INDOOR, CONTROLLED ENVIRONMENT				
Temperature Range: 32° - 104°F 0° - 40°C	Keep Ventilated Front-to-Rear Airflow	Relative Humidity: <95% Non-condensing	No Conductive Dust or Corrosive Fumes	Max. Elevation: 0-10,000 ft. 0-3,048 m
Full Load Loss at Nominal Mains: 12,682 BTU/hr / 3,716 Watts				

Figure 12

## Appendix A

Country	Tech Support	Country	Tech Support
Austria	0800 296480	Norway	800 11632
Belgium	0800 15063	Poland	0801 345917
Czech Republic	0800 102063	Portugal	800 853182
Denmark	800 18153	Russia	095 9167166
Finland	9800 13374	South Africa	011 4652583
France	0800 906483	Spain	900 953533
Germany	0800 1801227	Sweden	020 795419
Greece	00800 35312206	Switzerland	080055 6177
Hungary	0640 200262	Turkey	0800 2113305
Ireland	1800 702000	UK	0800 132990
Israel	1800 9452206	USA & North America	1 (800) 4272
Italy	800 874731	Other Countries	353 91 702055
Luxemburg	0800 2091	Fax	353 91 755275
Netherlands	0800 022 4655	eSupport	http://esupport.apcc.com