



Step into a new low-carbon and digital reality

EcoFit™ Circularity & Repairability Services

Greater sustainability

- Efficient use of natural resources by replacing active components
- Recycling of obsolete equipment
- Enabled energy efficiency monitoring

Improved efficiency

- Lifetime extension for existing switchboards
- Unleash the power of connectivity with smart sensors
- Reduced plant shutdown time from days to hours
- No change of cables and no civil work
- Improved safety of people and surrounding equipment

Resiliency with digital capabilities

- Continuous asset condition monitoring
- Remote operation ability
- Access to digital energy management solutions and connected service plans

Benefits

- Maximizing your resiliency, efficiency and safety while minimizing waste for the Planet
- Digitization giving access to energy management
- Enhanced process dependability
- Optimized maintenance service costs
- Spare parts availability to help your repairability program

Expert help from Schneider Electric

- Worldwide support with Schneider Electric's warranty
- Skilled installation and commissioning experts available locally
- Access to the expertise of a global leader in energy management solutions

se.com/ecofitselector

Life Is On

Schneider
Electric

Cradle to Cradle/All breaker types Withdrawable CB with EasyPact EXE MC cassette (Nex 17/Loose CB)

Original brand: all brands

EcoFit™ Life Extension Advanced for Electrical Distribution, a true extended life time

All breaker types

Compatible with all open Air Insulated Switchgear legacy and no legacy cubicles with minimum inside panel width ≥ 560 mm



EasyPact EXE Circuit Breaker



This solution consists in fitting a cradle inside an existing panel:

- It is particularly adapted for non Schneider Installed Base.
- **EcoFit™ Life Extension Advanced** solution with shutters and mechanical interlocks embedded.
- Only the fixed connections (between the cradle and existing busbar) are customized.
- No age condition of the existing equipment.
- Only the width of the existing panel has to be considered.

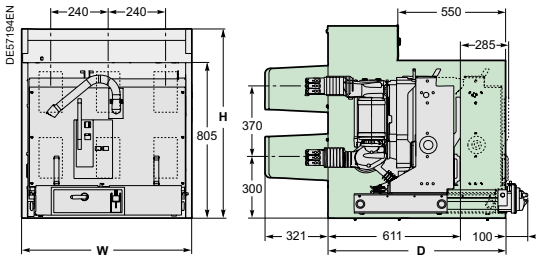
Main technical characteristics

All types	
Rated current (Ir)	630-1250 A
Short circuit current (Isc)	Up to 31.5 kA
Rated voltage Un (50/60 Hz)	7.2-12 kV

	MC1
Technology	Vacuum
Rated voltage Ur (kV)	7.2-12
Surge withstand voltage Up (kV)	60-75
Nominal frequency (Hz)	50-60
Rated current Ir (A)	630-1250
Short circuit current Isc (kA)	Up to 31.5
Short circuit duration Tk (s)	3

	MC1
Switching sequence	O-3 min-CO-3 min-CO O-0.3 s-CO-3 min-CO O-0.3 s-CO-15 s-CO
Closing time (ms)	< 65
Opening time (ms)	< 50
Number of switching operations	2.000 (for Isc= 40 kA class M1)-10 000
Service temperature (°C)	-25/+40

Cassette	MC1	
Phase to phase (mm)	E	145
Dimensions (mm)	W	556
	H	980
	D	1223
Weight (kg)	222	



Make the most of your equipment with available add-ons



Protection relays
PowerLogic, Sepam, MiCom, Arc Flash



PROTECTION

SUSTAINABILITY



EcoFit™ Recover
SF6, raw material recovery



TECHNOLOGY



Vacuum vs SF6, Oil, Air
Vacuum solutions may require overvoltage protections



Schneider Electric Industries SAS
35 rue Joseph Monier
92500 Rueil-Malmaison, France
Phone: + 00 (0) 1 41 29 70 00
www.se.com/services

Life Is On | **Schneider**
Electric