

Energy monitoring projects just get simpler

Introduce ease and efficiency to energy monitoring with Energy Server Com'X 200 and Energy Operation services



Schneider
Electric™



- > Do you need to focus on business development instead of issues, like complex device integration or network connection?
- > Are you looking for a simple, flexible and upgradable energy monitoring system for your customers?
- > Are you trying to convince your customers that energy monitoring has a good return on investment?

Grow your business in energy management

Benefit from the flexible combination of Energy Server Com'X 200
and a choice of energy management services for your customers



Protects and
supports your
business strategies

Business potential in an energy-challenged environment

Increasing governmental regulation and a rising public awareness of building energy efficiency have resulted in a growing demand for energy monitoring systems. Property owners, facility managers and building occupants are searching for user-friendly energy monitoring and analysis solutions which meet regulatory mandates and reduce energy bills without compromising comfort or productivity.

Although the energy management sector's growth potential is significant, complexity remains a barrier to easy adoption.

Traditionally, resolving complex device integration and transmission protocols increases execution time and in turn lowers project efficiency and profitability.

Schneider Electric introduces the Energy Server Com'X 200 with StruxureWare™ Energy Operation services to save time and effort in each stage of your installations in small and midsize buildings.

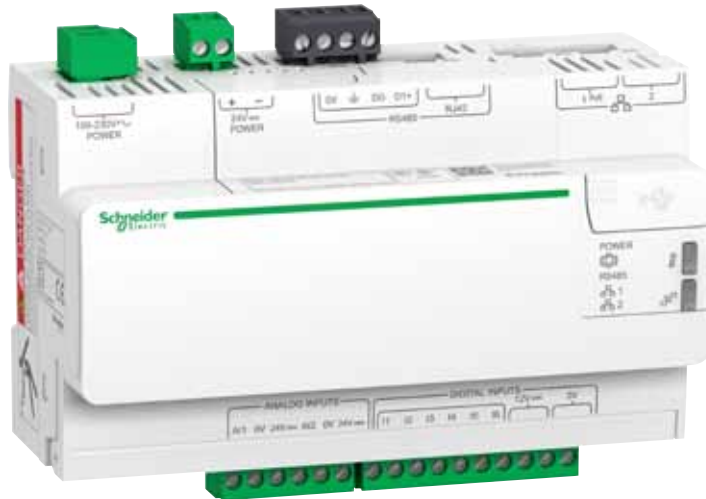
40%

energy use is
consumed by
buildings¹

¹ Energy Efficiency in Buildings, Business Realities and Opportunities, WBCSD, 2009

Energy Server Com'X 200 simplifies energy monitoring projects

A highly flexible, plug-and-play enhanced data logger to collect WAGES and environmental information, it reduces technical complexity in order to speed up deployment and cut costs.



Tested, validated and documented architectures by Schneider Electric

ONE device to streamline your workflow

Simple to design and choose

The Energy Server Com'X 200 is complete, feature-rich and best-in-class:

- > A wide range of upstream and downstream connectivity
- > Ethernet and Wi-Fi: leverage the building's existing infrastructure to reduce cost
- > GPRS-ready, especially for sites with no access to IT network
- > Flexible choice of power supply
- > Modular and scalable to diverse installation requirements
- > Third-party compatible

Simple to install, configure and commission

- > Straightforward installation, configuration and commissioning steps
- > Compliant to all electrical switchboard environment constraints
- > Intuitive web-based Human-Machine interface
- > Improved work comfort thanks to the Wi-Fi automatic connection between Com'X 200 and your notebook or tablet

Flexibility in selecting energy monitoring platforms

Depending on you and your customers' business strategy, you can provide the energy analysis and consulting services or delegate the task to Schneider Electric.

100%

Adaptable to your customer's needs

Energy Server Com'X 200 makes energy savings simple for your customers



up to
30%

Monitoring and control systems can reduce annual energy usage

ONE device to deliver customer satisfaction

Smart designs and services

The Energy Server Com'X 200 removes the complications of traditional data loggers to bring time-and-cost savings for your customers:

- Ergonomic and compact size: avoid costly switchboard modifications
- Modular, upgradable and scalable: pay only for what's needed now
- Compatible with most energy management platforms
- Data confidentiality thanks to Energy Operation services

Data visualisation for energy efficiency

The Energy Server Com'X 200 centralises WAGES meter readings for easier analysis. Along with an energy management information system, it gives your customers the data visualisation for controlling consumption patterns in order to achieve:

- Improved building's energy efficiency
- Reduced energy bills and waste
- Compliance with building regulatory standards
- Demonstrable commitment to the environment
- Efficiency in daily operations



A fully-integrated, secure cloud-based solution



Investment optimisation which is scalable to grow with your customers

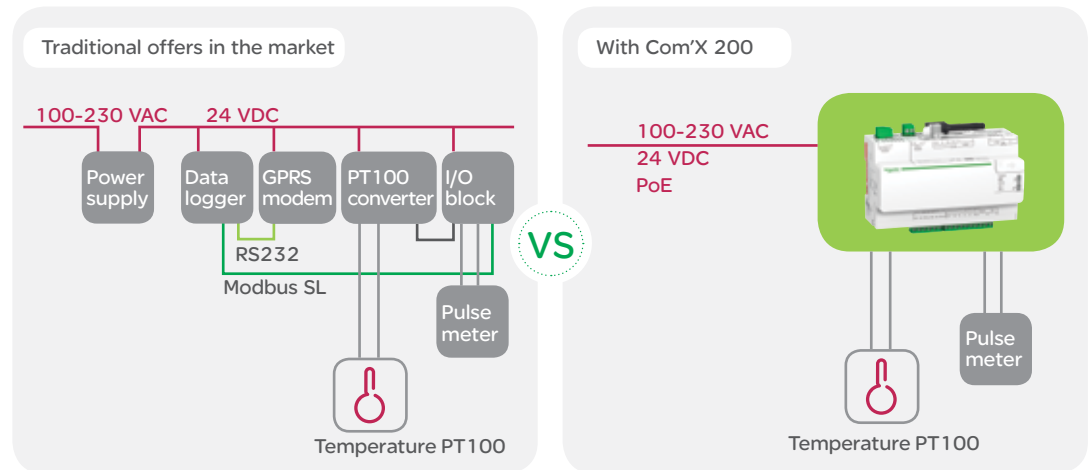
Less wiring and configuration for faster commissioning

Efficient deployment with Energy Server Com'X 200

Com'X 200 reduces the number of components to install and configure whilst retaining all the functionalities in just one device. In this example, Com'X 200 simplifies the architecture for an application where your customer wants to see the main electrical consumption and correlate it with the external environmental readings without having to contact the network manager.



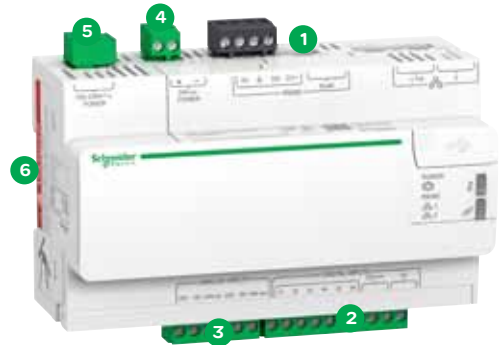
One device to install and configure, not five; three operations, not 11; one interface, not three



Simple to install

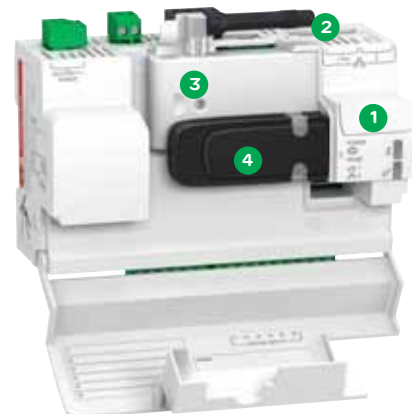
Ready for any WAGES meters and sensors

- 1 **Modbus** serial port links to any device
- 2 **6 digital inputs** for pulse meters and actuators status
- 3 **2 analog inputs** with a 24V sensor supply for any environmental sensors
- 4 **24 VDC** power supply
- 5 **100-230 VAC** power supply
- 6 **DIN Rail** installation



Ready to communicate

- 1 **USB host port** for memory stick or Wi-Fi dongle inputs
- 2 **2 Ethernet ports** for LAN connection and field network for devices both upstream and downstream connections
- 3 **GSM / GPRS** optional modem
- 4 **Wi-Fi** optional dongle*



* Option available from December 2013

GPRS + global cellular network contract

Avoid IT network access issues and easily connect to remote site

Simple , easy to configure, commission and troubleshoot

Effective Human-Machine interface

- > **LED Indicators:** power and boot status; pulse reception and status of each digital input (Wi-Fi, GPRS, Ethernet, and Modbus); Wi-Fi and GPRS modem signal level
- > **Label sheets** for quick identification of custom digital and analog inputs



Ready to connect

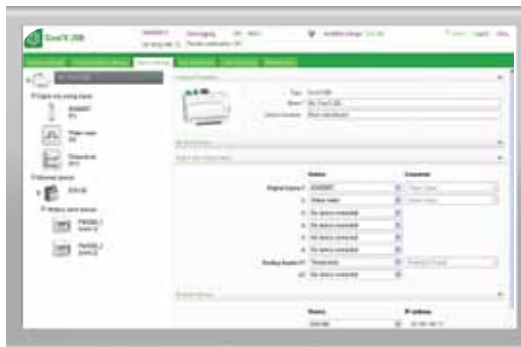
- > Direct Wi-Fi connection with your notebook or tablet
- > Automatic identification of Com'X 200 from your notebook or tablet
- > IP address setting and allocation mechanism
- > Automatic identification of connected meters and sensors



“ Configuration via Wi-Fi lets me work comfortably away from the utilities room ”

Intuitive configuration web pages

- > Task-oriented workflow
- > Device tree view representing installation architecture
- > One test dashboard to check data consistency at a glance
- > Commissioning page with issue synthesis and test



Less than 1 hour

to install, connect, test and commission²

Time-and-effort savers:

- > No need to bother network managers for downstream IP address allocation of downstream devices
- > Pre-configured parameters for Schneider Electric connected devices
- > No additional software needed for web-based configuration pages



² Based on previous data, 2012. This is not a guarantee of future performance or performance in your particular circumstances

Make energy data work for you

Energy Operation helps you and your customers make the best energy decisions

No restriction

Com'X 200 links to cloud-based SaaS, on-site or third party platforms

Energy Operation, a combination of software and services which identifies areas for continuous optimisation, is the affordable solution you can give your customer to help convert raw energy data into easily actionable energy efficiency initiatives and cost savings.

Open, scalable and secure cloud-based, Energy Operation centralises data from multiple sources to generate clear analyses which are tailored by experts from Schneider Electric to ensure the right information reaches the right person at the right time.



With Energy Operation, I can offer a comprehensive energy efficiency plan to my customers



From one to thousands of buildings, Energy Operation supports any energy portfolios

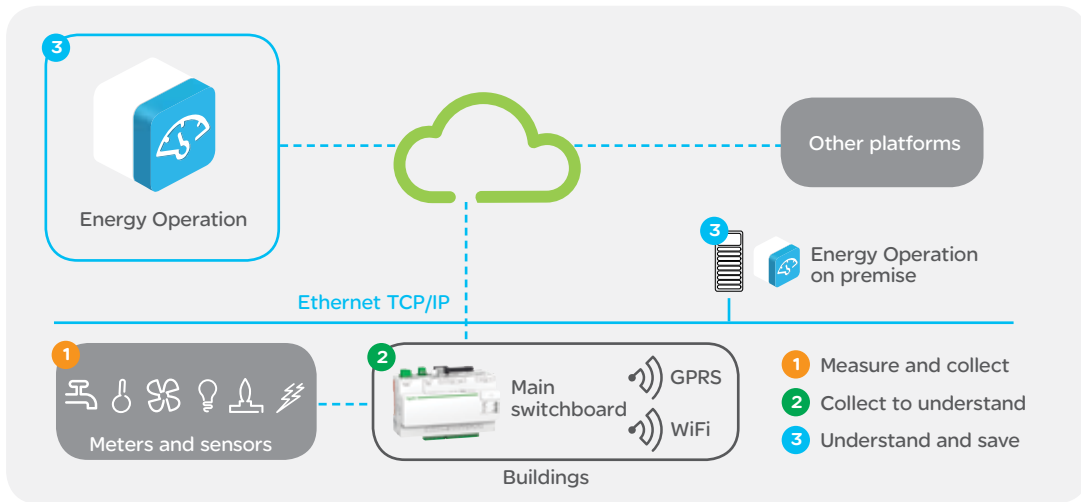
Energy Operation's benefits

Supports your business:

- > Lets you focus on business development
- > Provides an affordable energy management service to your customers

Energy Operation is easy to commission with Com'X 200

- > No settings of server, user or login
- > Safe and fast registration and connection
- > Automated transfer of measurements, related energy usage and site information
- > GPRS module with embedded SIM card for immediate cloud connection



Com'X 200 is an integral part of the 3-step energy management solution by Schneider Electric

Energy Operation's advantages for your customers

When deployed in tandem with Com'X 200, Energy Operation gives your customers control of their energy usage and enables them to implement continuous cost and energy optimisation initiatives.

Optimised energy savings

- > See where, when and how energy is used
- > Customised energy dashboards with targeted information
- > Validation of energy bills and comparison of site efficiency

Benefits of cloud-based services

- > No additional investment in data storage
- > Access to information from anywhere
- > Data security assured by best practices

A cost-effective service

- > Affordable annual fee
- > No additional cost for in-house energy analysts

Measureable environmental commitment

- > Reduce environmental footprint
- > Compliance with government regulations
- > Improve public image and enhance social responsibility

Customers' peace of mind

with Energy Operation energy and device management services

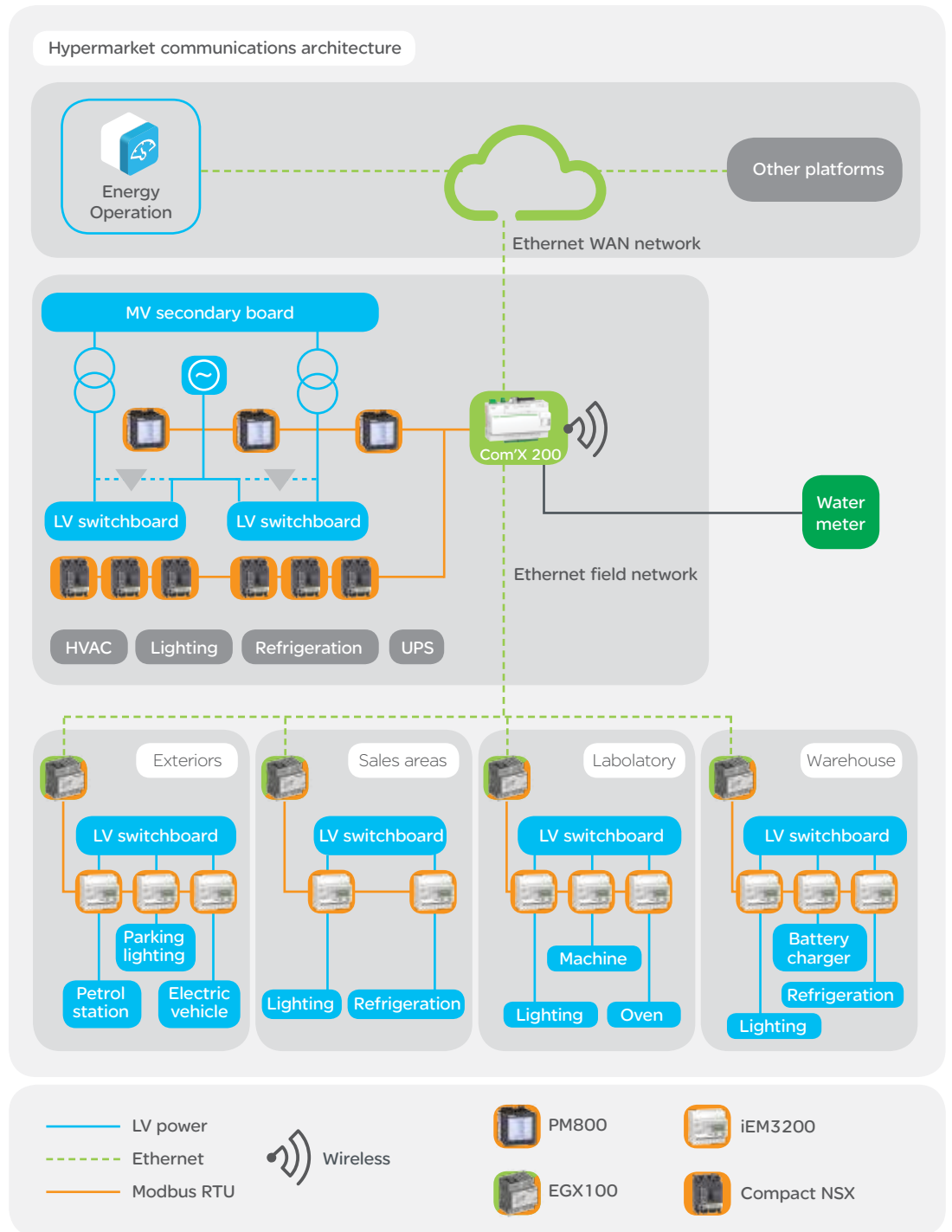
Flexibility with the Energy Server Com'X 200

The Energy Server Com'X 200 can be easily configured to export energy data in CSV files, free for you to choose the optimal energy monitoring system for your customers. Configure the schedule and export format (HTTP, FTP, or email) that your customer requires.

SaaS-enabled

Software as a Service means pay only for what you use

Com'X 200 application in a commercial centre



TVD architecture
Tested, validated and
documented by
Schneider Electric



Download the
FREE 'Designing a
metering system for
small and medium-
sized buildings'
white paper from
www.serply.com
and enter keycode:
XXXXXXX

Quality marks for Com'X 200





Com'X 200

is designed
for small footprint



UK contact details -

0870 608 8 608

Fax 0870 608 8 606

Ireland contact details -

01 601 2200

Fax 01 601 2201

As the global specialist in energy management with operations in more than 100 countries, Schneider Electric offers integrated solutions across multiple market segments, including leadership positions in energy and infrastructure, industrial processes, building automation and data centres/networks, as well as a broad presence in residential applications.

Schneider Electric is dedicated to making individuals' and organisations' energy safe, reliable, efficient, productive and green from Power Plant to Plug™.

We are changing our brand names and becoming one Schneider Electric. You'll get the same great quality products, but from one name you can remember and trust. This provides you and your customers with the reassurance associated with Schneider Electric.

Some of our market leading brands have already become Schneider Electric including **Merlin Gerin, Telemecanique, Square D, GET, Mita, Sarel, Himel, Thorsman, Tower and TAC.**

Working as one Schneider Electric makes it clearer that our ranges are highly compatible for integrated solutions.

Schneider Electric Ltd

United Kingdom
Stafford Park 5,
Telford
Shropshire
TF3 3BL
Tel: 0870 608 8 608
Fax: 0870 608 8 606
www.schneider-electric.com/uk

Ireland
Head office,
Block a
Maynooth Business Campus
Maynooth, Co. Kildare
Tel: (01) 601 2200
Fax: (01) 601 2201
www.schneider-electric.com/ie

Schneider Electric Limited is a company registered in England and Wales.
Registered number: 1407228. Registered office: Stafford Park 5, Telford, Shropshire TF3 3BL.

©2013 Schneider Electric Industries SAS, All Rights Reserved. Schneider Electric, Make the most of your energy, are owned by Schneider Electric, or its affiliated companies. All other trademarks are property of their respective owners. • 998-1195103_GMA-GB

As standards, specifications and designs change from time to time, please ask for confirmation of the information given in this publication.

member of

