



Get actionable insights to help improve safety, resiliency and efficiency of your assets and systems, and process uptime

## EcoConsult Audit Advanced+ for Power

### How do we help you prevent safety risks and downtime?

EcoConsult Audit Advanced+ is a non-intrusive assessment of the Customer's process supply in its power system. It is performed by Schneider Electric Services personnel. The aim of the offer is to assess and provide:

- Conditions of the equipment;
- Risks to safety and electrical distribution operations;
- Recommendations to manage the risks and optimize performance;
- Process sensitivity and financial impact to power system failure;
- Mapping of sensible processes in the site power system;
- Identify single point of failure and power system resiliency status;
- Plan to help improve availability and uptime;
- Asset criticality index mapping;
- Technical documentation review (single line diagram, procedures);
- Management plan (spare parts and workforce empowerment;
- Detailed maintenance and modernization multi-year plan; and
- Digital transformation roadmap within a monitoring plan.

### Benefits

EcoConsult Audit Advanced+ helps you:

- Identify areas of risk
- Improve safety and resiliency of your Electrical Distribution system
- Improve process uptime, supply redundancy and limit impact of a downtime
- Provide a roadmap for maintenance and modernization activities
- Initiate your digital transformation
- Assess staff training requirement
- Evaluate spare parts needs
- Survey the environment of electrical substations
- Prioritize actions based on risks on safety and financial impact

[se.com/ecoconsult](https://se.com/ecoconsult)

Life Is On

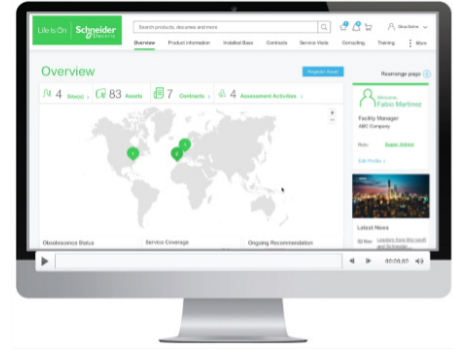
**Schneider**  
Electric

# Your EcoConsult Audit Advanced+ for Power journey:



Starting from an assessment of your asset and system stress combined with a mapping of your process within your power system, our consultant will pave your journey towards:

- Safety of your operators, assets and systems;
- Modernization of your asset and power system architecture;
- Recommended maintenance practices over 10 years;
- Staff competency review and workforce empowerment;
- Spare parts requirements;
- Technical documentation review (single line diagram, procedure, studies,...); and
- Digital transformation roadmap.



mySchneider portal

The offer is supported by mySchneider portal to enhance your digital consulting experience. mySchneider platform enables you to access to assessment deliverables, recommendation workflow, asset lifecycle status and more.

## EcoConsult Audit for Power portfolio:

	Essential	Advanced	Advanced +
<b>Area of Focus</b>	Asset 	Assets in your power system 	Site processes in your power system 
<b>mySchneider digital platform</b> containing assessment deliverables, installed base lifecycle status, recommendations workflow	✓	✓	✓
<b>Installed base tracking &amp; obsolescence</b>	✓	✓	✓
<b>Risks and safety findings</b>	✓	✓	✓
<b>Assets stress assessment</b>		✓	✓
<b>Modernization plan</b> (asset and power system architecture)		✓	✓
<b>Digital transformation plan</b>		✓	✓
<b>Maintenance plan</b> (10-years)		✓	✓
<b>Technical documentation review</b> (single line diagram, procedure,...)		✓	✓
<b>Management plan</b> (spare parts, staff competency review,...)		✓	✓
<b>Site Process and Downtime Financial Impact Assessment</b>			✓
<b>Site Process Mapping with Power System</b>			✓
<b>Assets &amp; systems reliability assessment</b>			✓
<b>Assets criticality definition</b>			✓

[se.com/ecoconsult](https://se.com/ecoconsult)

Life Is On

Schneider Electric

Schneider Electric 35 rue Joseph  
Monier 92500 Reuil-Malmaison, France  
Tel: +33 (0)1 41 29 70 00