

Odace - Connected Universal Rotary Dimmer LED

Device user guide

Information about features and functionality of the device.

04/2024



Legal Information

The information provided in this document contains general descriptions, technical characteristics and/or recommendations related to products/solutions.

This document is not intended as a substitute for a detailed study or operational and site-specific development or schematic plan. It is not to be used for determining suitability or reliability of the products/solutions for specific user applications. It is the duty of any such user to perform or have any professional expert of its choice (integrator, specifier or the like) perform the appropriate and comprehensive risk analysis, evaluation and testing of the products/solutions with respect to the relevant specific application or use thereof.

The Schneider Electric brand and any trademarks of Schneider Electric SE and its subsidiaries referred to in this document are the property of Schneider Electric SE or its subsidiaries. All other brands may be trademarks of their respective owner.

This document and its content are protected under applicable copyright laws and provided for informative use only. No part of this document may be reproduced or transmitted in any form or by any means (electronic, mechanical, photocopying, recording, or otherwise), for any purpose, without the prior written permission of Schneider Electric.

Schneider Electric does not grant any right or license for commercial use of the document or its content, except for a non-exclusive and personal license to consult it on an "as is" basis.

Schneider Electric reserves the right to make changes or updates with respect to or in the content of this document or the format thereof, at any time without notice.

To the extent permitted by applicable law, no responsibility or liability is assumed by Schneider Electric and its subsidiaries for any errors or omissions in the informational content of this document, as well as any non-intended use or misuse of the content thereof.

Table of Contents

Safety Information.....	4
Odace - Connected Universal Rotary Dimmer LED	5
For your safety	5
About the device.....	6
Installing the device	6
Quick Home Connect.....	7
About Quick Home Connect.....	7
Pairing the device in Quick Home Connect	7
Operating a dimmer	9
Resetting the device in Quick Home Connect.....	10
LED indications in Quick Home Connect	10
Troubleshooting in Quick Home Connect.....	10
Pairing the device with Wiser Hub	11
Configuring the device	12
Setting the device location	14
Setting up the LED Indicator Behaviour	15
Setting up the Power On Behaviour.....	16
Using the device	17
Switching/Dimming the device manually	17
Adjusting the brightness level using app	18
Turning On/Off device using app	18
Schedule.....	19
Moments.....	21
Automation.....	24
Resetting the device	31
LED Indication.....	31
Troubleshooting	33
Technical Data	34

Safety Information

Important Information

Read these instructions carefully and look at the equipment to become familiar with the device before trying to install, operate, service, or maintain it. The following special messages may appear throughout this manual or on the equipment to warn of potential hazards or to call attention to information that clarifies or simplifies a procedure.



The addition of either symbol to a “Danger” or “Warning” safety label indicates that an electrical hazard exists which will result in personal injury if the instructions are not followed.



This is the safety alert symbol. It is used to alert you to potential personal injury hazards. Obey all safety messages that accompany this symbol to avoid possible injury or death.

DANGER

DANGER indicates a hazardous situation which, if not avoided, **will result in** death or serious injury.

Failure to follow these instructions will result in death or serious injury.

WARNING

WARNING indicates a hazardous situation which, if not avoided, **could result in** death or serious injury.

CAUTION

CAUTION indicates a hazardous situation which, if not avoided, **could result in** minor or moderate injury.

NOTICE

NOTICE is used to address practices not related to physical injury.

Odace - Connected Universal Rotary Dimmer LED



S5X0513W

For your safety

⚠ DANGER

HAZARD OF ELECTRIC SHOCK, EXPLOSION, OR ARC FLASH

Safe electrical installation must be carried out only by skilled professionals. Skilled professionals must prove profound knowledge in the following areas:

- Connecting to installation networks.
- Connecting several electrical devices.
- Laying electric cables.
- Safety standards, local wiring rules and regulations.

Failure to follow these instructions will result in death or serious injury.

⚠ DANGER

RISK OF FATAL INJURY FROM ELECTRIC SHOCK

The output may carry electric current even when the load is switched Off.

Disconnect the device from the supply by means of the fuse in the incoming circuit before working on the device.

Failure to follow these instructions will result in death or serious injury.

⚠ CAUTION

THE DEVICE MAY BE DAMAGED

Only connect dimmable load.

Failure to follow these instructions can result in injury or equipment damage.

About the device

The Connected Universal Rotary Dimmer LED (hereinafter referred to as **dimmer**) has a rotary knob that can be used to switch and dim ohmic, inductive or capacitive loads manually or remotely.

Control options

Home control: To control the dimmer through the Wiser app you will need the **Wiser Hub**.

Direct operation: The dimmer can always be controlled directly on-site. You can also connect any number of mechanical push buttons.

Functions

- The device can detect the load automatically
- It provides thermal protection, overload-resistance and short-circuit protection

Installing the device

Refer to the [installation instructions](#) supplied with this product.

Quick Home Connect

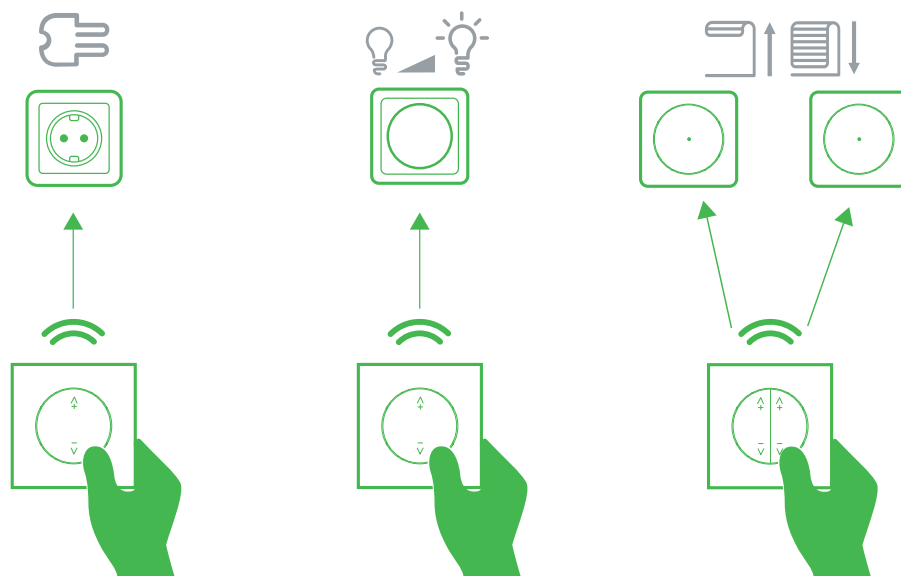
About Quick Home Connect

Quick Home Connect is your starting point for wireless home automation. It performs functions like switching, dimming and shutter control using a Connected Wireless Switch (hereinafter referred to as Wireless switch) via a Zigbee network.

IMPORTANT: Applicable only for products sold as a part of Quick Home Connect kits.

Quick Home Connect is a wireless connectivity solution for Zigbee devices without the need for a Hub or smartphone application.

The **Wireless switch** is a battery-powered wireless push-button switch that is used to control Zigbee devices (such as light or shutter) within the same Zigbee network.



Supported devices

- Connected Universal Rotary Dimmer (Rotary dimmer)
- Connected Blind Control Switch (Blind control)
- Connected Single Socket Outlet (Socket outlet)

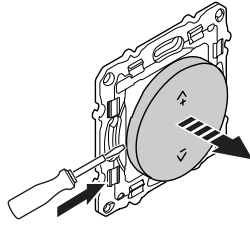
Pairing the device in Quick Home Connect

The Wireless switch can be paired with the supported devices in the list. Refer to Supported devices, page 7.

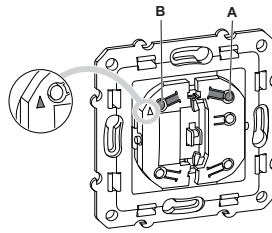
Preparing the devices:

It is necessary to prepare the devices before pairing. On certain devices the status LED is not directly visible.

1. Remove the rocker of the Wireless switch.

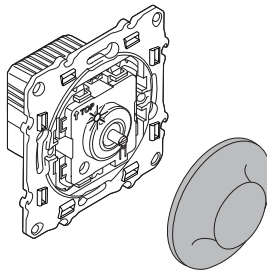


- Make sure the Wireless switch is aligned correctly to identify the pairing buttons.
 - 1-gang wireless switch: Pairing button **(A)**
 - 2-gang wireless switch: Pairing button for the right channel **(A)**
 - 2-gang wireless switch: Pairing button for the left channel **(B)**



NOTE: The Wireless switch is configured for 1-gang operation by default. To switch from 1-gang to 2-gang operation, refer to [Switching from 1-gang to 2-gang](#).

2. Remove the knob of the Rotary dimmer.



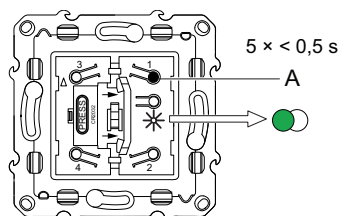
Pairing Wireless switch with Rotary dimmer

To pair the Wireless switch to the Rotary dimmer, you must put the Wireless switch and the Rotary dimmer into pairing mode.

NOTE: The pairing mode will be active for about a minute.

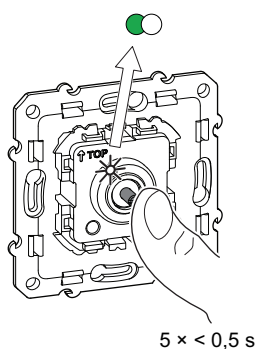
1. Short press the push-button (A) 5 times in quick succession on the Wireless switch.

The status LED blinks green.



- Short press the push button of the Rotary dimmer 5 times in quick succession.

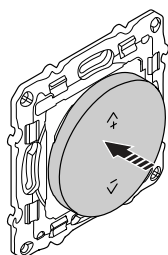
The status LED blinks green.



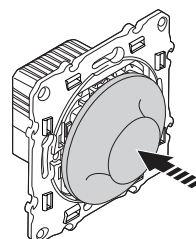
The light connected to the Rotary dimmer blinks for a few times. The status LED stops blinking green on the Wireless switch and the Rotary dimmer. The Rotary dimmer can now be controlled by the Wireless switch.

- Assemble the rocker (A) and rotary knob (B) on the Wireless switch (A) and the Rotary dimmer (B), respectively.

A



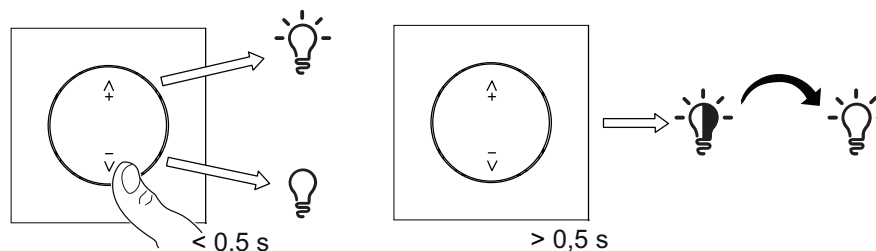
B



Operating a dimmer

You can switch the dimmer on/off or adjust its brightness using the Wireless switch.

- Short press the top (Λ+) or bottom (v-) Wireless switch (< 0,5 s) to turn On or Off the dimmer.
- Long press the top (Λ+) or bottom (v-) Wireless switch (> 0,5 s) to increase or decrease the brightness of the dimmer.



Resetting the device in Quick Home Connect

It is necessary to reset the devices in the following scenarios:

- Unpair the device in Quick Home Connect
 - Refer to [Resetting the Wireless switch](#).
 - Refer to [Resetting the Rotary dimmer](#), page 31.



When reset is done successfully. The **Wireless switch** and device returns to **factory default**.

NOTE: The defined shutter calibration will be deleted. For more information, refer to [Shutter calibration without app](#).

- Revert the **Wireless switch** from 2-gang to 1-gang operation.
- **Integrating into Wiser System**
 - If you wish to integrate the devices into Wiser System, reset all the devices in Quick Home Connect and refer to [Pairing the device with Wiser Hub](#), page 11.

LED indications in Quick Home Connect

Pairing the device in Quick Home Connect

User Action	LED Indication	Status
Press the push button 5 times in quick succession.	LED blinks green, once per second. 	Pairing mode is active for 60 seconds. When pairing is completed, LED stops blinking. 

Troubleshooting in Quick Home Connect

Symptom	Possible cause	Solution
LED displays amber in Rotary dimmer.	Pairing not completed and returned to factory reset.	Pair the Wireless switch and the device again. Refer to Pairing the Wireless switch with Rotary dimmer , page 8 .
Wireless switch not able to control the device reliably.	The Wireless switch and the device are too far away from each other.	Place the Wireless switch in a position closer to the device.
	The Wireless switch lost pairing or battery drained.	<ul style="list-style-type: none"> • Pair the device again. Refer to Pairing the Wireless switch with Rotary dimmer, page 8 . • Replace the battery of the Wireless switch.
	Pairing different devices like Rotary dimmer and Blind control to the same channel of the Wireless switch.	Reset the Wireless switch and pair the devices again with different channels. Refer to Reset the Wireless switch and Pairing the device in Quick Home Connect .

Scenario	Procedure
Central control of multiple devices with Wireless switch. (Applicable only for users with multiple Home Connect kits).	If you wish to have a centralized control with a single Wireless switch, first pair the central control Wireless switch with devices and then pair the other Wireless switch with the remaining devices.

Pairing the device with Wiser Hub

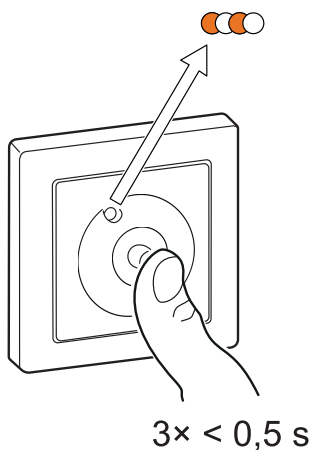
Using the Wiser Home app, pair your dimmer with the **Wiser Hub** to access and control the dimmer.

Follow the steps to pair the dimmer:

1. On the Home page, tap .
2. Tap **Devices** >  icon and **Lights** > **Rotary Dimmer** > **Next**.

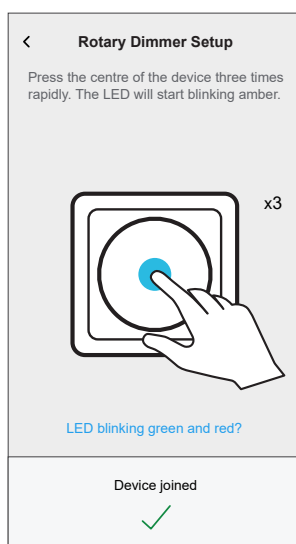
NOTE: The next screen shows the joining process of the dimmer.

3. Remove the knob and short-press the push button 3 times and make sure that the LED blinks amber.



4. Wait for a few seconds until the LED turns green. You can also see in the app that the device is joined.

NOTE: If the LED is blinking green and red, see the instructions by tapping the link **LED blinking green and red?**.




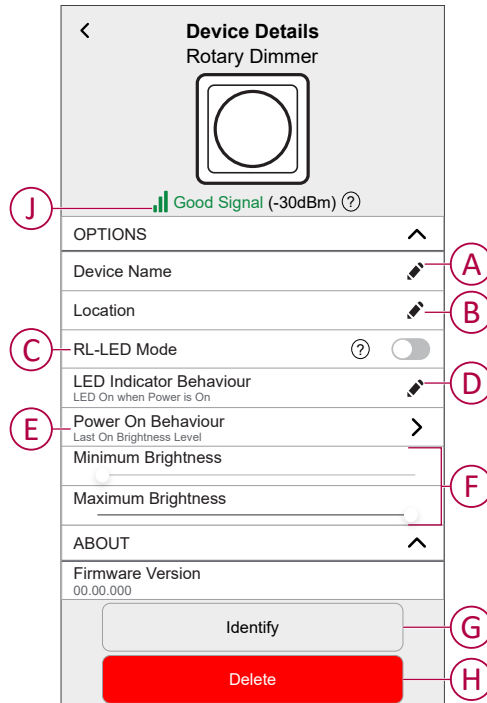
5. Tap **Next** to enter the name of the device and assign the device to a new room or an existing room.

The dimmer is now listed on the Home page under the **All** and **Room** tabs.





Configuring the device

Using the Wiser home app, you can configure the device according to your preferences.

1. On the Home page, tap .
2. Tap **Devices > Lights > Dimmer** to locate to the **Device Details** screen.





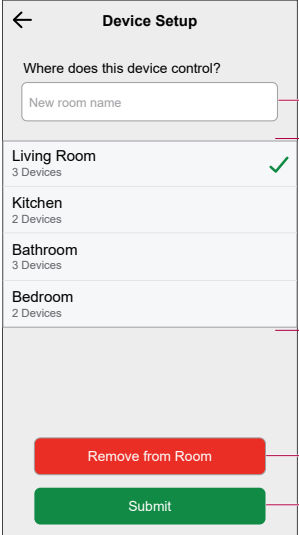
A	Device Name: Tap to change the name of the device.
B	Location: Tap to assign the Dimmer to any room (such as living room, bedroom, kitchen etc). Refer to Setting the device location , page 14 for more details on how to set the location.
C	RL-LED Mode: You can improve the dimming quality in the app if you have problems with light flickering. Tap the toggle switch to enable the RL-LED Mode . NOTE: Refer to Technical Data , page 34 for more information.
D	LED Indicator Behaviour: Tap to set the LED indicator behaviour of the dimmer as per your preference. Refer to Setting up the LED Indicator Behaviour , page 15 for detailed information on each options.
E	Power On Behaviour: Tap to set the default brightness level of the dimmer when it is turned on. Refer to Setting up the Power On Behaviour , page 16 for detailed information on each options.
F	Minimum Brightness and Maximum Brightness: This setting lets you set limits on the maximum and minimum brightness of the connected load. This is done to avoid flickering and switching off the LED. Drag the slider bar to increase or decrease the Minimum Brightness and Maximum Brightness .
G	Identify: Tap to identify the device. The status LED blinks red and connected lighting devices blinks On/Off, upon successful identification of the dimmer. Tap OK when you finish identifying the device.

H	Delete: Tap to remove the device from the system. NOTE: <ul style="list-style-type: none">• Removing the device will also reset the dimmer. After reset, the LED turns amber indicating that the dimmer is ready for pairing.• If there is a problem while pairing or resetting the dimmer, refer to .
J	Zigbee Signal Strength Indicator: Zigbee Signal Strength indicator which displays the current signal strength of the device. <ul style="list-style-type: none">•  Good Signal (between 0 & -54dBm)•  Normal Signal (between -54 & -79dBm)•  Poor Signal (<-79dBm)•  No Signal (device is offline)

Setting the device location

You can change the device location using Wiser Home app (such as bedroom, living room, dining room etc.).

1. On the Home page, tap .
2. Tap **Devices**, select the device from the list for which you wish to change the location.
3. Tap **Location**  to open setup page.
4. On setup page, you can enter **New room name** (A) or select an existing room from the list (B).




TIP: If the device is already assigned, you can remove it from the existing room. Tap **Remove from Room** (C).

5. Once changes are done, tap **Submit** (D).

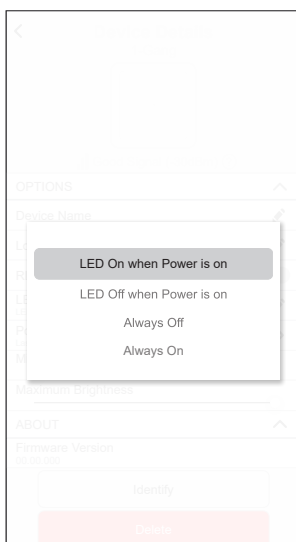
Setting up the LED Indicator Behaviour

Using the Wiser Home app, you can set the behaviour of the LED indicator on your device to identify the device status.

1. On the Home page, tap .
2. Tap **Devices > Lights**.
3. Select the device you want to update and tap **LED Indicator Behaviour**.

NOTE: If you are unable to find the option in your app, reset the device to factory default and perform the pairing process.


4. Select one of the following options as per your preference.



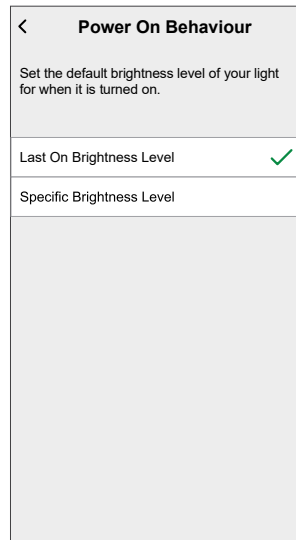
LED On when Power is on	The LED turns On when the device is On.
LED Off when Power is on	The LED turns Off when the device is On.
Always Off	The LED stays Off all the time.
Always On	The LED stays On all the time.

Setting up the Power On Behaviour

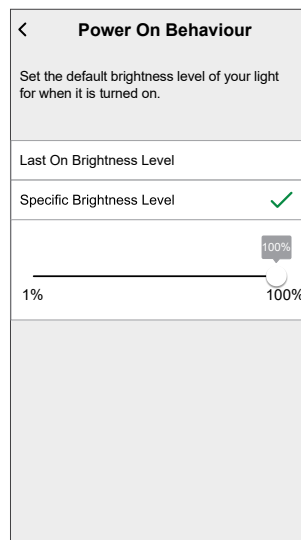
You can set the brightness level of your device when turned on.

1. On the Home page, tap .
 2. Tap **Devices > Lights**.
 3. Select the device you want to update and tap **Power On Behaviour**
- NOTE:** If you are unable to find this option in your app, reset the device to factory default and perform the pairing process.
4. Select one of the following options as per your preference:

Last On Brightness Level: The light turns on at the same brightness as when it was last turned off.



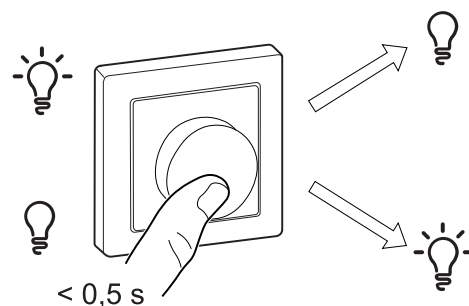
Specific Brightness Level: This option allows you to get the desired brightness level every time you turn on the light. Drag the slider bar to set the brightness.



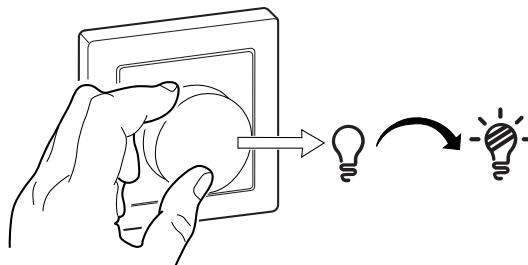
Using the device

Switching/Dimming the device manually

You can manually turn on/off the dimmer and increase/decrease brightness level. This will provide power to the load connected to it.
To turn on or off the dimmer, short-press the push button ($< 0,5$ s).




To increase brightness, turn the dimmer knob clockwise, and to decrease brightness, turn it anti-clockwise.

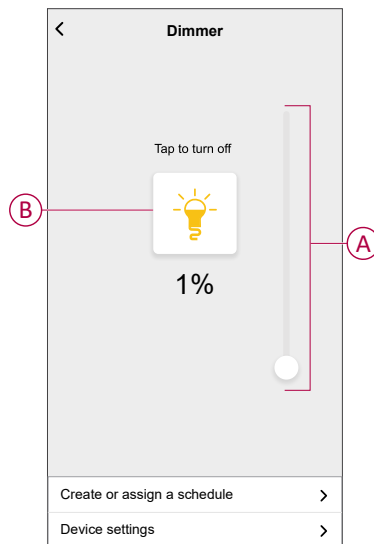


Adjusting the brightness level using app

By using the Wiser Home app, increase/decrease the brightness level in the dimmer.


1. On Home page, tap **All** and find the device.
2. On the control panel page, drag the sliding bar up/down to increase/decrease the brightness (A).

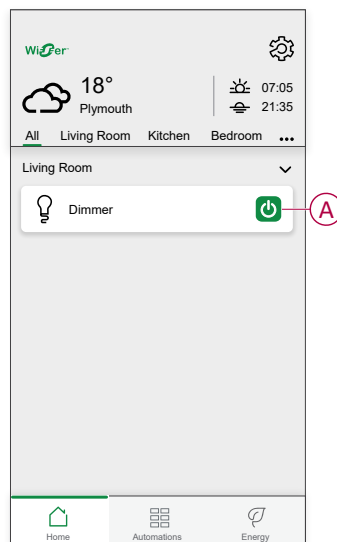
TIP: You can also turn On/Off the dimmer on the control panel page, tap  (B) to turn On/Off dimmer.



Turning On/Off device using app

Using the Wiser Home app, you can turn On/Off the dimmer remotely.

1. On the Home page, tap **All** and find the device.
2. Tap  (A) to turn On/Off dimmer.





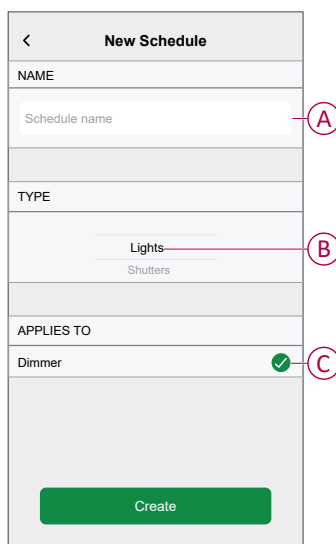
Schedule


You can set up schedules to specify the times at which a state of the device changes.

Setting up a schedule



The dimmer can be fully controlled by a schedule. Once the schedule is set, the dimmer operates at a given time.

1. On the **Home** page, tap .
2. Go to **Schedules** >  to create a schedule.
3. Enter the name of the schedule (A).
4. In the **TYPE** menu, select **Lights** (B).
5. In the **APPLIES TO** menu, select **Dimmer** (C) from the listed devices.
6. Tap **Create** to setup events.





7. Under **EVENTS** menu, select a day and then tap  to add an event such as **STATE** (lights Off or dimming level in %) and **WHEN** (sunrise/sunset or specific time range).
8. Tap **Set** to save the schedule.

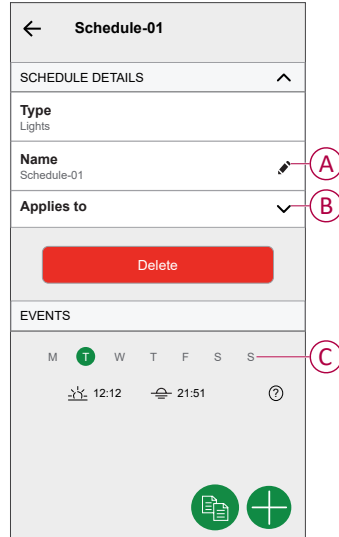
TIP:

- You can add multiple schedules based on your requirement. Select days, tap , set on/off state and time.
- You can copy the existing schedule to another schedule or to the days of your choice. Tap .
 - Tap **Schedule** and select an existing schedule and tap **Copy**.
 - Tap **Day** and select the days you want to assign and tap **Copy**.

Editing a schedule


1. On the Home page, tap  > **Schedules**
2. Tap the schedule you want to edit.

3. Tap the **SCHEDULE DETAILS** and you can do the following actions:
 - Rename the schedule (A).
 - Within the **Applies to** (B) menu, you have the option to select from the listed devices or deselect those that are already selected.
 - Under the **EVENTS** (C) menu, you can edit the day and then tap  to edit an event such as **STATE** (lights Off or dimming level in %) and **WHEN** (sunrise/sunset or specific time range).



NOTE: When the above changes are edited, the schedule is saved automatically.



Deleting a schedule


1. On the Home page, tap  > **Schedules**
2. Tap the schedule you want to delete.
3. Tap the **SCHEDULE DETAILS** and then tap **Delete**.

Moments

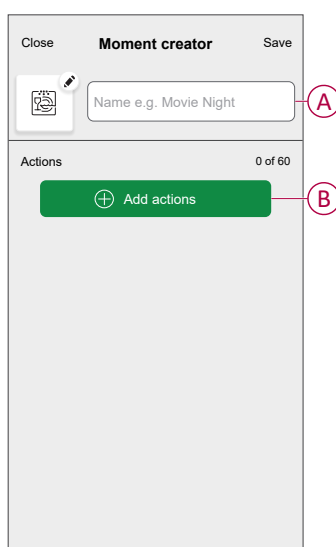
Moment allows you to group multiple actions that are usually performed together. By using the Wiser Home app, you can create moments based on your needs.

Creating a moment

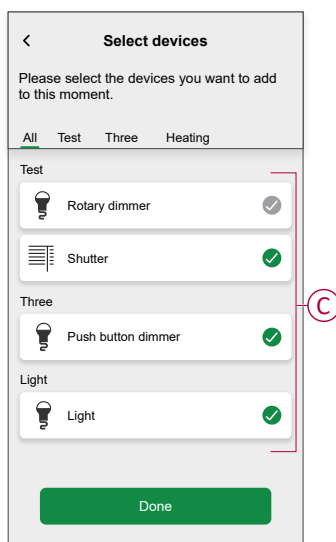
1. On the **Home** page, tap .
2. Go to **Moments** and then tap  to create a moment.
3. Enter the name of the moment (A).

TIP: You can choose the cover image that represents your moment by tapping .

4. Tap **Add actions** (B) to select the list of devices.

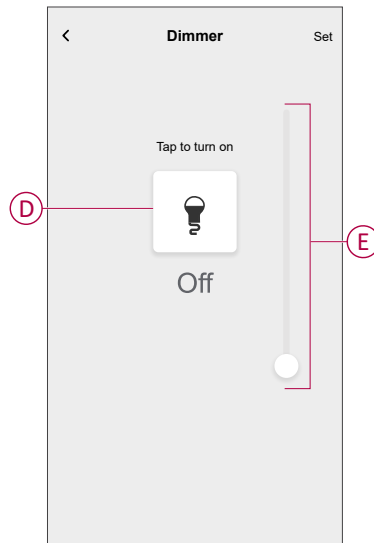


5. In the **Add actions** menu, you can select the devices (C).



6. Once the device are selected, tap **Done**.

7. On the **Moment creator** page, tap the device to set the condition. For example if it is a dimmer:
 - Tap to turn on (D)
 - Drag the sliding bar up/down to increase/decrease the brightness (E) and tap **Set** on the upper right corner.






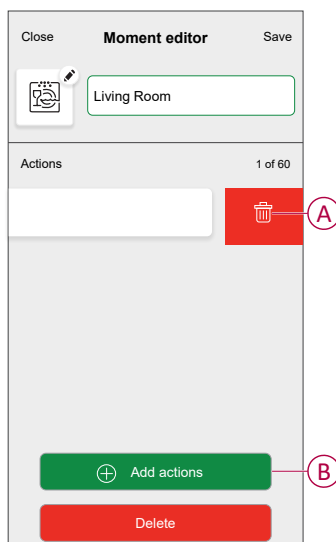
8. After setting all conditions, tap **Save**.
Once the moment is saved, it will appear on the **Moments** tab. Tap on the moment to enable it.

Editing a moment

1. On the **Home** page, tap .
2. Go to **Moments**, locate the moment you want to edit and tap .



3. On the **Moment editor** page, you can perform following changes:

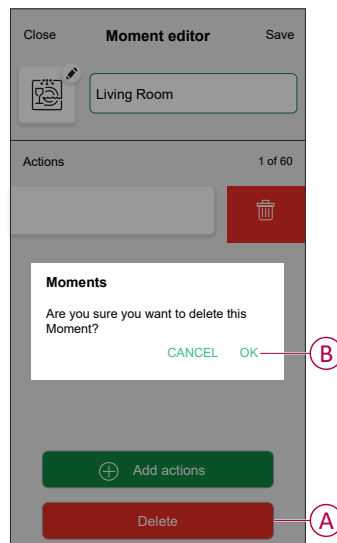
- Change the icon .
- Rename the moment.
- Tap each action to change the settings.
 - To remove an action, slide the action to the left and then tap  (A) to delete it.
 - Tap  **Add actions** (B) to add new action.



4. Tap **Save**, to save the changes.

Deleting a moment

1. On the **Home** page, tap .
2. Go to **Moments**, locate the moment you want to delete and tap .
3. On the Moment editor page, tap **Delete** (A) and then tap **Ok** (B).



Automation


An automation allows you to trigger an action automatically or at scheduled times. By using the Wiser Home app, you can create automations based on your needs. This example demonstrates how a device works when the condition is met.

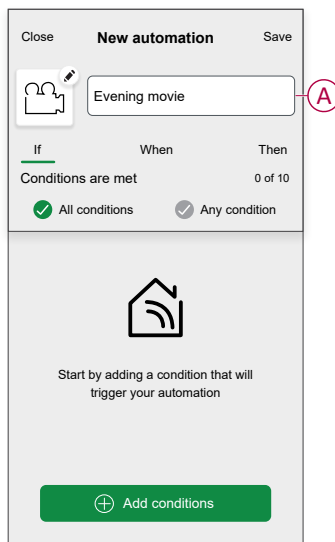
Creating an automation

1. On the **Home** page, tap .
2. Go to **Automation** and then tap  to create an automation.

3. Enter the name of the automation (A) and select any of the following conditions to trigger an automation.

- **All conditions:** All conditions must be met to trigger an automation.
- **Any condition:** Any one of the condition must be met to trigger an automation.

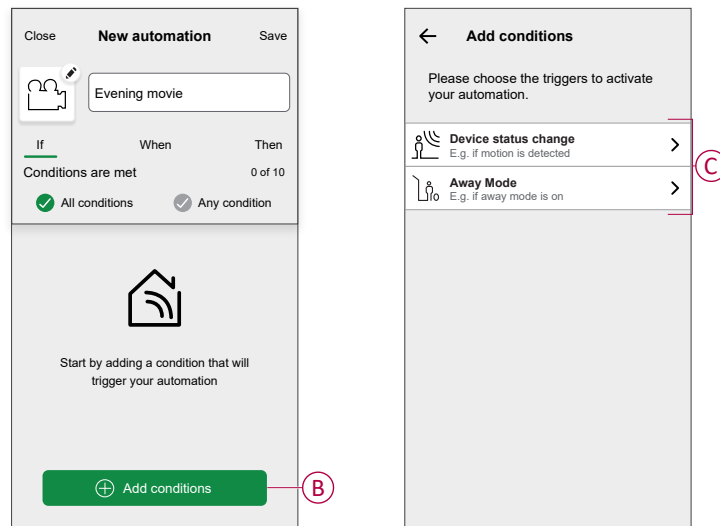
TIP: You can choose the cover image that represents your automation by tapping .



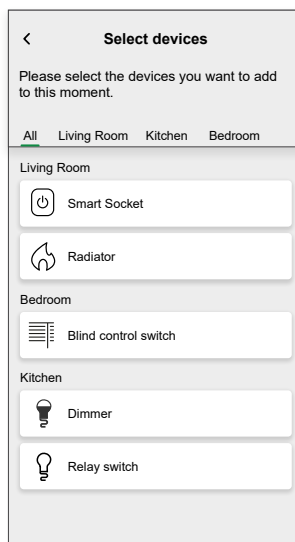
4. Tap **Add conditions** (B) and select any of the following (C).

- **Device status change** (Select the device): An automation will be triggered based on a device status, such as the opening of a shutter or the detection of movement by a motion sensor.
- **Away Mode** (Enable or Disable): Away mode can also trigger an automation to turn on the lights, close the shutter etc. For more information about **Away Mode**, refer to the system user guide.

NOTE: Maximum 10 conditions can be added.



- a. In this example, we will select for **Device status change** and select a device to set the condition. Then, choose the state of the device that will trigger the automation, such as the On/Off state of a relay switch.



- b. Upon selecting the device, tap **Set** on the upper right corner.

TIP: If you want to change the condition, swipe it to the left and tap the bin icon. Then add a new condition with the required parameters.

5. To start your automation at a particular time, tap **When > Add time** and select any of the following (D):

NOTE: Maximum 10 time entries can be added.

- **Specific time of day** - The automation will trigger at a specific time of the day, such as at sunrise, sunset, or at 8:00 AM.
- **Period of time** - The automation will be trigger during time periods such as from sunrise to sunset, or sunset to sunrise, or from 8:00 AM to 5:00 PM.

Close New automation Save

e.g. Good Morning

If When Then

At this time 0 of 10

Start your automation at a specific time of day or define a period of time.

+ Add time

← Add time

Specific time of day
E.g. at 07:00 or at sunrise

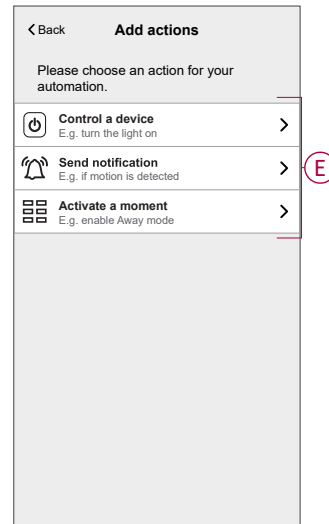
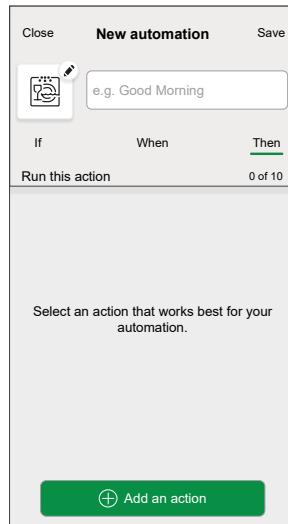
Period of time
E.g. from sunset to sunrise

D

6. To add an action, tap **Then > Add an action** and select any of the following (E):

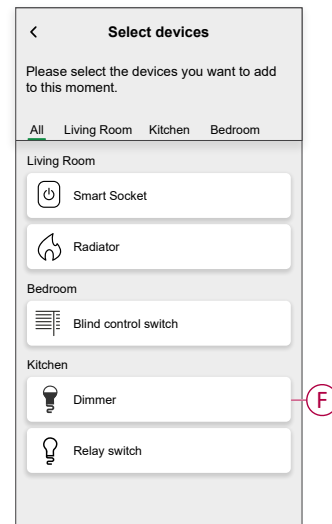
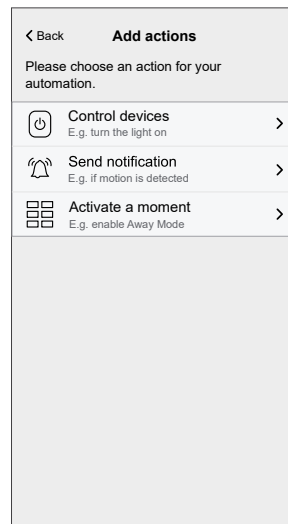
NOTE: Maximum 10 actions can be added.

- **Control a device** - Select the device and set the desired state of the device.
- **Send notification** - You will be notified if the condition is met.
- **Activate a moment** - Select a Moment.

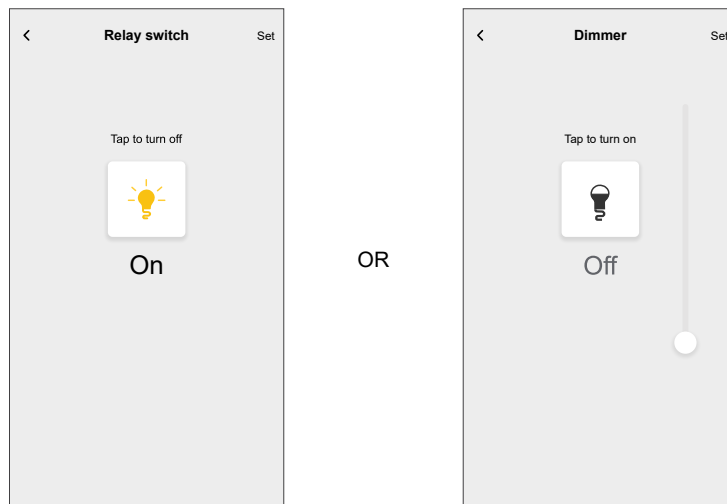


- a. In this example, we will select for **Control a device** and choose **Dimmer** (F) as the device to trigger an action.

IMPORTANT: You cannot select the same device that you selected for **Add conditions** in Step 4. The device should be different for the options **Add conditions** and **Control a device**.

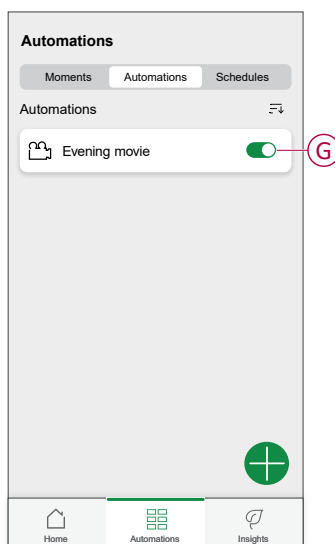


- b. Set the state, such as increase/decrease the dimmer brightness or switching the dimmer On/Off. Then, tap **Set** located on the upper right corner.




7. Tap **Save**.



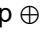
The saved Automation is displayed on the **Automation** page. Tap the toggle switch (G) on the Automation page to enable/disable the Automation.

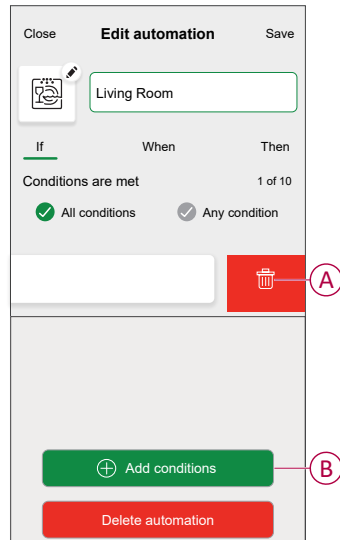


Editing an automation

1. On the **Home** page, tap .
2. Go to **Automation**, tap the automation you want to edit.


3. On the **Edit automation** page, you can perform following changes:

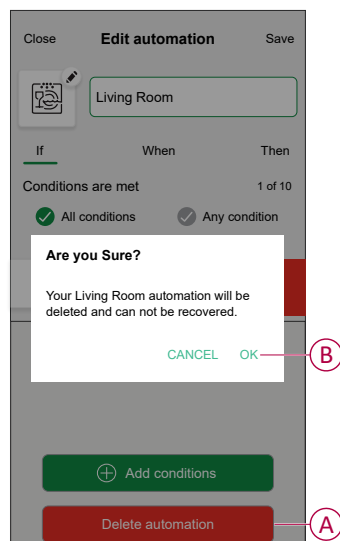
- Change the icon .
- Rename the automation.
- Tap each condition to change the settings.
 - To remove a condition, slide the condition towards left and then tap  (A) to delete it.
 - Tap  **Add conditions** (B) to add new condition.



4. Tap **Save** , to save the changes.

Deleting an automation

1. On the **Home** page, tap .
2. Go to **Automation**, tap the automation you want to delete.
3. On the **Edit automation** page, tap **Delete automation** (A) and read the confirmation message and then tap **OK** (B).



Resetting the device

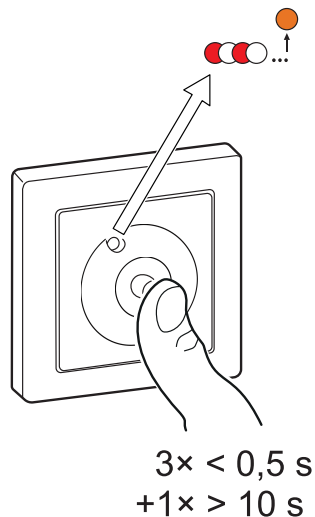
You can reset the dimmer to factory default manually.

Remove the knob and short-press the push button 3 times (<0.5 s) and then long-press the push button once (>10 s).

The LED blinks red after 10 s, and then release the push button.

Upon successful reset, the LED stops blinking. Then, the dimmer restarts and blinks green for a few seconds.

NOTE: After reset, the LED turns amber indicating that it is ready for pairing.



LED Indication

Pairing

User Action	LED Indication	Status
Press the push button 3 times	LED blinks amber per second. 	Pairing mode is active for 30 seconds. When pairing is completed, LED glows green for some time before turning Off.


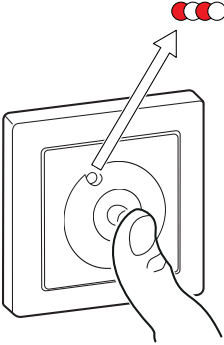
Resetting

User Action	LED Indication	Status
Press the push button 3 times and hold it down once for > 10 s.	After 10 s, the LED blinks red. 	The device is in reset mode. It is reset to the factory settings after 10 seconds. The device then restarts and the LED blinks green for a few seconds and then stays amber.

Identifying the device

LED Indication	Status
The LED blinks red. 	The connected lighting devices blinks On/Off, upon successful identification of the dimmer








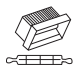

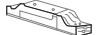

Different connectivity mode

LED Indication	Status
<p data-bbox="134 232 539 257">The LED blinks green and red while paring.</p> 	<p data-bbox="799 232 1422 302">The device is trying to connect to other connectivity mode. Short-press the push button 3 times and then hold for 20 seconds. When the LED blinks red rapidly, release the push button.</p>  <p data-bbox="906 707 1066 775">$3 \times < 0,5 \text{ s}$ $+ 1 \times > 20 \text{ s}$</p>

Troubleshooting

Symptom	Solution
Dimming up not possible.	<ul style="list-style-type: none"> Reduce/increase load. Allow the Dimmer to cool in case of overheating. Change the load (if the load is incompatible with the Dimmer).
Switching On not possible.	<ul style="list-style-type: none"> Allow the Dimmer to cool in case of overheating. Reduce load. Change load. Check wiring between the push button and the Dimmer.
Flickering at minimum brightness.	<ul style="list-style-type: none"> Increase minimum brightness (if flickering still persists, install a 31LCDA load correction device). Change the load (if the minimum brightness is insufficient). Set to RL LED mode, page 12.
Flickering	<ul style="list-style-type: none"> Change load. Set to RL LED mode, page 12. Change the brightness settings.
Only slight dimming capability	<ul style="list-style-type: none"> Change dimming range. Set to RL LED mode., page 12 Change the load (if the load is incompatible with the Dimmer).
The device is not ready to pair after the device is removed from the app.	Reset to factory default settings, refer to Resetting the device , page 31.

Technical Data

Nominal voltage	AC 230 V ~, 50 Hz		
Nominal power	Load type	Load name	Load value
	 LED	LED	7–100 VA  RC 7–20 VA  RL
		Iron core transformer	14–150 VA  RL
		Incandescent lamp	14–200 W  R
		Halogen lamp	14–150 W  R
		Electronic step-down converter	14–150 VA  RC
Standby	Max 0.4 W		
Neutral conductor	Not required		
Connecting Terminals	Screw terminals for max. 2 x 2.5 mm ² , 0.5 Nm		
Extension unit	Single Push-button, unlimited number, max. 50 m		
Fuse protection	16 A circuit breaker		
Operating frequency	2405 - 2480 MHz		
Max. radio-frequency power transmitted	< 10 mW		
Communication protocol	Zigbee 3.0 certified		

Compliance

Compliance information for Green Premium products

Find and download comprehensive information about Green Premium products, including RoHS compliance and REACH declarations as well as Product Environmental Profile (PEP) and End-of-Life instructions (EOLi).

<https://checkaproduct.se.com/>



General information about Green Premium products

Click the link below to read about Schneider Electric's Green Premium product strategy.

<https://www.schneider-electric.com/en/work/support/green-premium/>



EU Declaration of Conformity

Hereby, Schneider Electric Industries, declares that this product is in compliance with the essential requirements and other relevant provisions of RADIO DIRECTIVE 2014/53/EU. Declaration of conformity can be downloaded on se.com/docs.

Trademarks

This guide makes reference to system and brand names that are trademarks of their relevant owners.

- Zigbee® is a registered trademark of the Connectivity Standards Alliance.
- Apple® and App Store® are brand names or registered trademarks of Apple Inc.
- Google Play™ Store and Android™ are brand names or registered trademarks of Google Inc.
- Wi-Fi® is a registered trademark of Wi-Fi Alliance®.
- Wiser™ is a trademark and the property of Schneider Electric, its subsidiaries and affiliated companies.
- Amazon Alexa™ is a trademark of AMAZON TECHNOLOGIES, INC.

- Google Home™ is a trademark of Google INC.
 - Airzone is a trademark of Equip Outdoor Technologies UK Limited.
 - Aidoo is a trademark of CORPORACIÓN EMPRESARIAL ALTRA S.L. company.
- Other brands and registered trademarks are the property of their respective owners.

Schneider Electric
35 rue Joseph Monier
92500 Rueil Malmaison
France

+ 33 (0) 1 41 29 70 00

www.se.com

As standards, specifications, and design change from time to time,
please ask for confirmation of the information given in this publication.

© 2023 – 2024 Schneider Electric. All rights reserved.

DUG_Odace Rotary Dimmer_WH-02