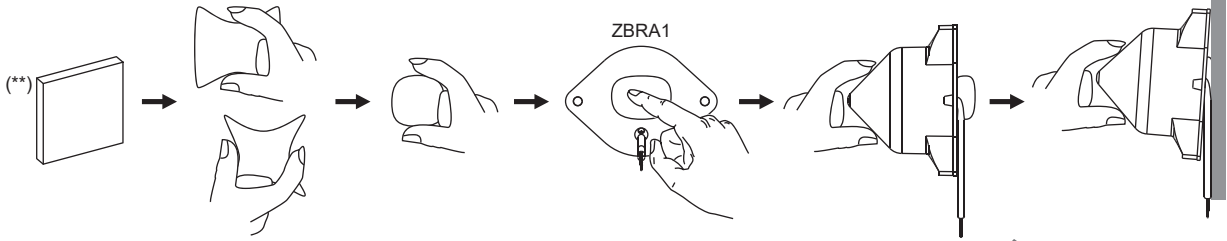




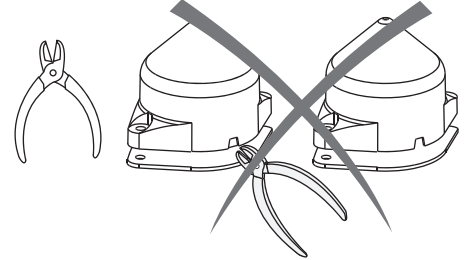
**A Temporary assembly for locating the best reception/transmission position**

Montage temporaire pour trouver la meilleure position de réception/émission  
 Temporäre Montage zur Ermittlung der besten Position für Empfang/Übertragung  
 Montaje temporal para localizar la mejor posición de recepción y transmisión



(\*\*) Paste for temporary mounting / Pâte pour fixation temporaire  
 Paste für temporäre Befestigung / Péguelo si desea fijarlo temporalmente

**NOTE / NOTE / HINWEIS / NOTA:**  
 For temporary assembly, the breakable part of the hood must not be cut off.  
 Pour le montage temporaire, la partie défonçable du capot ne doit pas être coupée.  
 Bei der vorläufigen Montage darf der abtrennbare Teil der Haube nicht abgetrennt werden.  
 Si el montaje es temporal, no corte la parte extraíble de la cubierta.

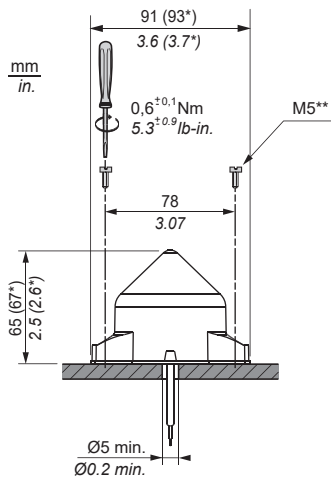


**B Definitive mounting**

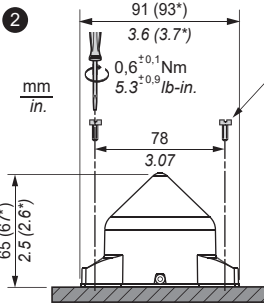
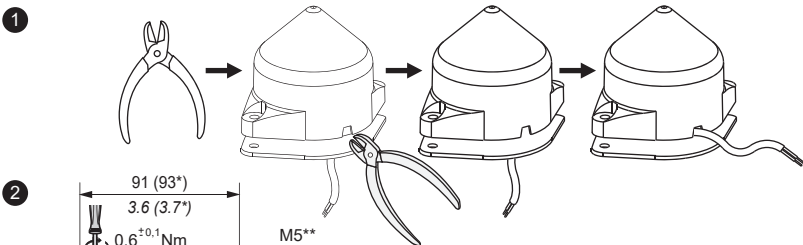
Montage définitif / Endgültige Montage / Montaje definitivo

**B1 Axial cable route / Passage de câble axial / Axialkabelweg / Ruta del cable axial**

Internal to enclosure use only /  
 Câblage interne au coffret seulement /  
 Nur für den internen Gebrauch innerhalb des  
 Gehäuses /  
 Solo para uso interno en recintos cerrados /



**B2 Radial cable route / Passage de câble radial / Radialkabelweg / Ruta del cable radial**



(\*): Dimensions including the gasket  
 Dimensions incluant le joint  
 Abmessungen inklusive Dichtung  
 Dimensiones con la junta incluida

(\*\*): Not supplied  
 Non fourni(es)  
 Nicht mitgeliefert  
 No incluido(s)

**WARNING / AVERTISSEMENT / WARNUNG / ADVERTENCIA**

**UNINTENDED EQUIPMENT OPERATION**  
 ● Do not use this equipment in safety critical machine functions.  
 ● Use appropriate safety interlocks where personnel and/or equipment hazards exist.  
 ● Install and operate this equipment in an appropriately rated environment.

**FONCTIONNEMENT INATTENDU DE L'EQUIPEMENT**  
 ● N'utilisez pas cet équipement pour des fonctions sensibles sur le plan de la sécurité.  
 ● Lorsque des risques de blessures corporelles ou de dommages matériels existent, utilisez des verrous de sécurité appropriés.  
 ● Installez et utilisez cet équipement dans un environnement adapté.

**UNBEABSICHTIGTER GERÄTEBETRIEB**  
 ● Setzen Sie das Gerät nicht für sicherheitskritische Maschinenfunktionen ein.  
 ● Verwenden Sie geeignete Sicherheitsperren, wenn eine Gefahr für Personal und/oder Geräte gegeben ist.  
 ● Installieren und betreiben Sie dieses Gerät in einer Umgebung, die den entsprechenden Anforderungen entspricht.

**OPERACION DEL EQUIPO INVOLUNTARIA**  
 ● No utilice este equipo en funciones de maquinaria críticas para la seguridad.  
 ● En caso de que exista riesgo para el personal o los equipos, utilice los dispositivos de bloqueo de seguridad adecuados.  
 ● Instale y utilice este equipo en un entorno con las características adecuadas.

**Failure to follow these instructions can result in death, serious injury, or equipment damage.**

**Le non-respect de ces instructions peut provoquer la mort, des blessures graves ou des dommages matériels.**

**Die Nichtbeachtung dieser Anweisungen kann zu Tod, schwerer Körperverletzung oder Materialschäden führen.**

**Si no se siguen estas instrucciones pueden producirse lesiones personales graves o mortales o daños en el equipo.**

- en** Electrical equipment should be installed, operated, serviced, and maintained only by qualified personnel. No responsibility is assumed by Schneider Electric for any consequences arising out of the use of this material.
- fr** Les équipements électriques doivent être installés, exploités et entretenus par un personnel qualifié. Schneider Electric décline toute responsabilité quant aux conséquences de l'utilisation de ce matériel.
- de** Elektrische Geräte dürfen nur von Fachpersonal installiert, betrieben, gewartet und instand gesetzt werden. Schneider Electric haftet nicht für Schäden, die aufgrund der Verwendung dieses Materials entstehen.
- es** Sólo el personal de servicio cualificado podrá instalar, utilizar, reparar y mantener el equipo eléctrico. Schneider Electric no asume las responsabilidades que pudieran surgir como consecuencia de la utilización de este material.



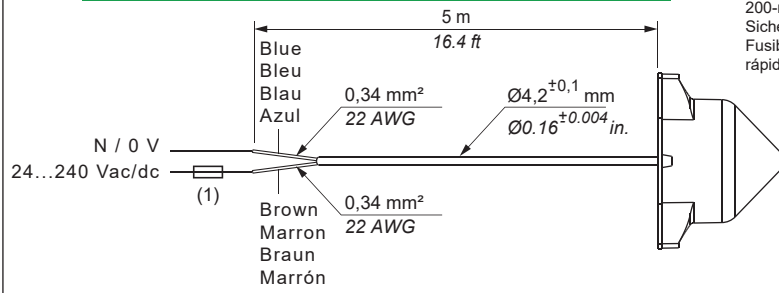
Scan this code to access the Cybersecurity Portal

**UK Representative:**  
 Schneider Electric Limited  
 Stafford Park 5  
 Telford, TF3 3BL, UK

**Уполномоченный поставщик в Республике Казахстан:**  
 ТОО «Шнейдер Электрик»  
 Адрес: 050010, РК, г. Алматы, пр. Достық,  
 38, бизнес центр «Кен дала», 5 этаж, левое крыло.  
 Тел. +7 727 339 23 57

**Қазақстан Республикасында ресми жеткізуші:**  
 ЖШС «Шнейдер Электрик»  
 Мекен-жайы: 050010, ҚР, Алматы қ., Достық даңғылы 38,  
 «Кен дала» бизнес орталығы, 5 қабат, сол қанат.  
 Тел. +7 727 339 23 57

**C Wiring diagram**  
Schéma de câblage / Verdrahtungsplan / Esquema de cableado



(1): 200 mA fuse from supplier Bussmann® reference GMA-200mA, 250 V 0.2 A fast-blow (100 mA fuse for 24 V 0.1 A) / Fusible 200 mA de Bussman® référence GMA - 200 mA, 250 V 0,2 A à action rapide (fusible 100 mA pour 24 V 0.1 A) / 200-mA-Sicherung von Anbieter Bussmann® Referenz GMA-200mA, 250 V 0,2 A flink (100 mA Sicherung für 24 V 0.1 A) / Fusible de 200 mA del fabricante Bussmann® con referencia GMA-200mA, 250 V y 0,2 A de acción rápida (Fusible de 100 mA para 24 V 0.1 A)

UL: Control of Overvoltage to be provided after main service disconnect overcurrent device, with a UL1449 TVSS device (Transient Voltage Surge Suppressor) tested as type 2 (6 kV / 3 kA min.), with a MCOV (Maximum Continuous Operating Voltage) min. rated to Phase to Phase voltage and a VPR (Voltage Protection Rating) of 1.5 kV.

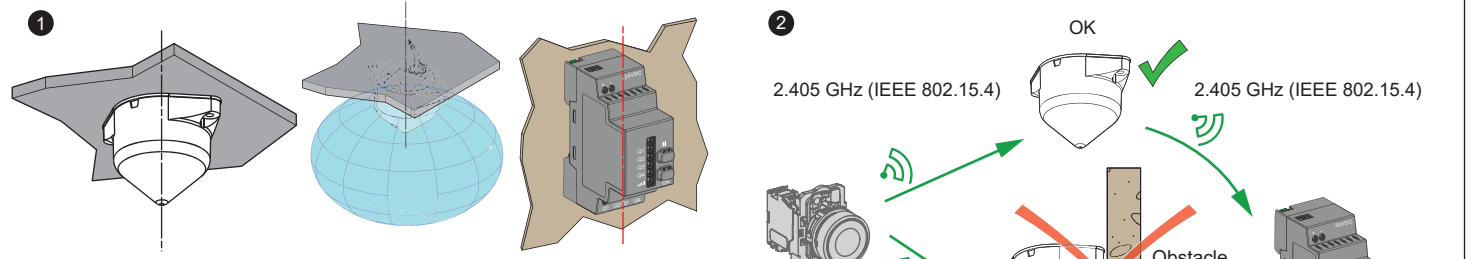
Surintensité à contrôler après la mise hors tension de l'équipement de protection contre la surintensité par le service principal, avec un équipement UL1449 de suppression des surtensions transitoires (TVSS) testé comme un équipement de type 2 (6 kV/3 kA min), avec une tension maximale de fonctionnement continu (MCOV) réglée au minimum sur une tension de phase à phase et un régime nominal de protection de tension (VPR) de 1,5 kV.

Steuerung des Überspannungsschutzes nach Überstromschutzgerät zur Trennung der Hauptleitung mit einem UL1449 TVSS-Gerät (Überspannungsschutz); getestet als Typ 2 (6 kV/3 kA min), mit einer maximalen Dauerbetriebsspannung (MCOV), einer min. Leiter-Leiter-Spannung und einem Spannungsschutzgrad (VPR) von 1,5 kV.

Control de sobretensión que se proporcionará una vez que el servicio principal desconecte el dispositivo de sobrecorriente, con un dispositivo UL1449 TVSS (Transient Voltage Surge Suppressor, limitador de sobretensiones transitorias) de tipo 2 probado (6 kV/3 kA min.), con una MCOV (Maximum Continuous Operating Voltage, tensión máxima de funcionamiento continua) mínima definida en una tensión de fase a fase y un VPR (Voltage Protection Rating, grado de protección de tensión) de 1,5 kV.

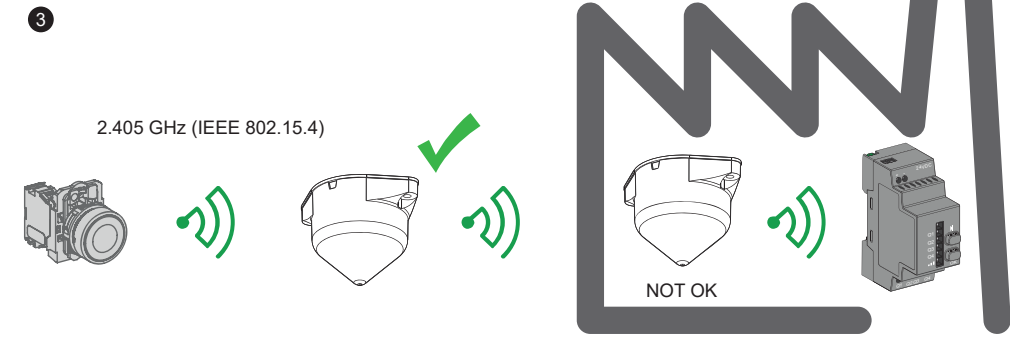
- en** • Use Copper conductors only.
- en** • Use Unshielded cables.
- en** • Use conductors with a temperature rating at least 80°C (176°F).
- fr** • Utiliser uniquement des conducteurs en cuivre.
- fr** • Utiliser des câbles non blindés.
- fr** • Utiliser des conducteurs ayant une tenue en température d'au moins 80 °C (176°F).
- de** • Ausschließlich Kupferleiter verwenden.
- de** • Ungeschirmte Kabel verwenden.
- de** • Leiter mit einer Temperaturbeständigkeit von mindestens 80 °C (176°F) verwenden.
- es** • Utilizar únicamente conductores de cobre.
- es** • Utilizar cables no apantallados.
- es** • Utilizar conductores con una temperatura nominal mínima de 80 °C (176°F).

**D Mounting tips**  
Conseils de montage / Consejos para el montaje / Consejos para el montaje



**Optimized installation / Installation optimale / Optimierte Installation / Instalación optimizada :**

The antenna and the receiver are installed following their vertical axis.  
L'antenne et le récepteur sont montés suivant leur axe vertical.  
Antenne und Empfänger werden entsprechend ihrer vertikalen Achse installiert.  
La antena y el receptor se instalan siguiendo su eje vertical.

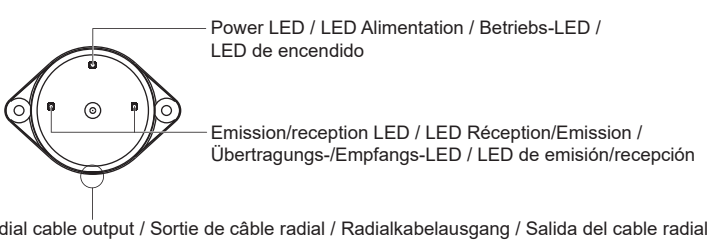


**E Installation conditions**  
Conditions d'installation / Installation conditions / Condiciones de la instalación

Operating temperature	Température d'utilisation	Temperatura de funcionamiento	Temperatura de funcionamiento	-25...+55°C (-13...+131°F)
-----------------------	---------------------------	-------------------------------	-------------------------------	----------------------------

**Radio / Radio / Radio / Radio**  
Wireless Communication IEEE 802.15.4 2.4 GHz (channel 11..26) compliant / Communication sans fil conforme à la norme IEEE 802.15.4 2,4 GHz (canaux 11 à 26) / Drahtlose Kommunikation IEEE 802.15.4 2,4 GHz (Kanal 11..26) konform / Comunicación inalámbrica compatible con IEEE 802.15.4 2,4 GHz (canales 11-26)

**F LED Diagnostic**  
Voyant de diagnostic / LED-Diagnose / LED de diagnóstico



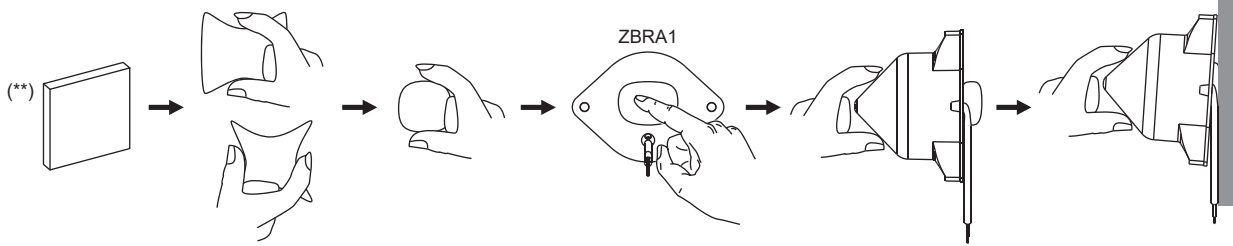
Consult the Expert Instruction Sheet on:  
Consulter l'Instruction de Service Expert sur :  
Lesen Sie das Experten-Anweisungsblatt auf:  
Consulte la hoja de instrucciones del experto en:  
[www.se.com](http://www.se.com)

Scan the tag with your smartphone to access the Web site:



- en** EIO0000000812
- fr** EIO0000000813
- de** EIO0000000814
- es** EIO0000000815

**A** **Assemblaggio temporaneo per la migliore posizione di ricezione/trasmisione**  
 用于找出最佳接收/传输位置的临时装配  
**Montagem temporária para localização da melhor posição de recepção/transmissão**  
 最適な送受信位置を探すための仮組立

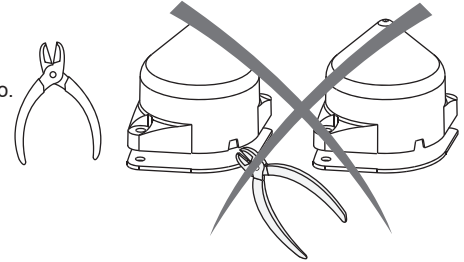


(\*\*) Gomma adesiva per montaggio temporaneo / 粘貼用于临时安装 /  
 Passagem para montagem temporária / 仮取り付けのための貼り付け

**NOTA / 注 / NOTA / 注記:**

Per l'assemblaggio temporaneo, non deve essere tagliata e tolta la parte asportabile del cappuccio.  
 对于临时装配, 不得分离护罩的易碎部分。

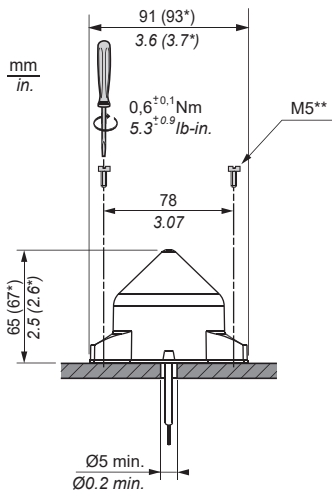
Para montagem temporária, a parte quebrável da caixa não pode ser recortada.  
 仮組立の段階では、フードの切り取り部分をカットしないでください。



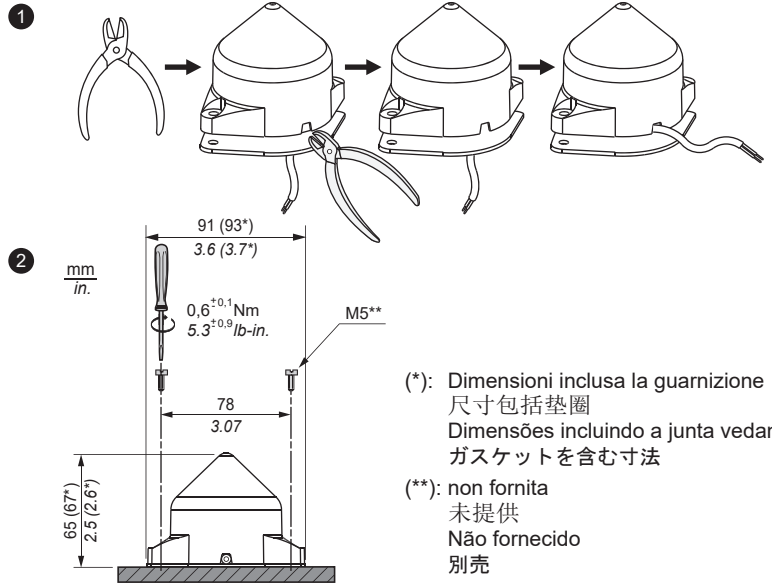
**B** **Montaggio definitivo**  
 最终安装 / **Montagem definitiva** / 最終取り付け

**B1** **Instradamento cavo assiale / 轴向电缆线路 /**  
**Encaminhamento do cabo axial / 軸配線**

Solo per uso interno all'involucro /  
 仅限于机箱内部使用 /  
 Apenas para uso interno em recinto  
 fechado /  
 筐体内部専用 /



**B2** **Instradamento cavo radiale / 径向电缆线路 /**  
**Encaminhamento do cabo radial / 放射配線**



(\*): Dimensioni inclusa la guarnizione  
 尺寸包括垫圈  
 Dimensões incluindo a junta vedante  
 ガasketを含む寸法

(\*\*): non fornita  
 未提供  
 Não fornecido  
 別売

**Certificação Anatel Brasil:**

• Este equipamento não tem direito à proteção contra interferência prejudicial e não pode causar interferência em sistemas devidamente autorizados.

**⚠ AVVERTENZA / 警告 / AVISO / 警告**

**FUNZIONAMENTO ANOMALO DELL'APPARECCHIATURA**  
 ● Non utilizzare la presente apparecchiatura in condizioni di sicurezza critiche.  
 ● Qualora sussista il rischio di danni al personale e/o alle apparecchiature, utilizzare gli interblocchi di sicurezza necessari.  
 ● Installare e utilizzare questa apparecchiatura in un ambiente adeguatamente classificato.

**意外的的设备操作**  
 ● 请勿在对安全性要求非常高的机器环境中使用本设备。  
 ● 在存在人员伤害和/或设备危险的情况下, 请使用适当安全联锁。  
 ● 请在符合额定规格的环境中安装并使用本设备。

**Il mancato rispetto di queste istruzioni può provocare morte, gravi infortuni o danni alle apparecchiature. death, serious injury, or equipment damage.**

**不按照上述规定操作会导致严重的人员伤亡或设备损毁。**

**FUNCIONAMENTO NÃO PRETENDIDO DO EQUIPAMENTO**  
 ● Não utilizar este equipamento em funções mecânicas com risco de segurança.  
 ● Utilizar interbloqueios de segurança apropriados quando existem perigos pessoais e/ou para o equipamento.  
 ● Instale e opere este equipamento em um ambiente com classificação adequada.

**想定されていない使い方**  
 ● 本装置はセーフティクリティカルな機械機能には使用しないでください。  
 ● 作業や機器に危険がある場所では、適切な安全保護装置を使用してください。  
 ● この機器は、適切な定格の環境で設置し、運転してください。

**A não observância destas instruções pode provocar a morte, ferimentos graves, ou danos no equipamento.**

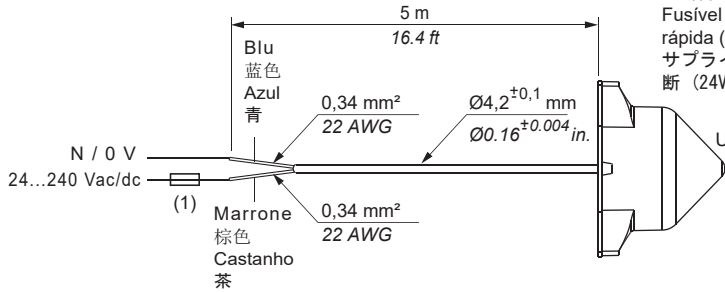
これらの指示に従わないと、死亡や重傷のおそれ、または装置に損傷が生じるおそれがあります。

- it** Le apparecchiature elettriche devono essere installate, usate e riparate solo da personale qualificato. Schneider Electric non assume nessuna responsabilità per qualunque conseguenza derivante dall'uso di questo materiale.
- zh** 电器设备的安装、操作、维修和维护工作仅限于合格人员执行。对于超出本资料所引发的任何后果, Schneider Electric 概不负责。
- pt** A instalação, utilização e manutenção do equipamento eléctrico devem ser efectuadas exclusivamente por pessoal qualificado. A Schneider Electric não assume qualquer responsabilidade pelas consequências resultantes da utilização deste material.
- jp** 電気機器の取り付け、操作、修理、メンテナンスは、資格を持つ技術者が行うようにしてください。本書の使用によって生じたいかなる結果についても、シュナイダー・エレクトリックでは責任を負いかねます。



Scan this code to access the Cybersecurity Portal

**C** Schema di cablaggio  
接线图 / Diagrama de cablagem / 配线图



(1): 200 mA, Bussmann® con codice di riferimento GMA-200mA, 250 V 0,2 A ad azione rapida (fusibile da 100 mA per 24 V 0.1 A) / 200 mA 熔断器, 来自供应商 Bussmann® (参考 GMA-200mA, 250 V 0.2 A 快速熔断器) (100 mA 保险丝, 适用于 24 V 0.1 A) / Fusível de 200 mA do fornecedor Bussman®, referência GMA-200mA, 250 V 0,2 A de queima rápida (fusível de 100 mA para 24 V 0,1 A) / サプライヤ Bussmann® からの 200 mA ヒューズ: リファレンス GMA-200mA、250 V 0.2 A 速断 (24V 0.1A用100mAヒューズ)

- it** • Utilizzare esclusivamente conduttori in rame.
- zh** • 仅使用铜导体
- pt** • Utilizar somente condutores de cobre.
- jp** • 銅製導体のみを使用してください
- Utilizar cabos não blindados.
- Utilizar condutores com classificação de temperatura mínima de 80 °C (176°F).
- シールドされていないケーブルを使用してください
- Utilizar condutores com classificação de temperatura mínima de 80 °C (176 °F) 以上の導体を使用してください
- Utilizzare conduttori con una temperatura nominale di almeno 80 °C (176°F).
- 使用非屏蔽电缆
- 使用额定温度至少为 80 °C (176 °F) 的导体

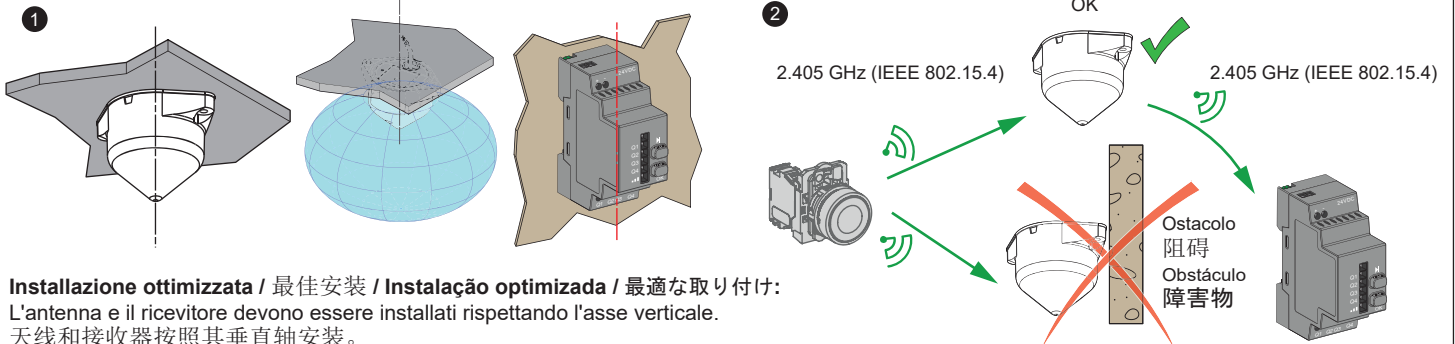
UL: controllo della sovratensione da eseguire dopo che il dispositivo di sovraccorrente scollega dal servizio principale, con un dispositivo UL1449 TVSS (Transient Voltage Surge Suppressor) testato come tipo 2 (6 kV/3 kA min), con un MCOV min. nominale (valore di protezione della tensione) di 1,5 kV.

在主服务分离过电流设备后面提供过电压控制, 以及经测试为类型 2 (最小值为 6 kV/3 kA) 的 UL1449 TVSS 设备 (瞬变电压浪涌抑制器), 最小 MCOV (最大持续工作电压) 额定为相间电压, VPR (额定电压保护) 为 1.5 kV。

Controlo de sobretensão a fornecer depois de o serviço principal desligar o dispositivo de sobrecorrente, com um dispositivo UL 1449 TVSS (Transient Voltage Surge Suppressor - supressor de picos de tensão transitório) testado como 2 (6 kV/3 kA min.), com uma MCOV (Maximum Continuous Operating Voltage - tensão de funcionamento contínua máxima) de classificação mínima de tensão fase a fase e um VPR (Voltage Protection Rating - classificação de protecção de tensão) de 1,5 kV.

過電圧制御は、UL1449 TVSS デバイス (Transient Voltage Surge Suppressor) がタイプ 2 (6 kV / 3 kA min.) としてテストされ、最大連続使用電圧 (MCOV) の最小値が相間電圧および電圧防護レベル (VPR) の 1.5 kV に評価されていることを確認し、メインサービス切断過電圧デバイスの後に提供します。

**D** Consigli per il montaggio  
安装提示 / Sugestões de montagem / 取り付けのヒント



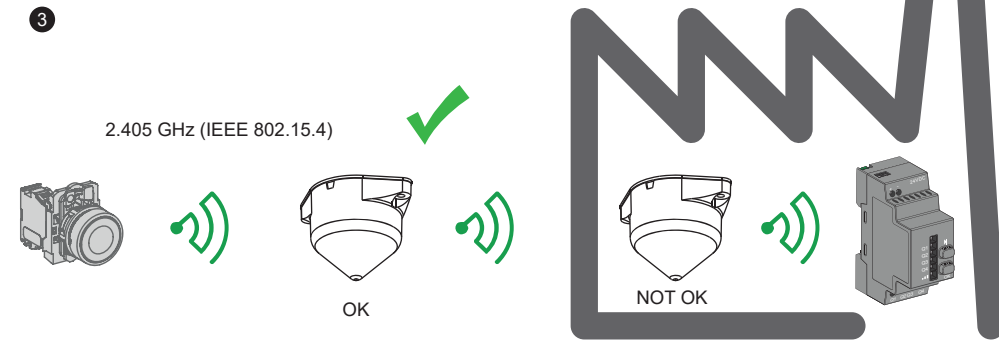
**Installazione ottimizzata / 最佳安装 / Instalação otimizada / 最適な取り付け:**

L'antenna e il ricevitore devono essere installati rispettando l'asse verticale.

天线和接收器按照其垂直轴安装。

A antena e o receptor são instalados de acordo com o seu eixo vertical.

アンテナと受信機は垂直軸に沿って取り付けます。



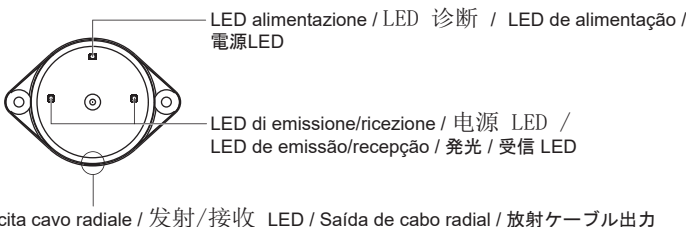
**E** Condizioni di installazione  
安装条件 / Condições de instalação / 設置条件

Temperatura d'esercizio	工作温度	Temperatura de funcionamento	動作温度	-25...+55°C (-13...+131°F)
-------------------------	------	------------------------------	------	----------------------------

**Radio / 无线电 / Rádio / 無線**

Comunicazione wireless conforme allo standard IEEE 802.15.4 a 2,4 GHz (canali 11-26) / 无线通信符合IEEE 802.15.4标准, 工作在2.4 GHz频段 (信道11至26) 。 / Comunicação sem fios IEEE 802.15.4 2,4 GHz (canal 11..26) compatível / 無線通信 IEEE 802.15.4 2.4 GHz (チャンネル11~26) 準拠

**F** Diagnostica a LED  
工作温度 / Diagnóstico de LED / LED 診断



Consultare la Scheda di istruzioni per utenti esperti su:

径向电缆输出

Consultar a Folha de Instruções para o Perito em:

エキスパートインストラクションシートを参照してください:

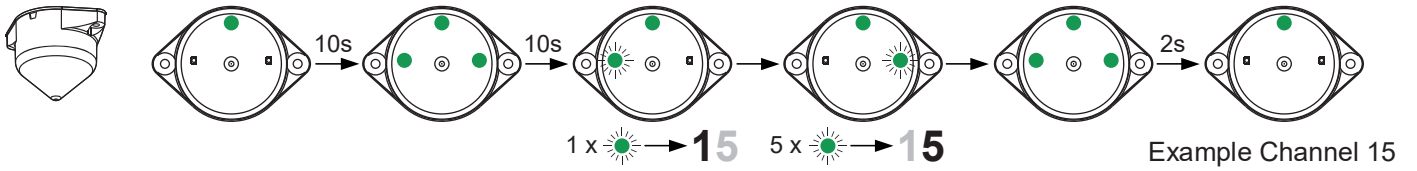
www.se.com

Scan the tag with your smartphone to access the Web site:

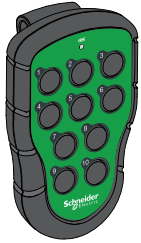


- it** EIO0000000816
- zh** EIO0000000817
- pt** EIO0000000818
- jp** EIO0000000895

ZBRA1 Power ON



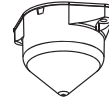
ZBRA1 Automatic Channel Setting with ZART



ZART03  
ZART04  
ZART06  
ZART08  
ZART10



ZART8LS



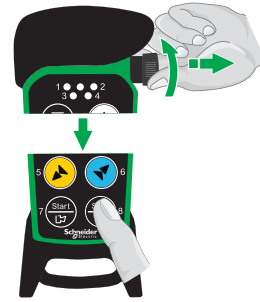
ZBRA1 SV ≥ 3.5

1 ZBRA1 Power OFF



Channel ??

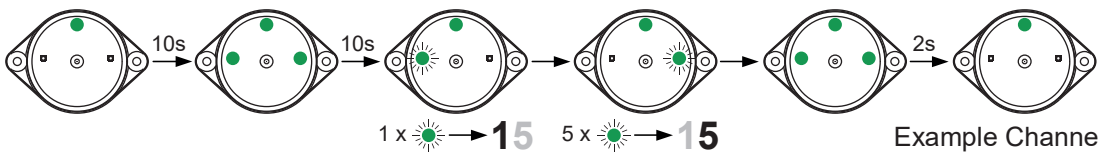
2 Remote Power ON



3 Press and mountain buttons 1 and 2



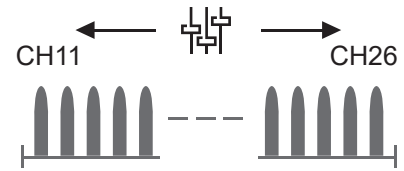
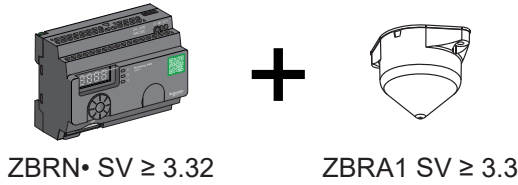
4 ZBRA1 Power ON



5 Release buttons 1 and 2



ZBRA1 Channel Setting with ZBRN

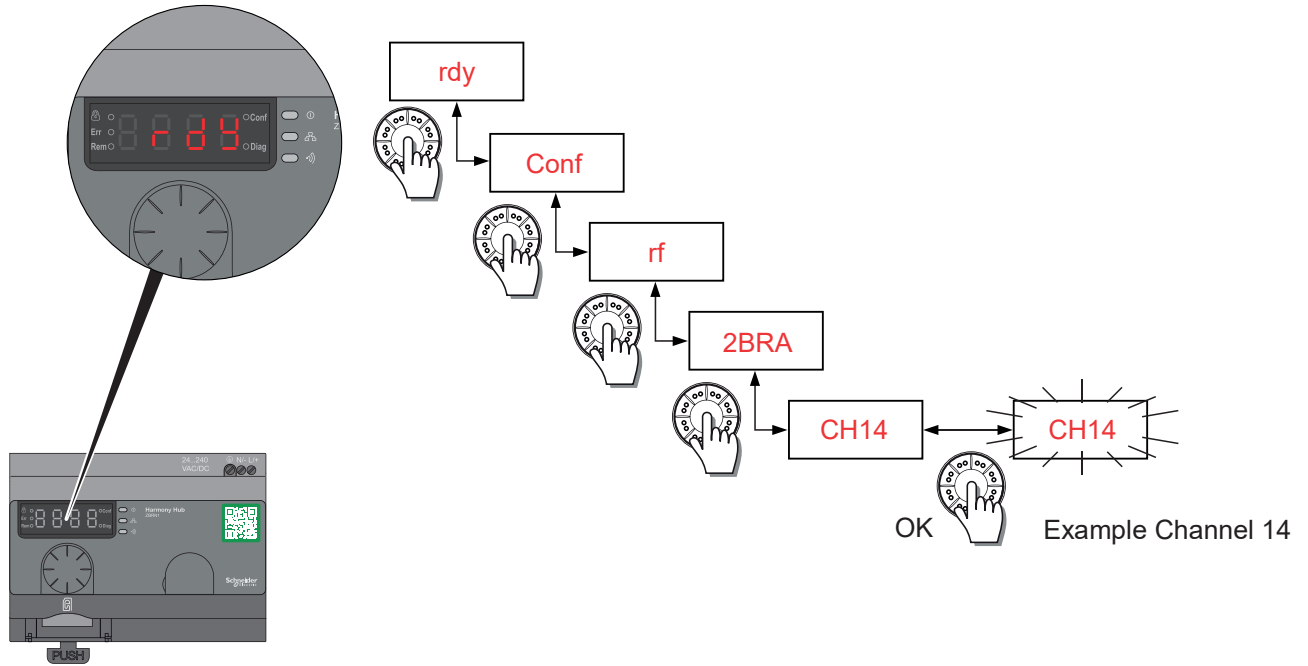


1 ZBRA1 Power OFF

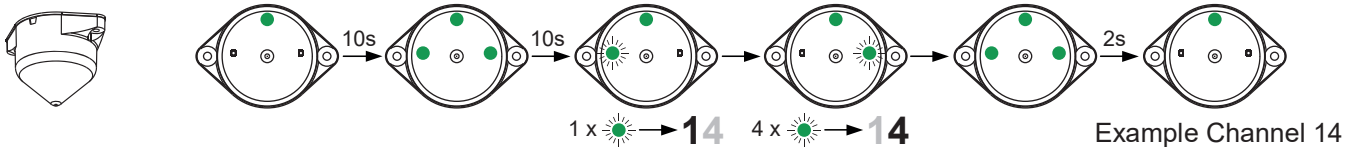


Channel ??

2 ZBRN channel configuration



3 ZBRA1 Power ON



Federal Communication Commission Interference Statement

This device complies with Part 15 of the FCC Rules. Operation is subject to the following two conditions:

- This device may not cause harmful interference,
- This device must accept any interference received, including interference that may cause undesired operation.

This equipment has been tested and found to comply with the limits for a Class B digital device, pursuant to Part 15 of the FCC Rules. These limits are designed to provide reasonable protection against harmful interference in a residential installation.

This equipment generates, uses and can radiate radio frequency energy and, if not installed and used in accordance with the instructions, may cause harmful interference to radio communications. However, there is no guarantee that interference will not occur in a particular installation.

If this equipment does cause harmful interference to radio or television reception, which can be determined by turning the equipment off and on, the user is encouraged to try to correct the interference by one of the following measures:

- Reorient or relocate the receiving antenna.
- Increase the separation between the equipment and receiver.
- Connect the equipment into an outlet on a circuit different from that to which the receiver is connected.
- Consult the dealer or an experienced radio/TV technician for help.

**FCC Caution:** Any changes or modifications not expressly approved by the party responsible for compliance could void the user's authority to operate this equipment.

This transmitter must not be co-located or operating in conjunction with any other antenna or transmitter.

Radiation Exposure Statement

This equipment complies with FCC radiation exposure limits set forth for an uncontrolled environment. This equipment should be installed and operated with minimum distance 20 cm between the radiator and your body.

Industry Canada Statement

This device complies with RSS-247 of the Industry Canada Rules.

Operation is subject to the following two conditions:

- This device may not cause harmful interference,
- This device must accept any interference received, including interference that may cause undesired operation.

Ce dispositif est conforme à la norme CNR-247 d'Industrie Canada applicable aux appareils radio exempts de licence. Son fonctionnement est sujet aux deux conditions suivantes:

- Le dispositif ne doit pas produire de brouillage préjudiciable,
- Ce dispositif doit accepter tout brouillage reçu, y compris un brouillage susceptible de provoquer un fonctionnement indésirable.

Radiation Exposure Statement

This equipment complies with IC radiation exposure limits set forth for an uncontrolled environment. This equipment should be installed and operated with minimum distance 20 cm between the radiator and your body.

Déclaration d'exposition aux radiations

Cet équipement est conforme aux limites d'exposition aux rayonnements IC établies pour un environnement non contrôlé. Cet équipement doit être installé et utilisé avec un minimum de 20 cm de distance entre la source de rayonnement et votre corps.