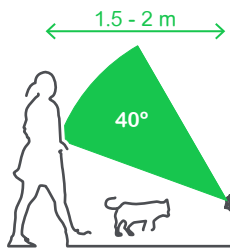


Iconic Night Walk

REMOVE INSTRUCTIONS BEFORE INSTALLATION

Detection range



Movement is detected only in the green zone, so small pets won't trigger the light.

Mode selection



Light comes ON when movement is detected and remains ON for 2 min after the last movement is detected.



Dimmed Light comes ON at night time. Brightens up when movement is detected, and remains bright for 2 min after the last movement is detected, then dims down.



Select mode



Daylight setting

Set OFF or set sensor threshold level.

OFF



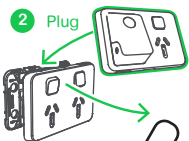
> Night light, movement detection and Sensor light are OFF.

> LED operates between dark (1 lux) and semidark (50 lux) illumination, turn dial to adjust level.

Installation

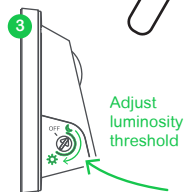


> Set the Night light mode using the selector on the back of the product. Set the dial to the OFF position.



> Remove existing double socket skin from the product (pull on top and bottom grooves).

> Plug the Night Walk onto the socket grid (3025G, 395G), apply pressure on the surround to ensure it is properly clipped.



> Wait for the LED to turn OFF (≈ 1 min calibration), set / wait until room illumination is at intended brightness. Adjust daylight setting dial until LED illuminates.

> Remove skin to select Sensor light if desired, and replace.

© 2016
Schneider
Electric

NOTICE

EQUIPMENT DAMAGE HAZARD

- Follow the instructions for product installation
 - Do not use this product for any other purpose than specified in this instruction.
 - No user serviceable parts inside.
- Failure to follow these instructions may result in equipment damage.**

Description

- **LED strip:** 2 level of intensity (not adjustable). Low intensity for night light. Bright intensity for sensor light.
- **Daylight dial:** OFF / 0-50 lux
- **Movement sensor:** detect movement to control the Night Walk sensor light.

QGH10671-01