



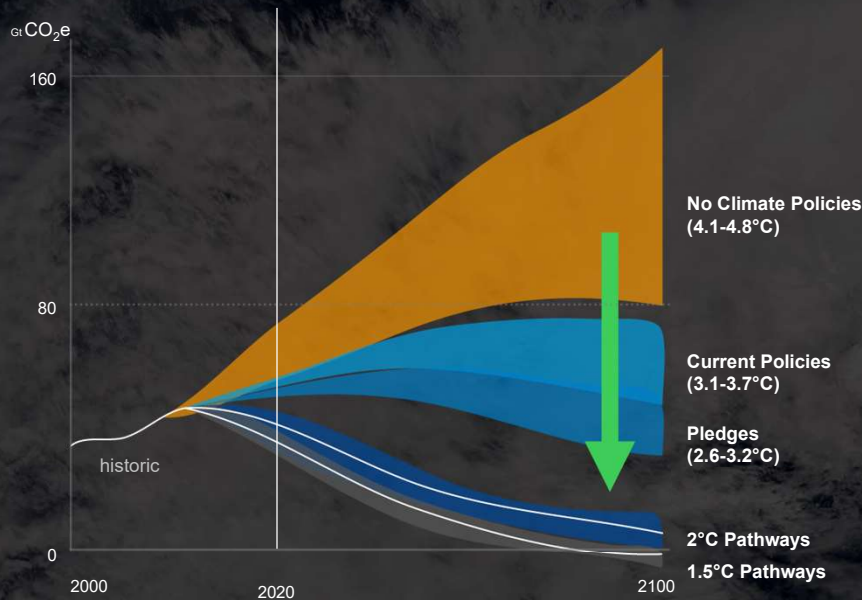
Sustainable Grids with Green & Digital Switchgear

One Planet

A sense of emergency

Climate change & Earth Overshoot Day

80% Total GHG Emissions
Energy production & consumption



SF₆ excellent dielectric properties

- 2.5x more efficient than air
- Good thermal capacity & extremely stable: inert, inflammable, non-toxic

But one Challenge – **Climate impact**

1kg of SF₆ equals

25,200 kg of CO₂

Sources: IEA, Schneider Electric

Market trends impacting MV distribution

China is already going SF₆-free.

The State Grid Corporation of China is mandating that a percentage of its procurement must be SF₆-free.

The **European** Commission has proposed a new regulation on F-gases, including SF₆, to take effect 1st January 2026.

The **California** Air Resources Board (CARB) set December 31st 2024 as a target date for SF₆ to be phased out from all equipment of 72 kV or less.

Thailand commitment in COP 27 : aims to reach Carbon Neutral by 2050. Net Zero in 2065.



SF6 is used

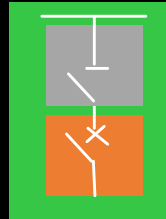
1. As an **insulator**

AND/OR

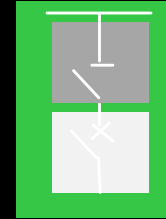
2. To **break current**
inside LBS **switch** disconnectors
inside SF6 **circuit breaker**

All manufacturers use similar
technology

SM6 Circuit Breaker SF6



SM6 Circuit Breaker
vacuum



SM6 Switch



RM6 Circuit Breaker SF6



FBX Circuit Breaker
vacuum



RM6 Switch



SF6



Air



Vacuum

We believe the **Best Gas for Insulation**
is **Pure Air**

Pure Air – **Ambient Air** removing Water, Particles, Oil,
Compliance with **ISO 8573-1 standard**

ISO 8573-1 : Compressed air — Part 1: Contaminants and purity classes

Breaking technologies today

Vacuum

Switching technology:
proven, cleaner,
safer, and reliable



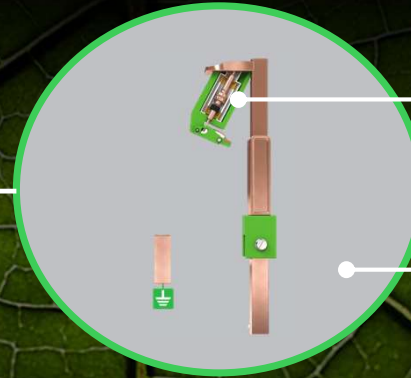
Schneider Electric Vacuum Interrupters

Sulfur Hexafluoride SF₆

Indisputable excellent performance

- ✓ Non-toxic in its pure form
- ✓ Very good medium for breaking an electric arc
- ✓ Proven and reliable for decades
- ✓ Enables compact switchgear design

Sustainability: proven technology with pure air & vacuum



Breaking: SVI
Shunt Vacuum Interruption

Insulation: Pure Air
Pressurized

Boost the sustainability of your business

- No GWP impact on environment
- No recycling required for air at the end of life

Make your operations future-ready

- No F-gas or alternative gases, only pure air, which is free from regulatory considerations
- Avoid extra cost of recycling SF₆

The new SF_6 -free Medium Voltage Range : Powered by Air and Digital

SM AirSeT

Secondary Modular AIS



RM AirSeT

Secondary RMU GIS



GM AirSeT

Primary GIS



RM AirSeT: The new **Green and Digital** Ring Main Unit

Sustainability

Safety

Efficiency

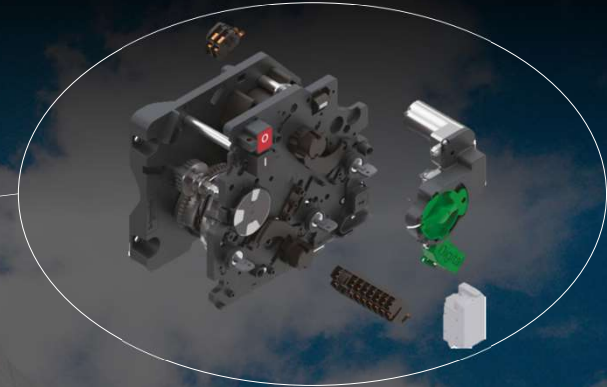


- Used in medium-voltage secondary distribution network
- For connection, isolation, protection of transformers & feeders
- In a typical ring or radial connected networks

40 Years Service Life

Technologies ensures operator and disconnection

CompoDrive is the next-generation range of switching mechanisms



**Materials
dedicated to
withstand extreme
conditions**

**Enhance safety
of people
& operations**

- High mechanical endurance with high-tech composite materials
- No loss of performance due to low temperatures corrosion or grease ageing

Eco design

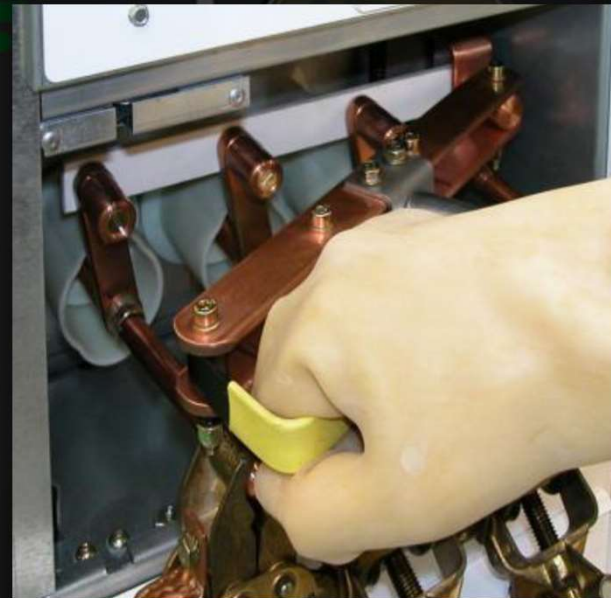
Plug & Play motorization for easier upgradability

RM AirSeT I functions: Integrated Cable Testing Safety, Flexibility, Easiness



Integrated Cable Testing with “earthing switch interlock”:

- ✓ Cable testing without accessing cable box or dismantling cable connections
- ✓ Test device connection from the front of the switchboard, while cables remain earthed
- ✓ Reliable interlocks with earthed star point

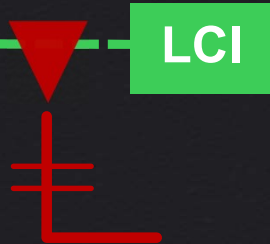
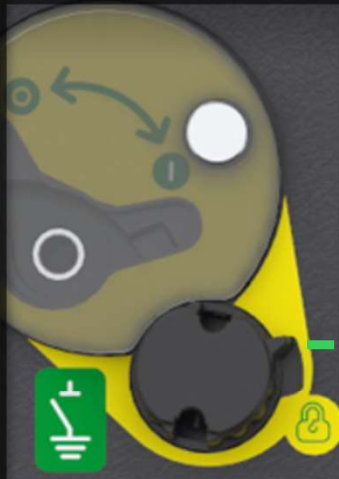
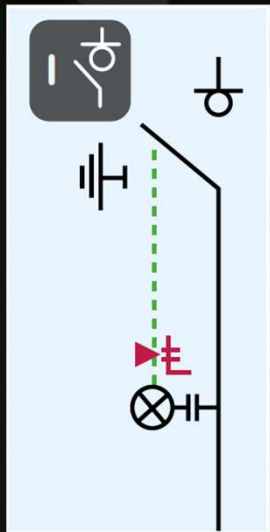


RM AirSeT Live Cable Interlock

Reliability, Flexibility, Easiness



Live Cable Interlock: Electrical interlock helps avoid the earthing of live cables



Live Cable Interlock

RM AirSeT I & Q & B functions: Earthing contacts visibility

Safety, Flexibility, Easiness



Leveraging Digital & IoT features to enable your network optimization



Network Management

TVDA Factory tested
Easergy T300: all in one
RTU+FPI+PSU



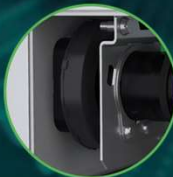
Thermal & Environmental Monitoring

Faulty connections detection via
TH110 wireless thermal sensors
Fast-aging prevention
via **CL110** wireless condensation
sensors



Current sensors

on cable bushings
(up to cl 0.5s)



Operation

via Smart Ready detectors
VPIS or **VDS (VDIS)**



Protection relays

VIP4x self-powered/ P1
auxiliary-powered allow
auto-reclosing, logic
selectivity directional
protection



MV power management (DER regulation)

via smart-ready
voltage sensors,
LPVT, and



Current sensors
split type on cables



Digital Logbook – Easy Collaborate, share and find documents

Project info

- Project location
- EU customer info
- Commissioning date

Design docs

- Single line diagram
- Protection setting

Switchboard docs

- CAD Drawings
- Switchboard photos
- User manual
- Single line diagram
- Bill of material
- Device serial number

Commissioning doc

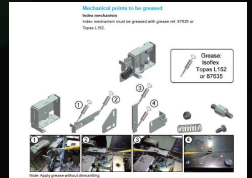
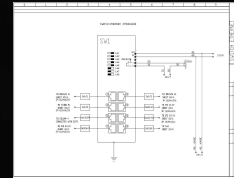
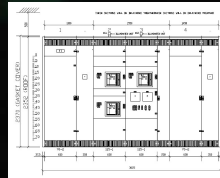
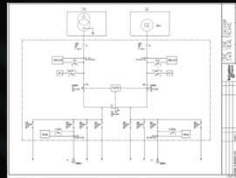
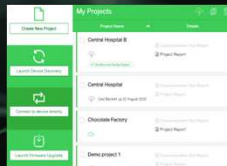
- Device password
- IT network configuration
- EPC project report
- EPC com test report

Commercial docs

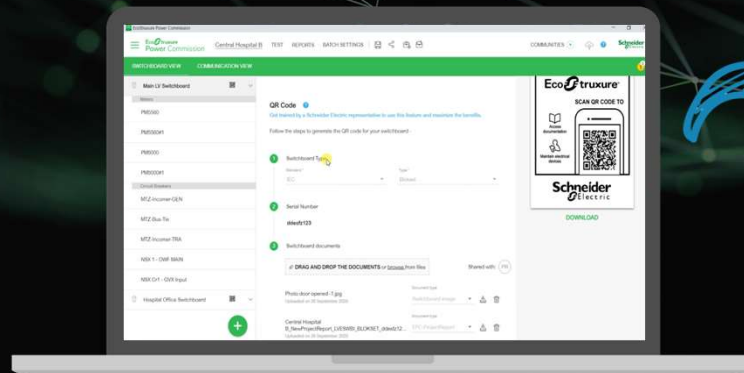
- Product & service brochure
- Warranty doc

Maintenance docs

- Maintenance plan
- Maintenance guide
- Spare part lists



EcoStruxure Power Commissioning



EcoStruxure™ AOA 3D features & benefits

Augmented Reality Features



Access to up-to-date & Contextual documentation

Step-by-step guided Operating Procedures

Superimpose AR SLD to real equipment

Equipment Real Time Monitoring

Expert Guidance on Demand

Virtual Reality Features

Training mode on 3D digital twin

Remote monitoring - Access Data from Anywhere

Access to real time EcoStruxure data



IMPROVE ELECTRICAL SAFETY & INCREASE POWER RELIABILITY



- Step-by-step procedures eliminating risk of human error
- Operate without having to be in immediate contact.



INCREASE OPERATOR EFFECTIVENESS

- Save time to access to relevant contextual information
- Easier document Management
- Make live data available exactly where and when operators need it



ACCELERATE TRANSFER OF KNOWLEDGE

- Facilitate and fasten On-Boarding Process
- Ease the first access to a new site
- Access Tailor-Made & Immersive Training



EcoStruxure **Asset Advisor** for Electrical Distribution

Cybersecure Cloud-based remote monitoring and risk assessment service with 2 different levels

Live Data
& Smart
Alarming



Dedicated Service
Bureau experts

PREVENTIVE

Anticipate maintenance and manage day to day operations through smart alarming

PREDICTIVE

Manage critical assets performance and safety through Predictive Analytics with expertise as a service



Customized
insights
reported



24/7
Service
Bureau



Web dashboard
& Mobile Apps

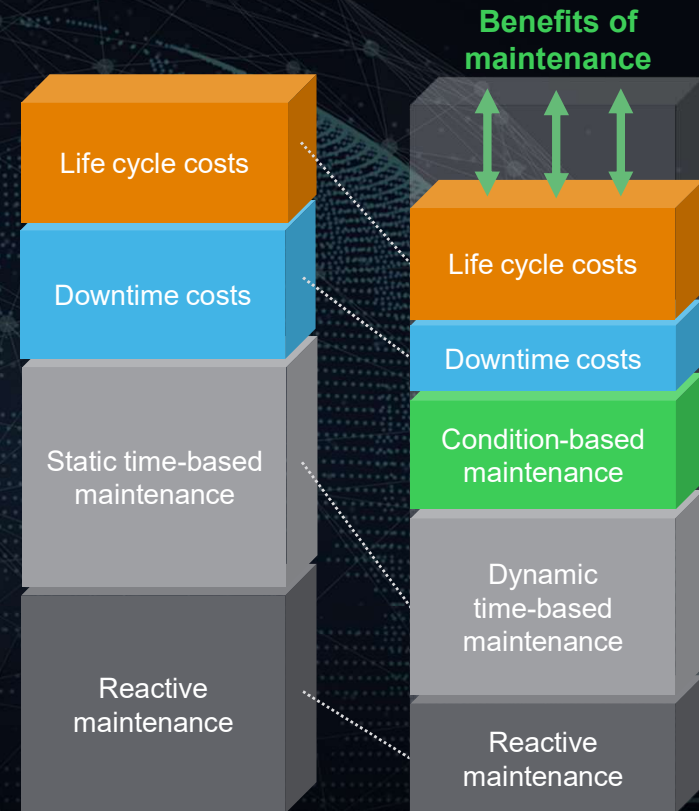


Condition Based
Maintenance &
predictive
analytics

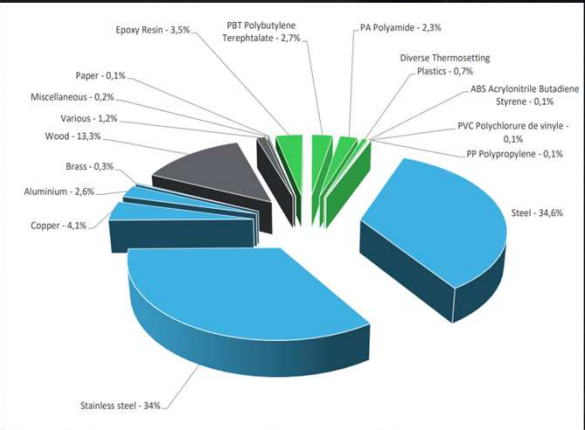
EcoStruxure Asset Advisor - Optimize the cost of asset management

With EcoStruxure Asset Advisor, proactively identify and address issues inside electrical equipment to:

- Mitigate electrical failure risk
- Reduce downtime
- optimize maintenance work.

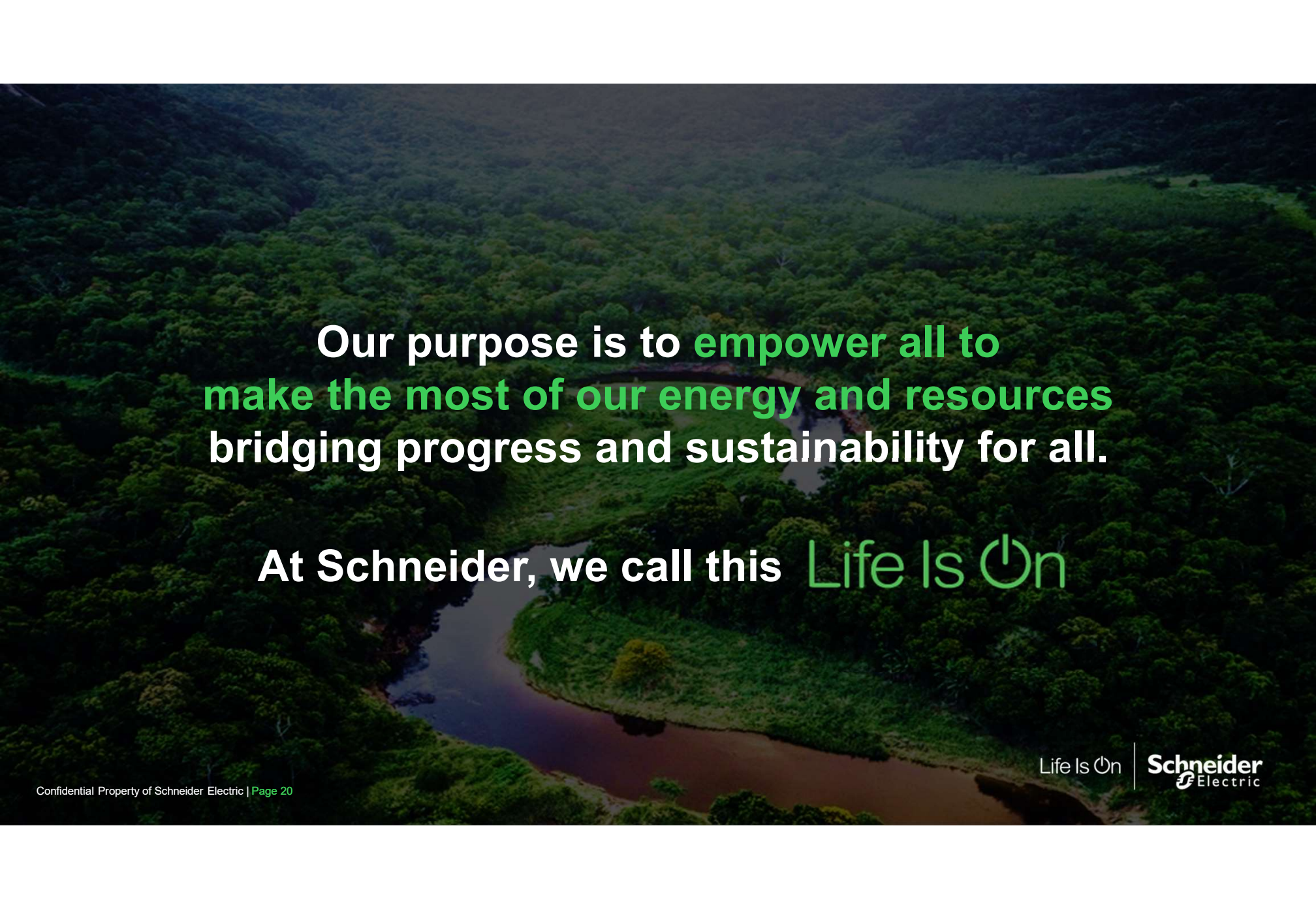


Product Environmental Profile – RM AirSeT IIQ



	Plastics	9,5%
	Metals	75,6%
	Others	14,8%

Recyclability : 93%

An aerial photograph of a dense, green forest. A river or stream winds through the center of the forest, reflecting the surrounding greenery. The lighting is soft, suggesting a misty or overcast day.

Our purpose is to **empower all to
make the most of our energy and resources**
bridging progress and sustainability for all.

At Schneider, we call this **Life Is On**

Life Is On

Schneider
Electric

Life Is On

Schneider
Electric