

PowerLogic™ Current Transformers (CT)

Technical Datasheet

5A Solid and Split core

Schneider Electric is the global specialist in energy management with the most complete power monitoring product line. Current Transformers are essential components designed to be used with Schneider Electric's extensive power monitoring product portfolio. From simple energy meters to world class power quality meters, these proven products satisfy any requirement.

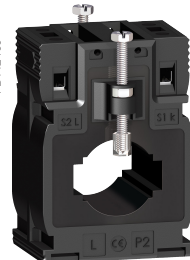
Solid core CTs

PB112446



METSECT5CCxxx

PB112460



METSECT5MAxxx

PB112456



METSECT5DCxxx

PB112467



METSECT5VVxxx

Split core CTs

PB119872



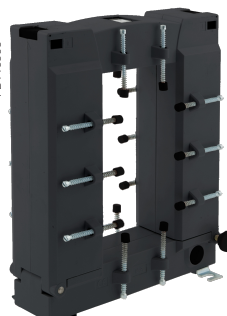
METSECT5HAxxx

PB119862



METSECT5GAxxx

PB119868



METSECT5GJxxx

PB119876



METSECT5HJxxx



Solid Core CTs

These current transformers from Schneider Electric are a comprehensive offer, ideally suited throughout the entire low voltage network, from 40 A to 6000 A. They deliver secondary current (0-5 A) proportional to the current measured at the primary. They can be used in combination with measurement devices (switchboard instrumentation, Ammeters, kilowatt-hour meters, power-monitoring units, control relays etc.). CTs with low VA burden allows them to be used in combination of measurement equipments.

The solution for

- Perfect for new and existing installations and expansion projects in a variety of markets:
- Commercial buildings
- Industrial facilities
- Medical facilities
- Data centers
- Education
- Oil & Gas

Benefits

- Safety: sealable insulating cover
- Installation: on symmetrical DIN rail, on mounting plate, on busbar
- Well adapted CT as the accuracy class is better than rated accuracy
- Multiple secondary terminal options for different mounting profile
- Current Transformers for coaxial cable
- Current Transformers for vertical or horizontal bar
- Current Transformers for cable or bar profile
- Compact size suitable for different sizes of conductors
- Tropicalized rating for harsh environmental condition
- Adaptable for different conductor profile and primary current intensity

Features

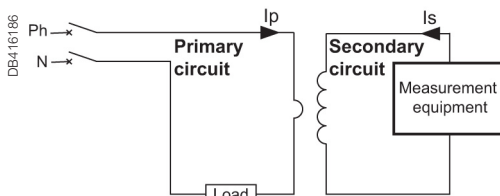
- A broad selection of ratings: from 40 A to 6000 A I_p with 120% max. range
- Fully compatible with Schneider Electric's complete portfolio of industry leading metering products as well as Third Party measurement devices.
- Safety through sealable insulating cover
- Compliance with IEC measurement standards with accuracy class ranges from Class 0.5 to Class 3
- Higher safety factor during installation and for facility
- For indoor use

Conformity of standards

- BS / EN 61869-1:2009
- BS / EN 61869-2:2012
- BS / EN 63000:2018
- VDE 0414
- Green Premium Ecolabel
- CE / UKCA certified
- EAC, Metrology

$I_p/5$ A ratio

When the primary is energized, the measurement equipment nearly acts as a short circuit which keeps the secondary voltage very low. This voltage will increase significantly if the short circuit is removed. Hence, always keep the secondary circuit connected to low impedance path or current signal terminals of the measuring instrument.

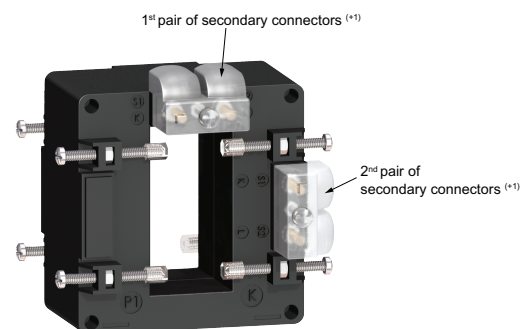


Application diagram of a CT.

I_p - Primary Current

I_s - Secondary Current

CTs with multi secondary output



(+1) Two pairs of secondary connectors are provided (parallel internal wiring - only one secondary winding) for easier cable access. 1 lateral + 1 on one extremity.

Hence, only one pair of secondary connectors must be used at a time.

Solid Core CTs

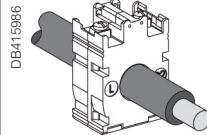
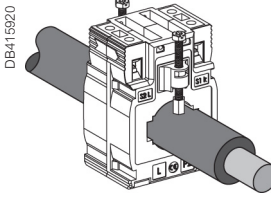
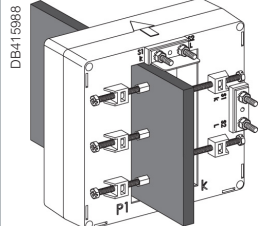
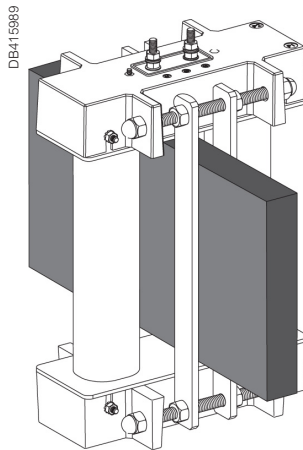

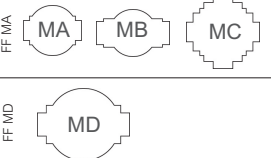
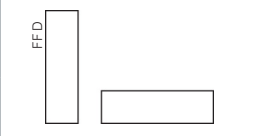

CT selection - conductor rating aspects

- The choice depends on the conductor profile and the maximum intensity of the primary circuit.
- CTs are available in different form factors and sizes to meet varied applications

Primary current can be measured in two ways:

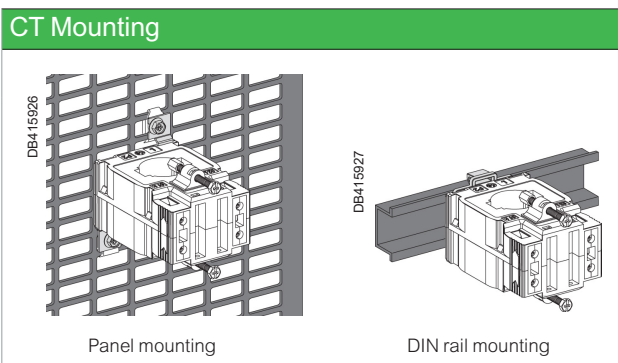
- CT with let-through primary
- CT with connection of primary by screws and nuts

CT with let-through primary

Conductor type	Cable	Mixed, bars or cables	Vertical or horizontal bars	Vertical bars
Suggested Current Transformer and mounting	 DB415986	 DB415920	 DB415988	 DB415989
Ratings (A)	40 to 250	150 to 800	400 to 4000	5000 to 6000
CT internal	Type C	Type M	Type D ⁽⁺¹⁾	Type V
	 FFC	 FF MA, MB, MC, MD	 FFD	 FF V2, VV

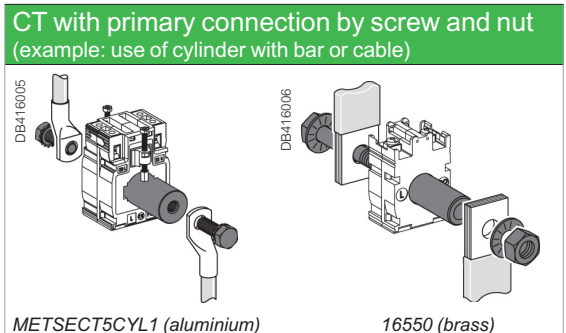
(+1) Two pairs of secondary connectors are provided (parallel internal wiring - only one secondary winding) for easier cable access. 1 lateral + 1 on one extremity. Hence, only one pair of secondary connectors must be used at a time.

Mounting method



Specific mounting: use of cylinder

A cylindrical metallic spacer ensures a proper CT positioning when the conductor or the CT cannot be positioned perpendicular. Secured by bolt + nut.



NOTE: This document is not intended to be used as an installation guide.

CT selection criterion - Electrical aspect of I primary (Ip)/5 A

- We recommend that you choose the ratio immediately higher than the maximum load current.
Example: Maximum load current = 1103 A; ratio chosen = 1250/5 (Ip = 1250 or Inom = 1250).
- For lower ratings: From 40/5 to 75/5 and for an application with digital devices, we recommend that you choose the next higher rating of Ip, for example 50/5 for 40/5, 60/5 for 50/5, and so on.
- Specific case of the motor starter: to measure motor starter current, you must choose a CT with primary current Ip = Id/2 (Id = motor starting current).

Validation of measurement solution according to accuracy class

It consists in controlling the right adaptation of the CT on the accuracy class aspect. The accuracy class is specified in the project. The total dissipated power of the measurement circuit (meter + cables) should not be superior to the specified limit of the CT. This limit is for different standard classes. If necessary, the choice of the cable section, the CT or meter should be modified to fit the requirement.

Copper cable cross-section (mm ²)	Approximate Power burden at 20 °C (VA)	Schneider Electric make power monitoring device	Maximum VA burden at Nominal current (secondary) input (VA)
1	1	Analog Ammeter, form factor 72 x 72 mm / 96 x 96 mm	1.1
1.5	0.685	Digital ammeter	0.3
2.5	0.41	PM8000	0.15
4	0.254	PM3000 / iEM3200	0.3
6	0.169	PM5000 / PM2000	0.15
10	0.0975	PM / EM1000H / EM64xxH	0.15
16	0.062		

For each temperature variation per 10 °C bracket, the power drawn up by the cables increases by 4 %.

Application example

Project specification: 200 A, in Ø27 mm cable, accuracy class 1.
Our choice is [METSECT5MA020](#).

For this CT selected on the chart (next page), the maximum VA burden is 7 VA (for "Accuracy class 1" which is specified in the project).

Internal profile type	Cables (mm)	Bars (mm)	Rating Ip/5 A (A)	Commercial reference number	Accuracy class			
					0.5	1	3	
					Max. power (VA)			
MA								
	Ø27	10 x 32	150	METSECT5MA015	3	4	-	
			200	METSECT5MA020	4	7	-	
			250	METSECT5MA025	6	8	-	
			300	METSECT5MA030	8	10	-	
			400	METSECT5MA040	10	12	-	

Control of the conformity of the measurement chain:

- PM3000 multi-meter: 0.3 VA.
 - 4 m length of 2.5 mm² cable: 0.41 x 4 = 1.64 VA.
- Calculated burden: 0.3 + 1.64 = 1.94 VA (< 7 VA)

Conclusion: this CT is well adapted as the accuracy class will be even better than 1.

Typical limits of current error and phase displacement error for measuring current transformers (classes from 0.1 to 1)

Accuracy Class	± Percentage current (ratio) error at percentage of rated current shown below				± Phase displacement at percentage of rated current as shown below							
					Minutes				Centiradians			
	5	20	100	120	5	20	100	120	5	20	100	120
0.1	0.4	0.2	0.1	0.1	15	8	5	5	0.45	0.24	0.15	0.15
0.2	0.75	0.35	0.2	0.2	30	15	10	10	0.9	0.45	0.3	0.3
0.5	1.5	0.75	0.5	0.5	90	45	30	30	2.7	1.35	0.9	0.9
1.0	3.0	1.5	1.0	1.0	180	90	60	60	5.4	2.7	1.8	1.8

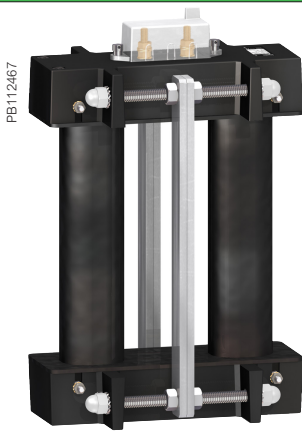
Solid Core CTs

Type C



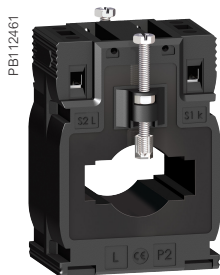
METSECT5CCxxx

Type V

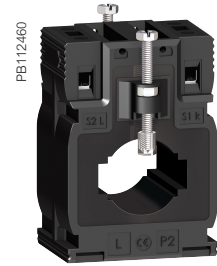


METSECT5VVxxx

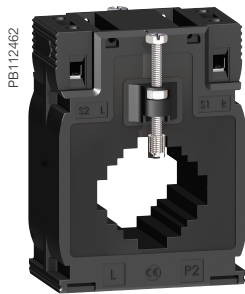
Type M



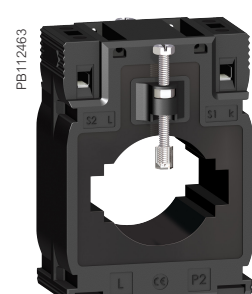
METSECT5MBxxx



METSECT5MAxxx



METSECT5MCxxx

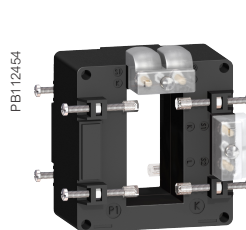


METSECT5MDxxx

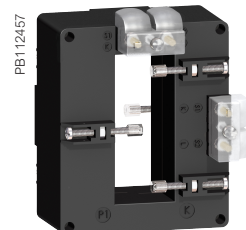
General characteristics

Secondary current I_s (A)	5 A (S1- S2 terminals, multiple secondary terminal options for different mounting profile)
Maximum voltage rating U_e (V)	720 V
Dielectric strength test	3 kV, 50 Hz for one minute
Frequency (Hz)	50/60 Hz nominal (47 - 63 Hz)
Instrument security/ safety factor (FS/sf)	40 to 4000 A: FS \leq 5 5000 to 6000 A: FS \leq 10
Rated short time thermal current (I_{th})	60 times the I_p current for 1 s (max 60 kA)
Rated dynamic current (I_{dyn})	2.5 I_{th}
Degree of protection	IP20
Operating temperature	Tropicalised range: -25 to 60 °C (for I_p upto 1000 A), -25 to 50 °C (for I_p 1250 A up to 6000A) Relative humidity - 5 % to 95 %
Storage temperature	-40°C to +85°C
Compliance with standards	BS / EN 61869-1:2009, BS / EN 61869-2:2012, BS / EN 63000:2018 VDE 0414
Secondary connection (as per model)	by terminals for lug or by tunnel terminals or by screws
Pollution degree	2
Installation category	III
Insulation class	B
Altitude	\leq 3000 m (9843 ft)

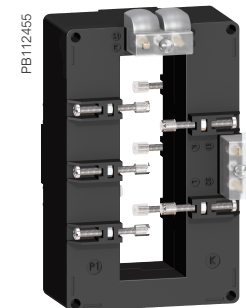
Type D



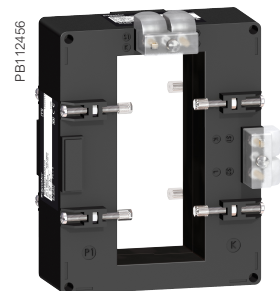
METSECT5DAxxx



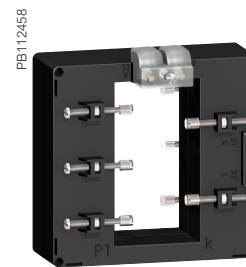
METSECT5DDxxx



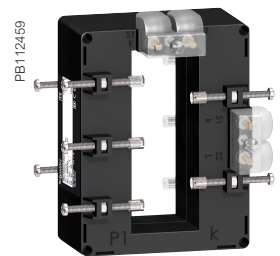
METSECT5DBxxx



METSECT5DCxxx



METSECT5DExxx



METSECT5DHxxx

Solid Core CTs

Representation of commercial reference numbers for CTs

MET SE CT X XX XXX

1 = 1 Amp
5 = 5 Amp
R = Rogowski

2 letters = Form Factor

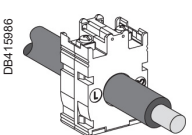
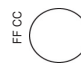
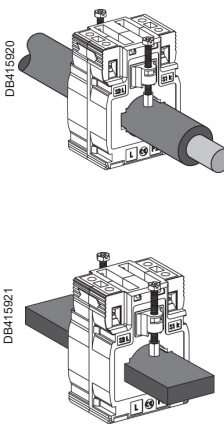



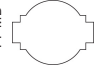
Last 3 digits = Primary rating/10
(Rounded off to next digit)

Examples:

Solid core
METSECT5CC008
CT - Current transformer
5 - 5 A CT secondary
CC - Form factor suitable for Coaxial cable (round) only
008 - 75 A primary rating, divide by 10

Split core
METSECT5GA020
CT - Current transformer
5 - 5 A CT secondary
GA - Form factor suitable for bus bars of max. size 23 x 33 mm
020 - 200 A primary rating, divide by 10

Commercial reference scheme

CT with let-through primary	CT internal type	Internal profile type and dimension in mm	Fastening mode	Ip/5 A rating (A) ^(*)	Accuracy class VA rating			CT Commercial reference	Accessories commercial reference	
					0.5	1	3		Cylinder	Sealable cover
Type C - solid-core CT (cable profile)										
	CC	FCC  Ø21	<ul style="list-style-type: none"> • Adapter for DIN rails • Mounting plate 	40	-	-	1	METSECT5CC004	METSECT5CYL1	Included
				50	-	1.25	1.5	METSECT5CC005		
				60	-	1.25	2	METSECT5CC006		
				75	-	1.5	2.5	METSECT5CC008		
				100	2	2.5	3.5	METSECT5CC010		
				125	2.5	3.5	4	METSECT5CC013		
				150	3	4	5	METSECT5CC015		
				200	4	5.5	6	METSECT5CC020		
250	5	6	7	METSECT5CC025						
Type M - solid-core CT (mixed: cable/bar profile)										
	MB	FF MB  Ø26 12 x 40 15 x 32	<ul style="list-style-type: none"> • Adapter for DIN rails • Mounting plate 	250	3	4	-	METSECT5MB025	-	METSECT5COVER
				300	4	6	-	METSECT5MB030		
				400	6	8	-	METSECT5MB040		
	MA	FF MA  Ø27 10 x 32 15 x 25		150	3	5	-	METSECT5MA015	METSECT5CYL2	METSECT5COVER
				200	4	7	-	METSECT5MA020		
				250	6	8	-	METSECT5MA025		
				300	8	10	-	METSECT5MA030		
	MC	FF MC  Ø32 10 x 40 20 x 32 25 x 25		250	3	5	-	METSECT5MC025	-	METSECT5COVER
				300	5	8	-	METSECT5MC030		
				400	8	10	-	METSECT5MC040		
				500	10	12	-	METSECT5MC050		
	MD	FF MD  Ø40 10 x 50 20 x 40		600	12	15	-	METSECT5MC060	-	METSECT5COVER
800			10	12	-	METSECT5MC080				
500			4	6	-	METSECT5MD050				
600			6	8	-	METSECT5MD060				
				800	10	12	-	METSECT5MD080		

(*) Maximum rated current (Imax) is 120% of the primary current (Ip).

Please contact your Schneider Electric representative for complete ordering information.

Solid Core CTs

Commercial reference scheme (contd.)

CT with let-through primary	CT internal type	Internal profile type and dimension in mm	Fastening mode	Ip/5 A rating (A) ⁽⁺¹⁾	Accuracy class VA rating			CT Commercial reference	Accessories commercial reference	
					0.5	1	3		Cylinder	Sealable cover
Type D ⁽⁺²⁾ - solid-core CT (vertical or horizontal bar - dual secondary terminals)										
	DA		Insulated locking screw	400	4	8	-	METSECT5DA040	-	Included
				500	8	10	-	METSECT5DA050		
				600	8	12	-	METSECT5DA060		
				800	12	15	-	METSECT5DA080		
				1000	15	20	-	METSECT5DA100		
				1250	15	20	-	METSECT5DA125 ⁽⁺³⁾		
	DB		Insulated locking screw	1000	6	10	-	METSECT5DB100	-	Included
				1250	8	12	-	METSECT5DB125 ⁽⁺³⁾		
				1500	10	15	-	METSECT5DB150 ⁽⁺³⁾		
				2000	15	20	-	METSECT5DB200 ⁽⁺³⁾		
				2500	20	25	-	METSECT5DB250 ⁽⁺³⁾		
	DC		Insulated locking screw	2000	25	30	-	METSECT5DC200 ⁽⁺³⁾	-	Included
				2500	30	50	-	METSECT5DC250 ⁽⁺³⁾		
				3000	30	50	-	METSECT5DC300 ⁽⁺³⁾		
				4000	30	50	-	METSECT5DC400 ⁽⁺³⁾		
	DD		Insulated locking screw	1000	10	15	-	METSECT5DD100	-	Included
				1250	12	15	-	METSECT5DD125 ⁽⁺³⁾		
				1500	15	20	-	METSECT5DD150 ⁽⁺³⁾		
DE		Insulated locking screw	1000	12	15	-	METSECT5DE100	-	Included	
			1250	15	20	-	METSECT5DE125 ⁽⁺³⁾			
			1500	20	25	-	METSECT5DE150 ⁽⁺³⁾			
			2000	20	25	-	METSECT5DE200 ⁽⁺³⁾			
DH		Insulated locking screw	1250	12	15	-	METSECT5DH125 ⁽⁺³⁾	-	Included	
			1500	12	15	-	METSECT5DH150 ⁽⁺³⁾			
			2000	20	25	-	METSECT5DH200 ⁽⁺³⁾			
Type V - solid-core CT (vertical bar profile)										
	VV		Insulated locking screw	5000	60	-	-	METSECT5VV500 ⁽⁺³⁾	-	Included
				6000	70	-	-	METSECT5VV600 ⁽⁺³⁾		

⁽⁺¹⁾ Maximum rated current (Imax) is 120% of the primary current (Ip).

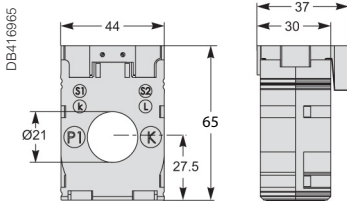
⁽⁺²⁾ Two pairs of secondary connectors are provided (parallel internal wiring - only one secondary winding) for easier cable access. One lateral and one on extremity. Hence, only one pair of secondary connector must be used at a time.

⁽⁺³⁾ Operating temperature: -25 to +50 °C (-13 to +122 °F)

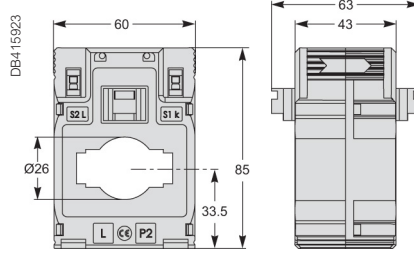
Please contact your Schneider Electric representative for complete ordering information.

Solid core CT dimensions

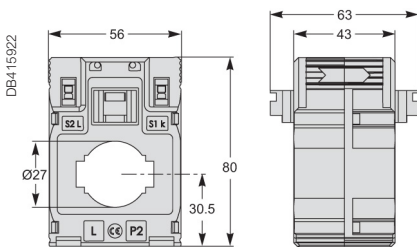
CC internal profile type



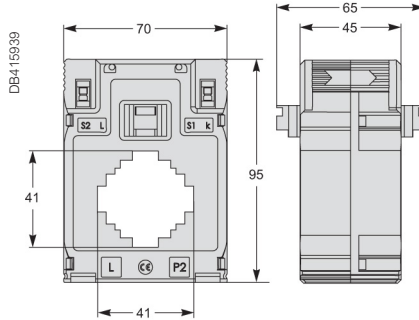
MB internal profile type



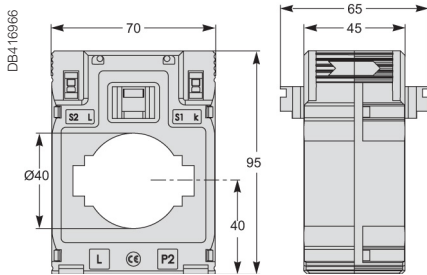
MA internal profile type



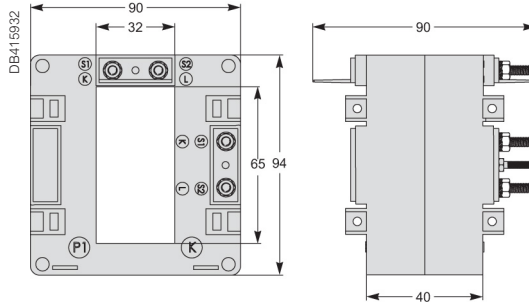
MC internal profile type



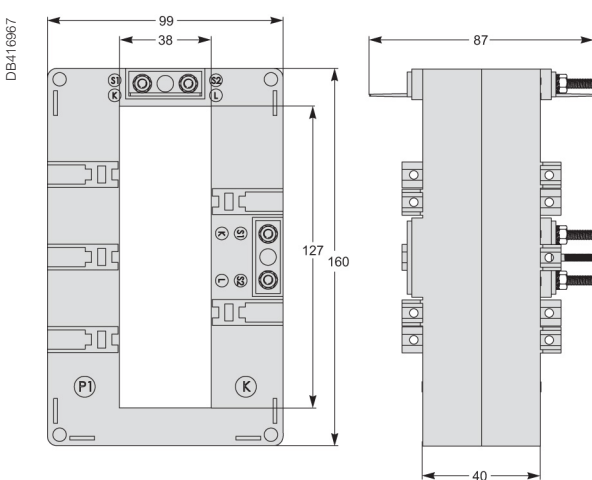
MD internal profile type



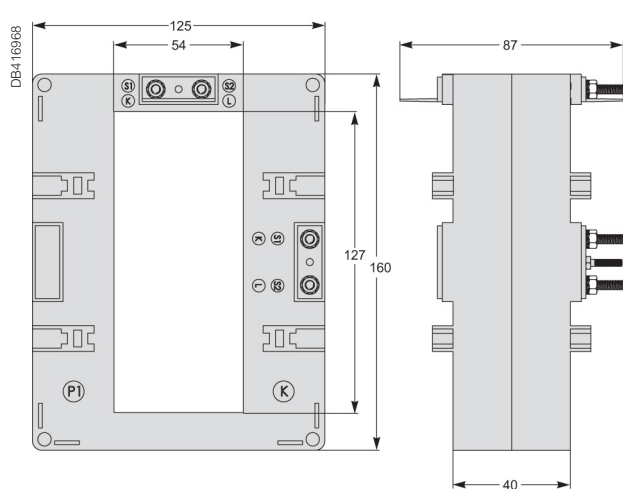
DA internal profile type



DB internal profile type

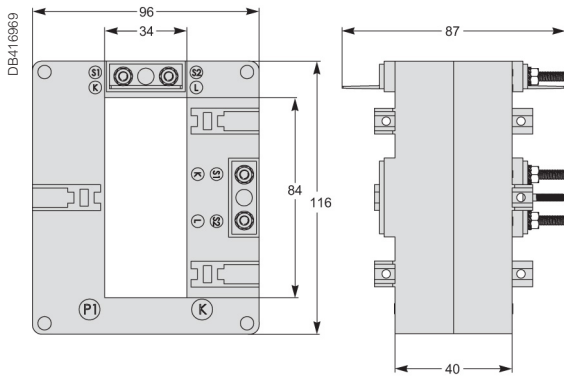


DC internal profile type

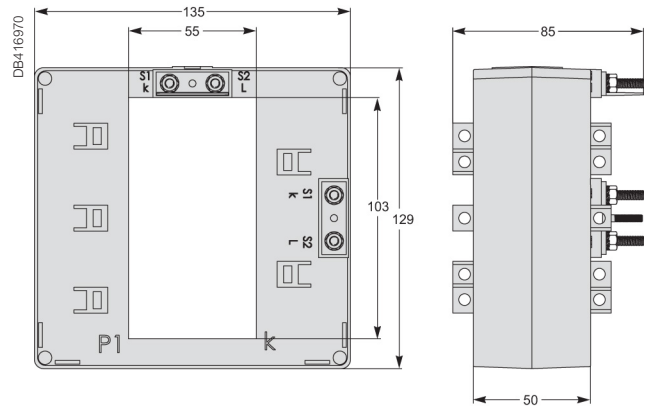


Solid core CT dimensions contd.

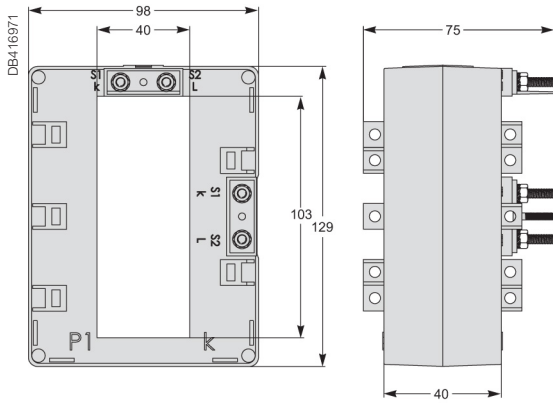
DD internal profile type



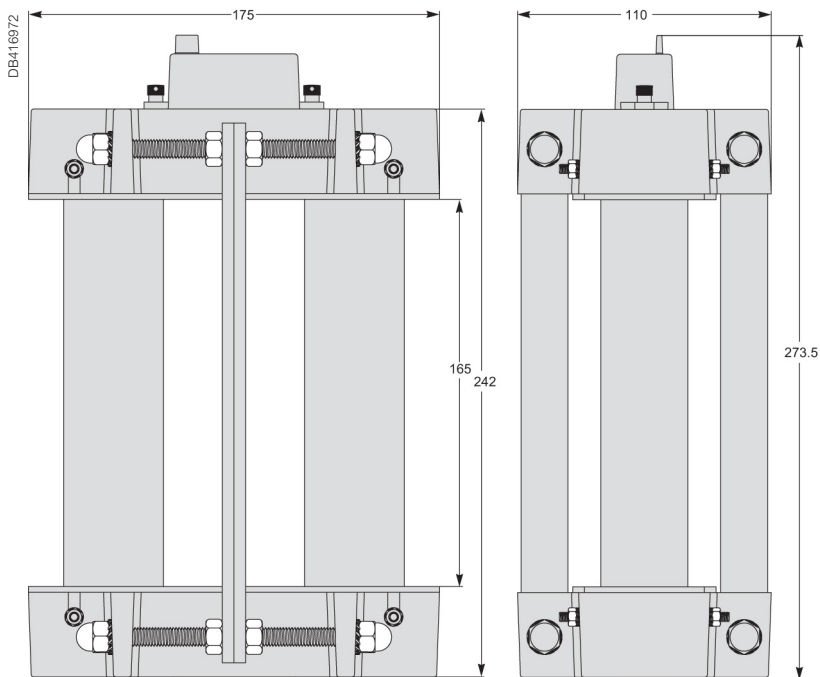
DE internal profile type



DH internal profile type



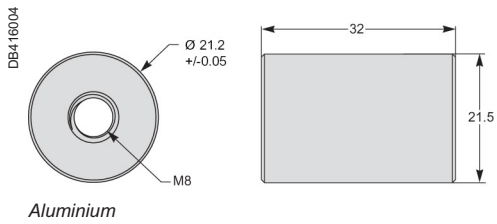
VV internal profile type



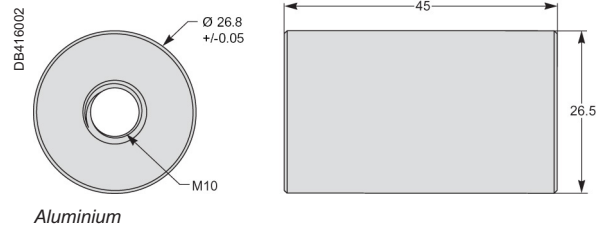
Solid core cylinders dimensions

Cylinders

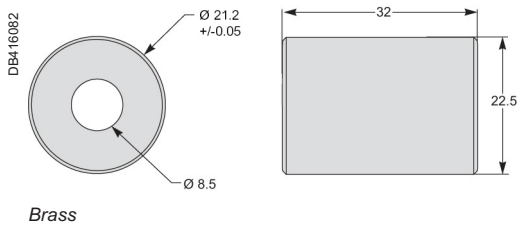
METSECT5CYL1



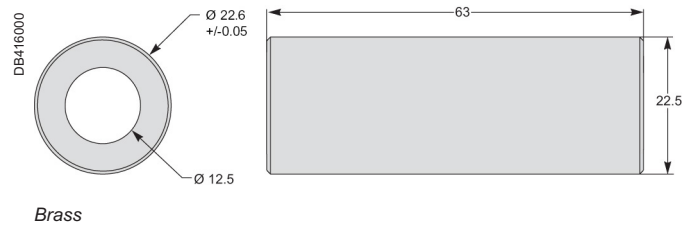
METSECT5CYL2



16550

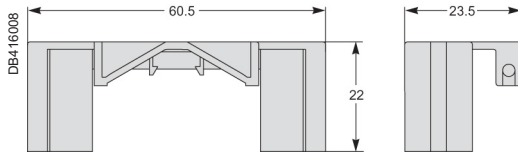


16551



Covers

METSECT5COVER



See the appropriate **Installation Guide** for correct installation instructions.

Split core CTs

These current transformers from Schneider Electric are a comprehensive offer, ideally suited throughout the entire low voltage network, from 100 A to 4000 A. They deliver secondary current (0-5 A) proportional to the current measured at the primary. They can be used in combination with measurement devices (switchboard instrumentation, Ammeters, kilowatt-hour meters, power-monitoring units, control relays etc.). CTs with low VA burden allows them to be used in combination of measurement equipments.

The solution for

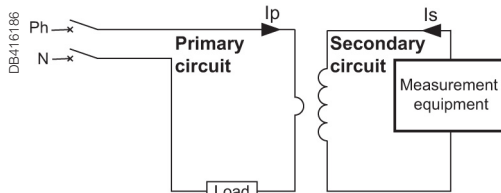
- Perfect for new and existing installations and expansion projects in a variety of markets:
- Commercial buildings
- Industrial facilities
- Medical facilities
- Data centers
- Education
- Oil & Gas

Benefits

- Installation: on symmetrical DIN rail, on mounting plate, on busbar
- Well adapted CT as the accuracy class is better than rated accuracy
- Current Transformers for coaxial cable (input range 100 A to 1000 A)
- Current Transformers for bus bar (input range 100 A to 4000 A)
- Current Transformers for cable or bar profile
- Compact size suitable for different sizes of conductors
- Tropicalized rating for harsh environmental condition
- Adaptable for different conductor profile and primary current intensity

$I_p/5$ A ratio

When the primary is energized, the measurement equipment nearly acts as a short circuit which keeps the secondary voltage very low. This voltage will increase significantly if the short circuit is removed. Hence, always keep the secondary circuit connected to low impedance path or current signal terminals of the measuring instrument.



Application diagram of a CT.

I_p - Primary Current

I_s - Secondary Current

Features

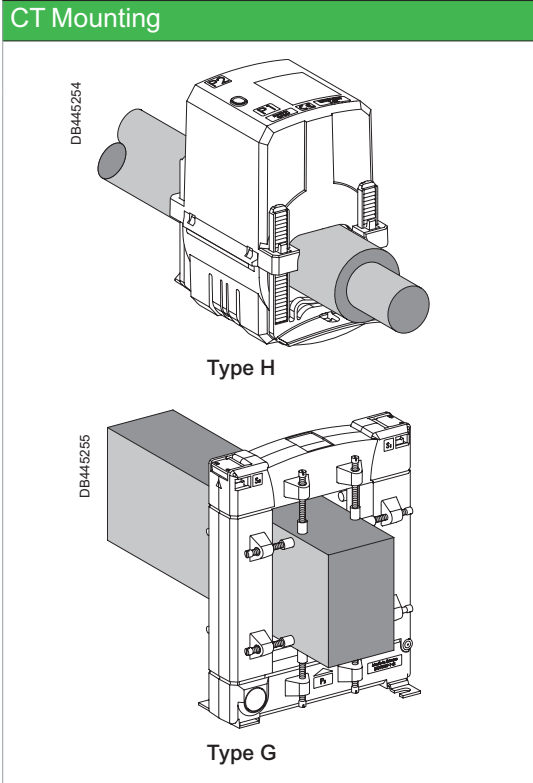
- A broad selection of ratings: from 100 A to 4000 A I_p with 120% max. range
- Split core design allows for CT installation without the need to uninstall and reinstall power conductor
- The split core CTs are designed for easy fit and assembly into existing installations, without separating the primary conductor.
- Click-system and fixing clasps allow single-handed mounting
- Fully compatible with Schneider Electric's complete portfolio of industry leading metering products as well as Third Party measurement devices.
- Safety through sealable insulating cover
- Compliance with IEC measurement standards with accuracy class ranges from Class 0.5 to Class 3
- Higher safety factor during installation and for facility
- For indoor use

Conformity of standards

- BS / EN 61869-1:2009
- BS / EN 61869-2:2012
- BS / EN 63000:2018
- VDE 0414
- Green Premium Ecolabel
- CE / UKCA certified
- EAC, Metrology

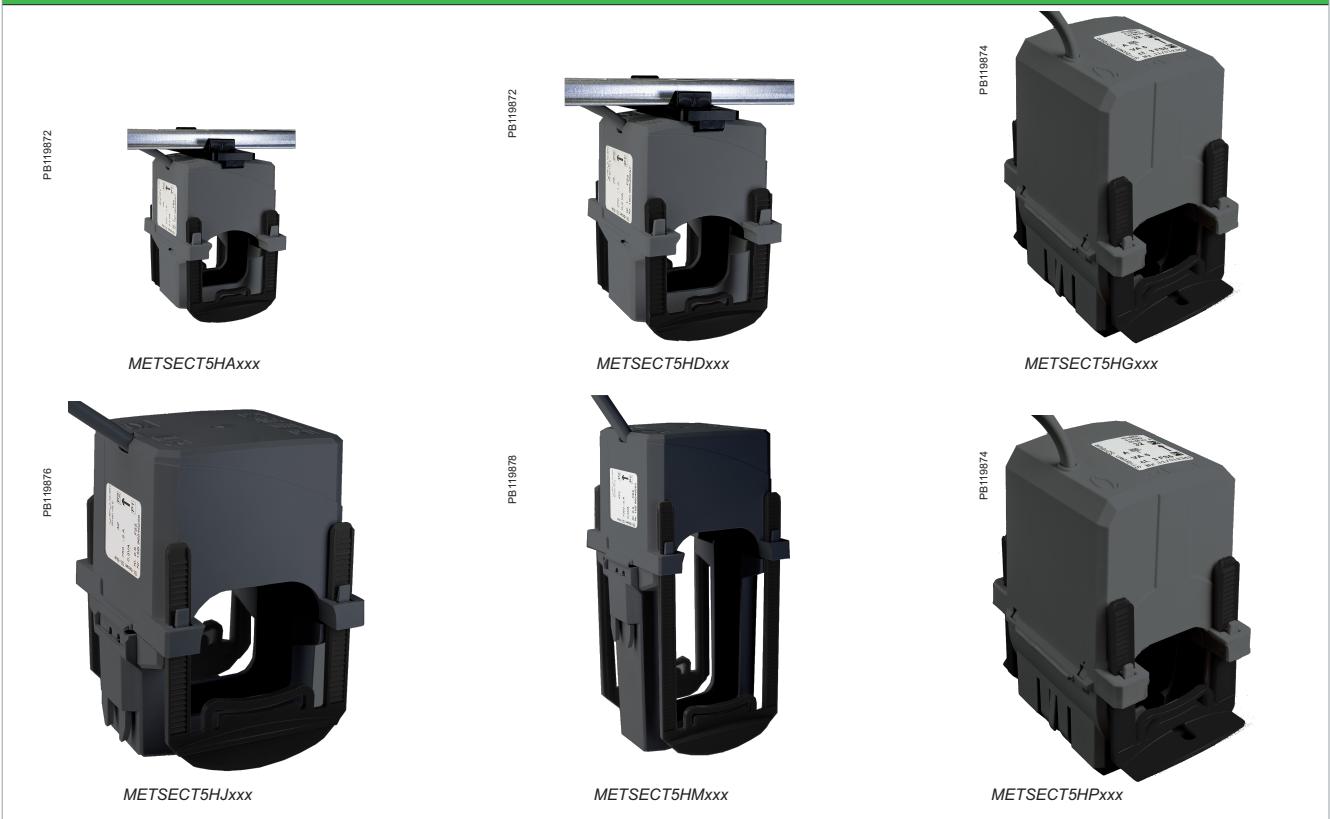
Split Core CTs

Mounting method



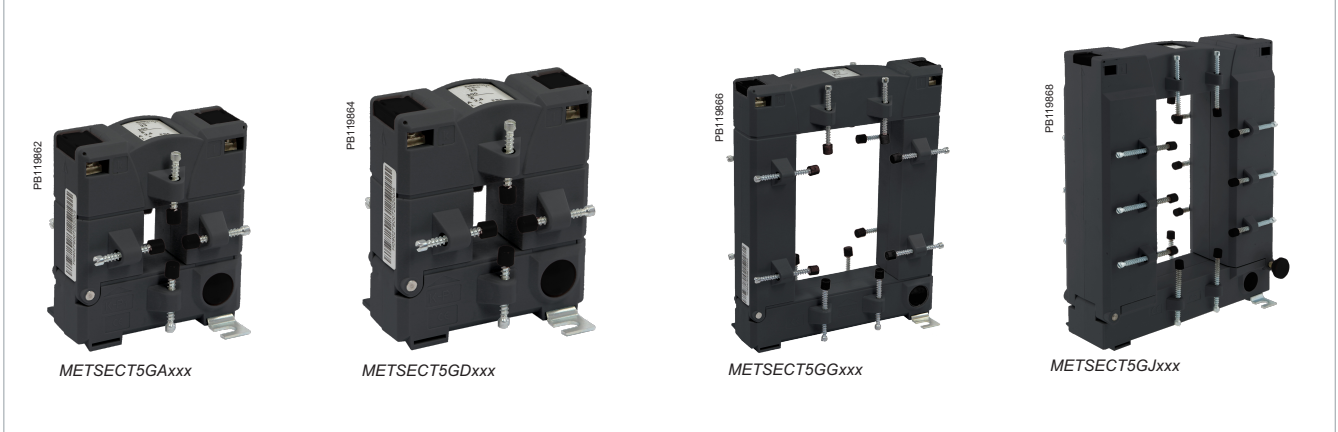
General characteristics	
Secondary current I_s (A)	5 A (S1- S2 terminals)
Maximum voltage rating U_e (V)	720 V
Dielectric strength test	3 kV, 50 Hz for one minute
Frequency (Hz)	50/60 Hz nominal (47 - 63 Hz)
Instrument security/ safety factor (FS/sf)	upto 1000 A: FS \leq 5 \geq 1000 A: FS \leq 10
Rated short time thermal current (I_{th})	60 times the I_p current for 1 s (max 60 kA)
Rated dynamic current (I_{dyn})	2.5 I_{th}
Degree of protection	IP20
Operating temperature	Tropicalised range: -5 to +60 °C Relative humidity: 5 % to 85 %
Storage temperature	-25°C to +70°C
Compliance with standards	BS / EN 61869-1:2009, BS / EN 61869-2:2012, BS / EN 63000:2018 VDE 0414
Secondary connection (as per model)	by terminals for lug or by tunnel terminals or by screws
Pollution degree	2
Installation category	III
Insulation class	E
Altitude	\leq 3000 m (9843 ft)

Type H











Split Core CTs

Type G




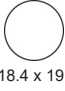









Commercial reference scheme

CT with let-through primary	CT internal type	Internal profile type and dimension in mm	Ip/5 A rating (A) ^(*)	Accuracy class VA rating			CT Commercial reference			
				0.5	1	3				
Type G - split core CT (bus bar)										
 PB119862	GA	 FF V2 23 x 33	100	-	-	1.25	METSECT5GA010			
			150	-	-	1.5	METSECT5GA015			
			200	-	-	2.5	METSECT5GA020			
			250	-	1.5	-	METSECT5GA025			
			300	-	3.75	-	METSECT5GA030			
			400	1	-	-	METSECT5GA040			
 PB119864	GD	 FF V2 55 x 85	250	-	1.5	-	METSECT5GD025			
			300	-	2.5	-	METSECT5GD030			
			400	1	-	-	METSECT5GD040			
			500	2.5	-	-	METSECT5GD050			
			600	2.5	-	-	METSECT5GD060			
			750	2.5	-	-	METSECT5GD075			
			800	2.5	-	-	METSECT5GD080			
			1000	5	-	-	METSECT5GD100			
 PB119866	GG	 FF V2 85 x 125	250	-	1.5	-	METSECT5GG025			
			300	-	2.5	-	METSECT5GG030			
			400	-	2.5	-	METSECT5GG040			
			500	2.5	-	-	METSECT5GG050			
			600	2.5	-	-	METSECT5GG060			
			750	2.5	-	-	METSECT5GG075			
			800	2.5	-	-	METSECT5GG080			
			1000	5	-	-	METSECT5GG100			
			1200	5	-	-	METSECT5GG120			
			1250	7.5	-	-	METSECT5GG125			
			1500	7.5	-	-	METSECT5GG150			
			 PB119868	GJ	 FF V2 85 x 165	1000	10	-	-	METSECT5GJ100
						1200	10	-	-	METSECT5GJ120
1500	10	-				-	METSECT5GJ150			
1600	10	-				-	METSECT5GJ160			
2000	10	-				-	METSECT5GJ200			
2500	10	-				-	METSECT5GJ250			
3000	15	-				-	METSECT5GJ300			
4000	15	-				-	METSECT5GJ400			

(*) Maximum rated current (Imax) is 120% of the primary current (Ip).

Split Core CTs

Commercial reference scheme (contd.)

CT with let-through primary	CT internal type	Internal profile type and dimension in mm	Ip/5 A rating (A) ^(*)	Accuracy class VA rating			CT Commercial reference
				0.5	1	3	
Type H - split core CT (cable)							
PB119872 	HA	 18.4 x 19	150	-	1	-	METSECT5HA015
			200	-	1.5	-	METSECT5HA020
			250	1	-	-	METSECT5HA025
	HD	 27.9 x 27	250	-	1	-	METSECT5HD025
			300	-	1.5	-	METSECT5HD030
			400	-	2.5	-	METSECT5HD040
			500	1	-	-	METSECT5HD050
PB119874 	HG	 Ø32.5	100	-	-	1.5	METSECT5HG010
			125	-	-	2.5	METSECT5HG013
			150	-	-	3	METSECT5HG015
			200	-	-	3	METSECT5HG020
			250	-	-	3	METSECT5HG025
			300	-	2.5	-	METSECT5HG030
			400	-	5	-	METSECT5HG040
			500	-	5	-	METSECT5HG050
			600	-	5	-	METSECT5HG060
PB119876 	HJ	 42.4 x 43	300	-	2.5	-	METSECT5HJ030
			400	-	5	-	METSECT5HJ040
			500	-	5	-	METSECT5HJ050
			600	2.5	-	-	METSECT5HJ060
			750	2.5	-	-	METSECT5HJ075
			800	2.5	-	-	METSECT5HJ080
PB119878 	HM	 42.4 x 85	300	-	2.5	-	METSECT5HM030
			400	-	5	-	METSECT5HM040
			500	-	5	-	METSECT5HM050
			600	2.5	-	-	METSECT5HM060
			750	2.5	-	-	METSECT5HM075
			800	2.5	-	-	METSECT5HM080
PB119874 	HP	 Ø44	250	-	1.5	-	METSECT5HP025
			300	-	2.5	-	METSECT5HP030
			400	-	5	-	METSECT5HP040
			500	-	5	-	METSECT5HP050
			600	-	5	-	METSECT5HP060
			750	-	5	-	METSECT5HP075
			800	-	5	-	METSECT5HP080
			1000	-	5	-	METSECT5HP100

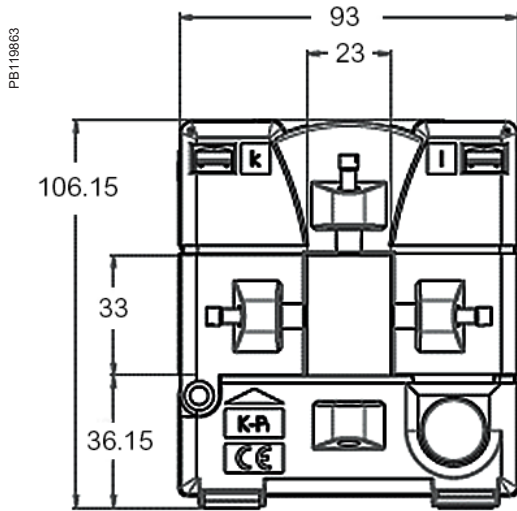
* Maximum rated current (Imax) is 120% of the primary current (Ip).

Please contact your Schneider Electric representative for complete ordering information.

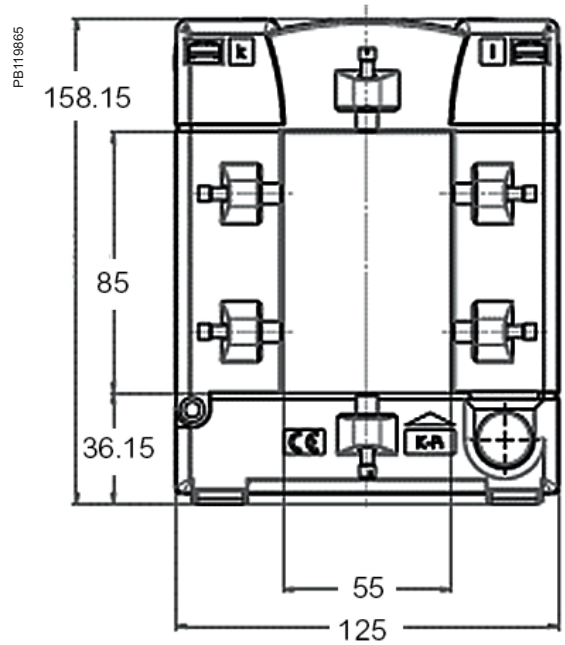
Split core CT dimensions

Gx products

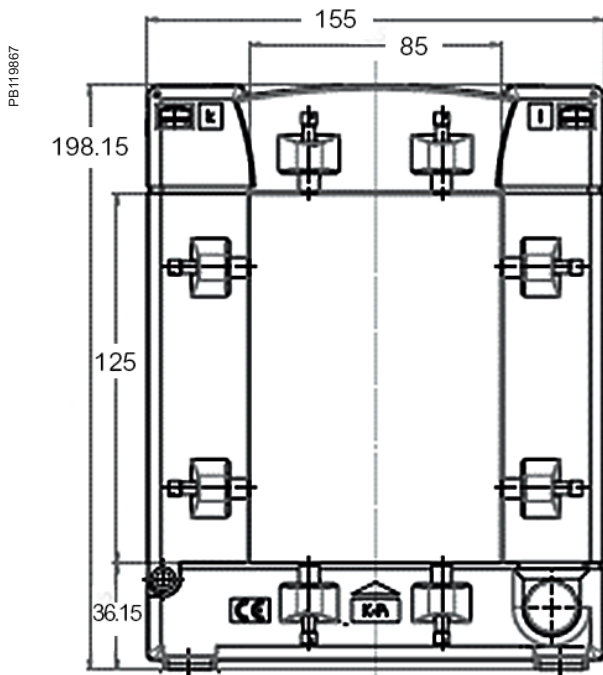
GA Dimensions



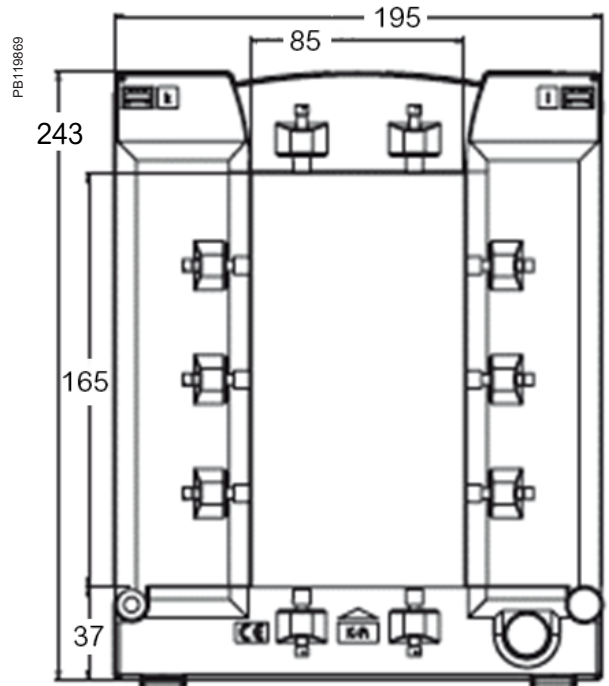
GD Dimensions



GG Dimensions



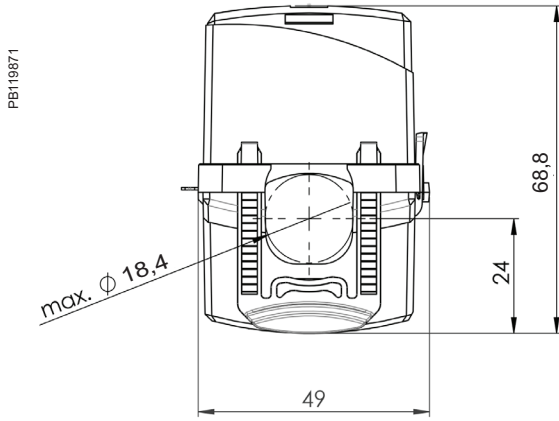
GJ Dimensions



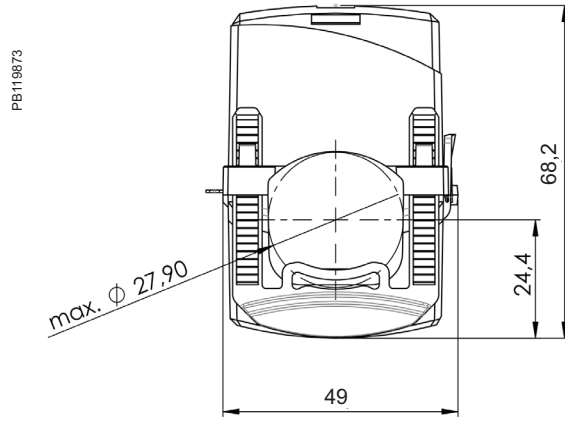
Split core CT dimensions (contd.)

Hx products

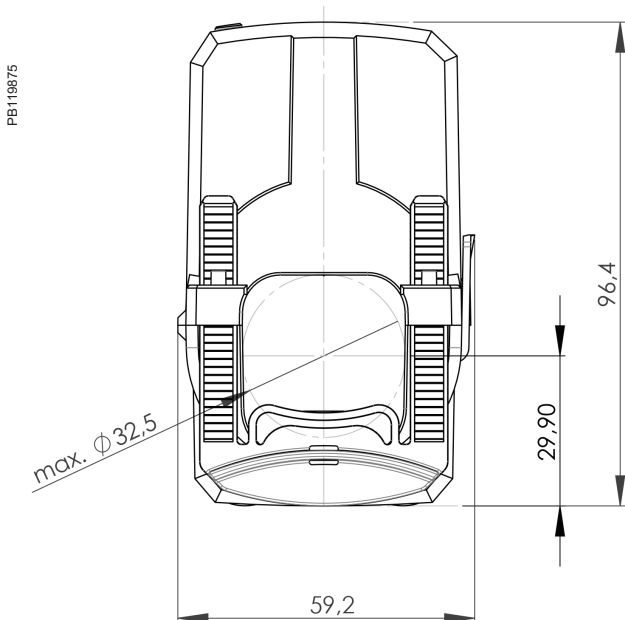
HA Dimensions



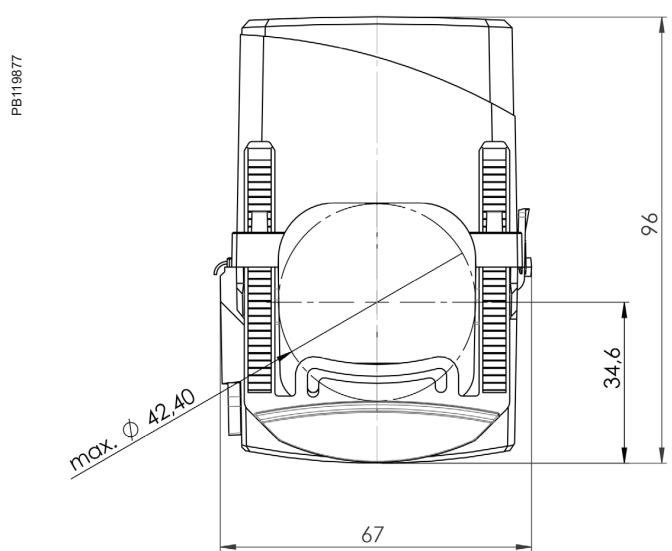
HD Dimensions



HG Dimensions



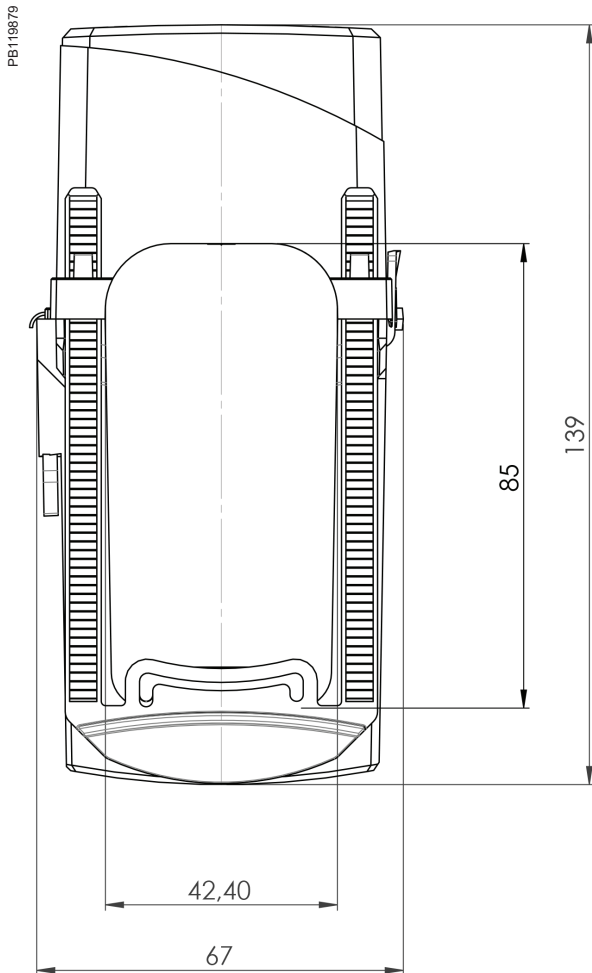
HJ Dimensions



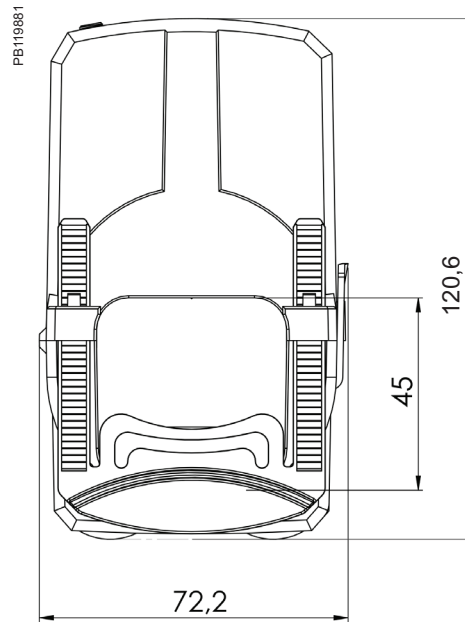
Split core CT dimensions (contd.)

Hx products

HM Dimensions



HP Dimensions



See the appropriate **Installation Guide** for correct installation instructions.



www.se.com

Schneider Electric Industries SAS
35, Rue Joseph Monier
CS 30323
92506 Rueil Malmaison Cedex

RCS Nanterre 954 503 439
Capital social 928 298 512 €
www.se.com

September 2025
PowerLogic™ Current Transformers
PLSED310169EN

© 2025 - Schneider Electric. All rights reserved.
All trademarks are owned by Schneider Electric
Industries SAS or its affiliated companies.

As standards, specifications and designs develop from time to time,
please ask for confirmation of the information given in this document.