

en zh



Wiser by SE app



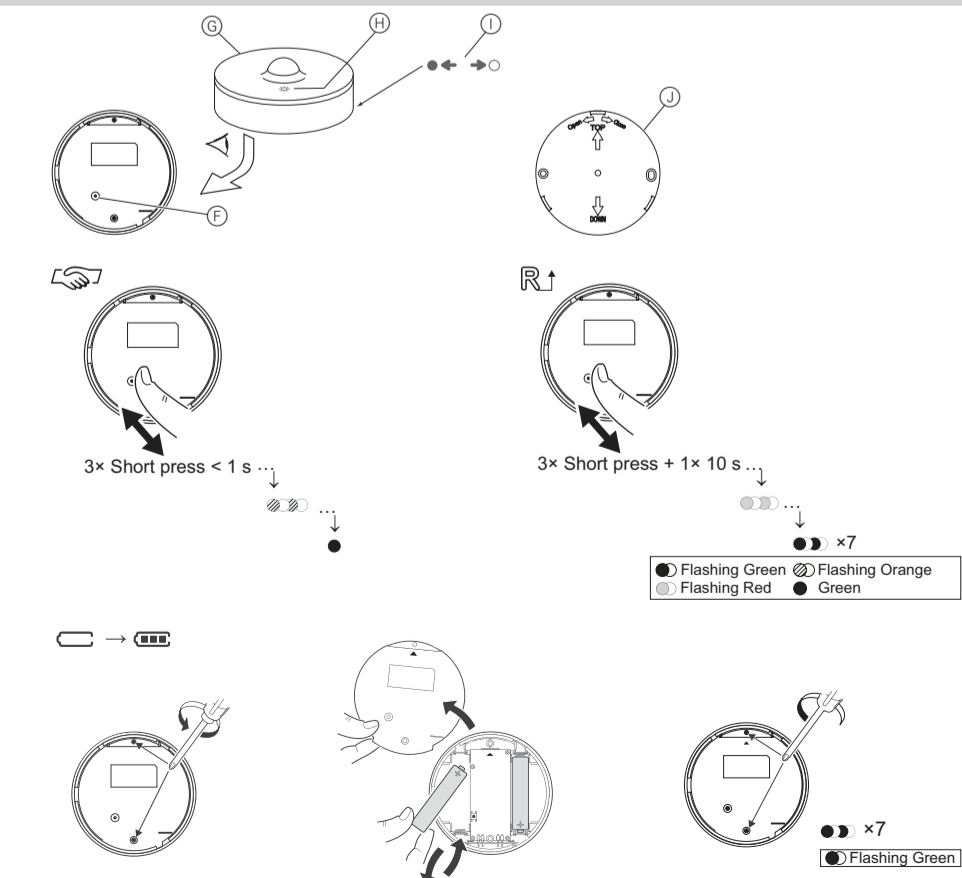
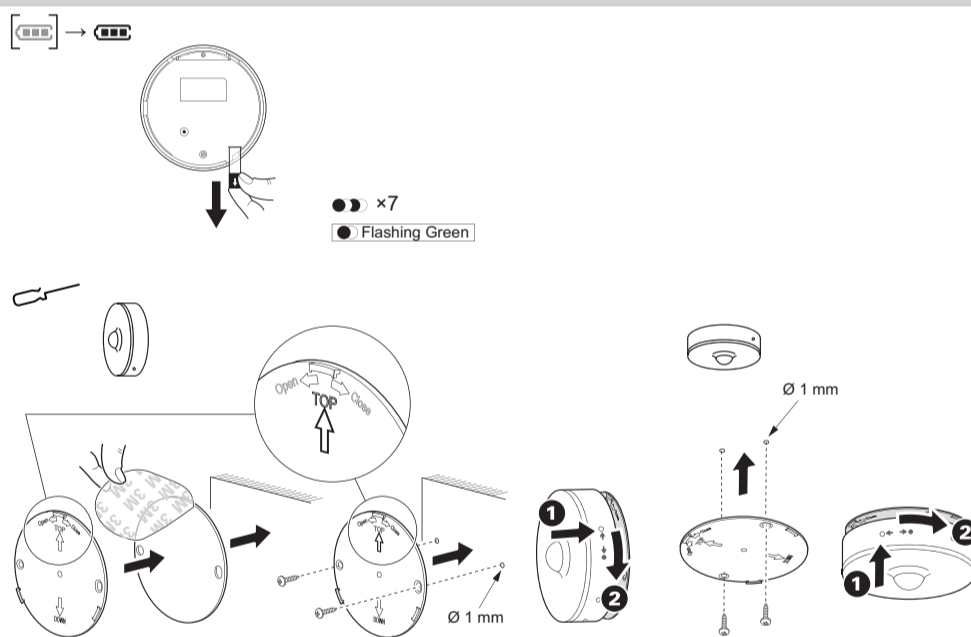
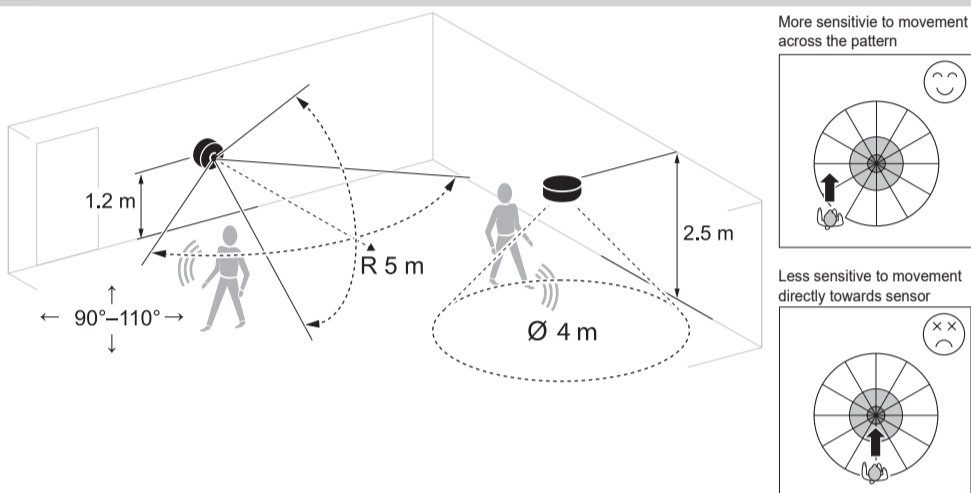
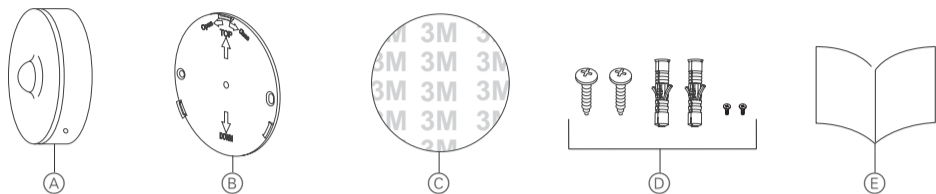
CCT595011\_AS

Wiser

Schneider Electric



Works with Wiser Hub CCT501900. Refer to system user guide for more information: [https://download.schneider-electric.com/files?p\\_Doc\\_Ref=MFR1569800](https://download.schneider-electric.com/files?p_Doc_Ref=MFR1569800)



en

Wiser Motion Sensor

CCT595011\_AS

### For your safety

#### NOTICE

##### RISK OF DAMAGE TO DEVICE

Always operate the product in compliance with the specified technical data.

Failure to follow these instructions can result in equipment damage.

### Prerequisites

Scan the QR code to download the Wiser by SE app onto your smartphone to configure and control the Wiser Motion Sensor.



App Store URL: <https://itunes.apple.com/us/app/wiser-by-se/id1026806919?ls=1&mt=8>



Google Play Store URL: <https://play.google.com/store/apps/details?id=com.schneiderelectric.WiserBySE>

### Getting to know the product

The Wiser Motion Sensor reports the detection of movement to the Wiser Hub (and actuator to perform configured functions), measures the luminance of the environment and passes this data to the Wiser Hub. The threshold of luminance settings and/or detection of movement can be programmed to determine what action to be taken at that moment.

When the sensor is connected to the Wiser ZB/IP Hub, it directly reports motion detection data to the Hub.

When the battery is low (less than 10%), the status LED blinks orange once per minute, and a message is sent to the Wiser Hub.

### Package contents

- A) Motion sensor
- B) Base plate
- C) Adhesive pads
- D) 4 Screws (2 x ST2 x 5 mm, 2 x ST3 x 22 mm), 2 wall plugs
- E) Installation instructions

### Choosing the mounting location

The sensor can be mounted on a wall or ceiling to provide desired coverage:

- Ceiling mount provides a 360° detection angle with a maximum range of 4 m diameter.
- Wall mount provides a detection angle of 90° to 110° horizontal and vertical with a maximum range of 5 m radius.



- Do not install the sensor in a place where there is strong sunlight or wind (for example, close to ventilation).
- When the ambient temperature is >32 °C, the sensor's ability to measure sensitivity, detection range and detection angle is degraded.

### Walking Direction

As a PIR sensor, Wiser Motion Sensor is more sensitive to the movement across the different patterns. Oppositely Wiser Motion Sensor is less sensitive to the movement directly towards to sensor and range will be reduced.

### Mounting the sensor

#### Removing the battery isolation strip

#### Mounting



- For wood or plastic surfaces, use either the adhesive pads or the mounting screws.
- If using screws, pre-drill a 1 mm hole.
- For metal surfaces, use the adhesive pads only.

### Operating elements

- F) Function key
- G) Sensor
- H) Status LED
- I) Base plate lock/unlock instruction:
  - Turn to lock into base plate
  - Turn to unlock from base plate
- J) Base plate

### Setting the sensor



Remove the sensor from the base plate to access the function key (F).

#### Connecting to the Wiser Hub

- Short press the function key 3 times within 1 s. The sensor scans for the available Zigbee network. The status LED turns green if the sensor successfully connects to the Wiser Hub.
- Follow the instructions in the Wiser by SE app to set the sensor parameters through the Wiser Hub.

#### Resetting the sensor

Short press the function key 3 times within 1 s and then long press the function key once for >10 s to reset the sensor to factory default mode. All configuration data, user data, and network data is deleted.

#### Replacing the batteries

When refastening the battery cover make sure the triangle marks on the battery cover and PCBA align.

#### Behaviour of the status LED

Refer to the system user guide.

#### Troubleshooting

Refer to the system user guide.

### Technical data

Battery	3 VDC, LR03 AAA x2
Battery life	Up to 5 years (may vary based on the usage, frequency of firmware update and environment)
Power rating	≤90 mW
Max transmitted power	≤7 dBm
IP rating	IP20
Frequency range	2405 MHz to 2480 MHz
Operating temperature	-10 °C to 50 °C
Relative humidity	10% to 95%
Lux measurement range	0 lx to 2000 lx
Lux resolution	1 lx
Dimensions	Ø 75.0 × 26.6 mm
Standards	EN 60669-2-5 IEC 60669-2-5
Certification	CE compliant Zigbee 3.0 compliant

#### Ceiling mounted at 2.5 m

Detection angle	360°
Detection range	4 m diameter

#### Wall mounted at 1.2 m

Detection angle	90° to 110° horizontal and vertical
Detection range	5 m in radius

#### Trademarks

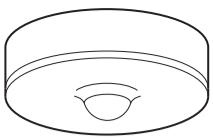
- Apple® and App Store® are brand names or registered trademarks of Apple Inc.
- Google Play™ Store and Android™ are brand names or registered trademarks of Google Inc.
- Zigbee® is a registered trademark of the Zigbee Alliance.

Other brands and registered trademarks are properties of their relevant owners.

### Schneider Electric Asia Pacific Limited

11th Floor, Kerry Centre, 683 King's Road, Quarry Bay, Hong Kong

[se.com/contact](http://se.com/contact)



en zh



Wiser by SE app



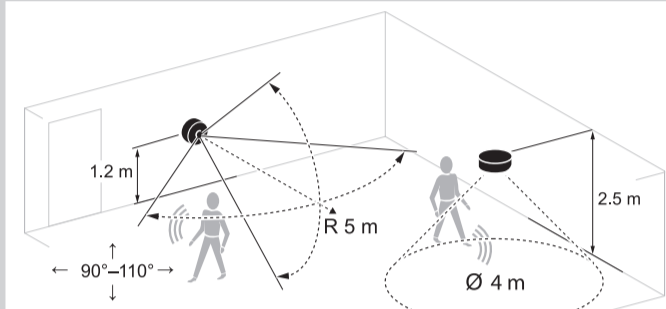
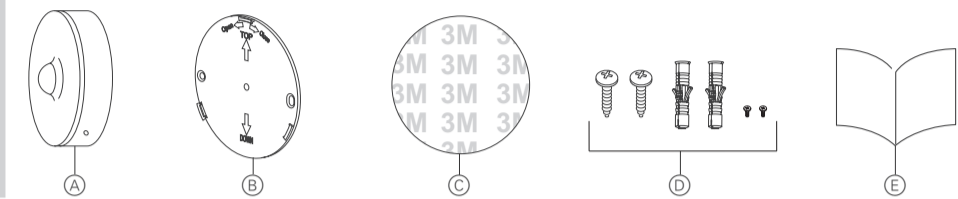
CCT595011\_AS

Wiser

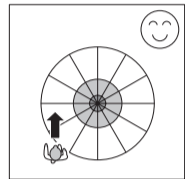


该产品与wiser网关CCT501900 或CCT501400\_C1 匹配工作请参考

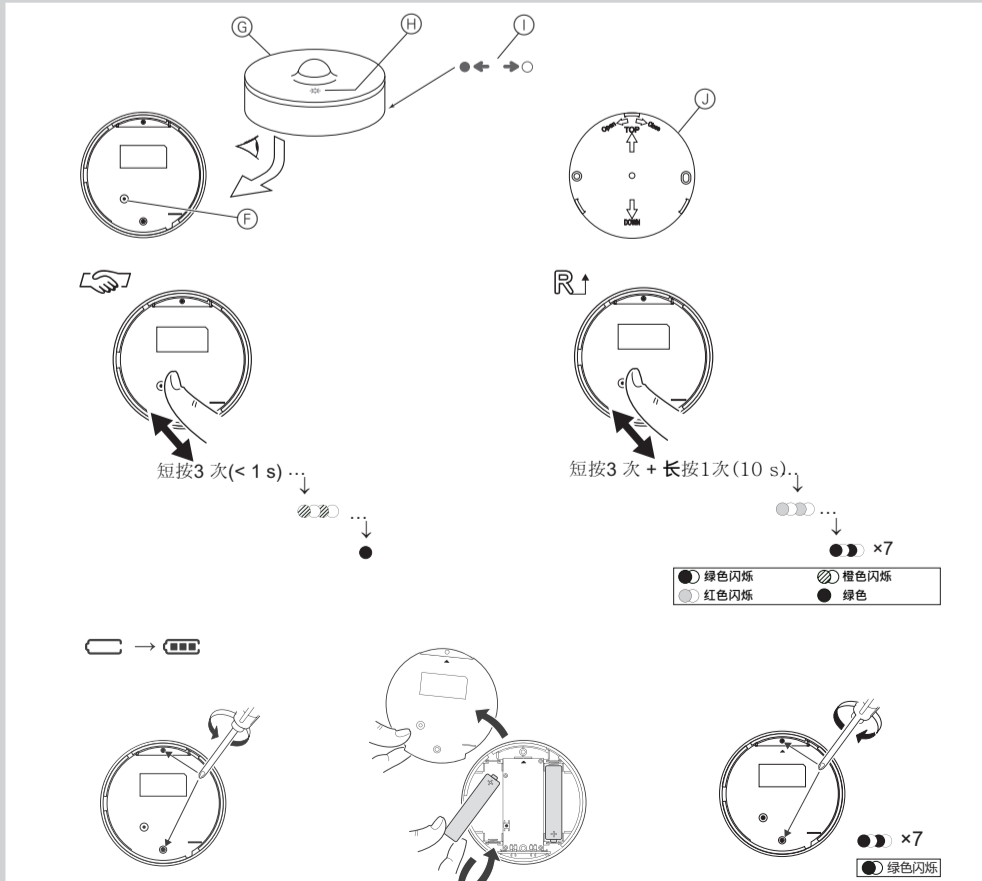
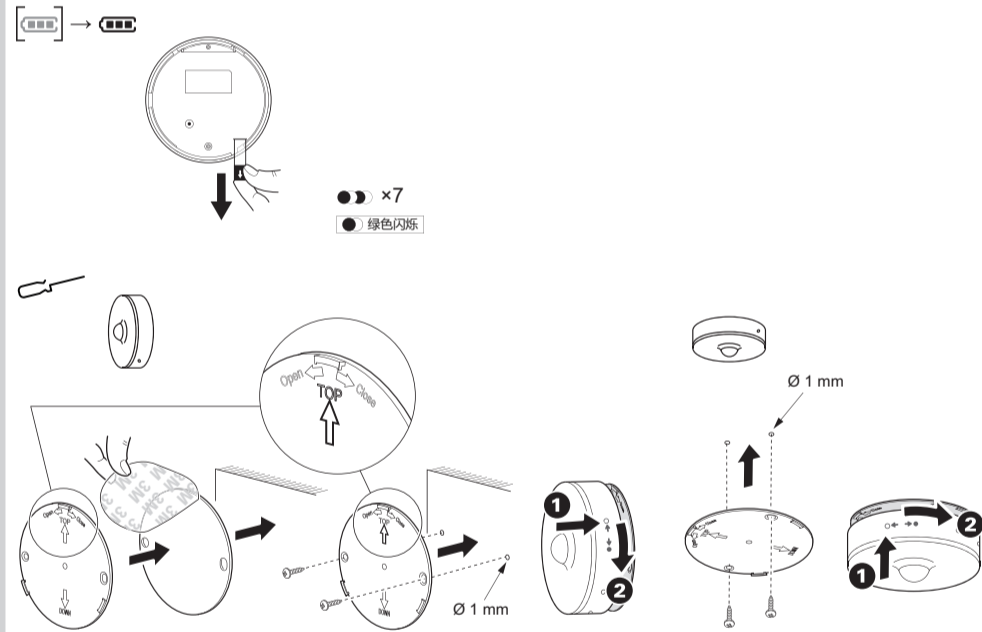
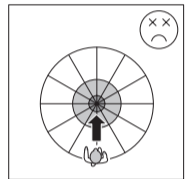
[https://download.schneider-electric.com/files?p\\_Doc\\_Ref=MFR1569800](https://download.schneider-electric.com/files?p_Doc_Ref=MFR1569800)



穿过不同的探测扇形区时灵敏度提高



正向朝着感应器移动时灵敏度降低



zh 智能人体传感器 CCT595011\_AS

### 安全提示

#### 注意

#### 设备损坏风险

请始终根据指定的技术数据操作产品。若不遵守此说明，则可能会导致设备损坏。

### 前提条件

扫描二维码下载 Wiser by SE app 到您的智能手机，以配置和安装智能人体传感器



App Store 的 URL: <https://itunes.apple.com/us/app/wiser-by-se/id1026806919?ls=1&mt=8>



Android Store 的 URL: <https://www.schneider-electric.cn/zh/product-range-download/65750-臻尚无线智能家居/#/software-firmware-tab>

### 产品简介

智能人体传感器会将感应到的人体移动，测量到的环境光亮度值上报到智能ZB/IP网关。设定的环境光亮度值阈值及人体移动的感应可以用来配置场景，选择要执行哪些相应操作。

当传感器连接到智能ZB/IP网关上，传感器将直接向Wiser ZB/IP网关报告运动检测数据。

若电池电量不足（低于 10%），LED 状态灯每分钟呈橙色闪烁一次，并向智能ZB/IP网关发送一条消息。

### 包装内容

- (A) 运动传感器
- (B) 底板
- (C) 3M胶
- (D) 4 螺钉 (2 颗: ST2 × 5 mm, 2 颗: ST3 × 22 mm), 2 塑胶套管
- (E) 安装说明书

### 选择安装位置

可将传感器安装在墙壁或天花板上，以提供所需的覆盖范围：

- 安装在天花板上，可提供 360° 的检测角度和最大直径为 4 m 的检测范围。
- 壁挂式安装可提供 90°- 110° 的水平和垂直检测角度，最大半径为 5 m。



- 不得将传感器安装在具有强烈阳光或强风的地方（例如：靠近通风口）。
- 当环境温度 >32 °C，时，传感器的检测灵敏度，其检测范围和检测角度均会下降。

### 人体移动朝向

作为采用红外技术的存在感应器，当人体穿过不同的探测扇形区时，智能人体传感器能更灵敏地探测到人体移动；相反，当人体正向朝着感应器移动时，智能人体传感器探测灵敏度和探测范围均会降低。

### 安装传感器

#### 取下电池隔离条

#### 安装



- 对于木质或塑料表面，可用3M胶或安装螺钉。
- 若用螺钉，则需预先打一个 1 mm 的孔。
- 对于金属表面，则仅使用3M胶。

### 操作元件

- (F) 功能键
- (G) 传感器
- (H) LED 状态灯
- (I) 底板锁定/解锁说明：
  - ← 转动以锁定底板
  - ○ 转动以解锁底板
- (J) 底板

### 设置传感器



取下底板上的传感器，以访问功能键 (F)。

#### 与智能ZB/IP网关连接

- 在 1 s 内快速按下功能键 3 次传感器可扫描可用的Zigbee网络。如果传感器成功连接到智能ZB/IP网关，则 LED 状态灯变为绿色。
- 按照 Wiser by SE app 中的指引，通过智能ZB/IP网关设置传感器参数。

#### 重置传感器

在 1 s 内快速按下功能键 3 次，随后长按功能键一次（适用于 >10 s），即可将传感器重置为出厂默认模式。

所有配置数据，用户数据和网络数据均被删除。

### 更换电池

当重新安装电池盖时，请确保电路板和盖板上的三角图标重合。

### LED 状态灯的行为

请参阅系统用户指南。

### 故障排除

请参阅系统用户指南。

### 技术参数

电池	3 VDC, LR03 AAA ×2
电池寿命	最多5 年（电池寿命可能会因使用类型，固件升级频率和环境而异）
额定功率	≤90 mW
最大传输功率	≤7 dBm
IP 等级	IP20
频率范围	2405 MHz - 2480 MHz
工作温度	-10 °C - +50 °C
相对湿度	10% - 95%
Lux测量范围	0 lx - 2000 lx
Lux分辨率	1 lx
尺寸	Ø 75.0 × 26.6 mm
标准	符合 EN 60669-2-5 标准 符合 IEC 60669-2-5 标准
认证	符合 CE 标准 符合 Zigbee 3.0 标准

#### 安装在 2.5 m 高的天花板上

检测角度	360°
检测范围	直径为 4 m

#### 安装在 1.2 m 高的墙上

检测角度	90° - 110° 水平和垂直
检测范围	半径为 5 m

部件名称 Part Name	有害物质				
	铅 Pb	汞 Hg	镉 Cd	六价铬 Cr(VI)	多溴联苯 PBB 多溴二苯醚 PBDE
金属件 Metal parts	x	o	o	o	o
塑胶件 Plastic parts	o	o	o	o	o
电子件 Electronic	x	o	o	o	o
触点 Contacts	o	o	o	o	o
线缆和线缆附件 Cables and cabling accessories	o	o	o	o	o

本表格依据 SJ/T11364 的规定编制。

o: 表示该有害物质在该部件所有均质材料中的含量均在GB/T 26572 规定的限量要求以下。

x: 表示该有害物质至少在该部件的某一均质材料中的含量超出 GB/T 26572 规定的限量要求。

This table is made according to SJ/T 11364.

o: indicates that the concentration of hazardous substance in all of the homogeneous materials for this part is below the limit as stipulated in GB/T 26572.

x: indicates that concentration of hazardous substance in at least one of the homogeneous materials used for this part is above the limit as stipulated in GB/T 26572.

### 商标

- Apple® 和 App Store® 是 Apple Inc. 的品牌名称或注册商标。
- Android™ 是 Google Inc. 的品牌名称或注册商标。
- Zigbee® 是 Zigbee Alliance 的注册商标。

所有其他商标和注册商标均为其各自所有者的财产。

### 施耐德电气(中国)有限公司

北京市朝阳区望京东路六号A座

客户支持热线: 400 810 1315

[se.com/contact](http://se.com/contact)