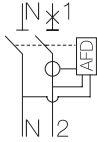


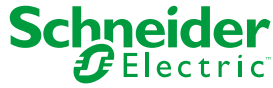
en zh

en Arc fault detection circuit breaker (AFDD).

zh 电弧故障保护电器



PHA3662800-01



PLEASE NOTE

- The installation, use, repair and maintenance of the electrical equipment must be carried out by qualified personnel only.
- All applicable local, regional and national regulations must be complied with during the installation and use of this device.
- This device should not be installed if, when unpacking it, you observe that it is damaged.
- Schneider Electric cannot be held responsible in the event of noncompliance with the instructions in this document and in the documents to which it refers.
- The service instruction must be observed throughout the product life time.

请注意

- 电气设备的安装、使用、检修和维护必须由符合资质的人员进行。
- 在安装和使用此设备时，必须遵守相关国家、地区和地方的规范。
- 如果打开包装发现设备已损坏，则不允许安装使用此设备。
- 如果不遵守此说明书和其他所提及文件中的指示，施耐德电气不承担任何责任。
- 整个产品使用期限内都必须遵守维修说明。

1 Installation - wiring / 安装 - 接线

⚠️ ⚠️ DANGER / 危险

HAZARD OF ELECTRIC SHOCK, EXPLOSION OR ARC FLASH

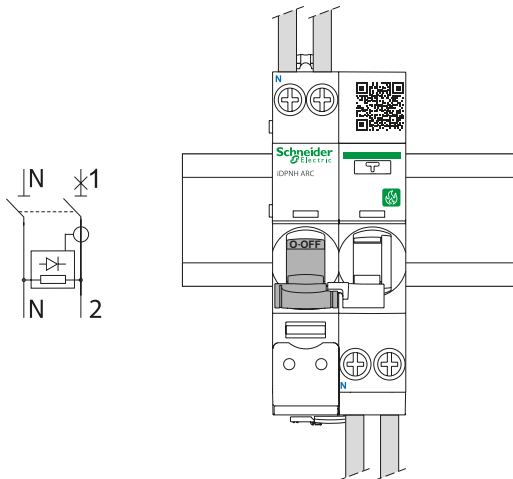
- Turn off all power supplying this device before working on it.
 - Use a voltage tester with a suitable rated voltage, in order to check that all active conductors aren't energized.
- Failure to follow these instructions will result in death or serious injury.**

可能有触电、爆炸或者电弧灼伤的危险

- 在操作设备之前，必须切断此设备的全部电源。
 - 应使用合适额定电压的电压测试仪以核实所有导体都没有通电。
- 不遵循上述说明将导致人员伤亡。**

en There is no insulation between the phase/Line and the neutral bottom terminals whatever the position of the toggles.

zh 无论产品手柄处于什么位置，相线或火线与中性极的下接线端子之间都没有绝缘。



14 mm	1...16 mm ²	1...16 mm ²

2 N.m	5.5 mm	PZ2

2 Dielectric test / 介电测试

NOTICE / 注意

RISK OF DAMAGE TO THE iDPN• ARC DEVICE

Disconnect all input and output wires to the iDPN• ARC device before performing an insulation resistance test (dielectric test).

Failure to follow these instructions can result in equipment damage.

iDPN• ARC 设备的损坏风险

在进行绝缘电阻测试（介电测试）之前，应断开与iDPN• ARC设备相连的所有输入和输出电线。

不遵循上述说明可能导致设备损坏。

3 Testing / 测试

⚠ WARNING / 警告

FIRE HAZARD

Run a self diagnostic test of iDPN• ARC after installing it, and then at regular intervals by pressing the Test button (marked T) for 1 second.

(see drawing below).

Failure to follow these instructions can result in death, serious injury,

or equipment damage.

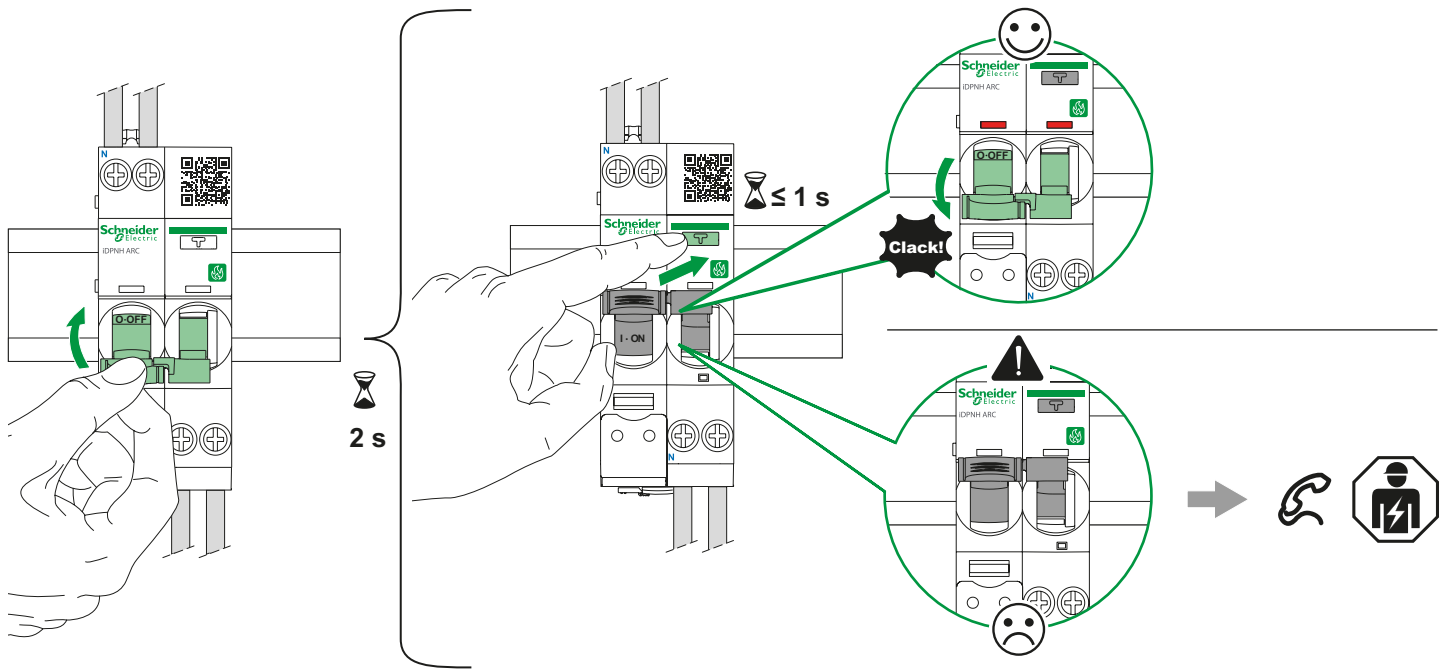
火灾危险

在iDPN• ARC安装好之后，应对其进行自诊断测试；随后，每隔一定时间应按下“测试”按钮（其标记为“T”）1秒钟进行测试。（见下图）。

不遵循上述说明可能导致人员伤亡或设备损坏。

en After turning the iDPN• ARC on, wait 2 seconds before pressing the test button.

zh 开启iDPN• ARC后，等待2秒钟再按下测试按钮。



⚠️ ⚠️ DANGER / 危险

HAZARD OF ELECTRIC SHOCK, EXPLOSION OR ARC FLASH

Disconnect all output wires prior to the diagnostic steps.

Failure to follow these instructions will result in death or serious injury.

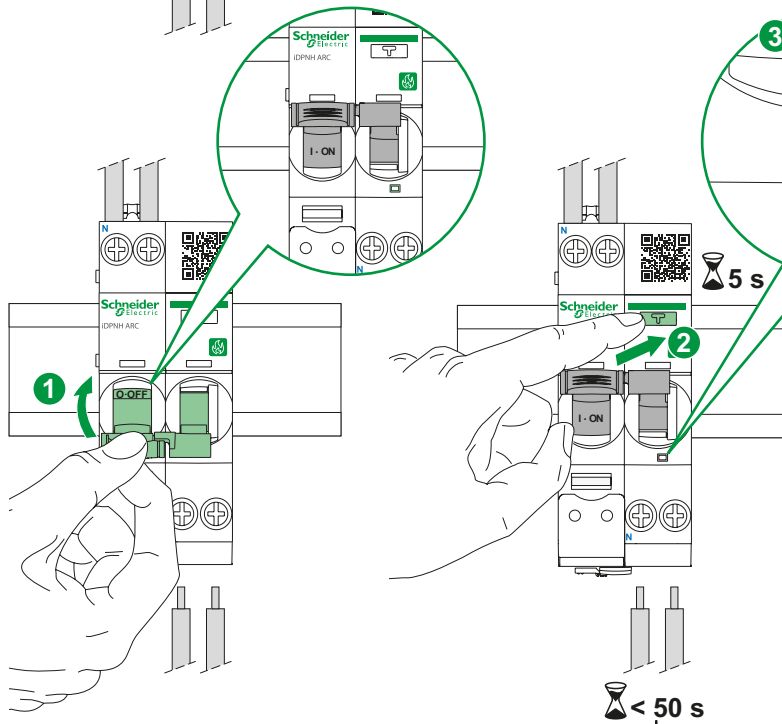
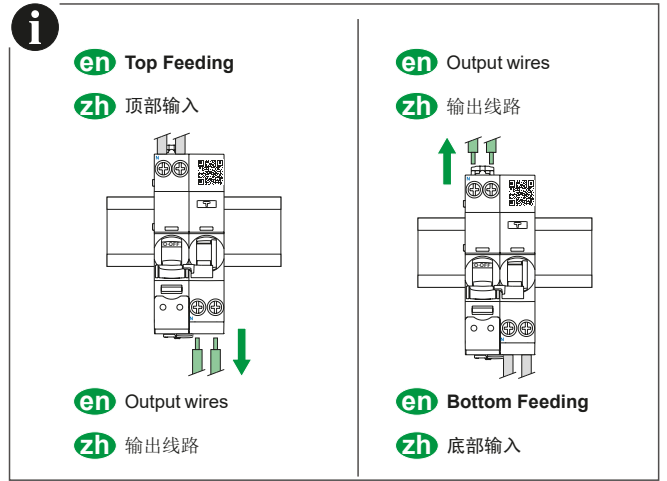
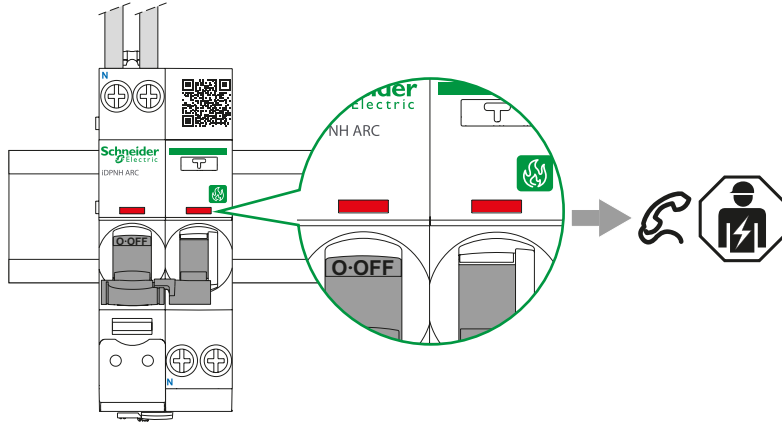
可能有触电、爆炸或者电弧灼伤的危险

执行诊断步骤前请切断所有输出线路。

不遵循上述说明将导致人员伤亡。

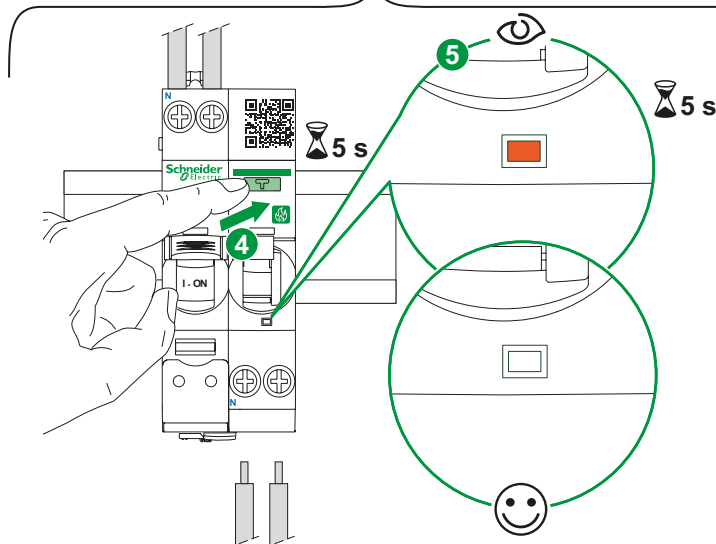
en After 60 seconds, the blinking sequence stops and the LED is continuously switched OFF.
Diagnosis operations are similar whether in top feed or bottom feed.

zh 60s后，LED将停止闪烁并保持关闭。
顶部输入和底部输入的诊断操作类似。



	x2 — 2 s — x2	
	x3 — 2 s — x3	
	x4 — 2 s — x4	
	x5 — 2 s — x5	
	x6 — 2 s — x6	

en Internal fault
zh 内部故障



	5 s
en	Reset diagnosis mode
zh	复位诊断模式

