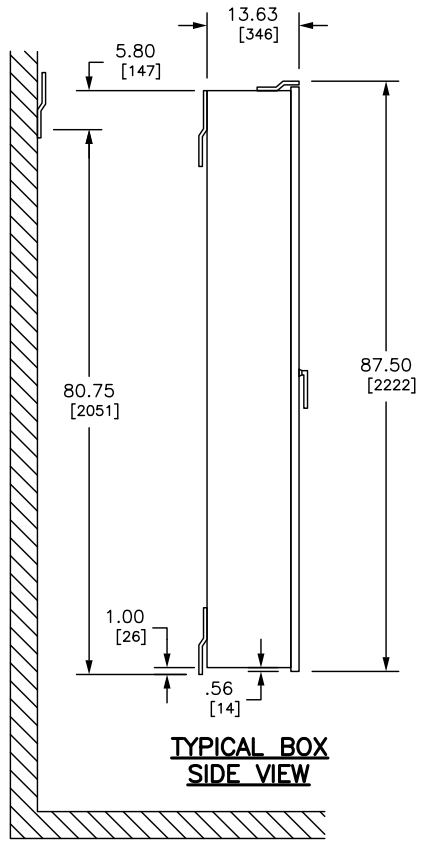
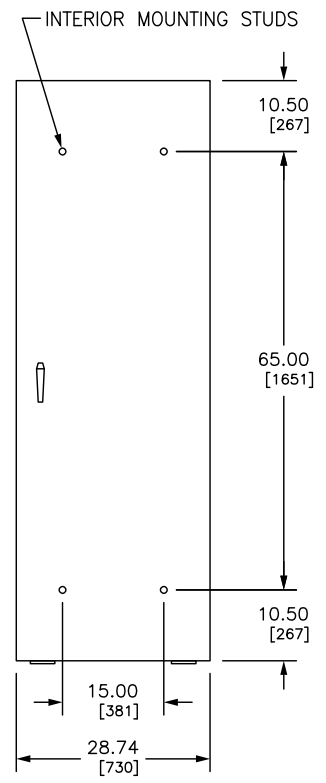


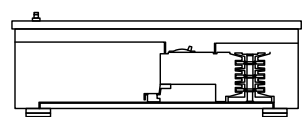
REV	DESCRIPTION	BY	DATE				
---	---	---	---	---	---	---	---



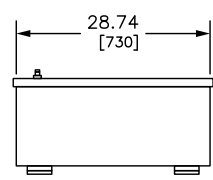
**TYPICAL BOX  
SIDE VIEW**



**TYPICAL FRONT VIEW**



**TYPICAL MOUNTING OF DG, DJ, DL, FA, FC, FD,  
FG, FH, FI, FJ, FK, FY, HD, HG, HJ, HL, JD,  
JG, JJ, JL, KA, KC, KH, KI, LA, LC, LE, LH,  
LXI, MG, MJ, NA, NC, NE, NX, PG, PJ,  
PK, PL, Q2, Q2H, Q2-H, QB,  
QD, QG, QJ, OR QO, BREAKERS**



**TYPICAL ENDWALL**

I-LINE HCP-SU PANELBOARDS MEET THE APPLICABLE REQUIREMENTS OF UL AND CSA.

BOX: GRAY BAKED ENAMEL FINISH ELECTRODEPOSITED OVER CLEANED PHOSPHATIZED STEEL. INCLUDES HINGED COVER. MOUNTS TO WALL WITH MOUNTING CHANNEL AND SWINGABLE MOUNTING BRACKET.

LOCK: CHROME-PLATED HANDLE LOCK. NSR-251 KEY CHANGE. NO PROVISIONS FOR PADLOCK.

■ REFER TO DP CATALOG CLASS 2110 FOR ADDITIONAL INFORMATION.

FOR NEMA TYPE 3R/12 ENCLOSURE FOR THE I-LINE HCP-SU PANELBOARD.

DUAL DIMENSIONS: INCHES MILLIMETERS

■ ENCLOSURE CATALOG NUMBER
HC2886WP

JOB NAME: ---	EQUIPMENT DESIGNATION: ---
JOB LOCATION: ---	EQUIPMENT TYPE: I-LINE HCP-SU TYPE 3R/12 ENCL
DRAWN BY: ---	DRAWING TYPE: ---
ENGR: ---	
DATE: JULY 2020	
DRAWING STATUS: ---	DWG# PBA417

