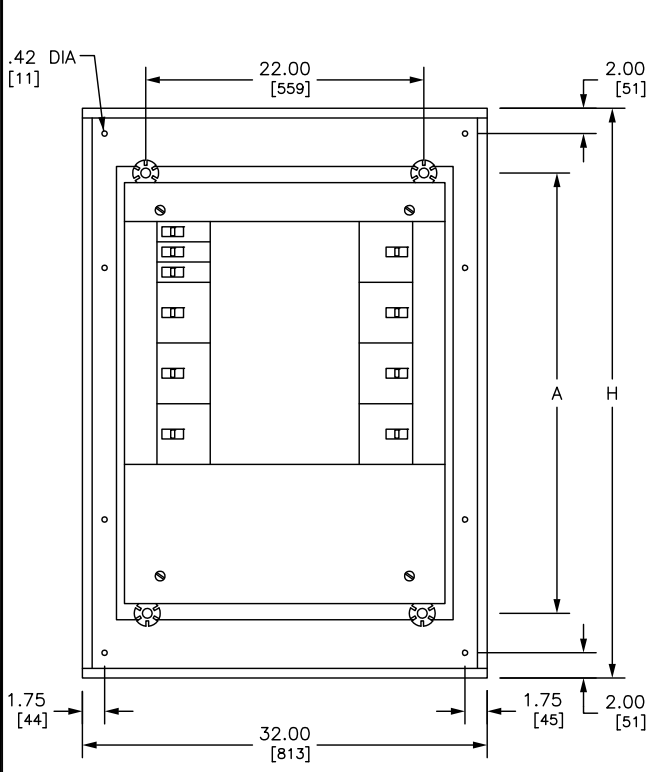
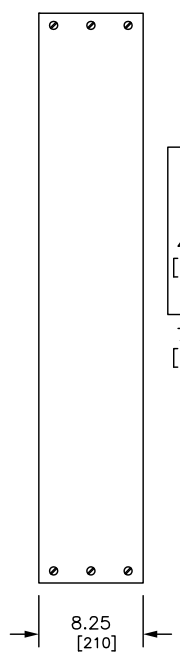


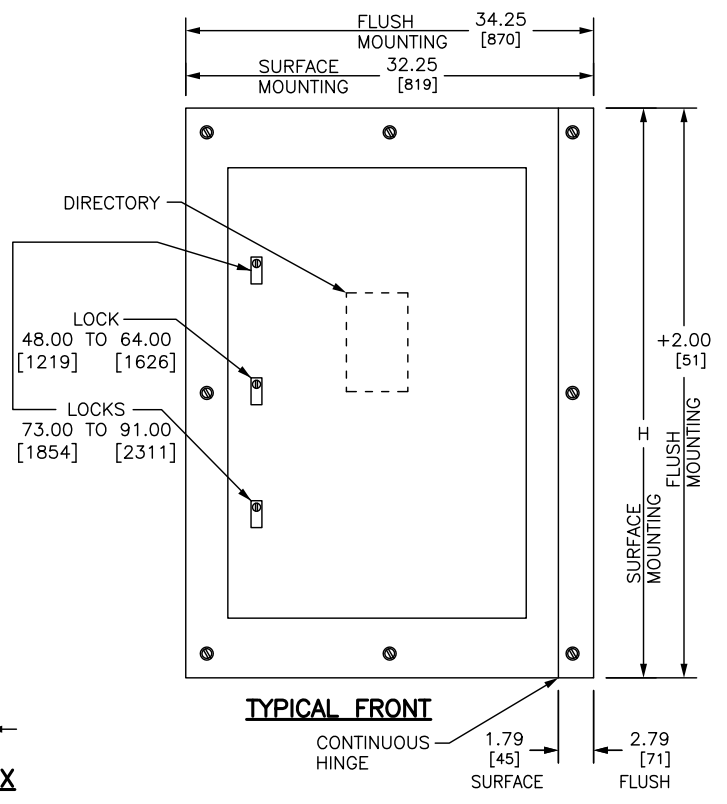
REV	DESCRIPTION	BY	DATE				
---	---	---	---	---	---	---	---



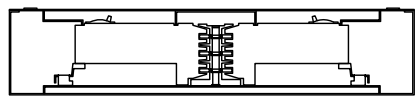
TYPICAL BOX WITH INTERIOR



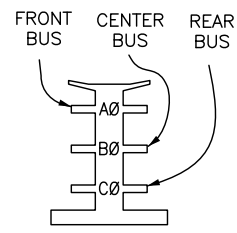
TYPICAL BOX SIDE VIEW



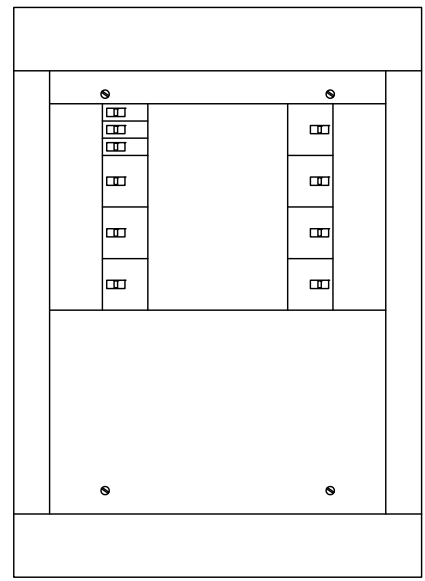
TYPICAL FRONT



TYPICAL MOUNTING OF BD, BG, BJ, BK, FA, FC, FD, FG, FH, FI, FJ, FK, FY, HD, HG, HJ, HL, JD, JG, JJ, JL, KA, KH, Q2, Q2H, Q2-H, QB, QD, QG, QJ OR QO BREAKERS



BRANCH CONNECTION PHASING IS DETERMINED BY CIRCUIT BREAKER SELECTION



TYPICAL SURFACE FRONT

(4 PIECE TRIM - NO DOOR)

REFER TO DP CATALOG CLASS 2110 FOR ADDITIONAL INFORMATION

I-LINE HCM PANELBOARDS MEET THE APPLICABLE REQUIREMENTS OF UL AND CSA.

BOX: CODE GAUGE GALVANIZED STEEL WITH REMOVABLE BLANK ENDWALLS.

FRONT: GRAY BAKED ENAMEL FINISH ELECTRODEPOSITED OVER CLEANED PHOSPHATIZED STEEL.

LOCK: (COVERS WITH DOORS) 48.00/[1219] - 64.00/[1626] HIGH FRONTS HAVE BRUSHED, STAINLESS STEEL FLUSH LOCK WITH NSR-251 KEY. 73.00/[1854] - 91.00/[2311] HIGH FRONTS HAVE (2) BRUSHED STAINLESS STEEL FLUSH LOCKS WITH NSR-251 KEY.

FOR NEMA TYPE 3R APPLICATIONS USE IN CONJUNCTION WITH PBA412.

DUAL DIMENSIONS: INCHES MILLIMETERS

MAXIMUM MLO OR BF-MCB AMPERE RATING	BRANCH BREAKER MOUNTING SPACE (INCHES)	H		A	
		IN	MM	IN	MM
225 THRU 800	27	48.00	1219	29.10	739
	45	64.00	1626	38.10	968
	63	73.00	1854	47.10	1196
	99	91.00	2311	65.10	1654

JOB NAME: ---	EQUIPMENT DESIGNATION: ---
JOB LOCATION: ---	EQUIPMENT TYPE: I-LINE HCM MLO OR BF-MCB
DRAWN BY: ---	DRAWING TYPE: ---
ENGR: ---	
DATE: MAY 2018	
DRAWING STATUS: ---	DWG# PBA402HR

