



Application Guide
115/240V Universal Shaver Unit

CAT. NO.
MGU5.054.XX

Unica

Thank you for choosing **Schneider Electric** Unica Universal Shaver Unit. To ensure proper application of our product, please read through the following information before installation and use.

This application guide applies to the following Unica product.



Cat No.	Description
MGU5.054.XX	115/240V Universal Shaver Unit

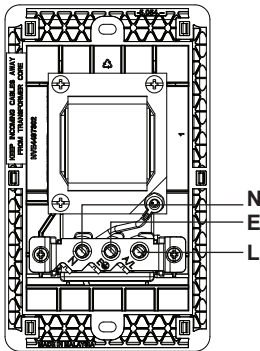
SPECIFICATIONS

Input Voltage	: 240 V~ 50/60Hz
Out Voltage	: 115/240V~
Amperage	: 20VA
Mounting Centre	: 120.6mm
Compliance	: IEC 61558-1 IEC 61558-2-5

IMPORTANT NOTE

1. Electrical installation must be carried out by a qualified electrician.
2. Please check your local wiring regulations before actual installation.

WIRING DIAGRAM

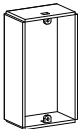


PRODUCT CARE

When cleaning, use a soft damp cloth / tissue to remove dust or dirt. Ensure the product is switched off during cleaning. **DO NOT USE** caustic cleaning agents.

MOUNTING INSTRUCTION

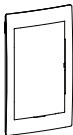
1. Align and place the Insert on the wall box.



2. Fasten with screws on both sides.

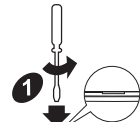


3. Assemble the Cover frame on the Insert, ensuring proper engagement by a clear "click" sound.



UNMOUNTING INSTRUCTION

1. To remove the Cover frame, carefully insert a screwdriver between the cover frame and the Wall surface. Then twist the screwdriver to dislodge the Cover frame from the Insert.



2. Use the other hand to support and remove the Cover frame.

