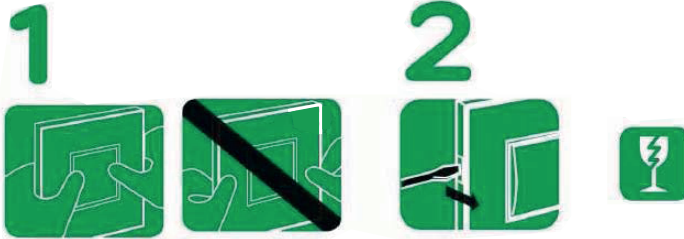


Made In Spain

Installation: Certified installer only

Storage Conditions: Store in a dry place

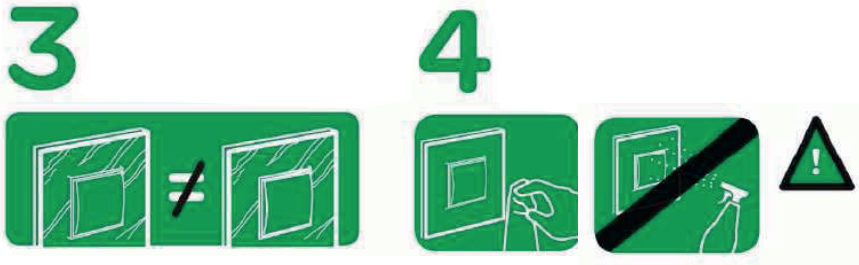
Purpose: household use



en

1) Assembly: Clip the outer plate in the holes of the fixing frame by pressing soft on the surface until the outer plate is aligned with the wall.

2) Disassembly: Leverage in a soft and balanced way with a flat-head screwdriver in the notch/es located in the sidesof the outer plate



en

3) Material: Metal, wood and slate outer plates are made of true natural material. As a consequence,outer plates made of a same material might show aesthetic differences on colour, seams, grain size, etc. For wood and slate,the surface seams and cracks are typical on these materials

4) Maintenance and cleaning: Do not use abrasive cleaners or cloths! Slate: use a soft dry cloth. Metal: use a soft cloth slightly dampened with water or neutral soap

Manufacturer: Schneider Electric España S.A.Ctra. Pamplona a Logroño, s / n - 31100 Puente la Reina