

Micro Module Switch

CLP5011-0001

Wiser Micro Module

Life Is On



- 1 Follow the installation instructions
 - 2 Download the Wiser Room App for your smartphone
 - 3 Connect your smartphone to the switch
 - 4 Must be installed and configured with a momentary push-button switch
- Wiser Room App



Download the Wiser Room App to connect your smart phone or tablet to the switch.

For your safety

⚠ ⚠ DANGER

HAZARD OF ELECTRIC SHOCK, EXPLOSION, OR ARC FLASH

- This product must be installed and serviced by appropriately qualified and/or licenced electrical personnel.
- Isolate the electrical supply before doing any work on this product.
- Ensure all terminals and live parts are suitably insulated from all mounting accessories.
- Ensure that the product has been correctly installed and tested for safe operation before reconnecting the electrical supply.

Failure to follow these instructions will result in death or serious injury.



⚠ CAUTION

EQUIPMENT DAMAGE HAZARD

- Install the device according to instructions in this document.
- Pay attention to the specifications and wiring diagrams related to the installation.
- Do not use this product for any other purpose than specified in this instruction.
- Dropping the device may damage the mech. Check device operates after being dropped or if physical damage is shown.

Failure to follow these instructions can result in injury or equipment damage.

NOTICE

EQUIPMENT DAMAGE HAZARD (LOAD AND OPERATION)

- Operation of micro module switch at elevated temperatures or voltages outside of specification (240 V a.c. and 25 °C) may cause the over-temperature protection circuitry to operate. Operating with significant overload may cause the thermal fuse to blow and render the unit inoperable.
- Reduce the size of the connected load or use a different brand of lamp to prevent recurrence.
- Do not operate the product for prolonged periods in extreme conditions.
- Product must be installed in an appropriate enclosure in accordance with AS/NZS 3000.

Failure to follow these instructions can result in equipment damage.

NOTICE

MAXIMUM POWER RATING APPLY

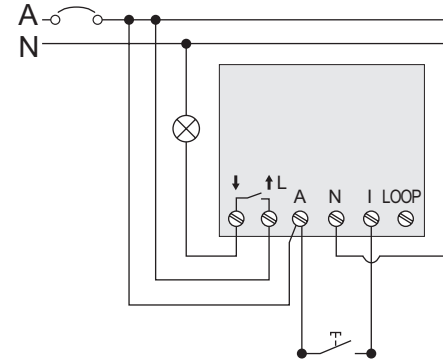
Ensure that the number of low voltage lighting transformers connected to a single switch does not exceed the maximum power rating.

Failure to follow these instructions can result in equipment damage.

Load rating

	Dimmable LED	200 W
	Non-dimmable LED	200 W
	Incandescent	10 A
	Motor	M.40 / 4.5 A
	Electronic transformer	1050 VA
	Iron core transformer	500 VA
	Fluorescent	10 A

Installation

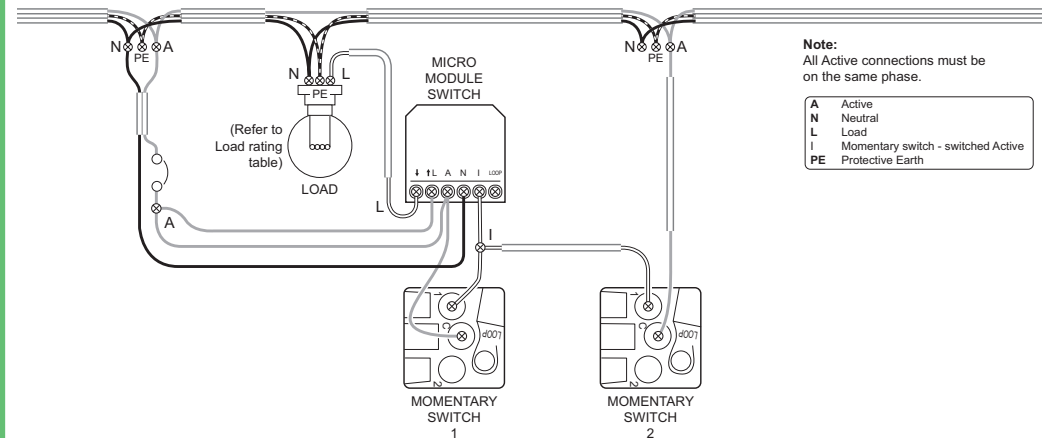


Note:

- This product **MUST** be installed with a Momentary Push-button Switch.
- The circuit must be protected from overloading in accordance with wiring rules.
- The product is not suitable for ceiling mounting.

Cabling and connections

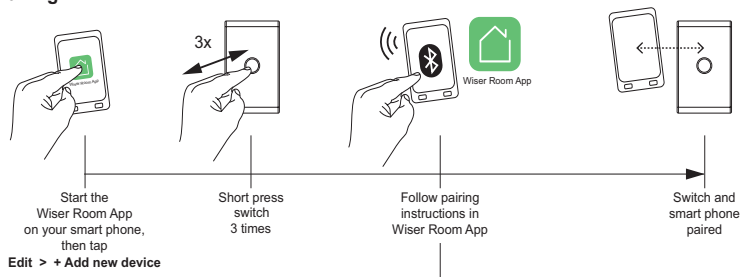
Typical 2-way installation using micro module switch and momentary push-button switches.



Note:
All Active connections must be on the same phase.

A	Active
N	Neutral
L	Load
I	Momentary switch - switched Active
PE	Protective Earth

Pairing



Configuration with the Wiser Room App

Use the Wiser Room App to customise the switch:

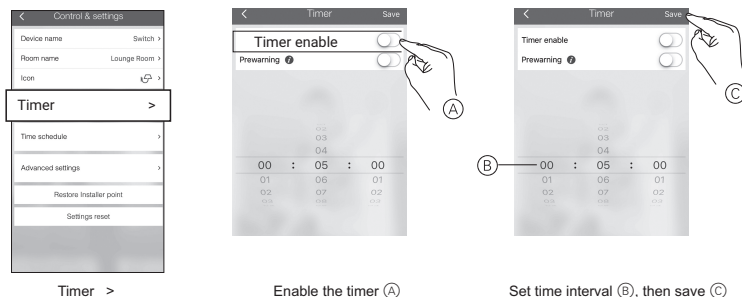
- Create an 'Installer restore point' to save settings in case a future restore is needed (**highly recommended**).
- 'Copy and paste' settings from another Wiser Micro Module switch to save time when configuring multiple switches, such as when installing in an apartment block.

If desired, use the Wiser Room App to set and adjust the timer.

NOTE: When controlling with the Wiser Room App be in the same room and within a range of 8-10 m of the switch. Range can be affected by walls and other structures.



Setting/Adjusting the timer



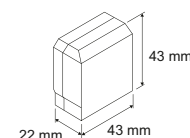
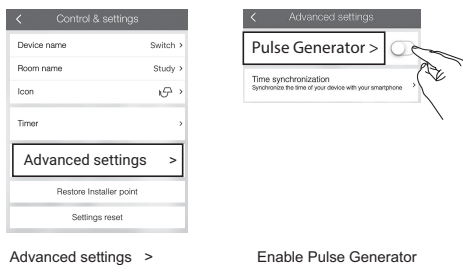
Switch Operation

Latching (default setting):

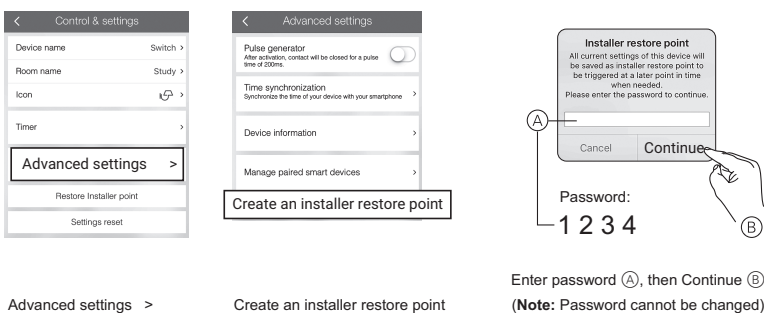
Pressing the momentary push-button or App once turns the switch **ON**, pushing it again turns the switch **OFF**.

Pulse generating:

In **Advanced Settings**, enable **Pulse Generator** mode. Then when a momentary push-button or App button is pressed, the load will be ON for 200 ms and then will switch **OFF**.

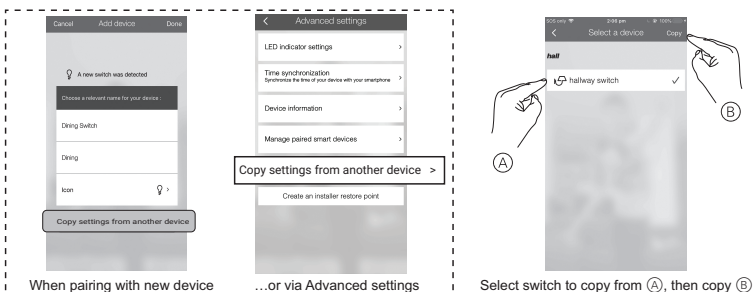


Creating an Installer restore point



'Copy and paste' settings from another Wiser Iconic device

Note: Settings can only be copied from a switch of the exact same model.



Technical data

Note: See product datasheet for full specifications. Specifications typical at 25 °C.

Operating voltage	220–240 V a.c., 50 Hz
Max load rating	10 A. Refer to Load Rating table on front page for further details.
Output	1 dry contact
Standby power	Maximum 0.4 W
Wiring	3-wire design
Connecting terminals	Screw terminals for max 2 x 2.5 mm ²
Multi-way limits	Max 10 momentary push-button switches, max 50 m cable
Operating temperature	10 °C to 35 °C
Operating humidity	40%–80% RH, non-condensing
Environmental rating	IP20
Standards	AS/NZS 60669.2.1, AS/NZS 4268
Certification	CE, RCM

Customer care

We warrant this product for 2 years, for details visit <https://www.schneider-electric.com.au/en/about-us/legal/terms-and-conditions.jsp>

Schneider Electric (Australia) Ltd

33-37 Port Wakefield Road, Gepps Cross SA 5094

Customer Care: 13 73 28

Email: customer care.au@schneider-electric.com

www.schneider-electric.com

Schneider Electric reserves the right to change specifications, modify designs and discontinue items without incurring obligation and whilst every effort is made to ensure that descriptions, specifications and other information in this catalogue are correct, no warranty is given in respect thereof and the company shall not be liable for any error therein.

© Schneider Electric 2019

This material is copyright under New Zealand and international laws. Except as permitted under the relevant law, no part of this work may be reproduced by any process without prior written permission of and acknowledgement to Schneider Electric.