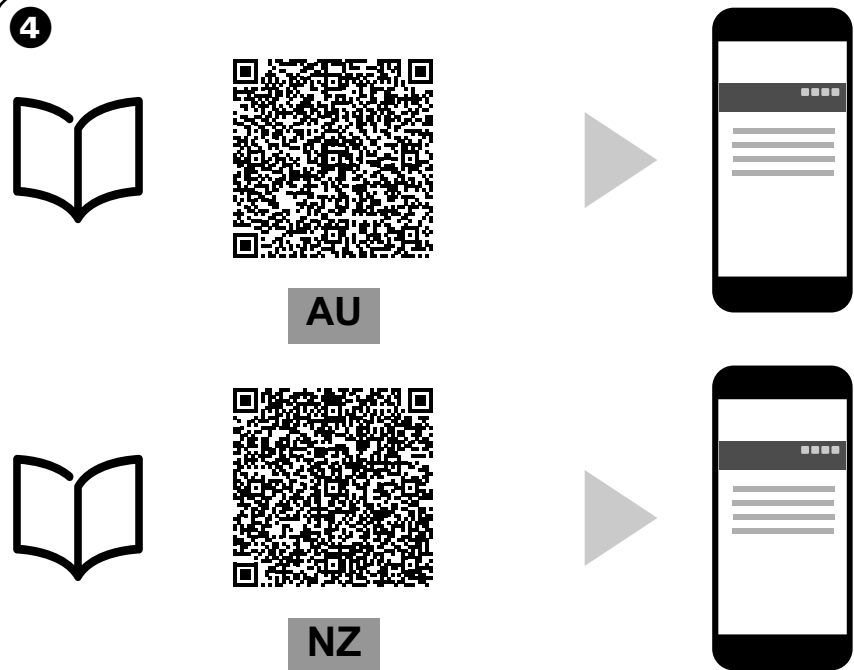
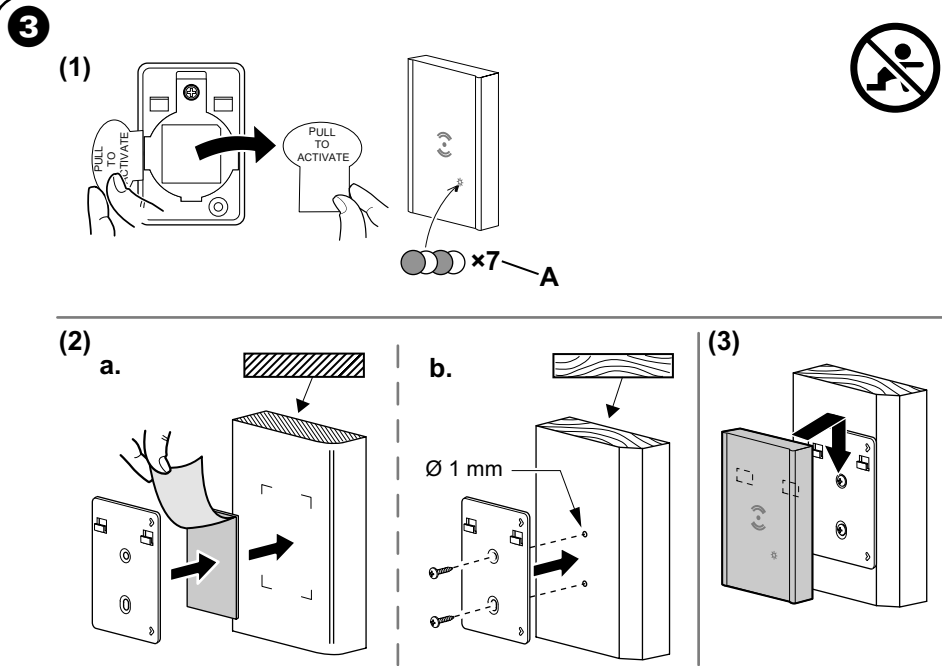
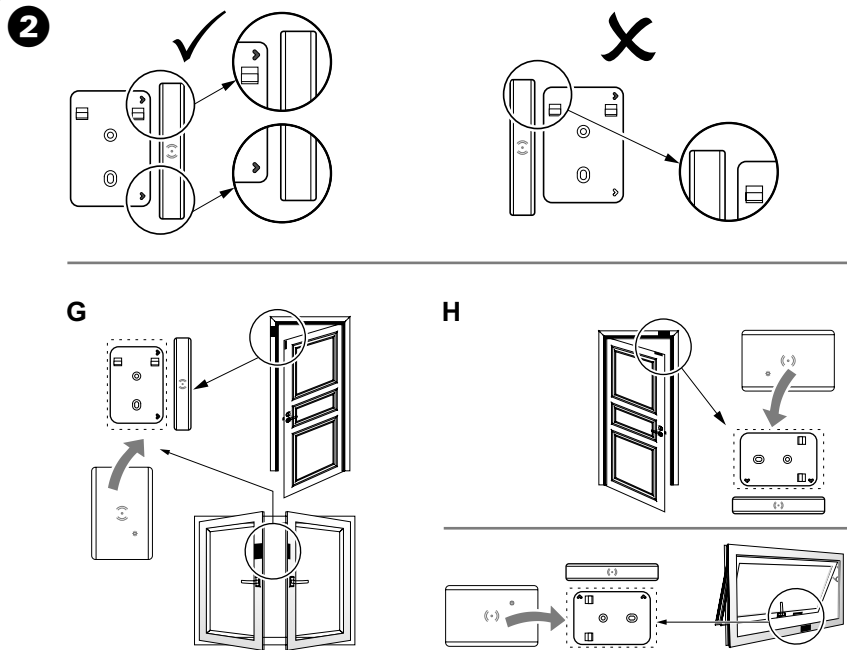
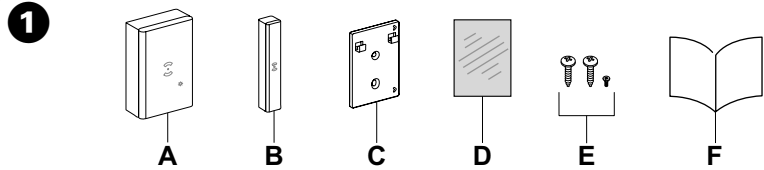


CLP591011  
PDL591011



Wiser Window/Door Sensor

NOTICE

RISK OF DAMAGE TO DEVICE

Always operate the product in compliance with the specified technical data.

Failure to follow these instructions can result in equipment damage.

About this product

The Wiser Window/door sensor (hereinafter referred to as **sensor**) consists of two separate parts: primary and secondary. The primary part includes the sensing circuit which detects the secondary part. The secondary part is a magnet.

When the sensor is connected to the Wiser Hub and the window/door is opened or closed, the primary part directly reports the change to the Wiser Hub.

1 Package contents

- A Primary part (sensing circuit)
- B Secondary part (magnet)
- C Base plate
- D Adhesive pad
- E Screws: 2 × ST2 × 10 mm, 1 × M2 × 3 mm
- F Installation instructions

2 Choose suitable location to install

- G Vertical mounting options
- H Horizontal mounting options

3 Installing the sensor

NOTICE

EQUIPMENT DAMAGE

- To avoid degrading sensor performance, do not install the sensor near magnetic devices.
- With the window/door in the close state, the distance between the primary part and secondary part of the sensor should be <18 mm for a non-metallic base (for example, wood or plastic surfaces) and <10 mm for a metallic base.

Failure to follow these instructions can result in equipment damage.

WARNING

CHEMICAL BURN HAZARD

Keep batteries out of reach of children. If swallowed, seek immediate medical attention.

Failure to follow these instructions can result in serious injury or death.

- (1) Remove the battery isolation strip

- A LED flashes green

- (2) Mount the base plate

- a. Mounting using adhesive pads

For wood or plastic surfaces or metal surfaces, use the adhesive pads.

- b. Mounting using screws

- For wood or plastic surfaces, use the screws.

- If using screws, pre-drill a 1 mm hole.

- (3) Mount the sensor on the base plate.

4 Read full device guide online

Scan the QR code and choose your language for complete information about the device, including operation, configuration and using the product with a Wiser system.

Technical data

Battery	3 VDC, CR2450
Battery life	Up to 5 years (may vary based on the usage, frequency of firmware update and environment)
Nominal power	≤90 mW
Operating frequency	2405 - 2480 MHz
Max. radio frequency power transmitted	≤7 dBm
IP rating	IP20
Operating temperature	-10 °C to 50 °C
Relative humidity	10 % to 95 %
Primary part dimensions (H × W × D)	50.3 × 33.0 × 16.3 mm
Secondary part dimensions (H × W × D)	50 × 9 × 9 mm
Certification	Zigbee 3.0

Compliance

RCM	
Safety	AS 60669.2.1:2020
EMC	EN 60669-2-1
Radio	EN 300 328
EMR	EN 62479

Trademarks

- Wiser™ is a trademark and the property of Schneider Electric SE, its subsidiaries and affiliated companies.
- Zigbee® is a registered trademark of the Connectivity Standard Alliance.

Other brands and registered trademarks are properties of their relevant owners.

Schneider Electric (Australia) Pty Ltd

33-37 Port Wakefield Road, Gepps Cross SA 5094

Customer Care: 13 73 28

Email: [customer care.au@se.com](mailto:customer care.au@se.com)

Warranty:

<https://www.se.com/au/en/download/document/AU-TERMS-OF-SALE/>

[www.se.com](http://www.se.com)

Schneider Electric (NZ) Ltd

Building 6, 60 Highbrook Drive,

East Tamaki,

Auckland 2013

Customer Care: 0800 652 999

Email: [customer care.nz@se.com](mailto:customer care.nz@se.com)

Warranty:

<https://www.se.com/nz/en/download/document/NZ-TERMS-OF-SALE/>

[www.se.com](http://www.se.com)