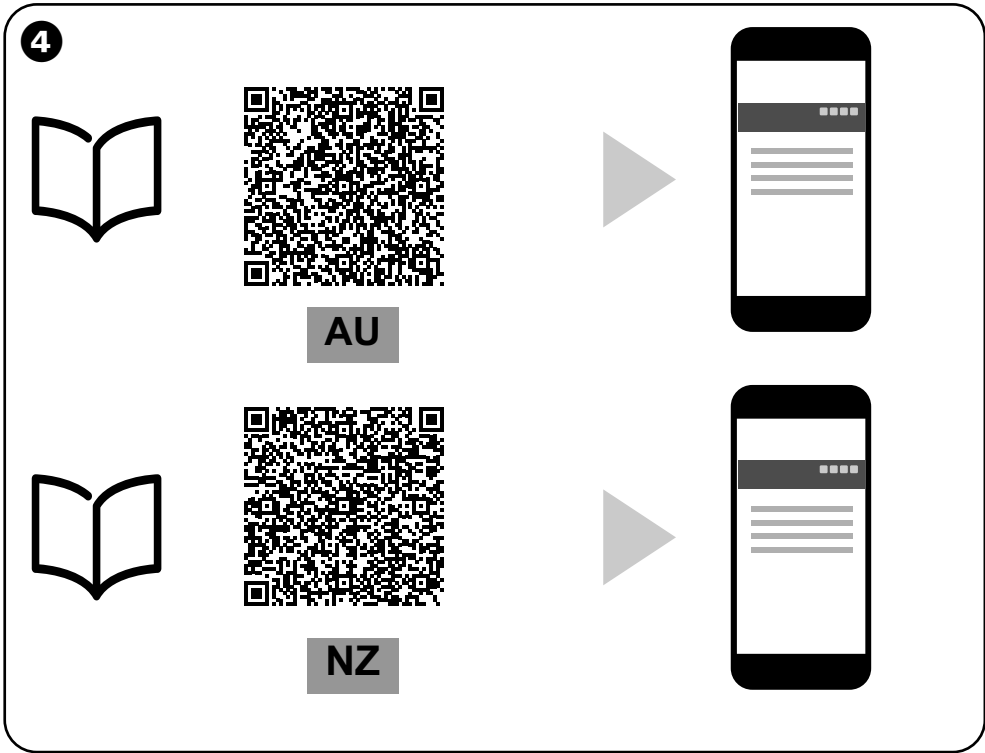
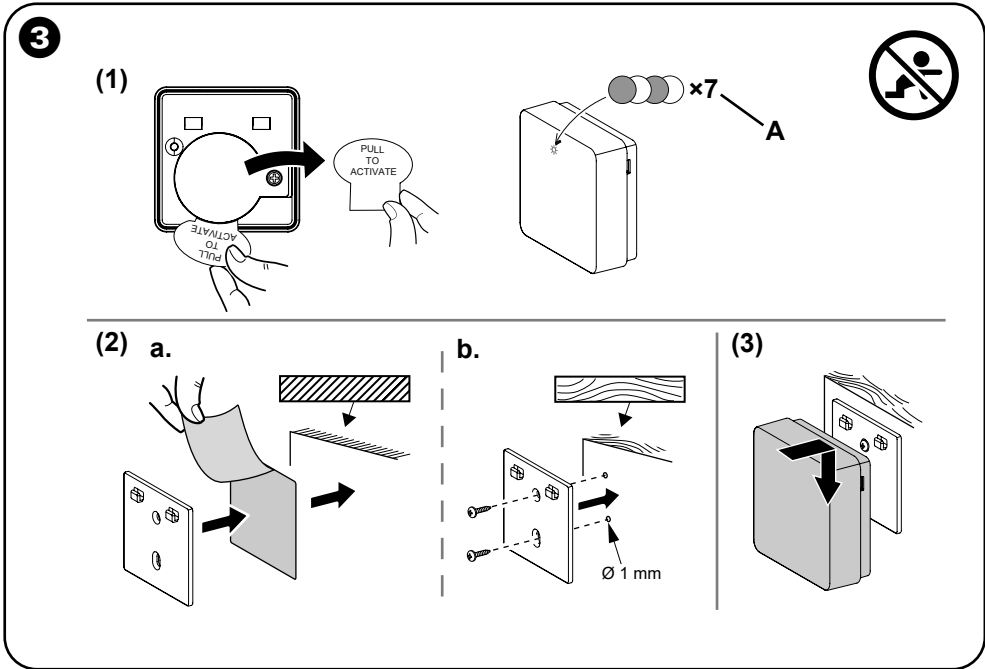
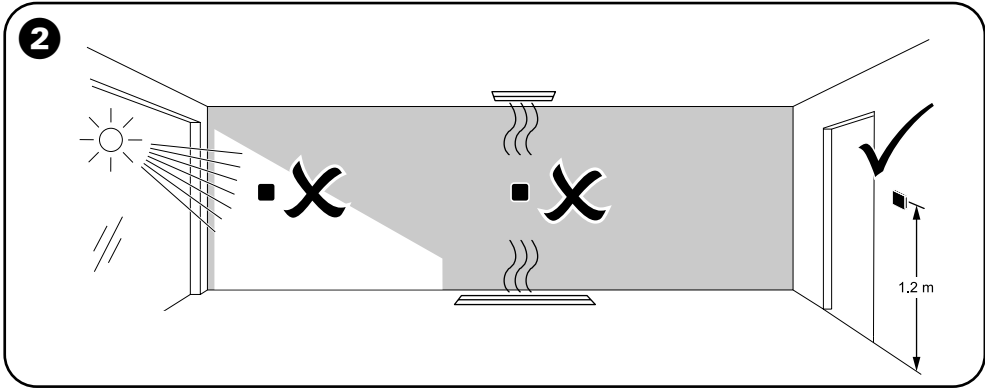
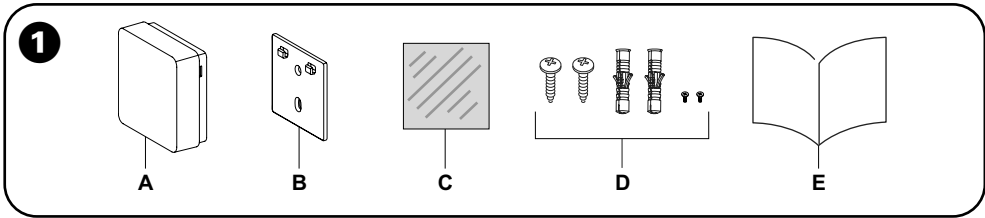


CLP593011
PDL593011



Wiser Temperature/Humidity Sensor

NOTICE

RISK OF DAMAGE TO DEVICE

Always operate the product in compliance with the specified technical data.
Failure to follow these instructions can result in equipment damage.

About this product

The Wiser Temperature/Humidity Sensor (hereinafter referred to as **sensor**) combines two sensors in one unit. The sensor measures temperature and humidity. When the sensor is connected to the Wiser Hub, it reports temperature and humidity data to the Wiser Hub.

1 Package contents

- A Sensor
- B Base plate
- C Adhesive pad
- D 4 Screws (2 × ST2.3 × 15 mm, 2 × M2 × 3 mm), 2 wall plugs
- E Installation instructions

2 Choose suitable location to install

NOTICE

EQUIPMENT DAMAGE

Do not install the sensor in a place where there is strong sunlight or wind (for example, close to the ventilation).
Failure to follow these instructions can result in equipment damage.

3 Installing the sensor

WARNING

CHEMICAL BURN HAZARD

Keep batteries out of reach of children. If swallowed, seek immediate medical attention.
Failure to follow these instructions can result in serious injury or death.

- (1) Remove the battery isolation strip
 - A LED flashing green
- (2) Mount the base plate
 - a. Mounting using adhesive pads
For wood or plastic surfaces or metal surfaces, use the adhesive pads.
 - b. Mounting using screws
• For wood or plastic surfaces, use the screws.
• If using screws, pre-drill a 1 mm hole.
- (3) Mount the sensor on the base plate.

4 Read full device guide online

Scan the QR code and choose your language for complete information about the device, including operation, configuration and using the product with a Wiser system.

Technical data

Battery	3 VDC, CR2450
Battery life	Up to 5 years (may vary based on the usage, frequency of firmware update and environment)
Nominal power	≤90 mW
Operating frequency	2405 - 2480 MHz
Max. radio frequency power transmitted	≤7 dBm
IP rating	IP20
Operating temperature	-10 °C to 50 °C
Temperature accuracy	±1.5 °C
Temperature resolution	0.1 °C
Relative humidity	10 % to 95 %
Humidity accuracy	±5%
Dimensions (H × W × D)	45.0 × 45.0 × 17.2 mm
Certification	Zigbee 3.0
Compliance	
RCM	
Safety	IEC 60730-2-9
EMC	EN IEC 60730-2-9
Radio	EN 300 328
EMR	EN 62479

Trademarks

- Wiser™ is a trademark and the property of Schneider Electric SE, its subsidiaries and affiliated companies.
- Zigbee® is a registered trademark of the Connectivity Standard Alliance.

Other brands and registered trademarks are properties of their relevant owners.

Schneider Electric (Australia) Pty Ltd

33-37 Port Wakefield Road, Gepps Cross SA 5094

Customer Care: 13 73 28

Email: customercare.au@se.com

Warranty:

<https://www.se.com/au/en/download/document/AU-TERMS-OF-SALE/>
www.se.com

Schneider Electric (NZ) Ltd

Building 6, 60 Highbrook Drive,

East Tamaki,

Auckland 2013

Customer Care: 0800 652 999

Email: customercare.nz@se.com

Warranty:

<https://www.se.com/nz/en/download/document/NZ-TERMS-OF-SALE/>
www.se.com