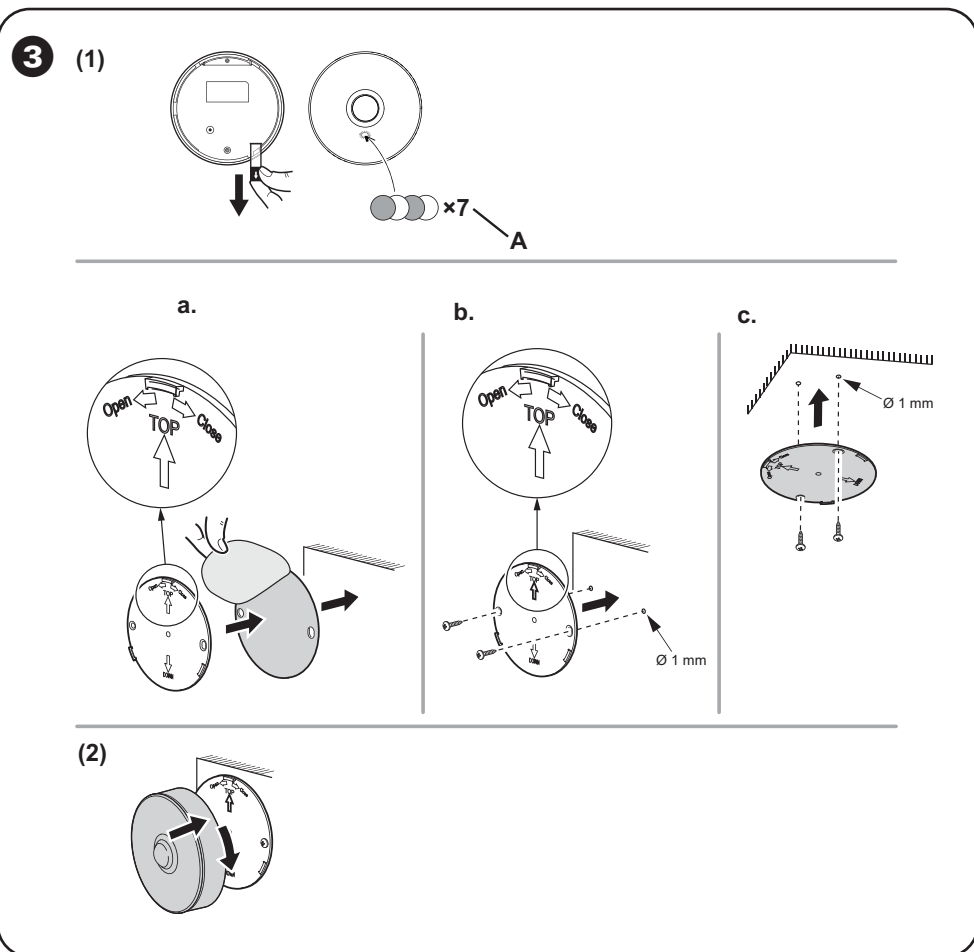
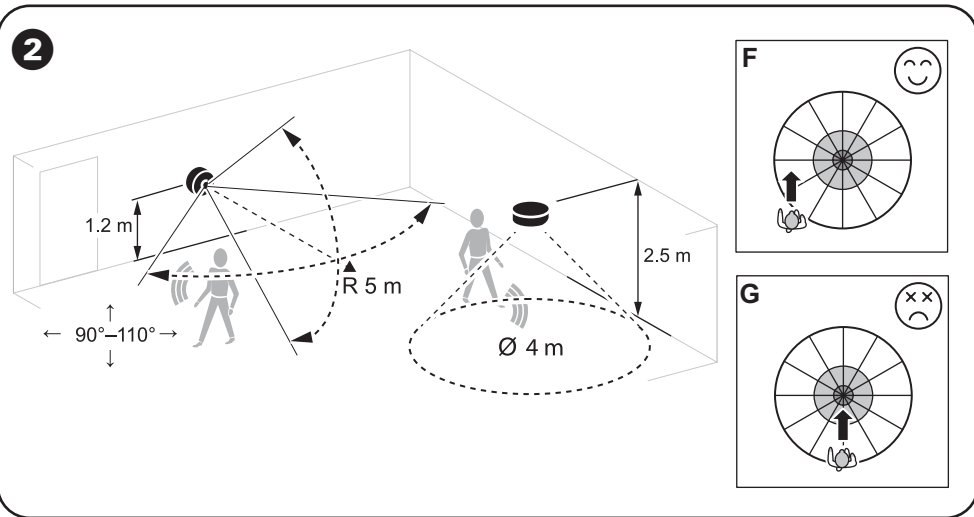
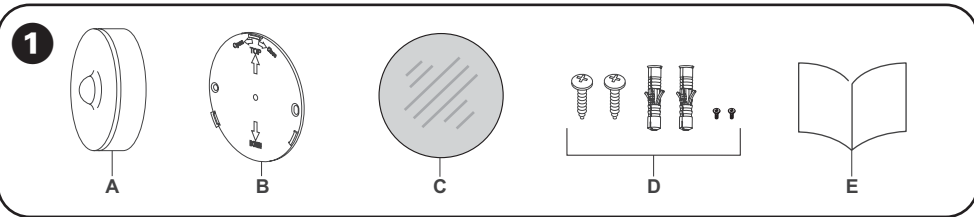


CLP595011
PDL595011

Wiser™

Schneider Electric



Wiser Motion Sensor

About this product

The Wiser Motion Sensor (hereinafter referred to as **sensor**), reports the detection of movement and measures the luminance of the environment, then passes this data to the Wiser Hub. The threshold of luminance settings and/or detection of movement can be programmed to determine what action is to be taken.

1 Package contents

- A Motion sensor
- B Base plate
- C Adhesive pad
- D 4 Screws (2 × ST2 × 5 mm, 2 × ST3 × 22 mm), 2 wall plugs
- E Installation instructions

2 Choose suitable location to install

NOTICE

RISK OF DAMAGE TO DEVICE

- Always operate the product in compliance with the specified technical data.
 - Do not install the sensor in a place where there is strong sunlight or wind (for example, close to ventilation).
 - When the ambient temperature is >32 °C, the sensor's ability to measure sensitivity, detection range and detection angle are degraded.
- Failure to follow these instructions can result in equipment damage.**

The sensor can be mounted on a wall or ceiling to provide desired coverage:

- Ceiling mount provides a 360° detection angle with a maximum range of 4 m diameter.
- Wall mount provides a detection angle of 90° to 110° horizontal and vertical with a maximum range of 5 m radius.

Walking direction

The sensor is more sensitive to movement across different patterns. On the Conversely, the sensor is less sensitive when movement is directly towards the sensor, since the range is reduced.

- F More sensitive to movement across the pattern
- G Less sensitive to movement directly towards sensor

3 Installing the sensor

- (1) Remove the battery isolation strip

- A LED flashes green

Mount the base plate

- a. Mounting using adhesive pads

For wood or plastic surfaces or metal surfaces, use the adhesive pads.

Note: For metal surfaces, use the adhesive pads only.

- b. Mounting using screws

For wood or plastic surfaces, use the screws.

If using screws, pre-drill a 1 mm hole.

- c. Mounting on ceiling

- (2) Mount the sensor on the base plate.

4 Read full device guide online

Scan the QR code and choose your language for complete information about the device, including operation, configuration and using the product.

Technical data

Battery	3 VDC, LR03 AAA × 2
Battery life	Up to 5 years (may vary based on the usage, frequency of firmware update and environment)
Nominal power	≤90 mW
IP rating	IP20
Operating frequency	2405 - 2480 MHz
Max. radio frequency power transmitted	≤7 dBm
Operating temperature	-10 °C to 50 °C
Relative humidity	10 % to 95 %
Lux measurement range	0 lx to 2000 lx
Dimensions	Ø 75.0 × 26.6 mm
Communication protocol	Zigbee 3.0 certified
Ceiling mounted at 2.5 m	
Detection angle	360°
Detection range	Ø 4 m
Wall mounted at 1.2 m	
Detection angle	90° to 110° horizontal and vertical
Detection range	5 m in radius
Compliance	
RCM	
Safety	AS 60669.2.1:2020
EMC	EN 60669-2-1
Radio	EN 300 328
EMR	EN 62479

Trademarks

- Wiser™ is a trademark and the property of Schneider Electric SE, its subsidiaries and affiliated companies.
- Zigbee® is a registered trademark of the Connectivity Standard Alliance.

Other brands and registered trademarks are properties of their relevant owners.

Schneider Electric (Australia) Pty Ltd
33-37 Port Wakefield Road, Gepps Cross SA 5094

Customer Care: 13 73 28

Email: customercare.au@se.com

Warranty: <https://www.se.com/au/en/about-us/legal/terms-and-conditions.jsp>

www.se.com

Schneider Electric (NZ) Ltd

Building 6, 60 Highbrook Drive,

East Tamaki,

Auckland 2013

Customer Care: 0800 652 999

Email: customercare.nz@se.com

Warranty: <https://www.se.com/nz/en/about-us/legal/terms-and-conditions.jsp>

www.se.com