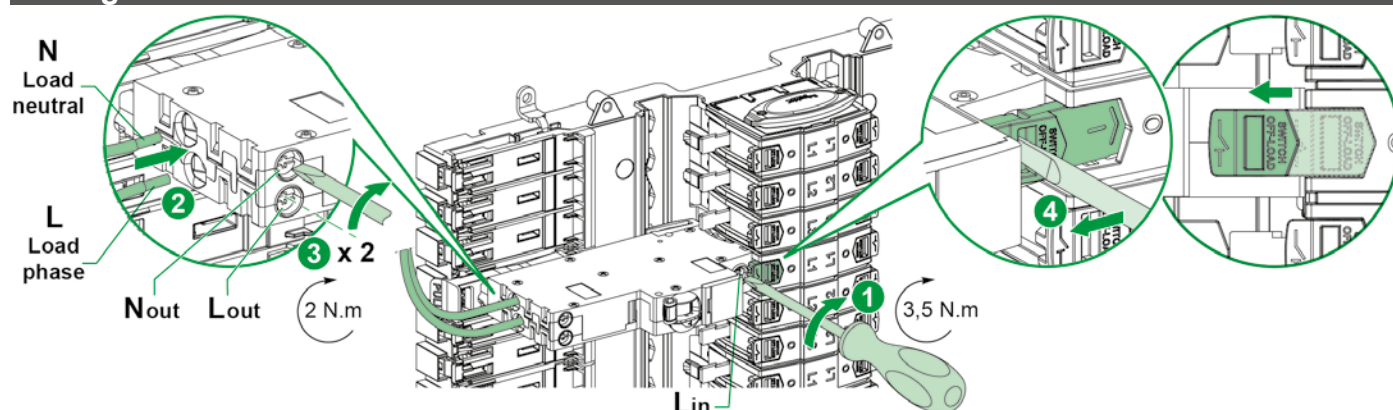
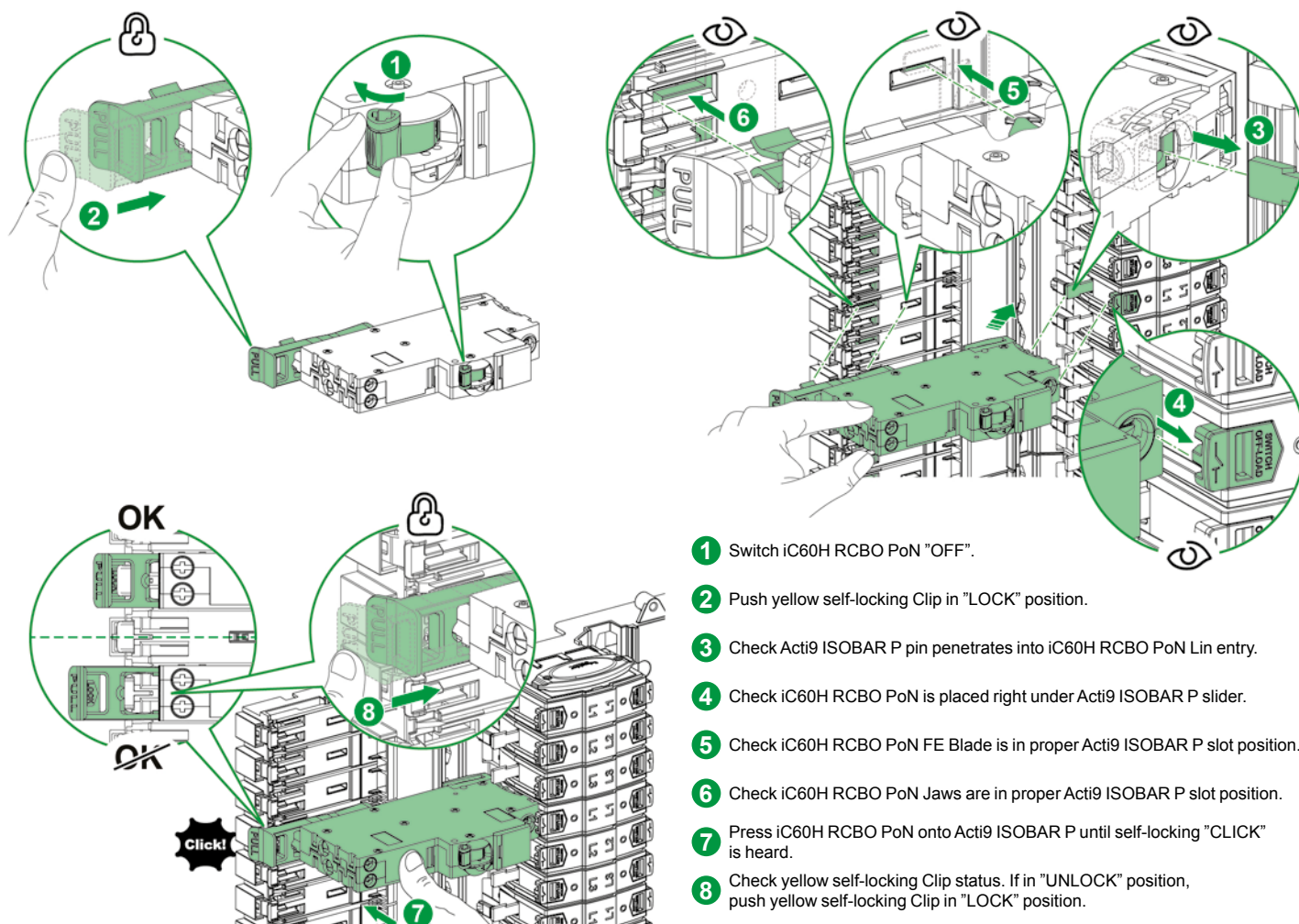


■ Disconnect all power supply before installing and uninstalling.

⚡ ⚠ DANGER

Failure to follow these instructions will result in death or serious injury.

Maximum permissible earthing resistance is as follows:



3

Testing

Press once button marked "T".
Toggle moves from "ON" to "OFF" position by itself and "Click" is heard.
If the devices do not switch off the supply, contact a "qualified electrician".
The devices must switch off the supply immediately and must then be switched on to restore the supply.
In the absence of any regulation, the test must be carried out once a month.
iC60H RCBO PoN must be disconnected before any dielectric test is carried out.

⚡ ⚠ DANGER

HAZARD OF ELECTRIC SHOCK, EXPLOSION OR ARC FLASH

Test once a month each device by pressing on the button marked "T".

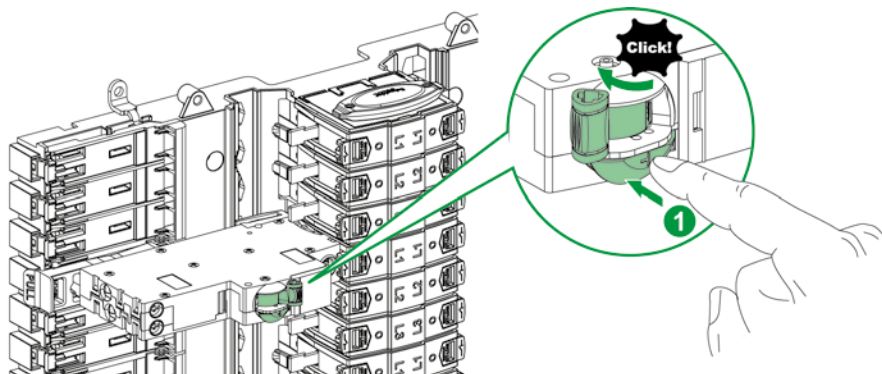
Failure to follow these instructions will result in death or serious injury.

NOTICE

HAZARD OF IMPROPER OPERATION

Do not use Test Button to switch off iC60H RCBO PoN.

Failure to follow these instructions can result in equipment damage.



4

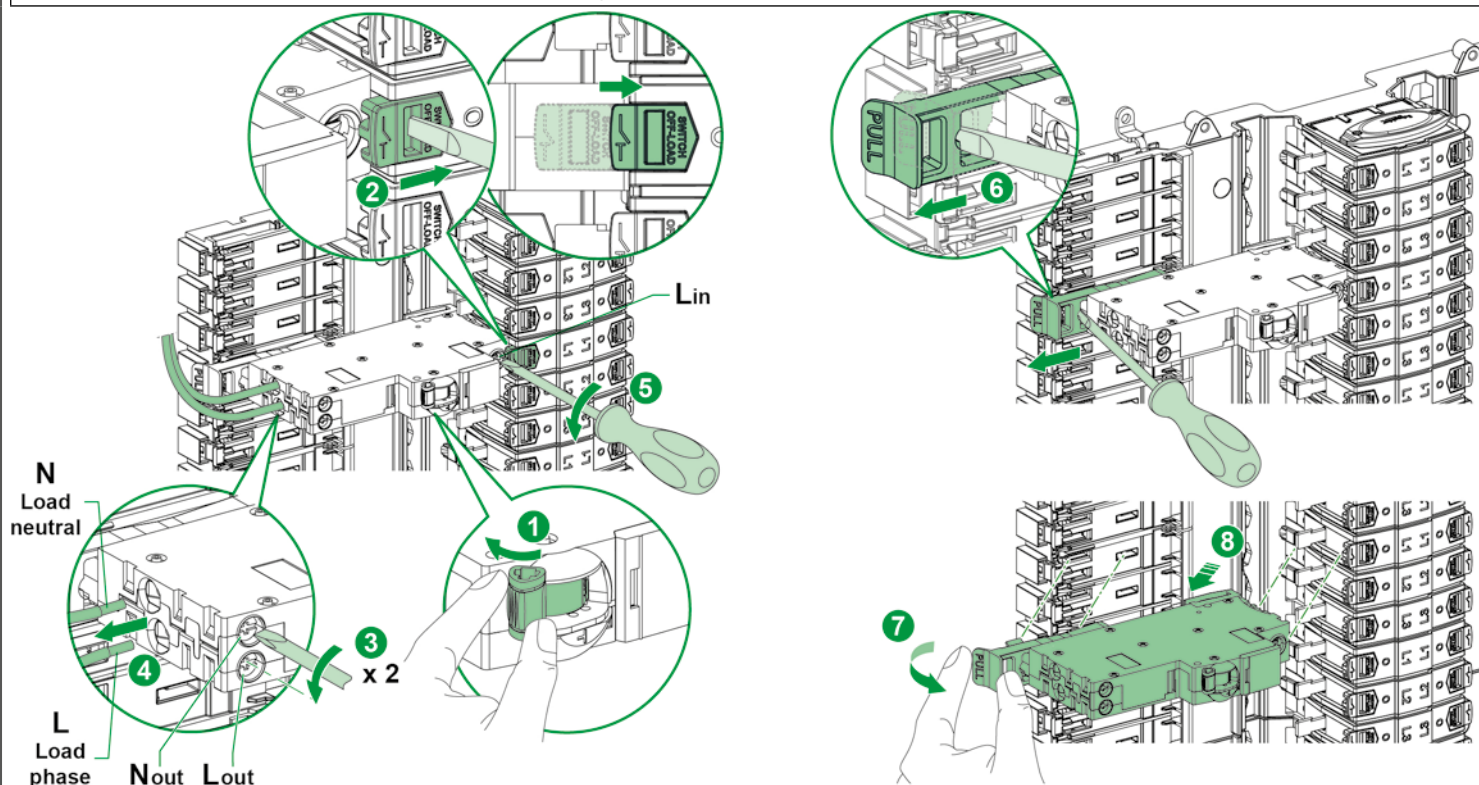
Dismounting

NOTICE

HAZARD OF IMPROPER OPERATION

iC60H RCBO PoN self-locking Clip should be unlocked before removal.

Failure to follow these instructions can result in equipment damage.



Schneider Electric Industries SAS

35, rue Joseph Monier

CS 30323

F - 92506 Rueil Malmaison Cedex

www.schneider-electric.com