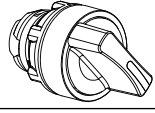
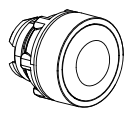

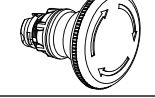
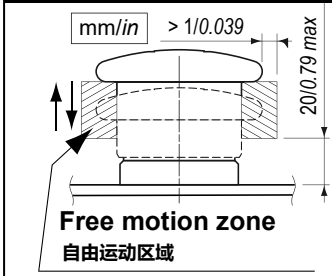
	Push button 按钮	XA2AA●● / XA2AA●●●● / XA2AC●●● / XA2AH0●●		Selector switches 选择开关	XA2AD●● / XA2AJ●●
	Illuminated pushbuttons 带灯按钮	XA2AW●●●●		Key selector switches 钥匙选择开关	XA2AG●●
				Emergency switch off 紧急按钮	XA2AT●● / XA2AS●●

Overview 概述

XA2A is a Ø 22mm plastic series button with a metal buckle base, making installation easy, convenient, and reliable. IP65 protection level (Exclude select switch IP54), able to adapt to harsh environmental requirements.
XA2A为Ø 22mm塑料系列按钮, 采用金属卡扣的基座, 安装轻松, 便捷, 牢靠。IP65防护等级(除钥匙钮IP54), 能适应严苛的环境要求。

Safety Information 安全信息

⚠ DANGER / 危险



UNINTENDED ACTION OF BUTTON

- Ensure the button completely free in move zone.

Failure to follow these instructions will result in death or serious injury.

按钮的非预期运动

- 务必确保按钮在自由运动区中自由移动。

不遵循上述说明将导致人员伤亡。

⚠ WARNING / 警告

UNINTENDED EQUIPMENT OPERATION

- Ensure the power is turned off before installation, debugging, or maintenance.
- The instantaneous voltage must not exceed the impulse withstand voltage value.
- Do not use the equipment in environments outside the specified environmental parameters.
- Avoid prolonged use in dirty, high-temperature, high-humidity, or dusty environments.

Failure to follow these instructions can result in death, serious injury, or equipment damage.

意外的设备运行

- 安装、调试或维护前, 请确保电源已关闭。
- 瞬时电压不得超过冲击耐压值。
- 切勿在规定环境参数以外的环境中使用本设备。
- 避免在肮脏、高温、高湿或多尘的环境中长时间使用。

不遵守这些说明可能会导致人员死亡、严重伤害或设备损坏。

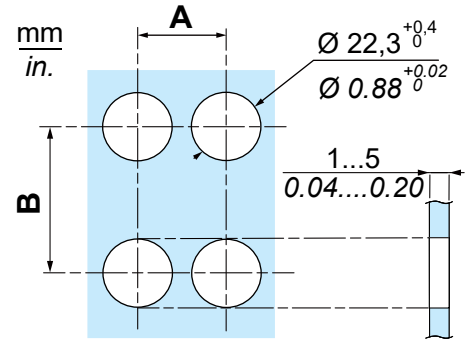
Technical Characteristics 技术特性

Operating environment temperature 使用环境温度	-25...+55 °C (-13...+131 °F)	Rated insulation voltage 额定绝缘电压 (Ui)	600 Vac
Storage temperature 储存温度	-40...+70 °C (-40...+158 °F)	Agreed heating current 约定发热电流 (Ith)	10 A
Relative humidity of the air 空气相对湿度	≤ 90%	Rated impulse withstand voltage 额定冲击耐受电压(Uimp)	6 kVac
The altitude of the installation site shall not exceed 安装地点的海拔不超过	2000 m	Power frequency withstand voltage 工频耐压	1890 V (AC RMS) /5 s 1890 V (AC有效值) /5 s
Installation category 安装类别为	"II"	Electric lifespan 电寿命	AC-15/DC-13 0.5 million cycles AC-15 /DC-13 0.5百万次
Pollution level 污染等级	The pollution level is level 3 (when the actual working voltage is greater than 500V, the pollution level of switch components should be level 2) 污染等级为3级(当实际工作电压大于500V时, 开关元件污染等级应为2级)	Mechanical lifespan 机械寿命	1.5 million cycles for push buttons and illuminated push buttons, 500000 cycles for self-locking buttons and selector switches, and 100000 cycles for emergency switch off and key selector switches 平钮和带灯平钮150 万次, 自锁按钮和选择开关50万次, 急停和钥匙开关 10万次
		Screw clamped terminal 螺钉夹紧端子	Screw clamped terminal, 1 x 2.5 mm ² ; 2 x 1.5 mm ² (optional) with or without wire terminal 螺钉夹紧端子, 1 x 2.5 mm ² ; 2 x 1.5 mm ² (可选) 带或者不带导线端子
		Rotation torque 旋转扭矩	The rotation torque of the knob is less than 0.5 Nm, and the rotation torque of the key knob is less than 0.5 Nm 旋钮旋转操作力矩 < 0.5 N·m, 钥匙钮旋转操作力矩 < 0.5 N·m;

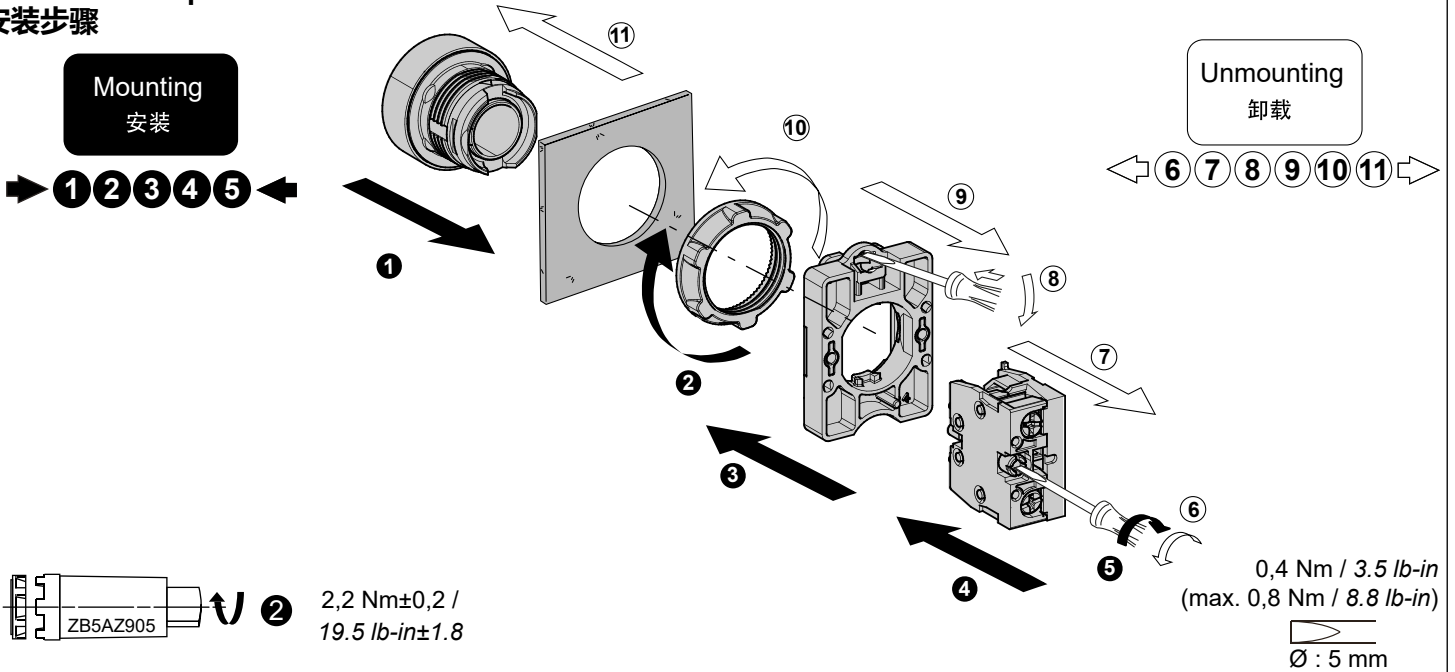


Panel cut-out 面板开孔示意图

	A (mm)	B (mm)	A (in.)	B (in.)
XA2AA• / XA2AS4• / XA2AD• / XA2AJ• / XA2AG• / XA2AH0•• / XA2AW••••	40	30	1.57	1.18
XA2AC• / XA2AS5• / XA2AT•	40	40	1.57	1.57
XA2AS6•	60	60	2.36	2.36



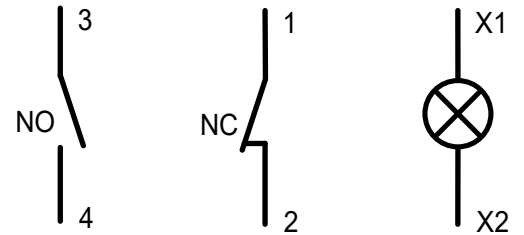
Installation steps 安装步骤



Wiring diagrams 接线图

Wiring tightening torque:
接线拧紧力矩:
0.8 ... 1.2 Nm
(7 ... 10.6 lb-in)

Terminal	Wire Size	Wire Area	Wire Gauge
1, 2	8,0 mm	0,5...2,5 mm ²	20...14 AWG
3, 4	8,0 mm	0,5...1,5 mm ²	20...16 AWG



产品中有害物质的名称和浓度

Names and Concentrations of Hazardous Substances in Product

部件名称 Part Name	有害物质 - Hazardous Substances									
	铅 (Pb)	汞 (Hg)	镉 (Cd)	六价铬 (Cr (VI))	多溴联苯 (PBB)	多溴二苯醚 (PBDE)	邻苯二甲酸二正丁酯 (DBP)	邻苯二甲酸二异丁酯 (DIBP)	邻苯二甲酸丁基苯酯 (BBP)	邻苯二甲酸二(2-乙基)己酯 (DEHP)
金属部件 Metal parts	X	O	O	O	O	O	O	O	O	O
塑料部件 Plastic parts	O	O	O	O	O	O	O	O	O	O
电子件 Electronic	O	O	O	O	O	O	O	O	O	O
触点 Electrical contacts	O	O	O	O	O	O	O	O	O	O

This table is made according to SJ/T 11364.

O: Indicates that the concentration of hazardous substance in all of the homogeneous materials for this part is below the limit as stipulated in GB/T 26572.

X: Indicates that concentration of hazardous substance in at least one of the homogeneous materials used for this part is above the limit as stipulated in GB/T 26572.

本表格根据 SJ/T 11364 的规定编制。

O: 表示该有害物质在该部件所有均质材料中的含量均在 GB/T 26572 规定的限量要求以下。

X: 表示该有害物质至少在该部件的某一均质材料中的含量超出 GB/T 26572 规定的限量要求。



(en) Electrical equipment should be installed, operated, serviced, and maintained only by qualified personnel. No responsibility is assumed by Schneider Electric for any consequences arising out of the use of this material.

(zh) 电气设备的安装、操作、维修和维护工作仅限于合格人员执行。Schneider Electric 不承担由于不遵守本资料所引起的任何后果。专业人员是指掌握与电气设备的制造和操作及其安装相关的技能和知识的人员，他们经过安全培训能够发现和避免相关的危险。



© 2025 Schneider Electric. All Rights Reserved.