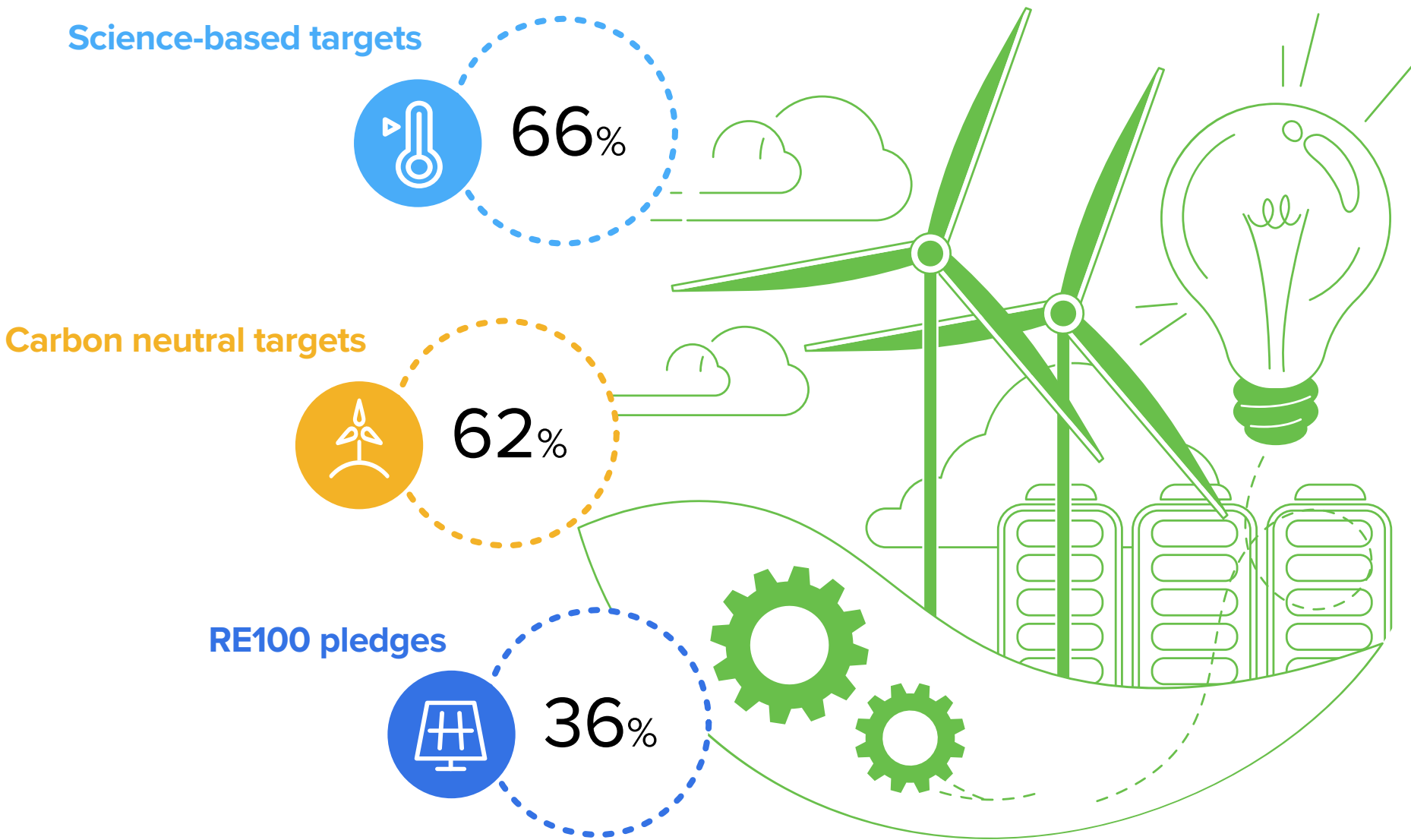


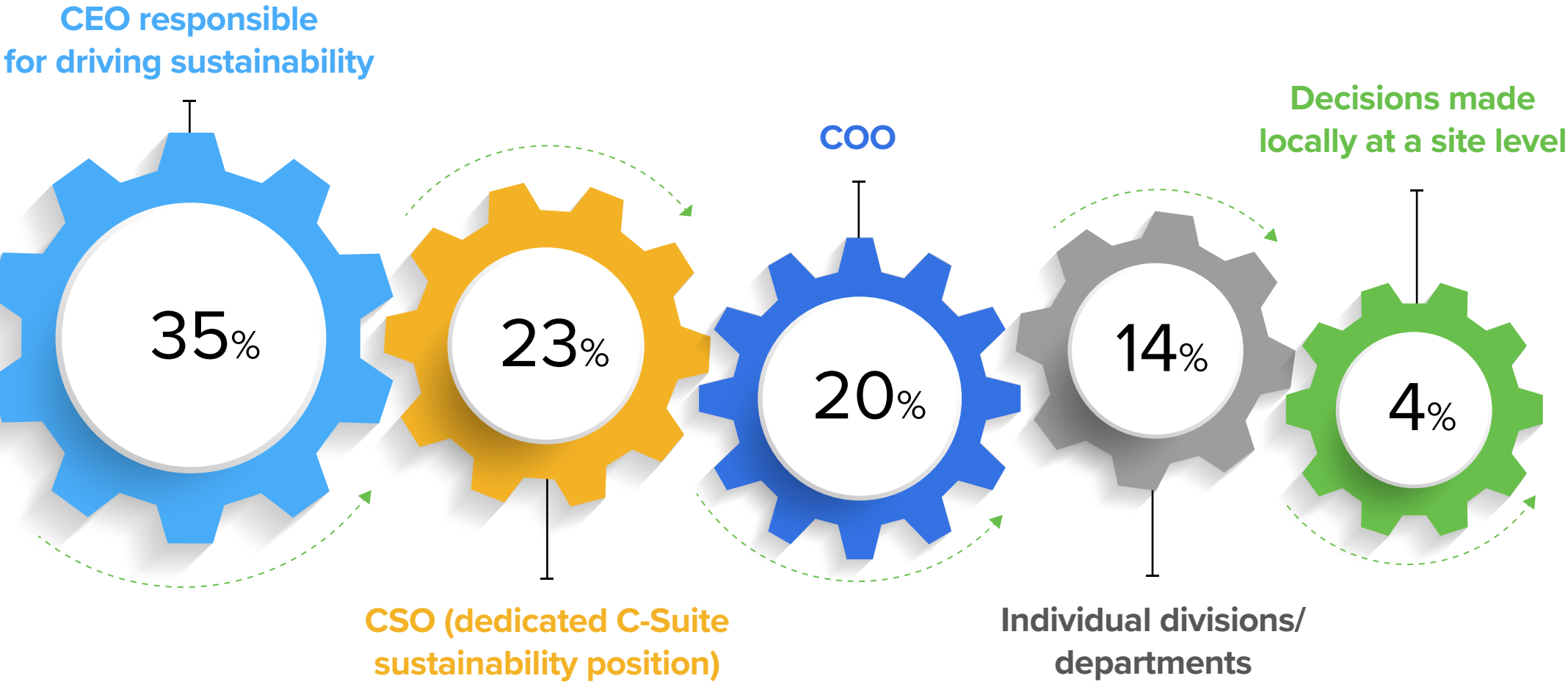
MOVING SUSTAINABILITY FORWARD IN MANUFACTURING

THE MANUFACTURING SECTOR IS THE LARGEST CONTRIBUTOR (DIRECTLY AND INDIRECTLY) TO ENVIRONMENTAL CHALLENGES

IN RESPONSE, LEADING INDUSTRIAL COMPANIES* HAVE MADE COMMITMENTS AND PLEDGES TO DEVELOP A MORE SUSTAINABLE BUSINESS



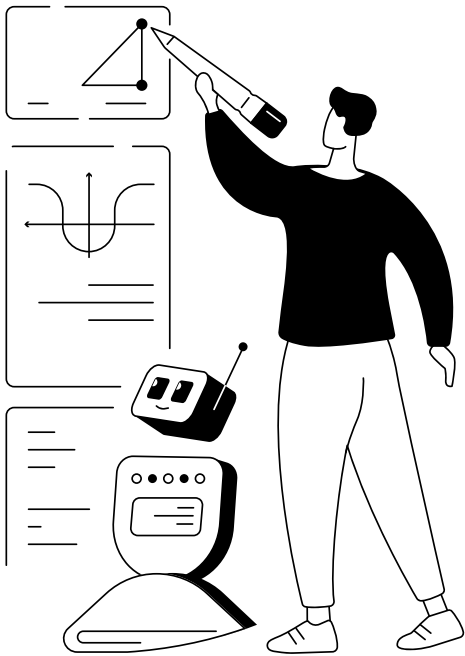
THE ROLES RESPONSIBLE FOR DRIVING SUSTAINABILITY EFFORTS ARE PRIMARILY IN THE C-SUITE



CURRENT STATE OF SUSTAINABILITY ACROSS BUSINESS FUNCTIONS

DESIGN

Sustainability in design requires engineering tools to design products that are optimized for operations and for end-of-life, remanufacturing or disposal.



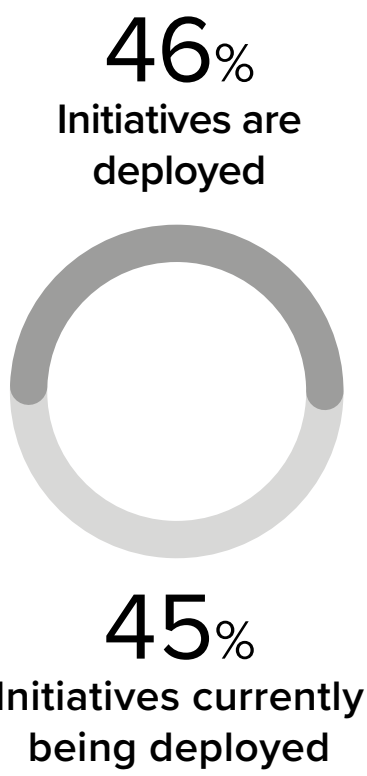
OPERATIONS

Processes are optimized, or re-invented, to maximize efficiency, minimize energy, material consumption, and emissions and reduce waste.



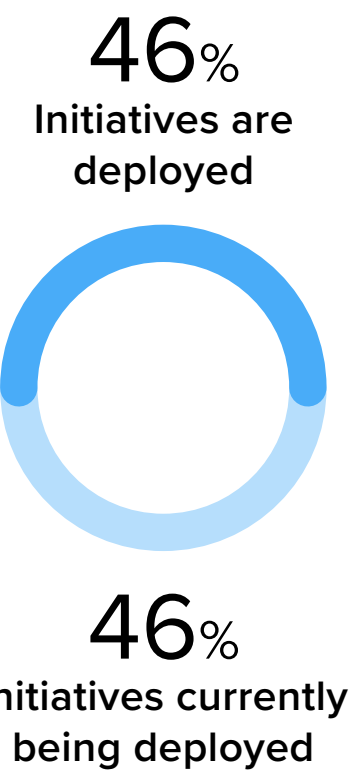
MAINTENANCE

Unplanned downtime is minimized, equipment life is extended, and asset performance is optimized to consider its environmental impact.



SUPPLY CHAIN

Monitoring environmental commitments of supply chain partners. This includes visibility of emissions, as well as recycling and remanufacturing efforts for a circular economy.



SUSTAINABILITY WILL HAVE SIGNIFICANT IMPACT ON BUSINESS FUNCTION



25% DESIGN

43% OPERATIONS

28% MAINTENANCE

22% SUPPLY CHAIN

[READ THE FULL REPORT HERE](#)

Notes:
*Top 50 excluding energy and oil and gas companies.
**Based on a survey of 262 end-users.