



**APPLICATION GUIDE**  
**Hotel Accessories**

**CAT. NO.**

E8231DS

E8231WS





E8231CS

E8233DMWS

**Pieno**

Thank you for choosing **Schneider Electric Pieno's** electronic accessories. To ensure proper application of our products, please read through the following information before installation and use .

**This application guide applies to the following products.**

Cat. no.	Description
E8231DS	16AX 1 Gang Switch with Neon with "Privacy" Symbol
	
E8231WS	16AX 1 Gang Switch with Neon with "Please Wait" Symbol
	
E8231CS	16AX 1 Gang Switch with Neon with "Please Clean Up" Symbol
	
E8233DMWS	16AX 3 Gang Switch with Neon with "Please Clean Up", "Privacy" & "Please Wait" Symbols
	

## SPECIFICATIONS

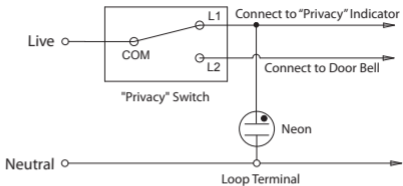
Rated Voltage	:250V~
Rated Current	:10A
Dimension	:87mm x 87mm
Mounting Centre	:60.3mm
Compliance	:IEC 60669-1, BSEN 60669-1, MSIEC 60669-1, GB 16915.1, SS 227-1

## IMPORTANT NOTE

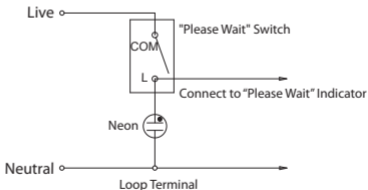
1. The products must be installed by qualified electricians.
2. Please check your local wiring regulations before installation.
3. Safekeeping the faceplate to prevent damage during product installation.
4. Turn off the power supply when you clean the product. Use a soft, slightly-moistened cloth or tissue paper to wipe off the dust and dirt on the surface. Clean with much diluted detergent if necessary but avoid using corrosive chemicals.

## WIRING DIAGRAMS

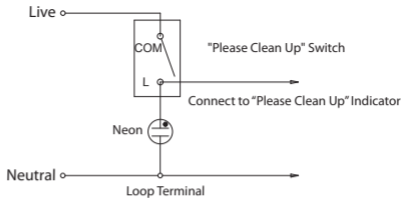
E8231DS



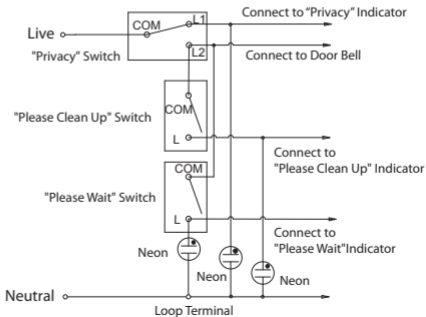
E8231WS



E8231CS

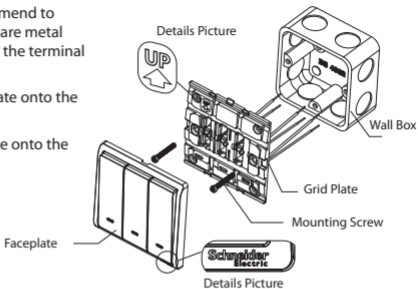


E8233DMWS



## MOUNTING INSTRUCTION

1. Connect the wires to the terminals (recommend to leave 10-12mm bare metal wire) and tighten the terminal screws.
2. Screw the grid plate onto the wall box.
3. Snap the faceplate onto the grid plate.



Insert a screwdriver into the clip lock, and twist the screwdriver to remove the faceplate.

