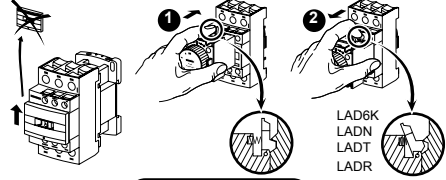
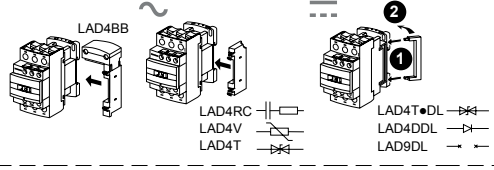


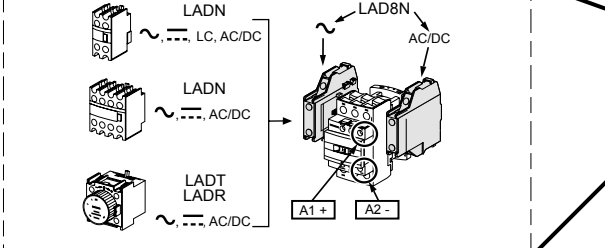
Schneider Electric Industries SAS www.schneider-electric.com/contact  
 35, rue Joseph Monier CS 30323 W9 1378323 0211 A11  
 F - 92506 Rueil Malmaison Cedex 03/2017



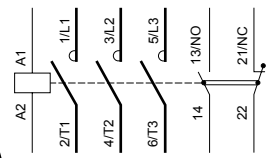
|     | LC1D09/<br>D12      | LC1DT20/<br>DT25/<br>D098/D128 | LC1D18              | LC1D25/<br>D32/D38  | LC1DT32/<br>DT40/<br>D188/D258 | LC1D●●,<br>LA●●     |
|-----|---------------------|--------------------------------|---------------------|---------------------|--------------------------------|---------------------|
|     | 8 mm<br>5/16"       | 12 mm<br>6/13"                 | 8 mm<br>5/16"       | 10 mm<br>3/8"       | 12 mm<br>6/13"                 | 8 mm<br>5/16"       |
|     | 1...4               | 1...4                          | 1.5...6             | 2.5...10            | 2.5...10                       | 1...4               |
|     | 1...4               | 1...4                          | 1.5...6             | 2.5...10            | 2.5...10                       | 1...4               |
|     | 1...4               | 1...4                          | 1...6               | 1...10              | 2.5...10                       | 1...4               |
|     | 1...2.5             | 1...2.5                        | 1...4               | 1.5...6             | 2.5...10                       | 1...2.5             |
|     | 1...4               | 1...4                          | 1.5...6             | 1.5...10            | 2.5...16                       | 1...4               |
|     | 1...4               | 1...4                          | 1.5...6             | 2.5...10            | 2.5...16                       | 1...4               |
| AWG | 10-18<br>CU 75°C    | 10-18<br>CU 75°C               | 8-18<br>CU 75°C     | 6-14<br>CU 75°C     | 8-12<br>CU 75°C                | 10-18<br>CU 75°C    |
|     | 6 mm                | 6 mm                           | 6 mm                | 6 mm                | 6 mm                           | 6 mm                |
|     | 1.7 N.m<br>15 lb-in | 1.7 N.m<br>15 lb-in            | 1.7 N.m<br>15 lb-in | 2.5 N.m<br>22 lb-in | 1.8 N.m<br>16 lb-in            | 1.7 N.m<br>15 lb-in |

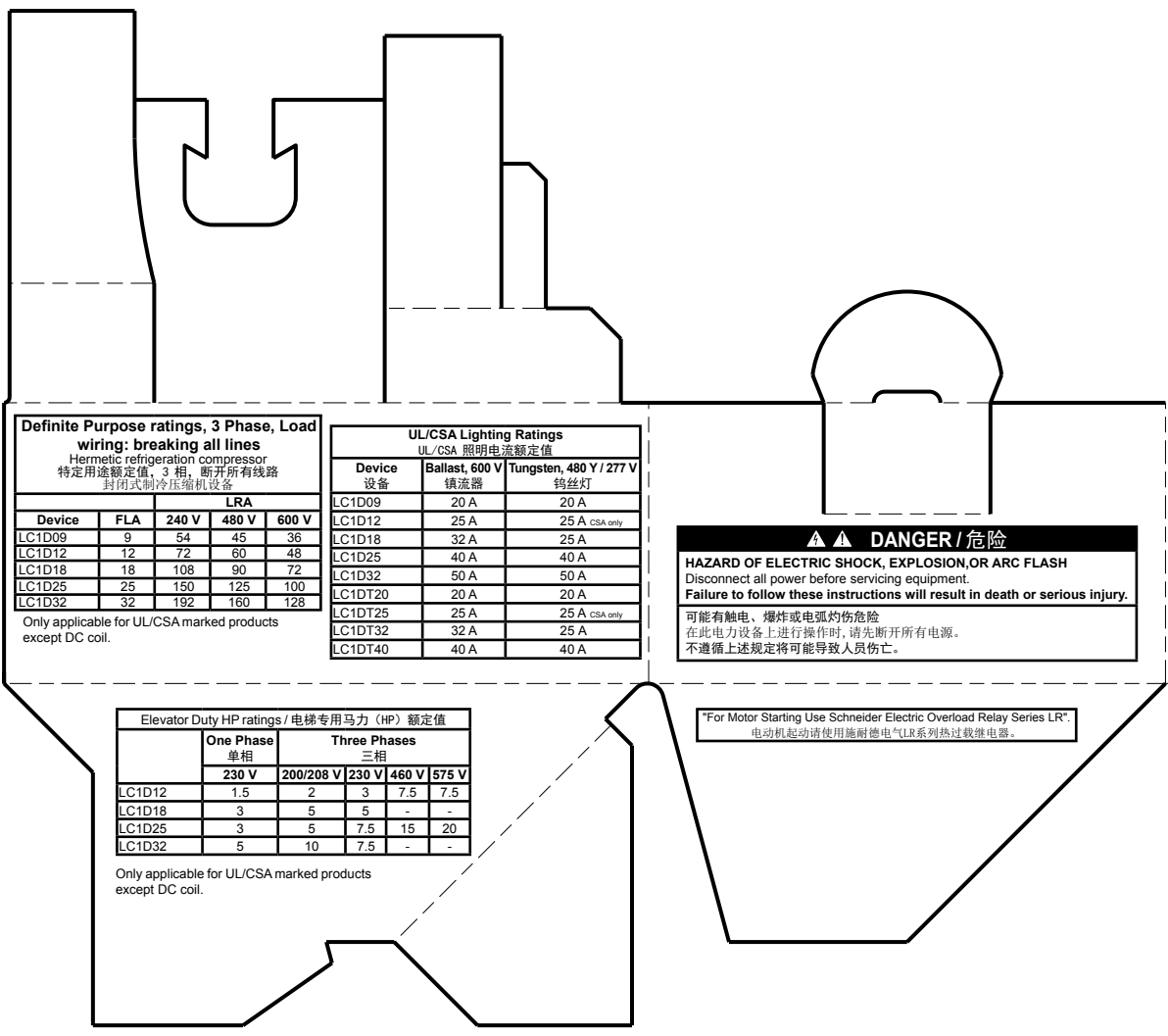


**⚠️ WARNING / 警告**  
**RISK OF FIRE OR ELECTRIC SHOCK (FOR CONTACTOR WITH UL HI-FAULT SHORT CIRCUIT CURRENT RATINGS ONLY)**  
 ■ The opening of the branch-circuit protective device may be an indication that a fault current has been interrupted.  
 ■ To reduce the risk of fire or electric shock, current-carrying parts and the other components of the controller should be examined and replaced if damaged.  
**Failure to follow these instructions can result in death, serious injury, or equipment damage.**  
 可能有火灾或者触电的危险 (仅限UL高故障短路电流额定值的接触器)  
 ■ 支路保护设备断开, 表明故障电流已被中断。  
 ■ 为降低火灾或触电风险, 应检查带电部件和其他控制元件, 如有损坏, 需及时更换。  
 不遵循上述规定将可能导致人员伤亡或设备损坏。



3P AC TeSys D contactors are grade 3 (LC1D09 → LC1D18) and grade 2 (LC1D25 → LC1D38) according to GB 21518. Maximum power consumption lower than 9.5 VA.  
 根据GB 21518标准, 三极 TeSys D 系列交流接触器能效等级为3级 (LC1D09 → LC1D18) 和2级 (LC1D25 → LC1D38), 产品最大吸持功率低于9.5VA。  
 AC/DC: - use of this product in EMC environment B may require mitigation measures to avoid unwanted disturbance.  
 - full open AC at 10%Us





**Definite Purpose ratings, 3 Phase, Load wiring: breaking all lines**  
 Hermetic refrigeration compressor  
 特定用途额定值, 3 相, 断开所有线路  
 封闭式制冷压缩机设备

| Device | FLA | LRA   |       |       |
|--------|-----|-------|-------|-------|
|        |     | 240 V | 480 V | 600 V |
| LC1D09 | 9   | 54    | 45    | 36    |
| LC1D12 | 12  | 72    | 60    | 48    |
| LC1D18 | 18  | 108   | 90    | 72    |
| LC1D25 | 25  | 150   | 125   | 100   |
| LC1D32 | 32  | 192   | 160   | 128   |

Only applicable for UL/CSA marked products except DC coil.

**UL/CSA Lighting Ratings**  
 UL/CSA 照明电流额定值

| Device 设备 | Ballast, 600 V 镇流器 | Tungsten, 480 Y / 277 V 钨丝灯  |
|-----------|--------------------|------------------------------|
| LC1D09    | 20 A               | 20 A                         |
| LC1D12    | 25 A               | 25 A <small>CSA only</small> |
| LC1D18    | 32 A               | 25 A                         |
| LC1D25    | 40 A               | 40 A                         |
| LC1D32    | 50 A               | 50 A                         |
| LC1DT20   | 20 A               | 20 A                         |
| LC1DT25   | 25 A               | 25 A <small>CSA only</small> |
| LC1DT32   | 32 A               | 25 A                         |
| LC1DT40   | 40 A               | 40 A                         |

**⚠️ DANGER / 危险**  
**HAZARD OF ELECTRIC SHOCK, EXPLOSION, OR ARC FLASH**  
 Disconnect all power before servicing equipment.  
**Failure to follow these instructions will result in death or serious injury.**  
 可能有触电、爆炸或电弧灼伤危险  
 在此电力设备上进行操作时, 请先断开所有电源。  
 不遵循上述规定将可能导致人员伤亡。

**Elevator Duty HP ratings / 电梯专用马力 (HP) 额定值**

|        | One Phase 单相 | Three Phases 三相 |       |       |       |
|--------|--------------|-----------------|-------|-------|-------|
|        | 230 V        | 200/208 V       | 230 V | 460 V | 575 V |
| LC1D12 | 1.5          | 2               | 3     | 7.5   | 7.5   |
| LC1D18 | 3            | 5               | 5     | -     | -     |
| LC1D25 | 3            | 5               | 7.5   | 15    | 20    |
| LC1D32 | 5            | 10              | 7.5   | -     | -     |

Only applicable for UL/CSA marked products except DC coil.

**For Motor Starting Use Schneider Electric Overload Relay Series LR\***  
 电动机启动请使用施耐德电气LR系列热过载继电器。