

PoE+

IEEE 802.3at

25W/54V (Max 420mA)

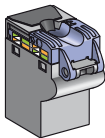
Power over Ethernet Plus

IEC 60512-99-001

Cat 6_A



Cat 6



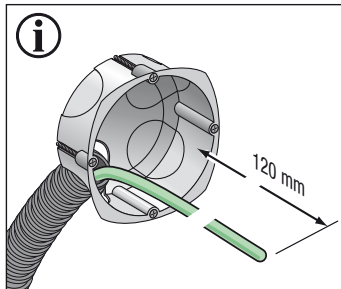
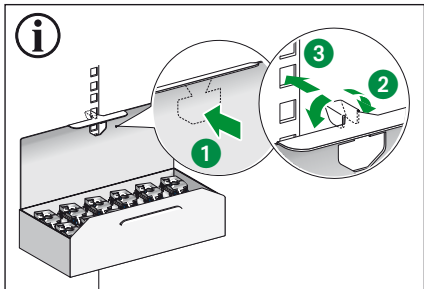
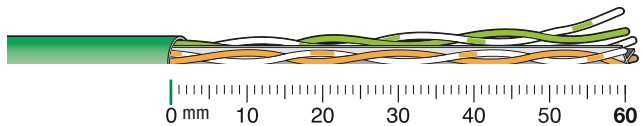
Cat 5e

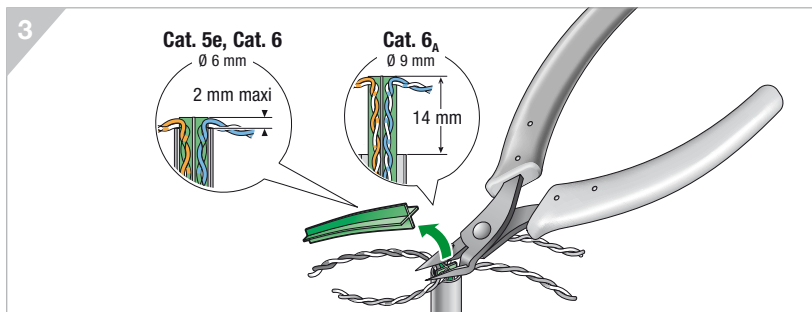
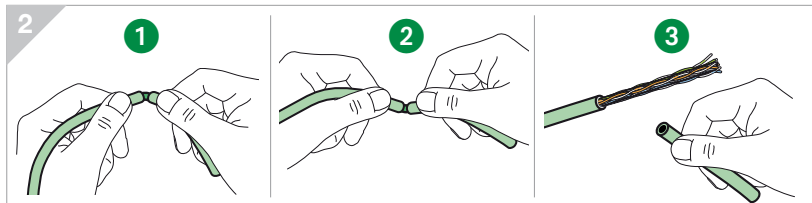
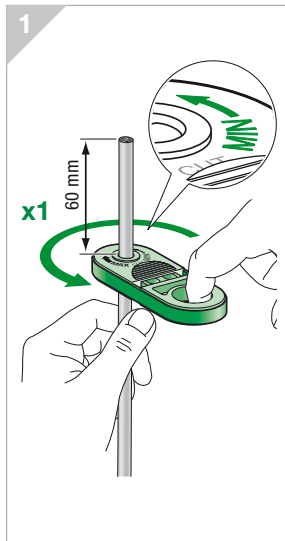
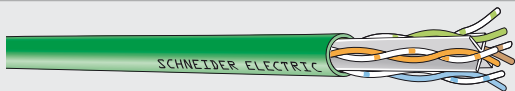


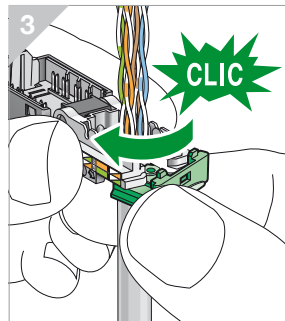
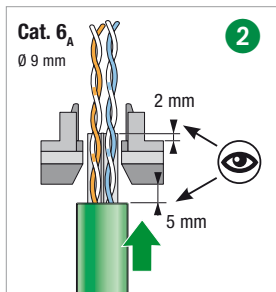
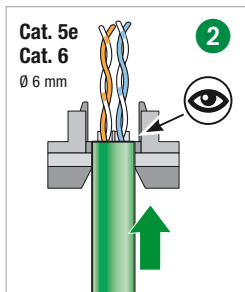
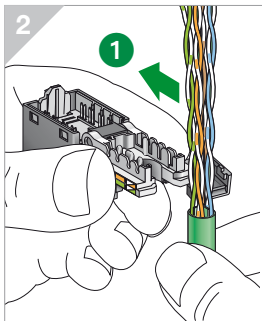
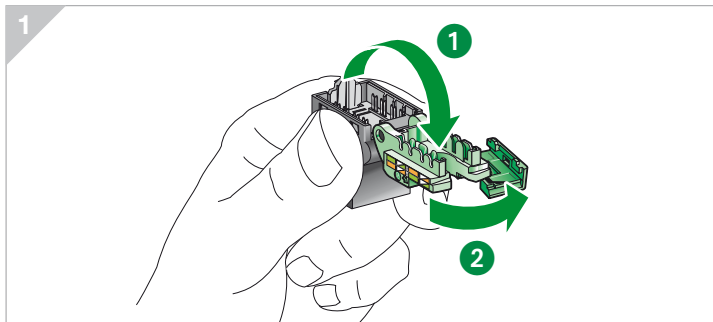
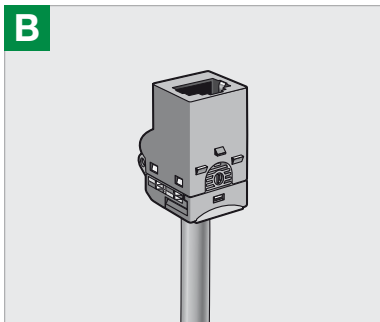
V3

Actassi S-One Unshielded

Schneider
Electric

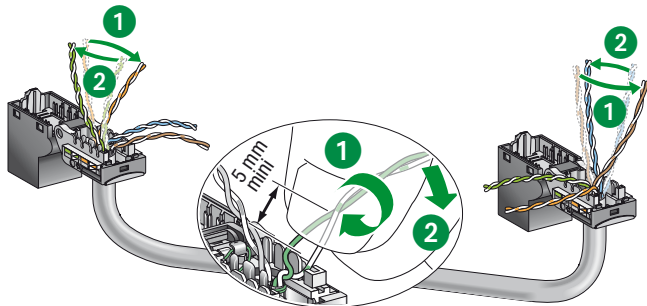
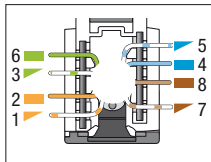


A**U/UTP**

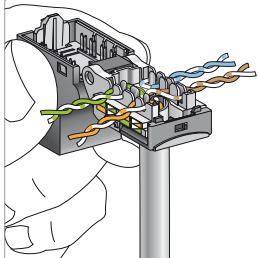


4

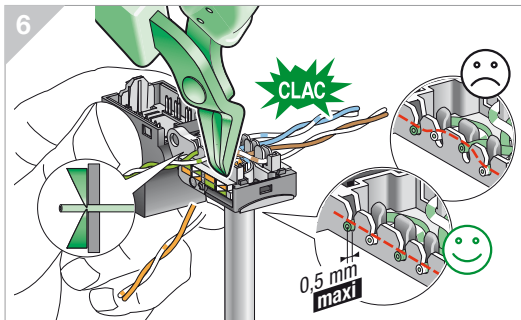
EIA-TIA 568B (100Ω)



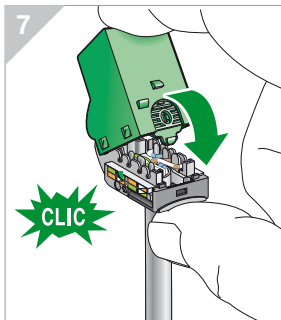
5



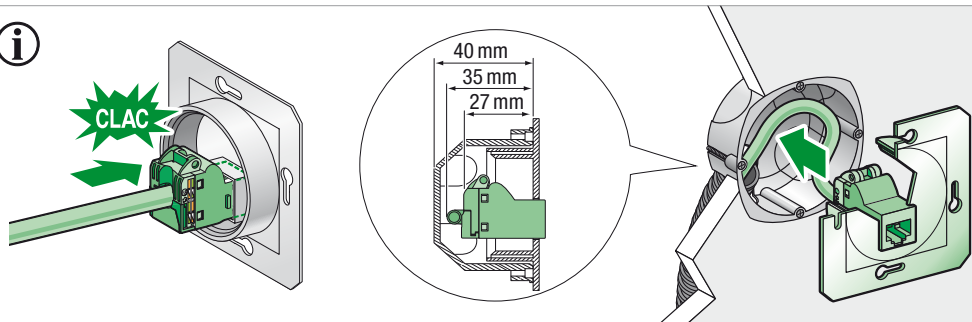
6



7



i



i

