

Thank you for choosing **Schneider Electric** Pieno Unit. To ensure proper application of our product, please read through the following information before installation and use.

This application guide applies to the following products:

Cat. No.:	Description:
E82T25USB	13A Twin Gang Switched Socket with 2.1A USB

SPECIFICATIONS	
USB Input	: 220-250V~, 50/60Hz,0.45A
USB Output	: 5V=2.1A (2.1A Max for each port)
USB Compliance	: IEC 62368-1,BS EN 62368-1
USB protection	: Over heat, over current, over voltage
13A socket Voltage	: 250V~
13A socket Current	: 13A
13A socket Compliance	: BS1363-2,MS589-2,SS145-2
Mounting centre	: 120.6mm
Operation Temperature	: 0-40°C



APPLICATION GUIDE 13A Socket with USB

CAT. NO.
E82T25USB

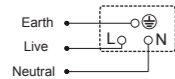
Pieno

MFR5937003 Y00

IMPORTANT NOTE

- The products must be installed by qualified electricians
- Please check your local wiring regulations before installation
- Suggest to install product with 47mm depth wallbox
- Suitable for mounting on concrete or other non-combustible surface only
- Safekeeping the surround to prevent damage during product installation
- Turn off the power supply when you clean the product. Use a piece of soft cloth or tissue paper to wipe off the dust and dirt on the surface. Avoid using corrosive chemicals
- Kindly ensure your device's Battery Charging Specification suitable with this USB Charger before charging
- Do not insert metal objects into USB Charger
- User will feel some heat at the product surface when charging is in progress
- Device's charging performance will be impacted by device's charging protocol, quality of charging cable used, and other relevant factors
- Some charging cables with electronic design might functions as charging device.
- This permanently connected equipment does not contain internal disconnected device, a readily accessible disconnected device should be provided externally
- Not advisable to use with multi adaptors
- Not allow reserve charging
- Indoor use only

WIRING DIAGRAMS



Fixing :

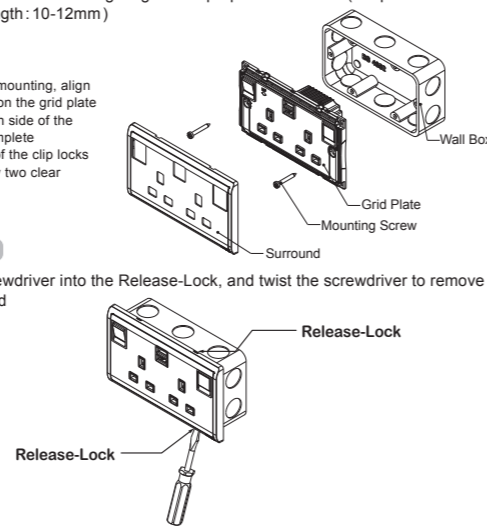
Please refer to the following diagram for proper installation: (Proper wire stripping length: 10-12mm)

Remarks:

For surround mounting, align the clip locks on the grid plate and press both side of the surround. Complete engagement of the clip locks is indicated by two clear clicks.

Remove :

Insert a screwdriver into the Release-Lock, and twist the screwdriver to remove the Surround



感謝閣下選用**Schneider Electric**施耐德電氣Pieno系列產品。在安裝及使用本產品前，請仔細閱讀此手冊內容。

此手冊適用於以下產品型號：

型號：	描述：
E82T25USB	13A 兩位連保護門有掣帶 2.1A USB插座

產品規格	
USB輸入	: 220-250V~, 50/60 Hz,0.45A
USB輸出	: 5V=2.1A (每個口最大輸出2.1A Max)
USB安全標準	: IEC 60950-1
USB模組保護功能	: 過溫保護,過流保護,過壓保護
13A插座額定電壓	: 250V~
13A插座額定電流	: 13A
13A插座安全標準	: BS1363-2
安裝孔中心距	: 120.6mm
使用環境溫度	: 0-40°C



使用說明 13A帶USB插座

型號
E82T25USB

Pieno

MFR5937003 Y00

注意事項

- 產品安裝須由符合資格的電工完成
- 安裝前，請確認產品符合當地相關布線規範
- 請用最小47毫米深度牆盒安裝產品
- 產品僅適宜安裝在混凝土或不易燃的表面上
- 產品安裝期間，請妥善放置與保管邊框/面蓋，以防壓傷損壞
- 清潔時，必須先關閉電源，再用輕微濕潤的軟性布料或紙巾擦拭產品表面，以清除塵埃及穢物。請勿使用帶有腐蝕性的化學制劑擦拭，比如鹼性洗滌劑、酸性洗滌劑、稀釋劑、汽油、殺蟲劑等。否則，本產品可能發生表面開裂或其它故障
- 使用本充電插座充電前，須確認待充(物)的電池滿足充電電池規範
- 請勿將回型針等細小金屬物插入本充電插座的充電接口
- 充電時，充電插座表面產生微熱，並非異常現象
- 充電設備的功率取決於其支持的充電協議類型，設備本身的電量，充電線的質量等因素
- 市場上某些充電線的設計相等於充電設備
- 此永久性連接式設備不包含內部斷開裝置，相應的斷開裝置應當安裝在設備的外部
- 不宜使用壺拖多頭充電線
- 避免倒灌電壓
- 只供室內使用

接線圖



安裝：

請按照下列次序安裝：

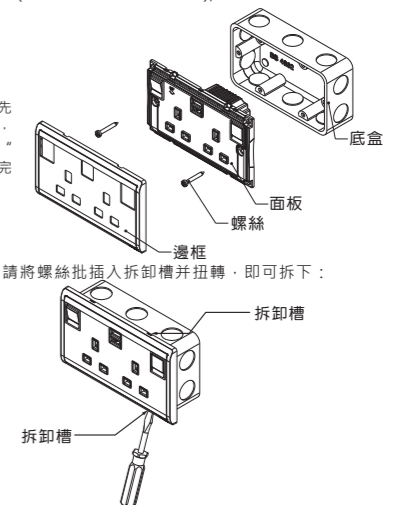
- 把電線插入接線端子(建議剝線長度10-12mm),然後鎖緊螺絲以固定位置
- 把面板固定於底盒
- 安裝邊框

注意：

安裝邊框於面板時，請先確認及對準鎖扣的位置，然後用力壓下直至聽到“咔嚓”聲以確認邊框已完全嵌入。

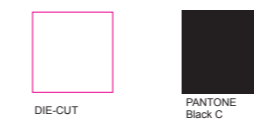
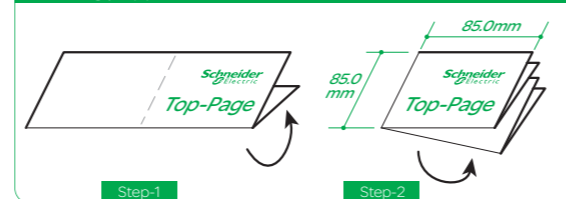
拆卸：

如有需要拆卸邊框，請將螺絲批插入拆卸槽并扭轉，即可卸下：



ECN201906386	Initial Release, 2019/01/025	ZXZ	00
DECN/ECN/TCAN	DESCRIPTION	DRN	REV
NUMBER :	MFR5937003	Revision:	Sheet:
		00	1/1

> Folding / Appearance & Size :



User Manual \ USB Socket \ Pieno
EN + 中文繁體 · 中國香港地區適用

> Note:

- 1/ 70g high quality uncoated Book-Paper (white).
- 2/ Double side printing.

Released for Manufacturing
Printed on 2020/02/25

> ARTWORK :
File Size = A3

