

zh en



手机 App

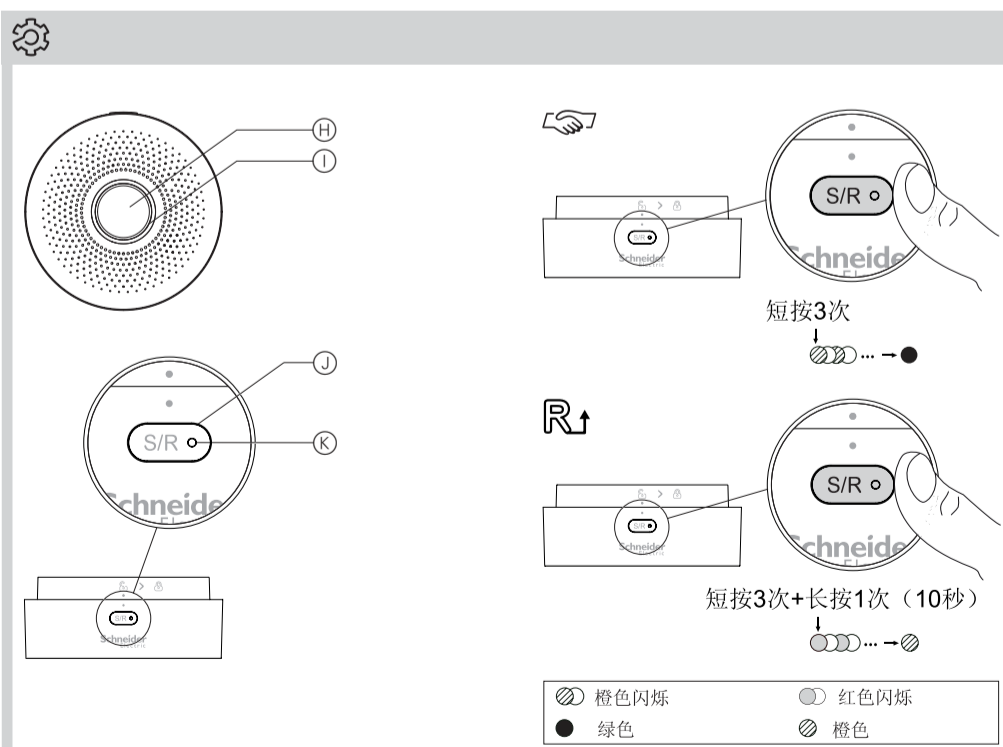
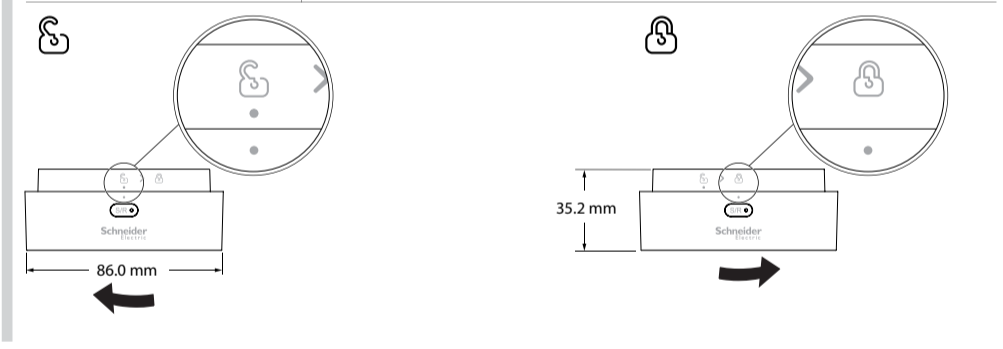
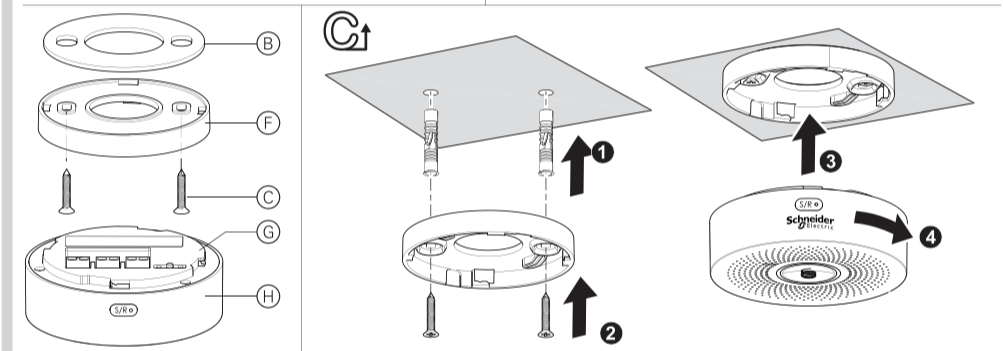
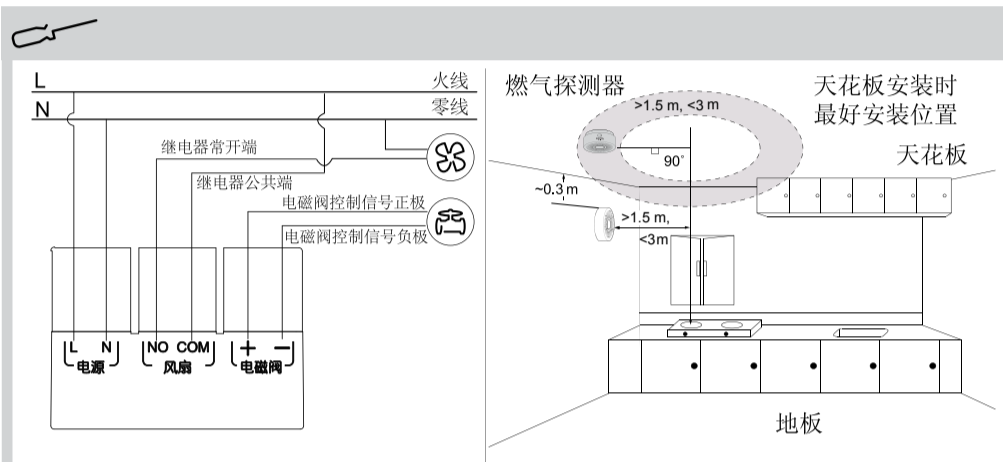
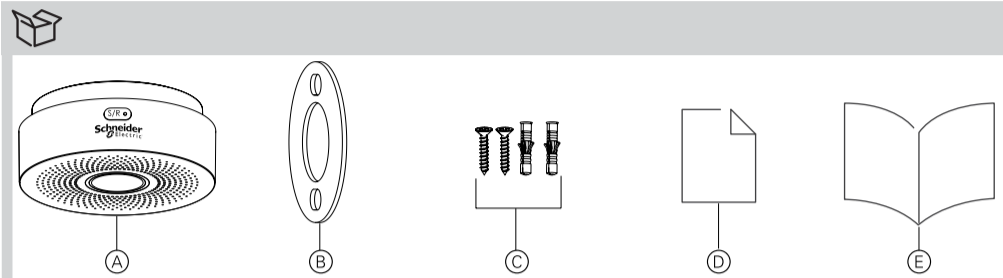


型号: CCT597011_C1

智能感应器



该产品与wiser网关CCT501900或CCT501400_C1 匹配工作请参考 https://download.schneider-electric.com/files?p_Doc_Ref=MFR1569800



zh 测量范围为0~100%LEL的独立式可燃气体探测器 型号: CCT597011_C1

安全提示

▲▲ 危险

触电, 爆炸或电弧闪光危险

- 本产品应由具有相应资质和/或获得相应证书的电气人员进行安装和维护。
 - 本产品应仅用于本说明书中所述的用途, 且必须根据接线规则和当地法规进行安装。
 - 使用带电部件时务必遵守相关规定。
 - 对产品进行任何工作前, 务必切断电源。
 - 重新连接电源之前, 本产品必须正确安装且经过测试, 确保操作的安全性。
- 若不遵守此说明, 则可能会导致死亡或重伤。**

注意
设备损坏风险
请遵照技术参数操作产品。
若不遵守本说明可导致产品损坏。

警告
违规设备操作
使用5年后(无污染环境)下, 更换产品传感器以保持良好灵敏度。
燃气泄露导致报警后, 务必:
• 关闭燃气阀(若未使用本产品的燃气阀自动关闭功能)。
• 扑灭潜在火源。
• 避免打开电气设备(开关会产生火花)。
• 开窗以便通风。
若不遵守此说明, 可导致死亡、重伤、或设备损坏。

前提条件
扫描二维码下载手机App到你的智能手机, 以配置和安装本设备。



App Store的 URL: <https://itunes.apple.com/us/app/wiser-electric-cn/zh/product-range-download/65750-择尚无线智能家居/#/software-firmware.tab>



Android Store的 URL: <https://www.schneider-electric.cn/zh/product-range-download/65750-择尚无线智能家居/#/software-firmware.tab>

产品简介

本产品为室内用测量范围为0~100%LEL的独立式可燃气体探测器, 用于探测房间内甲烷(CH₄)泄露, 当探测到燃气泄漏达到报警浓度时, 发出声光报警, 同时给出自动控制信号触发应对措施。

- 功能:
- 探测到燃气泄漏并达到设定报警浓度时发出报警声音, 红色LED闪烁。
 - 发送消息给手机App以通知用户。
 - 燃气泄漏触发报警时:
 - 带辅助输出功能的继电器动作, 风扇输出端给出信号控制排风扇排风。
 - 电磁阀输出端给出脉冲信号, 关闭燃气电磁阀。

- 特性:
- 本产品采用半导体传感器, 具有高稳定性, 低飘移的优点。
 - 产品上电后LED绿灯亮, 蜂鸣器“嘀”的一声, 电路进入预热阶段, LED“绿-红-黄”灯持续交替闪烁约3分钟后停止。
 - 燃气(CH₄)泄露超过阈值时, LED红灯闪烁并持续发出“嘀-嘀”报警声。
 - 产品内部传感器故障时, LED进入黄灯常亮状态, 并持续发出“嘀”声。

注意 不要私自拆解本产品, 以免触电。

注意
设备损坏风险
本产品只能探测燃气(CH₄), 不能探测其它气体例如一氧化碳。
• 房屋装修时建议移除本产品
• 产品周围避免喷雾或喷洒悬浮颗粒物
• 为避免产品上有油性附着物降低灵敏度, 请保持产品表面燃气通风孔清洁。清洁产品时, 避免液体进入产品。清洁后须进行自检测试。
• 不要用打火机测试设备。打火机在燃气通风孔附近打火可损坏产品内部传感器
• 按产品说明书定期维护设备
• 使用本产品的同时, 也要时刻保持警惕, 防止燃气泄漏
• 为了产品工作更加稳定, 使用和测试请在产品上电24小时后进行。
若不遵守本说明, 可导致设备损坏。

包装内容

- Ⓐ 燃气探测器
- Ⓑ 双面胶板
- Ⓒ 螺丝: M3.5 X 15mm, 2枚 膨胀螺丝, 2枚
- Ⓓ 合格证
- Ⓔ 说明书

连接元件
Ⓕ 安装底座
Ⓖ 产品本体

安装场所
本产品可以天花板安装, 也可以墙面安装。

- Ⓘ 墙面安装时, 推荐距离燃气装置水平方向1.5m~3m, 距离天花板最多30cm。
- 天花板安装时, 确保天花板厚度大于15mm以安装膨胀螺丝, 并保持产品距离燃气装置水平方向1.5m~3m范围内。

注意
设备损坏风险
• 不要把设备安装在粉末或蒸汽环境中。
• 不要把设备安装在风扇或门窗附近。
若不遵守本说明, 可导致设备损坏。

安装设备
移除产品本体
逆时针旋转产品本体直至旋出。

使用M3.5螺丝固定安装底座之前, 先使用双面胶板把安装底座粘住。

连接设备
不适用于手动燃气阀。

重新装入产品本体
把产品本体放入安装底座顺时针旋转直至锁紧。

安装设备
① 自检按钮
② LED指示灯
③ S/R按钮
④ 编程指示灯
更多信息, 请参阅系统用户指南。

设置设备
调试设备
短按S/R按钮3次, 每次间隔≤1.2秒, 以连接到可用的无线网络。

重置设备
短按S/R按钮3次(每次间隔≤1.2秒), 接着长按>10秒, 设备恢复到出厂设置。
设备重置成功后, 所有配置数据, 用户数据和网络数据均被删除。
更多信息, 请参阅系统用户指南。

声光报警行为
建议每月至少进行一次设备自检。
短按自检按钮, LED“红-绿-黄”灯闪烁几分钟直至变绿灯, 此时表示自检成功完成。

状态	LED灯	报警
预热	持续“绿-黄-红”闪烁	无
待机	绿色	无
自检	持续“红-绿-黄”闪烁	持续“嘀嘀”声
报警	红色闪烁	持续“嘀嘀”声
故障	黄色	持续“嘀”声

更多信息, 请参阅系统用户指南。

操作设备

测试设备
按下自检按钮或通过手机App来测试设备。

配置设备
可通过手机App配置设备。

更多信息, 请参阅系统用户指南。

编程指示灯行为

请参阅系统用户指南。

故障排除

故障现象	原因分析	排除方法
上电后一直处于预热状态(LED灯一直闪烁无法进入常绿状态)	设备长时间未上电 在预热状态时用燃气测试	上电24小时后观察设备 预热状态不要用燃气测试
LED灯常黄	传感器故障	请咨询施耐德电气客户支持热线

请参阅系统用户指南。

技术参数

工作电压	AC 220V 50/60 Hz
探测气体	天然气
报警浓度	7%LEL (甲烷CH ₄)
测量误差	±3%LEL
报警声压	70dB (1米处)
工作大气压	800~1100 hPa
辅助输出	继电器输出; 电磁阀控制信号
继电器类型	1C干接点, 触点 负载3A AC 250V
电磁阀信号	DC 12V 300ms
通信接口	2.4GHz, IEEE 802.15.4
防护等级	IP41
工作温度	-10°C ~ 55°C (室内使用)
工作湿度	0~93%
产品尺寸	φ86.0mm X 35.2mm
标准	GB 15322.2-2003
证书	中国RoHS

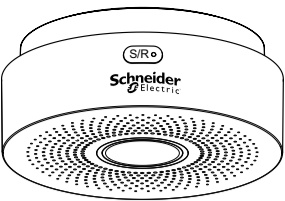
部件名称	有害物质					
	铅 (Pb)	汞 (Hg)	镉 (Cd)	六价铬 (Cr(VI))	多溴联苯 (PBB)	多溴二苯醚 (PBDE)
印刷电路板组件	x	o	o	o	o	o
塑料	o	o	o	o	o	o
金属	o	o	o	o	o	o

本表格依据 SJ/T11364 的规定编制。
O: 表示该有害物质在该部件所有均质材料中的含量均在GB/T 26572 规定的限量要求以下。
X: 表示该有害物质至少在该部件的某一均质材料中的含量超出GB/T 26572 规定的限量要求。

注册商标
• Apple® 和 App Store® 是 Apple公司注册商标。
• Android™ 是 Google公司注册商标。
所有其他商标和注册商标均为各自所有者的财产。

施耐德电气(中国)有限公司

北京朝阳区望京东路6号A座
客户支持热线: 400 810 1315
se.com/contact



en zh



Wiser Mobile app



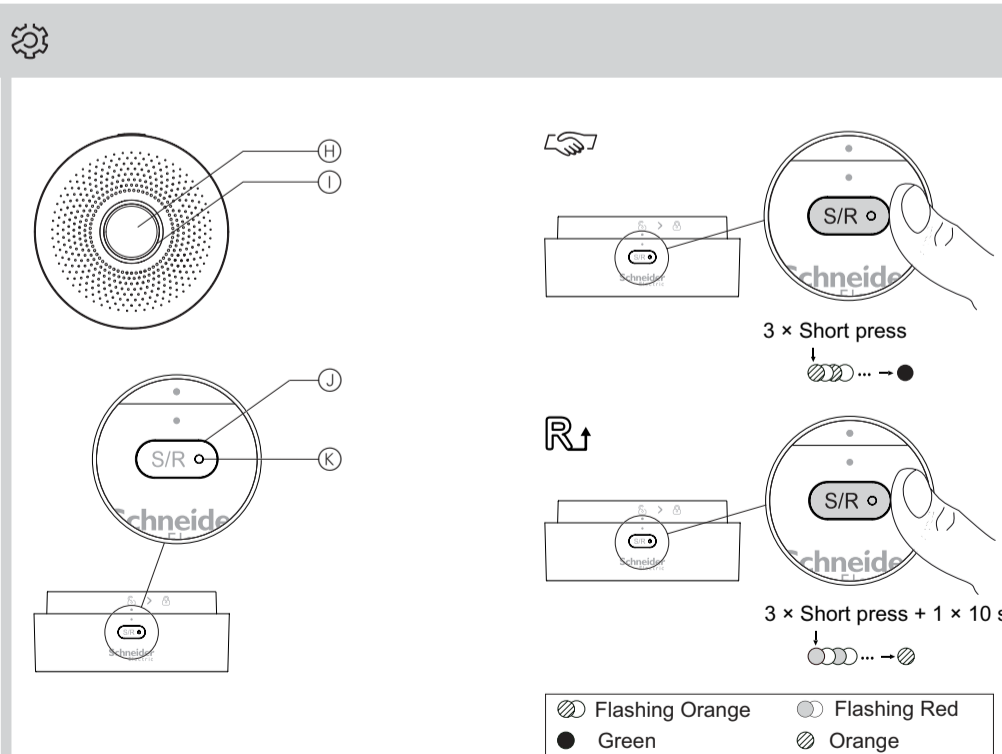
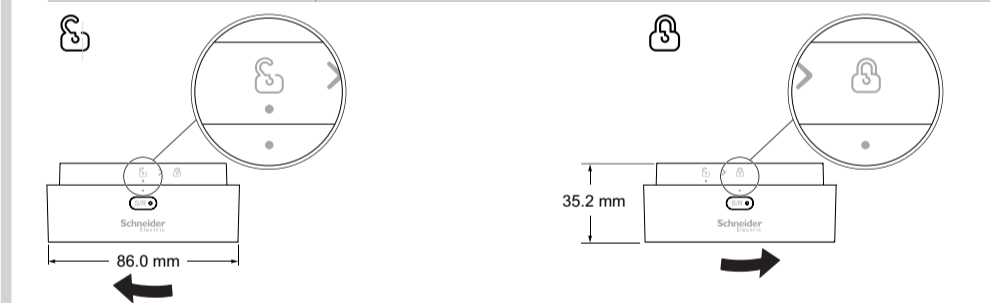
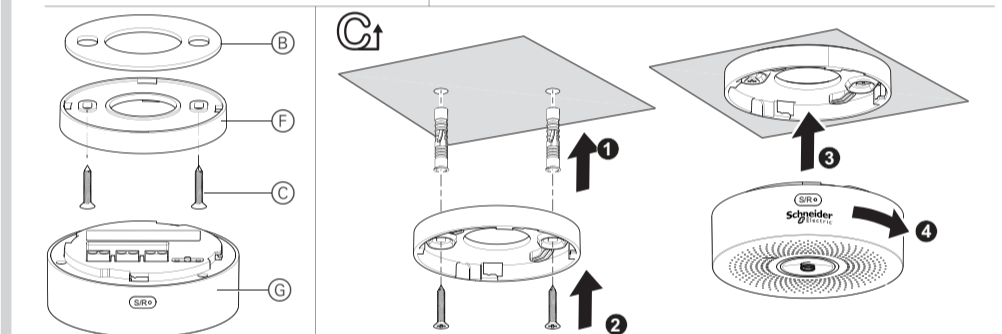
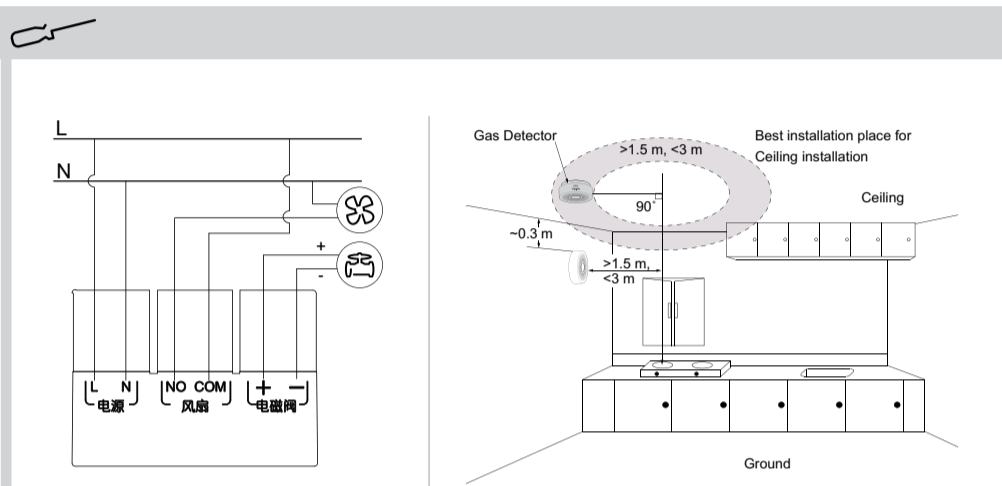
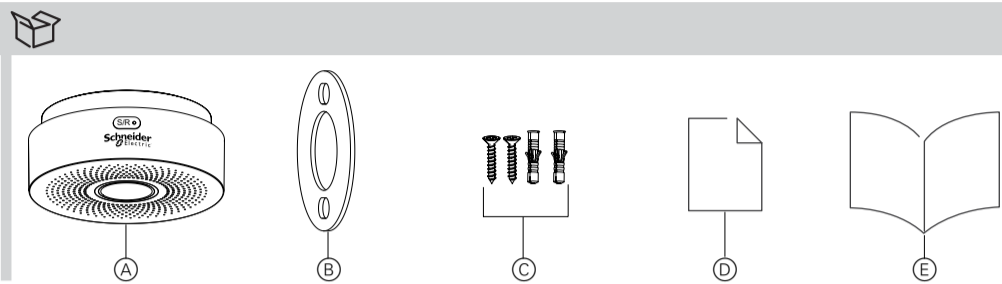
CCT597011_C1

Wiser

Schneider Electric



Works with Wiser Hub CCT501900. Refer to the system user guide for more information:
https://download.schneider-electric.com/files?p_Doc_Ref=MFR1569800



en Wiser Gas Detector
CCT597011_C1

For your safety

▲ ▲ DANGER

RISK OF ELECTRIC SHOCK, EXPLOSION OR ARC FLASH

- This product must only be installed and serviced by appropriately qualified and/or licenced electrical personnel.
- This product must only be used for the purpose described in these instructions and must be installed in accordance with the wiring rules and regulations in that location.
- Observe the regulations while working on live parts.
- Isolate the electrical supply before doing any work on this product.
- Ensure that the product has been correctly installed and tested for safe operation before reconnecting the electrical supply.

Failure to follow these instructions will result in death or serious injury.

NOTICE

RISK OF DAMAGE TO DEVICE

Always operate the product in compliance with the specified technical data.

Failure to follow these instructions can result in equipment damage.

▲ WARNING

UNEXPECTED EQUIPMENT OPERATION

Replace the device sensor after 5 years of usage (**no pollution environment**) to maintain optimum sensitivity.

When gas detector alarm starts due to gas leakage exceeding set level, make sure to:

- Turn off gas valve (if not using automatic valve, shut off feature of this device)
- Douse potential source of fire
- Avoid switching on electric appliances (which can generate spark)
- Open the windows to enable air flow

Failure to follow these instructions can result in death, serious injury, or equipment damage.

Prerequisites

Scan the QR code to download the Wiser by SE app onto your smartphone to configure and control the Wiser devices.



App Store URL:
<https://itunes.apple.com/us/app/wiser-by-se/id1026806919?is=1&mt=8>



Google Play Store URL:
<https://play.google.com/store/apps/details?id=com.schneiderelectric.WiserBySE>

Getting to know the product

The Wiser Gas Detector (the *device*) detects gas leakage in a room and triggers an alert, notifies the user and automatically performs corrective actions. This device is for indoor use only and its measurement range is 0 ~ 100% LEL.

Functions:

- Sounds a warning alarm on detecting a gas leak.
- Sends a notification message to the user through the mobile app.
- When gas leakage exceeds specified levels, the detector will:
 - actuate exhaust fan to expel gas, and
 - turn off the gas valve.

Features:

- This device has a high stability and low drift semiconductor sensor.
- When powered on, pre-heating stage starts and LED flashes green-yellow-red continuously. After pre-heating stage, the LED constantly glows green.
- When gas (CH₄) leakage exceeds set level, LED flashes red with continuous 'di-di' sound.
- When the internal sensor is faulty, LED will constantly glow yellow, with continuous 'di' sound.

i Do not disassemble device to avoid risk of electric shock.

NOTICE

RISK OF DAMAGE TO DEVICE

This device can only detect natural gas such as (CH₄) not other toxic gases such as carbon monoxide.

- Please do not install this device before the house/dwelling decoration is finished.
- Avoid spraying aerosol or suspended particulates around this device, and avoid being affected by some volatile substances (including, but not limited to adhesive such as silica gle, paint, alcohol, etc).
- To avoid reduced sensitivity due to oil stain adhesion on the device, clean the gas input surface. While cleaning, avoid any liquid leaking into the device. Self-test is required post this activity.
- Do not test the device using a lighter. Pointing it to the gas input area of the device can potentially damage the internal sensor.
- Perform regular maintenance of the device as suggested in the user manual.
- In addition to using this device, for additional safety, be aware at all times.
- To ensure the stability of the product operation, please use or test this product after it is powered on for 24 hours.

Failure to follow these instructions can result in equipment damage.

Package contents

- (A) Wiser Gas Detector
- (B) Double sided adhesive pad
- (C) Screws:
Quantity 2 M3.5 × 15 mm
Quantity 2 wall plug
- (D) Certificate
- (E) Installation instructions

Connection elements

- (F) Installation base
- (G) Module

Choosing the installation location

The Wiser Gas detector can be mounted either on the wall or on the ceiling.

- For a wall mount, recommended distance is at most 0.3 m from ceiling and about 1.5 m to 3 m distance from gas outlet.
- For a ceiling mount, make sure there is sufficient depth (15 mm) in ceiling to install the device and distance of about 1.5 m to 3 m vertically above gas outlet.

NOTICE

RISK OF DAMAGE TO DEVICE

- Do not install the device in places exposed to lampblack or vapour.
- Do not install the device near fans, windows or doors.

Failure to follow these instructions can result in functional failure or equipment damage.

Mounting the device

Removing the module



Rotate the module anti-clockwise until it unlocks and then remove.

i Use the double sided adhesive pad to affix the installation base on the ceiling before securing it with M3.5 screws.

Connecting the device



Not applicable for manual gas valves. **i**

Reinstalling the module



To install, position the module on the installation base and rotate clockwise until it locks.

Operating elements

- (H) Self-test push button
- (I) LED indicator
- (J) S/R button
- (K) Programming indicator

For details, refer to the system user guide.

Setting the device

Commissioning the device



Short press (<1 s) the S/R button 3 times to connect to an available network or to create a new network.

Resetting the device



Short press (<1 s) the S/R button 3 times and then long press the S/R button once for >10 s to reset the device to factory default mode.

Upon successful device reset, all configuration data, user data, and network data is deleted.

For details, refer to the system user guide.

Behaviour of LED indicator and alarm

It is recommended to self-test the device at least once a month. After pushing the self-test button, the LED will flash red, green and yellow in a sequence for several minutes until it turns green which indicates successful completion of the self-test.

Status	LED	Alarm
Pre-heating	Flashes green-yellow-red continuously	-
Idle	Constant green	-
Self-Test	Flashes red-green-yellow continuously	Continuous 'di-di'
Alarm	Flashing red	Continuous 'di-di'
Fault	Constant yellow	Continuous 'di'

For details, refer to the system user guide.

Operating the device

Testing the device

The device can be tested by pressing the self-test push button or through the mobile app.

Configuring the device

The device can be configured through the mobile app.

For details, refer to the system user guide.

Behaviour of the programming indicator

Refer to the system user guide.

Troubleshooting

Issue	Primary Cause	Resolution
Always in pre-heating state after power on. (LED flashed in three colours without going into constant green state)	The device has not been powered on for long. The device was tested with gas when it was in pre-heating state.	Observe the device after powering on for 24 hours. Do not test the device with gas when it is in pre-heating state.
LED constantly glows yellow.	Fault with sensor.	Contact customer support hotline.

Refer to the system user guide.

Technical data

Operating voltage	AC 220 V, 50/60 Hz
Communication interface	2.4 GHz, RF connection (IEEE 802.15.4)
Detected gas	CH ₄
Alarm settings	7% LEL (CH ₄)
Tolerance	±3% LEL
Sound pressure	70 dB (at 1 m)
Atmospheric pressure	800 ~ 1100 hPa
Auxiliary output	Relay output and Valve control signal
Relay type	1C dry contact (3A, AC 250V)
Valve control signal	DC 12V 300 ms
IP rating	IP41
Operating temperature	-10 °C to 55 °C (indoor only)
Operating humidity	0% to 93%
Product dimension	Ø 86.0 mm × 35.2 mm
Standard	GB 15322.2-2003
Certification	China RoHS compliant

Trademarks

- Apple® and App Store® are brand names or registered trademarks of Apple Inc.
- Android™ is a registered trademark of Google LLC.

Other brands and registered trademarks are properties of their relevant owners.

Schneider Electric Asia Pacific Limited

11th Floor, Kerry Centre, 683 King's Road, Quarry Bay, Hong Kong
se.com/contact