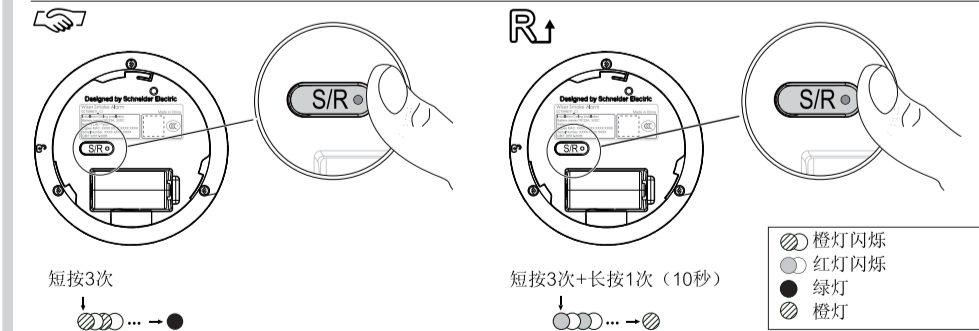
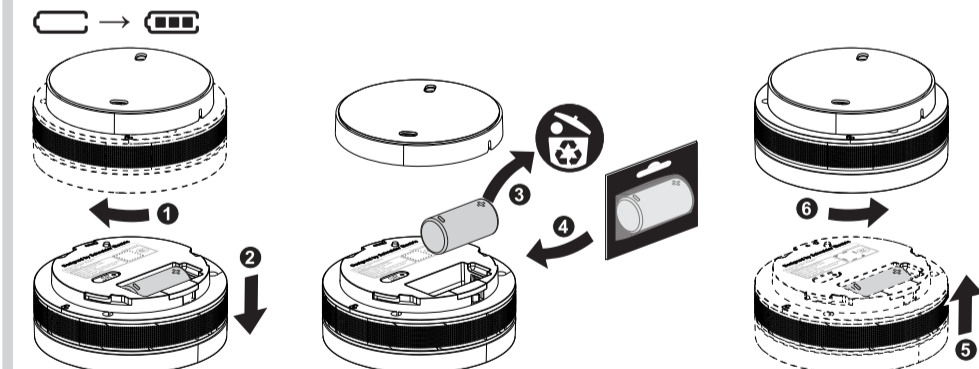
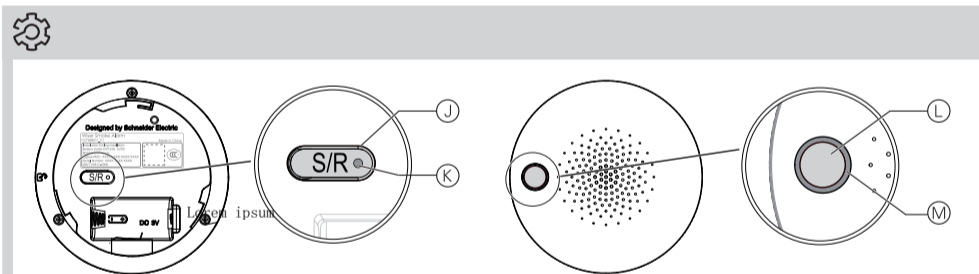
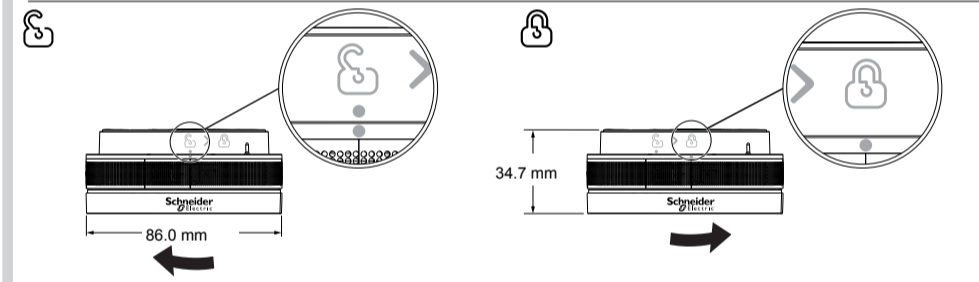
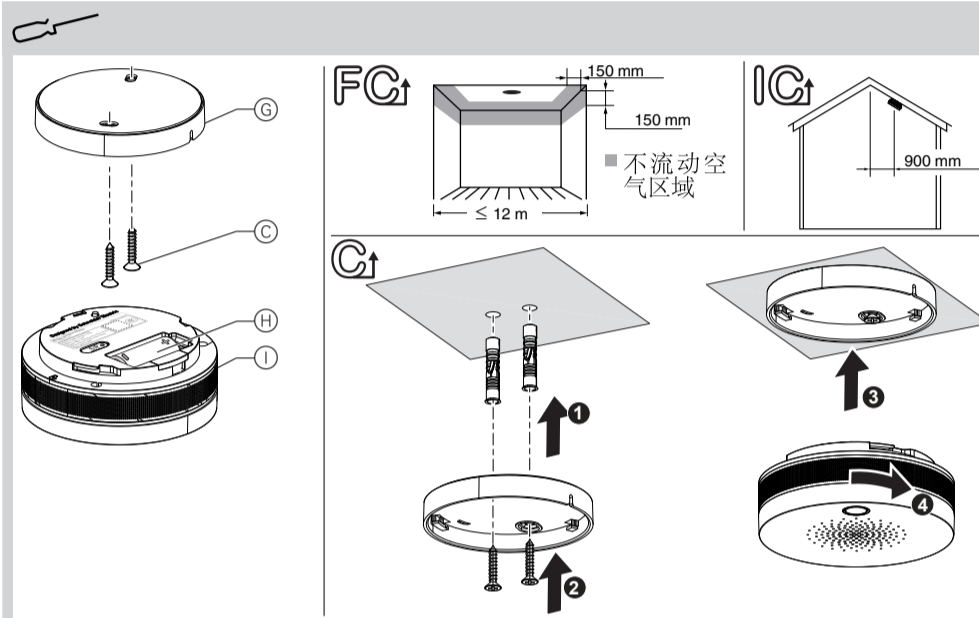
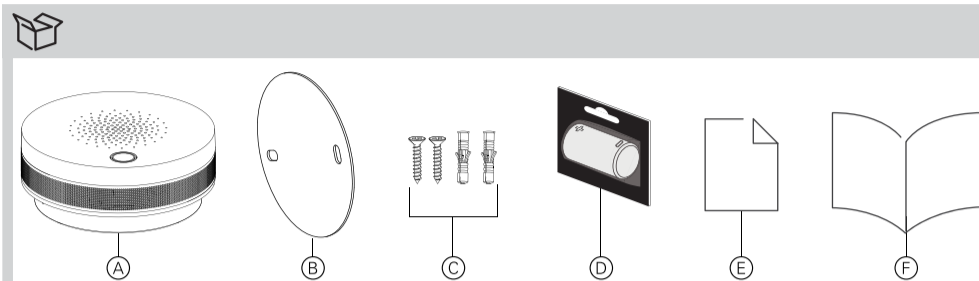


zh en



型号: CCT596011_C1

智能感应器



zh 独立式光电感烟火灾探测报警器

型号: CCT596011_C1

安全提示

注意

设备损坏风险

请遵照技术参数操作产品。

若不遵守本手册可导致产品损坏。

火灾逃生步骤请参阅系统用户手册。

前提条件



App Store 的 URL:
https://itunes.apple.com/us/app/wiser-by-se/id1026806919?ls=1&mt=8



Android Store 的 URL:
https://www.schneider-electric.cn/zh/product-range-download/65750-舜尚无线智能家居#/software-firmware.tab

产品介绍

烟雾探测器 (本设备) 是一款家用型光电感烟火灾报警器, 采用光电式感烟器件、阻燃工程材料及优良的生产工艺, 工作稳定, 能够探测火灾时产生的烟雾并及时发出声光报警信号, 并向手机 App 发送一条通知。

特性:

- 稳定
- 低功耗
- 3V 电池供电
- 自检功能
- 低电压报警
- 四种火灾响应均衡

更多信息, 请参阅系统用户指南。

包装内容

- (A) 烟雾探测器
- (B) 双面胶板
- (C) 螺丝
- (D) 电池: CR123A/CR17335
- (E) 合格证
- (F) 说明书

连接元件

- (G) 安装底座
- (H) 电池仓
- (I) 产品本体

安装场所

请根据天花板类型进行安装。

水平天花板

烟雾、热量和燃烧产物上升到天花板会横向传播, 烟雾探测器安装在天花板的中央是首选位置。请与灯具或装饰物保持至少30厘米距离, 同时远离墙壁和角落至少15厘米。大厅如果超过12米, 应在大厅两端分别安装。

倾斜式天花板

请安装在距离尖顶水平方向90厘米处天花板上 (保护面积参考国标GB50116-98中相关规定)。

- 请确保天花板上至少有20mm深度空间来安装设备。
- 适用场所: 住宅、休息厅、咖啡厅、歌舞厅、宾馆、饭店、公寓、饮食店和旅馆等。
- 建议安装在房顶中央, 远离死角区域。
- 不宜安装的场所
 - 尘埃、粉末和水蒸气大量滞留的场所。
 - 有可能产生腐蚀性气体的场所。
 - 车库、厨房及正常情况下有烟停留的场所。
 - 温度过高、湿度过大的场所。
 - 风速大于15米/秒的场所。

安装设备

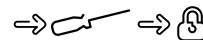
移除产品本体



逆时针旋转产品本体直到旋出。

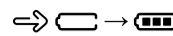
- 使用M3.5螺丝把安装底座装在天花板上之前, 先使用双面胶板把安装底座粘住。
- 请确保电池安装之前先去除塑料护套。

重新装入产品本体



把产品本体放入安装底座顺时针旋转直至锁紧。

电池更换



注意

设备损坏或性能下降

- 本设备只能使用CR123A/CR17335电池。
- 使用锂电池, 不要使用充电电池。

若不遵守此说明可导致产品损坏或性能下降。

操作部件

- (J) S/R按钮
- (K) 编程指示灯
- (L) 自检按钮
- (M) LED指示灯

更多信息, 请参阅系统用户指南。

设置设备

调试设备



短按S/R按钮3次 (每次间隔<1秒), 以连接到可用的无线网络。

设备重置



短按S/R按钮3次 (每次间隔<1秒) 接着长按1次 (时间>10秒), 设备恢复到出厂设置。

设备重置成功后, 所有配置数据, 用户数据和网络数据均被删除。

更多信息, 请参阅系统用户指南。

声光报警行为

LED 灯光和报警声音指示设备状态。

状态	灯光	警报声
正常状态	红色LED灯每53秒闪烁一次	无
测试状态	红色LED灯快速闪烁	急促的“嘀嘀”声
报警状态	红色LED灯快速闪烁	急促的“嘀嘀”声
静音模式	红色LED灯每10秒闪烁一次	无
低电量	红色LED灯每53秒闪烁一次	每53秒“嘀”一声
故障	黄色LED灯每53秒闪烁两次	每53秒“嘀”两声

- 静音功能必须在确保没有真正火灾危险情况下使用。
- 在设备处于报警状态下, 可短按自检按钮使灵敏度降低暂时平息不必要的报警。在已知非火灾报警下, 不要堵塞或以任何形式阻止设备报警。

操作设备

测试设备

每当按键按下时, 会出现“嘀”一声代表按键有效。

按下自检按键不松开保持1秒以上, 报警器红色的指示灯快速闪烁, 同时伴有“嘀嘀”的鸣叫声, 表明报警器工作正常, 松开自检按键报警器恢复正常工作。

本产品为家用型光电感烟火灾探测报警器, 火灾时能发出声光报警, 但不能灭火。

更多信息请参阅“声光报警行为”章节和系统用户指南。

注意

设备损坏

- 每月至少进行一次自检测试, 注意观察灯光报警信号是否正常。
- 不要使用明火测试。
- 不要安装在温度高、湿度大、油烟大的地方, 并确保设备周围空气环境清洁。
- 避免在设备附近有大量油漆、稀释剂等产生胶状悬浮物的物品, 以免影响设备正常检测。

若不遵守此说明可导致人身伤害和产品损坏。

编程指示灯行为

请参阅系统用户指南。

维护设备

烟雾探测器在安装并投入使用后, 每月需按下自检按钮对产品进行测试, 若发现故障时 (如蜂鸣器不响, 指示灯不亮), 应及时进行检查或咨询客户支持热线。

• 正常环境下, 电池寿命可达1年。待机 (温湿度不超范围, 无报警) 电池寿命达2年。但高温高湿等恶劣环境将缩短电池寿命。

• 当烟雾探测器报低电量故障时请及时更换同型号电池, 电池更换后, 按下自检按钮能发出声光报警即为更换成功。

• 应在即将调试前安装。

• 在安装前应妥善保管并采取相应的防尘、防潮、防腐蚀措施。

• 如发生故障或其他问题, 不要私自拆卸产品进行维修, 请断开电源, 并咨询施耐德电气客户支持热线。

• 在遇到真实火灾且设备报警后, 建议更换新电池。

注意

设备维护指导

- 不要私自拆解设备。
- 除电池外, 产品内部没有单独可维护部件。

若不遵守此说明可导致产品损坏

更多信息, 请参阅系统用户指南。

故障分析与排除

故障现象	原因分析	排除方法
上电后报警	探测器内严重污染	请咨询施耐德电气客户支持热线。
	室内有较大烟尘或水蒸气	待烟尘及水蒸气消除后重新上电。
	电路故障	请咨询施耐德电气客户支持热线。
上电后有短促“嘀嘀”声	电池电量低	请更换同型号电池。
	电路故障	请咨询施耐德电气客户支持热线。
报警后蜂鸣器不响或音量低	电池电量低	请更换同型号电池。
按下自检按钮不报警	电池没装好或极性装反	请重新安装电池注意极性。
	电池电量低	请更换同型号电池。
电路故障	请咨询施耐德电气客户支持热线。	

更多产品维修细节, 请咨询施耐德电气客户支持热线。

更多信息, 请参阅系统用户指南。

技术参数

LED报警指示灯	红色
报警声压	> 80 dB (距离产品3米)
电池	直流3V, CR123A/CR17335
电池寿命	正常使用 > 1年 (视实际使用情况可能有变化)
通信接口	2.4 GHz, 无线通信 (IEEE802.15.4)
防护等级	IP41
操作温度	-10 °C ~ 50 °C
操作湿度	≤ 95%
产品尺寸	φ 86.0mm x 34.7mm
执行标准	GB 20517-2006
证书	中国RoHS, CCC

部件名称	有害物质					
	铅 (Pb)	汞 (Hg)	镉 (Cd)	六价铬 (Cr(VI))	多溴联苯 (PBB)	多溴二苯醚 (PBDE)
印刷电路板组件	x	o	o	o	o	o
塑料	o	o	o	o	o	o
金属	o	o	o	o	o	o
电池	o	o	o	o	o	o

本表格依据 SJ/T11364 的规定编制。
O: 表示该有害物质在该部件所有均质材料中的含量均在GB/T 26572 规定的限量要求以下。

X: 表示该有害物质至少在该部件的某一均质材料中的含量超出 GB/T 26572 规定的限量要求。

注册商标

- Apple® 和 App Store® 是 Apple公司注册商标。
- Android™ 是 Google公司注册商标。

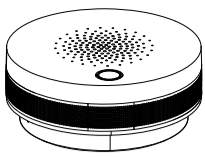
所有其他商标和注册商标均为各自所有者的财产。

施耐德电气 (中国) 有限公司

北京朝阳区望京东路6号A座

客户支持热线: 400 810 1315

se.com/contact



en zh

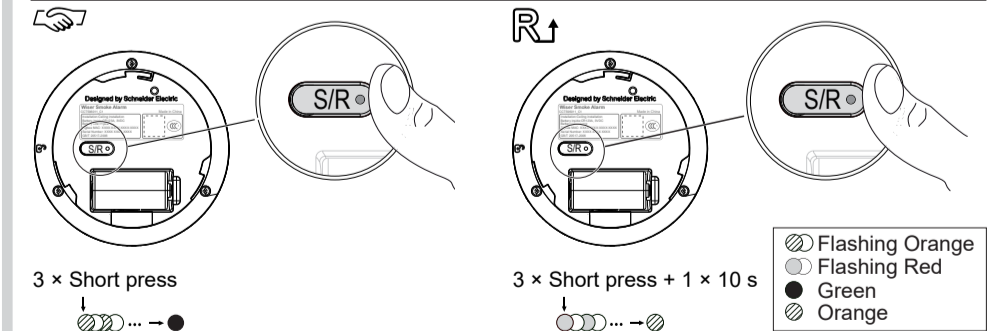
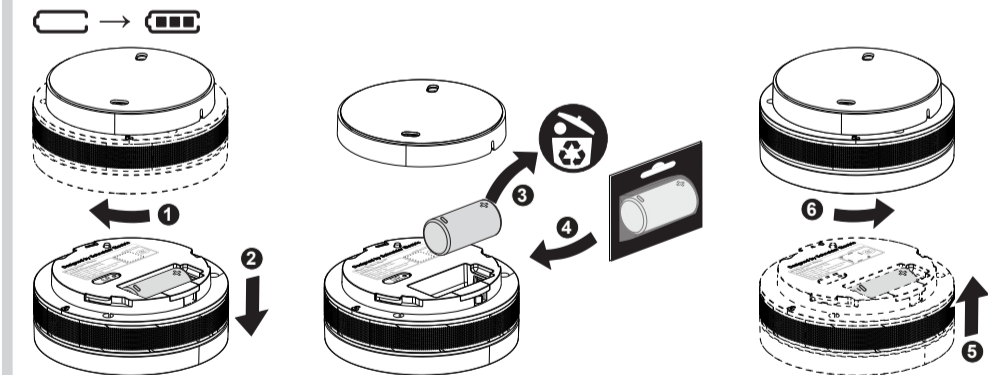
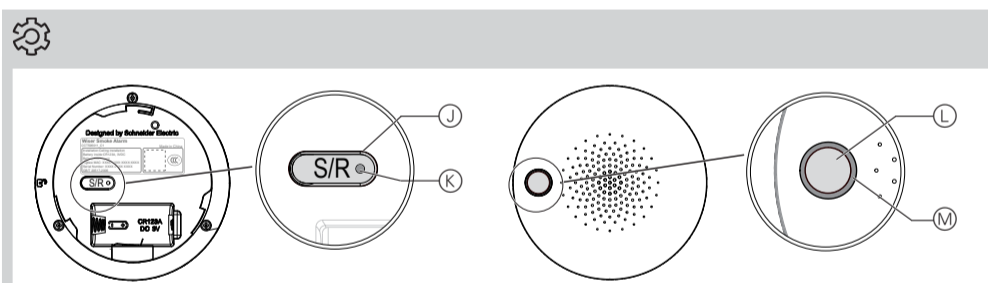
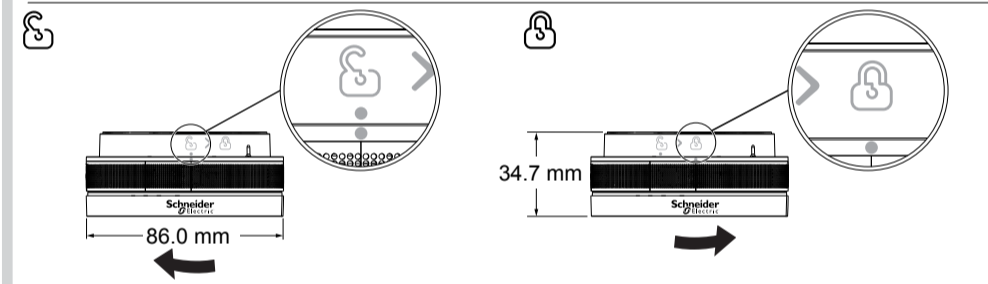
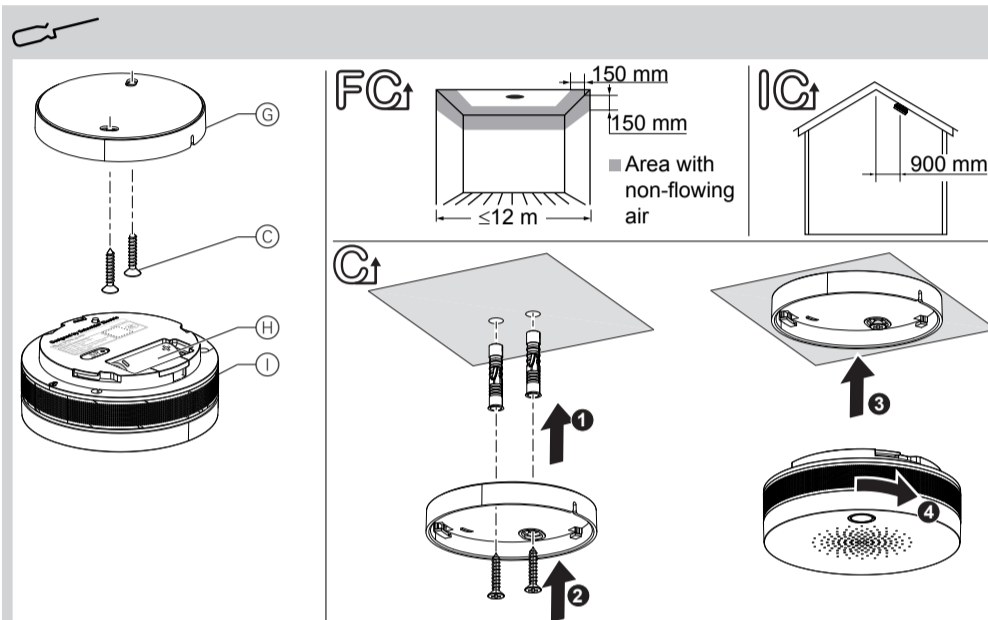
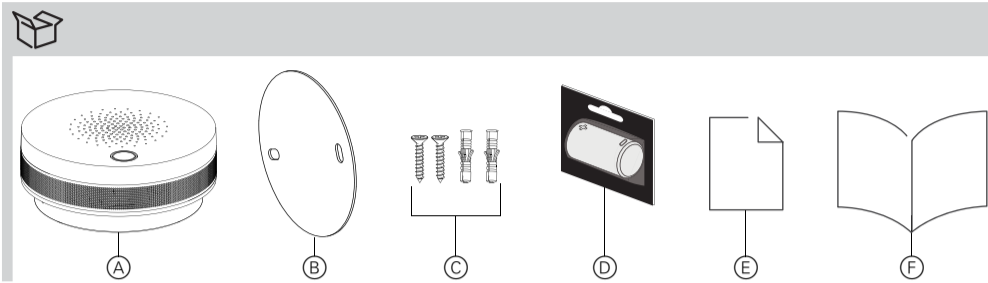


CCT596011_C1

Wiser



Works with Wiser Hub CCT501900. Refer to system user guide for more information: https://download.schneider-electric.com/files?p_Doc_Ref=MFR1569800



en **Wiser Smoke Detector**
CCT596011_C1

For your safety

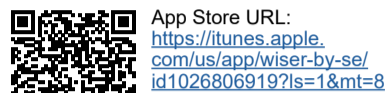
NOTICE

RISK OF DAMAGE TO DEVICE
Always operate the product in compliance with the specified technical data.
Failure to follow these instructions can result in equipment damage.

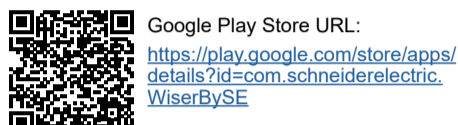
Refer to the system user guide for fire escape procedures.

Prerequisites

Scan the QR code to download the Wiser by SE app onto your smartphone to configure and control the Wiser devices.



App Store URL:
<https://itunes.apple.com/us/app/wiser-by-se/id1026806919?ls=1&mt=8>



Google Play Store URL:
<https://play.google.com/store/apps/details?id=com.schneiderelectric.WiserBySE>

Getting to know the product

The Wiser Smoke Detector (the *device*) uses a photoelectric sensor to detect smoke generated by fire. It triggers an alert by sounding a warning alarm and sends notifications through the Wiser by SE mobile app. The device is designed with advanced technology to provide stable operation, and a flame retardant enclosure in a low-profile case.

Features:

- High stability
- Low power consumption
- Battery operated (3 V)
- Equipped with self-test function
- Battery low voltage alert
- Balanced response to four types of fire.

For details, refer to the system user guide.

Package contents

- A Wiser Smoke Detector
- B Double sided adhesive pad
- C Screws:
Quantity 2 M3.5 × 20 mm
Quantity 2 wall plugs
- D Battery: CR123A/CR17335
- E Certificate
- F Installation instructions

Connection elements

- G Installation base
- H Battery chamber
- I Alarm

Choosing the installation location

The installation of the device is based on the type of ceiling.

Flat ceiling

Install the device at the center of the ceiling as heat, smoke, and fire-generated materials tend to spread after rising up the ceiling. Make sure there is a minimum spacing of 30 cm from the lighting fixtures, and 15 cm from walls and corners to the device. If installing in a hall longer than 12 m, install at both of ends of the hall.

Inclined ceiling

Make sure there is a minimum spacing of 90 cm horizontally between the higher end of the ceiling and the device (Refer to GB50116-98 for protection area).

- Make sure there is a minimum depth (20 mm) in the ceiling to install the device.
- It is recommended to install the device in residential houses, lounges, coffee houses, dance halls, hotels, restaurants, and apartments.
- Install the device in the center area of ceilings, and not at corners.
- Do not install the device in places where:
 - there is excessive dust, foam, or water vapour
 - erosion gas could be generated
 - normal smoke could be generated (garage or kitchen).
 - there is high temperature or humidity
 - wind speed exceeds 15 m/s.

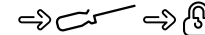
Mounting the device

Removing the module

Rotate the alarm anti-clockwise until it unlocks and then remove.

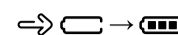
- Use the double sided adhesive pad to affix the installation base on the ceiling before securing it with M3.5 screws.
- Make sure that the plastic sleeve of the battery is removed before it is installed into the battery chamber of the device.

Reinstalling the alarm



To install, position the alarm on the installation base and rotate clockwise until it locks.

Replacing the batteries



NOTICE

PERFORMANCE DEGRADATION OR EQUIPMENT DAMAGE

- This device should be powered only by the battery model specified.
- Only lithium batteries should be used. Do not use rechargeable batteries.

Failure to follow these instructions can result in performance degradation or equipment damage.

Operating elements

- J S/R button
- K Programming indicator
- L Self-test/mute push button
- M LED indicator

For details, refer to the system user guide.

Setting the device

Commissioning the device

Short press (<1 s) the S/R button 3 times to connect to an available network.

Resetting the device

Short press (<1 s) the S/R button 3 times and then long press the S/R button once for >10 s to reset the device to factory default mode.

Upon successful device reset, all configuration data, user data, and network data is deleted.

For details, refer to the system user guide.

Behaviour of the LED indicator and alarm

The alarm status can be determined from the LED and alarm indication.

To activate the alarm mute feature, press self-test/mute push button. On activating alarm mute, the device sensitivity is lowered.

Status	LED	Alarm
Normal	One flash in red, every 53 s	-
Test	Rapid flash in red	Rapid 'di-di-di'
Alarm	Rapid flash in red	Rapid 'di-di-di'
Mute	One flash in red, every 10 s	-
Low voltage	One flash in red, every 53 s	One 'di' sound every 53 s (with LED flash)
Fault	Two flashes in yellow, every 53 s	Two 'di' sounds every 53 s (with LED flash)

- Alarm mute feature should be used only when there is no risk of fire.
- Do not try to block or prevent the device from sounding the alarm.

Operating the device

Testing the device

Perform the self-test at least once a month. Pay attention to the alarm signals during the operation.

To test the device, short press (<1 s) the self-test/mute push button and then release it, until the device is in alarm state.

- The device can only sound alarm signals. It cannot help extinguish a fire.

For details, refer to the behaviour of the LED indicator and alarm section and the system user guide.

CAUTION

EQUIPMENT DAMAGE

- Do not test with actual fire.
- Always maintain a clean environment around the device.
- Avoid proximity to materials such as paint, diluent, toxic fumes or gases.

Failure to follow these instructions can result in injury or equipment damage.

Behaviour of the programming indicator

Refer to the system user guide.

Maintenance of the device

Test the device using the self-test/mute push button once a month after the device is installed and is in operation. In case of faults, troubleshoot or refer to customer support hotline.

- Battery life is 2 to 3 years under ideal conditions (No fire inside the room, the ambient temperature and humidity range to be within the specified value) but may deteriorate due to harsh conditions (high temperature, high humidity, etc).
- During a low voltage warning, replace with battery of same model number. On successful replacement, perform the self-test to check for appropriate alarm signals.

- The device should be installed before being tested or used.

- Before installation, do not expose the device to extreme dust, temperature, humidity, or eroding materials.

- If the device is faulty, do not disassemble. Remove the battery and contact the Customer Support for troubleshooting.

- After a fire accident, it is recommended to replace battery.

NOTICE

EQUIPMENT MAINTENANCE INSTRUCTIONS

- Do not attempt to open the smoke detector yourself.
- There are no other user-serviceable parts inside.

Failure to follow these instructions can result in equipment damage.

For details, refer to the system user guide.

Troubleshooting

Issue	Primary Cause	Resolution
Power on immediately followed by alarm	Smoke detector tunnel is excessively polluted	Refer to customer support.
	Excess dust/water vapour inside the room	Remove any dust/water vapour from the device and then power on.
	Hardware circuit failure	Refer to customer support.
Power on immediately followed by short 'di-di' sound	Low powered battery	Replace battery with the same model number.
	Hardware circuit failure	Refer to customer support.
No/low alarm sound when the alarm is on	Low powered battery	Replace the battery with the same model number.
	Battery connection issue	Reinstall the battery. Make sure it aligns with the correct polarities.
No alarm signals after pressing the self-test/mute push button	Low powered battery	Replace battery with the same model number.
	Hardware circuit failure	Refer to customer support.

For details regarding device returns, contact Customer Support provided at the end of this document.

For details, refer to the system user guide.

Technical data

Alarm LED indicator	Red
Alarm sound pressure	> 80 dB (3 m from the device surface)
Battery	3 VDC, CR123A/CR17335
Battery life	Approximately > 1 year (battery life may vary according to usage type and environment)
Communication interface	2.4 GHz, RF connection (IEEE 802.15.4)
IP rating	IP41
Operating temperature	-10 °C to 50 °C
Operating humidity	≤ 95%
Product dimensions	Ø 86.0 mm × 34.7 mm
Standard	GB 20517-2006
Certification	CCC compliant
	China RoHS compliant

Trademarks

- Apple® and App Store® are brand names or registered trademarks of Apple Inc.
 - Android™ is a trademark of Google LLC.
- Other brands and registered trademarks are properties of their relevant owners.

Schneider Electric Asia Pacific Limited

11th Floor, Kerry Centre, 683 King's Road, Quarry Bay, Hong Kong

se.com/contact