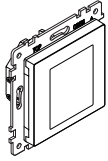


## KNX Multitouch Pro

Operating instructions



Art. no. MEG6215-0310

### Necessary accessories

- Complete the KNX Multitouch Pro with an System M frame.

### Accessories

- Dismantling protection art. no. MEG6270-0000
- Remote sensor for universal room temperature control unit with touch display art. no. MEG5775-0003

### Scope of delivery



KNX Multitouch Pro with bus connecting terminal



Retaining ring

### For your safety



#### DANGER

**Risk of serious damage to property and personal injury, e.g. from fire or electric shock, due to incorrect electrical installation.**

Safe electrical installation can only be ensured if the person in question can prove basic knowledge in the following areas:

- Connecting to installation networks
- Connecting several electrical devices
- Laying electric cables
- Connecting and establishing KNX networks

These skills and experience are normally only possessed by skilled professionals who are trained in the field of electrical installation technology. If these minimum requirements are not met or are disregarded in any way, you will be solely liable for any damage to property or personal injury.

## Getting to know the KNX Multitouch Pro

The KNX Multitouch Pro is a KNX control unit with which you can control up to 32 different room functions, such as switching or dimming lights, controlling blinds or calling up scenes. Moreover, it has an integrated room temperature control unit which supports different types of control.

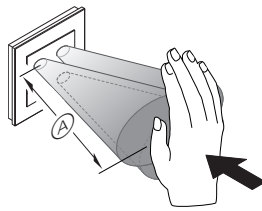
All functions are displayed on a touch screen and are called up using simple finger movements.

The KNX Multitouch Pro has an integrated bus coupler; its power is supplied via the KNX bus.

### ETS device functions

#### The proximity function

When the proximity function is active, the start screen is only visible when you approach within approx. 20 cm of the KNX Multitouch Pro. As soon as no further movement is detected towards the device, it switches back to standby after a certain time (0-600 s).



A Range approx. 20 cm



The approach movement is optimally detected when a hand is moved towards the device from the front. The range (A) may fluctuate somewhat due to local conditions (e.g. ambient brightness).

#### The gesture function

When the gesture function is switched on, the KNX Multitouch Pro can detect a hand movement and thus call up a function that you have defined. In this way, the light can be switched on by a gesture when you enter the room, for example.

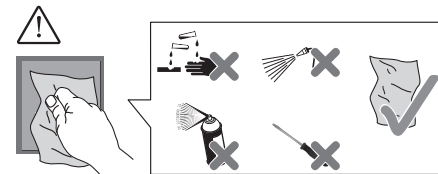
You can choose between 2 gestures that the device recognises:

- Gesture 1: Horizontal hand movement
- Gesture 2: Vertical hand movement

The gesture is detected at a distance of about 5 cm in front of the device (please refer to the information about the proximity function).

#### Cleaning mode

If you activate cleaning mode, the screen does not detect either touches or gestures for 30 s - 90 s.

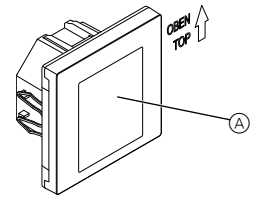


#### Additional functions

- Adjusting the background lighting
- Setting the screen saver
- Screen lock

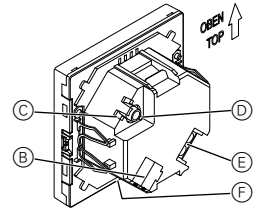
## Displays and operating elements

### The front



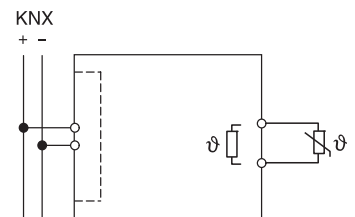
A Touch screen

### The rear



- B Bus connecting terminal and bus connection
- C Programming button
- D Programming LED
- E Remote sensor connecting terminal
- F Service interface

### Connections



### Selecting the installation site



#### Functioning error due to direct sunlight

Direct sunlight on the device can prevent proximity from being detected in certain cases.

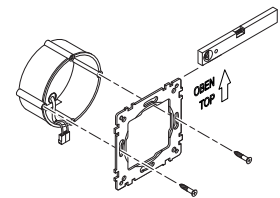
- Always place the device in areas with normal light conditions.

### Installing the KNX Multitouch Pro

#### Installing an individual device

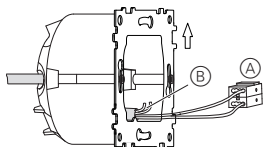
A frame is required for installation.

- 1 Install the retaining ring on the mounting box with the arrow pointing upwards.

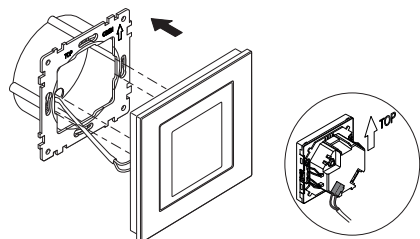


- 2 Bus connection (A):
  - Connect the red bus wire (+) to the red bus connecting terminal.
  - Connect the black bus wire (-) to the dark grey bus connecting terminal.

- 3 Insulate the screen and stability wire as well as white and yellow wires (B) and place them in the mounting box.



- 4 Optional: Connect remote sensor.
- 5 Place the device in the frame with the bus connection downwards.
- 6 Connect the bus connecting terminal to the bus connection.
- 7 Plug the device with frame onto the retaining ring and click into place.



### Installing a combination

Observe the following additional installation instructions when installing devices in combination with a 230 V connection (e.g. sockets).

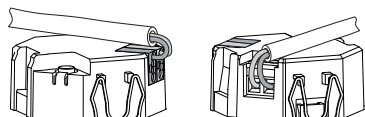
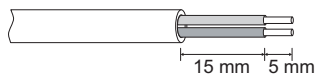


#### WARNING

**Risk of fatal injury from electric shock. The device can be damaged.**

Basic insulation to the retaining ring must always be ensured for SELV cables.

- Observe the following insulation stripping lengths and the instructions on laying cables.



If only single-wire insulation is available, you must restore basic insulation.

- Pull an insulation sleeve or the bus cable sheathing over the individual wires.

### Remote sensor: Installation instructions



Notes about installation:

- Select an installation site that allows the remote sensor to measure the temperature freely.
- Route the remote sensor in an empty tube as far as measurement input.
- Floor installation: Route the remote sensor in a sensor protection tube so that the remote sensor does not get damaged by tile cement or screed.
- The sensor line can be extended with a 2-core cable for mains voltage (1.5 mm<sup>2</sup>) or with a bell wire (<10 m).
- Screw tightening torque: max. 0.4 Nm



Observe the instructions on the insulation stripping length and on laying cables in the chapter "Installing a combination".

### Commissioning the KNX Multitouch Pro

- 1 Press the programming button.  
The programming-LED lights up.
- 2 Load the physical address and application into the device from the ETS.

The programming LED goes out.  
The device enters configuration mode for a few seconds. During this time, a message appears on the display asking you to wait.



The proximity sensor is adapted to the specific circumstances in configuration mode. To achieve an optimum result, the device is not allowed to register any movements during this period. Otherwise, the configuration will repeatedly start from the beginning again, or the result will be falsified.

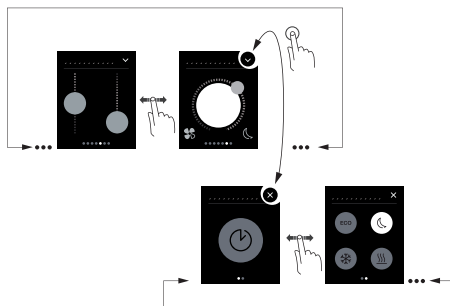
### The user interface in brief

As soon as the KNX Multitouch Pro is ready to operate, the start screen you have chosen will be displayed. This is for example the main function screen of the room temperature control unit with information on temperature and operating mode.



Swipe to the right or left to access a further 7 main function screens at most, and the General Settings.

Each main function screen has access to 3 sub function screens at most on which you can set the slat position or the timer switch, for example.



How to navigate through the menu

In the General Settings, you define general settings for the screen saver, the proximity function or the gesture function.

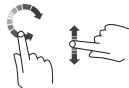
#### How to operate



Swipe right/left: Switch between the function screens



Tap: Jump between the main function screen and sub function screen, call up functions, set values



Swipe circular, swipe up/down: Move through value ranges, call up values.

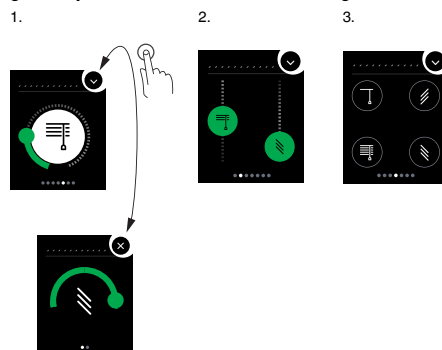


Tap and hold: Call up special functions such as saving scenes or moving blinds.

### View of the room functions

You can display your room functions in different designs.

In the following example, the "Move blind and adjust slats gradually" function is shown in the 3 designs.



### Menu instructions

The complete menu instructions can be downloaded here.



[www.merten.com](http://www.merten.com)

### Customer-specific adaptations

If you want to adjust colours and symbols on the user interface, please contact your Schneider Electric Customer Care Center.

[www.schneider-electric.com](http://www.schneider-electric.com)

### Technical data

Power supply from KNX: DC 24 V, approx. 28 mA

Display elements: Programming LED

Operating elements: Touch screen, programming button

Screen size:  5.1 cm (2")

Ambient operating temperature: -5°C to +45°C

Max. humidity: 93% relative humidity, no condensation

Environment: The device is designed for use at elevations up to 2000 m above sea level.

IP protection rating: IP 20

KNX connection: Two 1 mm pins for bus connecting terminal

Remote sensor connecting terminal: 2x 0.14 mm<sup>2</sup> - 1.5 mm<sup>2</sup>



Give these operating instructions to your customer to keep.

### Schneider Electric GmbH c/o Merten

Gothaer Straße 29, 40880 Ratingen

[www.merten.com](http://www.merten.com)

[www.merten-austria.at](http://www.merten-austria.at)

#### Customer care centre:

Phone: +49 2102 - 404 6000