

KNX Multitouch Pro

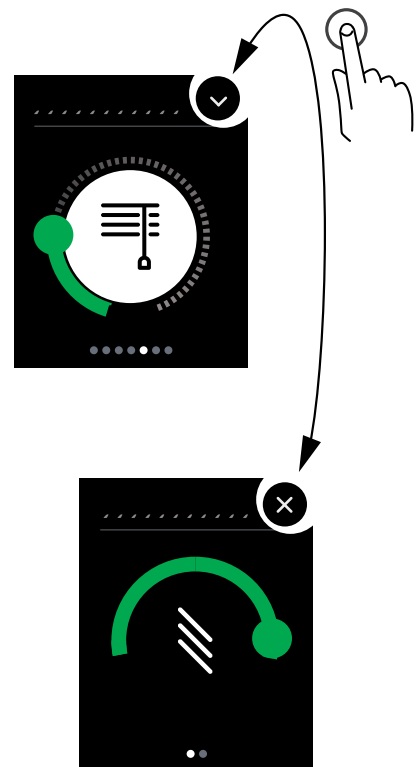
Menu of the KNX Multitouch Pro

User manual

This document describes how to operate the user interface of the KNX Multitouch Pro.

MEG6215-0310 | MEG6215-5910

08/2016



Legal information

The Schneider Electric brand and all registered trademarks of Schneider Electric Industries SAS referred to in this manual are the sole property of Schneider Electric SA and its subsidiaries. They may not be used without the written approval of the owner. This manual and all its content are in accordance with the law on trademarks. You agree not to duplicate the manual, in whole or in part, on media of any kind, without the written approval of Schneider Electric, other than for personal, non-commercial use as defined by the code of law. Furthermore, you agree not to create any hyperlinks to this manual or its contents. Schneider Electric does not grant the right or permission to use the manual or its content for personal and non-commercial use, with the sole exception of the non-exclusive right to view the current version of the manual and its content, at the viewer's own risk. All other rights reserved. Electrical equipment must be installed, operated, maintained and repaired by qualified personnel only. Schneider Electric accepts no liability for the consequences of using this material.

Trademarks

Other brands and registered trademarks are the property of the relevant owner.

Notes

Read through the following instructions carefully and familiarise yourself with the device prior to operation.

NOTE

NOTE provides information about procedures that do not present any risk of material damage.

Further information



You will find additional information here to make your work easier.

Depictions in this document

Style and text features used

Text features used



Depiction	Meaning
Operation section	Cross-references
	Symbol for operation in the user interface (Symbols --> 26)
	Symbol in the user interface (Symbols --> 26)

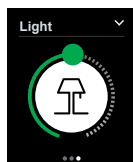
Table of contents

1	Familiarising yourself with the user interface	5
2	How to operate the menu	7
2.1	Starting operation	7
2.2	Navigation	8
2.3	How to activate functions	9
	Control dial design	10
	Vertical design	11
3	Function examples	14
3.1	How to switch and dim the lights	14
3.2	How to move blinds and adjust slats	15
3.3	How to adjust the room temperature control unit	16
	Adjusting the room temperature in heating mode	17
	Adjusting the room temperature in cooling mode	18
	Jumping from the room function to the sub functions	19
	Activating comfort, ECO or night mode	20
	Activating comfort mode on a timer	21
	Activating protection mode	22
	Adjusting the speed of the fan	23
3.4	How to operate scenes	24
	Loading scenes	24
	Saving scenes	25
4	Symbols	26
4.1	Operation and navigation	26
4.2	Settings	26
4.3	Lighting and switching	27
4.4	Blind	27
4.5	Room temperature control unit	28
4.6	General	28
4.7	Scenes	29
4.8	Information	29
4.9	Service messages	30

1 Familiarising yourself with the user interface

This section provides an overview of the screen pages of the KNX Multitouch Pro. You can use the screen pages to activate room functions, read information and adjust general settings. You can navigate from room function to room function, and from each room function to its sub functions. You can activate the functions using the service buttons and controllers.

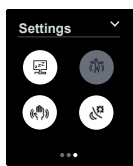
Room functions



Examples of room functions including switching lights on and off, dimming, controlling blinds, altering the room temperature and activating scenes. Your installation technician will have installed the correct room functions to suit your installation and requirements. You can use your KNX Multitouch Pro to control up to 32 room functions (up to 4 on each screen page).

Depending on the scope of functions available to you, you may be able to navigate to further sub function pages from a room function. You can then use these pages for actions such as adjusting the slats of a blind or night reduction for the room temperature control unit.

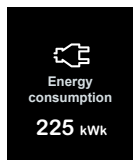
Settings



There is also a screen page for altering your general settings. This allows you to activate and deactivate functions such as the gesture function, the standby function and the screen saver, for example.

Other settings, such as the brightness and the time after which the screen saver or standby mode will be activated, can be altered on the sub function pages.

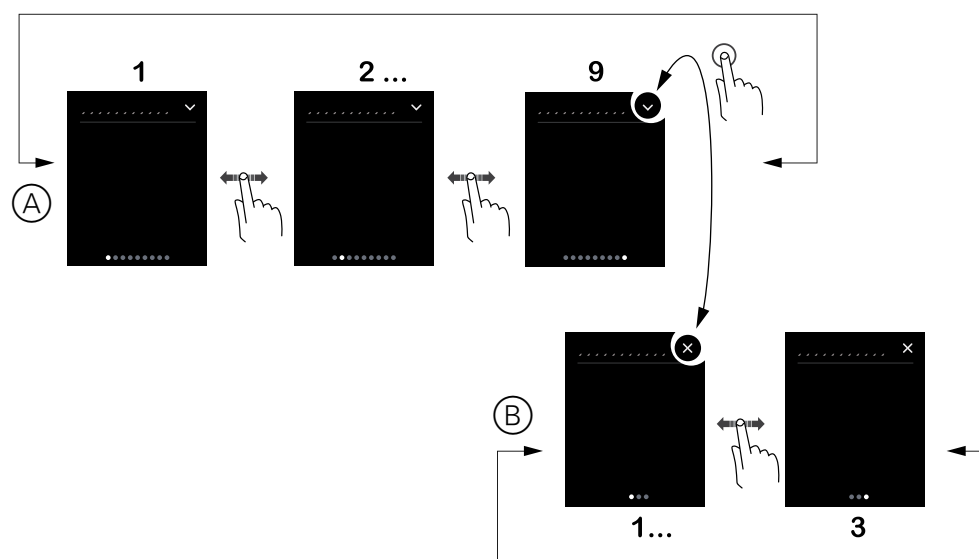
Messages and information



If you wish, you can set the system to display messages such as "Strong wind" or "Person detected" on a screen page.

The outdoor and indoor temperature, current energy consumption and other information can also be displayed. These values will appear on a screen page.

Navigation overview



Ⓐ Main functions

Ⓑ Sub functions

Gesture function



When the gesture function is switched on, the KNX Multitouch Pro can detect a hand movement and respond by activating a function that you have defined. In this way, the light can be switched on by a gesture when you enter the room, for example. The gesture is detected at a distance of about 10 cm in front of the device. The system can detect both horizontal and vertical movements, as well as the direction of movement. This means that you can set an upwards movement to switch the light on and a downwards movement to switch it off, for example. If your system is configured accordingly, you can activate and deactivate the gesture function on the settings screen page.

2 How to operate the menu

In this section, you will learn how to activate the screen, navigate to the screen pages and activate all the functions.

2.1 Starting operation

You can choose whether to keep the screen switched on at all times or set it to only switch on when touched or approached. When the display is in standby mode, the backlight will be switched off or a screen saver will be running on it.

Proximity function



If you come within 20 cm of the device, the main screen or the last used screen will appear.

Touching the screen



When you touch the screen, the main screen or the last used screen will appear.

Main screen

When the system is running, the main screen appears after a user-defined period of time, or after a device restart.

Screen lock



If a screen lock has been set up, you can lock the device. You can then unlock the device using a 4-figure code.

Activating the screen saver and switching off the backlight



The time until the screen saver is activated and the backlight is switched off can each be set to any value between 1 and 600 seconds. This time is reset each time one of the following events occurs:

- Proximity
- Gesture
- Action on the screen

2.2 Navigation

In this section, you will learn how to navigate to all the screen pages. Navigation is performed using 2 finger movements.

Swiping right/left



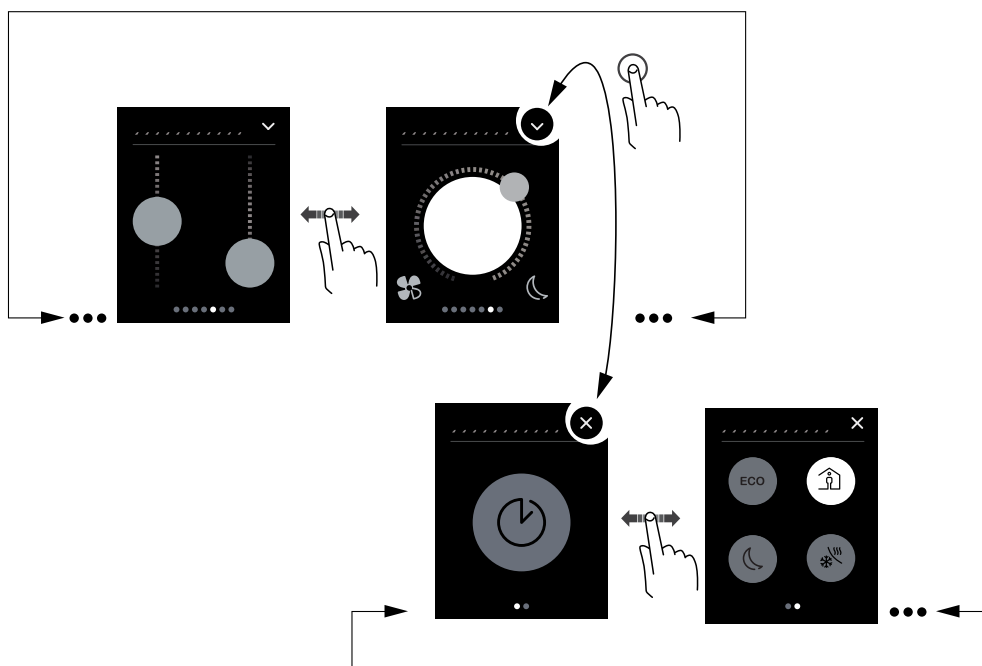
Go to the next screen page and back.

Tapping



Jump to the next sub function page and back.

Navigation overview



2.3 How to activate functions

In this section, you will learn how to activate the functions on the screen pages. You can activate the functions by either tapping or swiping.

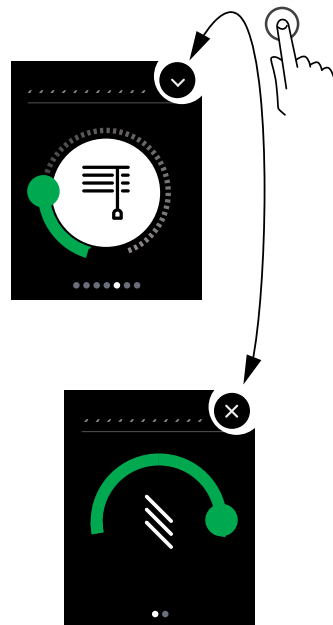
How functions are displayed

Functions are displayed in one of three ways:

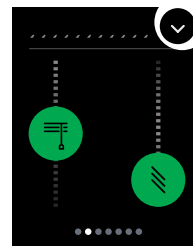
- Control dial design
- Vertical design
- Button design

The blind function is shown in this example. With the control dial design, you can adjust the slats on a sub function page. With the vertical design, both functions are on one screen. The button design, allows you to operate up to 4 blinds, depending on your configuration.

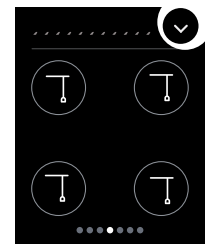
Control dial design



Vertical design



Button design



Which movements activate which functions?

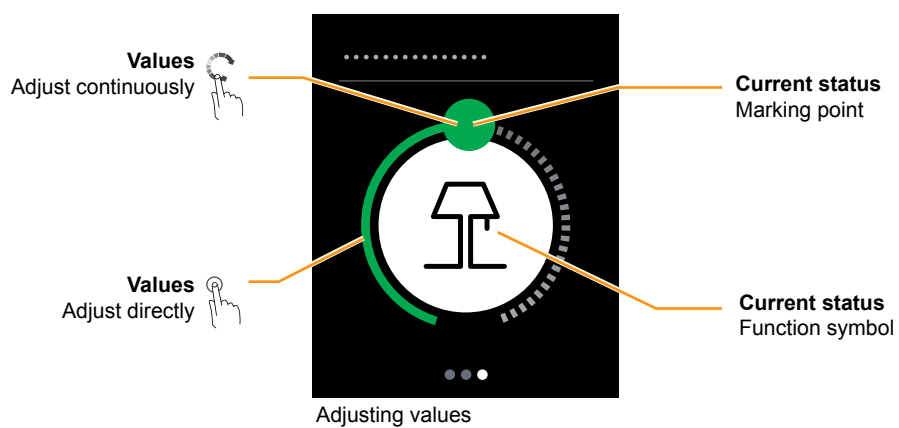
You can activate the functions by either tapping or swiping.

	Movement	Functions
	Tapping	<ul style="list-style-type: none"> – Activate – Activate and deactivate – Retrieve values directly – Change values incrementally
	Tap and hold	<ul style="list-style-type: none"> – Special action, e.g. move blind when held down – Activates the second function, e.g. save values
	Swipe up/down	Change values continuously
	Swipe circular	Change values continuously

Control dial design



How to operate a control dial

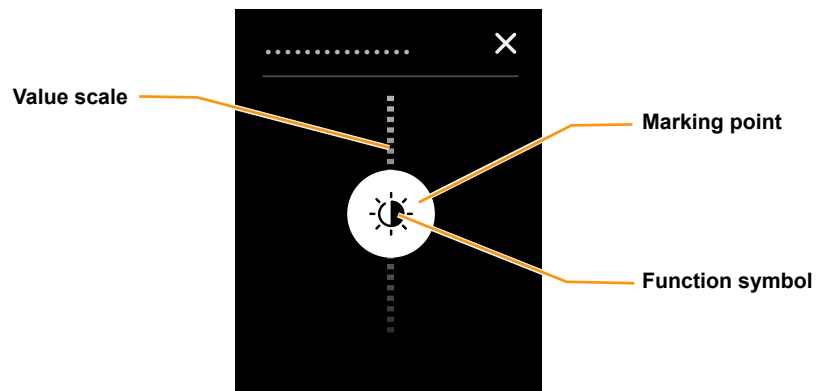


Example: dimmer

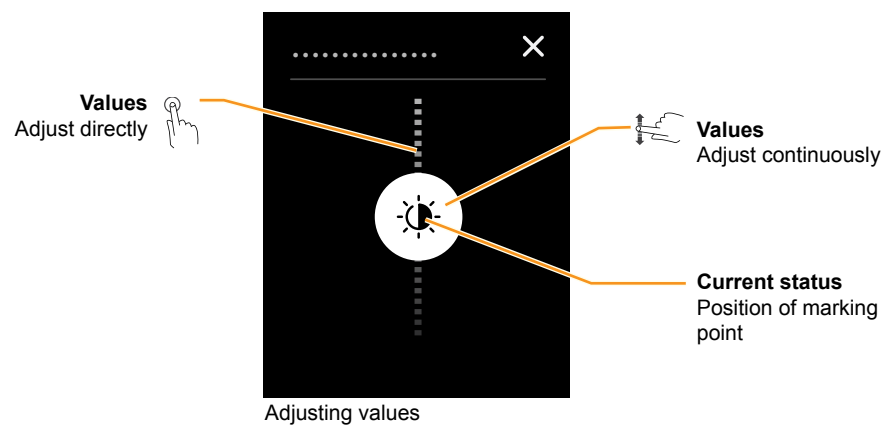


Function symbol for lighting

Vertical design



How to operate a vertical control

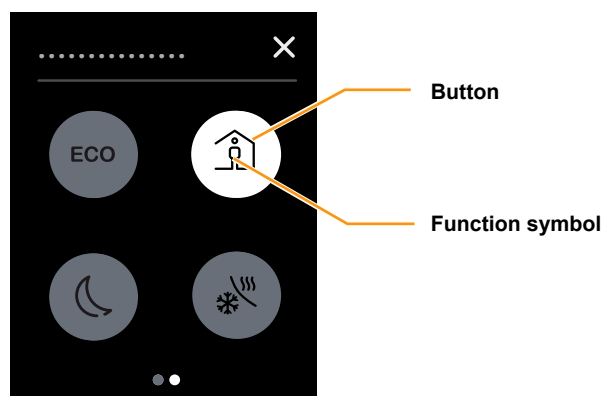


Example: adjusting brightness

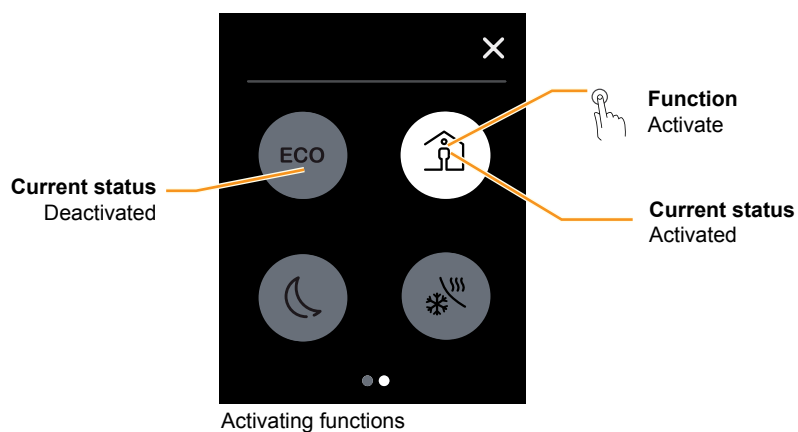


The marking point indicates the selected brightness on the value scale.

Activation buttons



How to activate a function

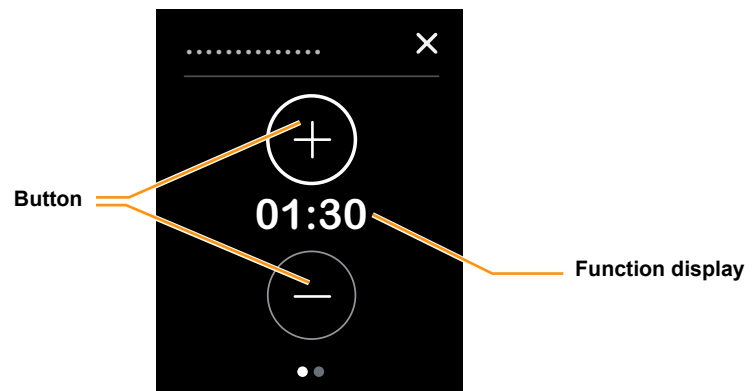


Example: comfort mode

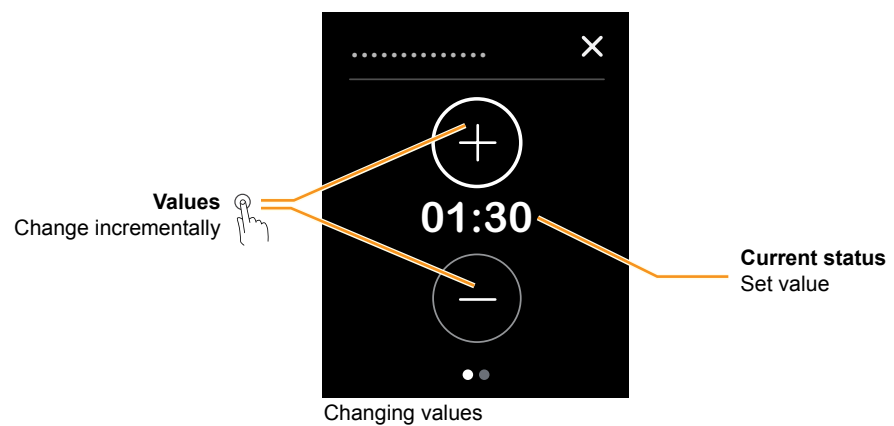
White service button = comfort mode activated

Grey service button = comfort mode deactivated

Buttons for incremental adjustment in the vertical design



How to change values incrementally



Example: duration of comfort mode
01:30 The set duration is shown.

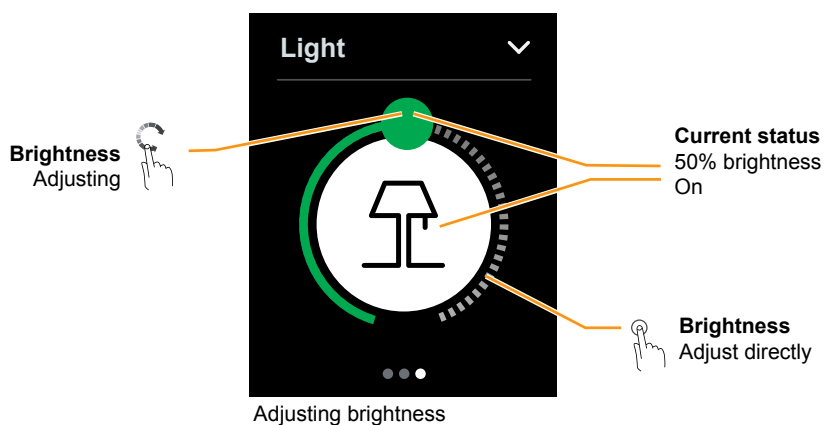
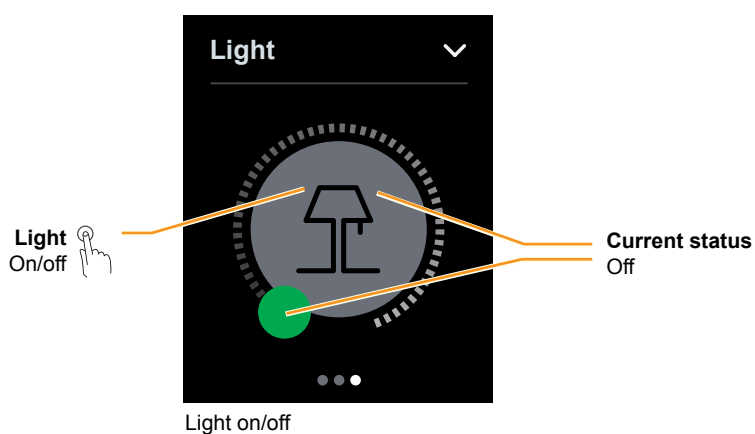
3 Function examples

This chapter shows how to operate the device for a few typical applications. These instructions are intended solely as examples. Your installation technician will have installed the correct room functions to suit your installation and requirements.

3.1 How to switch and dim the lights



Here, you will see how to switch and dim on the Light room function page. In this example, a control dial design has been selected.



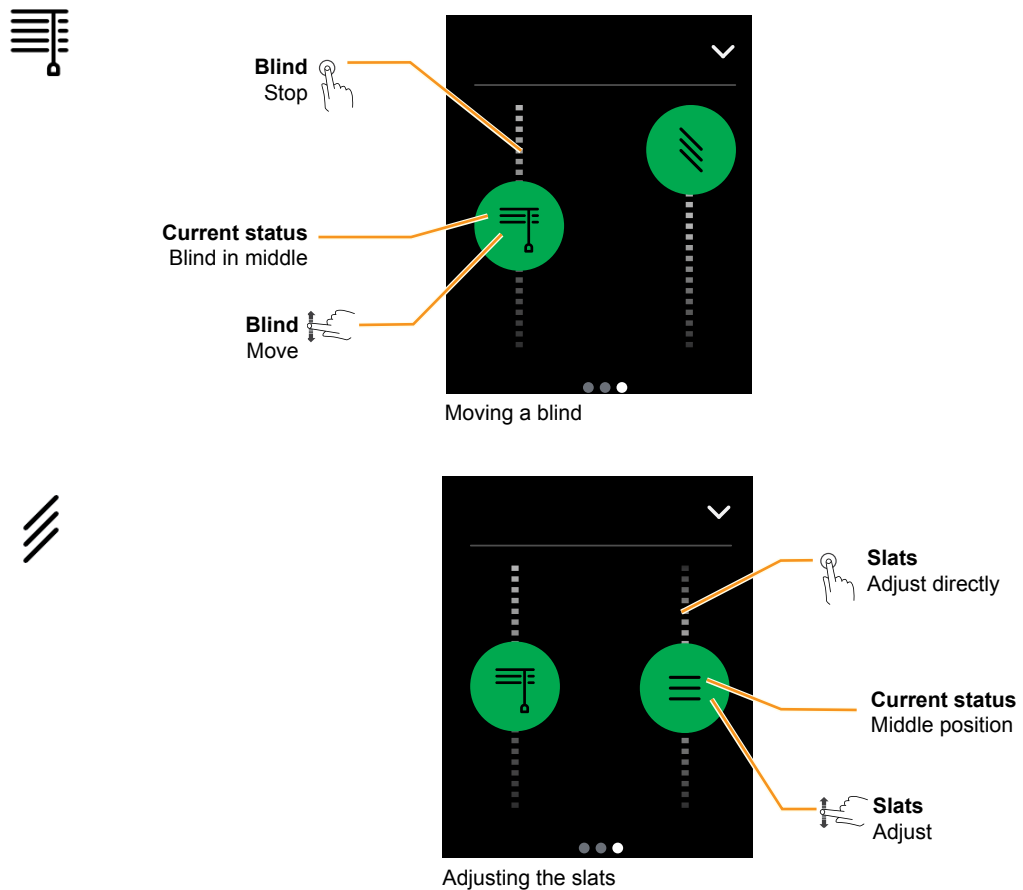
Dimming speed



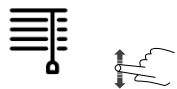
You can follow the dimming result directly as it happens in front of you. To do this, adapt your swiping to the speed of the dimmer.

3.2 How to move blinds and adjust slats

In this example, a vertical design has been selected. Here, you can raise or lower the blind and adjust the slats on a room function page.

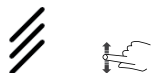


Blind moving time



You can set the desired position straight away. The blind will generally reach this position a little later. Depending on its speed and the distance it needs to travel, a blind may take several minutes to complete the required movement.

Slats



You can follow the adjustment of the slats live. To do this, adapt your swiping to the movement of the slats.

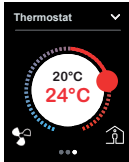


You can set blinds with different angles of opening. The symbol does not reflect the actual angle at which the slats of your blind are open.

3.3 How to adjust the room temperature control unit

Your installation will have set up your system for heating, cooling or both. The following examples show how to adjust your room temperature control unit. The examples are shown with the control dial design.

Setting the desired current temperature



The room temperature control unit compares the current room temperature with the desired (setpoint) temperature and heats and cools the room accordingly.

You can alter the setpoint temperature within a pre-defined range:

[Adjusting the room temperature in heating mode --> 17](#)

[Adjusting the room temperature in cooling mode --> 18](#)



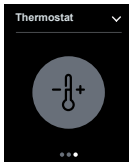
There are operating modes with different setpoints to suit room usage and different times of day. For example, the heating temperature can be set to 21°C for comfort mode and 17°C for night mode.

You can switch between different operating modes:

[Activating comfort, ECO or night mode --> 20](#)

[Activating comfort mode on a timer --> 21](#)

Protection mode



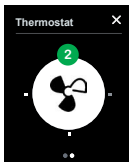
You can switch off the heating and cooling for the room using a protection function.

In heating mode, activate the frost protection. The heating is switched off. If the temperature drops significantly (e.g. to below 7°C), the heating will switch on again.

In cooling mode, activate the heat protection. The cooling is switched off. If the temperature increases significantly (e.g. to above 35°C), the cooling will switch on again.

[Activating protection mode --> 22](#)

Fan control



When fan coil units are in use, the speed of the fan changes. The speed depends on the control system, and is set automatically. If necessary, you can alter the speed:

[Adjusting the speed of the fan --> 23](#)

Navigation

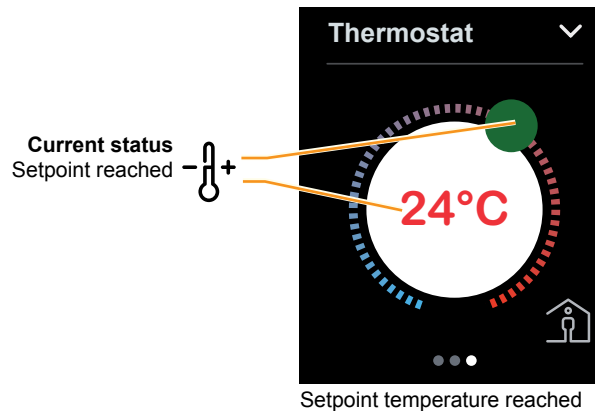
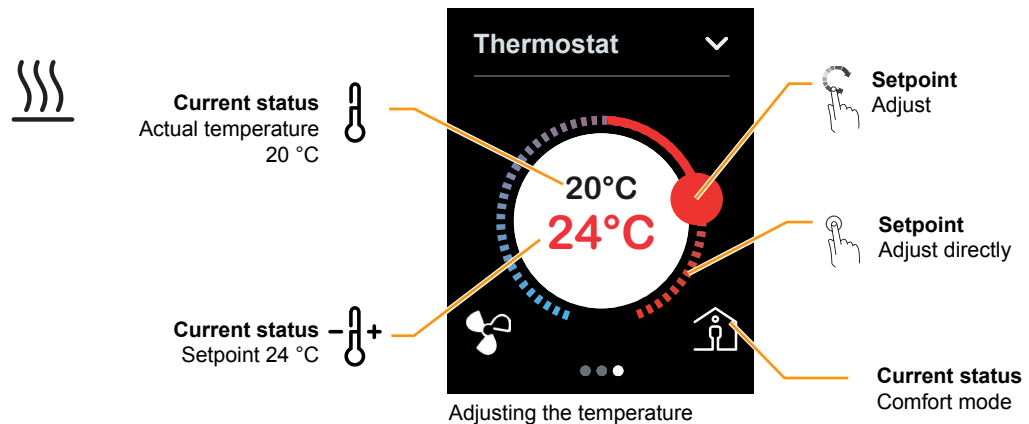
You can adjust the room temperature control unit on the room function page and the sub function pages:

[Jumping from the room function to the sub functions --> 19](#)

Adjusting the room temperature in heating mode

The room temperature control unit compares the current (actual) room temperature with the desired (setpoint) temperature. If necessary, you can alter the setpoint temperature.

In heating mode, the setpoint temperature is shown in red.



Setting the setpoint temperature

You can alter the setpoint temperature within a pre-defined range (e.g. +/-5°C). Your installation technician will set this range for you.

You will usually want to use comfort mode if you are going to be in the room for a longer period of time.

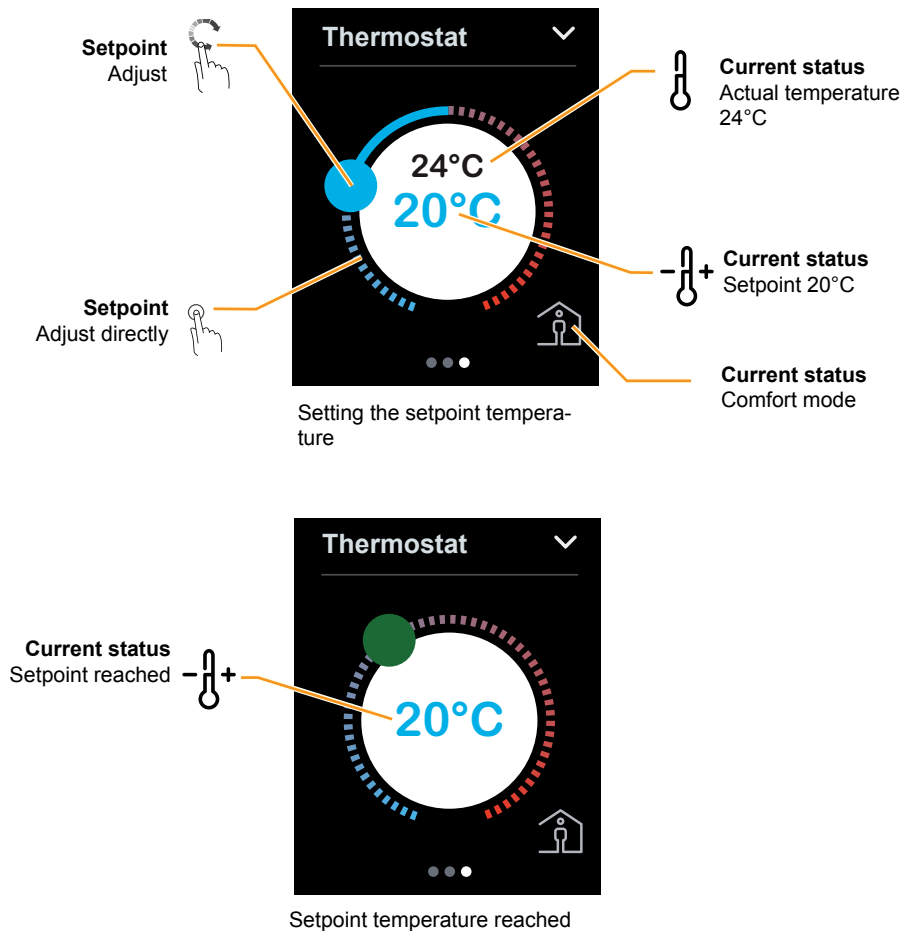
You can also change the setpoint by activating a different operating mode ([Activating comfort, ECO or night mode --> 20](#)).



Adjusting the room temperature in cooling mode

The room temperature control unit compares the current (actual) room temperature with the desired (setpoint) temperature. If necessary, you can alter the setpoint temperature.

In cooling mode, the setpoint temperature is shown in blue.



Setting the setpoint temperature

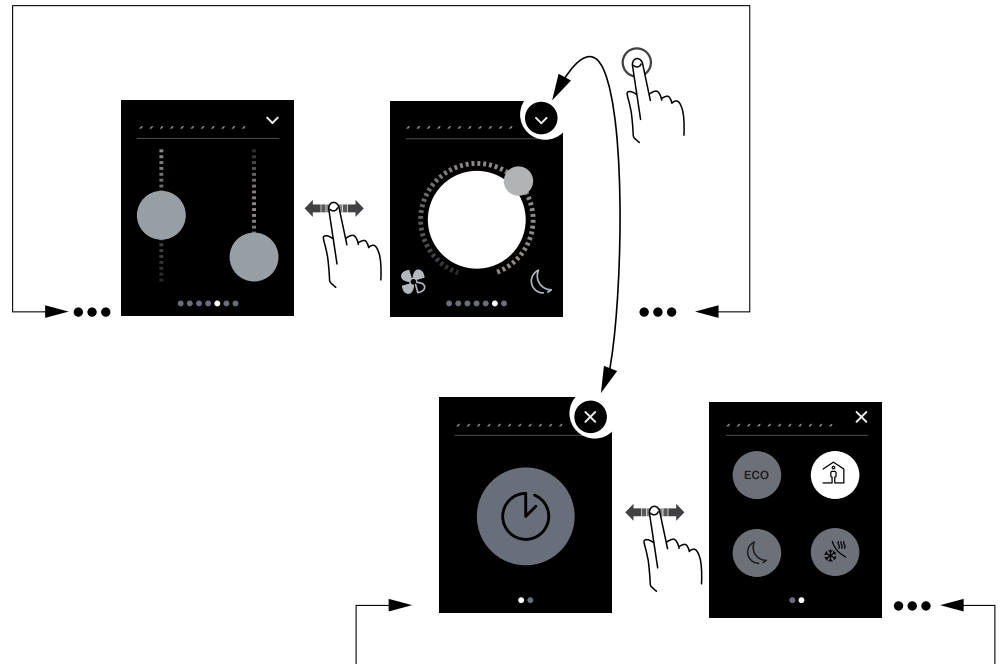
You can alter the setpoint temperature within a pre-defined range (e.g. $\pm 5^{\circ}\text{C}$). Your installation technician will set this range for you.

You will usually want to use comfort mode if you are going to be in the room for a longer period of time.

You can also change the setpoint by activating a different operating mode ([Activating comfort, ECO or night mode --> 20](#)).

Jumping from the room function to the sub functions

You can access other sub function pages from the room function page for the room temperature control unit. These allow you to adjust the time limit on the comfort mode and select operating modes, for example.



Swiping right/left

Go to the next screen page and back



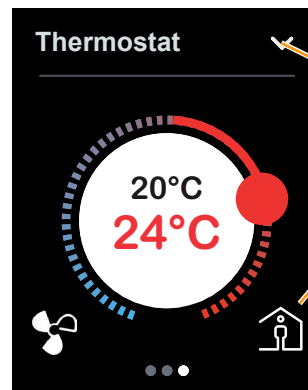
Tapping

Jump to the next sub function page and back

Activating comfort, ECO or night mode

You can activate comfort, ECO or night mode if you want to adjust the room temperature to the current room usage.

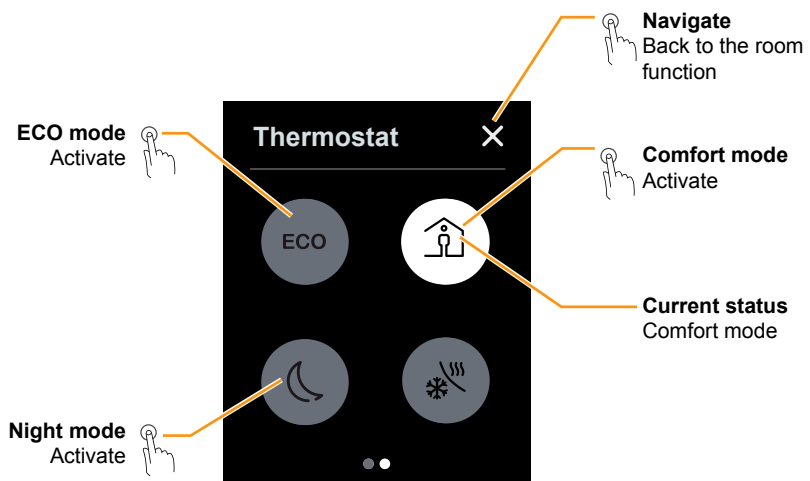
On the sub function page, you can choose night mode, ECO mode or comfort mode.



Comfort and ECO mode

Navigate
To the sub functions

Current status
Comfort mode



Activating comfort, ECO or night mode

Navigate
Back to the room function

Comfort mode
Activate

Current status
Comfort mode

ECO mode
Activate

Night mode
Activate



Activating comfort, ECO or night mode

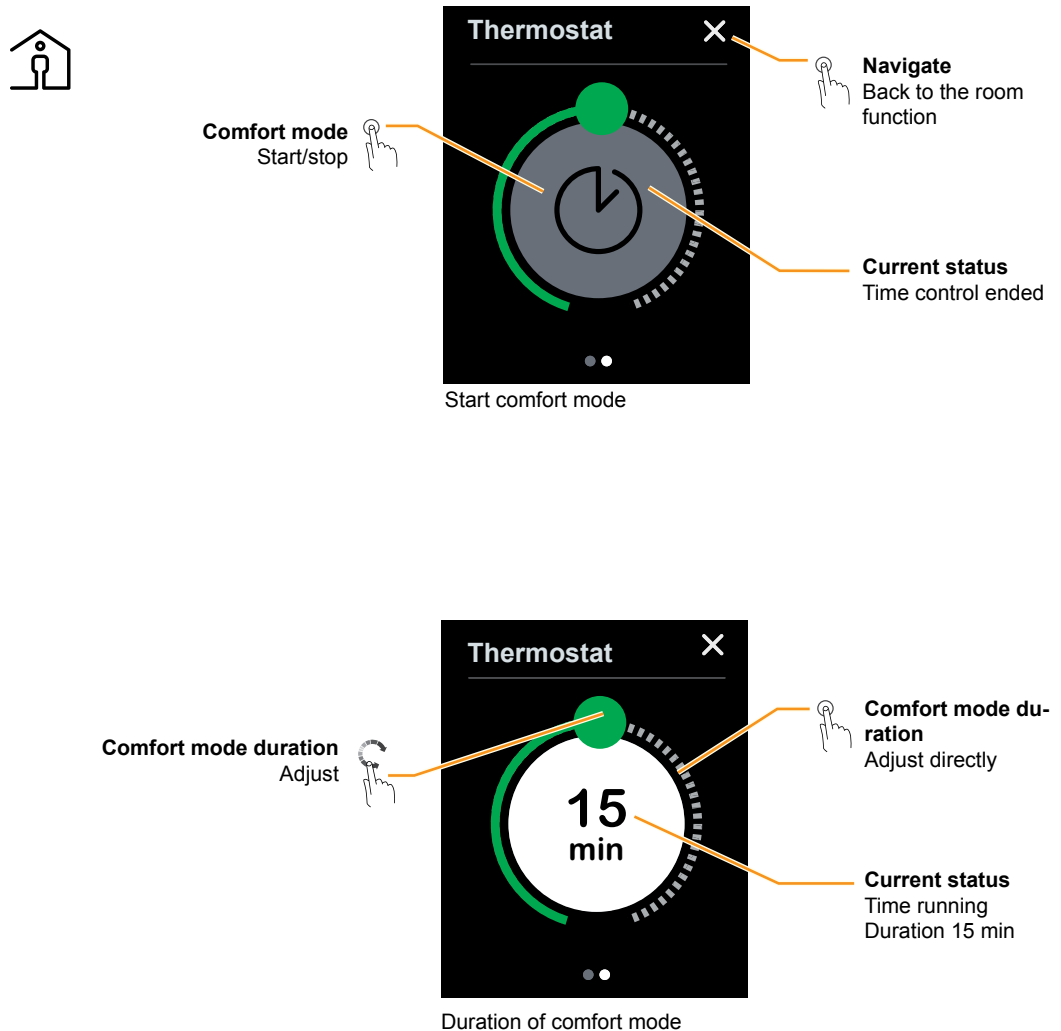
When you are in a room, you will generally want to keep the system set to comfort mode. You can also adjust the setpoint using the control dial ([Adjusting the room temperature in heating mode --> 17](#)).

In heating mode, the temperature is reduced by 2°C, for example.

In heating mode, the temperature is reduced by 4°C, for example.

Activating comfort mode on a timer

This example shows you how to activate comfort mode for a limited period of time. You can switch to comfort mode from night mode or ECO mode.



Comfort mode with timer

You are in the room for longer than usual. If night mode is already activated, for example, you can activate comfort mode. Night mode will be activated automatically when the set time period has elapsed. This helps you to save energy. You can also switch to another operating mode before the time elapses.

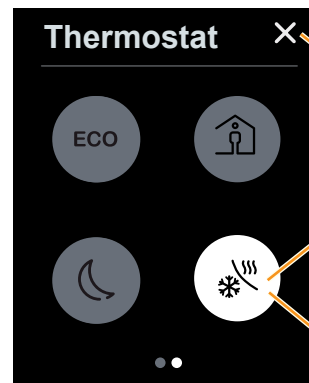


Activating protection mode

This example shows you how to activate and deactivate protection mode.

In heating mode, activate the frost protection. The heating is switched off. If the temperature drops significantly (e.g. to below 7°C), the heating will switch on again.

In cooling mode, activate the heat protection. The cooling is switched off. If the temperature increases significantly (e.g. to above 35°C), the cooling will switch on again.

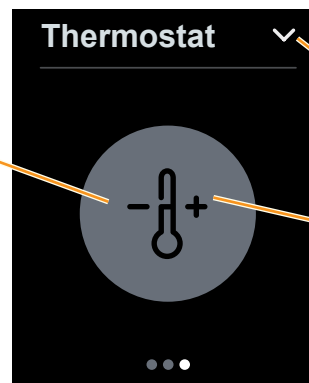


Navigate
Back to the room function

Protection mode
Activate/deactivate

Current status
Protection mode

Activating and deactivating protection mode



Navigate
To the sub functions

Current status
Protection mode

Protection mode
Activate/deactivate

Protection mode



Frost/heat protection



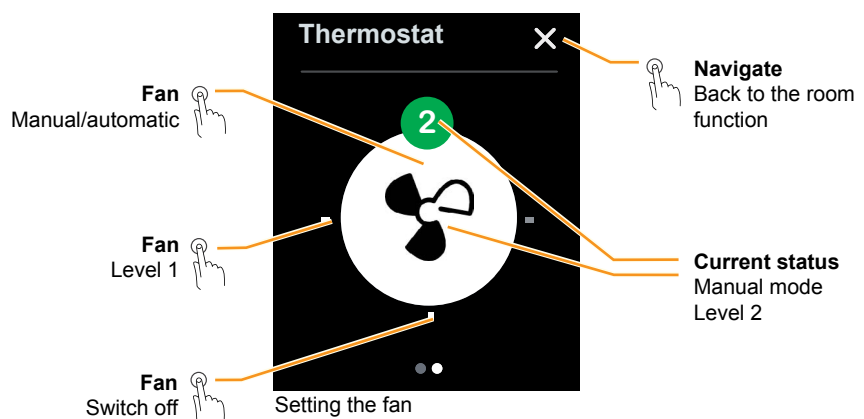
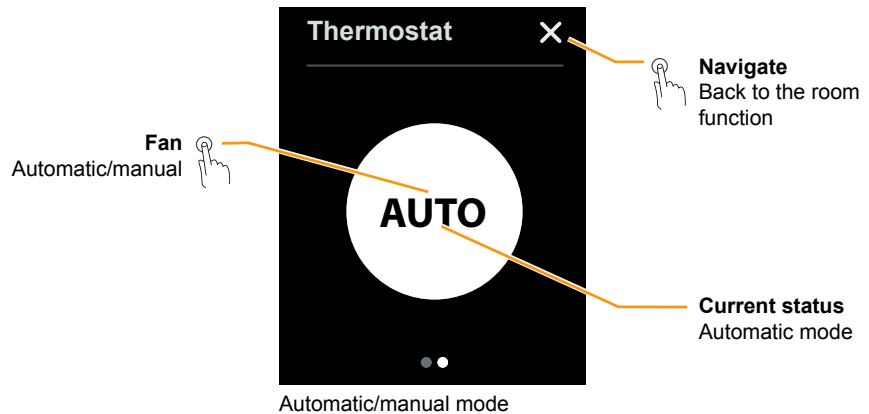
Your installation technician will set the frost protection setpoint for you. A setpoint of 7°C will usually ensure that the water in the pipes cannot freeze. In some cases, however, the individual radiator may be too small. As such, we recommend closing the windows when you are not in the room and, in case of frost, only opening the windows to air out the room.

Your installation technician will set the heat protection setpoint for you (e.g. 35°C).

Your installation technician can set the frost/heat protection to come on automatically when a window is opened, for example. In such cases, the protection mode will not be deactivated automatically until the window is closed again.

Adjusting the speed of the fan

This example shows you how to adjust the fan level or switch to automatic mode. In manual mode, you can adjust the speed or switch the fan off. In automatic mode, the speed of the fan depends on the room temperature control unit.



Fan speed



Depending on which fan is installed in your system, it may take a while for it to reach the selected power level.

3.4 How to operate scenes

The Scenes room function allows you to load several functions simultaneously at the push of a service button. For example, you can dim several lights at once while also altering the room temperature.

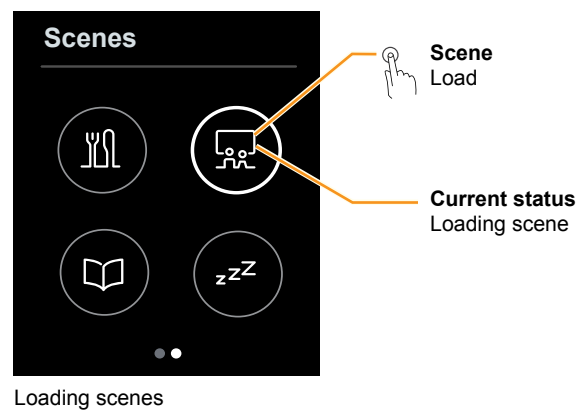
The scenes are designed to suit the different ways the room can be used. For example, the "Video" scene switches off the lamps or dims them to minimum brightness, while the "Dinner" scene makes the lights above the dining table brighter.

If your system is configured accordingly, you can also change and save the settings for a scene ([Saving scenes --> 25](#)). Please ask your installation technician to find out which saving concept has been set up for you.




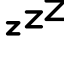
Loading scenes

In this example, we will load four different scenes. Each scene adjusts the lighting and the room temperature control unit.

The scene button lights up when a scene is being loaded. Once the scene is loaded, it turns grey again.



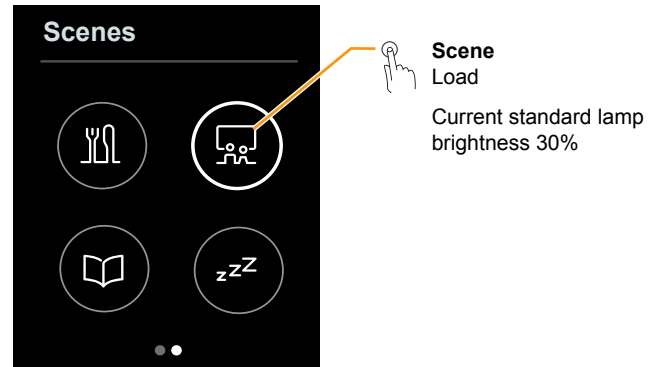
Example

				
Ceiling lamp	On	Off	OFF	OFF
Standard lamp	60%	30%	100%	0%
Room temperature	21°C Comfort	21°C Comfort	21°C Comfort	17°C Night

Instead of the symbols, your installation technician can also configure your buttons so that they are labelled by name.

Saving scenes

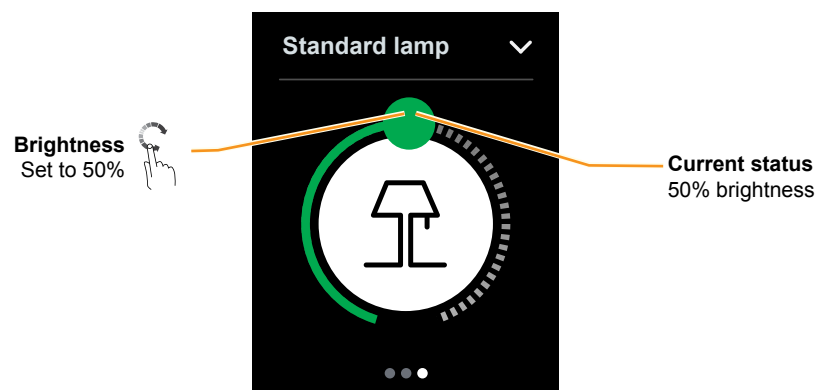
If your system is configured accordingly, you can change and save the settings for a scene. This example shows you how to alter the brightness of a standard lamp from 30% to 50%. You can then save this setting for the Video scene.



① Load scene



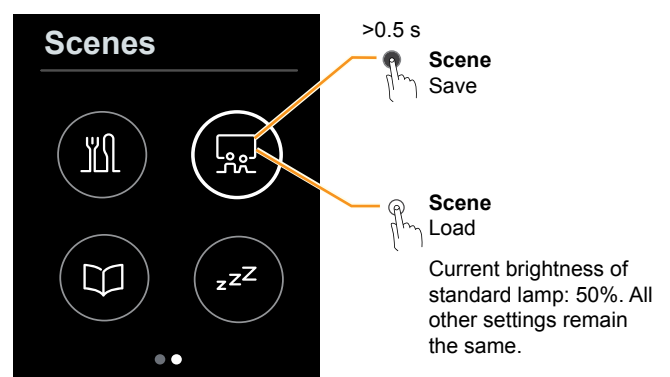
② Navigate to light



③ Set brightness to 50%



④ Navigate to the scenes










⑤ Save scene

⑥ Load scene










4 Symbols

This section shows the symbols that may appear on the screen pages of the KNX Multitouch Pro. The lists are arranged by function.

4.1 Operation and navigation

	Tapping	Activating functions
	Tap and hold	Activating the 2nd function (e.g. save settings) Special action (e.g. move blind when held down)
	Swipe up/down	Change values continuously using a slider
	Swipe circular	Change values continuously using a control dial
	Swiping right/left	Go to the next screen page and back
	Load sub function	Switch from the main level to a sub function
	Return to main level	Back to room function, information or setting

4.2 Settings

	Standby function / Always On function	Standby when approaching or touching the screen / Always On without standby
	Gesture function	Activates a function (e.g. switch on light)
	Screen saver	Page with information or saved images
	Time for screen saver	Start and adjust time until the screen saver comes on
	Day/night mode	Brightness in day/night mode
	Brightness	Screen backlight
	Function on/off	Start and adjust time until the screen is switched off
	Device is locked	Enter 4-figure code to unlock
	Device is unlocked	The device can be locked

4.3 Lighting and switching



Table/standard lamp



Ceiling lamp



Spotlight



Incandescent lamp



Incandescent lamp with spotlight function

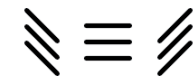


Brightness

4.4 Blind



Blind position



Slats position



Blind up



Blind down


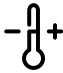










Turn slats down










Turn slats up










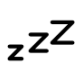




4.5 Room temperature control unit

	Actual temperature	Currently measured temperature
	Setpoint temperature	Required room temperature
	Heating mode	Current control type
	Cooling mode	Current control type
	Comfort mode	e.g. 21°C in heating mode
	ECO mode	e.g. 19°C in heating mode
	Night mode	e.g. 17°C in heating mode
	Time control	Comfort mode with timer
	Protection mode	Frost protection, e.g. 7°C Heat protection, e.g. 35°C
	Fan level	Current fan speed (0-3)
AUTO	Automatic mode	Fan-speed is dependent on controller




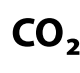

4.6 General

	On	General switching command function
	Off	General switching command function
	Start	General switching command function
	Plus	Values, brightness
	Minus	Values, brightness
	Up	Blind, values
	Down	Blind, values

4.7 Scenes

	Day
	Night
	Energy-saving
	Sitting
	Reading
	Getting dressed
	Television
	Meeting friends
	Dining
	Sleeping
	Night light
	Lock
	Presence simulation
	Number 1 (1-6)

4.8 Information

	Energy consumption
	Room temperature
	Relative humidity
	CO ₂ content
	Water consumption

4.9 Service messages



Cleaning



Service call



First aid



Do not disturb

Schneider Electric GmbH c/o Merten
Gothaer Straße 29, 40880 Ratingen
www.merten.com
www.merten-austria.at

Customer care centre:
Phone: +49 2102 - 404 6000

© 2016 Schneider Electric, all rights reserved

MEG6215-0310_5910_SW_UI_2016_35_EN