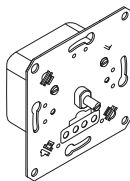


Rotary dimmer for LED lamps and capacitive load

User Guide



MEG5146-0000
SBDLED-RC

For your safety

▲ ▲ DANGER

HAZARD OF ELECTRIC SHOCK, EXPLOSION, OR ARC FLASH

Safe electrical installation must be carried out only by skilled professionals. Skilled professionals must prove profound knowledge in the following areas:

- Connecting to installation networks
- Connecting several electrical devices
- Laying electric cables
- Safety standards, local wiring rules and regulations

Failure to follow these instructions will result in death or serious injury.

▲ ▲ DANGER

HAZARD OF ELECTRIC SHOCK, EXPLOSION, OR ARC FLASH

The outputs may carry an electrical current even when the device is switched off. Always disconnect the fuse in the incoming circuit from the supply before working on connected loads.

Failure to follow these instructions will result in death or serious injury.

Getting to know the dimmer

With the dimmer you can switch and dim LEDs, ohmic or capacitive loads (Trailing Edge).



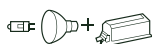
Dimmable LED lamps suitable for trailing edge phase dimmer (LEDc)



Incandescent lamps (ohmic load)



230 V halogen lamps (ohmic load)



Low-voltage halogen lamps with electronic transformer (capacitive load)



CAUTION

The device may be damaged!

- Never connect any inductive load.
- Only connect dimmable loads.
- Danger of overload! Dimming socket outlets is prohibited.
- The dimmer is designed for sinusoidal mains voltages.
- If a terminal is used for looping, the insert must be protected with a 10 A circuit breaker.

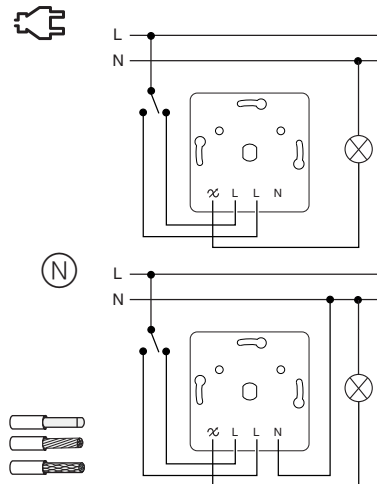
Installing the dimmer



Please note: In case of reduced thermal dissipation, you will need to reduce the load.

Load reduced by	When installed
0%	In a standard flush-installation mounting box
25%	In cavity walls* Several installed in combination*
30%	In a 1-gang or 2-gang surface-mounted housing
50%	In a 3-gang surface-mounted housing

* If more than one factor applies, add the load reductions together.

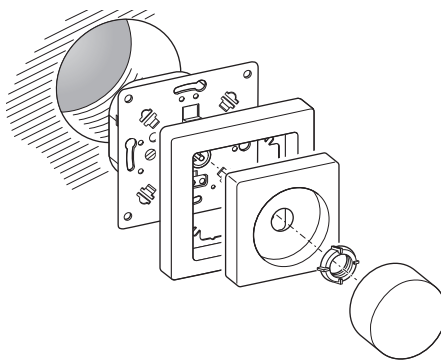


Dimmer with integrated changeover contact. Can be installed in existing changeover circuits.



The dimmer can be installed without neutral wire. Optionally the neutral wire can be connected to improve the dimming behaviour. Notice the technical data. These change depending on the installation of the neutral conductor. → ← (N)

Installing the dimmer and covers.

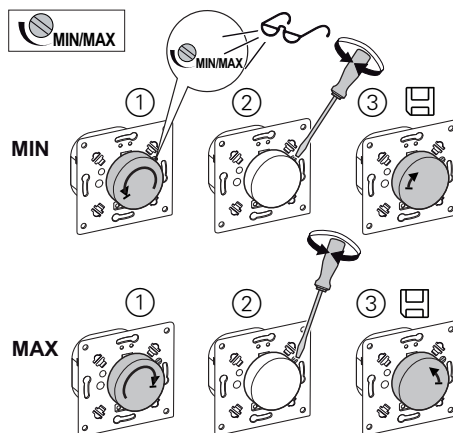


Setting the dimmer

Setting the maximum or minimum brightness



Some LED lamps may flicker in the lower or upper dimming range. In this case, adjust the brightness before installing the cover.



Minimum brightness (MIN)

- ① Switch the dimmer on. Turn the rotary knob left to the end (counterclockwise).
- ② Set the minimum brightness using the screwdriver.
- ③ Turn knob right to save the setting (clockwise). Light flashes short.

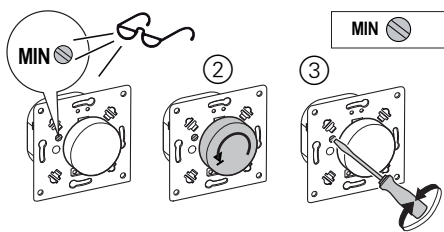
Maximum brightness (MAX)

- ① Switch the dimmer on. Turn the rotary knob right to the end (clockwise).
- ② Set the maximum brightness using the screwdriver.
- ③ Turn the rotary knob a bit left to save the setting (counterclockwise). Light flashes shortly.

Setting the minimum brightness of the lamps.

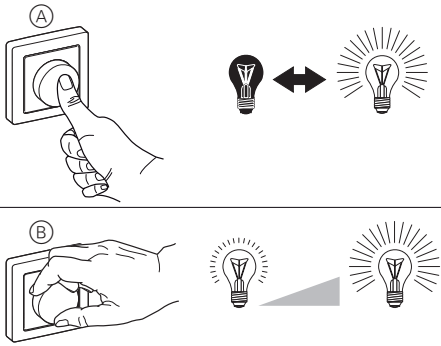


The connected lamps should glow with a minimum brightness when the dimmer is switched on and when the rotary switch has been dimmed down. Some LED lamps may flicker in the lower dimming range. In this case, increase the minimum brightness. Set the minimum brightness before installing the covers.



- ① Switch the dimmer on.
- ② Dim the brightness right down using the rotary knob.
- ③ Set the minimum brightness using the set-screw (MIN).

Operating the dimmer



- A** Press the rotary knob: the connected lamps are switched-on or off.
- B** Turn the rotary knob either clockwise or anti-clockwise: the connected lamps are dimmed brighter or darker.



Dispose of the device separately from household waste at an official collection point. Professional recycling protects people and the environment against potential negative effects.

Merten GmbH

Fritz-Kotz-Str. 8
51674 Wiehl - Germany
se.com/contact

Schneider
Electric

What should I do if there is a problem?

The dimmer dims down regularly during operation and cannot be dimmed up again.

- Allow the dimmer to cool down and reduce the connected load.

The load cannot be switched back on.

- Allow the dimmer to cool down and reduce the connected load.
- Rectify any possible short circuits.
- Renew defective loads.

The load is dimmed to the minimum brightness.

- The circuit is overloaded. -> Reduce load.
- The circuit falls short of the minimum load. -> Increase load.

The load flickers at minimum brightness.

The circuit falls short of the minimum possible brightness value.

- Increase minimum brightness value (set dimming range).

Technical data

Mains voltage:	AC 230 V, 50/60 Hz
Nominal load:	W
LED (with neutral wire):	0 - 200 W (max. 1,3 A) (N)
LED (without neutral wire):	3 - 200 W (max. 1.3 A)
Load type:	Ohmic and capacitive load
Short-circuit protection:	Electronic
Operating temperature:	-5°C to +35°C
Surge protection:	Electronic
Protection:	16 A circuit breaker (10 A circuit breaker if a terminal is used for looping)



LED RC 3-200 W (<1.3 A)
0-200 W (<1.3 A) (N)

R 3-370 W

R 3-370 W

C 3-370 VA