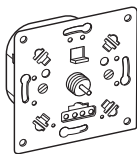


Universal rotary dimmer insert for capacitive and inductive loads

Operating instructions



MEG5139-0000, MTN5138-0000

SBD600RCRL

For your safety

⚠ ⚠ DANGER

HAZARD OF ELECTRIC SHOCK, EXPLOSION, OR ARC FLASH

Safe electrical installation must be carried out only by skilled professionals. Skilled professionals must prove profound knowledge in the following areas:

- Connecting to installation networks
- Connecting several electrical devices
- Laying electric cables
- Safety standards, local wiring rules and regulations

Failure to follow these instructions will result in death or serious injury.

⚠ ⚠ DANGER

HAZARD OF ELECTRIC SHOCK

The outputs may carry an electrical current even when the device is switched off.

- Before working on the loads, always disconnect the device from the supply via the upstream miniature circuit breaker.

Failure to follow these instructions will result in death or serious injury.

Notice

HAZARD OF EQUIPMENT DAMAGE

- If the X terminal is used for looping, the insert must be protected with a 10 A miniature circuit breaker.
- Never connect capacitive and inductive loads at the same time.
- Only connect dimmable loads.
- Sockets must not be dimmed.
- Ensure that the device is disconnected from its circuit during the insulation resistance test.

Failure to follow these instructions can damage the device.

Rotary dimmer insert – introduction

With the Universal rotary dimmer insert for capacitive and inductive loads (referred to below as the **dimmer**), you can switch and dim ohmic, capacitive or inductive loads such as:

- Incandescent lamps and 230 V halogen lamps,
- Low-voltage halogen lamps with dimmable, inductive transformers,
- Low-voltage halogen lamps with dimmable, electronic transformers.

The dimmer detects the type of load connected automatically.

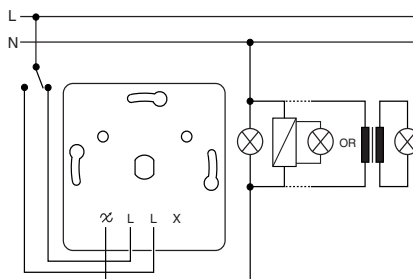
Installing the dimmer

i The maximum allowed load is reduced due to the decreased heat dissipation when the device is not installed into a single standard flush-mounted mounting box as shown below:

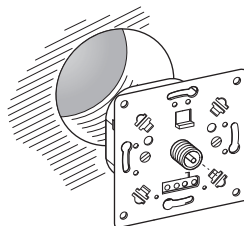
Load reduction by	Mounted in cavity walls *	Several installed together in combination *	In 1-gang or 2-gang surface-mounted housing	in 3-gang surface-mounted housing
25 %	x	x		
30 %			x	
50 %				x

* If several factors apply, add the load reductions together

① Wire the dimmer for the desired application.



② Install the dimmer.

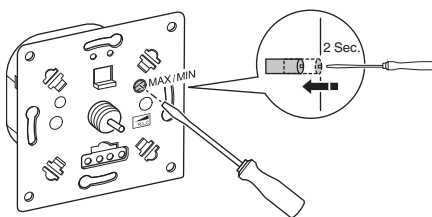


Set the minimum brightness and maximum brightness of the lamps.

i The connected lamps should glow with a minimum brightness when the dimmer is switched-on and when the rotary switch has been dimmed down.

Set the values for the background brightness and the maximum brightness before installing the covers.

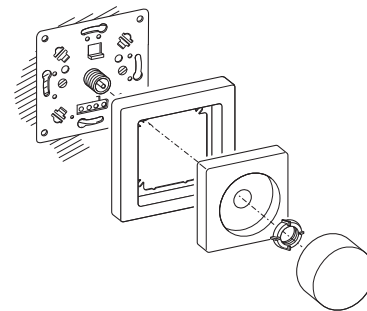
- ① Press the rotary knob: the dimmer is switched-on.
- ② Turn the rotary knob anti-clockwise: the dimmer dims down to the preset minimum value (= background brightness).



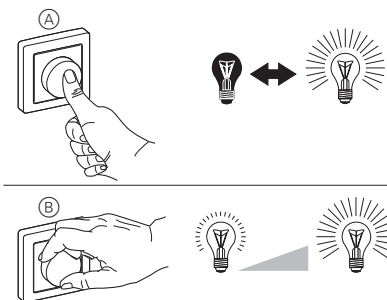
- ③ Push in the micro button (MAX/MIN) with a suitable tool (e.g. a screwdriver). After 2 s, the dimmer dims down to the absolute minimum value.
- ④ Keep the micro button pressed and move the rotary knob clockwise: the minimum value is changed.
- ⑤ Release the micro button as soon as the desired background brightness has been reached: the new minimum value is stored.

i Modifying the maximum brightness works the same way.

Mounting the covers and the knob



Operating the dimmer



- Ⓐ Press the rotary knob: the connected lamps are switched-on or off.
- Ⓑ Turn the rotary knob either clockwise or anti-clockwise: the connected lamps are dimmed brighter or darker.

What should I do if there is a problem?

Notice

HAZARD OF EQUIPMENT DAMAGE

- If there is an overload due to the fact that the operating temperature is too high, it will not be possible to switch on again the dimmer and it must be replaced.

Failure to follow these instructions can damage the device.

The connected lamp doesn't switch on

- ① Reduce the connected load.

The dimmer dims down by itself

- ① Switch off the dimmer and allow to cool down.
- ② Reduce the connected load.

Technical data

Mains voltage:	AC 230 V, 50 Hz
Nominal load:	
MTN5138-0000	20 - 420 W
MEG5139-0000	20 - 600 W
Minimum load:	20 W
Load type:	Either ohmic / capacitive or ohmic / inductive load
Short-circuit protection:	Electronic
Surge protection:	Electronic
Connecting terminals:	Screw terminals for max. 2x 2.5 mm ²
Operating temperature:	+5°C to +35°C



Dispose of the device separately from household waste at an official collection point. Professional recycling protects people and the environment against potential negative effects.

Merten GmbH

Fritz-Kotz-Str. 8
51674 Wiehl - Germany
se.com/contact

Schneider
Electric