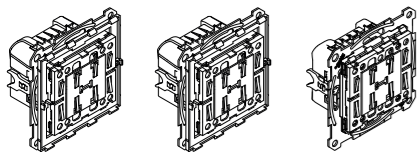


## Side controller Plus

User Guide



### System D

**Side controller Plus, 1-gang**  
Art. no. MEG5119-6000

**Side controller Plus, 2-gang**  
Art. no. MEG5129-6000

### System M / Iso JOY

**Side controller Plus, 1-gang**  
Art. no. MEG5119-0300

**Side controller Plus, 2-gang**  
Art. no. MEG5129-0300

## Necessary accessories

- To be completed with:
- Corresponding 1-gang or 2-gang rockers
- Frame in corresponding design

## Accessories

- PlusLink Expander (Art. no. MEG51300-0000)
- PlusLink distributor (3 cycles) (Art. no. MEG5130-0001)

## For your safety

### ⚠ ⚠ DANGER

#### HAZARD OF ELECTRIC SHOCK, EXPLOSION, OR ARC FLASH

Safe electrical installation must be carried out only by skilled professionals. Skilled professionals must prove profound knowledge in the following areas:

- Connecting to installation networks
  - Connecting several electrical devices
  - Laying electric cables
  - Safety standards, local wiring rules and regulations
- Failure to follow these instructions will result in death or serious injury.**

### ⚠ ⚠ DANGER

#### HAZARD OF ELECTRIC SHOCK

The PlusLink carries an electrical current and the outputs may carry an electrical current even when the device is switched off.

- Before working on the device or the loads, always disconnect the device from the supply via the upstream fuse.

If one or more PlusLink lines are separately fused in your installation then they are not electrically isolated from one another.

- In this case, you should use the PlusLink Expander.

**Failure to follow these instructions will result in death or serious injury.**

### Notice

#### HAZARD OF EQUIPMENT DAMAGE

- Connect all connected devices of one or several PlusLink lines to the same phase or use a PlusLink terminal for cross-phase installation
  - Ensure that the device is disconnected from its circuit during the insulation resistance test..
- Failure to follow these instructions can damage the device.**

## Getting to know the side controller Plus

With the side controller Plus, you can control all receiving devices of a **PlusLink** line.

Receiving devices include, for example, the following inserts completed with corresponding modules:

- Electronic switch insert, 1-gang/2-gang
- Relay switch insert, 1-gang/2-gang
- Universal dimmer insert, 1-gang/2-gang
- Blind control insert
- DALI insert
- 1-10 V insert

The side controller Plus has one PlusLink output for connecting to a PlusLink line. To be able to use the **PlusLink (PL)**, you require a separate core in your installation.

You can use the side controller Plus to globally control lights and blinds, e.g.:

- Lights: switching on/off, dimming
- Blinds/roller shutters: raising/lowering, up/down in steps

In addition to that, you can use the side controller Plus, 2-gang via its scene keys (S1, S2) to retrieve global light and blind scenes for all connected devices of the PL lines. When the scene is retrieved, the saved brightness values or position values of the blind are activated. It is possible to change the scenes according to your wishes and save them.

## Understanding PlusLink

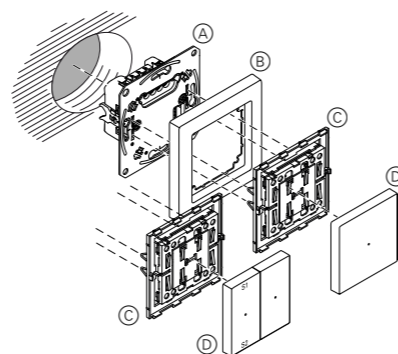
What you need to know about the PlusLink:

- To be able to use the PL, you require a separate core for each PL line in your installation.

| Recommended cables for PL installation | Maximum total cable sections in a PL line |
|--|---|
| NYM-J 3x1.5 mm <sup>2</sup>            | 100 m                                     |
| NYM-J 4x1.5 mm <sup>2</sup>            | 80 m                                      |
| NYM-J 5x1.5 mm <sup>2</sup>            | 65 m                                      |

- All devices connected to one or more PL lines must be connected to the same phase. The PlusLink terminal is required for cross-phase installation.
- The PL carries mains voltage.
- The PL transfers the commands from the sending devices to the receiving devices. Individual addressing of the devices in the PL line is not possible. All devices are always activated at the same time.
- A maximum of 10 sending and 10 receiving devices can be connected to a PL line.
- The PL is not subject to prioritisation. Each new command overwrites the previous one.
- No separate software is required for using the PL.

## Installing the side controller Plus



- (A) Insert (see function overview)
- (B) Frame
- (C) Push-button module, 1-gang/2-gang
- (D) Rockers, 1-gang/2-gang

## Operating the side controller Plus: global light and blind control via PlusLink

Operation is shown using the side controller Plus, 2-gang as an example.

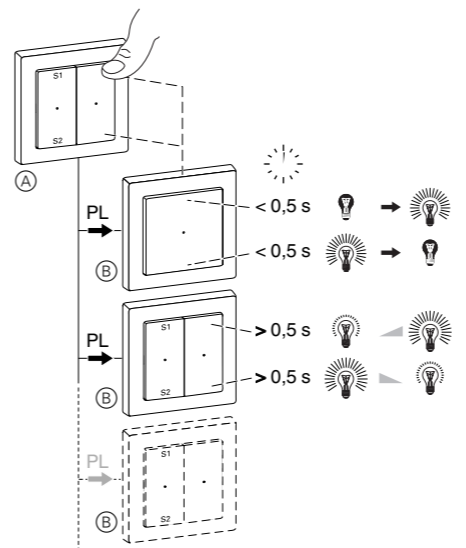
"Blind/roller shutter" will be referred to below as just "blind".

### Light control

#### Example of switching on/off and dimming a PL line:

On operation of the push-button module on the side controller Plus, all loads in the PL lines are controlled together:

- short press on the push-button (< 0.5 s): switching on/off
- long press on the push-button (> 0.5 s): dimming



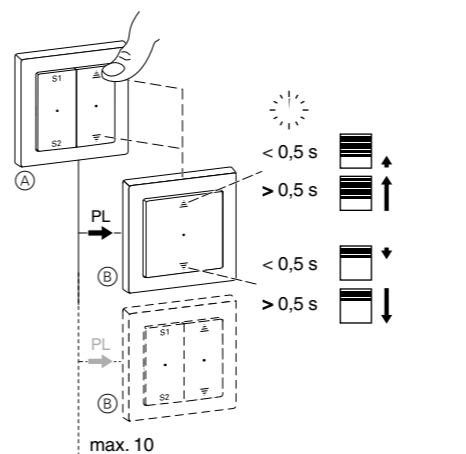
- (A) Side controller Plus
- (B) For example: electronic switch insert, relay switch insert, universal dimmer insert, DALI insert, or 1-10 V insert

### Blind control

#### Example of raising/lowering and up/down in steps of a PL line

On operation of the push-button module on the side controller Plus, all loads in the PL lines are controlled together:

- long press on the push-button (> 0.5 s): raising/lowering
- short press on the push-button (< 0.5 s): up/down in steps



- (A) Side controller Plus
- (B) Blind control insert

## Operating the side controller Plus: retrieving, changing and saving global scenes via PlusLink

When you save a scene, you always save the current state of **all** connected devices of a PL line.

Proceed as follows to change and save a scene according to your requirements:

- ① Change the states of individual devices in the light and/or blind scene.
- ② Save the scene.

### Retrieving light or blind scenes

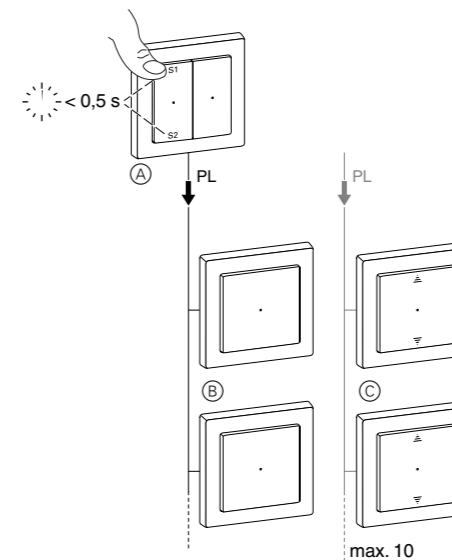
(only for side controller Plus, 2-gang)

#### Standard scenes

All receiving devices are delivered from the factory with presettings for a light or blind scene.

S1: Light on (100%) / blind up  
S2: Light off / blind down

- ① Retrieve scene: Press the S1 or S2 push-button briefly.
- The devices of the light scene adopt the saved brightness value.
- The devices of the blind scene initially move to the uppermost position. After the set running time has elapsed (the standard is 2 minutes), the blinds move to the saved position.

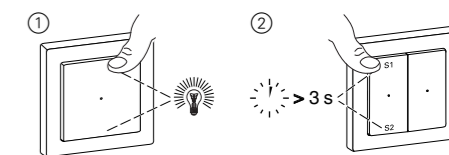


- (A) Side controller Plus, 2-gang
- (B) PL line with light scene: e.g. electronic switch insert, relay switch insert, universal dimmer insert, Dali insert or 1-10 V insert
- (C) PL line with blind scene: Blind control insert

## Changing and saving light scenes

(only for side controller Plus, 2-gang)

Using a dimmer as example:



- ① Set the brightness values of the lamps that you want to change on the receiving device.
- ② Save scene: Press the S1 or S2 push-button for a long time.

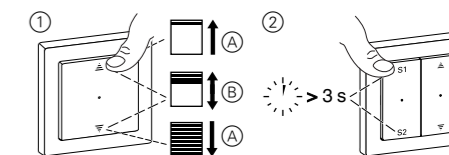
All lamps are switched off briefly and then back on again to indicate that the saving procedure was successful. Then the lamps adopt the saved brightness value.

## Changing and saving blind scenes

(only for side controller Plus, 2-gang)

In combination with the push-button module Basic on the receiving insert, you can only save the fixed position values of "up/down" (ⓐ) for blind scenes.

In combination with the push-button modules on the receiving insert, you can save any position values (ⓐ ⓑ).



- ① (A) Set the positions (up/down) of the blinds that you want to change on the receiving device.
- (B) Set the positions (any values) of the blinds that you want to change on the receiving device.
- ② Save scene: Press the S1 or S2 push-button for a long time.

The blinds are lowered and raised by one step to indicate that the saving procedure was successful.

**Operate side controller Plus:  
Controlling ARGUS Presence sensor  
module via PlusLink**

**Staircase lighting function and light  
control with ARGUS Presence**

The side controller Plus can be used to manually control ARGUS Presence sensor modules via **PlusLink**. Thanks to the switching inserts you can use a brightness and movement-dependent staircase lighting function and the dimming inserts also allow you to use a light control function. You can use the side controller Plus to activate various functions and operating modes.

**Operating modes**

- **Automatic mode:** the lighting function starts and stops automatically. A push-button can also be actuated to manually start the functions and activate overshoot time.
- **Semi-automatic mode:** the lighting function can only be started manually by actuating the push-button. The function stops depending on movement and brightness or when a push-button is pressed. Semi-automatic mode is activated via potentiometer ("OFF" position) on the sensor module in contrast to automatic mode. This mode is only available for single-channel operation.
- **Presentation mode:** e.g. when a video is shown the lighting remains switched off even if movement is detected. Functions are always activated manually (push-button pressed three times). Functions are always deactivated depending on movement or manually (push-button pressed once).
- **24 h staircase lighting circuit:** the lighting remains switched on or off for up to 24 hours. In contrast to presentation mode, deactivation is not dependent on movement. You can manually switch between automatic mode, "24 h on" and "24 h off". When semi-automatic mode is activated it is also possible to switch to the "24 h staircase lighting circuit". "24 h off" is activated on the sensor module with the DIP switch 2 "OFF".

The automatic, semi-automatic and presentation operating modes as well as the "24 h staircase lighting circuit" can be used in combination with light control or with a staircase lighting function.

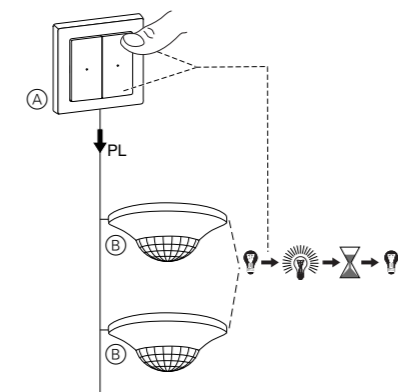
For light control, the desired brightness level can be moved up or down by holding the push-button down (> 5 s). The **setpoint change** is activated on the sensor module with the DIP switch 2 "OFF".

**Overview of side controller Plus functions**

| Push-button  | Function and push-button actuation   |
|--|--|
| Upper right (2-gang module)<br>or<br>upper (1-gang module) | <ul style="list-style-type: none"> <li>• Starts light control or staircase lighting function and stops them in semi-automatic mode too (1 x &lt; 0.5 s)</li> <li>• Increases setpoint of the light control function (1 x &gt; 0.5 s)</li> <li>• Starts presentation mode (3 x &lt; 0.5 s)</li> <li>• Stops presentation mode (1 x &lt; 0.5 s)</li> </ul> |
| Lower right (2-gang module)<br>or<br>lower (1-gang module) | <ul style="list-style-type: none"> <li>• Starts light control or staircase lighting function and stops them in semi-automatic mode too (1 x &lt; 0.5 s)</li> <li>• Decreases setpoint of the light control function (1 x &gt; 0.5 s)</li> <li>• Starts presentation mode (3 x &lt; 0.5 s)</li> <li>• Stops presentation mode (1 x &lt; 0.5 s)</li> </ul> |
| Upper left (2-gang module)                                 | <ul style="list-style-type: none"> <li>• Lighting "24 h on" (1 x &lt; 0.5 s)</li> </ul>  |
| Lower left (2-gang module)                                 | <ul style="list-style-type: none"> <li>• Lighting "24 h off" (1 x &lt; 0.5 s)</li> </ul>   |

**Example of global staircase lighting function**

When the right button of the push-button module on the side controller Plus (A) is actuated, all local sensor modules (B) in the PL line start the set staircase lighting function **independently** of brightness.

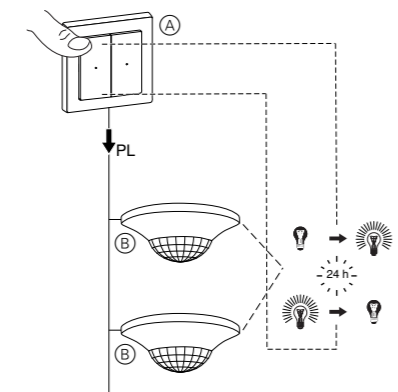


- (A) Side controller Plus
- (B) ARGUS Presence Master

**24-h staircase lighting circuit**

- Upper left push-button: switch on the staircase lighting for 24 h
- Lower left push-button: switch off the staircase lighting for 24 h (prerequisite: DIP2 on ARGUS Presence Master set to "OFF")
- Upper/lower right push-button: deactivate 24-h staircase lighting circuit and start the set staircase timer

**i** If DIP 2 on the ARGUS Presence Master is switched to "ON", the lighting cannot be switched off for 24 h via a push-button module.



- (A) Side controller Plus
- (B) ARGUS Presence Master

**Technical data**

**Insert**

Nominal voltage: AC 220/230 V ~, 50/60 Hz  
 Neutral conductor: not required  
 Output: 1x PlusLink  
 Connecting terminals: Screw terminals for max. 2x 2.5 mm<sup>2</sup> or 2x 1.5 mm<sup>2</sup>  
 Protection: 16 A circuit breaker

Dispose of the device separately from household waste at an official collection point. Professional recycling protects people and the environment against potential negative effects.

**Merten GmbH**

Fritz-Kotz-Str. 8  
 51674 Wiehl - Germany  
[se.com/contact](http://se.com/contact)

