



Wiser™

Catalog 2025

[se.com/wiser](https://se.com/wiser)

Life Is On

Schneider  
Electric



# Contents

Meet Wiser .....	6
System Overview.....	34
Wiser Hub.....	35
Wiser Hub 2nd Generation .....	35
Wiser Wall Box Power Supply.....	36
Micro Modules.....	37
Wiser Micro Module Dimmer.....	37
Wiser Multiwire Micro Module LED Dimmer .....	38
Wiser Micro Module Light Switch .....	39
Wiser Micro Module Shades Control.....	40
Wiser Power Micro Module.....	41
Sensors .....	42
Wiser Window/Door Sensor.....	42
Wiser Water Leakage Sensor .....	43
Wiser Motion Sensor .....	44
Wiser Temperature/Humidity Sensor .....	45
Smart Plug.....	46
Wiser Smart Plug.....	46
Smoke Alarm .....	47
Wiser Smoke Alarm - Battery.....	47
Thermostat.....	48
Wiser Room Thermostat.....	48
Wiser Radiator Thermostat.....	49
Wiser Flush-mounted Thermostat 2 A.....	50
Wiser Thermostat Kit.....	51
Underfloor Heating .....	52
Wiser Underfloor Heating Connection Strip.....	52
Boiler Relay .....	53
Wiser Boiler Relay .....	53
PowerTag .....	54
PowerTag Energy .....	54
PowerTag Control .....	57

<b>Schneider Inverter</b> .....	<b>58</b>
Single-Phase Hybrid Inverter.....	58
<b>Schneider Boost</b> .....	<b>60</b>
Battery Module + Battery Controller.....	60
<b>eMobility Solutions</b> .....	<b>62</b>
Schneider Charge .....	62
Schneider Charge Anti-tripping System.....	63
<b>New Unica</b> .....	<b>64</b>
Connected Relay Switch 10 A .....	65
Connected Blind Control Switch.....	66
Connected Wireless Switch 1/2-gang .....	67
Connected Universal Push-button Dimmer LED .....	68
Connected Universal Rotary Dimmer LED.....	69
Connected Single Socket Outlet 16 A.....	70
Accessories .....	71
<b>Merten System M and System D</b> .....	<b>72</b>
Relay Switch Insert.....	73
Universal Dimmer Insert.....	74
1-10 V Insert .....	75
DALI Insert .....	75
Connected Single Socket Outlet 16 A.....	76
Blind Control Insert.....	77
Connected Push-button Modules 1-gang .....	78
Connected Wireless Switch 1-gang/2-gang .....	80
Accessories .....	81
<b>Reference Numbers</b> .....	<b>85</b>
Find technical information by product reference number.....	85





# Meet Wiser

The smart home market is growing fast, bringing unmissable opportunities. Wiser™ solutions let you add an exciting new dimension to your projects and it is so easy to install.

# It's time to choose a Smart Home - Home of the future

As more homes become connected and the world increasingly relies on electricity, it's expected that global energy consumption will almost double by 2050. **Already, residential housing accounts for 34 % of the world's total energy consumption\* and is set to become the largest consumer of electricity globally.** Therefore, it's critical for homeowners to have tools to control their usage and optimize their energy needs without sacrificing comfort.

Wiser Smart home technology can satisfy this need. **A survey by Schneider Electric found about 40% of consumers expect to adopt smart home technology moving forward.** The survey also found consumers think about leveraging smart home technology as the best way to improve home safety and security and reduce energy costs.

Schneider Electric's vision for the sustainable, connected home of the future enables every device to be easily controlled and personalized through the Wiser Home app, ensuring your home is not just smart but also sustainable.

## Efficiency pays off

To achieve net-zero carbon emissions by 2050, as set out in the Paris Climate Accords, governments around the world are implementing new policies and laws. These local decarbonization initiatives often include subsidies for energy-efficiency improvements in buildings. That's where Wiser and its energy management capabilities come in.

### 20 %

of the world's CO2 emissions come from home\*

\*Source: International Energy Agency

Wiser provides an intuitive system with the tools you need to control your electricity usage and optimize your energy needs, without sacrificing comfort.

“ Our relationship with our homes continues to evolve as we spend more time at home and our lifestyles become increasingly digital.”

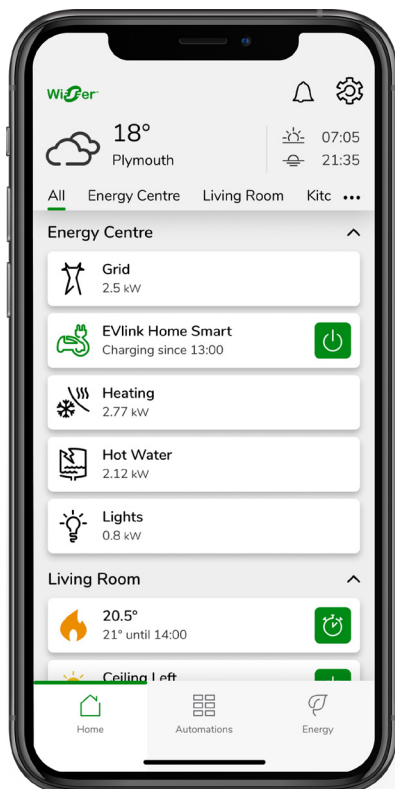
Jai Thampi, SVP, Strategy & Innovation, **Schneider Electric**

# Sustainable and Smart homes

By choosing connected devices that work with Wiser Home app, you are helping your customers to make their home more comfortable while helping reduce energy use and costs.



From busy schedules and endless to-do lists to high energy bills, everyday life at home can get better for your customers. Wiser is here to help them live comfortably and efficiently – with minimum effort.



## Energy efficient...

...to help your clients reduce their energy bills and live more sustainably.

## Designed for a customized experience...

...so your customers can maximize comfort at home with intuitive control.

## Modular and long-lasting...

...to create a durable solution that evolves with customers needs.



Wiser is compatible with Amazon Alexa™ and Google Assistant™.



Wireless Switch



Wiser Home App



Voice Control Device



Wiser Hub 2nd Generation



Wiser HubR 2nd Generation

## Energy management



Schneider Charge



PowerTag Energy Sensor



Schneider Inverter



Schneider Boost

## Temperature control



Boiler Relay



Wiser Room Thermostat



Wiser Radiator Thermostat



Wiser Thermostat 2 A



Wiser Underfloor Heating



## Lighting and shutter control



Switch



Dimmer



Wireless Switch



Smart Plug



Socket

## Safety and security



Wiser Water Leakage Sensor



Wiser Window/Door Sensor



Wiser Temperature/Humidity Sensor



Wiser Motion Sensor



Smoke Alarm

# Lighting Control

Wiser enables personalized lighting ambiances to create the right mood for every activity and moment, day or night. The Wiser Home app enables you to create customized atmospheres, program scenarios, and turn all the lights ON or OFF with a tap.



## Intelligent control

Wiser automatically switches lights OFF when no one is detected in a room after a pre-set period of time.



## The perfect ambiance

With a pre-set “Moment” Wiser adjusts lighting automatically to set the mood, whether it’s party time, dinner time, or just ice-cream-and-chill time.



## Saying goodnight in style

At bedtime, Wiser turns your lights OFF after a set time. It can also switch interior and exterior lights on at sunset.



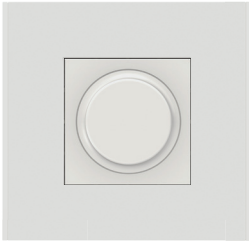
## Adapting to natural conditions

Wiser activates your outdoor lighting automatically when natural light falls below 300 lux at any time during the day.

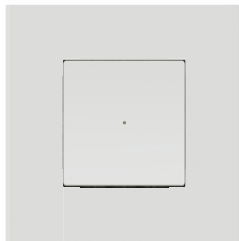
# Products for lighting control

Choose from a variety of stylish New Unica and Merten range of lighting devices.

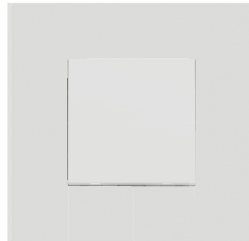
## Switches



Rotary Dimmer

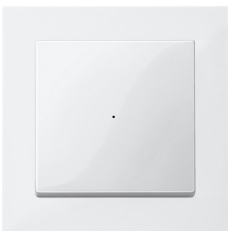


Push-button Dimmer



Relay Switch

## Wireless Switches



1-Gang Wireless Switch



2-Gang Wireless Switch

## Socket



Single Socket Outlet

## Plug



Smart Plug

Bring in the smart functionalities in switches with Wiser Micro Modules.

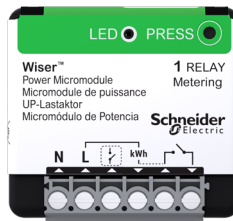
## Micro Modules



Wiser Micro Module Light Switch



Wiser Micro Module Dimmer



Wiser Power Micro Module



Wiser Multiwire Micro Module LED Dimmer

# Shutter Control

With Wiser, you can program the opening and closing of roller shutters – either completely or partially to the chosen percentage – according to your needs or the rhythm of the sun. Advanced shutter control can also contribute to energy savings by helping prevent overheating and overcooling of your rooms.



## Presence simulation

Wiser can simulate presence at home by opening and closing shutters while you're away for a longer period, for example when you're on a work trip or vacation.



## Peace of mind and energy savings

Close your shutters remotely if weather conditions change, for security purposes, or to maintain the temperature inside, and save energy on cooling/heating.



## Seasonal comfort

You can keep your home office cooler during the summer and keep glare off the computer screen by asking Wisier to shut the shutters and block sunlight.



## Call it a day

Thanks to the Summer comfort mode - Automatically open or close shutters based on the inside temperature of the home, compared to the outside temperature.

\*Data source: D&R International, Ltd, Residential Windows and Window Coverings: A Detailed View of the Installed Base and User Behavior, 2013

# Products for shutter control

Whether you're refurbishing or upgrading to a smart home, Wiser shutter control solutions add more functionality to your living space.

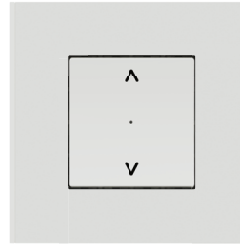
## Switches



1-Gang  
Pushbutton  
Module



Wireless Switch



Blind Control Switch

## Micro Module



Wiser  
Micro Module  
Shades  
Control

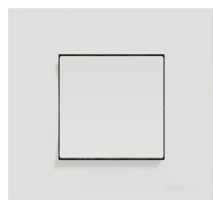


# Make your home smarter and more stylish

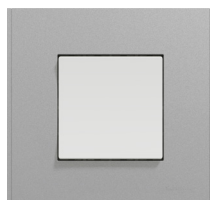
Wiser works with connected wiring devices from a variety of ranges, catering to diverse interior styles and tastes. You'll easily find a design to match your preferences, whether it's for a new build or a renovation project.

## Personalized

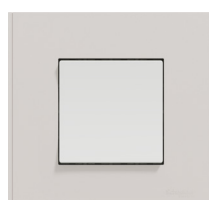
New Unica and Merten offer a wide range of designs.



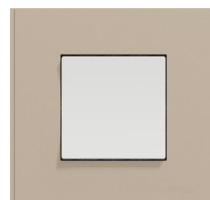
Unica Deco  
White



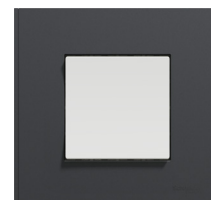
Unica Deco  
Aluminum



Unica Deco  
Light gray



Unica Deco  
Taupe



Unica Deco  
Anthracite



Merten System D  
Lotus White



Merten System D  
Stainless Steel



Merten System D  
Anthracite



Merten System D  
Sahara



Merten System M  
Active White



Merten System M  
Aluminium



Merten System M  
Anthracite

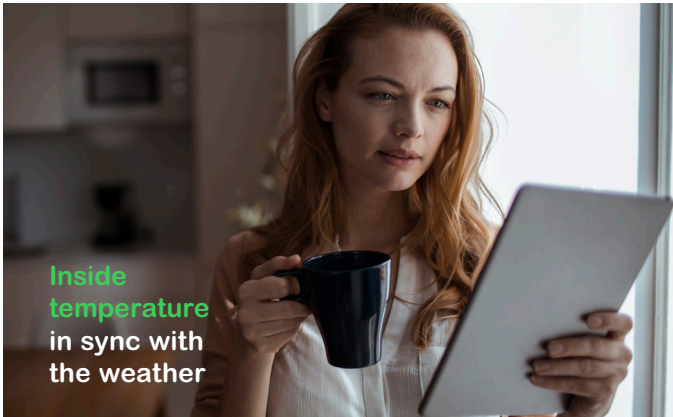


Merten System M  
Black Matt



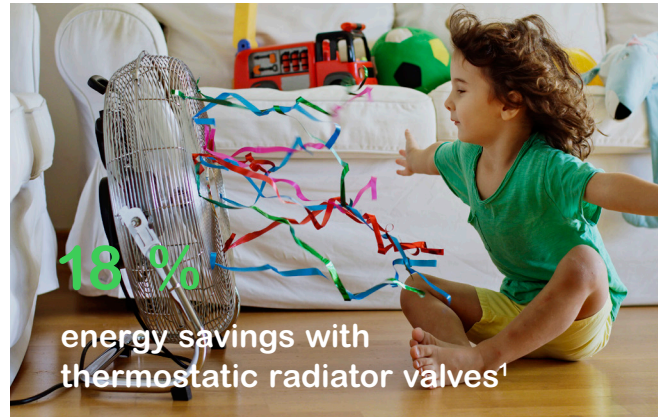
# Temperature Control

Wiser gives you advanced control over the temperature at home so you can lower your energy bills while boosting individual comfort.



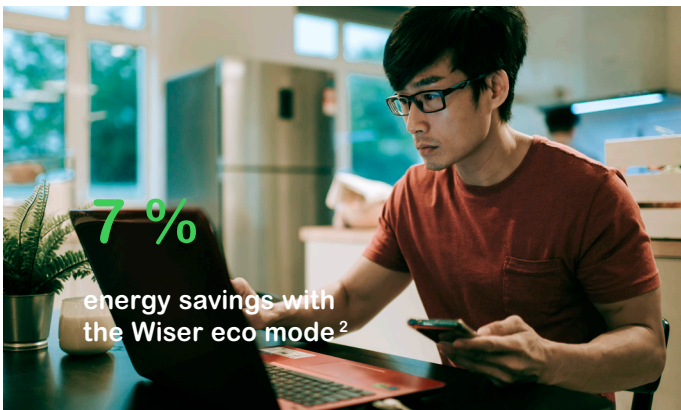
## Schedules for temperature control

Wiser can be set to adjust the temperature at home according to the weather outside or individual schedules. This way, you save on energy and costs while enjoying the highest level of comfort.



## Making every room just right

Everyone has their own rhythm and preferences. That's why with Wiser, every family member can heat their room independently.



## Automated savings with the eco mode

The Wiser Home app's comfort mode can automatically determine when to start heating your home if the day is warmer or cooler than expected.



## Peace of mind when away

By activating the Away Moment before departure, you can be sure the heating is turned OFF and no energy is wasted. If the temperature gets too low, Wiser will turn ON the heating automatically.

<sup>1</sup>Data source: Assessing the energy savings from Thermostatic Radiator Valves in a whole house test facility, BEAMA, 2018

<sup>2</sup>Based on a Schneider Electric study on 153 UK households

<sup>3</sup>Data source: Fraunhofer Institute

# Products for temperature control

Add smart heating control to your home to enjoy the right temperature at all times. You will also find devices that work with the Wiser Home app to help you stay on top of energy bills. Here is what Wiser offers:



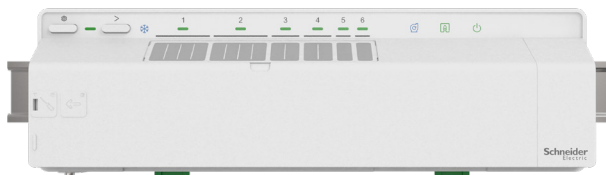
Wiser Radiator Thermostat



Wiser Room Thermostat



Wiser Flush-Mounted Thermostat 2 A



Wiser Underfloor Heating

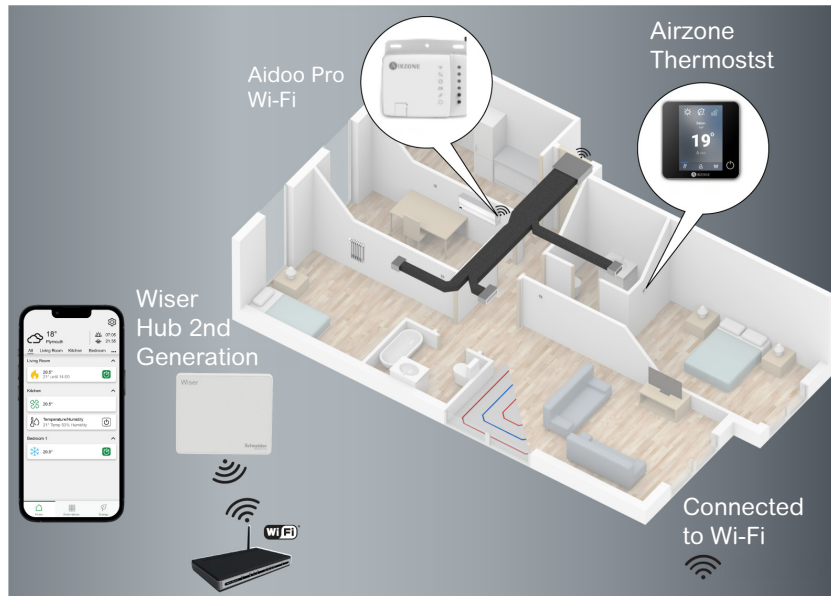


Wiser Boiler Relay



Wiser HubR 2nd Generation

# Airzone - Heat pump interfacing



Airzone - Simplified, connected, and optimized way of room heating and cooling with ducted systems

## Control and distribution of hot/cool air zone by zone

Airzone is a global leader in Heat Pump zoning control systems, allowing to control heating and cooling in each room individually.

Through the Airzone interface, Wiser users can control the room heating and cooling using the Wiser Home app. It is always possible to control the room temperature using Airzone thermostats.

The motorized dampers in rooms control the airflow based on the room thermostat settings. The system regulates the heat pump based on the needs of the individual rooms.

## Advantages of Airzone interfacing with Wiser:

- User can have a single interface for managing the smart home system
- Wiser enables energy management system capabilities like optimizing AC according to energy tariffs and making the best use of energy produced by photovoltaic (PV) panels

## Aidoo Pro Wi-Fi

Aidoo Pro Wi-Fi is a solution that lets you control individual AC units through the Wiser Home app. You can connect one Aidoo device to each AC unit (split, cassette, ducted) and control multiple Aidoo devices at the same time using the Wiser Home app.

### Features:

- Advanced remote for the Wi-Fi® control of your air conditioning via the Wiser Home app
- It connects to the air conditioning unit via cable to prevent communication failures and unintended activations
- It maintains the inverter functionality and efficiency levels in your HVAC system. Aidoo communicates with your AC unit using the manufacturer's protocol
- Bidirectional communication: more reliable AC control

**Note:** Aidoo Pro Wi-Fi is applicable only for customers in Spain

Note: For more detailed information on Airzone, Scan the QR code or follow the link: [Airzone User Guide](#)





# Safety and Security Solutions

With Wiser, you get greater peace of mind with improved home safety, thanks to smart sensors that detect unusual movement and situations, and alert the system to notify you.



## Peaceful travels

With a simple tap on the Wireless Switch, you can activate an Away Moment when leaving home and get notified if windows and doors have been left open by mistake.



## Protection from intruders

Wiser can notify you and turn ON the lights automatically if it detects presence around your home, for example when the Away Moment is active.



## Flooding prevention

The water leakage sensor sends you a notification through the Wiser app if leakage is detected, so you can address the issue quickly to avoid damage.



## Smoke detection

With a connected smoke alarm integrated into your Wiser system, all the lights will switch ON in case of an incident to facilitate evacuation. In the event of a network connectivity failure, the alarm system will still work normally.

# Products for safety and security

Wiser sensors are the eyes and ears of your smart home system. They're unobtrusive and easy to install by yourself.



Wiser Motion Sensor



Wiser Water Leakage Sensor



Wiser Temperature/  
Humidity Sensor



Wiser Window/  
Door Sensor



Wiser Smoke Alarm

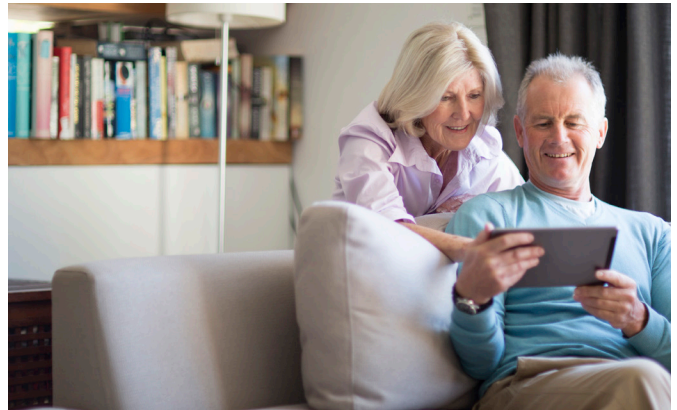
# Energy Management

With energy costs on the rise, knowing how you use energy is key to optimizing your bills. Wiser provides you with real-time information on electricity consumption and equipment status to help you maximize savings. It also lets you manage energy better via schedules and automations.



## Peaceful travels In the know

Wiser notifies you if an appliance's energy consumption suddenly spikes, so you can quickly identify and tackle the issue.



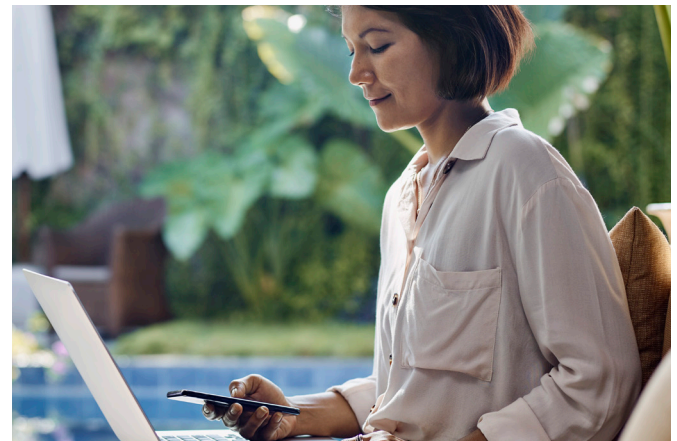
## Understanding usage

On the Wiser energy dashboard, you can track in real time how much energy is being used by each device and how this usage translates into costs.



## Smart choice

You can schedule electric vehicle charging in off-peak hours to take advantage of lower energy tariffs.

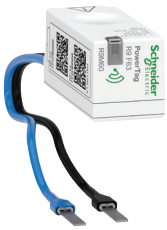


## Make better-informed decisions

With just a tap on the app, you can check your heating usage in the current and previous months, as well as savings enabled by Wiser.

# Products for energy monitoring and EV Charging

These connected devices collect information for the Wiser system, so you know exactly how much energy you are using and where.



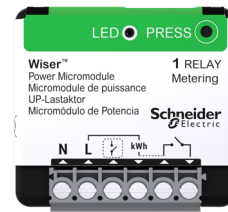
PowerTag Energy Sensor



Wiser Smart Plug



Single Socket Outlet



Power Micromodule

With the Schneider charger, you can charge your electric vehicle conveniently and safely at home while reducing costs and CO<sub>2</sub> emissions.



Schneider Charge



Schneider Inverter



Schneider Boost

**Quick Home Connect can be upgraded to our complete Wiser™ Smart Home Solution. Simply add the Wiser Hub and download the Wiser Home app.**



## Quick Home Connect

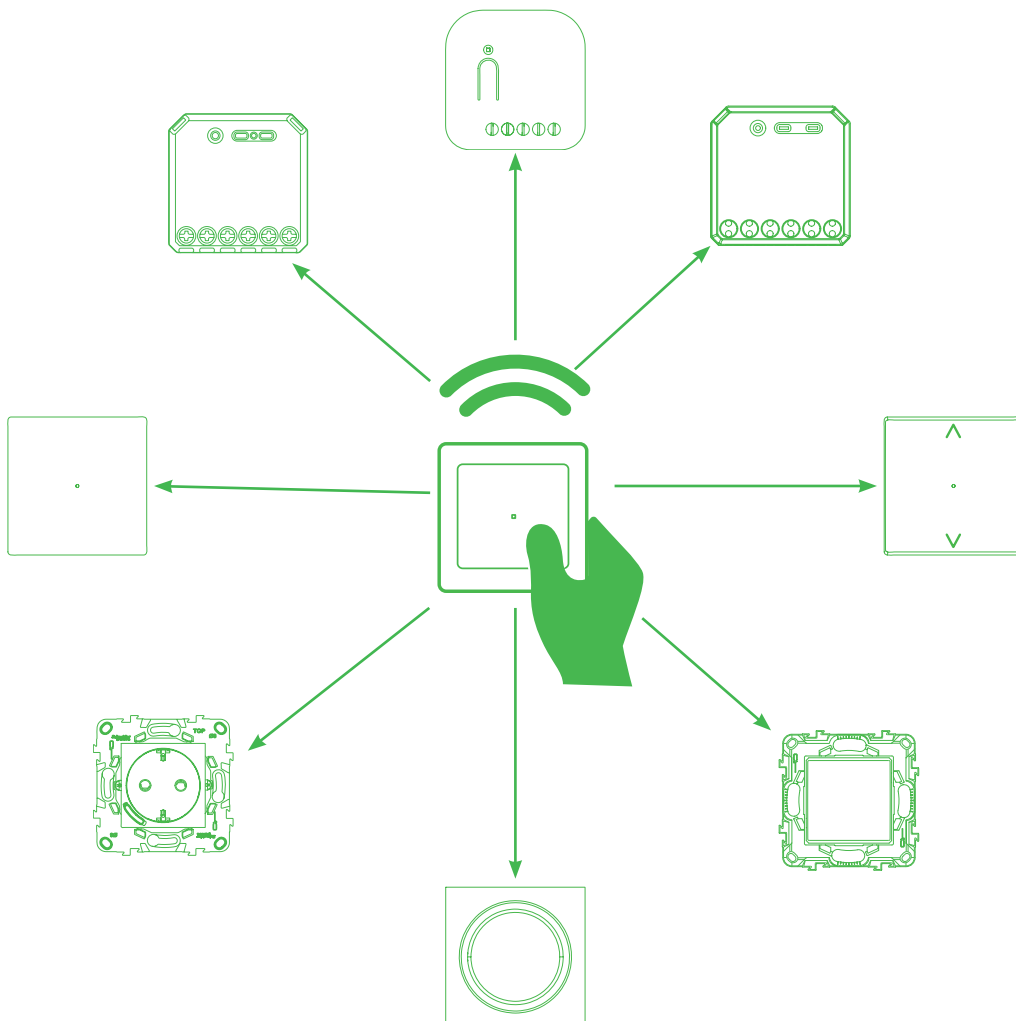
# Connected home technology to empower simplified, stylish living with automation

Quick Home Connect feature is one of our most popular, stylish, and connected solutions. It facilitates binding a wireless switch to the existing range, creating a seamless room control experience. Even better, this versatile wiring solution does not require a Hub or an app. It is suitable for every kind of home, from basic apartments to luxurious spaces.

**With our wireless Quick Home Connect feature, you can enjoy personalized benefits such as:**

- **Convenience:** An additional switch to control the same lights from two places
- **Easy installation:** An additional switch next to your bed without pulling in wires/wall boxes

A great fit for renovation projects, it is easy to use as it can be paired with your home's smart devices in just five clicks. It also comes with a complete kit to start your "My Smart Home" journey.



# Wiser Hub and Home app

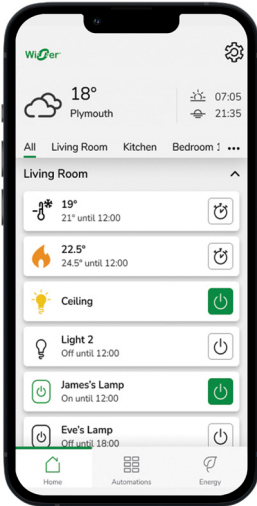
The Wiser™ Hubs provide a Wi-Fi® and internet connection to Wiser devices. They host and execute the Wiser Home app.

The Wiser Home app allows you to control, wherever you are, all the connected devices with a smartphone or a tablet. The app is also compatible with the latest technologies such as Amazon's Alexa or Google Assistants and with our Merten and New Unica switches. Your smartphone or tablet then becomes the energy dashboard for your home.

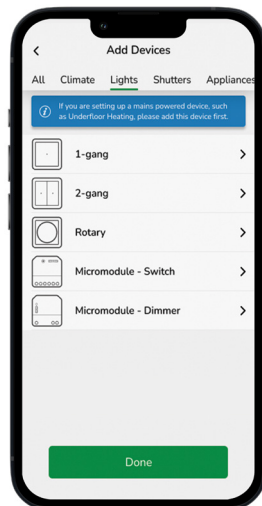


# Wiser Home app – designed for commissioning and controlling Wiser Home devices

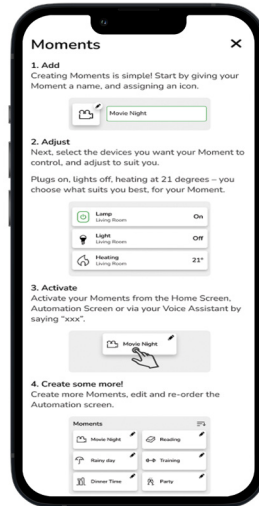
The Wiser Home app turns your smartphone into an all-purpose tool for smarter home ownership. Tap and swipe to fine-tune various settings in your home, from anywhere, for greater comfort and efficiency.



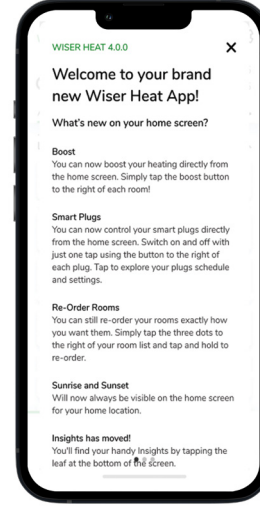
Multiple functions at hand



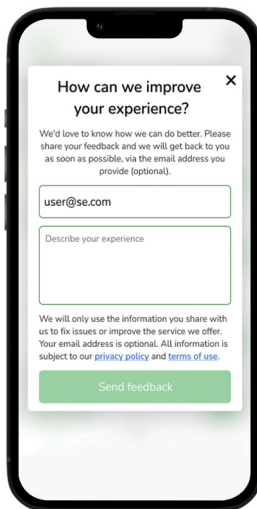
Easy commissioning



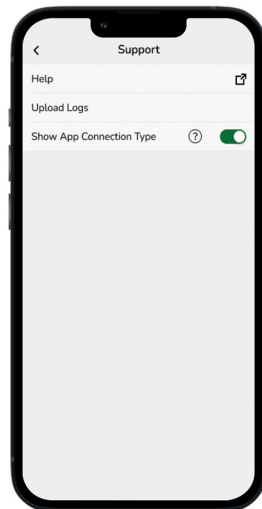
Intuitive creation of moments



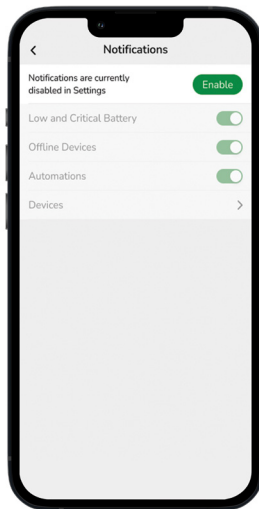
'What's new' section



Ratings and comments




Quick support




Easy selection and setup of notifications

Download the Wiser Home app



**GET IT ON**  
**Google Play**

Download Wiser for Android



**Available on the**  
**App Store**

Download Wiser for iOS



New smart home solutions, same high reliability and quality.

# Connected solutions backed by expert support



## Robust connectivity

With Wiser, you can be sure that you're installing a high-quality, robust smart home system. Wiser uses the Zigbee 3.0 wireless protocol that everyday devices use to connect to each other. Because of this, your customers get a smart home system that is:

- Reliable for all types of residential buildings
- Seamlessly integrated with devices around the home
- Energy efficiency thanks to Zigbee's low-power connectivity system

## High-level protection

Your customers can relax knowing their personal data is protected. Schneider Electric has a secure cloud computing platform that offers best-in-class protection for their data and privacy. Information is only gathered for the purpose of providing superior quality service and a smooth, efficient, and personalized experience.

## Expert support

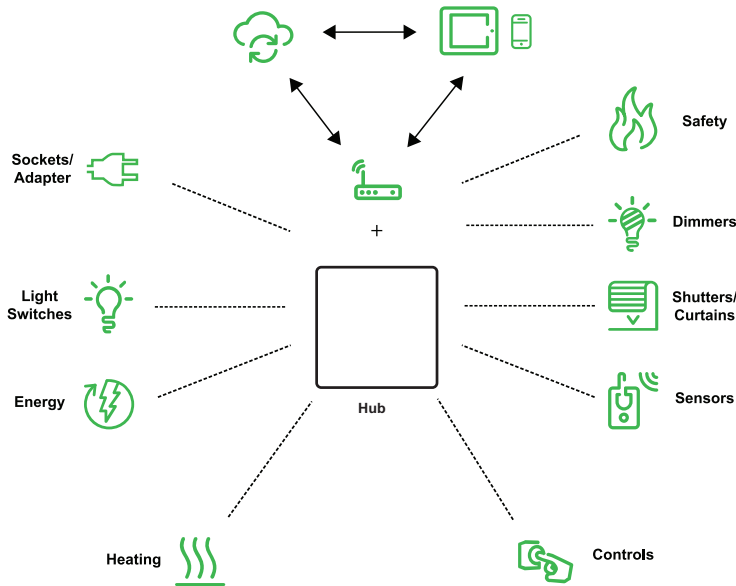
Schneider Electric is with you in your smart home journey all the way. We offer a range of pre-sale and post-sale support including tools to help you get the right solution and trainings to help you make the most of Wiser.

Become an approved installer and join our Electricians Partner Program. You will get access to exclusive content and benefits to help you grow your business. **Sign up now!**

Approved Installer  
for Wiser™

Schneider  
Electric

## System Overview



The Wiser™ system provides a convenient and flexible solution for controlling home devices.

### Wiser Hub

The Wiser Hub is the center of the system, processing control requests and status reports for connected devices.

With a personal account and the Wiser Home app on a smartphone, users can control the Wiser devices in their home from any location where the internet is available.

### Devices

A range of devices are available to provide convenient control of:

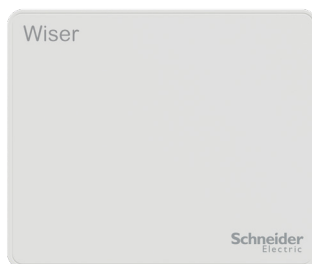
- lighting and dimming
- motorized shutters and blinds
- power outlet switching and metering

Sensors are also available to record and report the following:

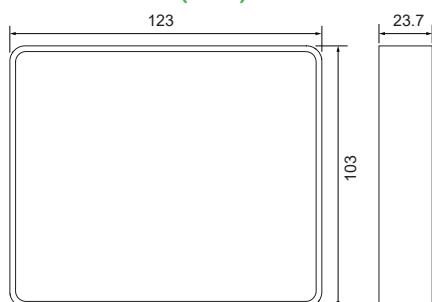
- room occupancy
- ambient light level
- window/door open or closed
- temperature and humidity
- water leakage
- smoke detection



For more detailed information, refer to the Wiser Guides online. Scan the QR code or follow the link:  
[https://www.productinfo.schneider-electric.com/wiser\\_home](https://www.productinfo.schneider-electric.com/wiser_home)



### Dimensions (mm)



## Technical Characteristics

### Overview

The Wiser Hub 2nd Generation is the central control unit of the Wiser Home system. It monitors and controls the devices of your home via the Wiser Home app.

### Main data

**Commercial Reference** CCT501801

**Product colour** □ White

**Product or component type** Hub

### Characteristics

**Rated voltage** 5.0 V DC

**Power consumption** Load: 5 W  
Standby: 1 W

**Pollution degree** 2

**Software class** A

**Radio technology** Wi-Fi®: 2.4 GHz, IEEE802.11 b/g/n  
Zigbee: 2.4 GHz, IEEE802.15.4

**Radio frequency** Wi-Fi®: 2412...2472 MHz  
Zigbee: 2405...2480 MHz

**Max. radio-frequency power transmitted** Wi-Fi®: +17dBm (16 mW)  
Zigbee: +12dBm (50 mW)

### Power supply

**Input voltage** 100...240 V AC, 50/60 Hz, 0.3 A max.

**Output voltage** 5.0 V DC, 2 A, 10 W

**Output connector** USB-C

### Environment

**IP degree** IP20

**Operating temperature** 0...45 °C, indoor use only

**Storage temperature** -20...65 °C

**Relative humidity** 10...90 %, non-condensing

**Ball pressure test temperature** 85 °C

### Complementary

**Dimensions (H × W × D)** 103 × 123 × 23.7 mm

### Certification

Zigbee 3.0

### Note:

- If the Hub is mounted on the wall box, use the Wiser Wall Box Power Supply (CCT501800-0001).
- If the Hub is mounted on a wall or table, use only the supplied AC adapter.



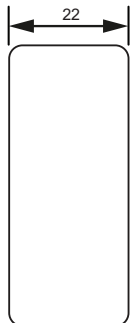
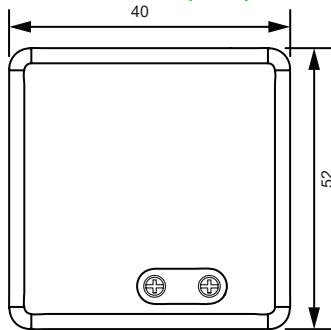
For more detailed information, refer to the Wiser Guides online. Scan the QR code or follow the link:  
[https://www.productinfo.schneider-electric.com/wiser\\_home](https://www.productinfo.schneider-electric.com/wiser_home)

## Wiser Hub

### Wiser Wall Box Power Supply



#### Dimensions (mm)



#### Technical Characteristics

##### Overview

Wiser Wall Box Power Supply is an alternative power supply for the Wiser Hub 2nd Gen mounted on the wall box.

##### Main data

<b>Commercial Reference</b>	<b>CCT501800-0001</b>
Product colour	□ White
Product or component type	Power supply unit

##### Characteristics

Input voltage	100...240 V AC, 50/60 Hz, 0.5 A Max.
Output voltage	5.0 V DC, 1.5 A, 7.5 W
Input terminals	2-pin terminal block, 2.5 mm <sup>2</sup>
Output connector	USB-C
Method of attachment for non-detachable cords	Type Y attachment
Pollution degree	2
Rated impulse voltage	4 kV

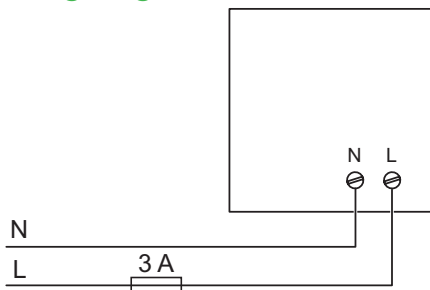
##### Environment

Operating temperature	0...40 °C
-----------------------	-----------

##### Complementary

Dimensions (H × W × D)	52 × 40 × 22 mm
------------------------	-----------------

#### Wiring diagram



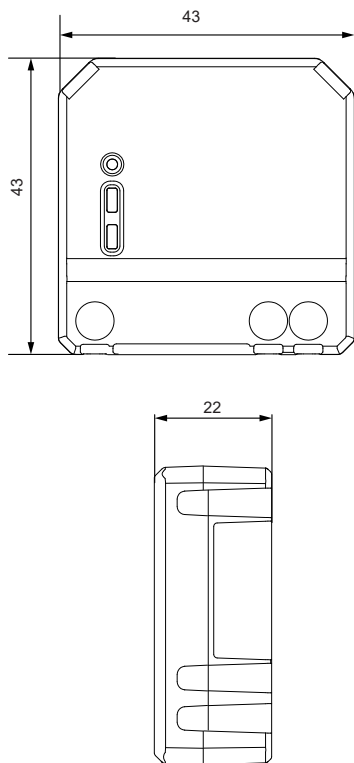
For more detailed information, refer to the Wiser Guides online. Scan the QR code or follow the link: [https://www.productinfo.schneider-electric.com/wiser\\_home](https://www.productinfo.schneider-electric.com/wiser_home)

# Micro Modules

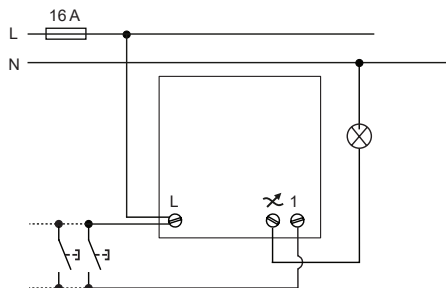
## Wiser Micro Module Dimmer



### Dimensions (mm)



### Wiring diagram



### Technical Characteristics

#### Overview

The Wiser Micro Module Dimmer combines the advantages of smart dimmer functionality with ordinary mechanical push-button switches. It transforms a conventional switch into a connected device that you can control from the switch or through the Wiser Home app. Up to 10 mechanical push-button switches can be connected to one micro module dimmer to control a dimmable load. It can switch and dim ohmic, inductive, or capacitive loads.

#### Main data

<b>Commercial Reference</b>	<b>CCT5010-0002W</b> <b>CCT5010-0002</b>
Product color	■ Dark grey
Product or component type	Micro Module Dimmer

#### Loads

LED lamp 230 V	LED	RC <sup>(1)</sup> : 5...100 W RL <sup>(2)</sup> : 5...20 W
Incandescent lamp 230 V		14...200 W
Halogen lamp 230 V		14...150 W
LV halogen lamps	<ul style="list-style-type: none"> <li>dimmable electronic transformer </li> <li>dimmable ferromagnetic transformer </li> </ul>	14...200 VA 14...150 VA

#### Control options

- **Home control:** To control the micro module dimmer through the Wiser Home app on your smart phone, you need to pair it to the Wiser Hub.
- **Direct operation:** The micro module dimmer can always be controlled directly on-site. You can also connect up to 10 auxiliary push buttons.

#### Characteristics

Nominal voltage	220...240 V AC, 50/60 Hz
Dimming channel	1
Neutral conductor	not required

#### Functions and settings

- Automatic load detection
- Brightness memory function
- Soft start, soft stop
- Electronic overload protection, overheating protection, short-circuit protection
- Remote control by a max. of 10 single mechanical push buttons
- Neutral conductor not required

#### Via Wiser Home app:

- Setting the switch-on brightness or memory function (default setting)
- Setting the dimming range: minimum and maximum brightness
- Setting to RL LED (leading edge) mode for LED lamps
- Setting a timer or a time schedule

#### Complementary

Dimension (H × W × D)	43 × 43 × 22 mm
Installation	Mounting inside a wall box with a minimum depth of 26 mm - If you place the Micro module behind a mechanical push button, use a deep installation box.

#### Certification

- Zigbee 3.0
- (1) RC = Resistive and Capacitive loads
  - (2) RL = Resistive and Inductive loads



For more detailed information, refer to the Wiser Guides online. Scan the QR code or follow the link: [https://www.productinfo.schneider-electric.com/wiser\\_home](https://www.productinfo.schneider-electric.com/wiser_home)

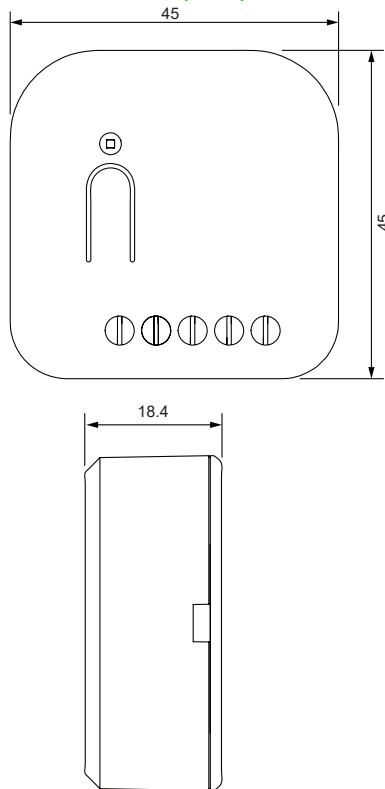


## Micro Modules

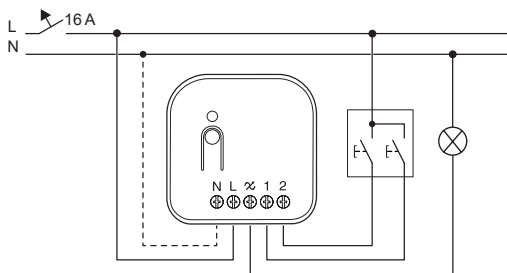
### Wiser Multiwire Micro Module LED Dimmer



#### Dimensions (mm)



#### Wiring diagram



#### Technical Characteristics

##### Overview

The Wiser Multiwire Micro Module LED Dimmer combines the advantages of smart dimmer functionality with ordinary mechanical push-button switches. It transforms a conventional switch into a connected device that you can control from the switch or through the Wiser Home app. Up to 10 mechanical push-button switches can be connected to one micro module dimmer to control a dimmable load. It can switch and dim ohmic, inductive, or capacitive loads.

##### Main data

<b>Commercial Reference</b>	<b>CCT5010-0003</b>
Product color	■ Green
Product or component type	Micro Module Dimmer

Loads		Without neutral	With neutral
LED lamp 230 V		RC: 5...200 W RL: 5...80 W	RC: 0...200 W RL: 0...80 W
Incandescent lamp 230 V		20...300 W	0...300 W
Halogen lamp 230 V		20...300 W	20...300 W
LV halogen lamps dimmable electronic transformer		20...300 VA	0...300 VA

##### Control options

- **Home control:** To control the micro module dimmer through the Wiser Home app on your smart phone, you need to pair it to the hub.
- **Room control / Quick Home connect:** by pairing with other Wiser devices without a Wiser Home app.
- **Direct operation:** The micro module dimmer can always be controlled directly on-site. You can also connect up to 10 auxiliary push buttons.

##### Characteristics

- Nominal voltage: 230 V AC, 50 Hz
- 1 Dimming channel
- Standby: < 0.25 W
- Extension connection: Max. 10 mechanical push buttons
- Length of all cable sections: max. 50 m for 3-wire NYM cable
- Operating frequency: 2405...2480 MHz
- Fuse protection: 16 A circuit breaker
- Max. radio frequency power transmitted: < 10 mW

##### Environment

IP rating	IP20
Operating Temperature	-5...35 °C

##### Functions and settings

- Brightness memory function
- Soft start, soft stop
- Electronic overload protection, overheating protection, short-circuit protection
- Remote control by a max. of 10 single mechanical push buttons
- Neutral conductor: Optional but recommended
- Quick Home Connect functions
- **Via Wiser Home app:**
  - Setting the switch-ON brightness or memory function (default setting)
  - Setting the dimming range: minimum and maximum brightness
  - Setting the LED operating mode manually (RL LED mode)
  - Setting a timer or a time schedule

##### Quick Home Connect functions

The Multiwire Micro Module LED Dimmer can be paired with the wireless switch or when dimmers are paired together, you can adjust brightness without the need for a Hub or a smartphone. Also, you can manage the minimum and maximum brightness levels without using the app.

##### Complementary

Connecting terminals	<ul style="list-style-type: none"> <li>● Tightening torque: 0.5 Nm</li> <li>● Solid conductor: 1 × 0.75...2.5 mm<sup>2</sup></li> <li>● Stranded conductor intended for fixed installation: 1 × 0.75...2.5 mm<sup>2</sup></li> </ul>
Dimension (H × W × D)	45 × 45 × 18.4 mm
Installation	Mounting in wall box with a minimum depth of 26 mm - If you place the Micro module behind a mechanical push button, use a deep installation box.

##### Certification

Zigbee 3.0



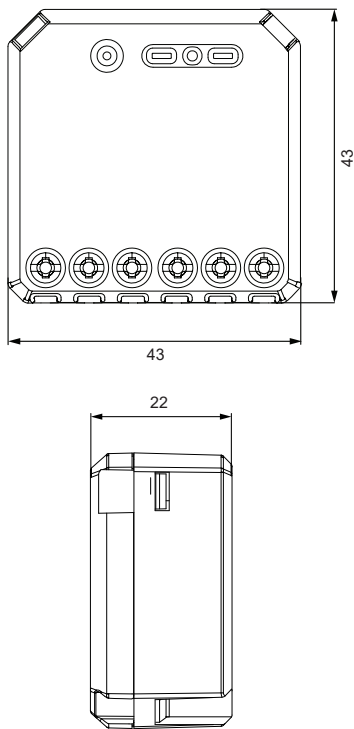
For more detailed information, refer to the Wiser Guides online. Scan the QR code or follow the link: [https://www.productinfo.schneider-electric.com/wiser\\_home](https://www.productinfo.schneider-electric.com/wiser_home)

## Micro Modules

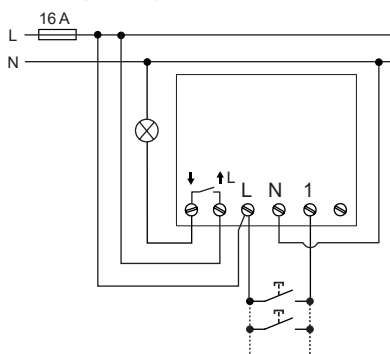
### Wiser Micro Module Light Switch



#### Dimensions (mm)



#### Wiring diagram



#### Technical Characteristics

##### Overview

The Wiser Micro Module Light Switch combines the advantages of smart switch functionality with ordinary mechanical Push-button switches.

It transforms a conventional switch into a connected device, you can control from the switch or through the Wiser Home app. Up to 10 mechanical push-button switches can be connected to one micro module light switch to control a connected load. It can switch ohmic, inductive, or capacitive loads.

##### Main data

<b>Commercial Reference</b>	<b>CCT5011-0002W</b> <b>CCT5011-0002</b>
Product color	■ Dark grey
Product or component type	Micro Module Switch

##### Loads

LED lamp 230 V	LED	200 W
Incandescent lamp 230 V		2200 W
Halogen lamp 230 V		2000 W
LV halogen lamps	electronic transformer 	1050 VA
	ferromagnetic transformer 	500 VA
Capacitive load		10 A, 140 µF
Energy-saving lamps		100 W
Motor		1000 VA
Room heater		1500 W
Electric boiler		2000 W

##### Control options

- **Home control:** To control the micro module light switch through the Wiser Home app on your smart phone, you need to pair it to the Wiser Hub.
- **Room control / Quick Home connect:** by pairing with other Wiser devices without a Wiser Hub.
- **Direct operation:** The micro module switch can always be controlled directly on-site. You can also connect up to 10 auxiliary push buttons.

##### Characteristics

Nominal voltage	220...240 V AC, 50/60 Hz
Nominal current	10 AX
Switching channel with dry contact	1
Neutral conductor	required

##### Functions and settings

- Remote control by a max. of 10 single mechanical push buttons
- Integrated push button for the functional test
- Quick Home Connect functions

##### Via Wiser Home app:

- Setting a timer or a time schedule

##### Quick Home Connect functions

The Wiser Micro Module Light Switch can be paired with a wireless switch to turn the light ON/OFF without a Hub or a smartphone.

##### Complementary

Dimension (H × W × D)	43 × 43 × 22 mm
Installation	Mounting inside a wall box with a minimum depth of 26 mm - If you place the micro module behind a mechanical push button, use a deep installation box.

##### Certification

Zigbee 3.0



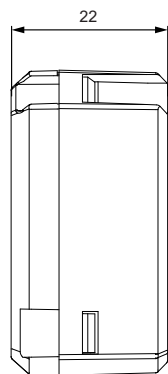
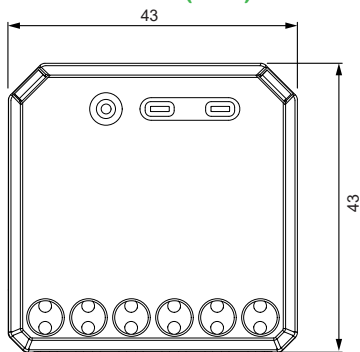
For more detailed information, refer to the Wiser Guides online. Scan the QR code or follow the link: [https://www.productinfo.schneider-electric.com/wiser\\_home](https://www.productinfo.schneider-electric.com/wiser_home)

## Micro Modules

### Wiser Micro Module Shades Control



#### Dimensions (mm)



#### Technical Characteristics

##### Overview

The Wiser Micro Module Shades Control combines smart shutter functionality with conventional mechanical push-button switches. It transforms a conventional switch into a connected device that you can control from the switch or through the Wiser Home app. Up to 10 mechanical push-button switches can be connected to one micro module shades control to control a connected blind or roller shutter.

##### Main data

<b>Commercial Reference</b>	<b>CCT5015-0002W</b> <b>CCT5015-0002</b>
Product color	■ Dark grey
Product or component type	Micro Module Blinds and Shutters

##### Loads

Motor	 500 VA
-------	---

##### Control options

- **Home control:** To control the micro module shades control through the Wiser Home app on your smart phone, you need to pair it to the Wiser Hub.
- **Room control / Quick Home connect:** by pairing with other Wiser devices without a Wiser Hub.
- **Direct operation:** The micro module blinds and shutters can always be controlled directly on-site. You can also connect up to 10 auxiliary push buttons.

##### Characteristics

Nominal voltage	220...240 V AC, 50/60 Hz
Nominal current	4 A, $\cos\phi = 0.6 - 1.0$
Blind channel	1, mechanically and electronically locked against each other
Neutral conductor	required

##### Functions and settings

- Protection of the motor against damage with two mutually mechanically and electronically locked relay contacts
- Remote control by a max. of 10 double mechanical push buttons
- Quick Home Connect functions

##### Via Wiser Home app:

- Setting the running time
- Setting a timer or a time schedule

##### Quick Home Connect functions

The Wiser Micro Module Shades Control can be paired with a wireless switch for controlling a roller shutter/blinds without a Hub or a smartphone.

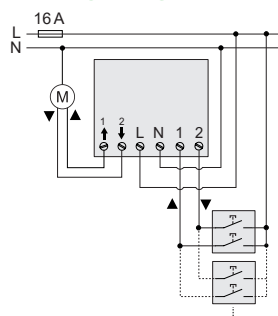
##### Complementary

Dimension (H x W x D)	43 x 43 x 22 mm
Installation	Mounting inside a wall box with a minimum depth of 26 mm - If you place the micro module behind a mechanical push button, use a deep installation box.

##### Certification

Zigbee 3.0

#### Wiring diagram



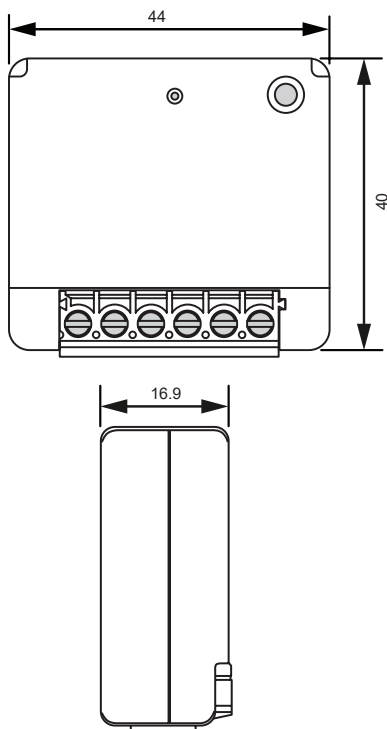
For more detailed information, refer to the Wiser Guides online. Scan the QR code or follow the link:  
[https://www.productinfo.schneider-electric.com/wiser\\_home](https://www.productinfo.schneider-electric.com/wiser_home)

# Micro Modules

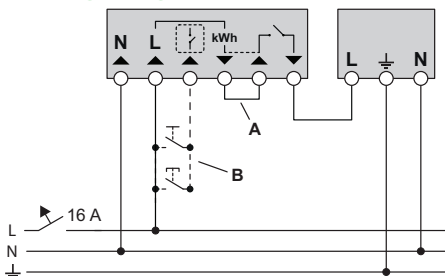
## Wiser Power Micro Module



### Dimensions (mm)



### Wiring diagram



A : Shunt (pre-assembled)  
 B : Push button / switch (optional)

### Technical Characteristics

#### Overview

The Wiser Power Micromodule is intended for switching loads such as a hot water tank or a socket outlet. In combination with the Wiser Home app, the energy consumption can be measured and the micro module can be used for load shedding or demand response. Up to 10 micro modules can be added in the same system. Due to its smaller size, the micro module can be easily installed behind a switch in the flush-mounted box.

#### Main data

<b>Commercial Reference</b>	<b>CCTFR6730</b>
Product color	■ Dark grey
Product or component type	Power Micro Module

#### Loads

LED lamp 230 V		200 W
Incandescent lamp 230 V		2200 W
LV halogen lamps	wound transformer 	500 VA
Motor (single-phase) 230 VA		1180 VA
Resistive load		3000 W
Inductive load		5 A, cos φ = 0.6
Capacitive load		10 A, 25 μF

#### Control options

- **Home control:** To control the micro module through the Wiser Home app on your smart phone, you need to pair it to the Wiser Hub.
- **Direct operation:** The micro module can always be controlled by auxiliary push buttons.

#### Characteristics

Nominal voltage	230 V AC, 50 Hz
Switching capabilities	230 V AC, 14 A
Max. power	3000 W, Integrated zero crossing
Power consumption	< 1 W
Frequency band	2.4 GHz
RF power transmitted	< 10 mW
Operating element	Programming button, status LED

#### Environment

IP degree	IP20
Operating temperature	-20...35 °C

#### Complementary

Connecting terminals	Screw terminals for maximum 1x 1 ... 2.5 mm <sup>2</sup> solid or stranded types
Extension units	Single push-button, unlimited number
Dimension (H x W x D)	40 x 44 x 16.9 mm
Installation	Flush mounting in installation box

#### Certification

Zigbee 3.0
------------



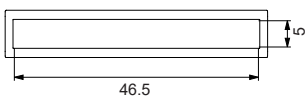
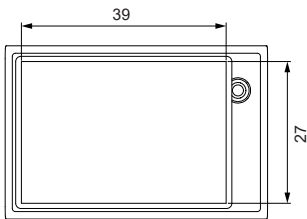
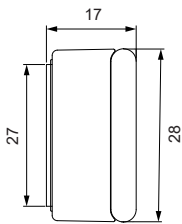
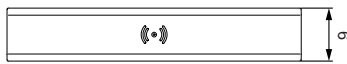
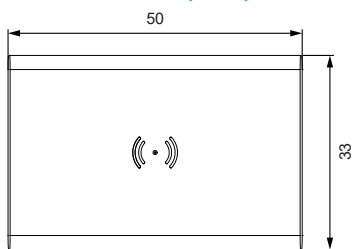
For more detailed information, refer to the Wiser Guides online. Scan the QR code or follow the link:  
[https://www.productinfo.schneider-electric.com/wiser\\_home](https://www.productinfo.schneider-electric.com/wiser_home)

## Sensors

## Wiser Window/Door Sensor



## Dimensions (mm)



## Technical Characteristics

## Overview

The Wiser Window/Door Sensor detects open and closed windows and doors, and reports the status to the Wiser Hub. It consists of two separate parts: the primary part (sensing circuit) and the secondary part (magnet). The primary part includes a sensing circuit that detects the secondary part. When the sensor is connected to the Wiser Hub and the window/door is opened or closed, the primary part (sensor) directly reports the change to the Wiser Hub.

## Main data

Commercial Reference	CCT591012 CCT591011
Product colour	□ White
Product or component type	Sensors

## Characteristics

Operating voltage	3 V DC (1 lithium button cell battery CR 2450)
Battery life	Up to 5 years (may vary based on the usage, frequency of firmware update and environment)

## Environment

IP degree	IP20
Operating temperature	-10...50 °C
Relative humidity	10...95 %

## Complementary

Dimension (H × W × D)	Sensor: 50.3 × 33 × 17.1 mm Magnet: 50 × 9 × 9 mm
Installation	On window and door frames, with screws or adhesive pads
Content	Battery (pre-inserted), primary part (sensor), secondary part (magnet), mounting base plate, double-sided adhesive pads, 2 screws, and 2 wall plugs.

## Certification

	Zigbee 3.0
--	------------



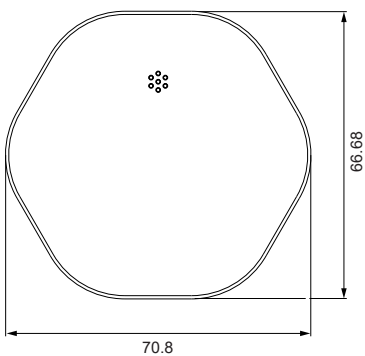
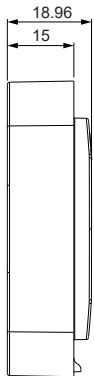
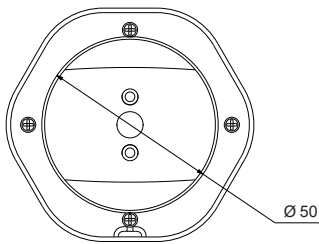
For more detailed information, refer to the Wiser Guides online. Scan the QR code or follow the link:  
[https://www.productinfo.schneider-electric.com/wiser\\_home](https://www.productinfo.schneider-electric.com/wiser_home)

Sensors

Wiser Water Leakage Sensor



Dimensions (mm)



Technical Characteristics

Overview

The Wiser Water Leakage Sensor detects the presence of water and alerts the user through an alarm and/or notification. When the sensor is connected to the Wiser Hub and detects water on the floor, it sends an alarm sound and reports the event to the Wiser Hub. The house owner can receive a notification pushed to the smartphone.

Main data

<b>Commercial Reference</b>	<b>CCT592012</b>
	<b>CCT592011</b>

Product colour	□ White
Product or component type	Sensors

Characteristics

Operating voltage	3 V DC (2 batteries LR03 AAA)
Battery life	Up to 5 years (may vary based on the usage, frequency of firmware update and environment)
Sound level	≥70 dB at 3 m distance

Environment

IP degree	IP44
Operating temperature	-10...50 °C
Relative humidity	10...95 %

Complementary

Dimension (H × W × D)	70.8 × 68.7 × 19 mm
Installation	In the area of detection with the water sensor facing downwards
Content	2 batteries (pre-inserted)

Certification

	Zigbee 3.0
--	------------



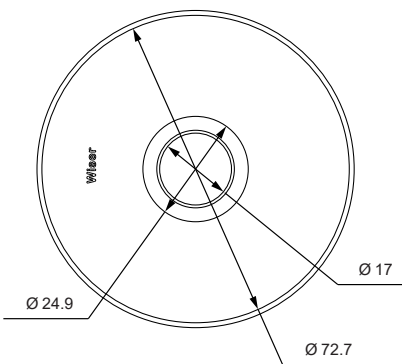
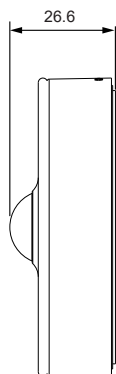
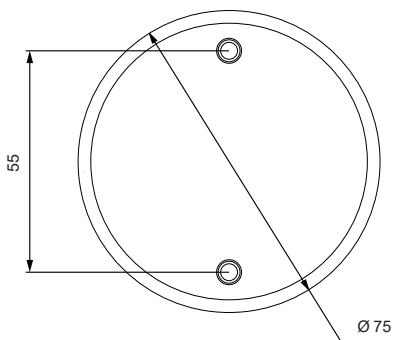
For more detailed information, refer to the Wiser Guides online. Scan the QR code or follow the link:  
[https://www.productinfo.schneider-electric.com/wiser\\_home](https://www.productinfo.schneider-electric.com/wiser_home)

## Sensors

## Wiser Motion Sensor



## Dimensions (mm)



## Technical Characteristics

## Overview

The Wiser Motion Sensor detects movement and measures luminance in a room, and reports the status to the Wiser Hub. It controls Wiser devices to configure the room for a desired effect. The threshold of luminance settings and/or detection of movement can be programmed to determine what action to be taken at that moment, for example, switch on a lamp controlled by a Wiser switch or dimmer.

## Main data

<b>Commercial Reference</b>	<b>CCT595012</b>
	<b>CCT595011</b>
Product colour	<input type="checkbox"/> White
Product or component type	Sensors

## Characteristics

Operating voltage	3 V DC (2 batteries LR03 AAA)
Battery life	Up to 5 years (may vary based on the usage, frequency of firmware update and environment)
Lux measurement range	0 lx to 2000 lx
Lux resolution	1 lx

## Environment

IP degree	IP20
Operating temperature	-10...50 °C
Relative humidity	10...95 %

## Complementary

Dimension (H × W × D)	Ø 75.0 × 26.6 mm
Installation	Surface-mounting, with screws or adhesive pads, on a ceiling or a wall
Ceiling mounting	At 2.5 m Detection angle: 360° Detection range: 4 m diameter max.
Wall mounting	At 1.2 m Detection angle: 90°...110° horizontal and vertical Detection range: 5 m in radius max.
Content	2 batteries (pre-inserted), mounting base plate, double-sided adhesive pads, 2 screws, 2 wall plugs, instruction sheet.

## Certification

	Zigbee 3.0
--	------------



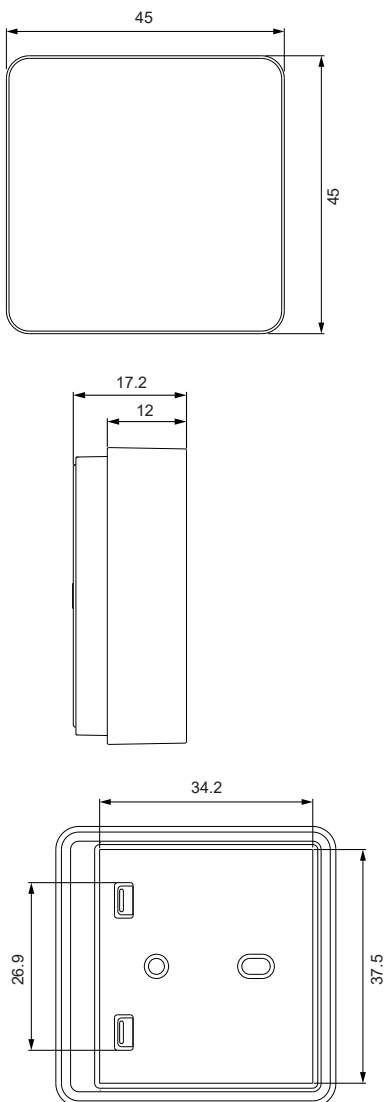
For more detailed information, refer to the Wiser Guides online. Scan the QR code or follow the link:  
[https://www.productinfo.schneider-electric.com/wiser\\_home](https://www.productinfo.schneider-electric.com/wiser_home)

## Sensors

## Wiser Temperature/Humidity Sensor



## Dimensions (mm)



## Technical Characteristics

## Overview

The Wiser Temperature/Humidity Sensor helps to maintain a comfortable environment in the home by detecting changes in temperature and humidity and reporting climate data to the Wiser Hub. The sensor combines two sensors in one unit, measuring temperature and humidity in the environment where it is installed.

## Main data

<b>Commercial Reference</b>	<b>CCT593012</b> <b>CCT593011</b>
Product colour	<input type="checkbox"/> White
Product or component type	Sensors

## Characteristics

Operating voltage	3 V DC (1 lithium button cell battery CR 2450)
Battery life	Up to 5 years (may vary based on the usage, frequency of firmware update and environment)
Temperature accuracy	±1.5 °C
Temperature resolution	0.1 °C
Humidity accuracy	±5 %

## Environment

IP degree	IP20
Operating temperature	-10...50 °C
Relative humidity	10...95 %

## Complementary

Dimension (H × W × D)	45 × 45 × 17.2 mm
Installation	Surface-mounting, with screws or adhesive pads
Content	Battery (pre-inserted), mounting base plate, double-sided adhesive pads, 2 screws, 2 wall plugs, instruction sheet.

## Certification

	Zigbee 3.0
--	------------



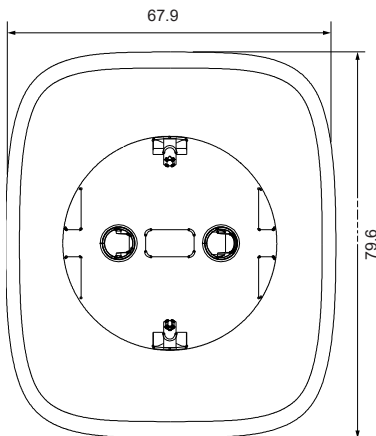
For more detailed information, refer to the Wiser Guides online. Scan the QR code or follow the link:  
[https://www.productinfo.schneider-electric.com/wiser\\_home](https://www.productinfo.schneider-electric.com/wiser_home)

## Smart Plug

### Wiser Smart Plug



### Dimensions (mm)



## Technical Characteristics

### Overview

The Wiser Smart Plug allows you to turn your electrical appliances ON and OFF from the Wiser Home app. It acts as a Radio Frequency (RF) signal range extender within the Wiser Home system to communicate with the Wiser Hub in an environment with poor RF signal.

### Main data

<b>Commercial Reference</b>	<b>CCTFR6501</b>
Product color	□ White
Product or component type	Plug

### Characteristics

Nominal voltage	100...240 V AC, 50 Hz
Nominal power	3000 W
Nominal current	13 A
Standby	Max. 0.5 W
Frequency range	2400 MHz (ISM Band)
Max. radio frequency power transmitted	+8 dBm
Pollution Class	2
Software Class	A

### Environment

IP degree	IPX0
Operating temperature	0...40 °C
Storage temperature	-10...40 °C

### Complementary

Dimension (H × W × D)	79.6 × 67.9 × 72.5 mm
-----------------------	-----------------------

### Certification

CE



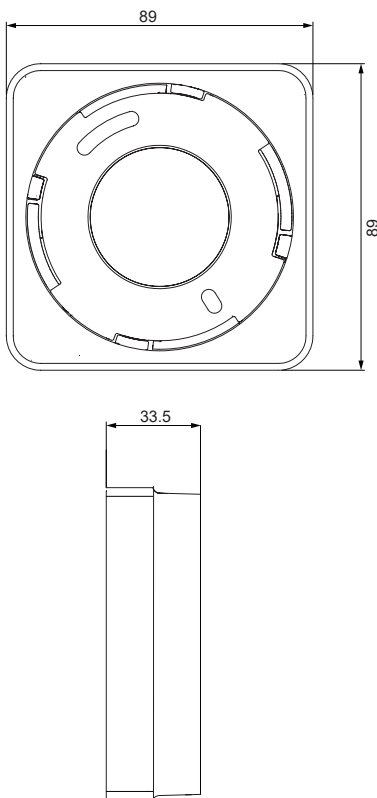
For more detailed information, refer to the Wiser Guides online. Scan the QR code or follow the link:  
[https://www.productinfo.schneider-electric.com/wiser\\_home](https://www.productinfo.schneider-electric.com/wiser_home)

## Smoke Alarm

## Wiser Smoke Alarm - Battery



## Dimensions (mm)



## Technical Characteristics

## Overview

The Wiser Smoke Alarm - Battery uses a photoelectric sensor to detect the smoke generated by fire. When connected to the Wiser system, the device sends the notifications via the Wiser Home app. It can also trigger signals through other products (for example, flashlights) connected to the Wiser system. The smoke alarm can be temporarily deactivated to avoid false alarms when cooking etc. An additional temperature sensor still provides basic protection.

## Main data

Commercial Reference	<b>CCT599002</b> <b>CCT599001</b>
Product colour	<input type="checkbox"/> White
Product or component type	Smoke Alarm

## Characteristics

Operating current	≤ 70 mA
Battery life	10 years (not replaceable)
Sensing type	Photoelectric. This alarm contains NO radioactive material.
Interconnecting	RF+Zigbee, max. 40 devices in one network
Operating frequency	Zigbee: 2405...2480 MHz RF: 868 MHz
Wireless range	40 m indoor line of sight
Horn level	85 dB at 3 m
Hush mode duration	10 minutes
LED brightness levels	High/Low
Alarm memory	72 hours

## Environment

IP degree	IP20
Operating temperature	0...45 °C
Ambient humidity	5...95 %

## Complementary

Dimension (H × W × D)	89 × 89 × 33.5 mm
Installation	Wall or ceiling mounting only

## Certification

CCT599001	Zigbee 3.0, EN 14604: 2005 + AC 2008, Q-Label
CCT599002	Zigbee 3.0, EN 14604: 2005 + AC 2008, NF



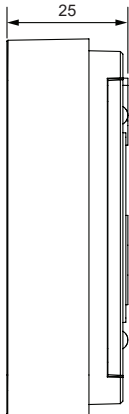
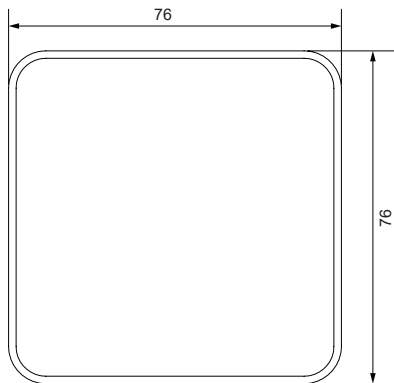
For more detailed information, refer to the Wiser Guides online. Scan the QR code or follow the link:  
[https://www.productinfo.schneider-electric.com/wiser\\_home](https://www.productinfo.schneider-electric.com/wiser_home)

# Thermostat

## Wiser Room Thermostat



### Dimensions (mm)



### Technical Characteristics

#### Overview

The Wiser Room Thermostat is used for all heating types. The room thermostat is an interface for the end-user to view the current room temperature and change the temperature setting in a room. Additional room thermostats can be added to rooms with radiator thermostats.

#### Main data

<b>Commercial Reference</b>	<b>CCTFR6400</b>
Product color	<input type="checkbox"/> White
Product or component type	Connected thermostat

#### Characteristics

Power supply	2 alkaline batteries type IECLR6 1.5 V (AA)
Interfaces	User: TFT screen, touch buttons
Wiring	No cabling required
Transmission	+13 dBm (20 mW)
Pollution degree	2
Radio signal range	30 m in free space
Software class	A

#### Environment

IP degree	IP20
Temperature setting range	5...30 °C
Temperature resolution	0.5 °C
Operating temperature	0...45 °C
Storage temperature	-20...65 °C

#### Complementary

Dimensions (W × H × D)	76 × 76 × 25 mm
Mounting	Wall bracket or table stand



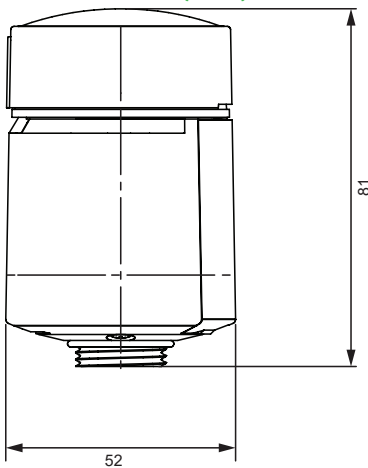
For more detailed information, refer to the Wiser Guides online. Scan the QR code or follow the link:  
[https://www.productinfo.schneider-electric.com/wiser\\_home](https://www.productinfo.schneider-electric.com/wiser_home)

## Thermostats

### Wiser Radiator Thermostat



#### Dimensions (mm)



## Technical Characteristics

### Overview

The Wiser Radiator Thermostat allows setting independent schedules such as exact time and temperature for each room separately through the Wiser Home app. The radiator thermostat uses integrated temperature sensors to control the flow of water through a radiator, thereby regulating the temperature in a room. The target temperature and switching times are set in the Wiser Home app.

### Main data

<b>Commercial Reference</b>	<b>CCTFR6100</b>
Product color	□ White
Product or component type	Radiator Thermostat

### Control Options

- **Home control:** To control the radiator thermostat through the Wiser Home app on your smart phone, you need to pair it to the Wiser Hub.
- **Direct operation:** The radiator thermostat can always be controlled directly on-site.

### Characteristics

Power supply	2 × 1.5 V IEC LR6 (AA) alkaline batteries
Without power supply	Connection data are retained
Battery life	2 years of average expected battery autonomy (depending on battery capacity, condition of use)
Temperature setting range	5...30 °C
Temperature resolution	0.5 °C
Control accuracy	< 0.8 °C at 4 °C/h
Surface temperature at place of installation	Max. 93 °C
Water temperature	Max. 110 °C, Max. continuous 73 °C
Radio technology/frequency	Zigbee 3.0...2.4 GHz (bi-directional, mesh)
Frequency band	2.4 GHz, bidirectional
Transmission power	Max. 20 mW (13 dBm)
Degree of contamination	2
Radio range	30 m (open field)
Energy class	IV - 2 %
Display	3 multi-colored LEDs

### Functions and settings

- Maintains the room temperature at the set value
- Radiator thermostat set up, valve calibration by twisting and maintaining the cap to + for 8 seconds
- Programming and setting via Wiser Home app
- The 3 LEDs (Red – Orange – Blue) are available to display the setup and operating status
- Boost mode (set-point +2 °C) during a programmed period, by twisting the cap to +
- Set-point –2 °C during a programmed period by twisting the cap to –
- No wiring required
- Wireless data exchange with Wiser Hub

### Environment

IP degree	IP30
Operating temperature	0...45 °C
Storage temperature	–20...65 °C
Ambient humidity (non-condensing)	Operating: 25...90 % Storage: 15...95 %

### Complimentary

Dimension (H × Ø)	81 × 52 mm (without adaptor)
Installation	Install the batteries first. On installing the batteries, the radiator thermostat moves to the "valve open" position. The radiator thermostat is now ready for installation. This process can be done manually.

### Certification

Zigbee 3.0

**Note:** 1 Danfoss RA adaptor, 1 Danfoss RAV adaptor, 1 Danfoss RAVL adaptor, and 1 M 30 × 1.5 adaptor provided.



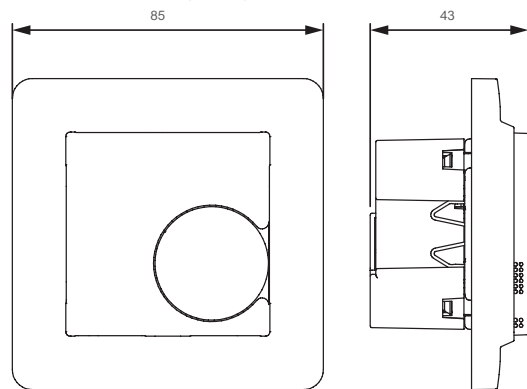
For more detailed information, refer to the Wiser Guides online. Scan the QR code or follow the link:  
[https://www.productinfo.schneider-electric.com/wiser\\_home](https://www.productinfo.schneider-electric.com/wiser_home)

# Thermostat

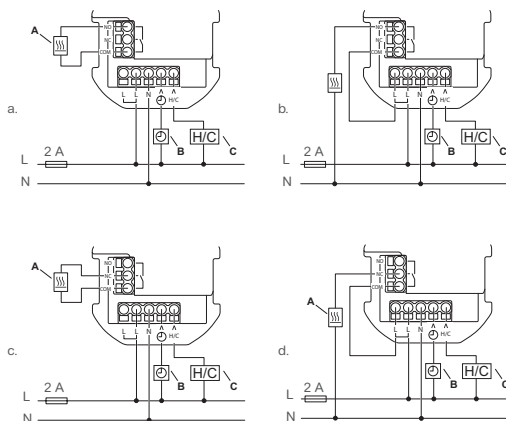
## Wiser Flush-mounted Thermostat 2 A



### Dimensions (mm)



### Wiring diagram



#### Wiring options:

- a. Volt-free wiring. Normally open
- b. Switch live wiring with L-COM jumper wire. Normally open
- c. Volt-free wiring. Normally closed
- d. Switch live wiring with L-COM jumper wire. Normally closed

A Output: max. 2 A resistive load  
 B Input: setback/presence detection  
 C Heating/Cooling input

### Technical Characteristics

#### Overview

The Wiser Flush-mounted Thermostat 2 A is used to control water-based heating and cooling applications, such as water-based underfloor heating and radiator heating. The thermostat can control boilers, heat pumps, motorized valves, and circulating pumps.

#### Main data

<b>Commercial Reference</b>	<b>CFMT02ZB</b>
Product color	□ White

#### Control Options

- Direct operation: The thermostat can always be controlled on-site
- Heat/cool change over (external)
- Universal input setback/presence (external)
- Heating and cooling mode
- Volt-free or live control, normally open or normally closed

#### Characteristics

Nominal voltage	AC 230 V ~, 50 Hz
Max. current rating	2 A
Standby	Max. 0.4 W
Connecting terminals	Terminals for max. 2.5 mm <sup>2</sup> , 0.5 Nm
Neutral conductor	Required
Temperature accuracy	Max. ±0.5 °C (across the range of 4 to 30 °C)
Temperature measurement resolution	Max. 0.1 °C
Display	7 × 5 dot matrix, 3 additional LEDs
Operating frequency	2.405...2.48 GHz
Max. radio-frequency power transmitted	< 10 mW
Protection Class	II
Working voltage	230 V
Over-voltage category	III
Rated impulse voltage	4 kV
Pollution degree	2
CTI rating of insulation components	Min. 175 V
Material group	IIIa (based on CTI value)
Disconnection type	1.B

#### Environment

Operating temperature	0...45 °C
Relative humidity	Max. 90 % non-condensing

#### Certification

Zigbee 3.0 certified

**Note:** The insert is not suitable for directly connecting electrical heating.



For more detailed information, refer to the Wiser Guides online. Scan the QR code or follow the link:  
[https://www.productinfo.schneider-electric.com/wiser\\_home](https://www.productinfo.schneider-electric.com/wiser_home)

# Thermostats Kit

## Wiser Thermostat Kit



### Technical Characteristics

Overview	
Wiser starter kit for boiler control. 1 Channel HubR 2nd Generation + 1 Room Thermostat.	
Main data	
<b>Commercial Reference</b>	<b>CCTFR6901G2</b>
Product color	<input type="checkbox"/> White
Product or component type	Thermostat kit
Product compatibility	Wiser hub generation 2
Complementary	
Device application	Room
Product specific application	Heating
Kit composition	1 × Wiser HubR 2nd Generation (CCTFR6311G2) 1 × Room thermostat (CCTFR6400)



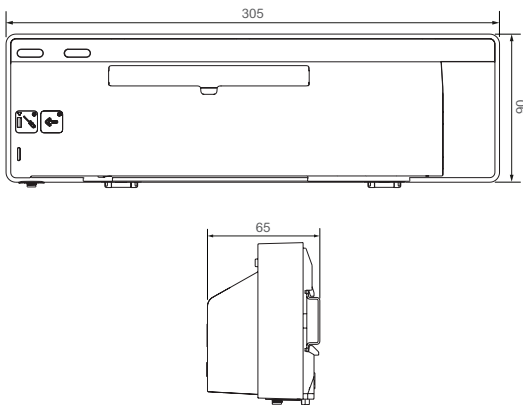
For more detailed information, refer to the Wiser Guides online. Scan the QR code or follow the link:  
[https://www.productinfo.schneider-electric.com/wiser\\_home](https://www.productinfo.schneider-electric.com/wiser_home)

# Underfloor Heating

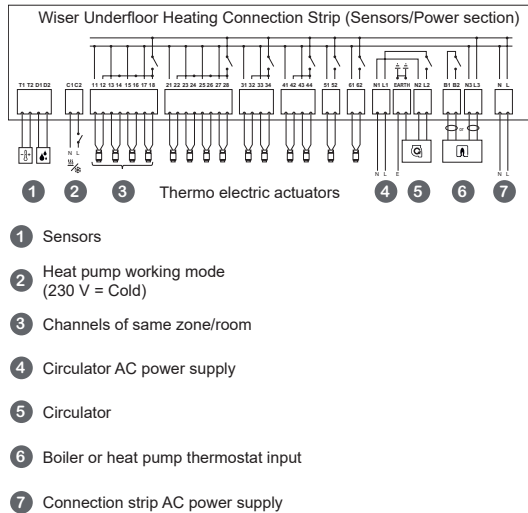
## Wiser Underfloor Heating Connection Strip



### Dimensions (mm)



### Wiring diagram



### Technical Characteristics

#### Overview

The Wiser Underfloor Heating Connection Strip is used to control thermal actuator valve heads to regulate the flow of hot water in the underfloor pipes.

#### Main data

<b>Commercial Reference</b>	<b>CCTFR6600</b>
Product colour	□ White
Product or component type	Connected actuator

#### Characteristics

Power supply	230 V AC ±10 % – 50 Hz
Rated surge voltage	4 kV
Zones and devices per system	Max. 3 connection strips per system Max. 6 zones per connection strip Max. 16 rooms in a system One or several zone per room
Radio technology/frequency	Zigbee 2.4 GHz (Bi-directional, Mesh)
Signal range	30 m Free space
Max. signal strength	14 dBm (25 mW)
Pollution class	2
Energy class	IV = 2 %
Software class	A
Device fuse rating	3, 15 A
Display by LED for	Cooling, channel 1 to 6, Burner or boiler, circulator pump, 230 V
Relays	Normally open 2 A
Capacity in 3 W actuators per zone	Zones 1 and 2: 4 actuators Zones 3 and 4: 2 actuators Zones 5 and 6: 1 actuator
Capacity in 3 W actuators per device	14
Terminals (green)	Screwless for type Y 0.008-1.5 mm <sup>2</sup> , AWG 16-28
Protection class	II
Antenna	External antenna (supplied)
Automatic function	Not applicable: the thermostat controls the temperature
Earthing	Device is not earthed, double insulated. A terminal is provided for an external earth cable.
<b>Environment</b>	
IP rating	IP30
Operating temperature	0...50 °C
Storage temperature	-10...55 °C
Operating humidity	25...90 %
Storage humidity	15...95 %
Remote sensor temperature resolution	1 °C
<b>Complementary</b>	
Dimension (L × H × D)	305 × 90 × 65 mm



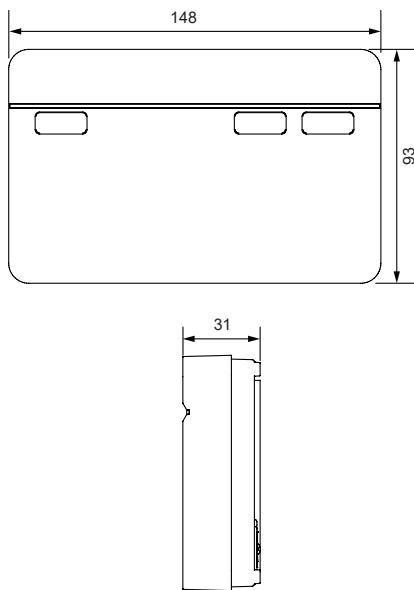
For more detailed information, refer to the Wiser Guides online. Scan the QR code or follow the link:  
[https://www.productinfo.schneider-electric.com/wiser\\_home](https://www.productinfo.schneider-electric.com/wiser_home)

# Boiler Relay

## Wiser Boiler Relay



### Dimensions (mm)



### Technical Characteristics

#### Overview

The Wiser Boiler Relay allows control of a domestic boiler in water based central heating applications. The Boiler Relay contains a 2 A relay that can be connected to a boiler directly or to auxiliary control equipment such as a motorised valve. The Boiler Relay wiring is connected to a wallplate that also serves to mount the product on the wall. The Boiler Relay also contains a digital boiler interface that can be used to provide direct control of the boiler demand (OpenTherm®).

#### Main data

<b>Commercial Reference</b>	<b>CCTFR6001</b>
Product color	<input type="checkbox"/> White
Product or component type	Connected actuator

#### Characteristics

Mains voltage	220...240 V AC, 50 Hz
Switch rating	2 (1) A, 230 V AC total load max. 2.5 A
Wiring	Fixed wiring only
User interface	2x push button/LED
Wired interfaces	1x Relay output, 1x Digital boiler interface, 1x Wiser Boiler Relay power supply
Radio technology/frequency	Zigbee 2.4 GHz (Bi-directional, Mesh)
Maximum RF power transmitted	+17 dBm (50 mW)
Radio signal range	30 m (free space)
Max. radio frequency power transmitted	<10 mW (Zigbee)
Without mains power	Display- LEDs OFF Interfaces- OFF

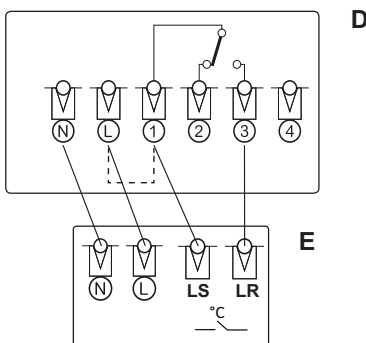
#### Environment

IP degree	IP20
Ambient temperature	0...45 °C
Storage temperature	-10...55 °C

#### Complementary

Dimensions (W × H × D)	148 × 93 × 31 mm
Mounting	Industry standard wallplate

### Wiring diagram



- D Boiler relay wallplate wiring
- E Boiler terminals wiring

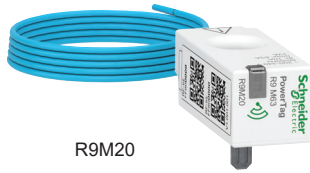


For more detailed information, refer to the Wiser Guides online. Scan the QR code or follow the link: [https://www.productinfo.schneider-electric.com/wiser\\_home](https://www.productinfo.schneider-electric.com/wiser_home)

# PowerTag PowerTag Energy



PowerTag Energy Monoconnect  
63 A Resi9



R9M20

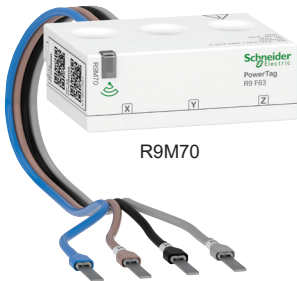


R9M41

PowerTag Energy Flex 63 A Resi9



R9M60



R9M70

## Technical Characteristics

### Overview

PowerTag Energy is a wireless-communication energy sensor designed for energy management and power availability applications for new or existing residential installations. Associated with the Wiser Hub, PowerTag Energy provides a complete wireless class 1 solution to monitor energy at any level of a distribution panel. The PowerTag Energy sensor incorporates every feature required to perform accurate real-time energy values up to 63 A. It is used together with the Wiser Hub to collect information from every equipped circuit to identify which load is consuming most energy. PowerTag Energy is easy to install in no time on new or existing panels.

### PowerTag Energy Monoconnect 63 A Resi9

PowerTag Energy for Resi9 Monoconnect offers: single-terminal circuit breakers, RCDs, and switches with an 18 mm pitch between phase and neutral, rated at less than or equal to 63 A. PowerTag Energy Monoconnect is mounted directly on the protective device with no additional wiring required.

### PowerTag Energy Flex 63 A Resi9

PowerTag Energy Flex can be mounted on a wide range of protective devices that have a rating of less than or equal to 63 A. To allow PowerTag Energy Resi9 F63 to adapt to different types of terminals, the voltage tap lugs can be replaced with other end-pieces or lugs for AWG22/0.33 mm<sup>2</sup> wires.

### Main data

Commercial Reference	R9M20	R9M41	R9M60	R9M70
----------------------	-------	-------	-------	-------

Product color	<input type="checkbox"/> White			
---------------	--------------------------------	--	--	--

Product or component type	Energy Sensors			
---------------------------	----------------	--	--	--

### Characteristics

Rated voltage	Un	1P+N/ 1P+W	Phase-to-neutral	200...240 V AC ± 20 %
	Un	3P+N	Phase-to-neutral	220...240 V AC ± 20 %
			Phase-to-phase	380...415 V AC ± 20 %

Frequency	50 Hz			
-----------	-------	--	--	--

Max. current	I <sub>max</sub>	63 A		
--------------	------------------	------	--	--

Base current	I <sub>b</sub>	10 A		
--------------	----------------	------	--	--

Saturation current	130 A			
--------------------	-------	--	--	--

Starting current	I <sub>st</sub>	40 mA		
------------------	-----------------	-------	--	--

### Environment

Operating temperature	-25...60 °C			
-----------------------	-------------	--	--	--

Storage temperature	-40...85 °C			
---------------------	-------------	--	--	--

Overvoltage category	As per IEC 61010-1	Cat. III		
----------------------	--------------------	----------	--	--

Measuring category	As per IEC 61010-2-30	Cat. III		
--------------------	-----------------------	----------	--	--

Altitude	≤ 2000 m			
----------	----------	--	--	--

Degree of protection	Device only	IP20		
	IK	05		

### Radio-frequency communication

ISM band 2.4 GHz	2.4...2.4835 GHz			
------------------	------------------	--	--	--

Channels	As per IEEE 802.15.4	11 to 26		
----------	----------------------	----------	--	--

Isotropic Radiated Power	Equivalent (EIRP)	0 dBm		
--------------------------	-------------------	-------	--	--

Max. transmission time	< 5 ms			
------------------------	--------	--	--	--

Channel occupancy	Messages sent every	5 seconds minimum		
-------------------	---------------------	-------------------	--	--

### Characteristics of measuring functions

Function		Performance category as per IEC 61557-12	Device measuring range
Active energy	E <sub>a</sub>	Class 1	Total and partial 0 to 99999999.9 kWh
Current	I	Class 1	40 mA to 63 A
Voltage	U	Class 0.5	Un ± 20 %

### Weight

	PowerTag	Type	Weight (g)
R9 M63	R9M20	1P + Wire	16.4
	R9M41	3P + N	35
R9 F63	R9M60	1P + N	16
	R9M70	3P + N	40



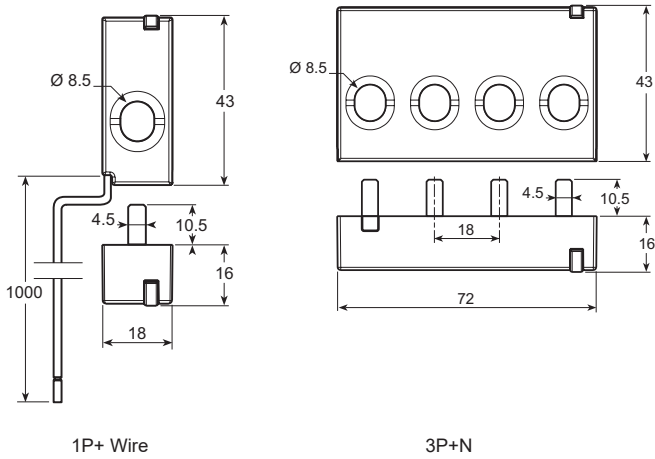
For more detailed information, refer to the Wiser Guides online. Scan the QR code or follow the link:  
[https://www.productinfo.schneider-electric.com/wiser\\_home](https://www.productinfo.schneider-electric.com/wiser_home)

PowerTag  
PowerTag Energy

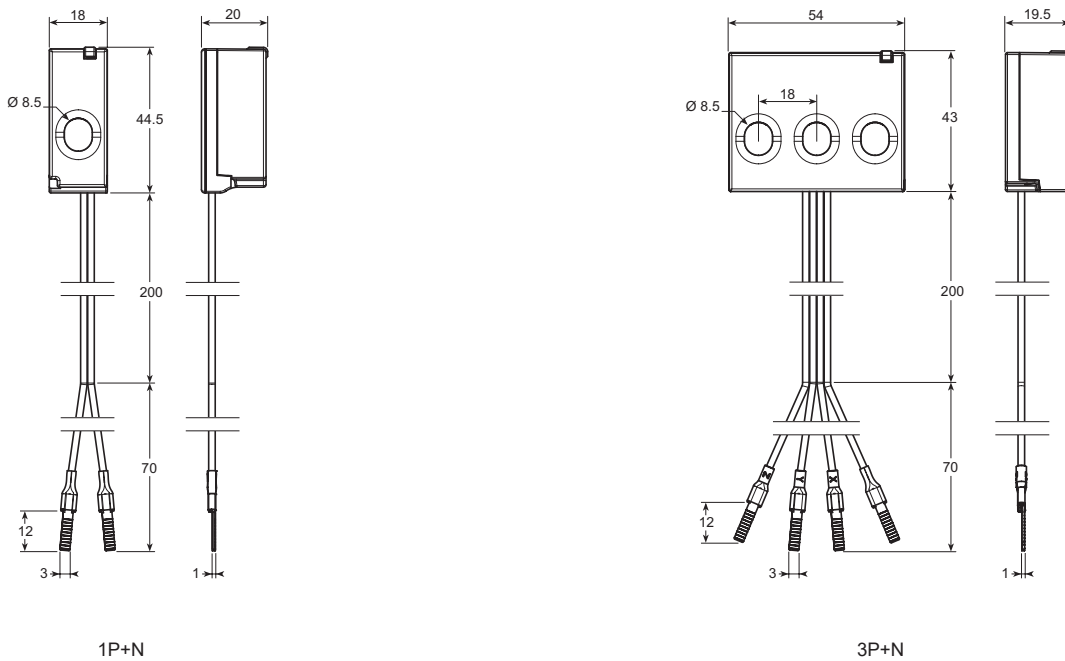


Dimensions (mm)

PowerTag Energy R9 M63



PowerTag Energy R9 F63



For more detailed information, refer to the Wiser Guides online. Scan the QR code or follow the link:  
[https://www.productinfo.schneider-electric.com/wiser\\_home](https://www.productinfo.schneider-electric.com/wiser_home)

# PowerTag PowerTag Energy

Download  
**Wiser Home app**  
Schneider Electric's connected  
technology for homes

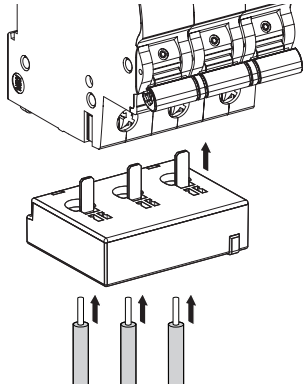
Schneider  
Electric

Available on the  
App Store

GET IT ON  
Google Play

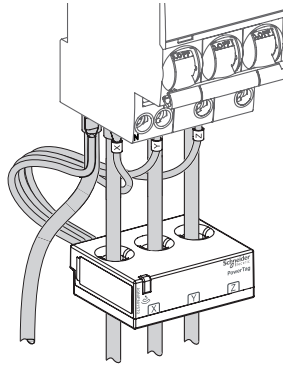
## Connections

PowerTag Energy R9 M63



Stripping length : 18 mm

PowerTag Energy R9 F63



Stripping length: respect the stripping length stated on the device that the PowerTag Energy is associated with.



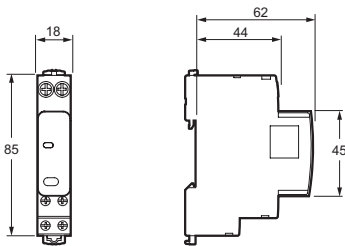
For more detailed information, refer to the Wiser Guides online. Scan the QR code or follow the link:  
[https://www.productinfo.schneider-electric.com/wiser\\_home](https://www.productinfo.schneider-electric.com/wiser_home)

# PowerTag PowerTag Control

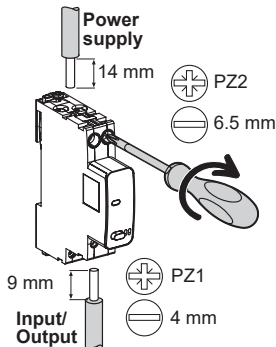


A9XMC1D3  
PowerTag C IO 230 V

## Dimensions (mm)



## Connections



## PowerTag Control

### Overview

PowerTag Control is a wireless-communication module specifically designed for controlling applications. It is part of PowerTag System and Wiser System, allowing to turn a distribution board into a connected panel. PowerTag Control can operate a load remotely through a contactor, or impulse relay.

- Zigbee-communication technology simplifies cabling and commissioning operations: no wiring is required for the PowerTag Control modules to communicate with the Wiser Hub.
- System scalability: PowerTag Control modules can be easily installed in new or existing panels at any time with a simple commissioning operation.
- PowerTag Control modules are DIN rail mounted.

### Main data

Commercial Reference	<b>A9XMC1D3</b>
Supported protocol	Zigbee
Product colour	<input type="checkbox"/> White
Product or component type	Power control module

### Features

Power supply	230 V AC ± 20 %	
Frequency	50/60 Hz	
Maximum consumption	IO	≤ 2 VA
	2DI	≤ 3 VA

### Environment

Operating temperature	-25...60 °C	
Storage temperature	-40...85 °C	
Relative humidity (60068-2-78)	93...40 °C	
Overvoltage category	As per IEC 61010-1	Cat. III
Altitude	≤ 2000 m	
Pollution degree	3	
Degree of protection according to IEC 60529	Front face	IP40
	Casing	IP20
	IK	05

### Characteristics of inputs and outputs

Digital input	
Type	230 V AC, dry contact
Digital output	
Type	230 V AC, dry contact
Relay type	Normally open or normally closed (setting adjustable)
Applicable voltage on output	230 V AC ± 20 %
Minimum/maximum current on output	10 mA / 2 A
Type of output order	Pulse or latch (setting adjustable)
Pulse length in control mode with impulse relay	Nominal: 300 ms

### Radio-frequency communication

ISM band 2.4 GHz	2.4...2.4835 GHz	
Channels	As per IEEE 802.15.4	11 to 26
Isotropic Radiated Power	Equivalent (EIRP)	0 dBm
Channel occupancy	Messages sent	<input type="checkbox"/> On event <input type="checkbox"/> Periodically (5 secs nominal)

### Installation

Installation guideline	It is recommended to install the PowerTag within 3 metres of the Wiser Hub 2nd Generation for best results.
------------------------	---

### Weight (g)

PowerTag C IO 230 V	80
---------------------	----



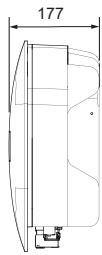
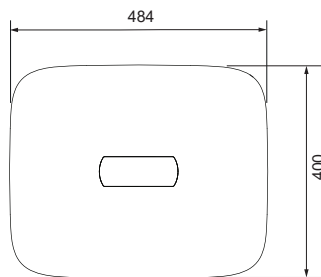
For more detailed information, refer to the Wiser Guides online. Scan the QR code or follow the link:  
[https://www.productinfo.schneider-electric.com/wiser\\_home](https://www.productinfo.schneider-electric.com/wiser_home)

# Schneider Inverter

## Single-Phase Hybrid Inverter



### Dimensions (mm)



## Technical Characteristics

### Overview

The Schneider Inverter is a single-phase high-performance inverter for residential battery-based off-grid and grid backup applications. It is a self-contained DC to AC inverter and battery charger. It is compatible with Schneider Boost and solar applications. You can monitor the inverter using the Schneider Electric Installer Portal and Wiser Home app.

### Main data

Schneider Inverter 1-Phase	HY5K1EU1	HY6K1EU1	HY8K1EU1
<b>Output</b>			
Rated AC output power	4600 W	6000 W	8000 W
Max. apparent AC power	5000 VA	6600 VA	8800 VA
AC rated output voltage	230 V AC		
AC output voltage range	196...253 V		
AC frequency range	50...60 ±5 Hz		
Max. continuous output current	23 A	30 A	37 A
Power factor	0.8 lead 0.8 lag		
Current total harmonic distortion (rated power)	≤3 %		
Typical nighttime power consumption	<5 W		
Grids supported	3 / N / PE		
Utility monitoring, islanding protection, country configurable thresholds	Yes		
AC over voltage category	III		
Charge battery from AC	Yes		
<b>Input</b>			
Max. oversizing PV array power	6900 Wp	9000 Wp	10000 Wp
Max. number of MPPTs	2	3	3
Strings per MPPT	1		
DC oversizing (Allowed DC / AC ratio)	1.5	1.5	1.25
Rated operation voltage	360 V		
MPPT tracking voltage range (full power)	250...480 V	200...480 V	280...480 V
Operating voltage range	80...500 V		
Max. open circuit voltage	500 V		
Max. input voltage	600 V		
Start-up voltage	100...500 V		
Max. input current	13.5 A DC		
Max. input short-circuit current	20 A DC		
Voltage measurement accuracy	±3 V		
PV array configuration	Unearthed (ungrounded)		
PV overvoltage category	II		
2-pole disconnection	Yes		
<b>DC (Battery)</b>			
Compatible battery	Schneider Boost (BATB3KEU3), 7...20 kWh nominal energy		
Number of batteries per inverter	1 Schneider Boost (2...6 modules, 7...20 kWh)		
Rated port voltage	400 V		
Port voltage range	360...480 V		
Max. continuous power	4680 W	5760 W	7920 W
Max. port current	13 A DC	16 A DC	22 A DC
2-pole disconnection	Yes		
Battery to inverter communication	[BMU]--CAN--[BCU]--CAN--[DCDC]--RS485--[Inverter]		



For more detailed information, refer to the Wiser Guides online. Scan the QR code or follow the link:  
[https://www.productinfo.schneider-electric.com/wiser\\_home](https://www.productinfo.schneider-electric.com/wiser_home)

# Schneider Inverter

## Single-Phase Hybrid Inverter



<b>Conversion Efficiency</b>			
Peak	97.4 %		
EU efficiency	96.7 %		
<b>Protection and Features</b>			
Production metering	Collect current and voltage parameters of inverter AC port, and calculate real-time power and quantity of electricity. Backup control system does not have metering devices.		
Backup and battery storage	Through backup control system		
EV charging	AC power supply for EVSE		
<b>Additional Features</b>			
Supported communication Interfaces	RS485, CAN, WLAN-FE/4G (optional)		
Inverter commissioning	Commissioning app		
Transformerless, ungrounded	Yes		
Max. initial short-circuit current	N/A		
DC ground-fault isolation detection	100 kΩ sensitivity		
Anti-island protection	Supported		
DC reverse polarity protection	No, only physical fool-proofing connector		
PV port reverse polarity protection	No, only physical fool-proofing connector		
Backup and battery storage	Through backup control system		
Insulation resistance detection	>1 MΩ		
Ground fault detection	Residual Current Monitoring (RCMU)		
AC short-circuit protection	Yes, integrated		
AC overcurrent protection	Yes, integrated		
Battery port overcurrent protection	No, but integrated in the battery assembly		
Over temperature protection	Yes, integrated		
DC surge protection	Class 2 test level		
AC surge protection	Class 3 test level		
AC over voltage protection	Yes, integrated		
PV DC switch	Yes		
Battery switch	No, but integrated in the battery assembly		
<b>Regulatory</b>			
Authentication	IEC 62109-1/-2		
Emissions EMC	IEC61000-6-1, IEC61000-6-3		
Grid connection standards	RD1699, RD647, RD413, UNE 217002, NTS V2.1 (Spain)		
RoHS, REACH, and WEEE directives	Yes		
<b>Installation Specifications</b>			
AC side conduit specification (voltage/ area)	450 V AC / 6 mm <sup>2</sup>	450 V AC / 10 mm <sup>2</sup>	450 V AC / 10 mm <sup>2</sup>
Battery side conduit specification (voltage/ area)	1000 V DC / 4 mm <sup>2</sup>		
PV side conduit specification (voltage/ area)	1000 V DC / 4 mm <sup>2</sup>		
Dimensions (H × W × D)	400 × 484 × 177 mm		
Net weight	18 kg		
Noise	<45 dBa		
Cooling method	Natural convection		
Mounting	Wall mounted, brackets provided		
Operating temperature	-25...60 °C		
Ingress protection rating	IP65		
Relative humidity	0...95 %		
Altitude	0...4000 m above mean sea level or equivalent		
Recommended AC protection device	32 A	40 A	50 A



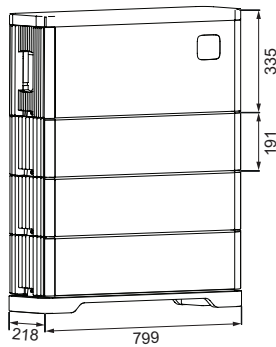
For more detailed information, refer to the Wiser Guides online. Scan the QR code or follow the link:  
[https://www.productinfo.schneider-electric.com/wiser\\_home](https://www.productinfo.schneider-electric.com/wiser_home)

## Schneider Boost

## Battery Module + Battery Controller



## Dimensions (mm)



## Technical Characteristics

## Overview

The Schneider Boost is a high-voltage Lithium Ion Phosphate (LFP) battery storage system that includes a battery controller and two to six battery modules. Residential applications such as energy management and backup power are the focus of the Schneider Boost. The Schneider Boost is required to be installed with the Schneider Inverter in all cases. The Schneider Inverter can connect to one Schneider Boost system. The Installer Portal allows for remote configuration and monitoring of both the Schneider Inverter and Schneider Boost when installed together.

## Main data

Schneider Boost	BAT7KEU1	BAT10KEU1	BAT14KEU1	BAT17KEU1	BAT20KEU1
<b>Features</b>					
Usable energy	6200 Wh	9300 Wh	12400 Wh	16500 Wh	18600 Wh
Rated power	2700 W	4050 W	5400 W	6750 W	8100 W
Number of modules	2	3	4	5	6
Nominal energy	6.912 kWh	10.368 kWh	13.824 kWh	17.28 kWh	20.736 kWh
Normal total voltage of battery modules	108.0...129.6 V DC	162.0...194.4 V DC	216.0...259.2 V DC	270.0...324.0 V DC	324.0...388.8 V DC
Cycle life	10 Y / 3131 cycles (25 °C)				
Communication interfaces	RS485				
Required inverter	Schneider Inverter				
Battery charging sources	Solar, Grid				
<b>Compliance</b>					
Authentication	IEC 63056, IEC 62619, IEC 62477-1				
Transportation	UN38.3, UN3480				
Emissions	EN61000-1/3				
<b>Mechanical Specifications</b>					
Dimensions (W × H × D)	799 × 767 × 218 mm	799 × 959 × 218 mm	799 × 1150 × 218 mm	799 × 1342 × 218 mm	799 × 1533 × 218 mm
Weight	80 ±1 kg	109 ±1.5 kg	138 ±2 kg	167 ±2.5 kg	196 ±3 kg
Mounting	Ground load-bearing				
Operating temperature	-20...55 °C				
Storage Temperature (less than 1 month)	-20...-10 °C and 45...-50 °C				
Storage Temperature (less than 3 months)	35...-45 °C				
Storage Temperature (less than 4.5 months)	25...-35 °C				
Storage Temperature (less than 6 months)	-10...25 °C				
Altitude	6562 ft / 2000 m				
Enclosure protection	IP55				
Humidity	5...95 %				
Cooling	Natural convection				
Noise	< 45 dBA				



For more detailed information, refer to the Wiser Guides online. Scan the QR code or follow the link:  
[https://www.productinfo.schneider-electric.com/wiser\\_home](https://www.productinfo.schneider-electric.com/wiser_home)

## Schneider Boost

### Battery Module + Battery Controller



#### Module Composition

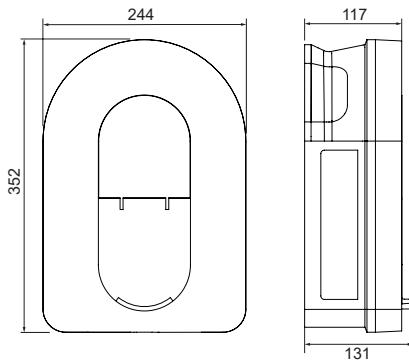
<b>Battery Module</b>		<b>BATPMEU2</b>
Nominal energy		3.456 kWh
Capacity		60 Ah
Nominal voltage		57.6 V DC
Rated current		25 A DC
Cells quantity (series / parallel)		54 (18 / 3) PCE
Peak current		60 A DC (for 10 seconds)
Weight		29 ±0.5 kg
Dimensions (W × H × D)		795 × 191 × 218 mm (H = 218 mm with fastening lug)
<b>Battery Controller</b>		<b>BATB3KEU3</b>
Output voltage		360...950 V DC
Input current		25 A
Weight		18.5 kg
Dimensions (W × H × D)		798 × 335 × 218 mm



For more detailed information, refer to the Wiser Guides online. Scan the QR code or follow the link:  
[https://www.productinfo.schneider-electric.com/wiser\\_home](https://www.productinfo.schneider-electric.com/wiser_home)



## Dimensions (mm)



## Technical Characteristics

## Overview

The Schneider Charge is an electrical appliance that supplies electricity to charge plug-in electric vehicles. This smart EV charging station can be fully commissioned and operated by the Wiser Home app or by any compatible 3rd party apps.

## Main data

Commercial Reference	<b>EVH5A22N2S</b>	<b>Schneider Charge 7.4/11/22 kW 1P+N/3P+N T2S</b>
	<b>EVH5A07N2C5</b>	<b>Schneider Charge 7.4 kW 1P+N 5 m cable</b>
	<b>EVH5A11N2C5</b>	<b>Schneider Charge 11 kW 3P+N 5 m cable</b>
	<b>EVH5A07N2C7</b>	<b>Schneider Charge 7.4 kW 1P+N 7 m cable</b>
	<b>EVH5A11N2C7</b>	<b>Schneider Charge 11 kW 3P+N 7 m cable</b>

Supported protocol	Zigbee
Product color	□ White
Product type	AC charging station

## Characteristics

Rated voltage	1P + N	230 V AC 50/60 Hz ±10 %
	3P + N	400 V AC 50/60 Hz ±10 %
Nominal output power	3P + N	11 kW 16 A, 22 kW 32 A
	1P + N	7.4 kW 32 A

Cabling	Top, back or bottom cabling Built-in fast connector. Ready for voltage test	
Charging current	16...32 A	
Internal protection	RCD-DD 6 mA DC filter	
Access control modes	Free access	
Socket-outlet type	1 (only T2S)	
Earthing system	TT, TN-S, TN-C-S, IT/TT without neutral (230 V AC only)	

## Environment

IP degree of protection	IP 55 conforming to IEC 60529	
IK degree of protection	IK 10 conforming to IEC 62262	
Operating temperature	T2S socket outlet	-35...45 °C (3P 32 A)
		-30...50 °C (1P 32 A)
		-30...55 °C (3P 16 A)
Relative humidity	5...95 %	
Storage temperature	-40...85 °C	

## Installation

Dimensions (H × W × D)	352 × 244 × 131 mm (without cable)
Installation method	Wall mounting

## Features

- Local signaling:
  - Status indication with multi-color LED
  - LED indication for Wi-Fi® connection and pairing
- Load management:
  - Possibility to connect with Anti-tripping system
  - OCCP 1.6 J
  - Wi-Fi® and RJ45 Ethernet
- Remote Features:
  - Scheduling
  - Start/Stop via Remote
  - Energy consumption/cost
  - Monitoring and history
- Attached cable for 5 m or 7 m with T2 connector
- Built-in micro programmed control unit for measurement: accuracy 1 %

## Weight

Type	Weight (kg)	
1P+ N T2S Socket outlet	3.2	
1P + N	5 m	5.5
	7 m	5.3
3P+N	5 m	4.4
	7 m	5.1

## Certification

CE, RCM



For more detailed information, refer to the Wiser Guides online. Scan the QR code or follow the link:  
[https://www.productinfo.schneider-electric.com/wiser\\_home](https://www.productinfo.schneider-electric.com/wiser_home)




## Technical Characteristics

### Overview

Schneider Charge anti-tripping module, working in conjunction with a Schneider Charge charging station, forms an intelligent load management system that continuously adapts the Charge's power output to the electric vehicle based on the available power in the home. The communication between the Home Anti-tripping system and the Schneider Charge charging station is done with power line communication preventing the need for separate communication cables.

### Main data

Commercial Reference	<b>EVA4HPC1</b>	<b>Schneider Charge Anti-tripping system 1P 16 A to 50 A</b>
	<b>EVA2HPC3</b>	<b>Schneider Charge Anti-tripping system 3P 16 A to 50 A</b>

Model	Single phase	Three phase
Power supply	230 V AC 50/60 Hz, TT, TN, IT/TT without Neutral	
Power input	220...240 V AC (+/- 10 %) 50/60 Hz	
Number of phases	L + N	L1 + L2 + L3 + N
Rated power	4 W	5 W
Pairing functionality	Pairing functionality between Schneider Charge charging station. Up to 6 sets allow to be used at same time within PLC function range.	
Network interface Communication	Power Line communication with Schneider Charge charging station	
Polling interval	1000 ms	
Photovoltaic application	Continuously adapts the charging power taking home consumption and self-generated energy into account	
<b>Environment</b>		
Operating temperature	-30...50 °C	
Storage temperature	-40...85 °C	
Humidity	5...95 % no condensation	
Altitude	≤ 2000 m	
Cooling	Natural cooling	
<b>Installation</b>		
Dimension (L × W × H)	70 × 93 × 69 mm	72 × 89 × 75 mm
<b>Weight</b>		
	196 g	180 g
<b>Rating</b>		
	Low rating: 16...50 A	Low rating: 16...50 A
	High rating: 32...100 A	
<b>Certification</b>		
	EN 61010-1, EN 61326-1, RCM 	



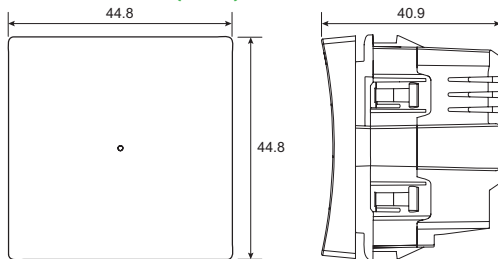
For more detailed information, refer to the Wiser Guides online. Scan the QR code or follow the link:  
[https://www.productinfo.schneider-electric.com/wiser\\_home](https://www.productinfo.schneider-electric.com/wiser_home)

# New Unica

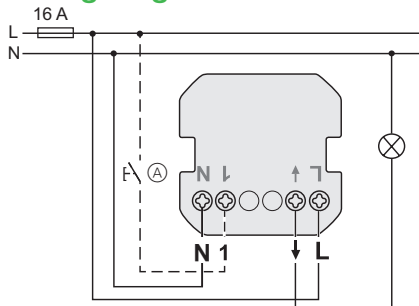




## Dimensions (mm)



## Wiring diagram



## Technical characteristics

## Overview

The Connected Relay Switch 10 A controls lights in a room, or automatically switch lights ON or OFF in response to a specified condition or event. It can switch on ohmic, inductive, or capacitive loads. It can be controlled remotely from the Wiser Home app or manually like a standard push button switch. It has an LED indicator showing the status of the switch. It can be used as a count-down timer, or time switch with scheduling via the Wiser Home app. In addition to this, it includes the Astro time switch function.

## Main data

Commercial Reference	NU353718W NU353818	NU353754W NU353854	NU353730W NU353830
Product color	□ White	■ Anthracite	■ Aluminium
Product or component type	Electronic Switch		

## Loads

LED lamp 230 V	LED	200 W
Incandescent lamp 230 V		2200 W
Halogen lamp 230 V		2000 W
LV halogen lamp 12 V	electronic transformer	1050 VA
	ferromagnetic transformer	500 VA
Capacitive load		10 A, 140 µF
Compact fluorescent lamp or ferromagnetic ballast		200 W
Motor (single-phase) 230 V		1000 VA

## Control options

- **Home control:** To control the switch through the Wiser Home app on your smart phone, you need to pair it to the Wiser Hub.
- **Room control / Quick Home connect:** by pairing with other Wiser devices without a Wiser Hub.
- **Direct operation:** The switch can always be controlled directly on-site. You can also connect any number of auxiliary push buttons.

## Characteristics

Nominal voltage	230 V AC, 50 Hz
Nominal current	10 A 140 µF, 10 A cosφ = 0.6
Standby consumption	Max. 0.4 W
Fuse rating	16 A
Neutral conductor	required

## Functions and settings

- Remote control by unlimited number of single mechanical push buttons
- Quick Home Connect functions

## Via Wiser Home app:

- Setting a timer: delay time (1 second - 24 hours), prewarning (with or without), manual switching (OFF or retrigger)
- Setting a time schedule (weekday switching, astro function, count-down timer, presence simulation)

## Quick Home Connect functions

The Connected Relay Switch 10 A can be paired with a wireless switch to turn the light ON/OFF without a Hub or a smartphone.

## Environment

IP rating	IP20
Operating temperature	5...40 °C

## Certification

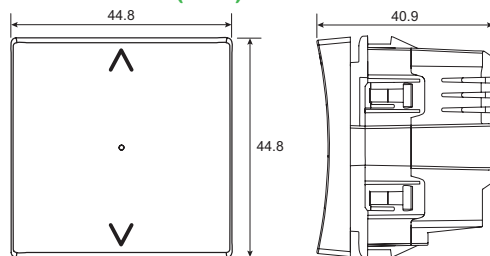
Zigbee 3.0



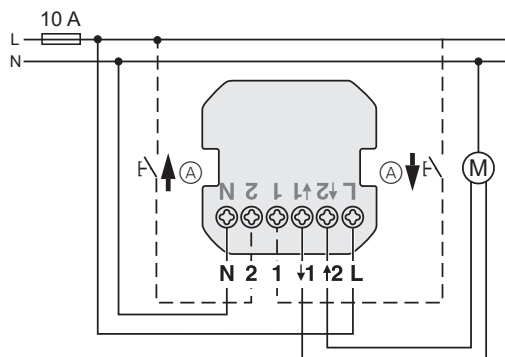
For more detailed information, refer to the Wiser Guides online. Scan the QR code or follow the link:  
[https://www.productinfo.schneider-electric.com/wiser\\_home](https://www.productinfo.schneider-electric.com/wiser_home)



### Dimensions (mm)



### Wiring diagram



### Technical characteristics

#### Overview

The Connected Blind Control Switch allows remote control of blinds or roller shutters via the Wiser Home app. It can also automatically adjust the shutter position based on specific conditions or events. Additionally, it enables control over the slat angle. Multiple switches can be paired together to control several blinds from one switch or the Wiser Home app. It is important that the blind and roller shutter motors must be equipped with an end position switch.

#### Main data

Commercial Reference	NU350818W NU350918	NU350854W NU350954	NU350830W NU350930
Product color	<input type="checkbox"/> White	<input checked="" type="checkbox"/> Anthracite	<input type="checkbox"/> Aluminium
Product or component type	Switch		

#### Loads

Motor (single-phase) 230 V		500 VA
-------------------------------	--	--------

#### Control options

- **Home control:** To control the blind control switch through the Wiser Home app on your smart phone, you need to pair it to the Wiser Hub.
- **Room control / Quick Home connect:** by pairing with other Wiser devices without a Wiser Hub.
- **Direct operation:** The blind control switch can always be controlled directly on-site. You can also connect any number of auxiliary push buttons.

#### Characteristics

Nominal voltage	230 V AC, 50 Hz
Nominal current	4 A, $\cos\phi = 0.6$
Standby consumption	Max. 0.4 W
Fuse rating	10 A
Neutral conductor	required

#### Functions and settings

- Protection of the motor against damage with two mutually electrically locked relay contacts
- Remote control by unlimited number of double mechanical push buttons, distance: 50 m
- Central control of multiple blind groups push buttons
- Quick Home Connect functions

#### Via Wiser Home app:

- Setting the blind movement time
- Varying blind and slat position
- Setting a timer or a time schedule
- Upgrade device firmware

#### Quick Home Connect functions

The Connected Blind Control Switch can be paired with a wireless switch for controlling a roller shutter/blinds without a Hub or a smartphone.

#### Environment

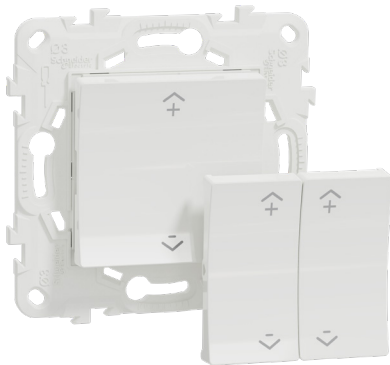
IP degree	IP20
Operating temperature	5...40 °C

#### Certification

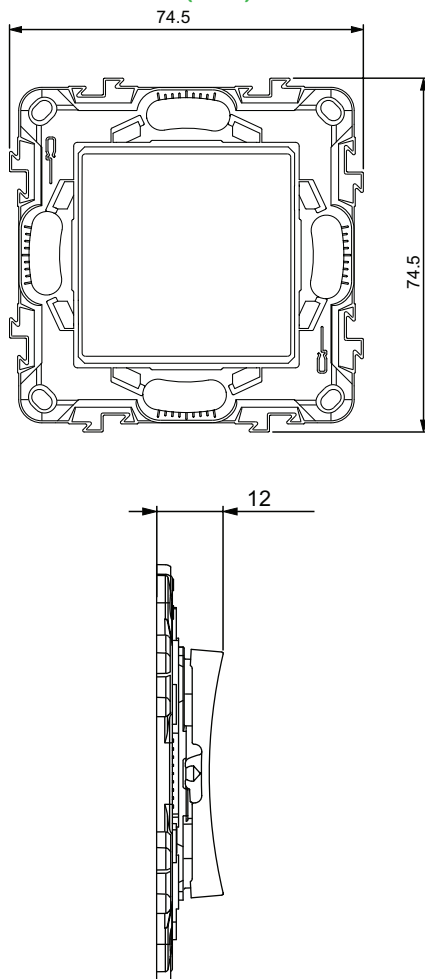
Zigbee 3.0



For more detailed information, refer to the Wiser Guides online. Scan the QR code or follow the link:  
[https://www.productinfo.schneider-electric.com/wiser\\_home](https://www.productinfo.schneider-electric.com/wiser_home)



### Dimensions (mm)



## Technical Characteristics

### Overview

The Connected Wireless Switch 1-gang/2-gang push-button function can be placed anywhere (installed on the wall, mounted on wood, glass or plastic surface) and is used to control other Wiser devices within the same Zigbee network. It can be configured to function as 1-gang or 2-gang switch through Wiser app or can be paired with other Wiser devices.

### Main data

Commercial Reference	NU557118W	NU557154W	NU557130W
	NU557118	NU557154	NU557130
Product colour	<input type="checkbox"/> White	<input checked="" type="checkbox"/> Anthracite	<input type="checkbox"/> Aluminium
Product or component type	Connected Wireless Switch		

### Control options

- **Home control:** To control the wireless switch with 1-gang/2-gang push button function through the Wiser app on your smart phone, you need to pair it to the Wiser Hub.
- **Room control / Quick Home connect:** by pairing with other Wiser devices without a Wiser Hub.
- **Direct operation:** The wireless switch can always be controlled directly on-site.

### Characteristics

Operating voltage	3 V DC (1 lithium button cell battery CR2032)
Battery life	Up to 5 years (depending on the frequency of use and quality of battery)
Number of rockers	Two
Max. transmitted power	≤ 10 dBm
Frequency band	2.4 GHz
Frequency range	2400...2480 MHz

### Environment

IP degree	IP20
Operating temperature	-5...45 °C
Relative humidity	5...95 %

### Quick Home Connect functions

The Connected Wireless Switch can be paired to other Wiser devices for switching, dimming and shutter control without a gateway or a smartphone.

### Complementary

Dimension (H × W × D)	74.5 × 74.5 × 12 mm
Installation	For wall box, wood or wall surfaces, use mounting screws. For glass or plastic surfaces, use adhesive pads or adhesive foil.

### Certification

Zigbee 3.0

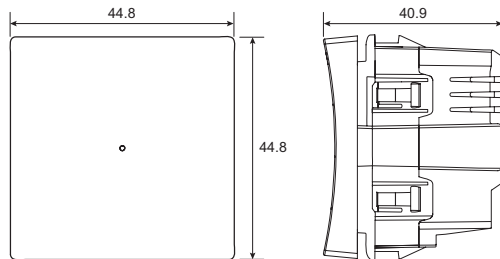
**Note:** Construction materials may cause interference that affects hub-to-device and device-to-device distances. In the open air, there is no interference, so the distance can be much longer.



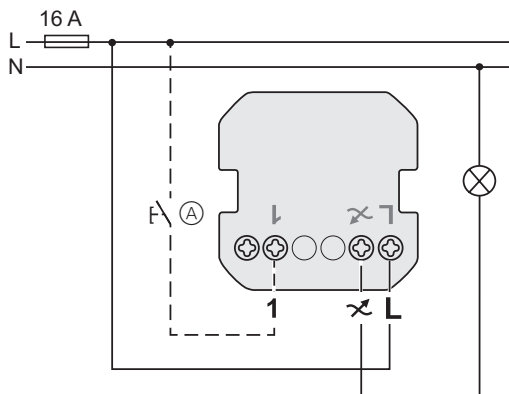
For more detailed information, refer to the Wiser Guides online. Scan the QR code or follow the link:  
[https://www.productinfo.schneider-electric.com/wiser\\_home](https://www.productinfo.schneider-electric.com/wiser_home)



## Dimensions (mm)



## Wiring diagram



## Technical characteristics

## Overview

The Connected Universal Push-button Dimmer LED controls the lighting level in a room, or sets lighting to a desired level in response to a specified condition or event. It can switch and dim ohmic, inductive, or capacitive loads RC/RL and loads of LED lamps. The dimmer can be controlled remotely, it can be scheduled for ON and OFF time via the Wiser Home app. The dimmer can also be controlled manually as a traditional push-button dimmer.

## Main data

Commercial Reference	NU351518W NU351718	NU351554W NU351754	NU351530W NU351730
Product color	□ White	■ Anthracite	■ Aluminium
Product or component type	Dimmer		

## Loads

LED lamp 230 V	LED	RC <sup>(1)</sup> : 7...100 W RL <sup>(2)</sup> : 7...20 W
Incandescent lamp 230 V		14...200
Halogen lamp 230 V		14...150 W
LV halogen lamp 12 V (electronic transformer)		14...150 VA
LV halogen lamp 12 V (ferromagnetic transformer)		14...150 VA

## Control options

- **Home control:** To control the dimmer through the Wiser Home app on your smart phone and to use the full functionality of the dimmer, you need to pair it to the Wiser Hub.
- **Room control / Quick Home connect:** by pairing with other Wiser devices without a Wiser Hub.
- **Direct operation:** The dimmer can always be controlled directly on-site. You can also connect any number of auxiliary push buttons.

## Characteristics

Nominal voltage	230 V AC, 50 Hz
Fuse rating	16 A
Standby consumption	Max. 0.4 W
Neutral conductor	not required

## Functions and settings

- Automatic load detection
- Brightness memory function
- Electronic overload, overheating and short-circuit protection
- Remote control by unlimited number of single mechanical push buttons
- Quick Home Connect functions

## Via Wiser Home app:

- Setting the switch-ON brightness or memory function (default setting)
- Setting the dimming range: minimum and maximum brightness
- Setting the LED operating mode manually (RL LED mode)
- Setting a timer or a time schedule

## Quick Home Connect functions

The Connected Universal Push-button Dimmer LED can be paired with a wireless switch to dim the brightness without a Hub or a smartphone. Also, the minimum and maximum brightness settings can be modified without the app.

## Environment

IP degree	IP20
Operating temperature	5...40 °C

## Certification

Zigbee 3.0

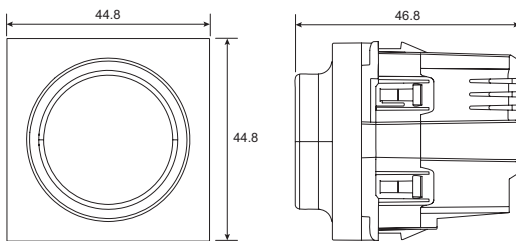
- (1) RC = Resistive and Capacitive loads  
(2) RL = Resistive and Inductive loads



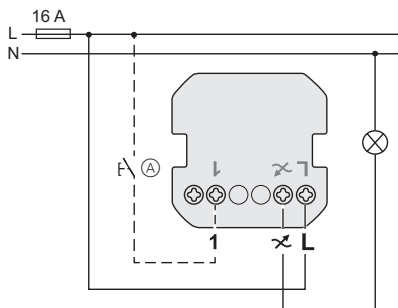
For more detailed information, refer to the Wiser Guides online. Scan the QR code or follow the link:  
[https://www.productinfo.schneider-electric.com/wiser\\_home](https://www.productinfo.schneider-electric.com/wiser_home)



### Dimensions (mm)



### Wiring diagram



### Technical characteristics

#### Overview

The Connected Universal Rotary Dimmer LED controls the lighting level in a room, or sets lighting to a desired level in response to a specified condition or event. It can switch and dim ohmic, inductive, or capacitive loads RC /RL and loads of LED lamps. The dimmer can be controlled remotely, it can be scheduled for ON and OFF time with the Wiser Home app. The dimmer can also be controlled manually as a traditional rotary dimmer.

#### Main data

Commercial Reference	NU351618W NU351818	NU351654W NU351854	NU351630W NU351830
Product color	□ White	■ Anthracite	■ Aluminium
Product or component type	Dimmer		

#### Loads

LED lamp 230 V	LED	RC <sup>(1)</sup> : 7...100 W RL <sup>(2)</sup> : 7...20 W
Incandescent lamp 230 V		14...200 W
Halogen lamp 230 V		14...150 W
LV halogen lamp 12 V	dimnable electronic transformer	14...150 VA
	dimnable ferromagnetic transformer	14...150 VA

#### Control options

- **Home control:** To control the dimmer through the Wiser Home app on your smart phone and to use the full functionality of the dimmer, you need to pair it to the Wiser Hub.
- **Room control / Quick Home connect:** by pairing with other Wiser devices without a Wiser Hub.
- **Direct operation:** The dimmer can always be controlled directly on-site. You can also connect any number of auxiliary push buttons.

#### Characteristics

Nominal voltage	230 V AC, 50 Hz
Fuse rating	16 A
Standby consumption	Max. 0.4 W
Neutral conductor	not required

#### Functions and settings

- Automatic load detection
- Brightness memory function
- Electronic overload, overheating and short-circuit protection
- Remote control by unlimited number of single mechanical push buttons
- Quick Home Connect functions

#### Via Wiser Home app:

- Setting the switch-on brightness or memory function (default setting)
- Setting the dimming range: minimum and maximum brightness
- Setting the LED operating mode manually (RL LED mode)
- Setting a timer or a time schedule

#### Quick Home Connect functions

The Connected Universal Rotary Dimmer LED can be paired with a wireless switch to dim the brightness without a Hub or a smartphone. Also, the minimum and maximum brightness settings can be modified without the app.

#### Environment

IP degree	IP21
Operating temperature	5...40 °C

#### Certification

Zigbee 3.0

(1) RC = Resistive and Capacitive loads

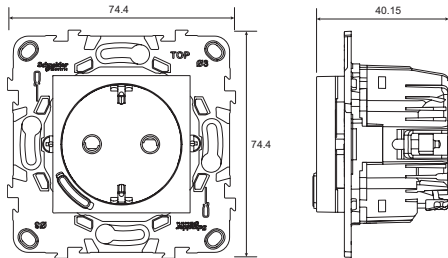
(2) RL = Resistive and Inductive loads



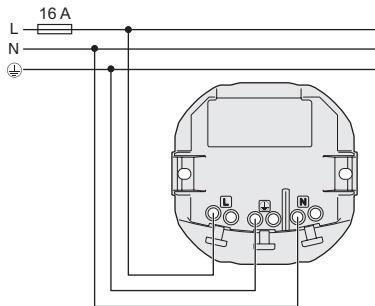
For more detailed information, refer to the Wiser Guides online. Scan the QR code or follow the link:  
[https://www.productinfo.schneider-electric.com/wiser\\_home](https://www.productinfo.schneider-electric.com/wiser_home)



### Dimensions (mm)



### Wiring diagram



## Technical characteristics

### Overview

The Connected Single Socket Outlet 16 A is an electrical outlet designed to manage and control electrical devices in a convenient and efficient manner. Use in newly built or retrofit installation for controlling electrical devices through the push button on the device, app, or by voice command (Amazon Alexa, Google Home). Fully compatible with the Schneider Electric Wiser platform, the single socket outlet can be used for a variety of applications including remote ON/OFF, power monitoring, scheduling, automation, and much more. The single socket outlet fits in regular depth wall boxes (40 mm) and does not require any special installation compared to regular socket-outlets making it convenient to fit in any kind of new or existing installation.

### Main data

Commercial Reference	NU555718W	NU555754W	NU555730W
	NU555718	NU555754	NU555730
Product color	□ White	■ Anthracite	■ Aluminium
Product or component type	Socket Outlet		

### Loads

LED lamp 230 V	LED	100 W, 125 µF
Incandescent lamp 230 V		2000 W
LV halogen lamp	electronic transformer	2000 VA
	ferromagnetic transformer	1500 VA
Motor load		1600 VA, 7 A max.
Resistive load		3680 W
Inductive load		16 A, cos φ = 0.6
Capacitive load		6 AX, max. 70 µF

### Control options

- **Home control:** To control the electrical devices with the single socket outlet remotely through the Wiser Home app or through voice (Amazon Alexa, Google Home) you will need the Wiser Hub.
- **Room control / Quick Home connect:** by pairing with other Wiser devices without a Wiser Hub.
- **Direct operation:** The socket operation can always be controlled directly through the push button on the device.

### Characteristics

Nominal voltage	230 V AC 50 Hz
Nominal current	16 A max.
Standby	Max. 0.4 W
Fuse protection	16 A circuit breaker
Frequency band	2405...2480 MHz
Transmission capacity	< 10 mW
Connecting terminal	Connected terminals for max. 2 × 2.5 mm <sup>2</sup> , 1.2 Nm

### Functions and settings

- The single socket outlet offers much more than a normal socket outlet when used with the Wiser Home app including:
- Switching devices ON/ OFF, and checking the status from the socket or remotely
  - Setting a timer or a schedule
  - Controlling and monitoring energy consumption of connected loads with a high level of accuracy (1 % for loads > 25 W)
  - Creating moments and automation with other Wiser Home products
  - Quick Home Connect functions

### Quick Home Connect functions

The Connected Single Socket Outlet 16 A can be paired with a wireless switch to turn the socket outlet ON/OFF without a Hub or a smartphone.

### Environment

IP degree	IP20
Operating temperature	5...40 °C

### Complementary

Dimension (H × W × D)	74.4 × 74.4 × 40.15 mm
Installation	Flush mounting

### Certification

Zigbee 3.0



For more detailed information, refer to the Wiser Guides online. Scan the QR code or follow the link:  
[https://www.productinfo.schneider-electric.com/wiser\\_home](https://www.productinfo.schneider-electric.com/wiser_home)



New Unica  
Accessories  
Unica Deco Frames






Download  
**Wiser Home app**  
Schneider Electric's connected  
technology for homes

Available on the  
**App Store**

GET IT ON  
**Google Play**

1-gang frames			2-gang frames		
					
Colour	Material	Commercial Ref.	Description		Commercial Ref.
White	Thermoplastic ABS-UV stabilised	<b>NU600218</b>	White	Thermoplastic ABS-UV stabilised	<b>NU600418</b>
Light grey		<b>NU600224</b>	Light grey		<b>NU600424</b>
Taupe		<b>NU600226</b>	Taupe		<b>NU600426</b>
Aluminium		<b>NU600230</b>	Aluminium		<b>NU600430</b>
Anthracite		<b>NU600254</b>	Anthracite		<b>NU600454</b>

3-gang frames			4-gang frames		
					
Description		Commercial Ref.	Description		Commercial Ref.
White	Thermoplastic ABS-UV stabilised	<b>NU600618</b>	White	Thermoplastic ABS-UV stabilised	<b>NU600818</b>
Light grey		<b>NU600624</b>	Light grey		<b>NU600824</b>
Taupe		<b>NU600626</b>	Taupe		<b>NU600826</b>
Aluminium		<b>NU600630</b>	Aluminium		<b>NU600830</b>
Anthracite		<b>NU600654</b>	Anthracite		<b>NU600854</b>

5-gang frames		
		
Description		Commercial Ref.
White	Thermoplastic ABS-UV stabilised	<b>NU601018</b>
Aluminium		<b>NU601030</b>
Anthracite		<b>NU601054</b>



For more detailed information, refer to the Wiser Guides online. Scan the QR code or follow the link:  
[https://www.productinfo.schneider-electric.com/wiser\\_home](https://www.productinfo.schneider-electric.com/wiser_home)

# Merten System M and System D





# System M and System Design Controls

## Relay Switch Insert



The Relay Switch Insert is suitable for controlling a wide variety of ohmic, inductive and capacitive loads such as incandescent lamps, energy saving lamps, LV halogen lighting with conventional transformer, electronic transformers, and fluorescent lamps.

Art. No.	Description	
MEG5161-0000	Relay Switch Insert 1-gang	
MEG5162-0000	Relay Switch Insert 2-gang	
Product or component type	Insert with relay	

### Characteristics

- Nominal voltage: 230 V AC, 50/60 Hz
- Nominal current: max. 10 A
- Switching capacity: 0...2000 W

### Complementary

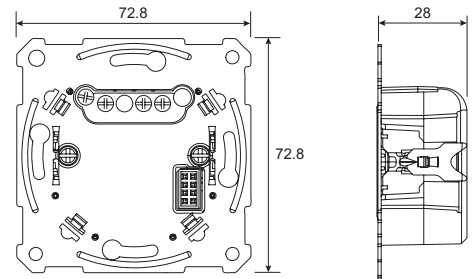
Connecting terminals	Screw terminals for max. 2 × 2.5 mm <sup>2</sup> solid or stranded types
Installation	Flush mounted with screws and claws

### Load



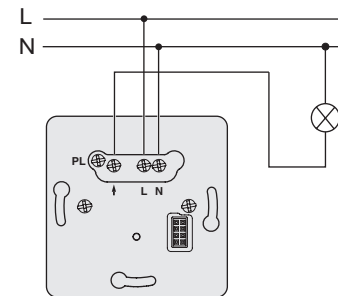
**Note:** All controlling functions are included in the module. An insert without a module and rocker has no function. The modules for the inserts can be found in "Push-button Modules".

### Dimensions (mm)

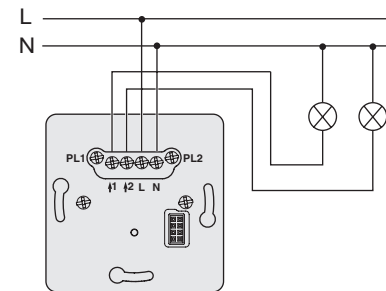


### Connections

Relay Switch Insert 1-gang



Relay Switch Insert 2-gang



For more detailed information, refer to the Wiser Guides online. Scan the QR code or follow the link: [https://www.productinfo.schneider-electric.com/wiser\\_home](https://www.productinfo.schneider-electric.com/wiser_home)



# System M and System Design

## Light Controls

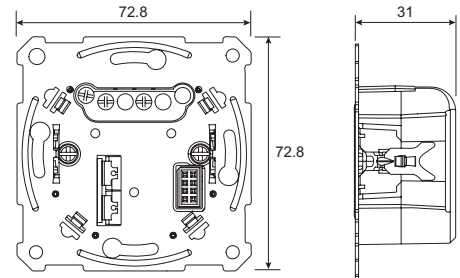
### Universal Dimmer Insert



The Universal Dimmer Insert is suitable for controlling ohmic, inductive or capacitive loads, e.g. incandescent lamps, dimmable wound transformers or dimmable electronic transformers. The universal dimmer insert automatically recognizes the connected load. Do not connect any mixed loads.

Art. No.	Description	
MEG5171-0000	Universal Dimmer Insert 1-gang	
MEG5172-0000	Universal Dimmer Insert 2-gang	
Product or component type	Dimmer insert	

### Dimensions (mm)



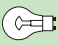


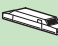
### Characteristics

- Nominal voltage: 230 V AC, 50 Hz
- Switching and dimming of one output
- Overload and short-circuit-proof

### Complementary

Connecting terminals	Screw terminals for max. 2 × 2.5 mm <sup>2</sup> solid or stranded types
Installation	Flush mounted with screws and claws

### Load

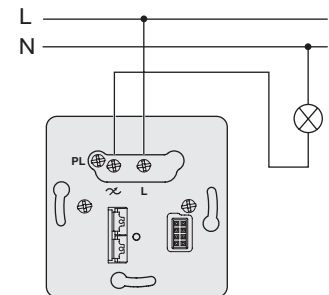
	LED				
<b>Universal Dimmer Insert 1-gang</b>	RC <sup>(1)</sup> : 14...210 W RL <sup>(2)</sup> : 14...50 W	20...420 W	40...420 VA	20...420 W	20-420 W
<b>Universal Dimmer Insert 2-gang (per channel)</b>	–	50...200 W	50...200 VA	50...200 W	50...200 W

(1) RC = Resistive and Capacitive loads.  
 (2) RL = Resistive and Inductive loads.

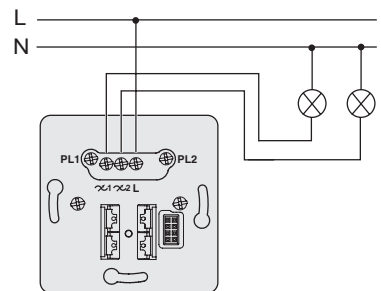
**Note:** All controlling functions are included in the module. An insert without a module and rocker has no function. The modules for the inserts can be found in "Push-button Modules".

### Connections

#### Universal Dimmer Insert 1-gang



#### Universal Dimmer Insert 2-gang



For more detailed information, refer to the Wiser Guides online. Scan the QR code or follow the link: [https://www.productinfo.schneider-electric.com/wiser\\_home](https://www.productinfo.schneider-electric.com/wiser_home)


# System M and System Design

## Light Controls

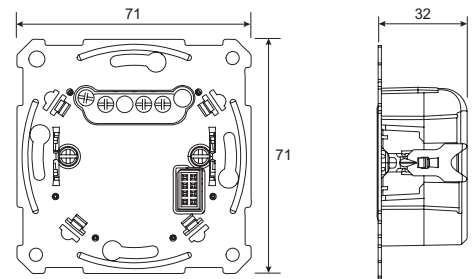
### 1-10 V Insert



The 1-10 V Insert suitable for fluorescent lamps with electronic ballast or electronic transformer with 1...10 V interface.

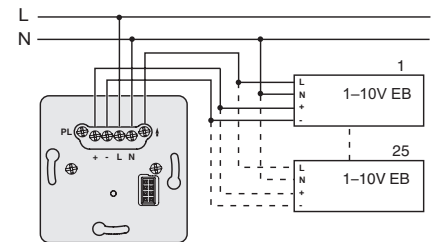
Art. No.	Description	
<b>MEG5180-0000</b>	1-10 V Insert	
Product or component type	Electronic potentiometer	
<b>Characteristics</b>		
<ul style="list-style-type: none"> <li>Nominal voltage: 230 V AC, 50 Hz</li> <li>Max. switching current: 10 A, <math>\cos\phi = 0.6</math></li> <li>Output current: 0...50 mA</li> <li>Switching and dimming of 25 controllable 1...10 V EBs</li> </ul>		
<b>Complementary</b>		
Connecting terminals	Screw terminals for max. $2 \times 2.5 \text{ mm}^2$ solid or stranded types.	
Installation	Flush mounted with screws and claws.	

### Dimensions (mm)

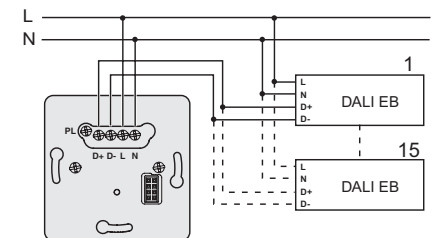


### Connections

1-10 V Insert




DALI Insert



## DALI Insert

The DALI Insert is suitable for 15 DALI EBs (electronic ballast).

Art. No.	Description	
<b>MEG5185-0000</b>	DALI Insert	
Product or component type	DALI control insert	
<b>Characteristics</b>		
<ul style="list-style-type: none"> <li>Nominal voltage: 230 V AC, 50 Hz</li> <li>Output current: 0...30 mA</li> <li>Overload and short-circuit-proof</li> <li>Switching and dimming of 15 controllable DALI EBs</li> </ul>		
<b>Complementary</b>		
Connecting terminals	Screw terminals for max. $2 \times 2.5 \text{ mm}^2$ solid or stranded types.	
Installation	Flush mounted with screws and claws.	

**Note:** All controlling functions are included in the module. An insert without a module and rocker has no function. The modules for the inserts can be found in "Push-button Modules".



For more detailed information, refer to the Wiser Guides online. Scan the QR code or follow the link: [https://www.productinfo.schneider-electric.com/wiser\\_home](https://www.productinfo.schneider-electric.com/wiser_home)

# Merten System M and System D

## Socket Outlets

### Connected Single Socket Outlet 16 A



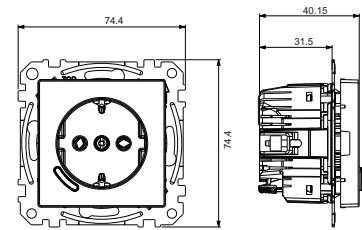
The Connected Single Socket Outlet 16 A is an electrical outlet designed to manage and control electrical devices in a convenient and efficient manner. Use in newly built or retrofit installation for controlling electrical devices through the push button on the device, Wiser Home app, or by voice command (Amazon Alexa, Google Home). Fully compatible with the Schneider Electric Wiser platform, the single socket outlet can be used for a variety of applications including remote ON/OFF, power monitoring, scheduling, automation, and much more. The single socket outlet fits in regular depth wall boxes (40 mm) and does not require any special installation compared to regular socket outlets making it convenient to fit in any kind of new or existing installation.

Commercial Reference	Product Color	Description
<b>MEG2380-0325</b> <b>MTN2380-0325</b>	Active white glossy	System M Connected Socket Outlet 16 A
<b>MEG2380-0414</b> <b>MTN2380-0414</b>	Anthracite	
<b>MEG2380-0460</b> <b>MTN2380-0460</b>	Aluminium	
<b>MEG2380-6035</b> <b>MTN2380-6035</b>	Lotus white	
<b>MEG2380-6034</b> <b>MTN2380-6034</b>	Anthracite	System D Connected Socket Outlet 16 A
<b>MEG2380-6036</b> <b>MTN2380-6036</b>	Stainless steel	
Product or component type		Single socket outlet
<b>Control options</b>		
<ul style="list-style-type: none"> <li>• <b>Home control:</b> To control the electrical devices with the connected single socket outlet remotely through the Wiser Home app or through voice (Amazon Alexa, Google Home) you will need the Wiser Hub.</li> <li>• <b>Room control / Quick Home connect:</b> by pairing with other Wiser devices without a Wiser Hub.</li> <li>• <b>Direct operation:</b> The socket operation can always be controlled directly through the push button on the device.</li> </ul>		
<b>Characteristics</b>		
Nominal voltage	230 V AC, 50 Hz	
Nominal current	16 A max.	
Standby	Max. 0.4 W	
Fuse Protection	16 A circuit breaker	
Frequency band	2405...2480 MHz	
Transmission capacity	< 10 mW	
<b>Functions and Settings</b>		
<p>The Single socket outlet offers much more than a normal socket outlet when used with the Wiser Home app including:</p> <ul style="list-style-type: none"> <li>• Switching devices ON/ OFF, and checking the status from the socket or remotely.</li> <li>• Setting a timer or a schedule.</li> <li>• Monitor and control energy consumption of connected loads with a high level of accuracy (1 % for loads &gt; 25 W).</li> <li>• Creating moments and automation with other Wiser products.</li> <li>• Quick Home Connect functions</li> </ul>		
<b>Environment</b>		
IP degree	IP20	
Operating temperature	5...40 °C	
<b>Complementary</b>		
Dimensions (H × W × D)	74.4 × 74.4 × 40.15 mm	
Installation	Flush mounted	
Connecting terminal	Connected terminals for max. 2 × 2.5 mm <sup>2</sup> , 1.2 Nm	
<b>Certification</b>		
Zigbee 3.0		



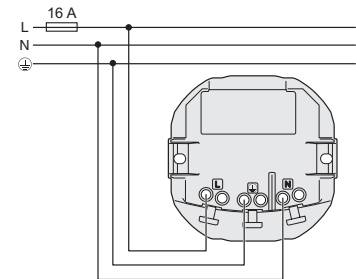
### Dimensions (mm)

Connected Single Socket Outlet 16 A



### Connections

Connected Single Socket Outlet 16 A



### Load compatibility

LED	2000 W	1500 VA	2000 VA	3680 W	16 A, cosφ = 0.6	6 AX, max. 70 μF	1600 VA, max. 7 A
-----	--------	---------	---------	--------	------------------	------------------	-------------------



For more detailed information, refer to the Wiser Guides online. Scan the QR code or follow the link: [https://www.productinfo.schneider-electric.com/wiser\\_home](https://www.productinfo.schneider-electric.com/wiser_home)


# System M and System Design

## Blind Controls

### Blind Control Insert



For local control of a blind/roller shutter motor with limit switch. The insert has two relay contacts electrically locked against each other that reliably prevent simultaneous triggering of the two relay outputs.

Art. No.	Description	
<b>MEG5165-0000</b>	Blind Control Insert	

Product or component type	Blind control insert
---------------------------	----------------------

#### Characteristics

- Nominal voltage: 230 V AC, 50 Hz
- Switching capacity: 1000 W
- Slat adjustment with blinds

#### Complementary

Connecting terminals	Screw terminals for max. 2 × 2.5 mm <sup>2</sup> solid or stranded types.
Installation	Flush mounted with screws and claws.

#### Certification

Zigbee 3.0

**Note:** All controlling functions are included in the module. An insert without a module and rocker has no function. The modules for the inserts can be found in "Push-button Modules".

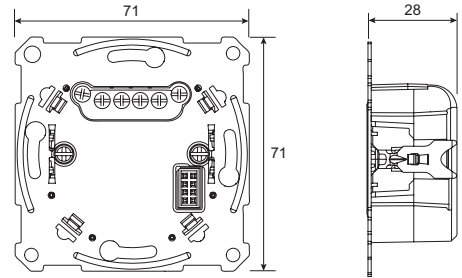
### Load compatibility



max. 1000 VA

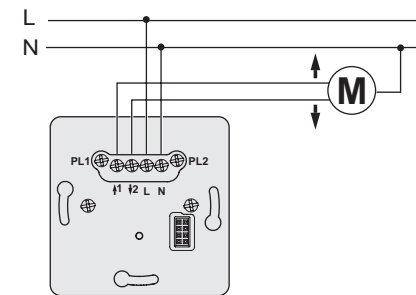
### Dimensions (mm)

Blind Control Insert



### Connections

Blind Control Insert

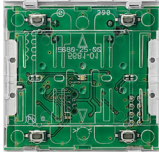
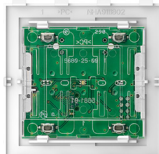


For more detailed information, refer to the Wiser Guides online. Scan the QR code or follow the link: [https://www.productinfo.schneider-electric.com/wiser\\_home](https://www.productinfo.schneider-electric.com/wiser_home)



The Connected Push-button Module supports functionality such as switching, dimming and blind control. With the Wiser Home app, you can combine the settings of one or more devices to form a moment or an automation.

The push-button module is connected to the inserts with a module interface and is completed with the rocker to form a Wiser offer.

Commercial Reference	Description	
<b>MEG5116-0300</b> <b>MTN5116-0300</b>	<b>System M:</b> Push-button module, 1-gang	
<b>MEG5116-6000</b> <b>MTN5116-6000</b>	<b>System D:</b> Push-button module, 1-gang	
Product or component type	Push-button module	
<b>Characteristics</b>		
Number of function keys	2	
<b>Functions and settings</b>		
<ul style="list-style-type: none"> <li>Local control switch</li> <li>Local control dimming up/down control</li> <li>Local control roller blind</li> <li>Local control starting staircase timer (with/without warning)</li> <li>Local control pulse generator</li> <li>Local control sunshade function</li> <li>Local control calling up/saving scenes</li> </ul> <p><b>Via Wiser Home app:</b></p> <ul style="list-style-type: none"> <li>Setting the switch-ON brightness or memory function (default setting).</li> <li>Setting the dimming range: minimum and maximum brightness.</li> <li>Setting the blind and slat position.</li> <li>Setting the blind movement time.</li> </ul>		
<b>Environment</b>		
IP degree	IP20	
<b>Complementary</b>		
Dimensions (H × W × D)	53 × 52 × 25 mm	
<b>To be completed with</b>		
Relay switch insert	<b>MEG5161-0000</b>	
Universal Dimmer Insert 1-gang	<b>MEG5171-0000</b>	
1-10 V Insert	<b>MEG5180-0000</b>	
DALI Insert	<b>MEG5185-0000</b>	
Blind Control Insert	<b>MEG5165-0000</b>	
<b>Certification</b>		
Zigbee 3.0		

**Note:** The rockers and cover frames for the Push-button Modules can be found in "Accessories".

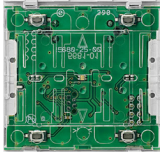
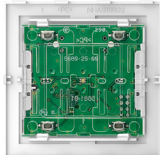


For more detailed information, refer to the Wiser Guides online. Scan the QR code or follow the link:  
[https://www.productinfo.schneider-electric.com/wiser\\_home](https://www.productinfo.schneider-electric.com/wiser_home)



The Connected Push-Button Module supports functionality such as switching, dimming and blind control. With the Wiser app, you can combine the settings of one or more devices to form a moment or an automation.

The push-button module is connected to the inserts with a module interface and is completed with the rocker to form a Wiser offer.

Commercial Reference	Description	
<b>MEG5126-0300</b> <b>MTN5126-0300</b>	<b>System M:</b> Push-button module, 2-gang	
<b>MEG5126-6000</b> <b>MTN5126-6000</b>	<b>System D:</b> Push-button module, 2-gang	
Product or component type	Push-button module	
<b>Characteristics</b>		
Number of function keys	4	
<b>Functions and settings</b>		
<ul style="list-style-type: none"> <li>Local control switch</li> <li>Local control dimming up/down control</li> <li>Local control starting staircase timer (with/without warning)</li> <li>Local control pulse generator</li> <li>Local control calling up/saving scenes</li> </ul>		
<b>Via Wiser Home app:</b>		
<ul style="list-style-type: none"> <li>Setting the switch-ON brightness or memory function (default setting)</li> <li>Setting the dimming range: minimum and maximum brightness</li> </ul>		
<b>To be completed with</b>		
Relay switch insert	<b>MEG5162-0000</b>	
Universal Dimmer Insert 2-gang	<b>MEG5172-0000</b>	
<b>Environment</b>		
IP degree	IP20	
<b>Complementary</b>		
Dimensions (H × W × D)	53 × 52 × 25 mm	
<b>Certification</b>		
Zigbee 3.0		

**Note:** The rockers and cover frames for the Push-button Modules can be found in "Accessories".



For more detailed information, refer to the Wiser Guides online. Scan the QR code or follow the link:  
[https://www.productinfo.schneider-electric.com/wiser\\_home](https://www.productinfo.schneider-electric.com/wiser_home)

# Merten System M and System D Switches



## Connected Wireless Switch 1-gang/2-gang



Download  
**Wiser Home app**  
Schneider Electric's connected  
technology for homes



The Connected Wireless Switch 1-gang/2-gang can be placed anywhere and is used to control a group of Wiser Zigbee devices within the same Zigbee network. The device can be configured through the Wiser Home app or can be paired with other Wiser Zigbee devices directly. By default, the device is operated as 1-gang. It can also be configured to operate as 2-gang device.

Commercial Reference	Description	
<b>MEG5001-0300</b> <b>MTN5001-0300</b>	<b>System M:</b> Wireless Switch, 1-2 gang	
<b>MEG5001-6000</b> <b>MTN5001-6000</b>	<b>System D:</b> Wireless Switch, 1-2 gang	

Product or component type	Wireless Switch
---------------------------	-----------------

### Control options

- **Home control and Room control:** To control the wireless switch, 1-gang/ 2-gang through the Wiser app on your smartphone, you need to pair it to the Wiser Hub.
- **Room control / Quick Home connect:** by pairing with other Wiser devices without a Wiser Hub.

### Characteristics

Operating voltage	3 V DC
Battery	CR2032
Battery life	Up to 5 years (depending on the frequency of use and quality of the battery)
Max. transmitted power	≤ 10 mW
Frequency range	2405...2480 MHz

### Functions and settings

Press and hold the up and down push buttons simultaneously for 10 seconds until the LED turns red to switch from 1-gang to 2-gang.

### Quick Home Connect functions

The Connected Wireless Switch 1-gang/2-gang can be paired with a wireless devices for controlling the device without a Hub or a smartphone.

### Environment

IP degree	IP20
Operating temperature	-5...45 °C
Relative humidity	5...95 %

### Complementary

Dimensions (H × W × D)	53 × 52 × 25 mm
Installation	For wall box, wood, or wall surfaces, use mounting screws. For glass or plastic surfaces, use adhesive pads or adhesive foil. Do not install the device on a metal surface, as it affects the wireless communication and performance of the device.

### Certification

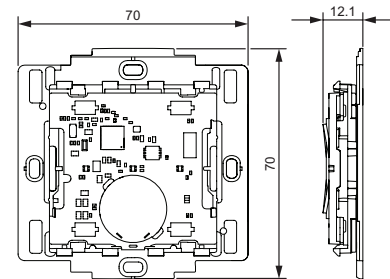
CE

### Note:

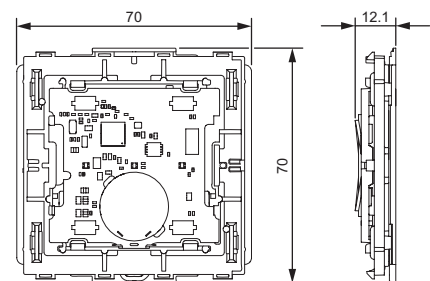
- The rocker and cover frame is not included in the package. They must be procured separately. The rockers and cover frames for the Wireless Switch Inserts can be found in "Accessories".
- Construction materials may cause interference that affects hub-to-device and device-to-device distances. In the open air, there is no interference, so the distance can be much longer.

## Dimensions (mm)

System M: Wireless Switch 1-2-gang



System D: Wireless Switch 1-2-gang



For more detailed information, refer to the Wiser Guides online. Scan the QR code or follow the link:  
[https://www.productinfo.schneider-electric.com/wiser\\_home](https://www.productinfo.schneider-electric.com/wiser_home)

## Merten System M and System D

## Accessories

## System M Rockers



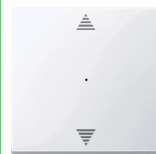
## System M Rockers



Colour	Material	Commercial Ref.
Polar white (glossy)	Thermoplastic	<b>432119</b>
Active white (glossy)	Thermoplastic	<b>432125</b>
Anthracite	Thermoplastic	<b>433114</b>
Polar white	Polycarbonate matt	<b>433119</b>
Aluminium	Thermoplastic	<b>433160</b>
Black (matt)	Thermoplastic	<b>MEG3300-0403</b>

**Note:** The rocker is attached to the Push button insert 1 pole. To be completed with System M Push button insert 1 pole **MEG3150-0000**.

## Rocker for 1-gang Push-button Module



Colour	Material	Commercial Ref.	Colour	Material	Commercial Ref.
Polar white (glossy)	Thermoplastic	<b>MEG5210-0319</b>	Polar white (glossy)	Thermoplastic	<b>MEG5215-0319</b>
Active white (glossy)	Thermoplastic	<b>MEG5210-0325</b>	Active white (glossy)	Thermoplastic	<b>MEG5215-0325</b>
Polar white	Polycarbonate matt	<b>MEG5210-0419</b>	Polar white	Polycarbonate matt	<b>MEG5215-0419</b>
Black (matt)	Thermoplastic	<b>MEG5210-0403</b>	Black (matt)	Thermoplastic	<b>MEG5215-0403</b>
Anthracite	Thermoplastic	<b>MEG5210-0414</b>	Anthracite	Thermoplastic	<b>MEG5215-0414</b>
Aluminium	Thermoplastic	<b>MEG5210-0460</b>	Aluminium	Thermoplastic	<b>MEG5215-0460</b>

**Note:** The rocker is attached to the 1-gang Push-button Module. To be completed with System M Push-button Module **MEG5116-0300** or Wireless Switch **MEG5001-0300**.

## Rocker for 2-gang Push-button Module



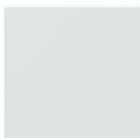
Colour	Material	Commercial Ref.
Polar white (glossy)	Thermoplastic	<b>MEG5220-0319</b>
Active white (glossy)	Thermoplastic	<b>MEG5220-0325</b>
Polar white	Polycarbonate matt	<b>MEG5220-0419</b>
Black (matt)	Thermoplastic	<b>MEG5220-0403</b>
Anthracite	Thermoplastic	<b>MEG5220-0414</b>
Aluminium	Thermoplastic	<b>MEG5220-0460</b>

**Note:** The rocker is attached to the 2-gang Push-button Module. To be completed with System M Push-button Module **MEG5126-0300** or Wireless Switch **MEG5001-0300**.



For more detailed information, refer to the Wiser Guides online. Scan the QR code or follow the link:  
[https://www.productinfo.schneider-electric.com/wiser\\_home](https://www.productinfo.schneider-electric.com/wiser_home)

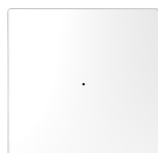
## System D Rockers



Colour	Material	Commercial Ref.
Sahara	-	MTN3300-6033
Anthracite	Thermoplastic	MEG3300-6034
Lotus white	Thermoplastic	MEG3300-6035
Stainless steel	Thermoplastic	MEG3300-6036
Nickel	Metallic	MEG3300-6050
Mocca	Metallic	MEG3300-6052

**Note:** The rocker is attached to the Push button insert 1 pole. To be completed with System M Push button insert 1 pole **MEG3150-0000**

## Rocker for 1-gang Push-button Module



Colour	Material	Commercial Ref.	Colour	Material	Commercial Ref.
Sahara	-	MTN5210-6033	Sahara	-	MTN5215-6033
Anthracite	ABS matt	MEG5210-6034	Anthracite	ABS matt	MEG5215-6034
Lotus white	ABS glossy	MEG5210-6035	Lotus white	ABS glossy	MEG5215-6035
Stainless steel	ABS glossy	MEG5210-6036	Stainless steel	ABS glossy	MEG5215-6036
Nickel	ABS metallic	MEG5210-6050	Nickel	ABS metallic	MEG5215-6050
Mocca	ABS metallic	MEG5210-6052	Mocca	ABS metallic	MEG5215-6052

**Note:** The rocker is attached to the 1-gang Push-button Module. To be completed with System M Push-button Module **MEG5116-6000** or Wireless Switch **MEG5001-6000**.

## Rocker for 2-gang Push-button Module



Colour	Material	Commercial Ref.
Sahara	Thermoplastic	MTN5220-6033
Anthracite	ABS matt	MEG5220-6034
Lotus white	ABS glossy	MEG5220-6035
Stainless steel	ABS glossy	MEG5220-6036
Nickel	ABS metallic	MEG5220-6050
Mocca	ABS metallic	MEG5220-6052

**Note:** The rocker is attached to the 2-gang Push-button Module. To be completed with System M Push-button Module **MEG5126-6000** or Wireless Switch **MEG5001-6000**.

\*ABS: Acrylonitrile Butadiene-Styrene



For more detailed information, refer to the Wiser Guides online. Scan the QR code or follow the link:  
[https://www.productinfo.schneider-electric.com/wiser\\_home](https://www.productinfo.schneider-electric.com/wiser_home)



07:35  
06/02 for morgen  
WMO  
15% 12 15% +  
11° 10° 11°

# Wiser™ Index



## Reference Numbers

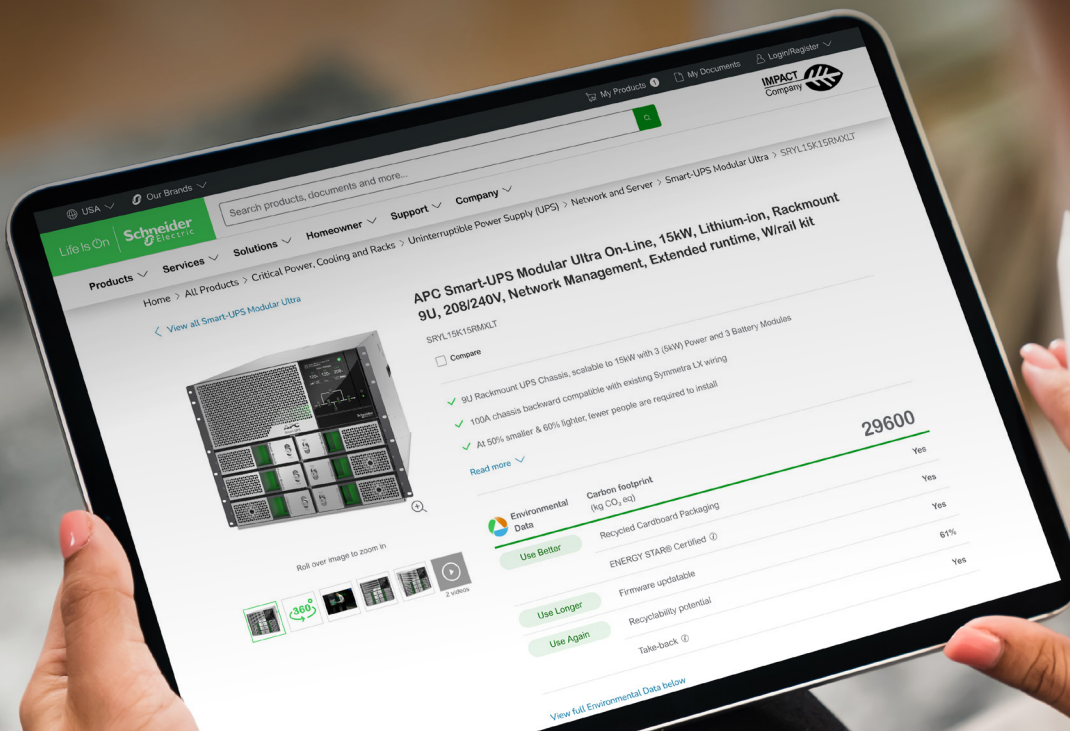
Find technical information by product reference number

Ref.	Page	Ref.	Page	Ref.	Page	Ref.	Page
432119	81	HY6K1EU1	58	MEG5215-6052	82	NU353754W	65
432125	81	HY8K1EU1	58	MEG5220-0319	81	NU353818	65
433114	81	MEG2380-0325	76	MEG5220-0325	81	NU353830	65
433119	81	MEG2380-0414	76	MEG5220-0403	81	NU353854	65
433160	81	MEG2380-0460	76	MEG5220-0414	81	NU555718	70
A9XMC1D3	57	MEG2380-6034	76	MEG5220-0419	81	NU555718W	70
BAT7KEU1	60	MEG2380-6035	76	MEG5220-0460	81	NU555730	70
BAT10KEU1	60	MEG2380-6036	76	MEG5220-6034	82	NU555730W	70
BAT14KEU1	60	MEG3300-0403	81	MEG5220-6035	82	NU555754	70
BAT17KEU1	60	MEG3300-6034	82	MEG5220-6036	82	NU555754W	70
BAT20KEU1	60	MEG3300-6035	82	MEG5220-6050	82	NU557118	67
BATB3KEU3	61	MEG3300-6036	82	MEG5220-6052	82	NU557118W	67
BATPMEU2	61	MEG3300-6050	82	MTN2380-0325	76	NU557130	67
CCT5010-0002	37	MEG3300-6052	82	MTN2380-0414	76	NU557130W	67
CCT5010-0002W	37	MEG5001-0300	80	MTN2380-0460	76	NU557154	67
CCT5010-0003	38	MEG5001-6000	80	MTN2380-6034	76	NU557154W	67
CCT5011-0002	39	MEG5116-0300	78	MTN2380-6035	76	NU600218	71
CCT5011-0002W	39	MEG5116-6000	78	MTN2380-6036	76	NU600224	71
CCT5015-0002	40	MEG5126-0300	79	MTN3300-6033	82	NU600226	71
CCT5015-0002W	40	MEG5126-6000	79	MTN5001-0300	80	NU600230	71
CCT501411	53	MEG5161-0000	73, 78	MTN5001-6000	80	NU600254	71
CCT501800-0001	36	MEG5162-0000	73, 79	MTN5116-0300	78	NU600418	71
CCT501801	35	MEG5165-0000	77, 78	MTN5116-6000	78	NU600424	71
CCT591011	42	MEG5171-0000	74, 78	MTN5126-0300	79	NU600426	71
CCT591012	42	MEG5172-0000	74, 79	MTN5126-6000	79	NU600430	71
CCT592011	43	MEG5180-0000	75, 78	MTN5210-6033	82	NU600454	71
CCT592012	43	MEG5185-0000	75, 78	MTN5215-6033	82	NU600618	71
CCT593011	45	MEG5210-0319	81	MTN5220-6033	82	NU600624	71
CCT593012	45	MEG5210-0325	81	NU350818W	66	NU600626	71
CCT595011	44	MEG5210-0403	81	NU350830W	66	NU600630	71
CCT595012	44	MEG5210-0414	81	NU350854W	66	NU600654	71
CCT599001	47	MEG5210-0419	81	NU350918	66	NU600818	71
CCT599002	47	MEG5210-0460	81	NU350930	66	NU600824	71
CCTFR6100	49	MEG5210-6034	82	NU350954	66	NU600826	71
CCTFR6400	48	MEG5210-6035	82	NU351518W	68	NU600830	71
CCTFR6501	46	MEG5210-6036	82	NU351530W	68	NU600854	71
CCTFR6600	52	MEG5210-6050	82	NU351554W	68	NU601018	71
CCTFR6730	41	MEG5210-6052	82	NU351618W	69	NU601030	71
CCTFR6901G2	51	MEG5215-0319	81	NU351630W	69	NU601054	71
CFMT021ZB	50	MEG5215-0325	81	NU351654W	69	R9M20	54
EVA2HPC1	63	MEG5215-0403	81	NU351718	68	R9M41	54
EVA2HPC3	63	MEG5215-0414	81	NU351730	68	R9M60	54
EVH5A07N2C5	62	MEG5215-0419	81	NU351754	68	R9M70	54
EVH5A07N2C7	62	MEG5215-0460	81	NU351818	69		
EVH5A11N2C5	62	MEG5215-6034	82	NU351830	69		
EVH5A11N2C7	62	MEG5215-6035	82	NU351854	69		
EVH5A22N2S	62	MEG5215-6036	82	NU353718W	65		
HY5K1EU1	58	MEG5215-6050	82	NU353730W	65		





# Environmental Data Program

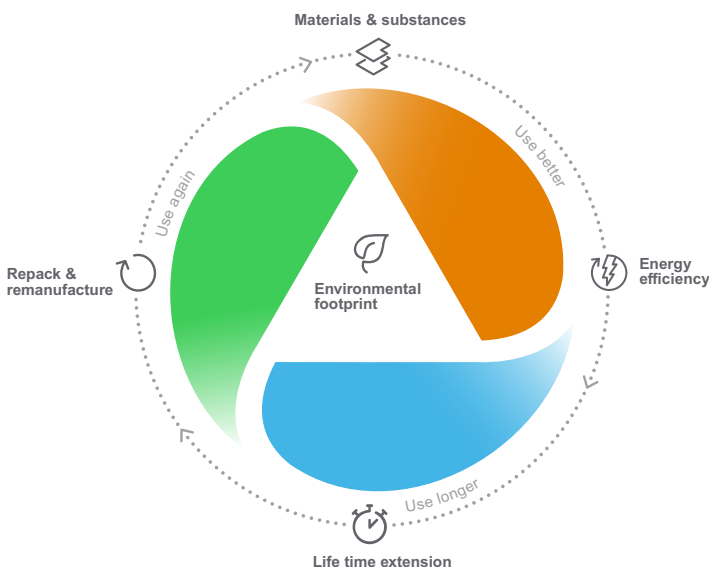


## Next-level transparency for better-informed product choices

The Environmental Data Program is a framework for how we measure, categorize, and compare the environmental attributes and footprint of our products.

Using a rigorous, fact-based methodology, the program provides environmental data from across the product lifecycle.

### Five data categories across the product lifecycle



**Use Better:** How sustainable a product is, including environmental footprint, materials and substances, packaging, and energy efficiency.

**Use Longer:** How a product's life time can be effectively extended in terms of reparability and updatability.

**Use Again:** How a product can be reused, from dismantling and remanufacturing to recyclability and manufacturer take back.

With this transparent, verified data, customers and partners are empowered to make conscious environmental choices and accurately evaluate and report on sustainability performance.

All our hardware offers have an associated environmental data available on se.com product pages.



Learn more about the **Environmental Data Program**

Life Is On | **Schneider**  
Electric

Schneider Electric Industries SAS

35, rue Joseph Monier  
CS 30323  
92506 Rueil Malmaison Cedex  
France

RCS Nanterre 954 503 439  
Capital social 928 298 512 €  
[www.se.com](http://www.se.com)

03-2025

© 2025 - Schneider Electric. All Rights Reserved.

All trademarks are owned by Schneider Electric Industries SAS or its affiliated companies.

Document reference: LSB03185EN

This document has been  
printed on recycled paper

